

*You have arrived at:*

# Reimagine Middle Branch: Environmental Justice in Action

# *Welcome!*

We will get started  
soon.



EPA MID-ATLANTIC REGION  
2023 SUMMIT

Engaging and Investing for a  
Healthy and Sustainable Future

# Friendly Reminders Before We Get Started

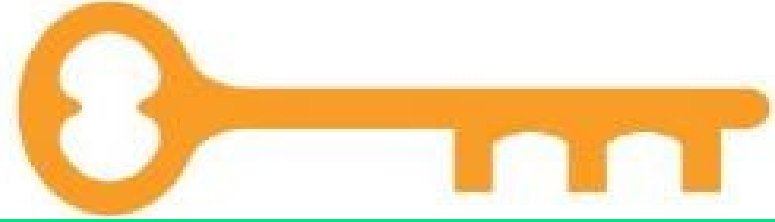
Please mute yourself and turn off your webcam during presentations.

If you encounter technical difficulties during the meeting, you can:

- ✓ Send a chat message directly to Host or IT Support
- ✓ Email [epamidatsummit@michaeldbaker.com](mailto:epamidatsummit@michaeldbaker.com) with the subject line “Zoom Support”

*This session is being recorded and will be made available after the summit.*

**SOUTH BALTIMORE  
GATEWAY PARTNERSHIP**



# REIMAGINE MIDDLE BRANCH

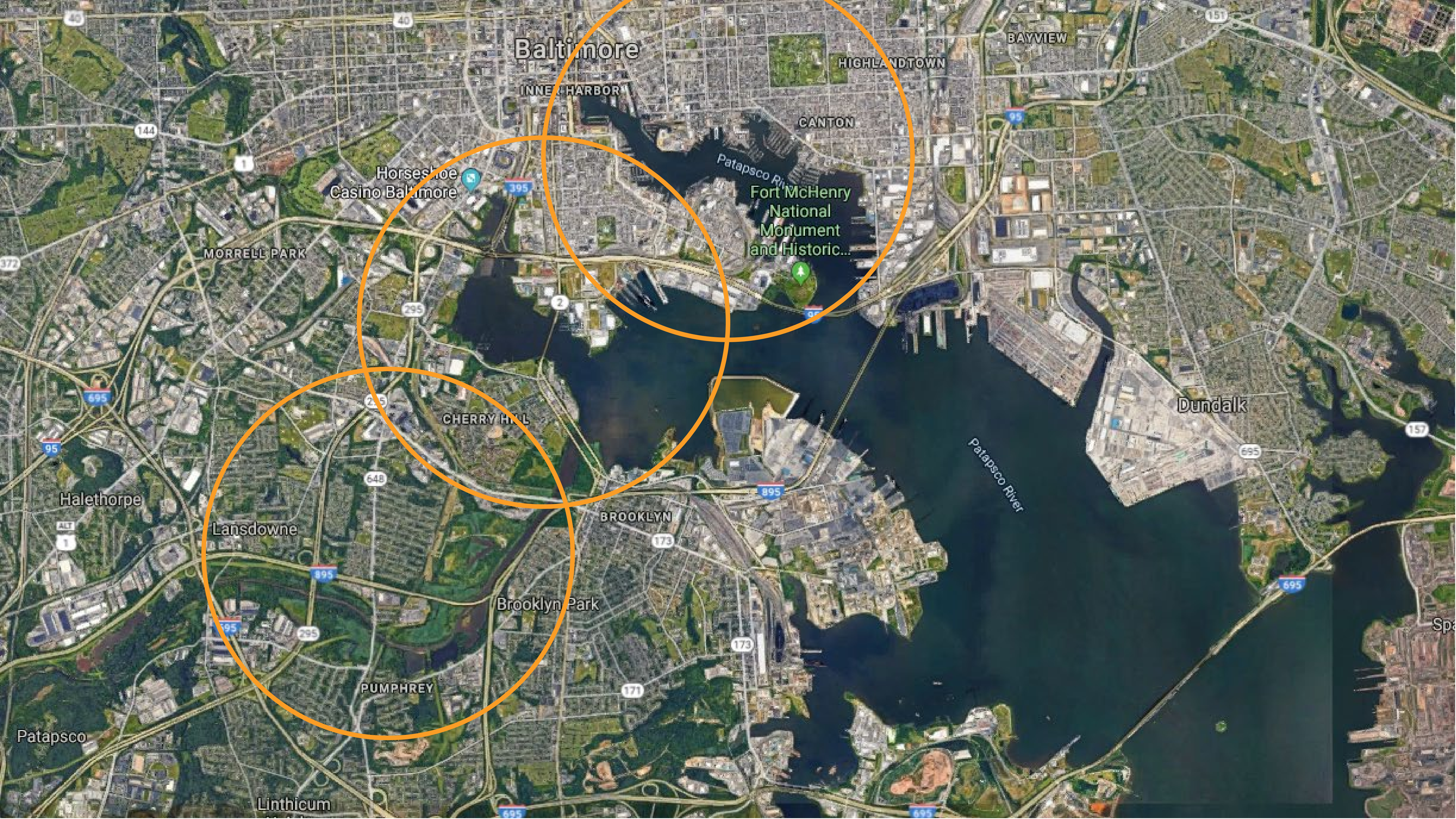
Parks, projects, & programs to connect  
communities in South Baltimore



**Brandon M. Scott  
Mayor**







Baltimore

INNER HARBOR

HIGHLANDTOWN

BAYVIEW

CANTON

Horseshoe  
Casino Baltimore

Fort McHenry  
National  
Monument  
and Historic...

MORRELL PARK

CHERRY HILL

Dundalk

Halethorpe

Lansdowne

BROOKLYN

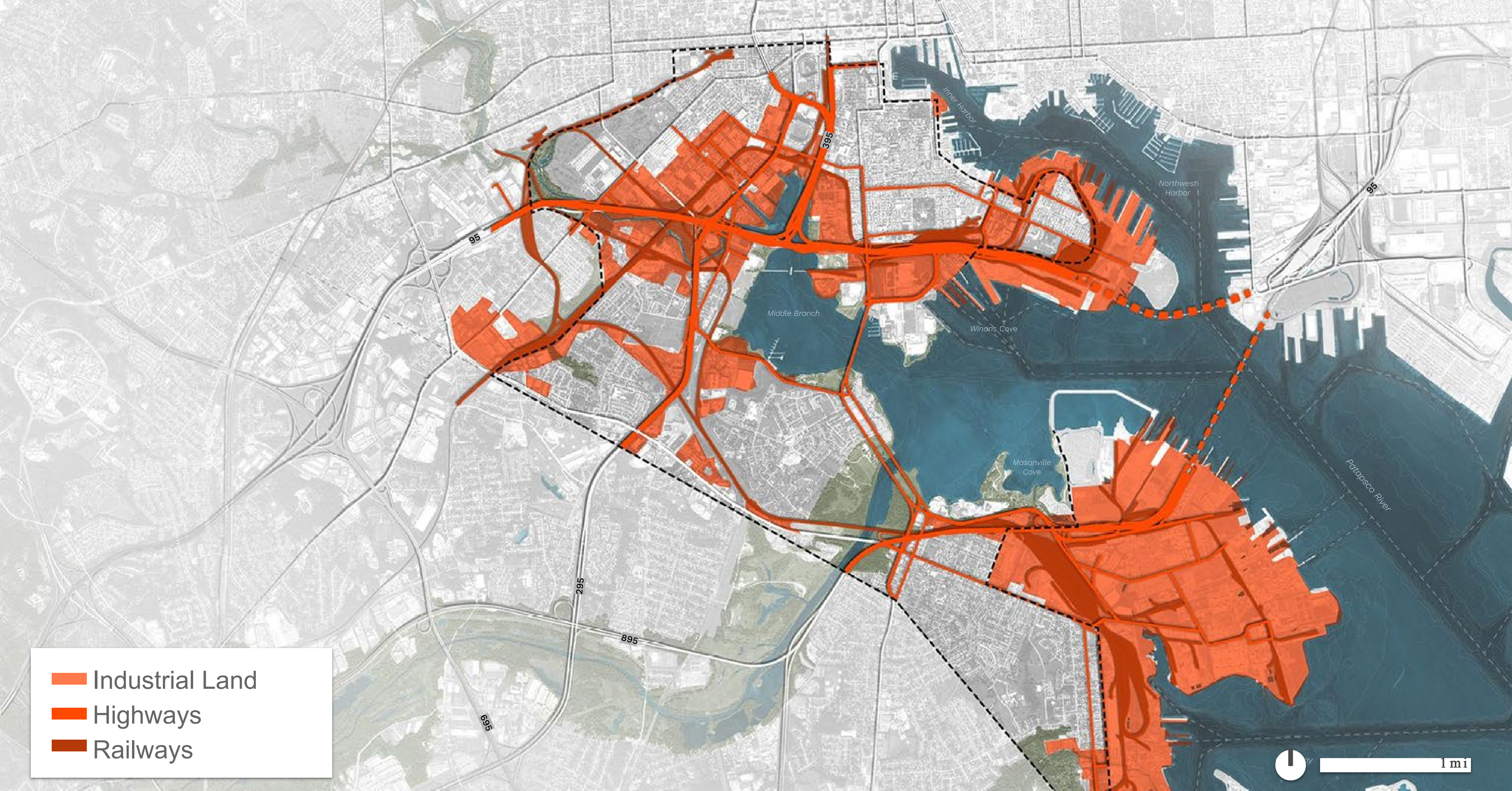
Brooklyn Park

PUMPHREY

Patapsco

Linthicum

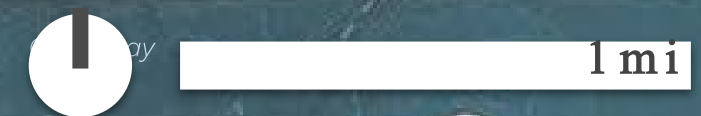
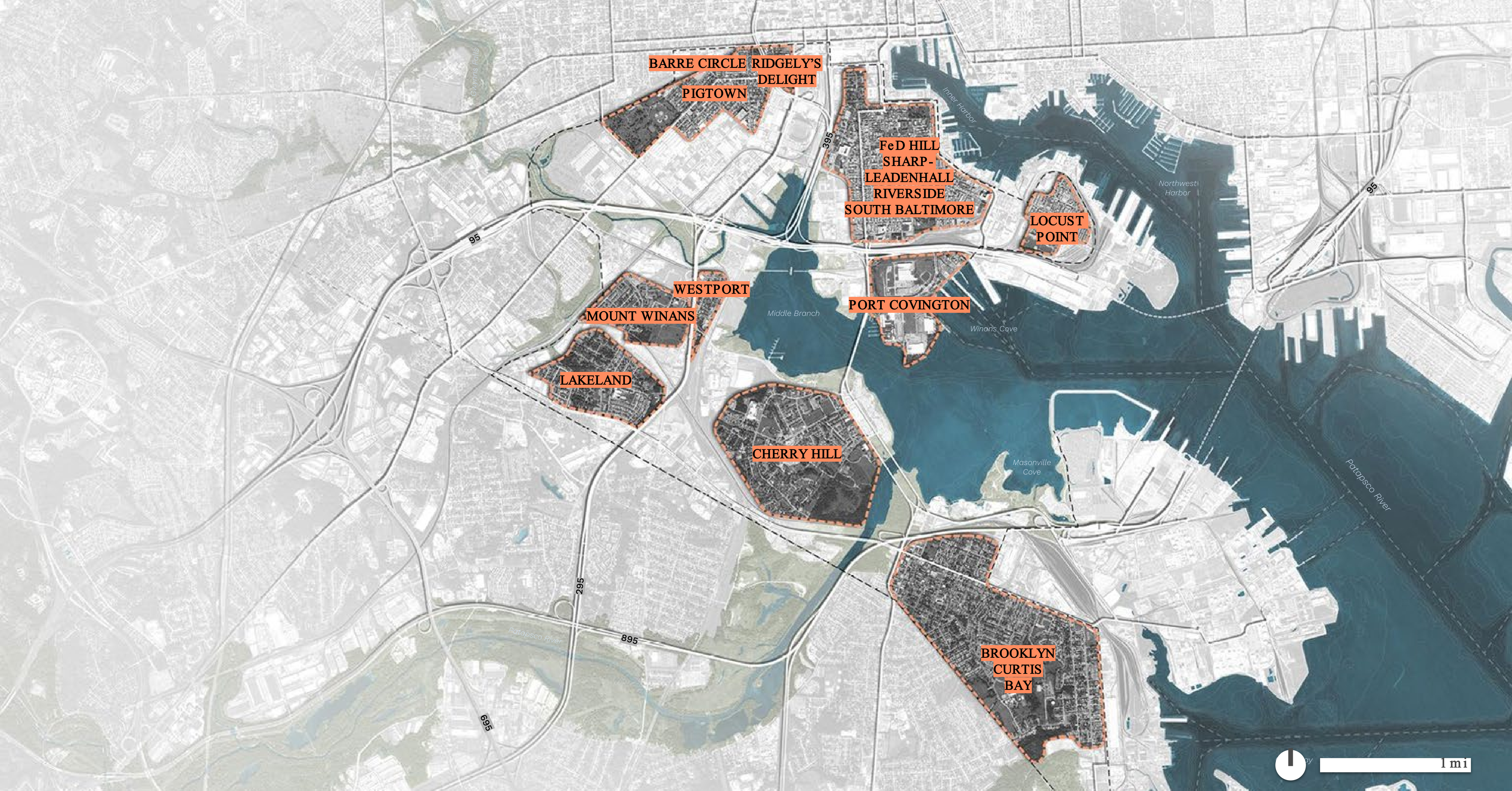




**BARRIERS**

**REIMAGINE MIDDLE BRANCH**





9 NEIGHBORHOOD 'ISLANDS'

REIMAGINE MIDDLE BRANCH













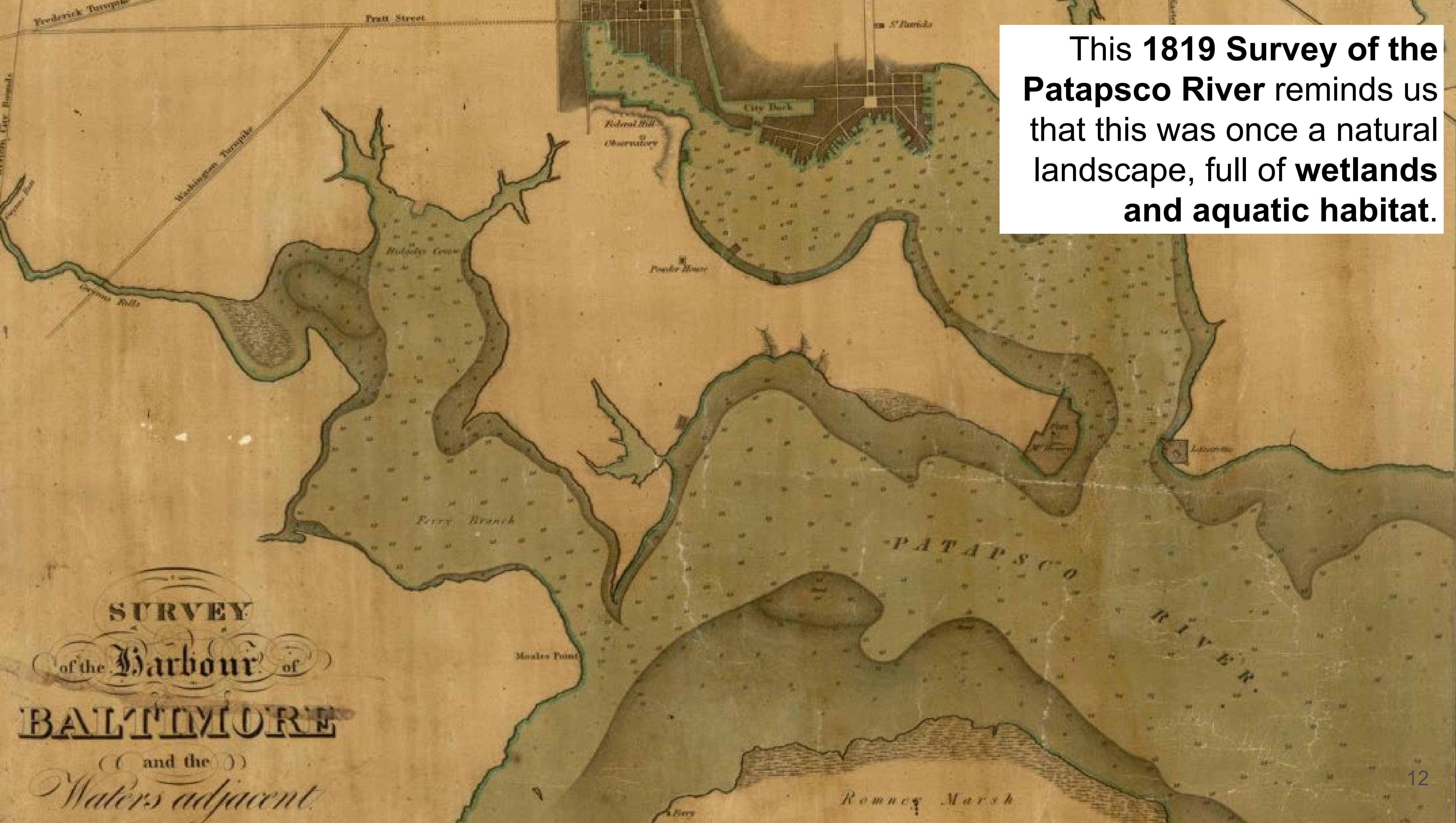




“This is not a capital project with environmental justice elements, but rather an **environmental justice project** with capital elements.

*Dr. Frank Lance, CEO Parks & People Foundation*

This 1819 Survey of the Patapsco River reminds us that this was once a natural landscape, full of **wetlands** and **aquatic habitat**.







**40 years later, in 1859, the growing city and its industrial port are steadily approaching from the north.**



This 1935 municipal map shows the transformation of the Middle Branch to a major industrial port through filling (green) and channel dredging.





A **1972 aerial photo** shows intense industrial and port development.

This was a **globally-significant shipping terminal**, the eastern terminus of the **Western Maryland Railroad**.





USACE 2008 Aquatic Ecosystem Restoration Project: “Of the 3,000 acres of wetlands originally in the Middle Branch, **approximately 218 remain.**” The remaining wetland habitat is impaired, eroding, and dominated by **invasive, non-native species** such as *Phragmites*.





The Baltimore Harbor watershed is a highly urbanized environment. **TMDLs** have been established for nitrogen, phosphorus, total suspended solids, and trash.

According to the MDE Biological Stressor Identification (BSID) Report (2014):

*“Biological communities in the Baltimore Harbor Watershed are likely **degraded due to anthropogenic channelization of stream segments [and] anthropogenic alterations of riparian buffer zones.**” (Page vii)*

*“The stressors identified by ... this report are typical symptoms of “**urban stream syndrome**” and are the result of urban development and anthropogenic disturbances within the watershed. “ (Page 17)*



Shoreline Trash



Erosion





LITTLE HANOVER AND POTEE BRIDGES CROSSING THE PATAPSCO

REIMAGINE MIDDLE BRANCH





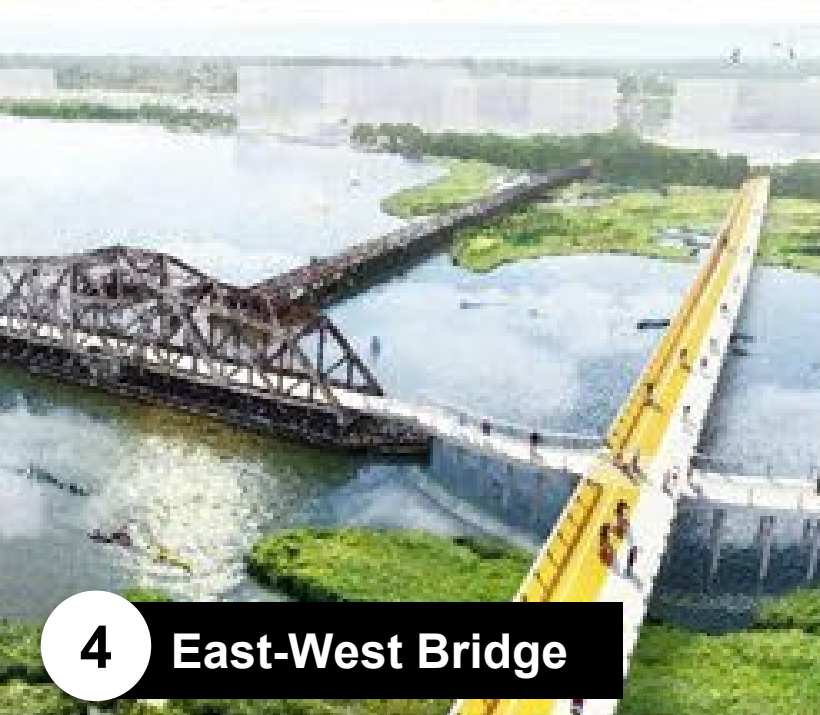
1 Underpass Park



2 Ridgely's Cove Boardwalk



3 Swann Park



4 East-West Bridge



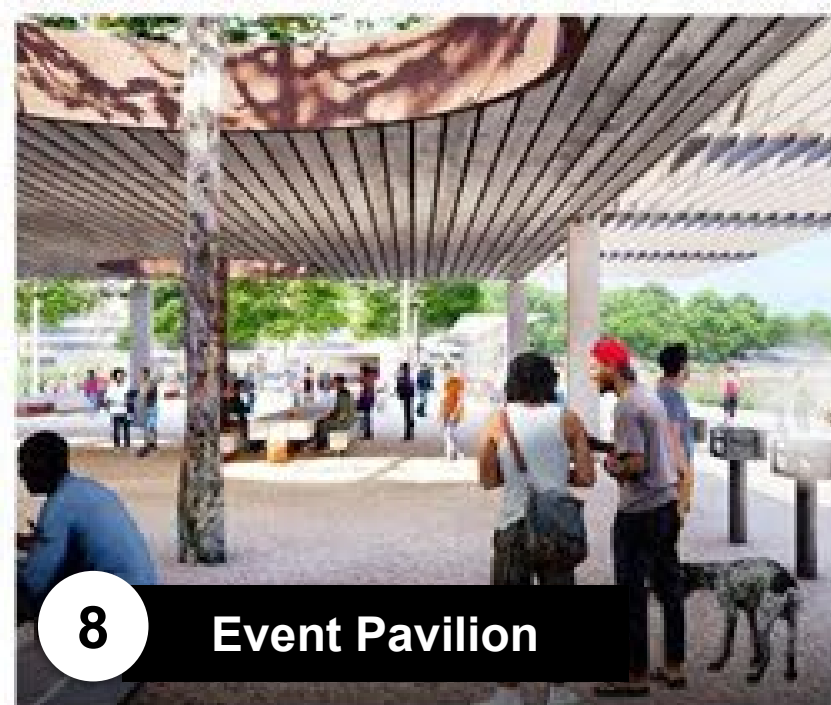
5 Black Sox Park



6 Smith Cove



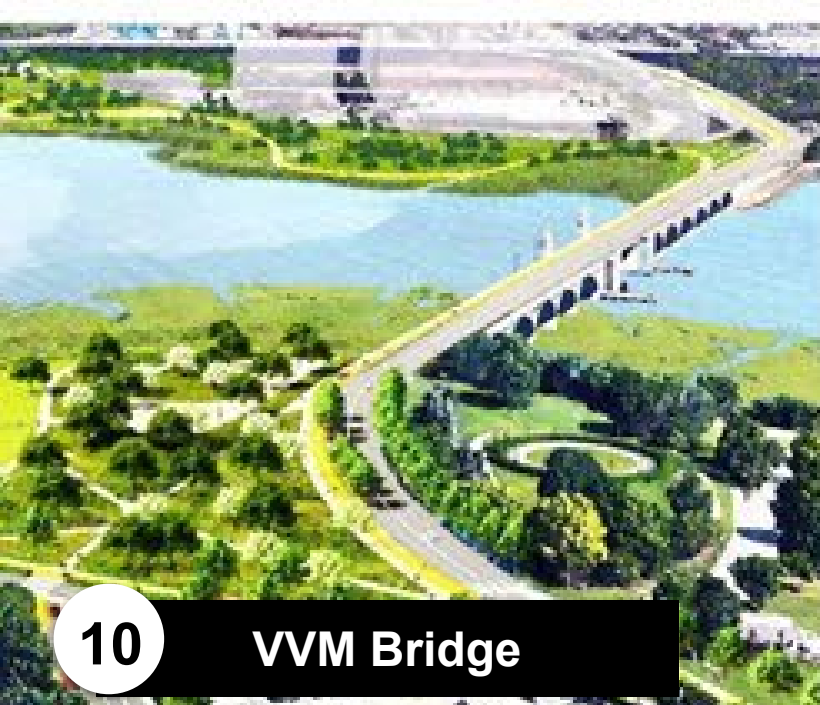
7 Boathouse and Beach



8 Event Pavilion



9 Hilltop Playground



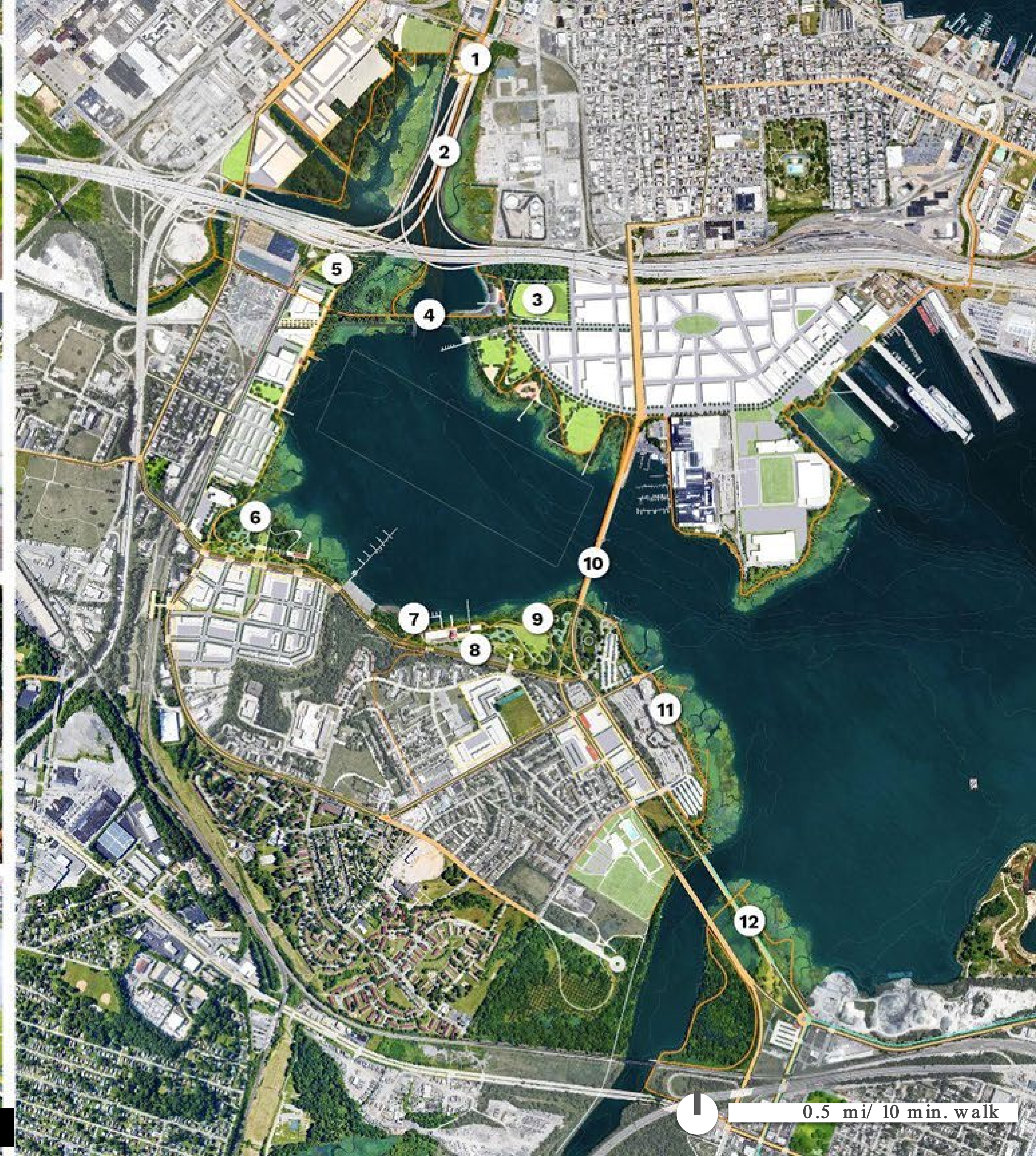
10 VVM Bridge



11 Middle Branch Trail



12 Hanover and Potee Bridges



0.5 mi/ 10 min. walk

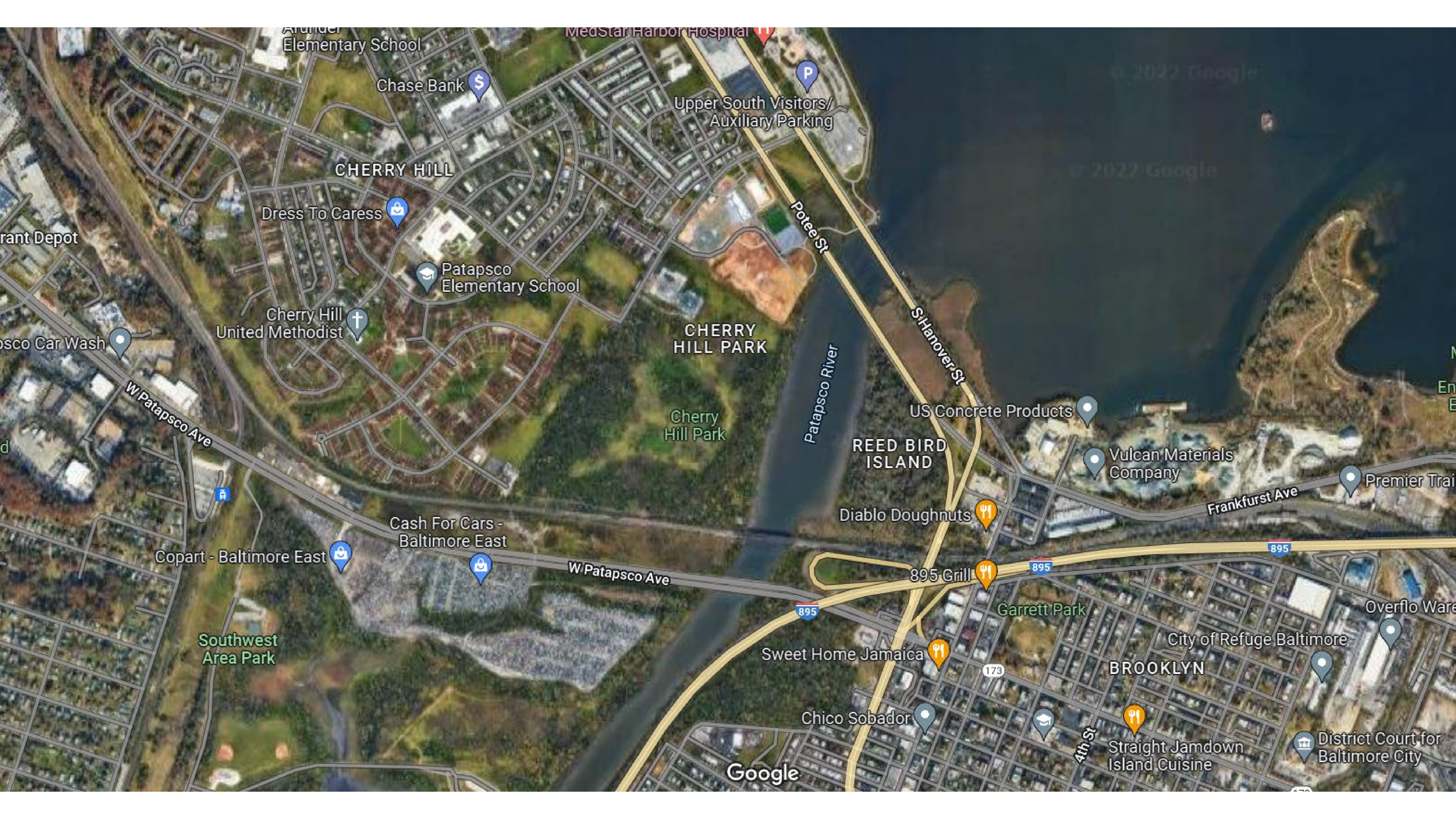




MIDDLE BRANCH PARK AND CHERRY HILL

REIMAGINE MIDDLE BRANCH





Arundel  
Elementary School

Chase Bank

Upper South Visitors/  
Auxiliary Parking

CHERRY HILL

Dress To Caress

Patapsco  
Elementary School

Cherry Hill  
United Methodist

CHERRY  
HILL PARK

Cherry  
Hill Park

Patapsco River

REED BIRD  
ISLAND

US Concrete Products

Vulcan Materials  
Company

Premier Trai

Frankfurt Ave

Diablo Doughnuts

Cash For Cars -  
Baltimore East

Copart - Baltimore East

W Patapsco Ave

895 Grill

Garrett Park

Sweet Home Jamaica

City of Refuge Baltimore

BROOKLYN

Chico Sobador

Straight Jamdown  
Island Cuisine

District Court for  
Baltimore City

Southwest  
Area Park

Overflo Ware

Google















An aerial photograph of the Reedbird Incinerator, a large industrial facility with a prominent white roof, situated in an urban area. The incinerator is surrounded by residential buildings and streets. A road runs along the right side of the facility. The image is in black and white, with a grainy texture.

# Environmental Injustice: Reedbird Incinerator

This major municipal incinerator was sited in the **African-American neighborhood** of Cherry Hill.

Ash was used to **fill in the wetlands**.

Kids had to **play in the shadow** of the smokestacks.



# Letters to the Editor

## Cherry Hill

Sir: Now I see in *The Sun* that the Cherry Hill swimming pool will be surrounded by City maintenance and garages—a lovely environment for 16,000 kids in the Cherry Hill community!

The incinerator is bad enough and the miles of dumping grounds that spew forth noxious odors and colonies of rats. Balance that with a garage repair shop on the other side and we'll have the rumbling cacophony of dump trucks, the breath-taking aroma of refuse and smoke-laden polluted air on the one side and myriad crippled trucks in a perpetual "Anvil Chorus" on the other side—a lovely din and view for a "planned" residential community.

The swimming pool, at present, is situated on a tract that is devoid of trees, field house, or benches—only a very bare baseball diamond. When this community through the Coordinating Council squeezed the swimming pool out of the Park Board in the Fifties, we were assured that this was only the beginning. We would have in subsequent years quite a little park: benches, field house and trees.

In the Fifties also there was a promise that the incinerator would also leave after the land had been filled in. The incinerator is still running at full blast, and I glean from the article that it is an all too permanent fixture on Reedbird avenue, right next to the swimming pool.

City Planning would not destroy the fine residential communities of Guilford and Homeland with such a disgrace, so why turn what was planned to be an ideal residential community in South Baltimore into a commercial and industrial dumping ground?

Madeline W. Murphy.

Baltimore, April 16, 1962



# \$25 Million Middle Branch Fitness & Wellness Center

This new facility in Cherry Hill is the **nicest recreation campus in Baltimore**, featuring indoor and outdoor pools, indoor and outdoor basketball courts, and indoor and outdoor walking tracks.

REIMAGINE MIDDLE BRANCH



# Ripken Field at MBFWC

BCRP, SBGP, and the  
Ripken Foundation  
collaborated on this **\$3  
million turf field** in Cherry  
Hill.

This waterfront field, which  
comes complete with  
lighting, is a major part of  
the **Middle Branch Fitness  
& Wellness Center  
Campus** in Cherry Hill.





# Carroll Park Recreation Center

BCRP and SBGP are reopening this **shuttered Rec Center in Pigtown** after 20 years.

It is being designed with a “**Campus Model**” connects this building to the nearby park, playground, skate park, and school gymnasium.





# South Baltimore Gateway Sports Network

SBGP funds **Free Youth Sports in Low-Income Communities.**

Often these are operated by nonprofit **Community-Based Providers.**



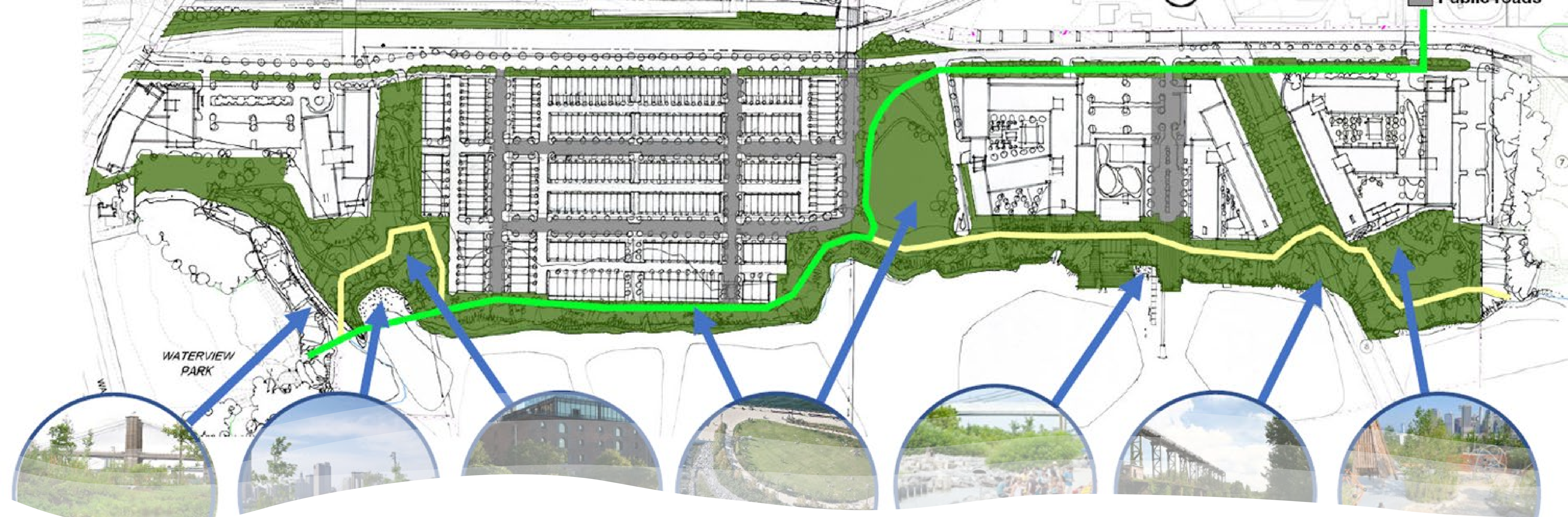
# Youth Fitness & Enrichment Programs

SBGP funds youth programs such as:

- Cherry Hill Eagles
- Restoring Inner City Hope
- Westport Patriots
- Baltimore Community Rowing
- My Girls Gymnastics
- Westport Boys & Girls Club
- Pigtown Climbs







# Major New Park Along Westport Waterfront

BCRP, SBGP, Westport CEDC, the Mayor's Office, and the developer of ONE Westport are collaborating to **create a new park and trail system** along the Westport Waterfront.

Design meetings are **now underway**.





# Black Sox Memorial Park

**Parks & People** is establishing a memorial park for the **Baltimore Black Sox** and other long-overlooked South Baltimore athletic heroes.

This will be located along the **Westport Waterfront**. The exact location will be determined by the planning process now underway.





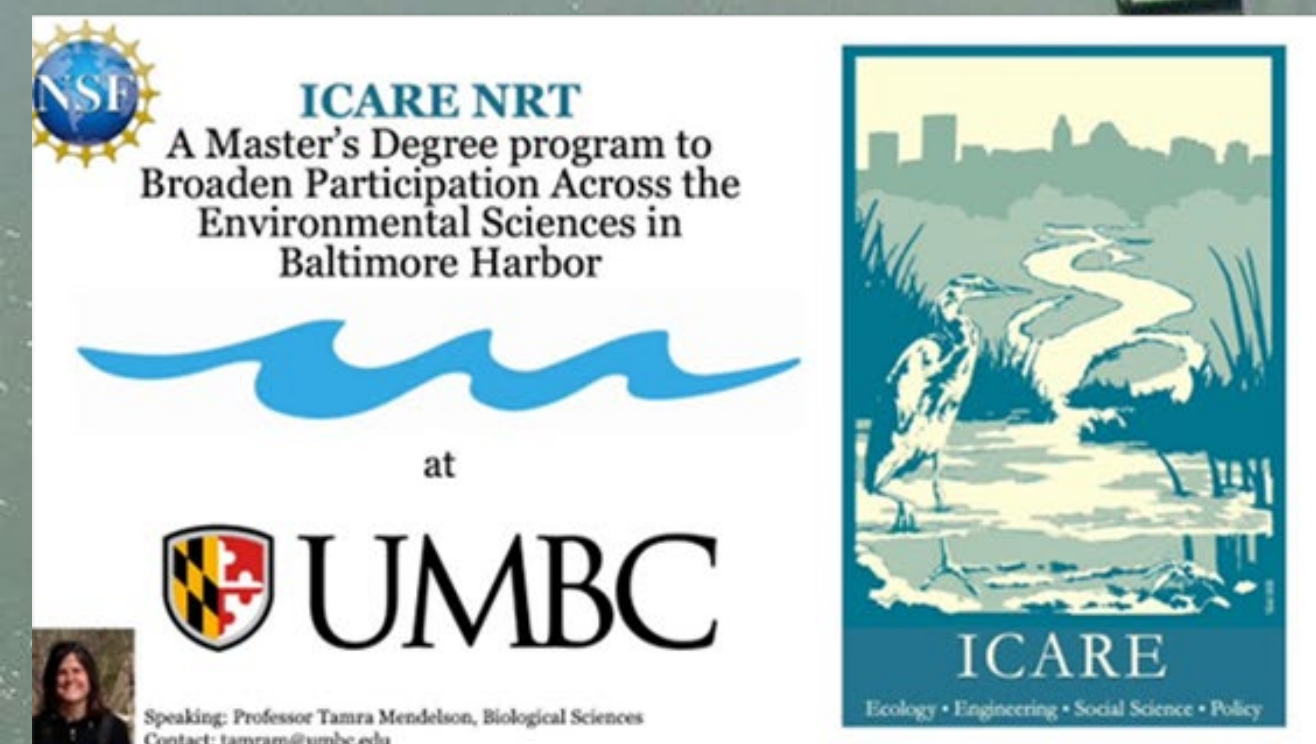
# Middle Branch Marina

The **Environmental Justice Journalism Initiative (EJJI)** has taken over part of the marina for use as an environmental education and career development center. They have now brought in partners:

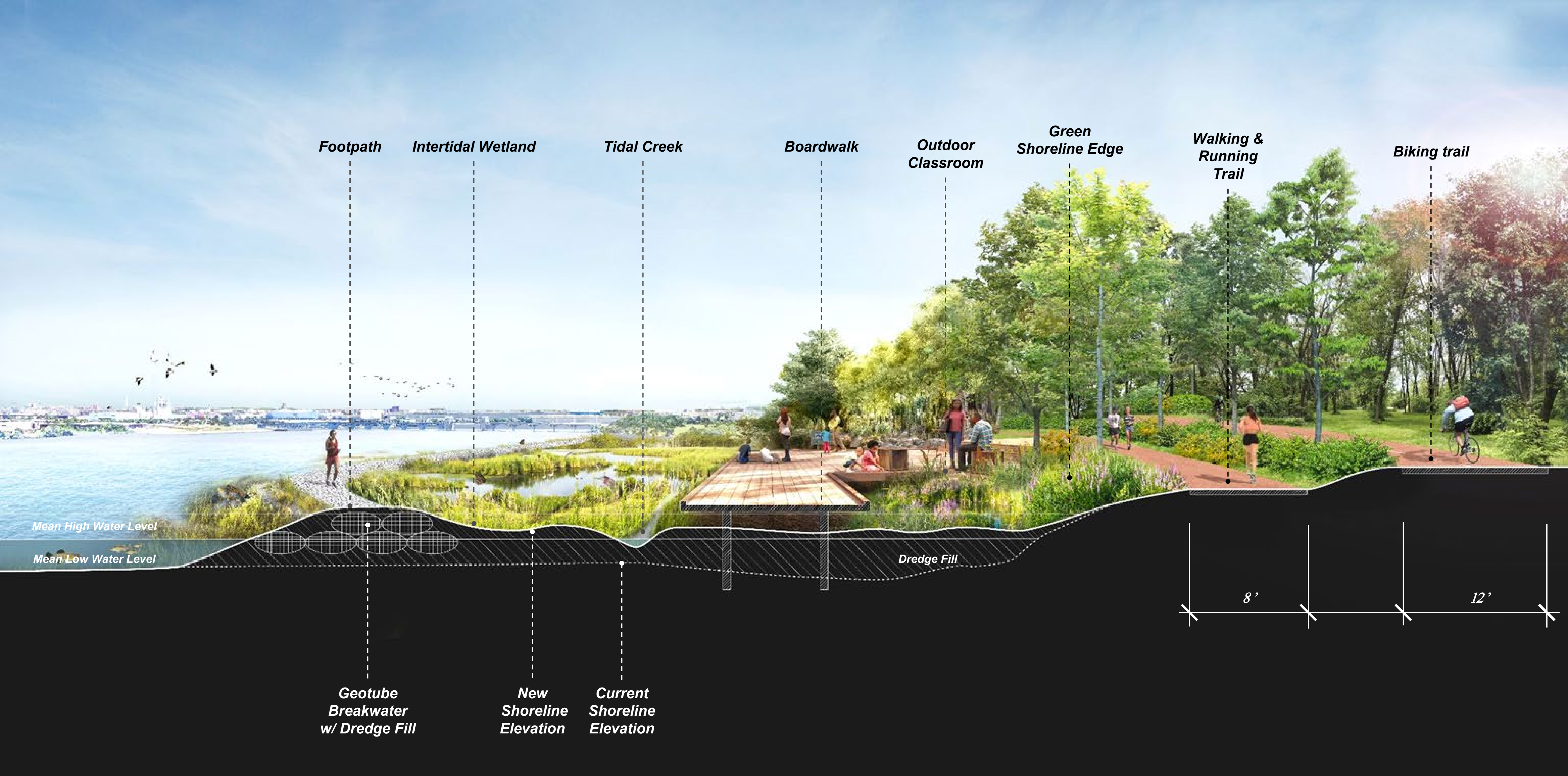
**UMBC** is using the marina to train a new generation of scientists from under-represented backgrounds.

**IMET** has installed a water quality monitoring station as part of DNR's Eyes on the Bay.

**SERC** is also doing research and seeking joint funding with EJJI.







A NEW GREEN AND CONNECTED SHORELINE

REIMAGINE MIDDLE BRANCH

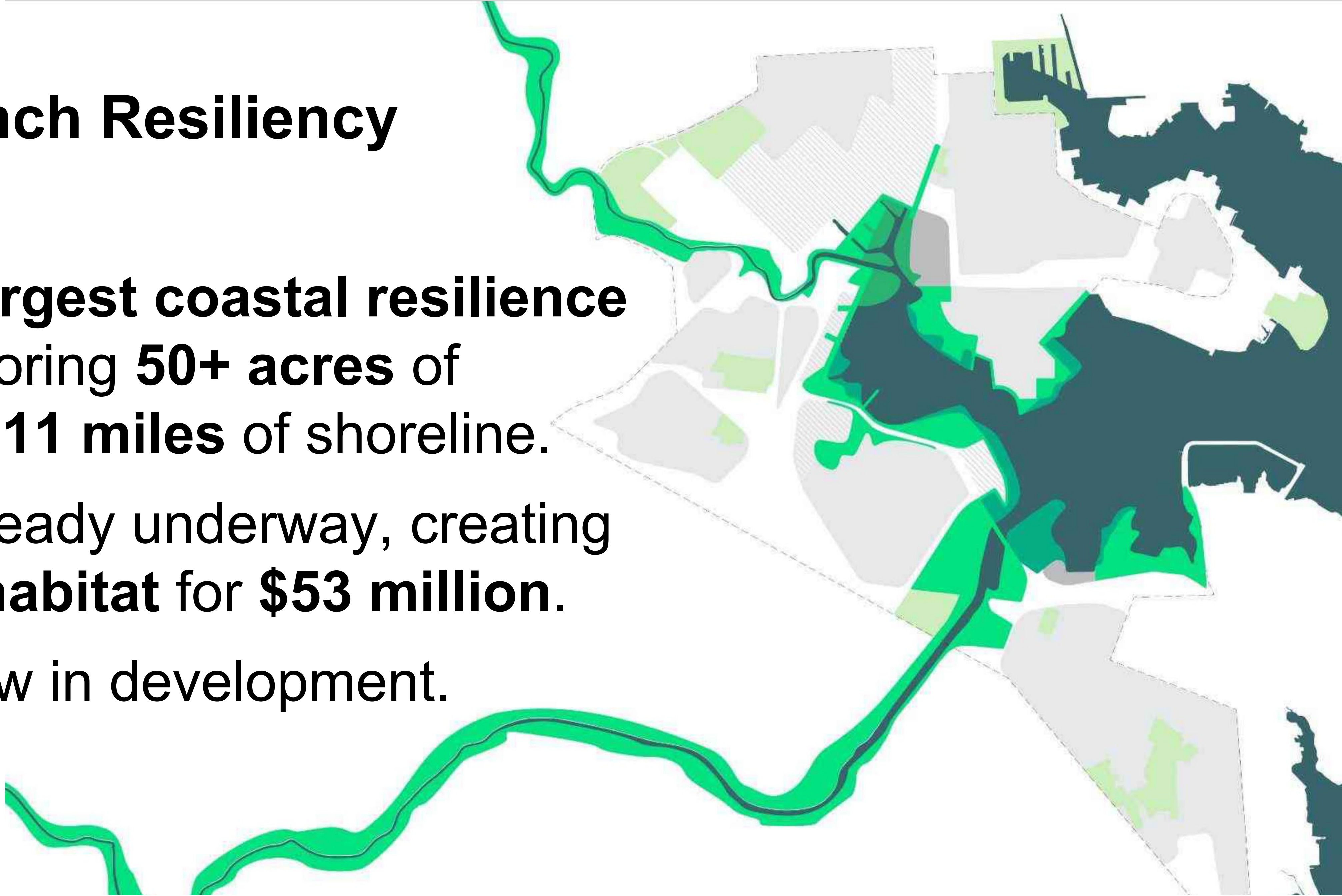


# Middle Branch Resiliency Initiative

Maryland's **largest coastal resilience** initiative, restoring **50+ acres** of habitat along **11 miles** of shoreline.

Stage 1 is already underway, creating **40 acres of habitat** for **\$53 million**.

Stage 2 is now in development.



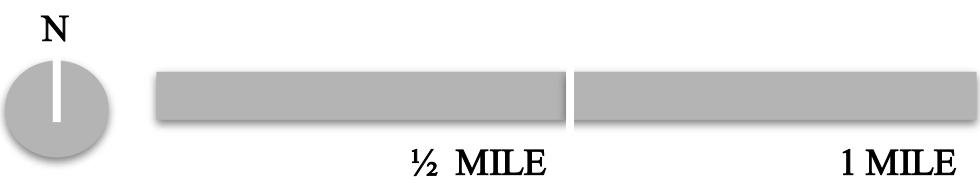


# LIVING SHORELINE PROJECTS

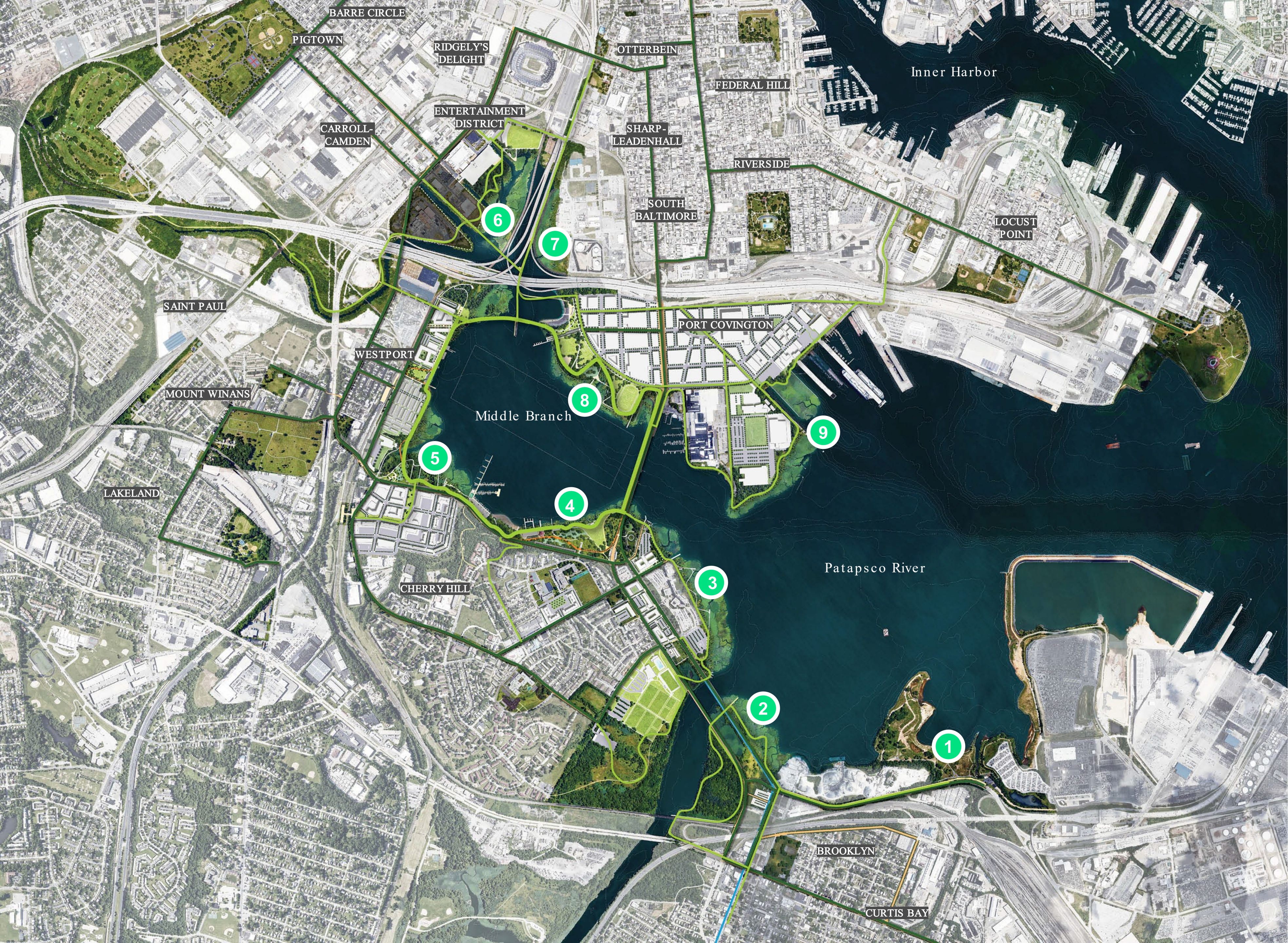
- 1 Masonville Cove
- 2 Reedbird Island 'Site 5a'
- 3 MedStar Harbor Hospital
- 4 Middle Branch Park
- 5 Smith Cove
- 6 Ridgely's Cove
- 7 BGE Spring Garden
- 8 West Covington Park
- 9 Port Covington

Trails

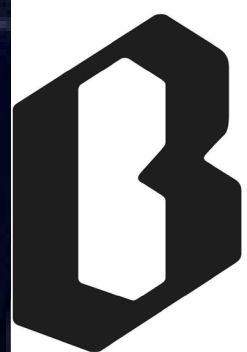
Complete Streets



REIMAGINE MIDDLE BRANCH







THE  
BALTIMORE  
BANNER



**Middle Branch preservation and redevelopment project kicks off with \$48 million in grants**

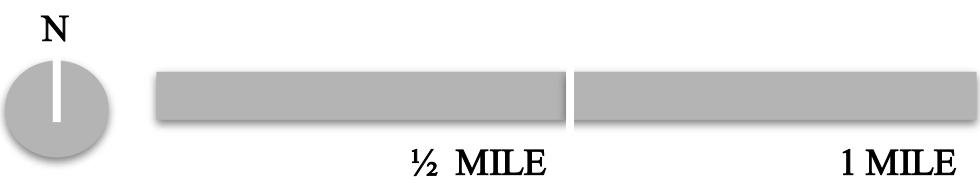


# LIVING SHORELINE PROJECTS

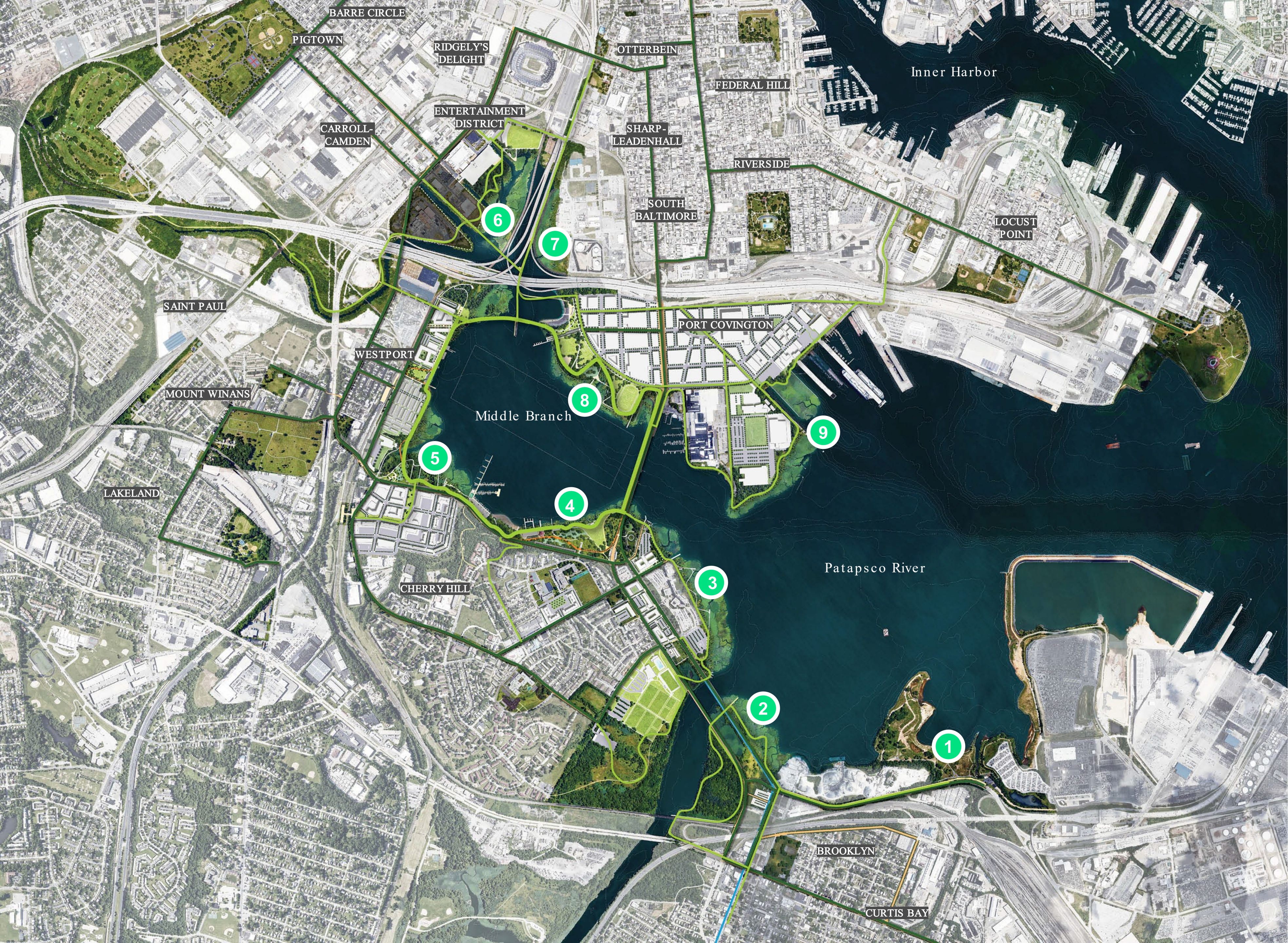
- 1 Masonville Cove
- 2 Reedbird Island 'Site 5a'
- 3 MedStar Harbor Hospital
- 4 Middle Branch Park
- 5 Smith Cove
- 6 Ridgely's Cove
- 7 BGE Spring Garden
- 8 West Covington Park
- 9 Port Covington

Trails

Complete Streets



REIMAGINE MIDDLE BRANCH





# LIVING SHORELINE PROJECTS

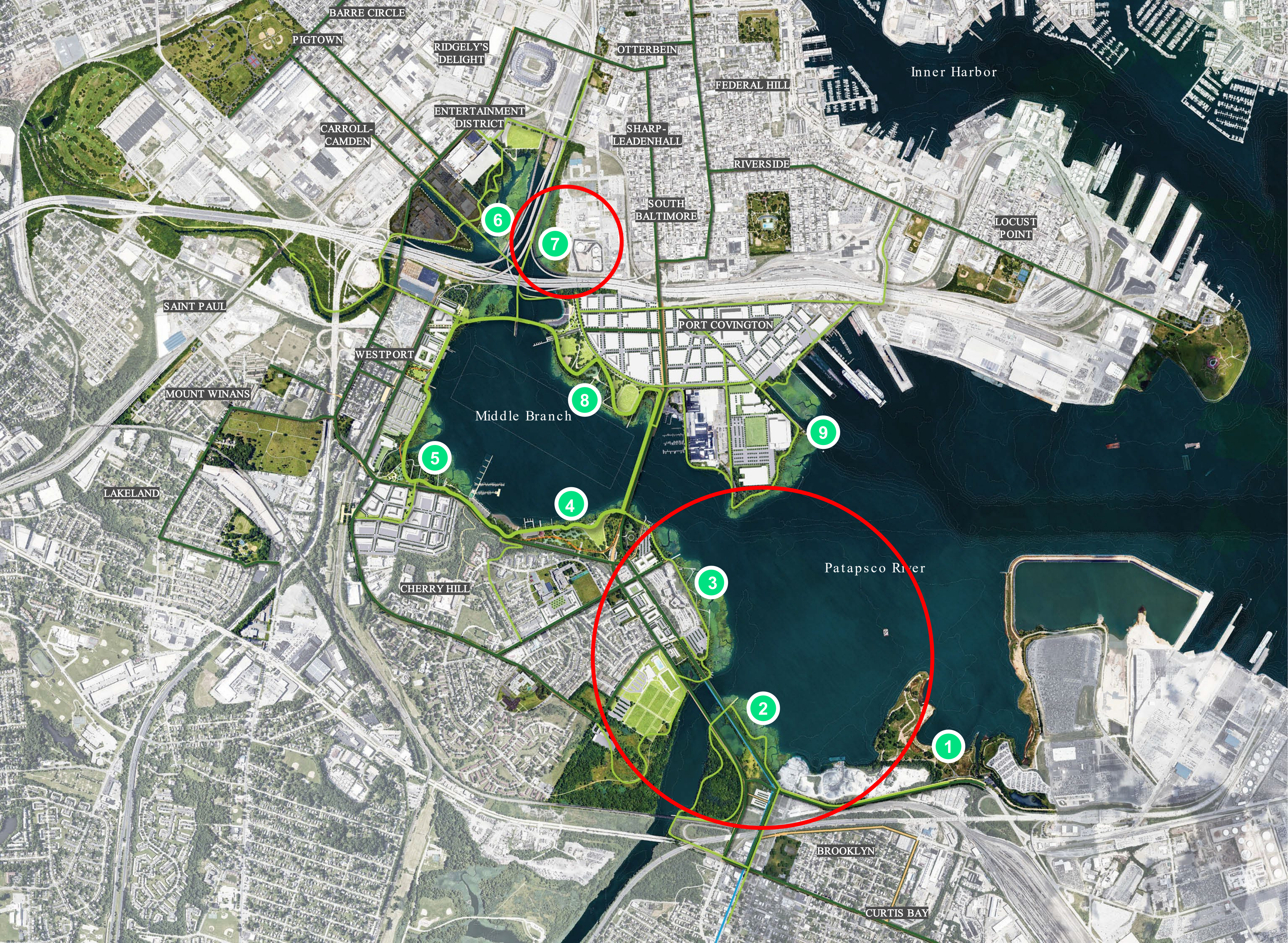
- 1 Masonville Cove
- 2 Reedbird Island 'Site 5a'
- 3 MedStar Harbor Hospital
- 4 Middle Branch Park
- 5 Smith Cove
- 6 Ridgely's Cove
- 7 BGE Spring Garden
- 8 West Covington Park
- 9 Port Covington

Trails

Complete Streets



REIMAGINE MIDDLE BRANCH

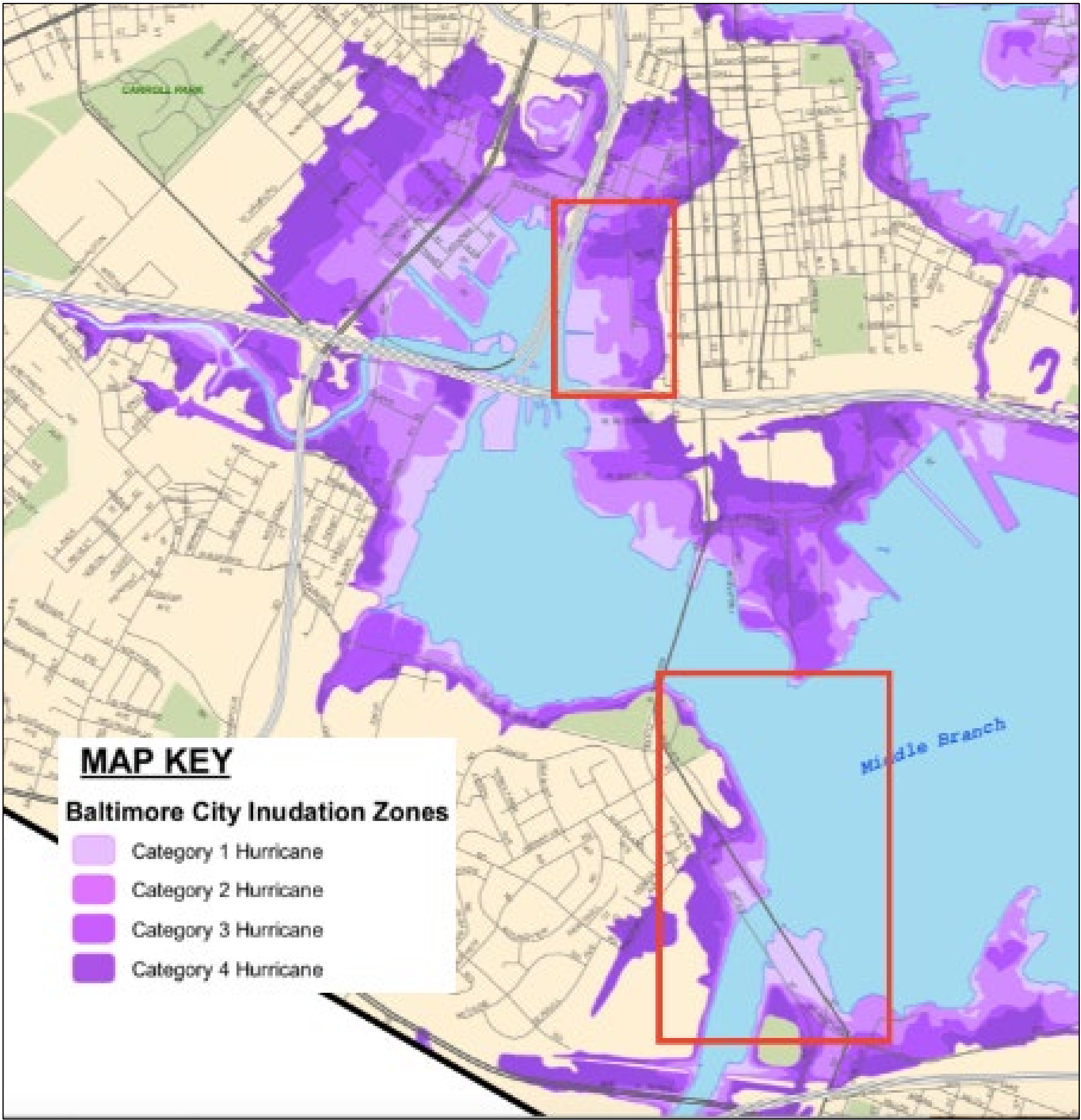




# Chronic Flood Risk to Critical Infrastructure



NOAA Coastal Flood Exposure Mapper



Baltimore City Hurricane Inundation Map



Baltimore City Nuisance Flooding Map



# Middle Branch Resiliency Initiative: Stage 1













# REIMAGINE MIDDLE BRANCH

- Middle Branch Loop Trail
- Neighborhood Connectors
- Complete Streets
- Water Trails
- Water Access Stops
- African American Heritage Site
- Future Development Opportunity
- 1 Middle Branch Park
- 2 Event Lawn
- 3 Event Pavilion
- 4 Hilltop Playground
- 5 Boathouse and Kayak Launch
- 6 Smith Cove Boardwalk
- 7 Woodland Playground
- 8 East-West Bridge
- 9 East-West Bridge Landing
- 10 Ridgely's Cove Boardwalk



0.25 mile





*We are on a brief break.*

The next session  
will start at 2:00.



EPA MID-ATLANTIC REGION  
2023 SUMMIT

Engaging and Investing for a  
Healthy and Sustainable Future