

Table 1
 Work Area Continuous Air Monitoring Results
 East Palestine Derailment Site
 East Palestine, Columbiana County, Ohio

Monitoring Period: 05/30/2023 00:00 through 05/31/2023 09:39

Air Monitoring Instrument: Serial Number	Analyte	Screening Level ¹	Screening Level Exceeded?	8-hour Period Concentration Range	Average of All 8-hour Periods
8533230602	PM _{2.5} (mg/m ³)	0.035 (mg/m ³)	Yes ²	0.035 to 0.048	0.041
	PM ₁₀ (mg/m ³)	0.070 (mg/m ³)	Yes ²	0.052 to 0.080	0.065
8533230604	PM _{2.5} (mg/m ³)	0.035 (mg/m ³)	Yes ²	0.027 to 0.042	0.035
	PM ₁₀ (mg/m ³)	0.070 (mg/m ³)	No	0.036 to 0.053	0.044
8533183117	PM _{2.5} (mg/m ³)	0.035 (mg/m ³)	Yes ²	0.025 to 0.037	0.031
	PM ₁₀ (mg/m ³)	0.070 (mg/m ³)	No	0.032 to 0.049	0.039
8533213308	PM _{2.5} (mg/m ³)	0.035 (mg/m ³)	Yes ²	0.027 to 0.040	0.034
	PM ₁₀ (mg/m ³)	0.070 (mg/m ³)	No	0.033 to 0.052	0.043
8533183902	PM _{2.5} (mg/m ³)	0.035 (mg/m ³)	No	0.004 to 0.011	0.007
	PM ₁₀ (mg/m ³)	0.070 (mg/m ³)	No	0.004 to 0.012	0.008
8533153004	PM _{2.5} (mg/m ³)	0.035 (mg/m ³)	No	0.008 to 0.012	0.01
	PM ₁₀ (mg/m ³)	0.070 (mg/m ³)	No	0.010 to 0.016	0.013
8533230702	PM _{2.5} (mg/m ³)	0.035 (mg/m ³)	Yes ²	0.027 to 0.047	0.032
	PM ₁₀ (mg/m ³)	0.070 (mg/m ³)	No	0.029 to 0.050	0.034
W01A00000611	VOC (ppm)	0.5 (ppm)	No	0.00 to 0.00	0.00
	LEL (%)	>5%	No	0.00 to 0.00	0.00
W01A00002176	VOC (ppm)	0.5 (ppm)	No	0.00 to 0.01	0.00
W01A00002178	VOC (ppm)	0.5 (ppm)	No	0.00 to 0.00	0.00
W01A00002184	VOC (ppm)	0.5 (ppm)	No	0.00 to 0.00	0.00
W01B00002178	VOC (ppm)	0.5 (ppm)	No	0.00 to 0.00	0.00
	LEL (%)	>5%	No	0.00 to 0.72	0.18
W01B00002207	VOC (ppm)	0.5 (ppm)	No	0.00 to 0.00	0.00
	LEL (%)	>5%	No	0.00 to 0.58	0.03

Notes:

¹ Site-Specific Screening Levels stated in the Tetra Tech Air Monitoring and Sampling Plan. Screening levels were modified on March 16, 2023 to reflect updated operation procedures on when to apply mitigation methods to reduce dust. Action levels set by health departments have not changed.

² Vehicle traffic observed during monitoring period near monitoring instrument.

Air monitoring measurements have been averaged over a 8-hour time period and summarized above.

Air monitoring is not performed during inclement weather conditions/rain and thunderstorms.

Abbreviations:

> - Greater than

% - Percent

LEL - Lower Explosive Limit

mg/m³ - milligrams per meter cubed

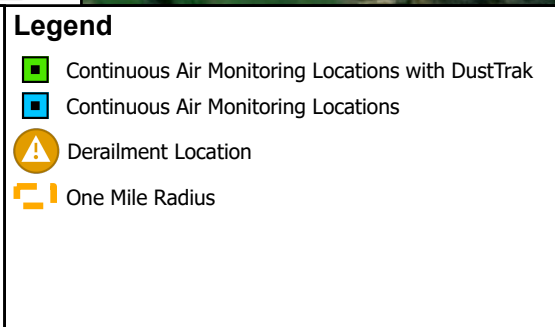
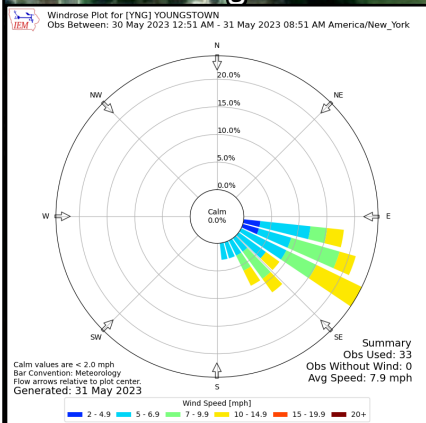
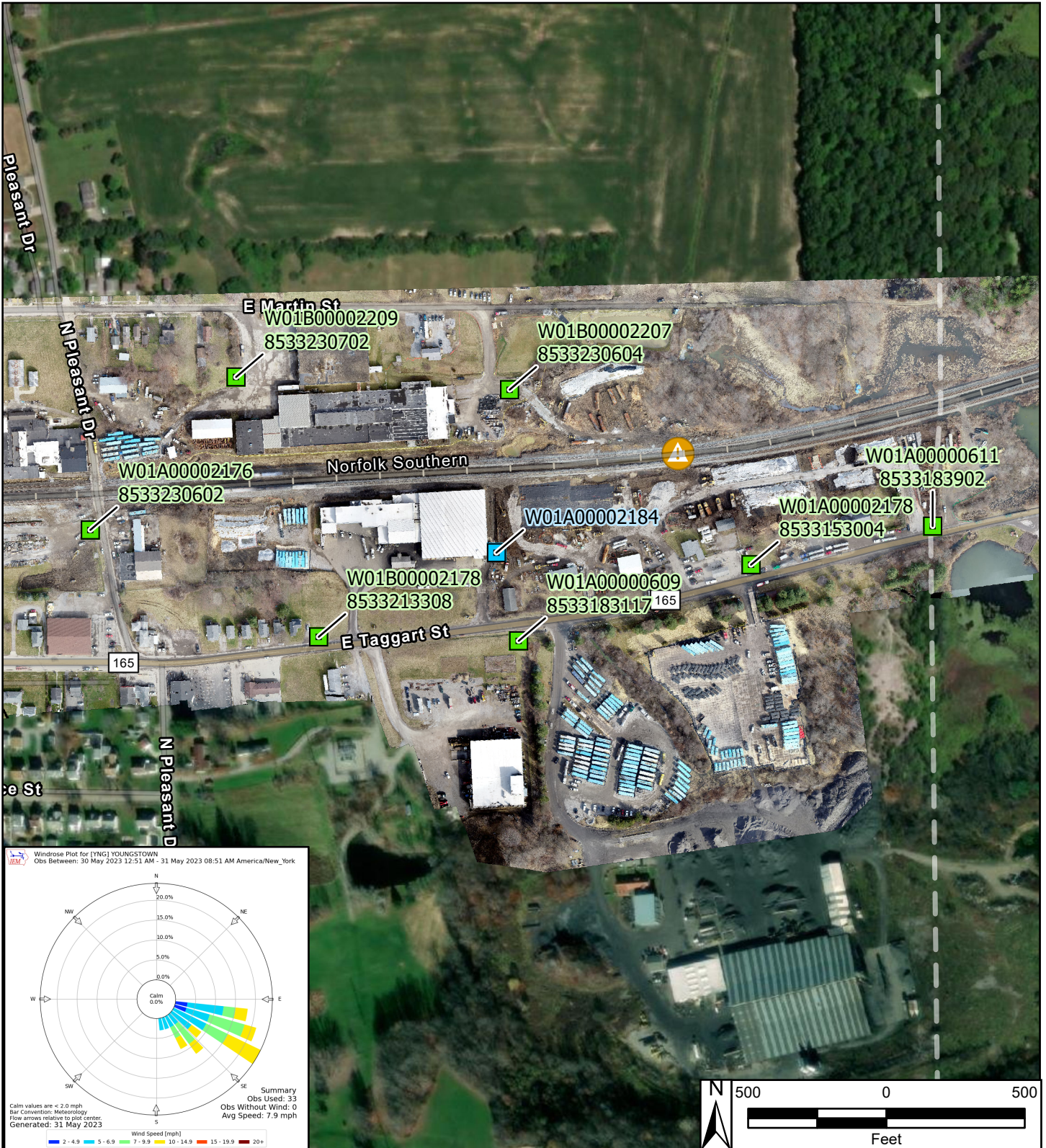
PM_{2.5} - Particulate Matter, diameter 2.5 micrometers and smaller

PM₁₀ - Particulate Matter, diameter 10 micrometers and smaller

ppm - Parts per million

S/N - Serial number

VOC - Volatile organic compound



East Palestine Derailment ER Site
 East Palestine, Columbiana County, OH 44413

Figure 1
Continuous Air Monitoring Work Area Stations

Prepared For: EPA | Prepared By: Tetra Tech Inc.