

Table 1  
Community Continuous Air Monitoring Results  
East Palestine Derailment Site  
East Palestine, Columbiana County, Ohio

**Monitoring Period: 06/16/2023 00:00 through 06/17/2023 11:12**

Air Monitoring Instrument: Serial Number	Analyte	Screening Level <sup>1</sup>	Screening Level Exceeded?	8-hour Period Concentration Range	Average of All 8-hour Periods
8533230702	PM <sub>2.5</sub> (mg/m <sup>3</sup> )	0.035 (mg/m <sup>3</sup> )	Yes <sup>2</sup>	0.036 to 0.089	0.059
	PM <sub>10</sub> (mg/m <sup>3</sup> )	0.070 (mg/m <sup>3</sup> )	Yes <sup>2</sup>	0.038 to 0.094	0.062
8533183117	PM <sub>2.5</sub> (mg/m <sup>3</sup> )	0.035 (mg/m <sup>3</sup> )	Yes <sup>2</sup>	0.039 to 0.084	0.06
	PM <sub>10</sub> (mg/m <sup>3</sup> )	0.070 (mg/m <sup>3</sup> )	Yes <sup>2</sup>	0.041 to 0.086	0.062
8533230504	PM <sub>2.5</sub> (mg/m <sup>3</sup> )	0.035 (mg/m <sup>3</sup> )	Yes <sup>2</sup>	0.037 to 0.100	0.074
	PM <sub>10</sub> (mg/m <sup>3</sup> )	0.070 (mg/m <sup>3</sup> )	Yes <sup>2</sup>	0.038 to 0.103	0.076
W01A0000609	VOC (ppm)	0.5 (ppm)	No	0.00 to 0.00	0.00
	LEL (%)	>5%	No	0.00 to 0.00	0.00
W01A00002175	VOC (ppm)	0.5 (ppm)	No	0.00 to 0.00	0.00
W01A00002181	VOC (ppm)	0.5 (ppm)	No	0.00 to 0.00	0.00
W01A00002182	VOC (ppm)	0.5 (ppm)	No	0.00 to 0.00	0.00
	LEL (%)	>5%	No	0.00 to 0.00	0.00
W01B00002162	VOC (ppm)	0.5 (ppm)	No	0.00 to 0.00	0.00
	LEL (%)	>5%	No	0.00 to 0.00	0.00
W01B00002164	VOC (ppm)	0.5 (ppm)	No	0.00 to 0.00	0.00
W01B00002170	VOC (ppm)	0.5 (ppm)	No	0.00 to 0.05	0.01
W01B00002172	VOC (ppm)	0.5 (ppm)	No	0.00 to 0.00	0.00
W01B00002181	VOC (ppm)	0.5 (ppm)	No	0.00 to 0.00	0.00
W01B00002183	VOC (ppm)	0.5 (ppm)	No	0.00 to 0.00	0.00
W01B00002206	VOC (ppm)	0.5 (ppm)	No	0.00 to 0.02	0.00
W01B00002208	VOC (ppm)	0.5 (ppm)	No	0.00 to 0.00	0.00
W01B00002209	VOC (ppm)	0.5 (ppm)	No	0.00 to 0.01	0.00
	LEL (%)	>5%	No	0.00 to 0.00	0.00
W01B00002220	VOC (ppm)	0.5 (ppm)	No	0.00 to 0.00	0.00
W01B00002221	VOC (ppm)	0.5 (ppm)	No	0.00 to 0.00	0.00
W01B00002222	VOC (ppm)	0.5 (ppm)	No	0.00 to 0.00	0.00
W01B00002223	VOC (ppm)	0.5 (ppm)	No	0.00 to 0.00	0.00

**Notes:**

<sup>1</sup> Site-Specific Screening Levels stated in the Tetra Tech Air Monitoring and Sampling Plan. Screening levels were modified on March 16, 2023 to reflect updated operation procedures on when to apply mitigation methods to reduce dust. Action levels set by health departments have not changed.

<sup>2</sup> Vehicle traffic observed during monitoring period near monitoring instrument.

Air monitoring measurements have been averaged over a 8-hour time period and summarized above.

Air monitoring is not performed during inclement weather conditions/rain and thunderstorms.

**Abbreviations:**

mg/m<sup>3</sup> - milligrams per meter cubed

PM<sub>2.5</sub> - Particulate Matter, diameter 2.5 micrometers and smaller

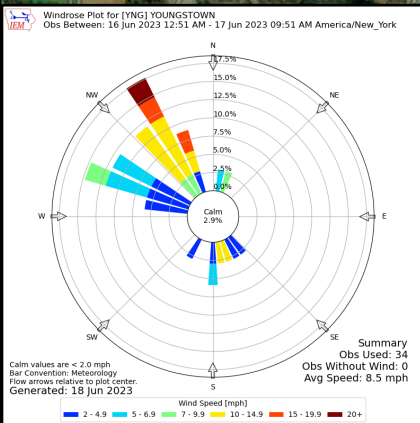
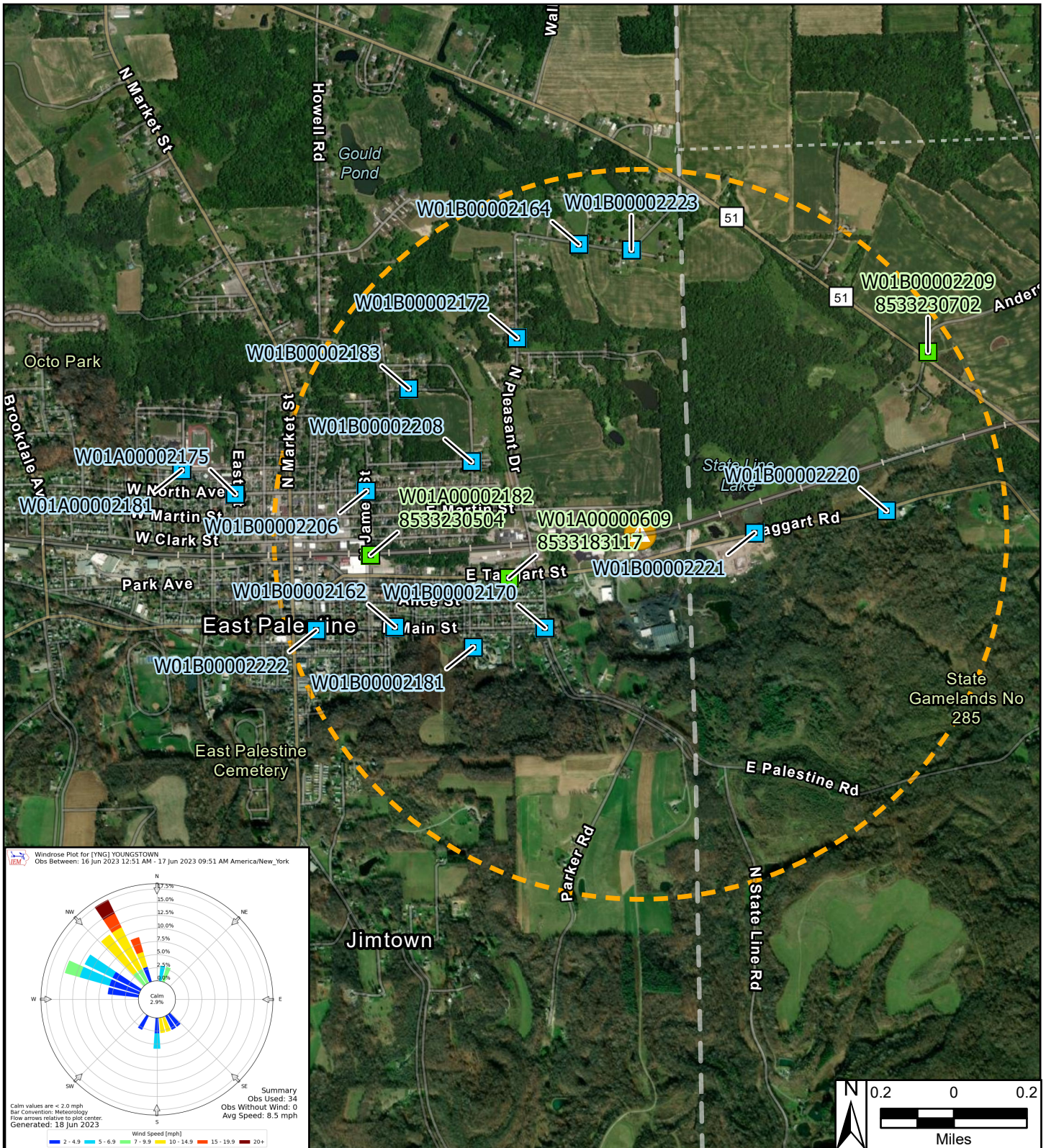
PM<sub>10</sub> - Particulate Matter, diameter 10 micrometers and smaller

ppm - Parts per million

S/N - Serial number

VOC - Volatile organic compound

We are in the process of ensuring this document is accessible to all audiences. If you need assistance accessing this document, or any materials on the EPA East Palestine, Ohio emergency response webpages, please contact the Region 5 Public Information Officer on-call [r5\\_eastpalestine@epa.gov](mailto:r5_eastpalestine@epa.gov)



**Reference Map**



**Legend**

- Continuous Air Monitoring Locations with DustTrak
- Continuous Air Monitoring Locations
- One Mile Radius
- Derailment Location

East Palestine Derailment ER Site  
 East Palestine, Columbiana County, OH 44413

**Figure 1**  
**Continuous Air Monitoring Community Stations**

