

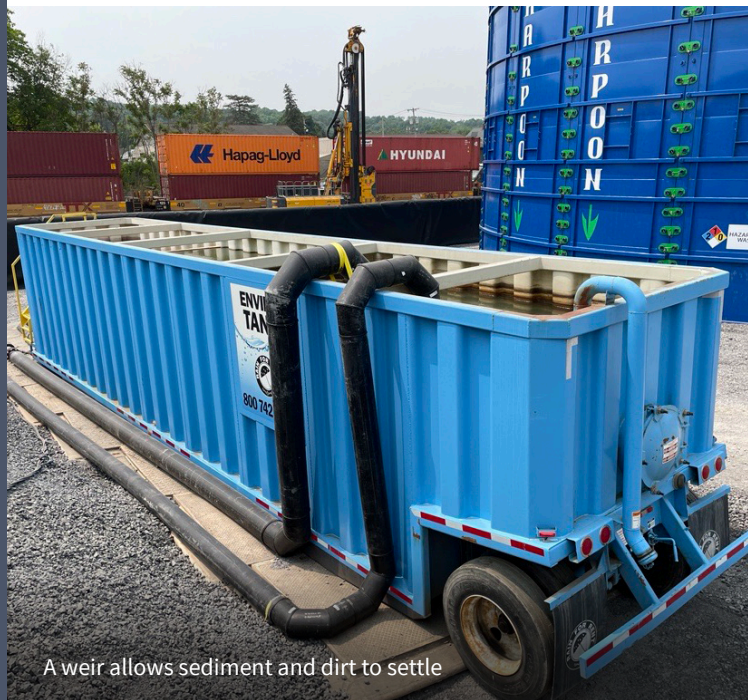
# East Palestine

## TRAIN DERAILMENT RESPONSE

Serving East Palestine, Negley, Darlington and surrounding communities

# NEWSLETTER

June 13, 2023



A weir allows sediment and dirt to settle

## PROGRESS MADE

### Public Health Partners Presented to the Community

On June 6, EPA hosted a Public Health Information session at the First United Presbyterian Church. The CDC's Agency for Toxic Substances & Disease Registry, the Columbiana County, Ohio & Pennsylvania Health Departments, and the Cincinnati Drug & Poison Control Center were in attendance to discuss health and address health concerns from the train derailment. The meeting was well attended, and the recording is available at [www.epa.gov/east-palestine-oh-train-derailment](http://www.epa.gov/east-palestine-oh-train-derailment)

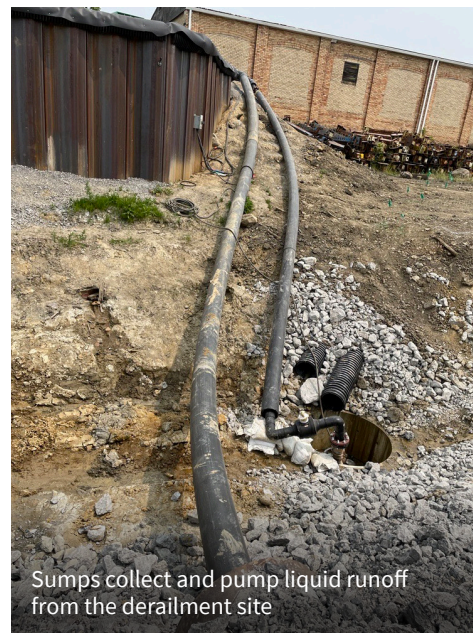
### Ongoing Removal and Quicker Loading of Liquid Waste

Each day liquid waste is removed from the large blue lake tanks by six to eight trucks (approximately 5,000 gallons each). The loading of each truck takes a crew of about eight workers which takes approximately 16 to 18 minutes. Workers connect

a hose from the blue lake tanks to the top of each truck and use large meter sticks to measure and record the volume loaded into each truck. Liquid waste trucks have placarding on all four sides identifying them as containing hazardous material. Placards are required by the Department of Transportation to warn responders of the presence of hazardous materials being transported.

### Sumps Collect and Pump Site Water

A series of sumps collect and move water that naturally accumulates around the site into the large blue lake tanks for containment. Before entering the large blue lake tanks, the liquid travels through a weir, a smaller blue tank that allows sediment and dirt to settle to the bottom, while the water is removed from the top of the tank. Once inside the blue tanks, liquid waste is removed for off-site disposal.



# THE WEEK AHEAD

## AT THE SITE

- North Pleasant Drive will remain intermittently closed for derailment cleanup and track reconstruction. Residents are encouraged to use James Street as an alternate route to avoid delays.
- Contamination in the burn pit areas, north track and centerline have been removed and the areas have been backfilled. Only one grid area of the south track still needs to be excavated, which will be done after the north track is rebuilt.
- Truck traffic continues near the derailment site.
- Taggart Street remains closed to the public.

## IN THE GREATER COMMUNITY

- Evaluation of stream assessments of Sulphur Run and Leslie Run continues. These actions will help determine the level of contamination and removal action activities.
- Air monitoring continues at 23 locations around town.
- EPA's Community Welcome Center at 25 North Market Street in East Palestine remains open to the public Monday through Friday from 8 a.m. to 8 p.m. and Saturday from 10 a.m. to 4 p.m. The Center will be closed on Monday, June 19 in recognition of the Juneteenth federal holiday.

# COMMUNITY CORNER

The "HomeTown Walk/5K Run" was held this past Saturday, June 10. This event aids East Palestine village's youth programs and raises the awareness of local businesses. More than \$140,000 was raised and over 500 runners and walkers participated in the 5K. NFL Hall of Famer Jerome Bettis was there to start the race and congratulate everyone at the finish line.



Runners at HomeTown Walk and 5K Run

## DID YOU KNOW?

Eastern Moles spend most of their lives underground and are amazing tunnelers – they can hollow out a 160-foot burrow in just one night. The eastern mole is chipmunk-sized and hairless, with tiny eyes and a pointed snout. Their favorite food by far are earthworms, but they will also gobble up centipedes, spiders, beetles, ant pupae, snails, slugs, and seeds, as well as the larvae of insects. Moles are solitary animals that mate in late winter and early spring. Females give birth to three to four babies at a time. By five to six weeks, mole babies, called pups, leave their mother and their home tunnel completely. Moles can live more than six years.



Baby moles found by East Palestine residents on June 5

# TOP 3 QUESTIONS OF THE WEEK

## 01 Did drinking water samples from the American Legion in East Palestine have detections of vinyl chloride?

No. The drinking water supplied to the American Legion from the Village municipal water system has been tested weekly since the incident and vinyl chloride has not been detected in the drinking water, nor any of the water supply wells. A filter company collected water at the American Legion, and had it spiked with vinyl chloride at a lab to determine if the tools used by the lab could accurately measure vinyl chloride and to evaluate filters sold by the company. Some of the company's messaging around this testing incorrectly stated that the vinyl chloride came from the drinking water. The company has been made aware of the confusion and is working to correct the messaging.

## 02 Can smoke from the Canadian wildfires cause health concerns?

Most healthy adults and children will recover quickly from smoke exposure and will not have long-lasting health effects. But people with chronic diseases, such as asthma, other lung disease, or cardiovascular disease are at greater risk of experiencing more severe health effects. Children, pregnant people, and people over 65 also are more vulnerable to health effects from smoke exposure. Limit your outdoor exercise when it is smoky or choose lower-intensity activities to reduce your smoke exposure. When indoors, take steps to keep your indoor air cool and clean. Check the "Safety Minute" for more information.

## 03 How do federal and state agencies get notified of a chemical or oil spill requiring an emergency response?

By law, companies or individuals who spill hazardous chemicals or oil are required to call the National Response Center (NRC) if the quantity is above reporting limits. The NRC then notifies federal, state and local responders. Most States have additional reporting requirements that are separate from the NRC.

## SITE STATUS CHECK As of June 9



**NORTH TRACK:**  
Estimated completion by the end of June  
**SOUTH TRACK:**  
Tracks operational



**LESLIE RUN:** Stream assessments are ongoing to determine next steps  
**SULPHUR RUN:** Bypass carries upstream water past derailment site

**20.2 million**  
est. gallons of wastewater shipped offsite



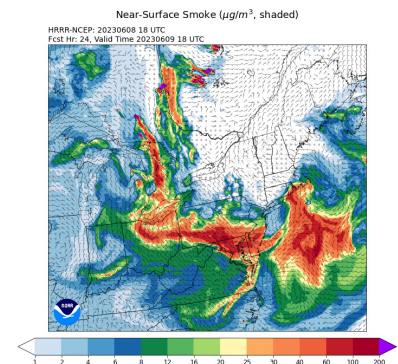
**65,328**  
est. tons of solid waste shipped offsite



## SAFETY MINUTE

### Wildfire Smoke from Canada

A weather system carries smoke from wildfires in Canada hundreds of miles into the U.S., pushing air quality into the unhealthy or worse categories in areas from the mid-Atlantic through the Northeast and parts of the Upper Great Lakes. EPA encourages people living in these areas to check their Air Quality Index (AQI) throughout the day to see their local air quality and steps to take to reduce smoke exposure and protect their health. Pay attention to any health symptoms if you have asthma, COPD, heart disease, or are pregnant. Get medical help if you need it. You can monitor your local outdoor air quality on [AirNow.gov](https://airnow.gov) or by downloading the AirNow app.



Wildfire smoke crossing the US from Canada  
Image credit: National Weather Service



(330) 775-6517



R5\_eastpalestine@epa.gov

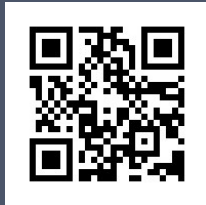


[epa.gov/east-palestine-oh-train-derailment](https://epa.gov/east-palestine-oh-train-derailment)

# UPCOMING COMMUNITY EVENTS

- On June 14, the East Palestine Memorial Library is hosting a **“Meet the Helpers Event”** at 6 p.m. in the library parking lot. This is an opportunity to meet and interact with responders and see their vehicles up close. EPA responders will be at the event with the Trace Atmospheric Gas Analyzer (TAGA) bus.
- On June 20, The Way Station and First United Presbyterian Church will host a Public Health Resource information session from 6 to 7 p.m. at 109 West Rebecca Street in East Palestine. East Liverpool City Hospital, the Community Action Agency of Columbiana County, and Columbiana County Mental Health will present on health resources and services available for residents.

To watch recordings of earlier informational sessions, check out the **“Videos and Photos”** section of EPA’s website: [epa.gov/east-palestine-oh-train-derailment/videos-and-photos](https://www.epa.gov/east-palestine-oh-train-derailment/videos-and-photos)



## ABOUT THIS PUBLICATION

This weekly newsletter is being developed through a joint effort of local, state, federal agencies, and community organizations. If you would like more information about topics discussed, please visit [www.epa.gov/east-palestine-oh-train-derailment](https://www.epa.gov/east-palestine-oh-train-derailment) or call EPA’s Information Line at **330-775-6517**



**SCAN ME** for a list of additional resources

EPA Welcome Center - EPTD  
25 N. Market St  
East Palestine, OH 44413