

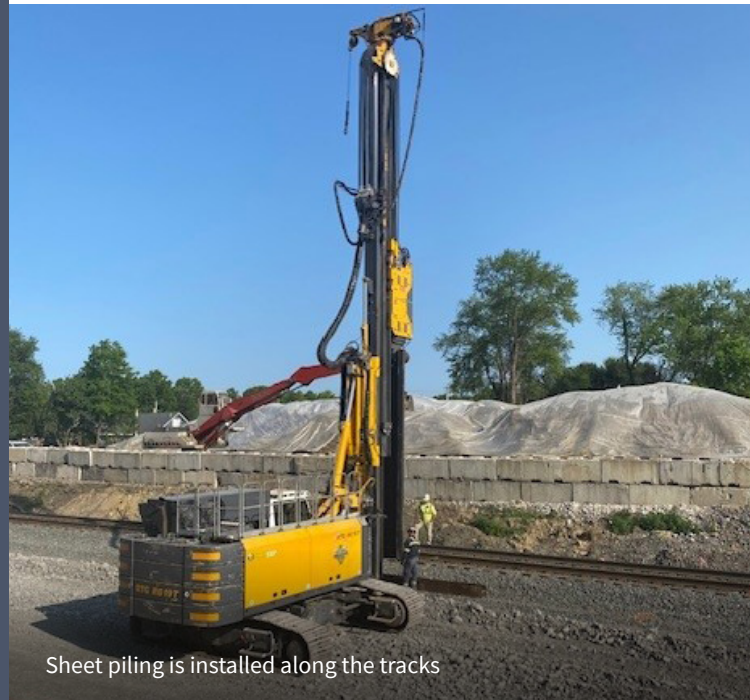
East Palestine

TRAIN DERAILMENT RESPONSE

Serving East Palestine, Negley, Darlington
and surrounding communities

NEWSLETTER

June 6, 2023



Sheet piling is installed along the tracks

PROGRESS MADE

Excavation is Underway at North Pleasant Drive

North Pleasant Drive will be closed during the week of June 5 to excavate under the railroad tracks at the road crossing. The road will likely be closed for several days, and traffic will be rerouted to James Street during this closure. During the excavation, EPA will oversee air monitoring and other controls to ensure the safety of all residents. All excavation areas will be secured and covered during the process. Soil will be sampled to ensure contaminated material is removed and cleared areas will be backfilled.

Sheet Piling is Installed Around Areas of the Track

Sheet piling is being driven into the ground along the train tracks so the remaining contaminated soil between the tracks can be excavated safely, without affecting the integrity of the railway. The installation of sheet piling at the site will continue for the next few weeks while work is ongoing.

Vapor Suppressants are Used to Control Odors

When soil waste is loaded or staged there may be increased vapors. Continuous air monitoring is done to ensure the air remains safe. Also, a vapor suppressant foam is used on active piles to reduce odors. Some chemicals of concern, such as butyl acrylate, have a low odor threshold and can be smelled below levels of concern.



Trucks carrying hazardous waste can be identified by their placards



EPA's booth at the Darlington Days Festival

THE WEEK AHEAD

AT THE SITE

- North Pleasant Drive will be closed Monday through Friday during the week of June 5, to excavate under the railroad tracks at the road crossing.
- Excavation will continue in areas that require additional digging. Areas are backfilled after confirming that contamination has been removed.
- Truck traffic continues near the derailment site. Waste shipments will continue.
- Taggart Street remains closed to the public.

IN THE GREATER COMMUNITY

- EPA's Welcome Center at 25 North Market Street in East Palestine remains open to the public Monday through Friday from 8 a.m. to 8 p.m. and Saturday from 10 a.m. to 4 p.m. (closed on Sundays).
- Air monitoring continues at 23 locations around town.
- Cleaning of Sulphur Run will resume the week of June 5. Stream assessments of Sulphur Run and Leslie Run are being evaluated to determine the next steps to remove contamination.

COMMUNITY CORNER

The Threshold Residential Services community sensory garden recently opened on the south side of Taggart Street. This garden is a safe, relaxing, and interactive space open to the whole community. Designed to engage and elevate the senses, this garden enhances the lives of people with developmental disabilities and their families. By immersing yourself and your senses in gardening, you will activate different areas of the brain while learning about the environment. This beautiful and interactive garden will continue to grow and eventually bloom, so keep an eye out!



Threshold Residential Services sensory garden near Taggart St.

DID YOU KNOW?

The hellbender salamander is the largest amphibian in North America and is found in Pennsylvania, Ohio, and West Virginia. The hellbender is the state amphibian of Pennsylvania and is an endangered species in Ohio. Like Peter Pan, a hellbender never wants to grow up. While other salamanders' larvae complete metamorphosis and move onto land, hellbenders go through a partial metamorphosis. At 18 months, they lose their gills but stay in water, breathing through their wrinkly skin. For food, hellbenders eat local crayfish and are always happy to enjoy a snack that travels to them. While much is not known about the hellbender, we do know that they can live for over thirty years.



Ohio EPA recently found an endangered hellbender salamander



CORRECTION

Last week's newsletter mentioned that water trucks wetting roads were getting water from a hydrant on Taggart Street. In fact, the water trucks are getting their water from a hydrant on Park Ave at the City's garage.

TOP 3 QUESTIONS OF THE WEEK

01 What is the research workshop that National Institutes of Health (NIH) and the national academies are planning in East Palestine and the greater community?

NIH is putting plans in place to work with the National Academies of Sciences, Engineering, and Medicine to hold a workshop. The purpose of the workshop is to explore potential research priorities to understand the short- and long-term health impacts of the Norfolk Southern Train Derailment. The workshop will be inclusive of the communities' input and concerns.

02 What are the terms used to describe the length of exposure to substances?

Acute exposure is any contact with a substance that occurs once or for up to 14 days. Intermediate exposure is contact occurring for more than 14 days but less than one year. Chronic exposure is contact occurring for longer than one year.

03 What work happens after contamination under and between the train tracks is removed?

After track work is complete, additional cleanup and assessments will continue. This includes shipping solid and liquid wastes off-site, excavating in areas where rail cars were staged and scrapped, and sampling and monitoring groundwater, soil, surface water, and sediment.

SITE STATUS CHECK As of June 2



NORTH TRACK:
Estimated 90% complete
SOUTH TRACK:
Tracks operational



LESLIE RUN: Stream assessments are ongoing to determine next steps
SULPHUR RUN:
Cleaning will resume the week of June 5

20 million
est. gallons of wastewater shipped offsite



57,231
est. tons of solid waste shipped offsite



SAFETY MINUTE PREPARE FOR THE SUMMER HEAT

Protect yourself and others by knowing the difference between **HEAT EXHAUSTION** and **HEAT STROKE**

HEAT EXHAUSTION

- Headaches
- Dizzy or fainting
- Heavy sweating
- Cold, pale & clammy skin
- Nausea or vomiting
- Fast, weak pulse
- Weakness or muscle cramps
- Excessive thirst

WHAT TO DO

- Hydrate with water or a sports drink
- Move to a cooler, air-conditioned place
- Lie down
- Remove tight fitting clothing or extra layers
- Take a cool shower or use a cold compress
- Act quickly, untreated heat exhaustion can progress to heat stroke

HEAT STROKE

- Headache
- Confusion
- No sweating/dry skin
- Nausea or vomiting
- Rapid heart rate
- High body temperature (103 F or higher)

WHAT TO DO

- Move the person to a cooler place
- Use a cold compress to reduce body temperature
- Call 911, this is a medical emergency



(330) 775-6517



R5_eastpalestine@epa.gov



epa.gov/east-palestine-oh-train-derailment

UPCOMING COMMUNITY EVENTS

On June 14, EPA will be at the East Palestine Memorial Library for their Meet the Helpers event. This is an opportunity to meet and interact with responders and see their vehicles up close. EPA responders will be at the event with our Trace Atmospheric Gas Analyzer (TAGA) bus.

To watch recordings of earlier informational sessions, check out the “Videos and Photos” section of EPA’s website: www.epa.gov/east-palestine-oh-train-derailment/videos-and-photos



ABOUT THIS PUBLICATION

This weekly newsletter is being developed through a joint effort of local, state, federal agencies, and community organizations. If you would like more information about topics discussed, please visit www.epa.gov/east-palestine-oh-train-derailment or call EPA’s Information Line at **330-775-6517**



SCAN ME for a list of additional resources

EPA Welcome Center - EPTD
25 N. Market St
East Palestine, OH 44413