




**Community-Based Research for Effective Programs,
Policies, and Decisions to Mitigate Cumulative Health
Impacts and Environmental Health Disparities in
Underserved Communities**

Informational Webinar for Applicants

EPA STAR RFA

Tuesday, July 18, 2023

- Review application Information for the EPA STAR RFA:
Community-Based Research for Effective Programs, Policies, and Decisions to Mitigate Cumulative Health Impacts and Environmental Health Disparities in Underserved Communities
- Provide guidance for eligibility, submission, technical aspects of application process
- Answer questions about the application process 

Webinar Ground Rules



- During the presentations, you may type your questions in the comment box.
- Questions will be addressed after the presentation.
- No specific research project or idea can be discussed but clarifying questions regarding what is written in the request for applications (RFA) announcement may be answered.
- These slides and Q&A transcript will be posted on the RFA webpage.
- Please keep yourself muted during the presentation.



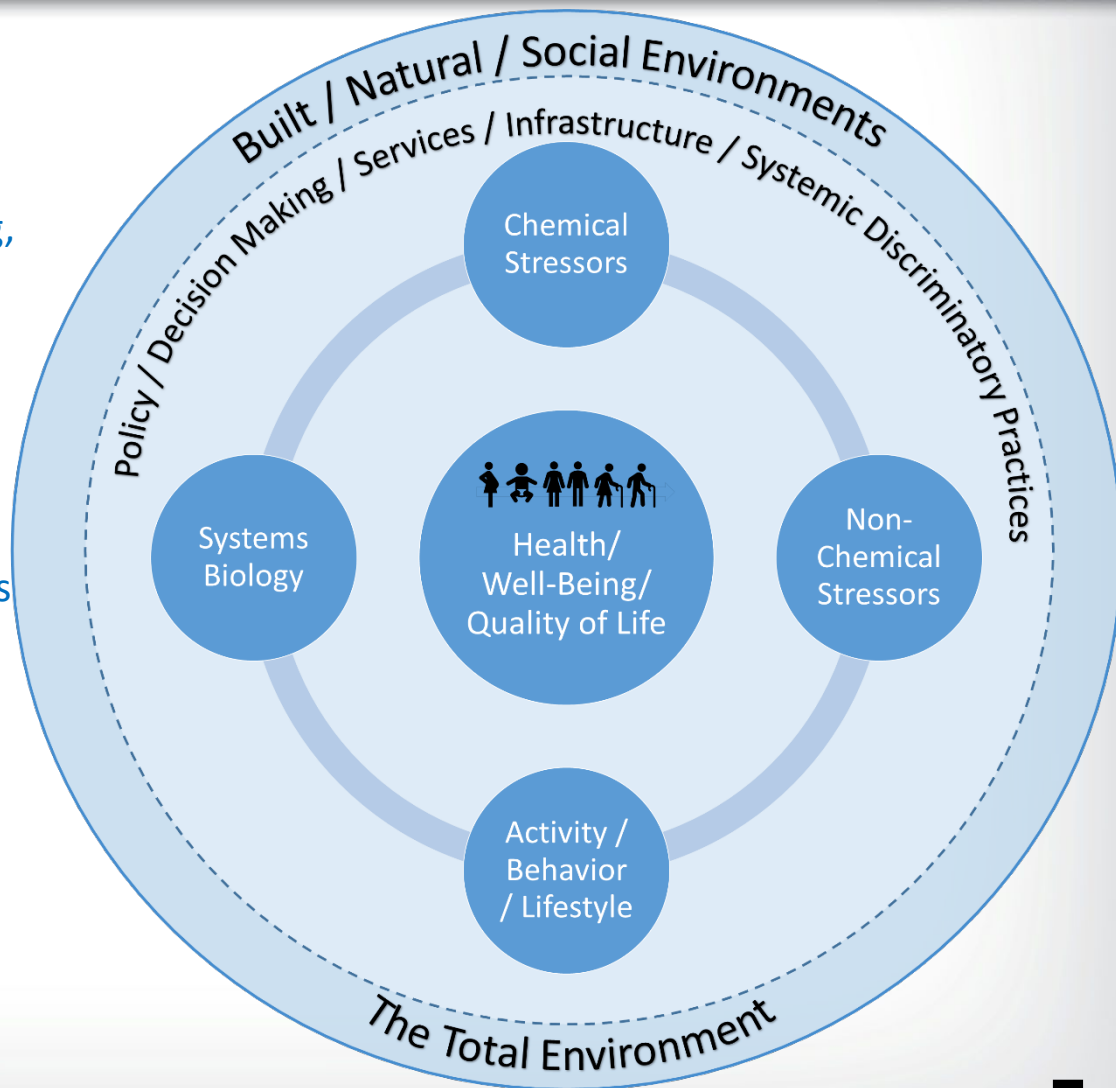


RFA & Award Information

- RFA will close on August 31, 2023 at 11:59:59 pm Eastern Time
- Estimated Number of Awards: 5
 - EPA anticipates at least 1 award will be given to a new awardee
- Anticipated Funding Amount: \$10M for all awards.
- Cost sharing is not needed
- Proposed budget must not exceed \$2,000,000.

Please read the RFA very carefully, all necessary information is provided

- **Cumulative Impacts** - the totality of exposures to combinations of chemical and non-chemical stressors and their effects on health, well-being, and quality of life outcomes
- Characterize the potential state of vulnerability or resilience of a community
- Include contemporary exposures to multiple stressors as well as exposures throughout a person's lifetime
- Influenced by the distribution of stressors and encompass both direct and indirect effects to people through impacts on resources and the environment
- Can be considered in the context of individuals, geographically defined communities, or definable population groups





Research Areas

The research should address both areas listed below. Research results must identify practical, real-world solution(s) which would lead to improved or new community-level initiatives, state and local policies, and commercial/private incentives for reducing exposures to chemical and non-chemical stressors, mitigating cumulative impacts, and building adaptive capacity with particular attention paid to underserved communities.

1. Propose cutting-edge, multidisciplinary research to improve health, well-being, and quality of life outcomes by assessing and addressing cumulative impacts resulting from combinations of chemical and non-chemical stressors in underserved communities. Investigate how the scientific information can be used to develop effective cumulative impact assessment approaches and/or methods. Identification of specific health outcomes and key stressors (both chemical and non-chemical) are required.
2. Propose research to investigate how cumulative impact assessment approaches and/or methods can be used to shape better informed practical programs, policies, and decisions to eliminate environmental health disparities.



Expected Outputs

- **The expected outputs** from this research will be novel and comprehensive scientific information, publications, data, and knowledge about how exposures to multiple pollutants and other environmental stressors in underserved communities are quantitatively and/or qualitatively linked to specific health outcomes.
- Research results will also include important information on non-chemical environmental stressors and modifying factors that significantly affect vulnerability to both exposure and health effects among underserved communities within the United States.
- The desired outputs should result in more accurate cumulative health impact assessments leading to more effective, practical, and efficient reduction, mitigation, and prevention measures at tribal, state, local, and community levels.



Expected Outcomes

The expected outcomes include:

- Reductions in environmental health disparities in underserved communities in the United States;
- Reductions in adverse impacts to health and well-being from exposure to chemical and non-chemical environmental stressors; and
- Improved prevention and/or mitigation policies and programs to improve the health and well-being of underserved communities.
- The proposed research should improve decision-making to achieve environmental justice and health equity in underserved communities across the United States.



Eligibility Information

Eligible to Apply:

Public and private nonprofit institutions/organizations

Public and private institutions of higher education

Hospitals located in the U.S.

State and local governments

Federally Recognized Indian Tribal Governments

Foreign collaborators, data collection or use are OK

International Budget needs to be justified, reviewed, and approved



Eligibility Information (Cont'd)

- Entities that are **NOT** eligible:
 - Profit-making companies
 - Foreign governments
 - International organizations
 - Federally-Funded Research and Development Centers (FFRDCs)
 - Federal agencies
 - Individuals
- Note that eligible entities can partner with some ineligible entities under EPA's Subaward Policy, which can be found at <https://www.epa.gov/grants/grants-policy-issuance-gpi-16-01-epa-subaward-policy-epa-assistance-agreement-recipients>.
- For profit companies may be consultants
 - For profit companies are NOT eligible and may NOT be subawardees
 - Consultants are not to be considered key personnel on a grant application
 - Contracts/Consultants are subject to competitive procurement requirements (see Section IV.C.5.iv.f)



Eligibility Information (Cont'd)

- Applications must be submitted via [Grants.gov](https://www.grants.gov)
 - If you cannot access [Grants.gov](https://www.grants.gov), see <https://www.epa.gov/grants/exceptions-grantsgov-submission-requirement>.
 - You must have [SAM.gov](https://www.sam.gov) registration ACTIVE in order to apply via [Grants.gov](https://www.grants.gov).
- Applications that exceed federal funding or performance period time limits will not be reviewed.
 - Period of performance should be within 3 years, start date is not the focus.
 - Research usually starts nine to twelve months after the close of the RFA.
- Applications must include a Community Engagement Plan (see Section IV.C.5.iii.e) that demonstrates collaboration/engagement with partner(s)/community(ies) in the design and execution of the proposed research or how the applicant will be able to effectively perform and complete the project without such collaboration/engagement.
- Applications from ineligible organizations, or that are somehow not substantially compliant, will not be reviewed.
- Organizations and PIs may submit more than one application, as long as they are substantially different.



Application Materials

- Details are provided in **Section IV. “Application and Submission Information”**
- To apply under this solicitation, use the application package available at via [Grants.gov](https://www.grants.gov).
 - For further submission information see: **RFA Section IV.F. “Submission Instructions and other Submission Requirements”**
- Note: All necessary forms are included in the electronic application package, with the exception of the current and pending support form, available at: [**Research Funding Opportunities: How to Apply and Required Forms**](#)

Make sure to include the current and pending support form in your Grants.gov submission

Application Content

Component	RFA Section	Page Limit
‡Standard Form 424	IV.C.1	N/A
‡Key Contacts, EPA Form 5700-54; Additional Key Contacts, if appropriate	IV.C.2	N/A
‡EPA Form 4700-4, Preward Compliance Review Report	IV.C.3	N/A
‡Budget (Standard Form 424A, Section B)	IV.C.4	N/A
Table of Content	IV.C.5.i	none
Abstract	IV.C.5.ii	1
Research Plan	IV.C.5.iii.a	20
Quality Assurance Statement (QAS)	IV.C.5.iii.b	3
Human Subjects Research Statement (HSRS)	IV.C.5.iii.c	4
Scientific Data Management Plan (SDMP)	IV.C.5.iii.d	2
Community Engagement Plan	IV.C.5.iii.e	5
References	IV.C.5.iii.f	none
Budget Justification	IV.C.5.iv	3
Resume	IV.C.5.v	2 per investigator/senior personnel
‡Current and Pending Support	IV.C.5.vi	N/A
Letters of Intent/Letters of Support	IV.C.5.vii.a	1 per letter

‡Forms are available at <https://www.grants.gov> and/or <https://www.epa.gov/research-grants/research-funding-opportunities-how-apply-and-required-forms>



Electronic Submissions

- Details are provided in Section IV.F. “Submission Instructions and Other Submission Requirements.”
- If you have trouble with Grants.gov, perform the following steps **before** the close of the RFA (Section IV.F.5.):
 - Contact Grants.gov Support Center before the application deadline date.
 - Document the Grants.gov ticket/case number.
 - Send an email with the FON (EPA-G2023-STAR-G1) in the subject line to electronic-grant-submissions@epa.gov before the application deadline time and date and must include the following:
 - i. Grants.gov ticket/case number(s)
 - ii. Description of the issue
 - iii. The entire application package in PDF format.
- You may resubmit an application before the deadline, but changes are not permitted after an RFA closes. If we see duplicates of the same application, we will process the most recent one.
- If you are experiencing a natural disaster and cannot submit on time, please contact us immediately.
- Letters of support or intent from EPA employees are prohibited, and we will remove such letters if we find them.

Please refer to the following RFA sections for additional information:

IV. Application And Submission Information

- Required application package materials including:
 - EPA Human Subjects Research Statement (HSRS)
 - Scientific Data Management Plan (SDMP)
 - Community Engagement Plan (CEP)

V. Application Review Information

- Peer Review Criteria
- Relevancy Review Criteria



Application Review Information

- Peer Review Criteria (see Section V.A)

1. Research Merit
2. Responsiveness
3. Project Management
4. Environmental Justice
5. Community Engagement Plan
6. Other Factors

- Relevancy Review Criteria (see Section V.B)

1. The degree to which the proposed science/research is relevant to EPA's priorities as described in this solicitation and Goal 2: Take Decisive Action to Advance Environmental Justice and Civil Rights, Objective 2.1: Promote Environmental Justice and Civil Rights at the Federal, Tribal, State, and Local Levels, of EPA's FY2022-2026 Strategic Plan.
2. The degree to which results (i.e., outputs/outcomes) of the research have broad application or affect large segments of society.
3. The degree to which the research is designed to produce data and methods that can immediately and/or with little to no translation be utilized by the public, states, and tribes to better assess or manage environmental problems.

- See **Section V** for more detail on the above criteria and other review components

- **Technical Contact:** Flora Barrow, Project Officer (barrow.flora@epa.gov); phone: (202)564-4377 
- **Eligibility Contact:** Ron Josephson, Eligibility Officer (josephson.ron@epa.gov); phone: (202)564-7823
- **Electronic Submissions:** electronic-grant-submissions@epa.gov 
- **Science (Peer) Review Contact:** Aaron Wishnuff, Science Review Officer, (Wishnuff.aaron@epa.gov); phone : (202)564-2055

Thank you!