

Table 1  
Community Continuous Air Monitoring Results  
East Palestine Derailment Site  
East Palestine, Columbiana County, Ohio

**Monitoring Period: 07/03/2023 00:00 through 07/04/2023 10:24**

Air Monitoring Instrument: Serial Number	Analyte	Screening Level <sup>1</sup>	Screening Level Exceeded?	8-hour Period Concentration Range	Average of All 8-hour Periods
<b>8533183117</b>	PM <sub>2.5</sub> (mg/m <sup>3</sup> )	0.035 (mg/m <sup>3</sup> )	No	0.013 to 0.023	0.018
	PM <sub>10</sub> (mg/m <sup>3</sup> )	0.070 (mg/m <sup>3</sup> )	No	0.015 to 0.027	0.021
<b>8533230702</b>	PM <sub>2.5</sub> (mg/m <sup>3</sup> )	0.035 (mg/m <sup>3</sup> )	No	0.012 to 0.022	0.017
	PM <sub>10</sub> (mg/m <sup>3</sup> )	0.070 (mg/m <sup>3</sup> )	No	0.020 to 0.034	0.027
<b>8533230504</b>	PM <sub>2.5</sub> (mg/m <sup>3</sup> )	0.035 (mg/m <sup>3</sup> )	No	0.017 to 0.028	0.024
	PM <sub>10</sub> (mg/m <sup>3</sup> )	0.070 (mg/m <sup>3</sup> )	No	0.021 to 0.033	0.029
<b>W01A00002133</b>	VOC (ppm)	0.5 (ppm)	No	0.00 to 0.01	0.00
	LEL (%)	>5%	No	0.00 to 0.00	0.00
<b>W01B00002170</b>	VOC (ppm)	0.5 (ppm)	No	0.00 to 0.00	0.00
<b>W01B00002181</b>	VOC (ppm)	0.5 (ppm)	No	0.00 to 0.00	0.00
<b>W01B00002206</b>	VOC (ppm)	0.5 (ppm)	No	0.00 to 0.00	0.00
<b>W01B00002208</b>	VOC (ppm)	0.5 (ppm)	No	0.00 to 0.00	0.00
<b>W01B00002209</b>	VOC (ppm)	0.5 (ppm)	No	0.00 to 0.00	0.00
	LEL (%)	>5%	No	0.00 to 0.00	0.00
<b>W01B00002220</b>	VOC (ppm)	0.5 (ppm)	No	0.00 to 0.00	0.00
	LEL (%)	>5%	No	0.00 to 0.00	0.00
<b>W01B00002221</b>	VOC (ppm)	0.5 (ppm)	No	0.00 to 0.00	0.00
<b>W01B00002222</b>	VOC (ppm)	0.5 (ppm)	No	0.00 to 0.00	0.00

**Notes:**

<sup>1</sup> Site-Specific Screening Levels stated in the Tetra Tech Air Monitoring and Sampling Plan. Screening levels were modified on March 16, 2023 to reflect updated operation procedures on when to apply mitigation methods to reduce dust. Action levels set by health departments have not changed.

Air monitoring measurements have been averaged over a 8-hour time period and summarized above.

Air monitoring is not performed during inclement weather conditions/rain and thunderstorms.

**Abbreviations:**

mg/m<sup>3</sup> - milligrams per meter cubed

PM<sub>2.5</sub> - Particulate Matter, diameter 2.5 micrometers and smaller

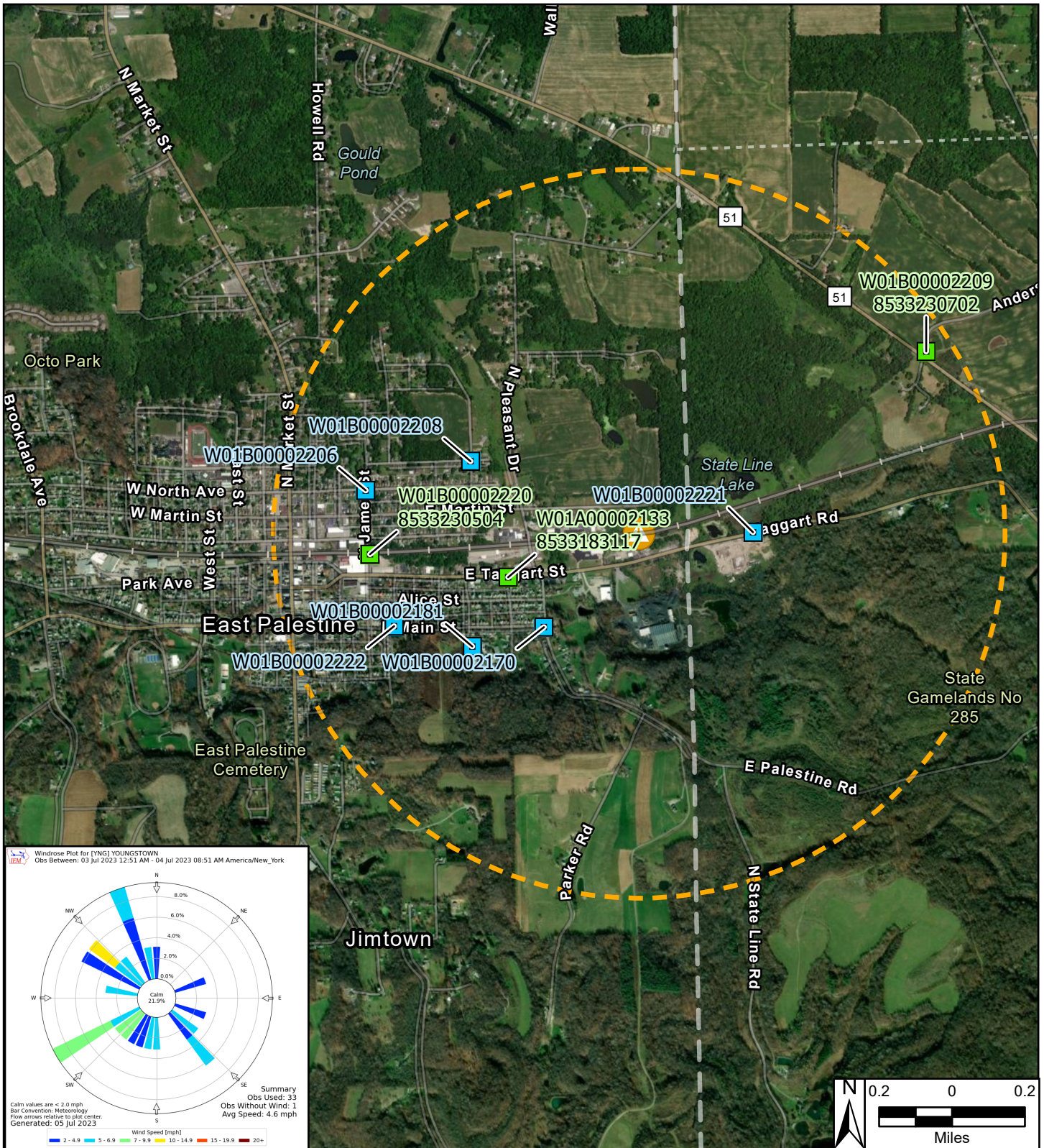
PM<sub>10</sub> - Particulate Matter, diameter 10 micrometers and smaller

ppm - Parts per million

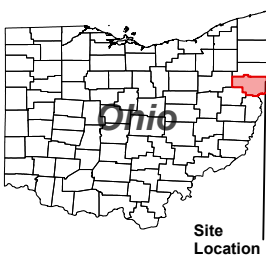
S/N - Serial number

VOC - Volatile organic compound

We are in the process of ensuring this document is accessible to all audiences. If you need assistance accessing this document, or any materials on the EPA East Palestine, Ohio emergency response webpages, please contact the Region 5 Public Information Officer on-call [r5\\_eastpalestine@epa.gov](mailto:r5_eastpalestine@epa.gov)



#### Reference Map



#### Legend

- Continuous Air Monitoring Locations with DustTrak
- Continuous Air Monitoring Locations
- One Mile Radius
- ▲ Derailment Location

East Palestine Derailment ER Site  
 East Palestine, Columbiana County, OH 44413

### Figure 1 Continuous Air Monitoring Community Stations



Prepared For: EPA

Prepared By: Tetra Tech Inc.