

Table 1  
Community Continuous Air Monitoring Results  
East Palestine Derailment Site  
East Palestine, Columbiana County, Ohio

**Monitoring Period: 07/20/2023 00:00 through 07/21/2023 09:40**

Air Monitoring Instrument: Serial Number	Analyte	Screening Level <sup>1</sup>	Screening Level Exceeded?	8-hour Period Concentration Range	Average of All 8-hour Periods
8533230504	PM <sub>2.5</sub> (mg/m <sup>3</sup> )	0.035 (mg/m <sup>3</sup> )	Yes <sup>2</sup>	0.023 to 0.067	0.031
	PM <sub>10</sub> (mg/m <sup>3</sup> )	0.070 (mg/m <sup>3</sup> )	Yes <sup>2</sup>	0.024 to 0.072	0.034
8533230702	PM <sub>2.5</sub> (mg/m <sup>3</sup> )	0.035 (mg/m <sup>3</sup> )	Yes <sup>2</sup>	0.000 to 0.059	0.028
	PM <sub>10</sub> (mg/m <sup>3</sup> )	0.070 (mg/m <sup>3</sup> )	Yes <sup>2</sup>	0.000 to 0.152	0.035
8533183117	PM <sub>2.5</sub> (mg/m <sup>3</sup> )	0.035 (mg/m <sup>3</sup> )	Yes <sup>2</sup>	0.000 to 0.038	0.034
	PM <sub>10</sub> (mg/m <sup>3</sup> )	0.070 (mg/m <sup>3</sup> )	No	0.000 to 0.039	0.035
W01A00002133	VOC (ppm)	0.5 (ppm)	No	0.00 to 0.00	0.00
	LEL (%)	>5%	No	0.00 to 0.00	0.00
W01B00002170	VOC (ppm)	0.5 (ppm)	No	0.00 to 0.00	0.00
W01B00002181	VOC (ppm)	0.5 (ppm)	No	0.00 to 0.04	0.01
W01B00002206	VOC (ppm)	0.5 (ppm)	No	0.00 to 0.00	0.00
W01B00002208	VOC (ppm)	0.5 (ppm)	No	0.00 to 0.00	0.35
W01B00002209	VOC (ppm)	0.5 (ppm)	No	0.00 to 0.14	0.07
	LEL (%)	>5%	No	0.00 to 0.00	0.00
W01B00002220	VOC (ppm)	0.5 (ppm)	No	0.00 to 0.02	0.00
	LEL (%)	>5%	No	0.00 to 0.00	0.00
W01B00002221	VOC (ppm)	0.5 (ppm)	No	0.00 to 0.00	0.00
W01B00002222	VOC (ppm)	0.5 (ppm)	No	0.00 to 0.00	0.00

**Notes:**

<sup>1</sup> Site-Specific Screening Levels stated in the Tetra Tech Air Monitoring and Sampling Plan. Screening levels were modified on March 16, 2023 to reflect updated operation procedures on when to apply mitigation methods to reduce dust. Action levels set by health departments have not changed.

<sup>2</sup> Vehicle traffic observed during monitoring period near monitoring instrument.

Air monitoring measurements have been averaged over a 8-hour time period and summarized above.

Air monitoring is not performed during inclement weather conditions/rain and thunderstorms.

**Abbreviations:**

mg/m<sup>3</sup> - milligrams per meter cubed

PM<sub>2.5</sub> - Particulate Matter, diameter 2.5 micrometers and smaller

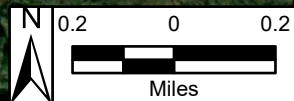
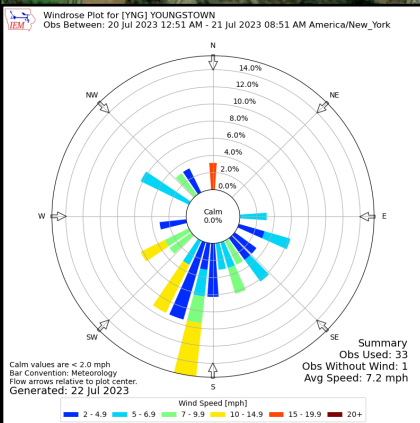
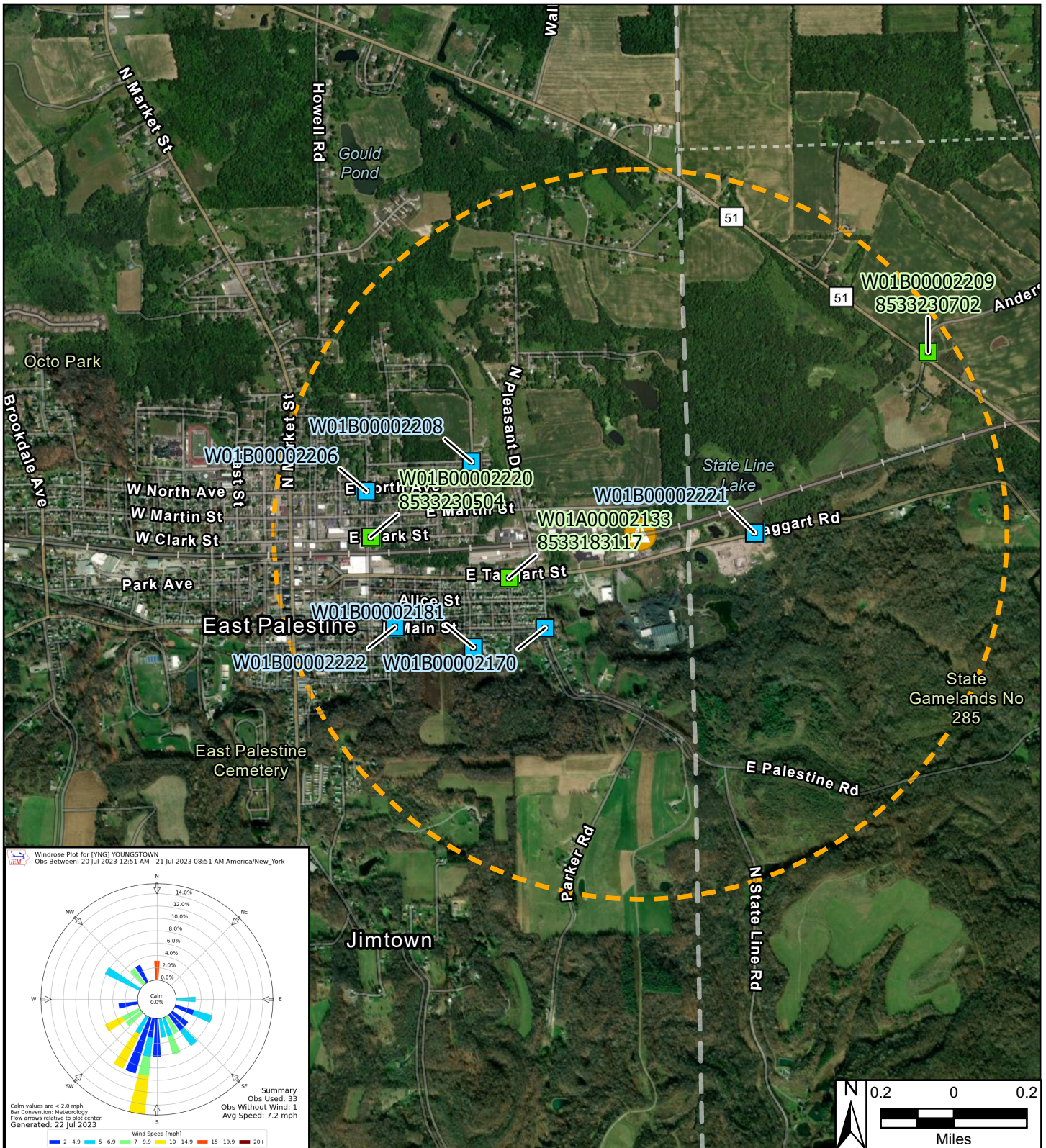
PM<sub>10</sub> - Particulate Matter, diameter 10 micrometers and smaller

ppm - Parts per million

S/N - Serial number

VOC - Volatile organic compound

We are in the process of ensuring this document is accessible to all audiences. If you need assistance accessing this document, or any materials on the EPA East Palestine, Ohio emergency response webpages, please contact the Region 5 Public Information Officer on-call [r5\\_eastpalestine@epa.gov](mailto:r5_eastpalestine@epa.gov)



**Reference Map**



**Legend**

- Continuous Air Monitoring Locations with DustTrak
- Continuous Air Monitoring Locations
- One Mile Radius
- ▲ Derailment Location

East Palestine Derailment ER Site  
 East Palestine, Columbiana County, OH 44413

**Figure 1**  
**Continuous Air Monitoring Community Stations**



Prepared For: EPA

Prepared By: Tetra Tech Inc.