



Rural  
Community  
Assistance  
Partnership

---

# RCAP Regionalization Resources and Case Studies

Sarah Buck  
Chief Programs Officer  
RCAP

---



# Rural Community Assistance Partnership



RCAP National Office



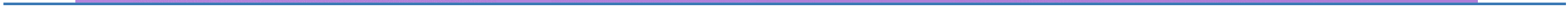
COMMUNITIES  
Unlimited

# Agenda

- Regionalization Spectrum Review Video
- Role of RCAP
- Case Studies
  - Lycoming
  - Lower Rio Grande
- RCAP Resources
- Questions

# Regionalization Spectrum Video

Check out this video on the basics to easily explain the **different types of regionalization...**



# Role of RCAP

# RCAP plays four major roles:



- Technical Assistance Provider
  - Neutral third-party facilitator
  - Moderator/Negotiator—often includes conflict resolution!
  - Convener and Bridge Builder between funders, primacy, communities etc.
-

# Case Studies



# Lycoming County Water and Sewer Authority, PA



- Lycoming County, Pennsylvania is in the north central section of the state; the county is predominately rural and had numerous small public water and wastewater systems serving the small villages and towns throughout the region.
  - Many of the small communities were failing to invest in infrastructure, struggling with compliance, and experiencing high water loss in their distribution systems.
-

# Lycoming County Water and Sewer Authority, PA



- The county-wide authority was formed in 1989 by the Commissioners of Lycoming County as they recognized many communities were challenged with more complex regulations, rising management costs, lack of proper asset management, and no plans for long-term sustainability.
  - The Authority still operates today as an independent authority serving systems throughout the county.
  - The Authority is guided by a nine-member board as an independently operating authority funded only by user fees and billed services.
-

# Lycoming County Water and Sewer Authority, PA



- The Authority's first project was to build a regional sewer plant that served a few municipalities. Over the years, the Authority has continued to serve even more communities, offering varied services needed throughout the county.
  - Currently, the Authority serves 10 water and wastewater systems in 12 municipalities and reaches 8,500 customers.
  - The Authority provides varying levels of service to the communities involved from billing, operations and maintenance, and leak detection to fully owning and operating systems.
-

# Lycoming County Water and Sewer Authority, PA



- Some of the Authority's goals are to develop cost-effective solutions and to build partnerships and ultimately infrastructure, and one of the keys to their success is to honor communities' characters, desires, and requests.
  - This is an example of a mix of full consolidation, shared governance, and contract services—different systems in the county and the Authority have the flexibility to decide which form of partnership is best for them at this point which presumably can be readdressed and changed later if desired.
  - Also, shows that a regional entity can potentially serve both water and wastewater systems/customers (not need to be siloed)
-

# Lower Rio Grande, NM



- <https://www.rcac.org/videos/lower-rio-grande-public-water-works-authority/>

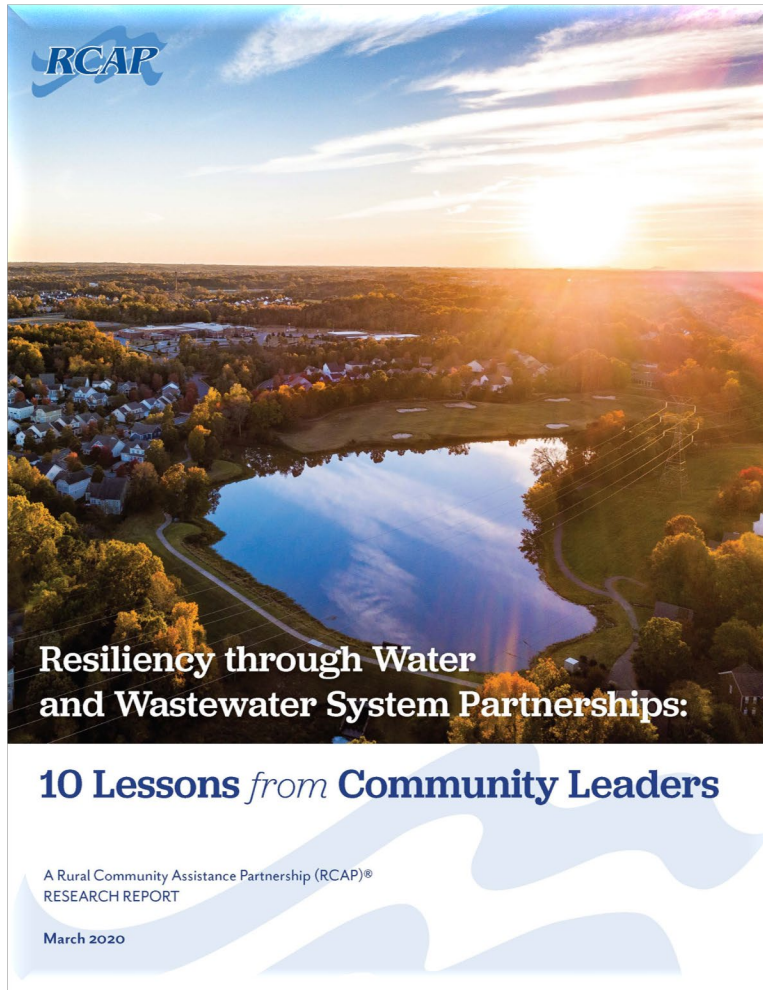
# RCAP Resources

# RCAP Resources



- [New Regionalization Guide for TAPs and Communities](#)
- Managerial and Financial Hub:  
<https://www.rcap.org/managerialfinancialhub/regionalization-partnerships/>
- [Regionalization Website](#)
- [Regionalization One Pager](#)
- Self-paced eLearning on regionalization, resiliency and emergency response: <https://rcap.talentlms.com/catalog/info/id:223>

# RCAP Regionalization research



Available at: <https://www.rcap.org/special-initiatives/regionalization/>

<https://rcap.org/wp-content/uploads/2021/09/Appendix-A-State-Regionalization-Policies-DW-and-WW-1.xlsx>



# 10 Lessons Learned



BEGINNING OF THE PROCESS / BUILDING BLOCKS

- 1** Determine whether a partnership may be right for your community
- 2** Find out what resources are available and build your team
- 3** Commit to transparency from the start
- 4** Commit to a willingness to listen, be respectful and find mutual benefit
- 5** Recognize the importance of thinking through and reaching agreement on governance
- 6** Keep a patient mindset, and know that this is a long-term discussion focused on sustainability

ONCE IN PROCESS

- 7** Be realistic about long-term costs and capacity to keep up any new infrastructure
- 8** Help system leadership and boards develop an understanding of their roles and responsibilities
- 9** Keep your goal in sight, but be open to possibilities
- 10** Ensure building and earning trust is prioritized throughout the process

THROUGHOUT

# Poll Question Number 4

# Questions?

# Thank you!!

Sarah Buck  
Chief Programs Officer

[sbuck@rcap.org](mailto:sbuck@rcap.org)

978-894-4123

# Poll Question 2

**Partnerships/regionalization?**



# Poll Question 3

**Partnership participation?**





# Water System Partnerships:

*Introducing Water System Partnerships,  
TMF Capacity,  
and Tools to Address Water System Challenges*

**Office of Water, U.S. EPA**

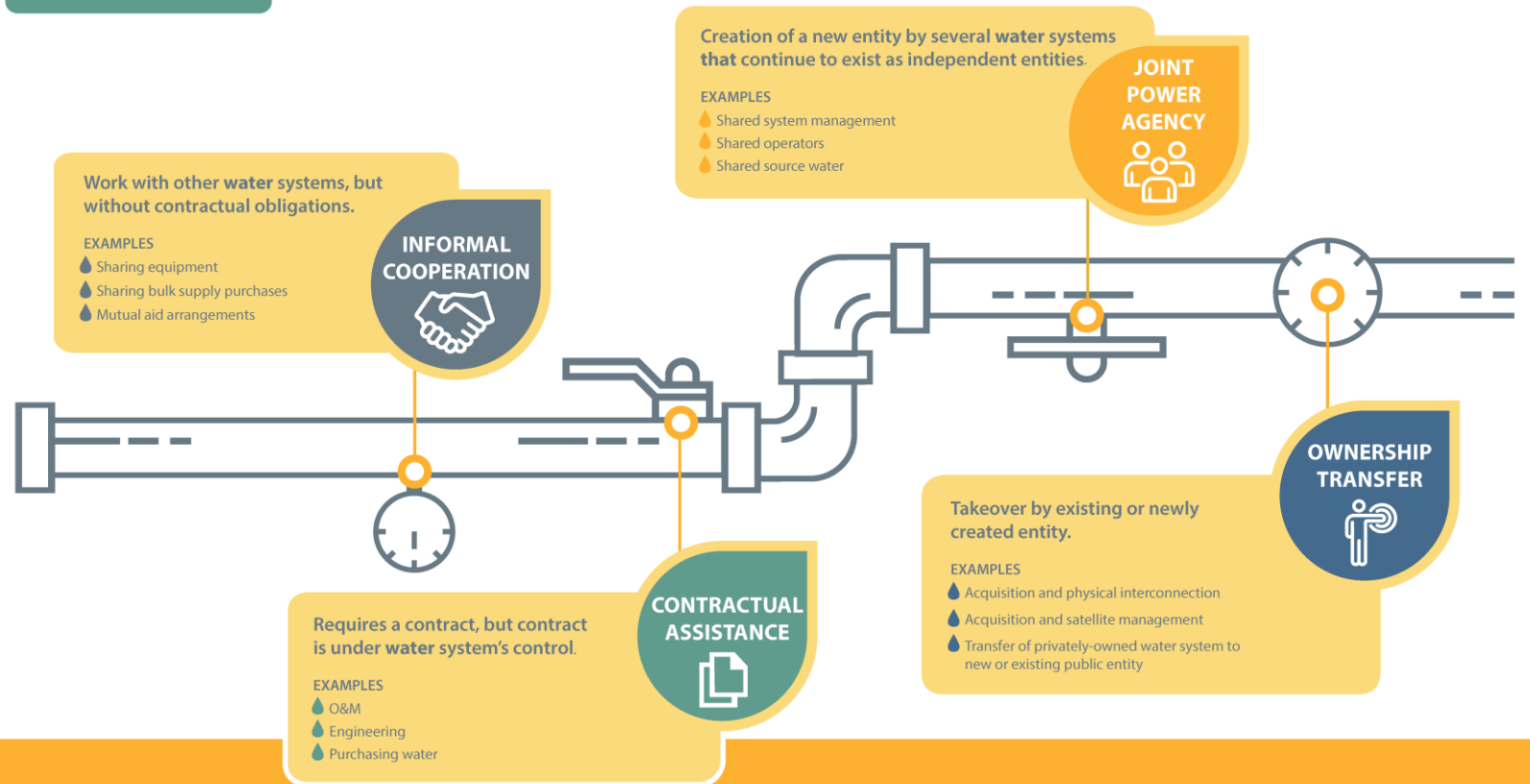
# What are Water System Partnerships?

## Types of Partnerships

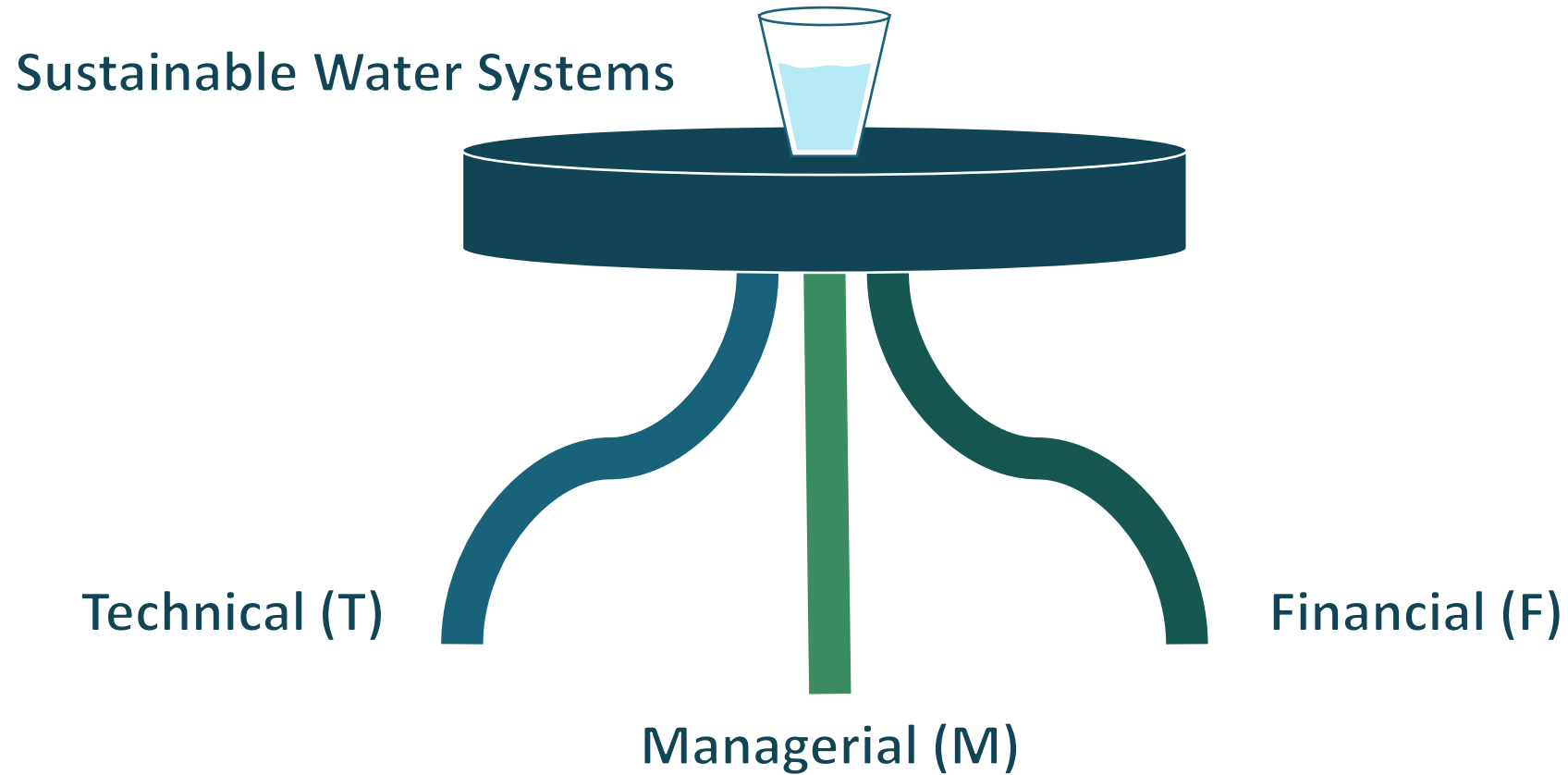


Water system partnerships encompass a range of **opportunities** for water systems to work together in order to sustainably provide water services.

## Increasing Transfer of Responsibility



# What is TMF Capacity?





# Partnerships Address TMF Capacity

## Technical

- Inadequate or aging infrastructure
- Limited/poor source quality/quantity
- Lack of certified operator

## Managerial

- Limited part time management attention
- Lack of expertise in long-term system planning or operations

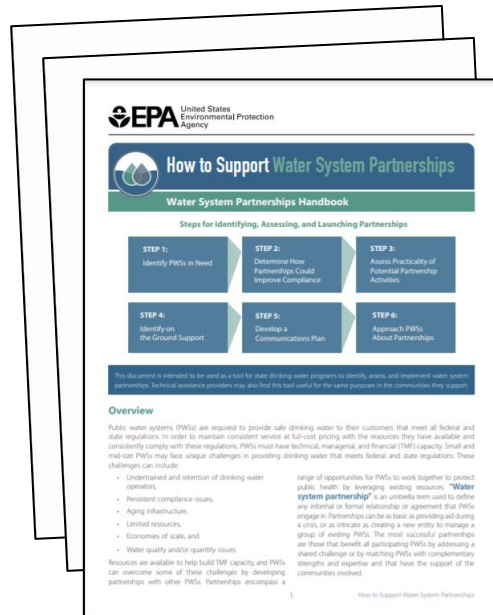
## Financial

- Lack economies of scale
- History of water rates that are too low
- Limited knowledge of financing options



# EPA Tools

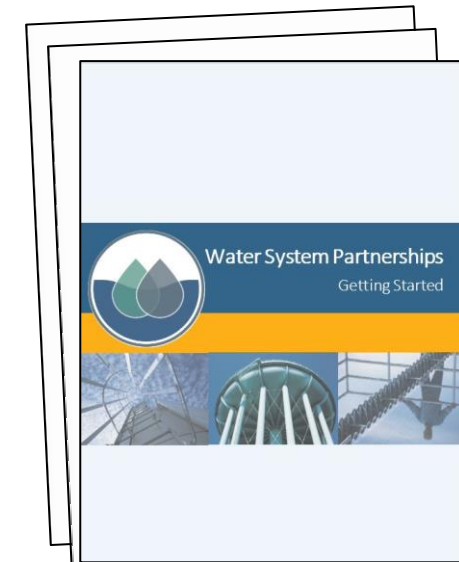
## Water System Partnerships Handbook



## Water System Partnerships Training Toolbox



## Water System Partnerships Getting Started Guide

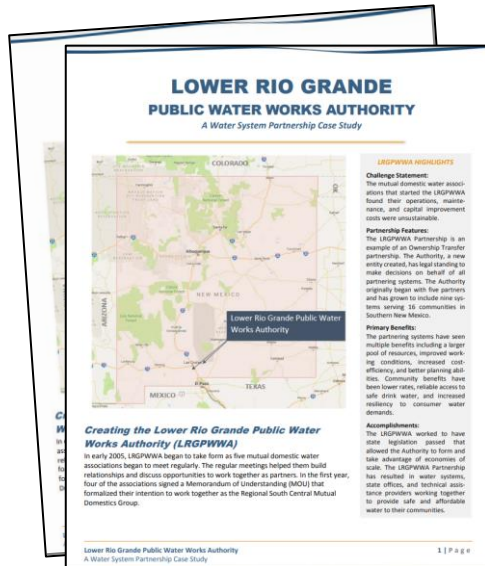


You can access these resources at: <https://www.epa.gov/dwcapacity/water-system-partnerships>

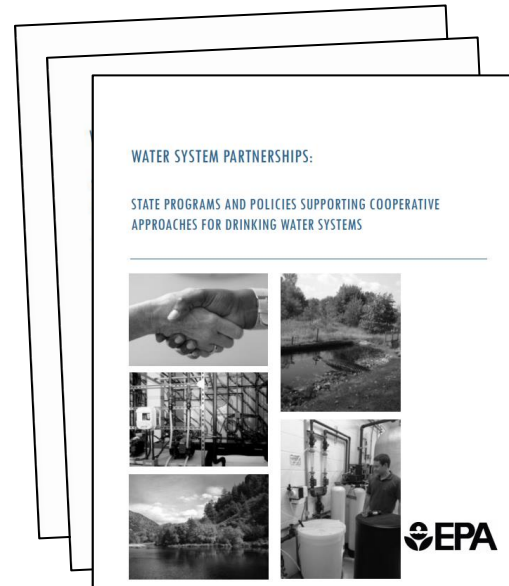


# EPA Resources

## Water System Partnerships Case Studies



## State Programs and Policies Supporting Water System Partnerships



## Water System Partnerships Funding Resources





## Resource Contacts:

EPA-OGWDW Partnerships Coordinator

Carla Hagerman, [hagerman.carla@epa.gov](mailto:hagerman.carla@epa.gov)

<https://www.epa.gov/dwcapacity/water-system-partnerships>