



**UNITED STATES ENVIRONMENTAL PROTECTION AGENCY  
REGION III**

Four Penn Center  
1600 John F. Kennedy Boulevard  
Philadelphia, Pennsylvania 19103-2852

**SUBJECT:** 2023 Update to the 2021 Long-Term Stewardship Assessment  
GE Lancaster  
EPA ID: PAD003026903  
1350 Pleasure Road  
Lancaster, PA 17601-5615

**DATE:** August 23, 2023

**TO:** Alizabeth Olhasso, RCRA Corrective Action South Section Manager  
Long Term Stewardship File for GE Lancaster

**FROM:** Linda Matyskiela and Susanne Haug, Remedial Project Managers

**Introduction:**

On June 27, 2023, the United States Environmental Protection Agency's (USEPA) Land, Chemicals, and Redevelopment Division (LCRD) representatives, Linda Matyskiela and Susanne Haug, conducted a long-term stewardship (LTS) assessment site visit of the GE Lancaster Facility in Lancaster, PA to update the 2021 LTS assessment (Attached). The GE Lancaster Facility is currently in compliance with EPA's Final Decision and Federal Corrective Action Order/PADEP Order Restrictions.

**Long-term Stewardship Site Visit:**

The attendees were:

Name	Organization	Email Address
Linda Matyskiela	US EPA Region 3	<a href="mailto:matyskiela.linda@epa.gov">matyskiela.linda@epa.gov</a>
Susanne Haug	US EPA Region 3	<a href="mailto:haug.susanne@epa.gov">haug.susanne@epa.gov</a>
Kelly Lee Kinkaid	PADEP	<a href="mailto:kkinkaid@pa.gov">kkinkaid@pa.gov</a>
Domenico Tuzzato	PADEP	<a href="mailto:dtuzzato@pa.gov">dtuzzato@pa.gov</a>
Michele Keck	PADEP	<a href="mailto:mkeck@pa.gov">mkeck@pa.gov</a>
Jordan Wilson	PADEP	<a href="mailto:jwilson@pa.gov">jwilson@pa.gov</a>
Kevin Mooney	GE	<a href="mailto:kevin.mooney@ge.com">kevin.mooney@ge.com</a>
Joseph Zaso	Arcadis	<a href="mailto:Joseph.Zaso@arcadis.com">Joseph.Zaso@arcadis.com</a>

**Current Site Status Update:**

**Per- and Polyfluoroalkyl Substances (PFAS)**

After PFAS was detected at the nearby City of Lancaster Water Department, PADEP requested GE to sample for PFAS at their Lancaster Facility. The source of the PFAS detected at the Water Department is unknown. GE plans to sample for PFAS in 2023.

## **Vapor Intrusion**

GE plans to submit a sampling plan to evaluate the potential for vapor intrusion in nearby residences.

## **Conclusions and Recommendations:**

The GE Lancaster Facility is currently in compliance with EPA's Final Decision and Federal Corrective Action Order/PADEP Order Restrictions. During the 2023 LTS inspection, several issues and recommendations were discussed and are summarized below:

- PADEP had several questions regarding the notes in the groundwater sampling field logs and intends to observe a future groundwater sampling event.
- The labels on several wells are difficult to read. GE should ensure that all wells are clearly labeled.
- At least 1 well pair (12S and 12D) may have been incorrectly labeled or are reversed on figures. GE should verify that the wells are correctly labelled, and their locations are correctly shown on figures. GE should also verify that historic groundwater monitoring data is associated with the correct wells.



UNITED STATES ENVIRONMENTAL PROTECTION AGENCY  
REGION III  
1650 Arch Street  
Philadelphia, Pennsylvania 19103-2029

**SUBJECT:** GE Lancaster  
1350 Pleasure Road, Lancaster PA  
EPA ID: PAD003026903

**DATE:** 09/21/2021

Long-term Stewardship Assessment

**FROM:** Linda Matyskiela, Project Manager (3LD20) *Linda A. Matyskiela*

**TO:** Long Term Stewardship File for GE Lancaster  
RCRA Corrective Action Branch 2 (3LD20)

**Remedy Review Summary:**

EPA's Final Decision and Response to Comments (FDRTC) dated September 30, 1992 requires GE Lancaster, located at 1350 Pleasure Road, Lancaster, PA (Facility), to implement the final remedy selected in the FDRTC which includes that groundwater under this entire property shall not be used for potable purposes. An engineering control consisting of a groundwater pump and treatment system has been in operation since 1987. The upper quarry landfill area and the lower lagoon area are capped and no excavation or digging is permitted in the landfills to ensure the integrity of the landfill caps. The GE Lancaster Facility is currently in compliance with EPA's Final Decision and Federal Corrective Action Order/PADEP Order Restrictions.

**Document Review:**

The corrective action objective for groundwater at the Facility is to attain Maximum Contaminant Levels, (MCLs) throughout the plume. Specifically, the MCLs and the most recent sampling results for site contaminants are:

Contaminant	1,2-Dichloroethene ug/l	Trichloroethene ug/l	Vinyl Chloride ug/l	Tetrachloroethene ug/l
MCL	100	5	2	5
10D	2.8	2.2	<1.0	<1.0
AW-4	2.2	3.4	<1.0	<1.0
GW-9008	202	22.8	20.8	<1.0
5	3060	11.3	838	<1.0
GW-9004	221	47.3	4.9	<1.0
14	195	4.5	10.6	<1.0
18	218	174	1.2	8.1
GW-9001	44.8	64.6	<1.0	<1.0
GW-9006	197	158	1.1	7.9



GW-9020	42	62.7	<1.0	<1.0
Spring 1	14.7	34.1	<1.0	1.2

### **Recommendations:**

A Vapor Intrusion evaluation was submitted by O'Brien & Gere (OBG) on behalf of GE Lancaster to look at potential vapor issues at neighboring properties and buildings. Although site data indicates there are no impacts of site groundwater on neighboring properties, PADEP and EPA provided comments and recommendations to augment the data for review. Subsequently, a plan for future groundwater sampling at existing and potentially new wells was submitted. EPA and PADEP are reviewing the plan for on-site, offsite and neighboring residential wells.

### **Background:**

The GE Lancaster facility currently consists of a parcel of land containing a closed, capped RCRA-regulated surface impoundment (Lower Lagoon) (Figure 1), a closed, capped landfill (Upper Quarry) (Figure 1), and a groundwater recovery and treatment system (GWRTS). The facility was formerly part of the RCA Facility located on New Holland Avenue in Lancaster, Pennsylvania. The RCA Corporation owned the RCA Facility from the late 1940's to June 1986 when GE purchased the RCA Corporation. Burle Industries, Inc. subsequently purchased the former RCA manufacturing plant from GE in July 1987. As part of the sale agreement, GE retained the property containing the Lower Lagoon, the Upper Quarry, and the GWRTS.

Results from early investigations indicated that volatile organic compounds (VOCs) were present in the groundwater beneath the facility. The Lower Lagoon and Upper Quarry were closed and capped in 1987 in an effort to address the sources of groundwater contamination. The GWRTS also began operation in 1987. Its functions are to keep contaminated groundwater from leaving the site property and to reduce the size of the contaminated plume. Remediation of the groundwater has three steps 1) groundwater recovery, 2) air stripping to remove VOCs from the groundwater, and 3) removal of VOCs from the stripper off-gas. During 2020, the GWRTS consisted of six recovery points: five wells and one surface water spring. An additional five wells are used as monitoring points.

A groundwater pump and treat system, in operation since 1987, continues to operate. No future activity is planned for this property. No excavation or digging is allowed on the landfill to ensure integrity of the cap. Groundwater under this property will not be used for potable purposes.

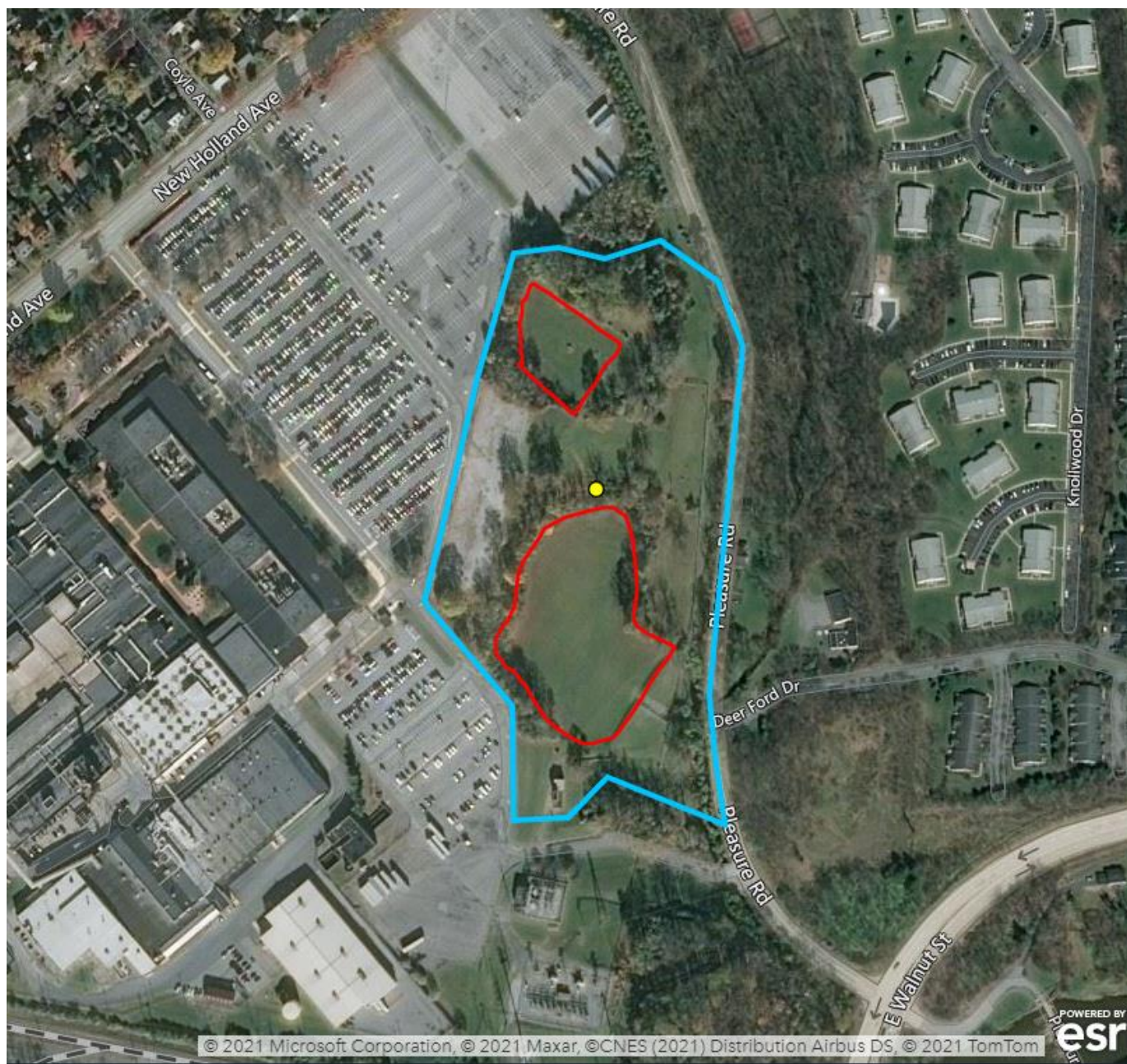
The investigation and any necessary cleanup activities are being implemented in accordance with a federal Corrective Action Order issued on December 1, 1988, and a Pennsylvania Department of Environmental Protection (PADEP) Order issued in 2008.

### **Documents Reviewed:**

EPA Facility Fact Sheet, which includes:	12/16/1988 3008(h) Order
	Revised Statement of Basis for Proposed Corrective Measures
	9/30/1992 Final Decision and Response to Comments (FDRTC)
	2012 Comprehensive Monitoring Evaluation Inspection
	2010 O&M Plan
	2010 Sampling and Analysis Plan
	2014 Long Term Stewardship (LTS) Report
	2010-2020 Annual Reports

In addition, financial assurance status of the facility was confirmed; EPA fact sheets, links and mapping documents were reviewed and updated; and a site visit was coordinated with the facility and PADEP.

**Figure 1 - General Electric Company, Lancaster, PA Facility Map**



Institutional Control/Engineering Control  
Corrective Action Remedy Summary

Facility Name	GE Lancaster			
Address	1350 Pleasure Road, Lancaster PA			
EPA ID Number	PAD003026903			
Are there restrictions or controls that address:	Yes	No	Area(s)	Description of restrictions, controls and mechanism
Groundwater Use	X		Entire Facility shown as blue line on map.	3008(h) Order restricts groundwater to non-potable uses. PADEP: groundwater has Non-use Aquifer Designation.
Residential Use		X		
Excavation		X		
Vapor Intrusion		X		
Capped Area(s)	X		2 Areas: Upper Quarry and Lower Lagoon each have a RCRA cap. Shown as red lines on map.	Order: Each area has a RCRA cap and restrictions on use (no dig/no build)
Other Engineering Controls	X		Entire Facility shown as blue line on map.	Order requires groundwater pump and treatment with activated carbon
Other Restrictions		X		