



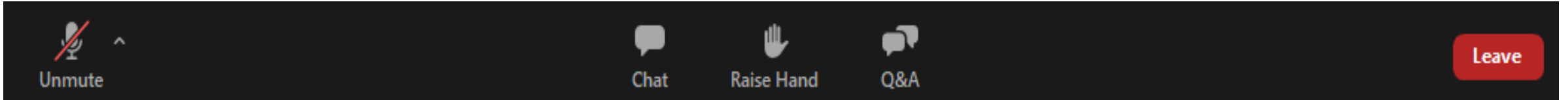
**Justice40 and the Wetland Program
Development Grants Workshop #2**

Benefits Methodology and Metrics

April 24, 2023

Webinar Logistics

Questions for Presenters



To ask a question: Type your question in the Q&A box. We will take questions at the end of the webinar during the interactive discussion.

Technical difficulties: Please send a message to Gabby Vinyard, ERG (Zoom support) or email gabby.vinyard@erg.com.

A recording of the webinar and a PDF version of today's PowerPoint presentation will be posted online following today's session.

Outline of Today's Presentation

- **Welcoming Remarks and Justice40 Workshop Series Overview**
Robert Courtnage, Acting Chief, Program Development and Jurisdiction Branch
- **Wetland Program Development Grants and Initial Justice40 Tracking Methodology**
Myra Price, Wetlands Program Development Grants National Program Lead
- **Justice40 and Outputs, Outcome and Benefits Reporting**
Rebecca Dils, Headquarters Coordinator, Enhancing States and Tribal Wetland Programs
- **Facilitated Discussion on Future Reporting of Benefits Beyond 2023**

Wetland Program Development Grants

J40 Stakeholder Workshops Remaining Schedule

Core Element Framework (CEF) Activities and Outcomes Supporting J40: May 9th

Review and discuss the potential types of activities that can be provided through the CEF.

Communicating Accomplishments: May 23rd

Discuss other potential CEF updates to advance wetland program building efforts and how EPA can support technical transfer and communicate accomplishments.

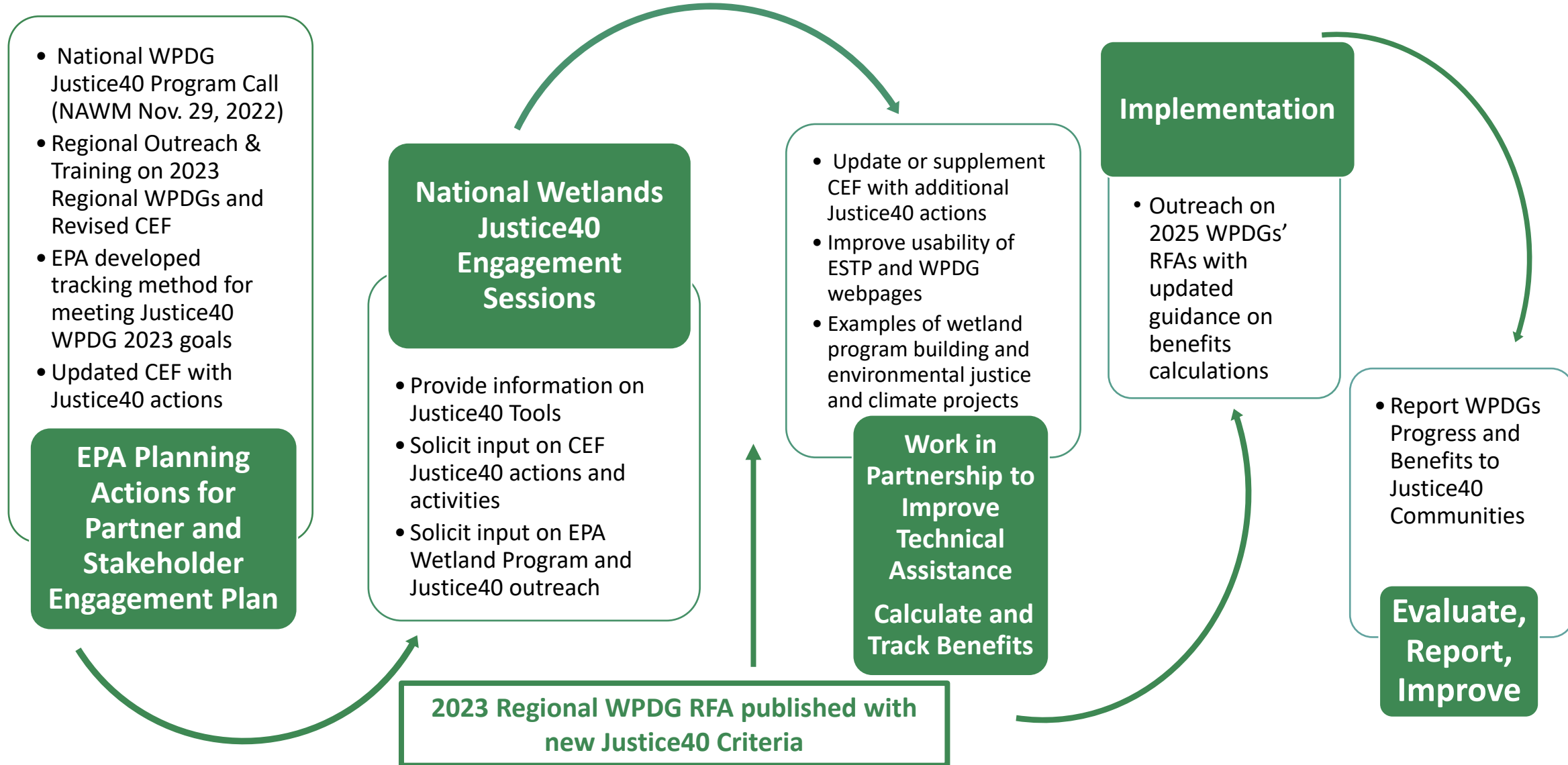
EPA Summary of Findings and Recommendations: June 6th

EPA will provide an overall summary of findings and recommendations provided by Regional ESTP Coordinators, Tribes, States, and Territories.

Justice40

- In January 2021, President Biden issued [Executive Order 14008 – Tackling the Climate Crisis at Home and Abroad](#) and announced Justice40, which mandates that **at least 40%** of the benefits of certain federal programs must flow to disadvantaged communities.
- Six pilots including State Revolving Funds.
- Expanded to include programs funded by the Bipartisan Infrastructure Law that matched the Justice40 (J40) criteria as well as additional programs. Key examples include:
 - **Wetland Program Development Grants (WPDGs)**
 - National Estuary Program
 - Geographic Programs (e.g., Chesapeake Bay, Puget Sound)
 - Gulf Hypoxia Program
 - Section 319 Grant Program

Justice40: National WPDG Engagement & Implementation



Addressing J40 through Wetland Program Development Grants

All J40 covered programs must engage in stakeholder **consultations** and ensure community stakeholders are meaningfully involved in determining program **benefits**.

Covered programs must also **report benefits** directed to disadvantaged communities.

EJ and Climate Actions and Activities were added to the Core Elements Framework.

Changes to the WPDG **Request for Applications**:

- New National Priority for climate change with points for projects that address **climate change**.
- New National Priority for J40 projects in disadvantaged communities with points for projects that address **benefits** (outcomes) to those disadvantaged communities.
- Suggestion to have a section in the application workplan that will describe:
 - **Tasks** in your applications that affect J40 communities.
 - **Outputs** and **outcomes** in your applications that affect J40 communities.
 - List, map, or describe the disadvantaged communities affected for your state, tribe, territory or local area from the Climate and Economic Justice Screen Tool (**CEJST**).
<https://screeningtool.geoplatform.gov/en/#3/33.47/-97.5>

WPDG J40 Reporting Metrics for FY23

EPA will be reporting on:

1. The number of grants awarded with J40 tasks
2. The percentage of number of awards made with J40 tasks
3. The amounting of funding associated with those J40 tasks
4. The percentage of funding associated with J40 tasks/awards

EPA will need to report on the **benefits associated** with awards at time of award and potentially when the grants close out in 1-4 years.

Examples of WPDG Benefit Outputs and Outcomes

Outputs for all Core Elements

- Development of tribal or state **Wetland Program Plan (WPP)**.
- Development of **wetland maps** directly or by supporting wetland mapping coalitions that may incorporate traditionally important and sacred species identification into the wetland types.
- Development of training materials and **tools** (e.g., assessment criteria, protocols) to help decision-makers integrate wetland protection and restoration into integrated watershed planning especially with **environmental justice, hazard mitigation**, flood, drought planning and climate adaptation.

Outcomes for all Core Elements

- Increased **quantity** of wetlands.
- Increased **quality** of wetlands.
- Improved wetland **protection** efforts.
- Increased stakeholder and decisionmaker understanding of **a wetland's condition** for a variety of “uses” including traditional and cultural uses.
- Establish **information sharing** and **strategic partnerships** with state and tribal CWA/SDWA programs, habitat and wildlife conservation efforts, water quantity programs that lead to more wetland acreage restored and protected.

Examples of WPDG Benefit Outputs and Outcomes (Cont.)

Outputs for Specific Core Elements

- Development of a **report on the ambient condition** of wetland resources at a state, tribal or community, population scale including traditionally important and sacred species, sites, etc. (**Monitoring and Assessment Core Element**).
- Development of strategies to integrate goals of wetland protection and restoration programs or activities **into flood mitigation**, recharge or water reuse planning (**Voluntary Restoration/Protection**).
- Development of methods or strategies to incorporate wetland water quality standards into EPA approved tribal water quality standards including traditional and culture **uses (Wetland-specific Water Quality Standard Core Element)**
- Development of tools or procedures, or studies and programs, to evaluate ecological performance of compensatory mitigation projects (e.g., mitigation banks, in-lieu-fee projects, and permittee-responsible mitigation) and incorporate results, findings, lessons learned into future compensatory mitigation project decision-making to help determine mitigation program success (**Regulatory Core Element**).

Outcomes for Specific Core Elements

- Improved baseline information on wetland extent, **condition, and performance** to inform tribal regulatory programs.
- Increased stakeholder and **decisionmaker understanding** of a wetland's condition for a variety of "uses" including, traditional and cultural uses and providing other ecosystem services
- Increased stakeholder and decisionmaker understanding of wetland ecologic condition and/or function at **population scales (i.e., tribal or regional)**.
- Increased stakeholder and decision-maker understanding of the ecological success of **compensatory mitigation** and use to inform stakeholders and decisionmakers.

Questions for Today's Group Discussion Session and Future WPDG and J40 Workshops

1. How can EPA properly capture and understand the **anticipated** benefits to J40 communities from WPDG programs? What types of *special considerations* for J40 communities can be captured in WPDG reporting?
2. There are various ways EPA could ask WPDG recipients to **report** anticipated benefits to J40 communities. What methods for reporting anticipated benefits would be most **practical** or **feasible** for your State or Tribe?

Examples of Other Methods for Categorizing Anticipated Benefits to J40 Communities in WPDG Tracking & Reporting

- Human health impacts of wetland program building actions to J40 Communities: **Benefit may be overall risk reduction to human health based on source water protection.**
- Ecological impacts of wetland program building actions to J40 communities: **Benefit may be an increased potential for flood protection and habitat restoration.**
- Quality of life and socioeconomic impacts of wetland program building to J40 communities: **Benefit may be increased access to recreation, open space, and associated tourism dollars or "peace of mind."**
- Outreach and Education on special considerations of J40 communities linked to wetland program building actions and activities: **Benefit may be expanded education and stewardship and/or a communities engagement in wetland program building actions.**
- Partnerships that are crucial for working with J40 Communities directly on wetland program building: **Benefit may be consistent information flow and participation in stewardship.**

Examples of Qualitative Reporting of Benefits to J40 Communities in WPDG Tracking & Reporting

WPDGs Projects' J40 Benefits:

- Expands the adaptive capacity of communities to be **resilient** to climate change
- Improves habitat, addresses water and wetland quality challenges, or provides other **ecosystem services**.
- Creates opportunities for **equitable public access** to the benefits of wetlands, including all types of recreation.
- Expands education and/or deepens various communities' **engagement** in wetland program building actions.
- Environmental results that are **unique** to J40 communities.

Wetland Program Development Grants

J40 Stakeholder Workshops Remaining Schedule

Core Element Framework (CEF) Activities and Outcomes Supporting J40: May 9th

Review and discuss the potential types of activities that can be provided through the CEF.

Communicating Accomplishments: May 23rd

Discuss other potential CEF updates to advance wetland program building efforts and how EPA can support technical transfer and communicate accomplishments.

EPA Summary of Findings and Recommendations: June 6th

EPA will provide an overall summary of findings and recommendations provided by Regional ESTP Coordinators, Tribes, States, and Territories.

EPA CEF and WPP Information

- Core Element Framework and WPDGs:

<https://www.epa.gov/wetlands/core-elements-effective-state-and-tribal-wetland-programs>

http://water.epa.gov/grants_funding/wetlands/cefintro.cfm

- Approved Wetland Program Plans:

<https://www.epa.gov/wetlands/state-and-tribal-wetland-program-plans>

- October 2009 WPP memorandum from EPA:

http://water.epa.gov/type/wetlands/upload/wetland_program_plan_memorandum.pdf

- EPA Regional Grants Coordinators and ESTP Contacts:

<https://www.epa.gov/wetlands/wetland-program-development-grants-and-epa-wetlands-grant-coordinators>