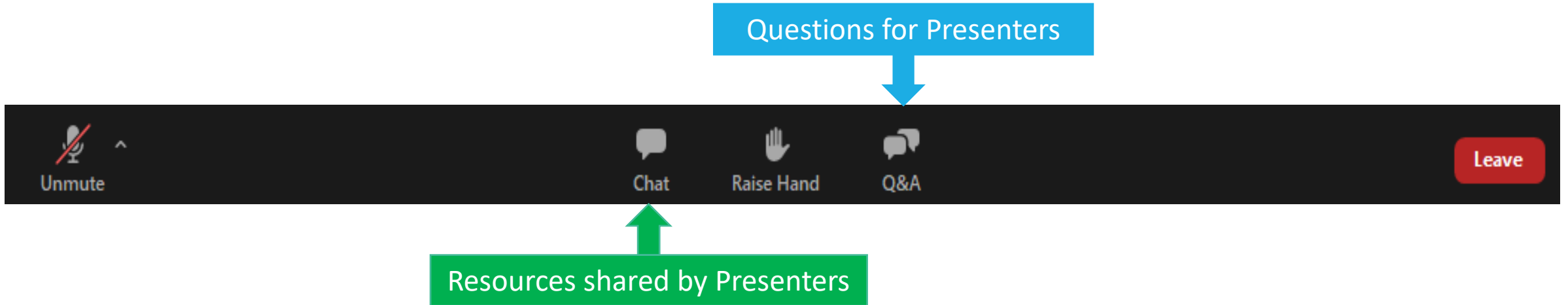


Introduction to Justice40 and the Wetland Program Development Grants:

EJScreen and Climate and Economic Justice Screening Tool (CEJST)

April 4, 2023

Webinar Logistics



- **To ask a question:** Type your question in the Q&A box. We will take questions at the end of the webinar.
- **Technical difficulties:** Please send a message to Gabby Vinyard (ERG Zoom support) or email gabby.vinyard@erg.com.
- A recording of the webinar and a PDF version of today's PowerPoint presentation will be posted online following today's session.

Outline of Today's Presentation

- **Welcome and Introduction**
- **Background on the EPA Wetland Program Development Grants (WPDG) & Justice40 Initiative**
- **Presentation on EJScreen and the Climate and Economic Justice Screening Tool (CEJST)**
- **Discussion and Questions**

Wetland Program Development Grants Justice40 Stakeholder Workshop Schedule

Benefits Methodology and Metrics: April 24th

Review the current methodology being used to demonstrate benefits and discuss other proposed methods and metrics that may be used in grant reporting under the Justice40 initiative.

Core Element Framework (CEF) Activities and Outcomes Supporting J40: May 9th

Review and discuss the potential types of activities that can be provided through the CEF.

Communicating Accomplishments: May 23rd

Discuss other potential CEF updates to advance wetland program building efforts and how EPA can support technical transfer and communicate accomplishments.

EPA Summary of Findings and Recommendations: June 6th

EPA will provide an overall summary of findings and recommendations provided by Regional ESTP Coordinators, Tribes, States, and Territories.

To learn more and register for the workshops, please visit <https://www.epa.gov/wetlands/justice40-and-wetland-program-development-grants>.

Enhancing State and Tribal Wetland Programs (ESTP) Components

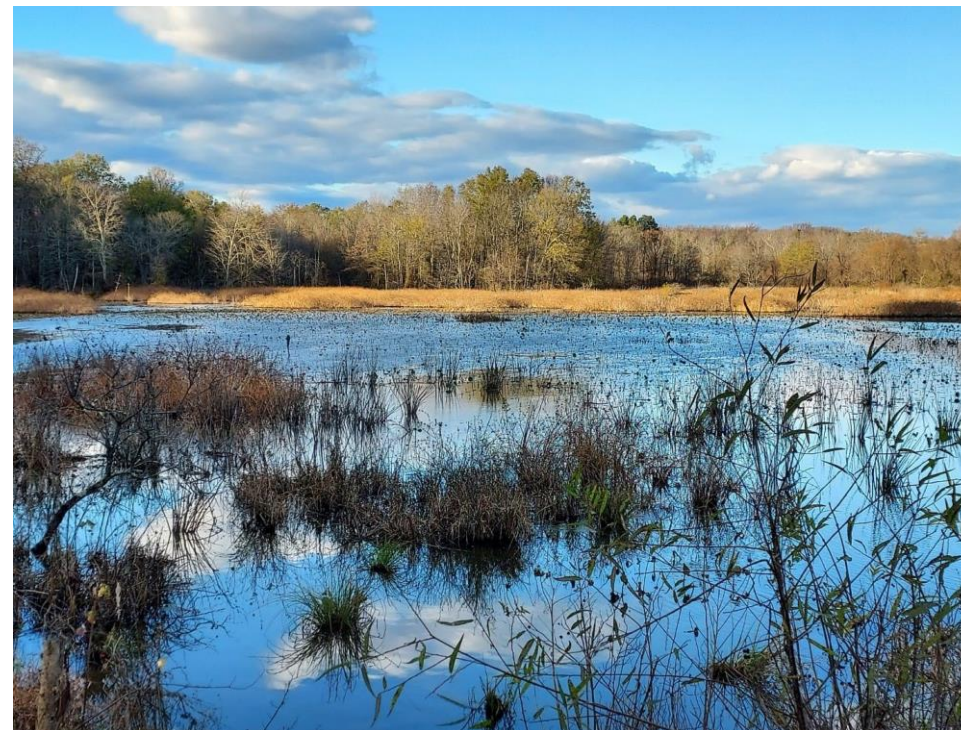
- Wetland Program Development Grants (WPDGs)
- Core Elements Framework (CEF) & Wetland Program Plans (WPPs)
- Peer-to-Peer Networks
- EPA Targeted Technical Assistance
- Demonstrate Progress in Building Comprehensive Wetland Programs in States, Tribes, and Territories

Core Elements (CEF) Framework

- Foundational Document for WPDG projects & WPPs
- 4 Core Elements remain the same
- Includes initial Justice40 Actions and Activities under each Core Element
- Helps EPA track progress of grantees
- Revised and published February 2023
- <https://www.epa.gov/wetlands/core-elements-effective-state-and-tribal-wetland-programs>

TRIBAL, STATE, AND TERRITORY

WETLANDS PROGRAM CORE ELEMENT FRAMEWORK



U.S. ENVIRONMENTAL PROTECTION AGENCY

OFFICE OF WATER

OFFICE OF WETLANDS, OCEANS, AND WATERSHEDS

EPA-843-R-23-002

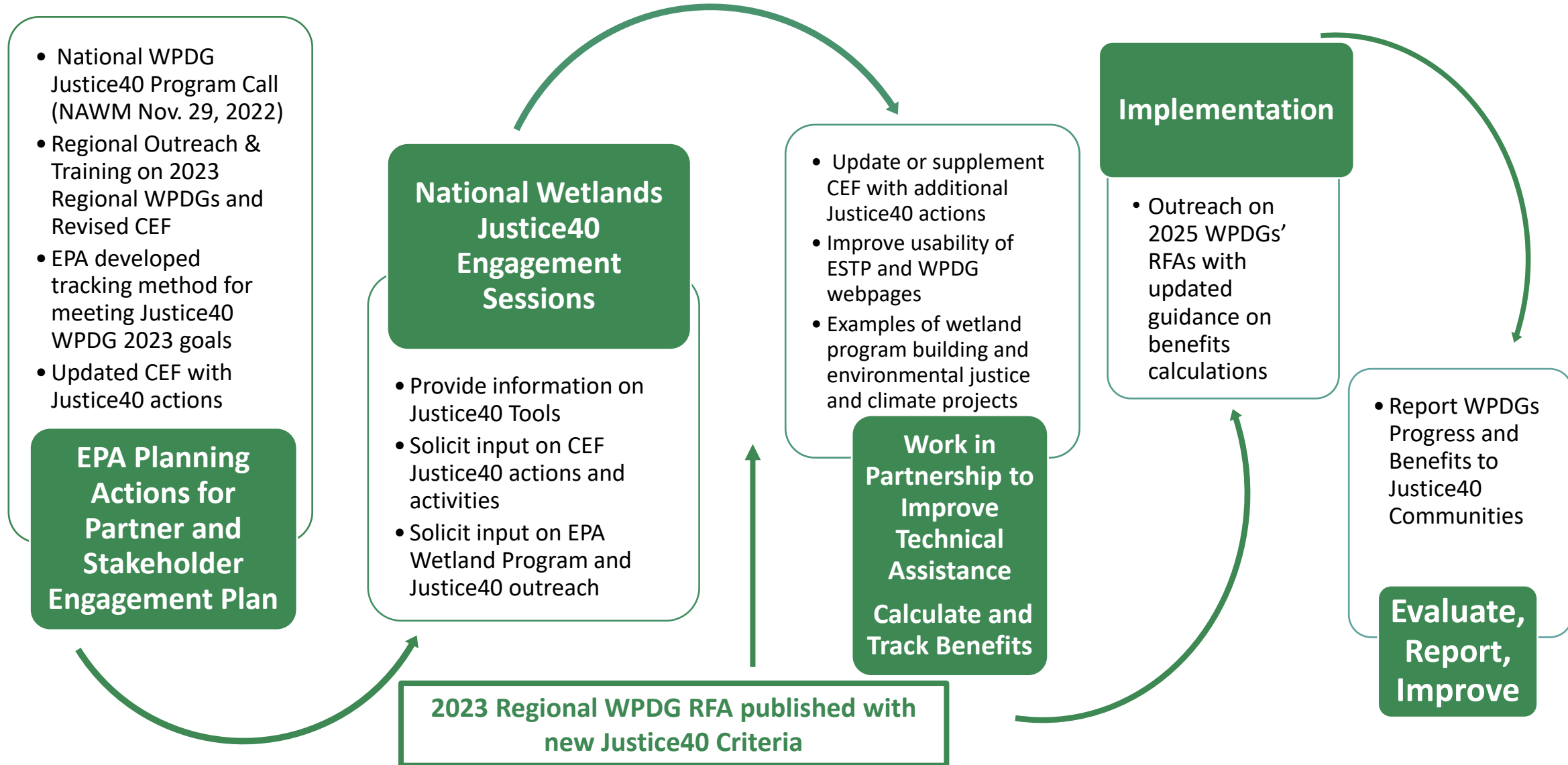
FEBRUARY 2023

TRIBAL, STATE, AND TERRITORY
WETLANDS PROGRAM CORE ELEMENT FRAMEWORK

Justice40

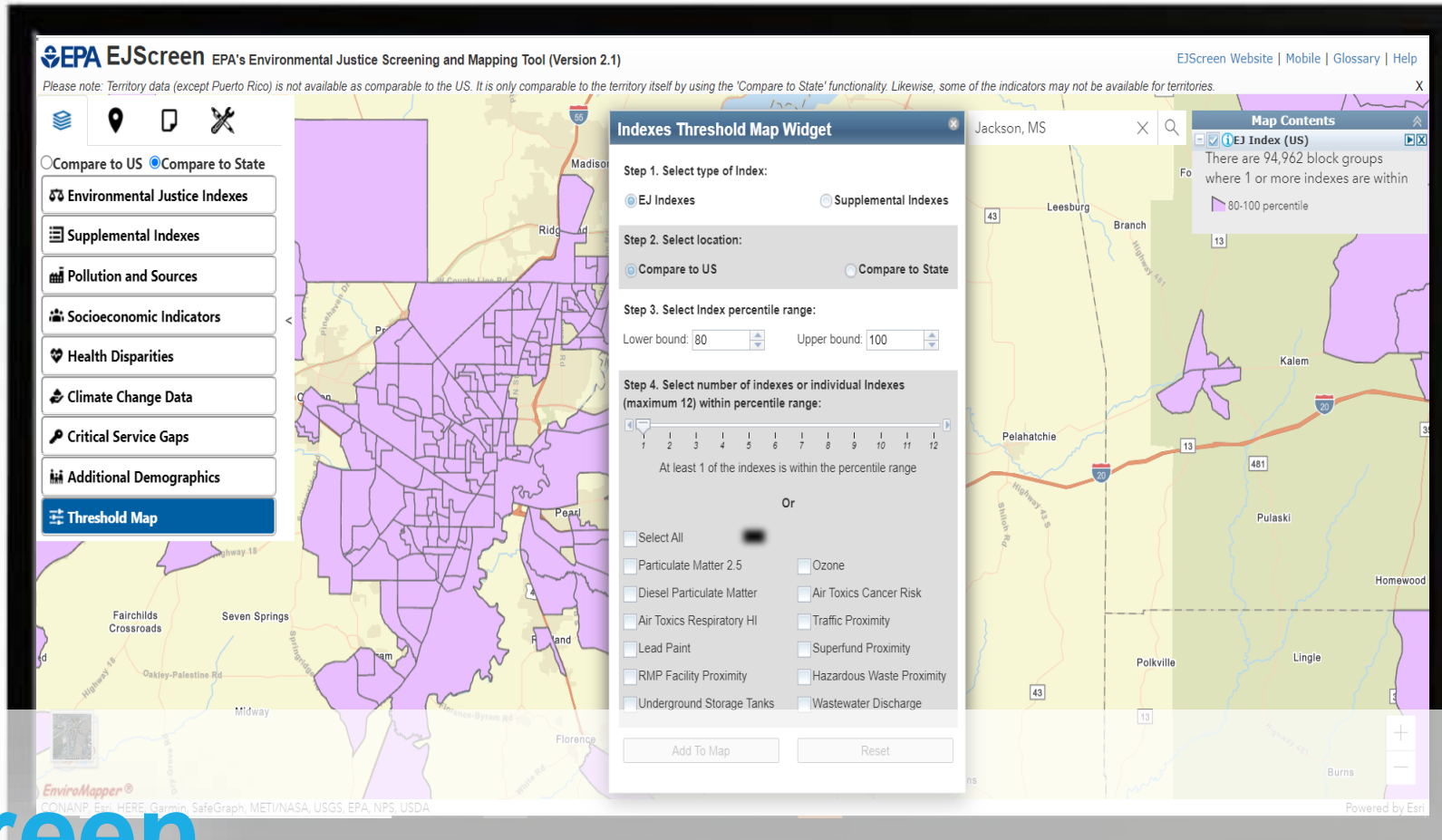
- In January 2021, President Biden issued [Executive Order 14008 – Tackling the Climate Crisis at Home and Abroad](#) and announced Justice40, which mandates that **at least 40%** of the benefits of certain federal programs must flow to disadvantaged communities.
- Six pilots including State Revolving Funds.
- Expanded to include programs funded by the Bipartisan Infrastructure Law that matched the J40 criteria as well as additional programs. Key examples include:
 - **Wetland Program Development Grants**
 - National Estuary Program
 - Geographic Programs (e.g., Chesapeake Bay, Puget Sound)
 - Gulf Hypoxia Program
 - Section 319 Grant Program

Justice40: National Wetland Program Development Grant Program Engagement & Implementation



Presentation on EJScreen and the Climate and Economic Justice Screening Tool (CEJST)

Matt Lee of EPA's Office of Environmental Justice and External Civil Rights



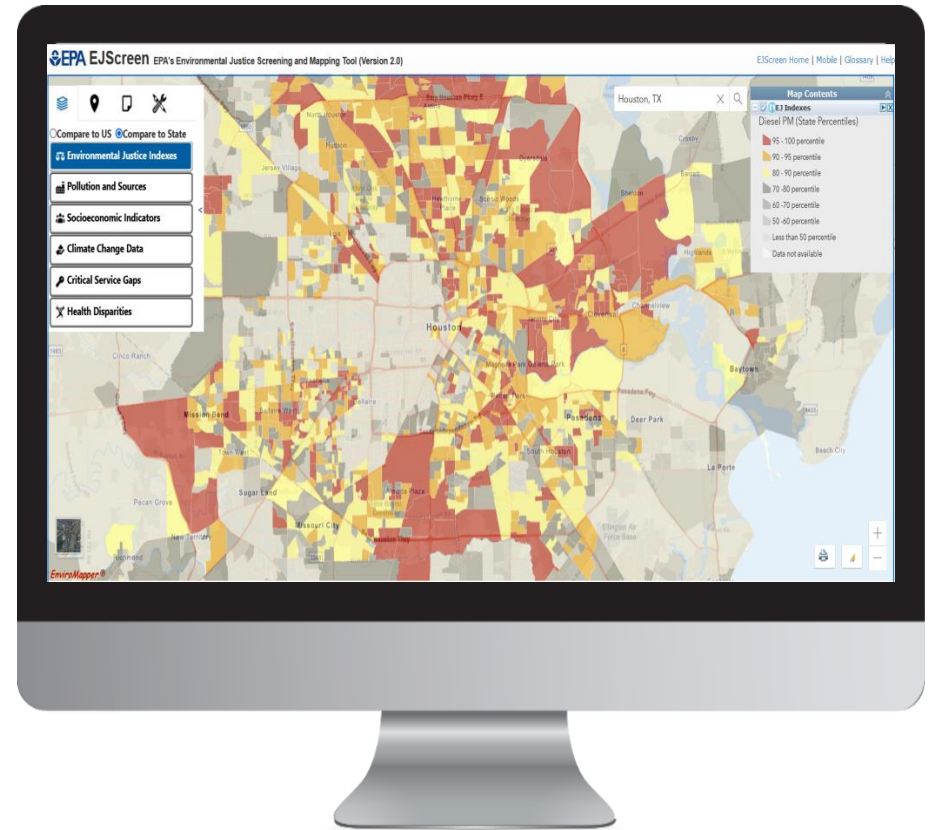
EJScreen

EPA's Environmental Justice Screening Tool



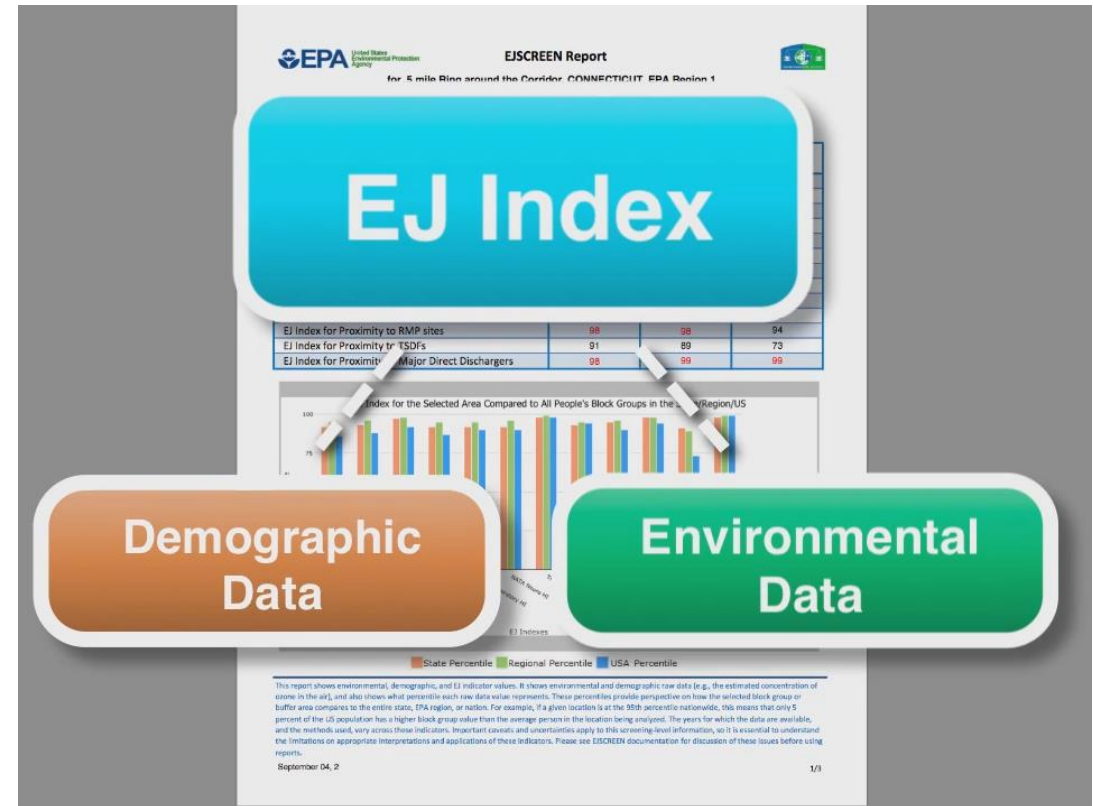
What is EJScreen?

- EPA's web-based GIS tool for nationally consistent EJ screening and mapping
- Combines environmental and socioeconomic data to highlight areas where vulnerable populations may be disproportionately impacted by pollution
- Starting point for agency considerations of environmental justice



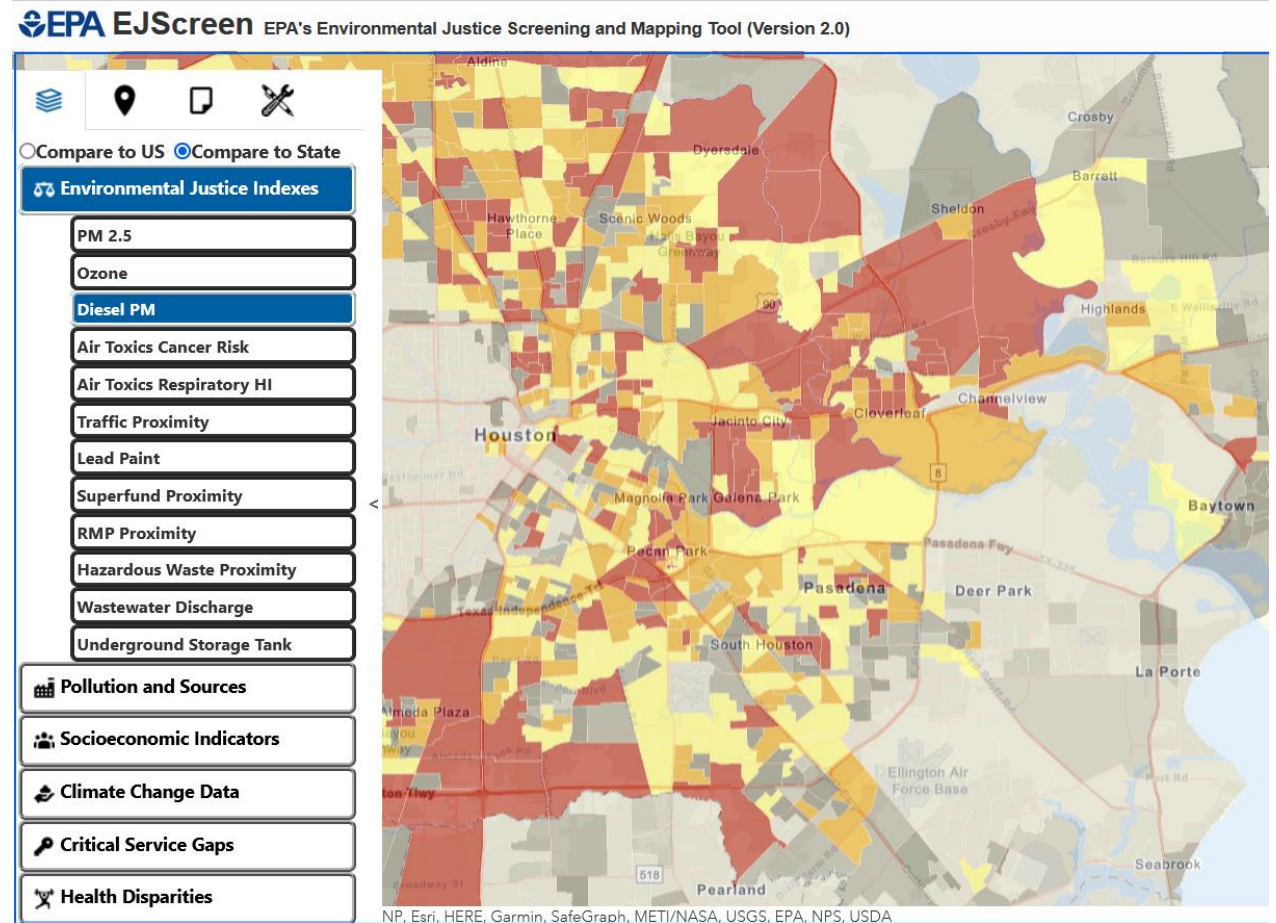
Primary EJScreen Datasets

- **EJ Indexes (12)**
- **Supplemental Indexes (12)**
- **Environmental (12 indicators)**
- **Socioeconomic (7 indicators)**
- **Health (3 indicators)**
- **Climate (6 indicators)**
- **Critical Service Gaps (3 indicators)**



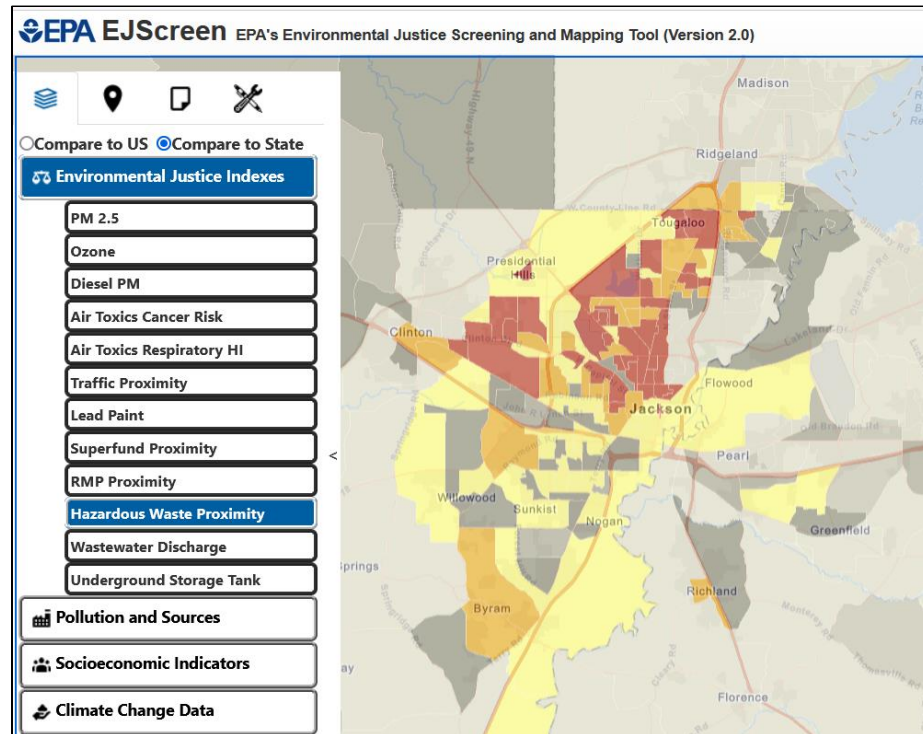
EJScreen Key Features

- Annually updated environmental data
- Annually updated demographics – from most recent U.S. Census Bureau American Community Survey (ACS)
- Highest resolution data available
- Ability to download data
- Accessibility / ease of use



Viewing EJScreen Data

You can view the data within reports or on maps.



The screenshot shows an EJSCREEN Report for a 1-mile ring centered at 33.828624, -118.932191, California, EPA Region 9, with an approximate population of 23624. The report includes a table of Selected Variables, categorized into Environmental Indicators and Demographic Indicators.

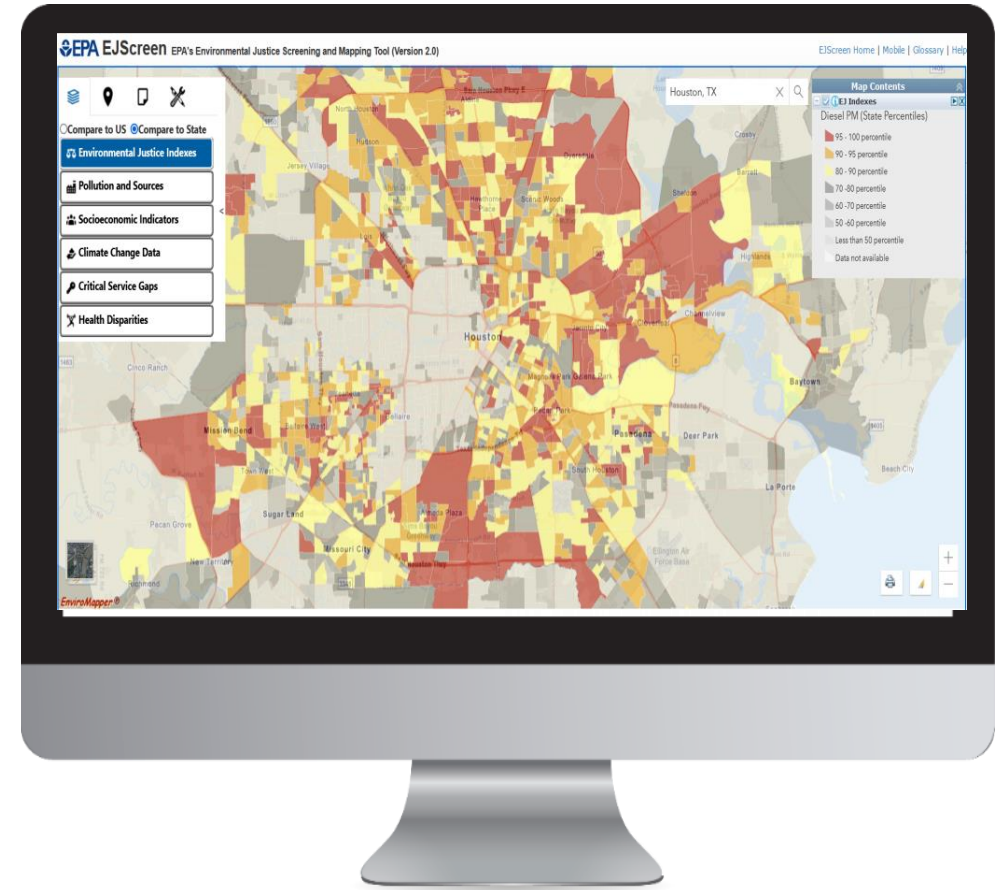
Selected Variables	Raw Data	State Avg.	%ile in State	EPA Region Avg.	%ile in EPA Region	USA Avg.	%ile in USA
Environmental Indicators							
Particulate Matter (PM 2.5) (µg/m ³)	13.3	10.6	94	10.3	97	10.7	88
Ozone (ppb)	41.6	51.6	19	52.4	15	48.3	23
NATA Diesel PM (µg/m ³) ^a	2.57	1.29	87	1.2	90-90th	0.924	90-95th
NATA Cancer Risk (lifetime risk per million) ^a	130	76	92	69	90-95th	49	95-100th
NATA Respiratory Hazard Index ^a	7.4	3.9	98	3.5	95-100th	2.3	98-100th
NATA Neurological Hazard Index ^a	0.18	0.072	98	0.069	95-100th	0.063	95-100th
Traffic Proximity and Volume (daily traffic count/1000 ft road)	810	210	91	190	92	110	95
Lead Paint Indicator (% the 1980 housing)	0.57	0.3	78	0.28	82	0.3	79
MFL Proximity (1/1000 ft distance)	0.066	0.13	81	0.11	86	0.095	71
BMP Proximity (facility count/100 distance)	1.1	0.46	90	0.41	91	0.31	94
TSDF Proximity (facility count/100 distance)	0.51	0.13	95	0.12	96	0.054	99
Water Discharger Proximity (facility count/100 distance)	0.33	0.18	98	0.19	97	0.25	81
Demographic Indicators							
Primary Demographic Index	47%	47%	50	46%	53	35%	71
Minority Population	71%	60%	58	57%	62	30%	80
Low Income Population	23%	35%	36	35%	36	24%	36
Geographically Isolated Population	7%	11%	48	10%	63	5%	78
Population With Less Than High School Education	13%	20%	48	10%	49	15%	55
Population Under 5 years of age	5%	7%	32	7%	34	7%	30
Population over 64 years of age	16%	13%	77	12%	75	13%	56

A map gives you one indicator at a time, for each of the block groups within a wider area (e.g. across several miles)

A standard report gives you all the indicators at once for a single specified location

EJScreen Resources

- [EJScreen website](#)
- [Trainings and Office Hours](#)
 - Recordings of EJScreen 2.1 Trainings
 - Public Office Hours
 - April 19th at 12 p.m. E.T.



[Click to access EJScreen Tool](#)

Climate and Economic Justice Screening Tool (CEJST)

- In [Executive Order 14008](#) on *Tackling the Climate Crisis at Home and Abroad*, President Biden directed the Council on Environmental Quality (CEQ) to create a [Climate and Economic Justice Screening Tool \(CEJST\)](#)
- CEJST's clear and singular purpose is to help Federal agencies **identify disadvantaged communities** that have been historically marginalized, underserved, and overburdened by pollution for the purposes of implementing the **Justice40 Initiative**
 - Where to direct at least 40% of the overall benefits of certain Federal investments

CEJST & EJScreen

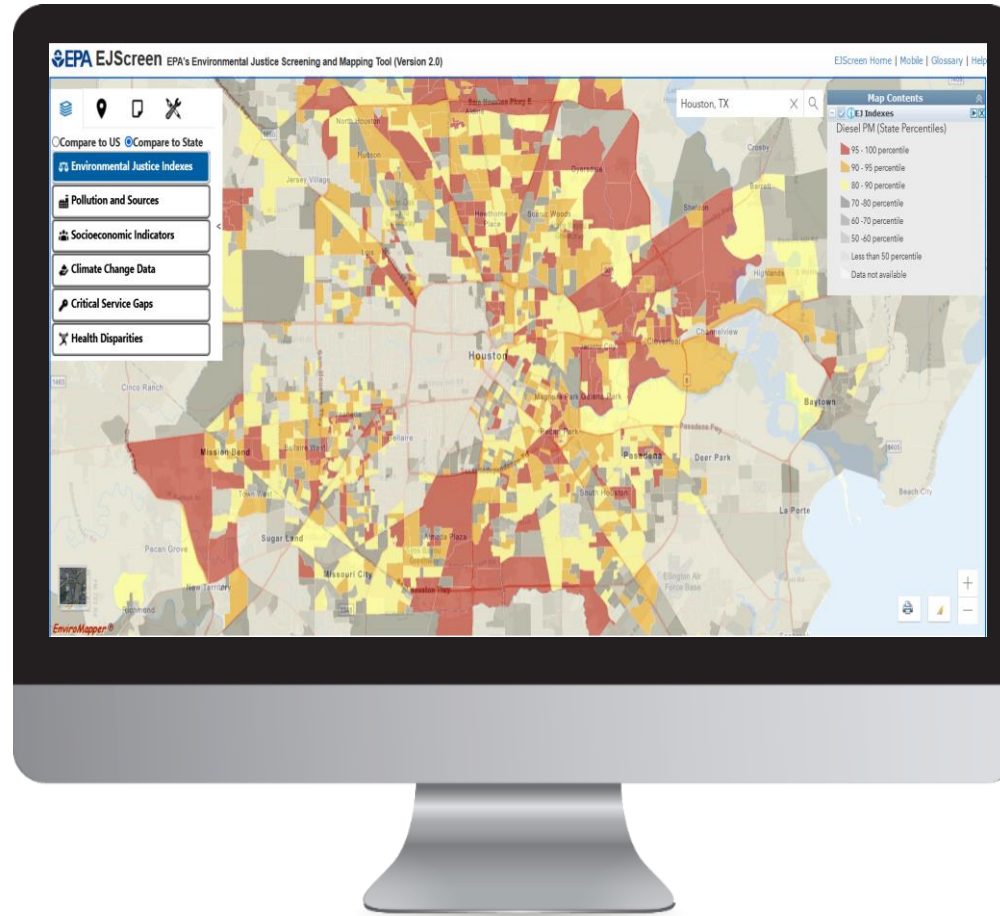
Similarities

- CEJST is largely based on the same datasets featured in EJScreen.
 - socioeconomic, environmental, climate & health indicators
- Ten environmental and climate datasets featured as criteria in CEJST are pulled directly from EJScreen
- Obvious extensive overlap in terms of geographies highlighted by both tools

Key Differences

- EJScreen features block group level refinement while CEJST is at the tract level
- CEJST only provides tract level data and does not provide user-driven analytical capacities
 - E.g., no user-defined areas
- CEJST does not incorporate race/ethnicity into methodology
- CEJST is a labeling tool (“**disadvantaged community**”), while EJScreen does not label communities

LIVE DEMO



[Click to access EJScreen Tool](#)

Questions?

Contact Information

Matthew T. Lee

Office of Environmental Justice and External Civil Rights

Lee.Matthew@epa.gov

Wetland Program Development Grants Justice40 Stakeholder Workshop Schedule

Benefits Methodology and Metrics: April 24th

Review the current methodology being used to demonstrate benefits and discuss other proposed methods and metrics that may be used in grant reporting under the Justice40 initiative.

Core Element Framework (CEF) Activities and Outcomes Supporting J40: May 9th

Review and discuss the potential types of activities that can be provided through the CEF.

Communicating Accomplishments: May 23rd

Discuss other potential CEF updates to advance wetland program building efforts and how EPA can support technical transfer and communicate accomplishments.

EPA Summary of Findings and Recommendations: June 6th

EPA will provide an overall summary of findings and recommendations provided by Regional ESTP Coordinators, Tribes, States, and Territories.

To learn more and register for the workshops, please visit <https://www.epa.gov/wetlands/justice40-and-wetland-program-development-grants>.

EPA Environmental Justice Resources

- [Executive Order 14008 – Tackling the Climate Crisis at Home and Abroad](#)
- [Executive Order 12898 – CEQ Climate and Economic Justice Screening Tool](#)
- [CEJST](#)
- [Interim OMB Implementation Guidance for the Justice40 Initiative](#)
- [EPA Strategic Plan](#)
- [EPA Equity Action Plan](#)
- [EPA National Environmental Justice Community Engagement Calls](#)
- [EPA EJ Webinar Series for Tribes and Indigenous Peoples](#)

EPA CEF and WPP Information

- Core Element Framework and WPDGs:

<https://www.epa.gov/wetlands/core-elements-effective-state-and-tribal-wetland-programs>

http://water.epa.gov/grants_funding/wetlands/cefintro.cfm

- Approved Wetland Program Plans:

<https://www.epa.gov/wetlands/state-and-tribal-wetland-program-plans>

- October 2009 WPP memorandum from EPA:

http://water.epa.gov/type/wetlands/upload/wetland_program_plan_memorandum.pdf

- EPA Regional Grants Coordinators and ESTP Contacts:

<https://www.epa.gov/wetlands/wetland-program-development-grants-and-epa-wetlands-grant-coordinators>