



U.S. EPA Region 7

Land Revitalization Resources

www.epa.gov/aboutepa/region-7-land-revitalization



Brownfield Program Grants

Assessment Grants: Assessment grants provide funding for a grant recipient to inventory, characterize, assess and conduct planning and community involvement related to brownfields sites. Eligible for governmental entities and coalitions.

- Visit www.epa.gov/brownfields/brownfields-assessment-grants for more information.

Cleanup Grants: Cleanup grants provide funding for a grant recipient to carry out cleanup activities at brownfields sites. Eligible for governmental entities, coalitions, and nonprofits.

- Visit www.epa.gov/brownfields/brownfields-cleanup-grants for more information.

Job Training Grants: The Brownfields Job Training (JT) Grants allow nonprofits, local governments, and other organizations to recruit, train, and place unemployed and under-employed residents of areas affected by the presence of brownfield sites. Through the JT Program, graduates develop the skills needed to secure full-time, sustainable employment in various aspects of hazardous and solid waste management and within the larger environmental field, including sustainable cleanup and reuse, and chemical safety. These green jobs reduce environmental contamination and build more sustainable futures for communities. (Note: The former Environmental Workforce Development and Job Training Program is now called the Brownfields Job Training Program.)

- Visit www.epa.gov/brownfields/brownfields-job-training-jt-grants for more information.

Revolving Loan Fund Grants: Revolving Loan Fund (RLF) Grants provide funding for a grant recipient to capitalize a revolving loan fund and provide sub-awards to carry out cleanup activities at brownfields sites. Through these grants, EPA strengthens the marketplace and encourages stakeholders to leverage resources to clean up and redevelop brownfields.

- Visit www.epa.gov/brownfields/brownfields-revolving-loan-fund-rlf-grants for more information.

Multi-Purpose Grants: Multipurpose (MP) grants provide funding to carry out a range of eligible assessment and cleanup activities with a proposed target area, such as a neighborhood, a number of neighboring towns, a district, a corridor, a shared planning area or a census tract.

- Visit www.epa.gov/brownfields/brownfields-multipurpose-grants for more information.



Before and after images of the Utah Station Grill. EPA remediated the site by removing eight large underground tanks; conducted a market analysis; met with local elected officials and the local neighborhood association; and developed conceptual site design drawings.



Direct Technical Assistance

Targeted Brownfields Assessment (TBA): EPA contractor conducts Phase I/II environmental site assessments, risk assessments, and develops cleanup options and cost estimates based on potential future use.

- Contact bynum.whitney@epa.gov for more information.

Technical Assistance to Brownfields Communities (TAB): The TAB program provides technical assistance to communities and other stakeholders on brownfields issues with the goal of increasing the community's understanding and involvement in brownfields cleanup and revitalization, and helping to move brownfields sites toward cleanup and reuse.

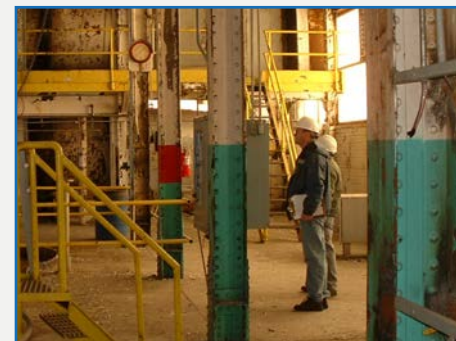
- Visit www.kstatab.org for more information.

Council of Development Finance Agencies (CDFA): The CDFA Brownfields Technical Assistance Program is made possible by a grant from EPA and is intended to provide technical assistance and resources on brownfields redevelopment financing.

- Visit www.cdfabrownfields.org for more information.

Groundwork USA: Groundwork USA is a national organization that engages local businesses, residents and government officials to revitalize neighborhoods and transform community liabilities into community assets.

- Visit www.groundworkusa.org for more information.



RE-Powering America's Land: Offers mapping and screening tools, solar and wind decision trees, feasibility studies, and fact sheets.

- Visit www.epa.gov/re-powering for more information.

Public Infrastructure Coordination Assessment and Planning Tool: Focuses on municipal water, wastewater, storm water, and road infrastructure.

- Visit www.epa.gov/brownfields/public-infrastructure-coordination-assessment-and-planning-tool for more information.

EPA Environmental Finance Centers: The Environmental Finance Center (EFC), housed within Wichita State University's Hugo Wall School of Public Affairs, is one of 10 university-based centers across the country that provides communities with professional training, technical assistance, and applied research to equip officials in making sound financial and environmental decisions.

- Visit www.wichita.edu/academics/fairmount_college_of_liberal_arts_and_sciences/hugowall/efc for more information.

Brownfields Roadmap: The Brownfields Roadmap breaks down brownfields site investigation and cleanup into an easy to understand, step-by-step process.

- Visit www.epa.gov/brownfields/brownfields-road-map for more information.



U.S. EPA Region 7

Land Revitalization Resources

www.epa.gov/aboutepa/region-7-land-revitalization



Smart Growth Resources



Building Blocks for Sustainable Communities: One- to two-day, targeted technical assistance to give communities tools to implement smart growth development approaches.

- Visit www.epa.gov/smartgrowth/building-blocks-sustainable-communities for more information.

Cool & Connected: Helps rural communities use broadband service to revitalize main streets and promote economic development. Any community representative can apply.

- Visit www.epa.gov/smartgrowth/cool-connected for more information.

Greening America's Communities: Helps cities and towns envision and implement design strategies for more sustainable communities.

- Visit www.epa.gov/smartgrowth/greening-americas-communities for more information.

Healthy Places for Healthy People: Helps communities create walkable, healthy, economically vibrant places by engaging with their health care facility partners, such as community health centers (including Federally Qualified Health Centers), nonprofit hospitals, and other health care facilities.

- Visit www.epa.gov/smartgrowth/healthy-places-healthy-people for more information.

Local Foods, Local Places: Helps communities develop and implement action plans that promote local foods and downtown revitalization. Representatives of communities anywhere in the U.S. are eligible to apply.

- Visit www.epa.gov/smartgrowth/local-foods-local-places for more information.

Smart Growth Implementation Assistance: Works with public-sector entities that want to incorporate smart growth techniques into their development. EPA's regional staff identifies and selects the communities who are provided assistance.

- Visit www.epa.gov/smartgrowth/smart-growth-implementation-assistance for more information.

Environmental Justice Resources

Environmental Justice Small Grants Program: The Environmental Justice Small Grants Program supports and empowers communities working on solutions to local environmental and public health issues. The program is designed to help communities understand and address exposure to multiple environmental harms and risks.

- Visit www.epa.gov/environmentaljustice/environmental-justice-small-grants-program for more information.

Environmental Education (EE) Grants: Under the Environmental Education Grants Program, EPA seeks grant proposals from eligible applicants to support environmental education projects that promote environmental awareness and stewardship and help provide people with the skills to take responsible actions to protect the environment.

- Visit www.epa.gov/education/environmental-education-ee-grants for more information.



Superfund Redevelopment Initiative

Superfund Redevelopment Initiative: This initiative is a nationally coordinated effort to ensure that EPA and its partners have an effective process and the necessary tools and information to return Superfund hazardous waste sites to productive use.

- Visit www.epa.gov/superfund-redevelopment-initiative for more information.

Agency for Toxic Substances and Disease Registry (ATSDR) Resources

ATSDR Resources: ATSDR provides communities, health educators, healthcare providers, and other health professionals with community environmental health education products. These products are designed to increase environmental health literacy and address the positive and/or negative impact that the environment has on human health.

- Visit www.atsdr.cdc.gov/emes/public for more information.



U.S. EPA Region 7

Land Revitalization Resources

www.epa.gov/aboutepa/region-7-land-revitalization



EPA Office of Brownfields and Land Revitalization / Office of Land and Emergency Management Resources

EPA Land Revitalization Technical Assistance Regional Projects: EPA's Land Revitalization program encourages communities to redevelop and reuse previously contaminated properties sustainably. Use of contractor support provides direct technical assistance to communities that wish to incorporate sustainable and equitable approaches to their locally-driven land revitalization projects.

- Visit www.epa.gov/brownfields/brownfields-and-land-revitalization-iowa-kansas-missouri-nebraska-and-nine-tribal for contacts in Region 7.

Land Revitalization Technical Assistance Area-Wide Planning Regional Projects: EPA's Land Revitalization Program strives to restore land and other natural resources into sustainable community assets that maximize beneficial economic, ecological and social uses, and ensure protection of human health and the environment. Contractor support assists brownfields area-wide planning (BF AWP) grantee communities to help each grantee work through a specific challenge/barrier that is standing in the grantee's way of implementing their area-wide plan and making progress toward their revitalization vision.

- Visit www.epa.gov/brownfields/brownfields-and-land-revitalization-iowa-kansas-missouri-nebraska-and-nine-tribal for contacts in Region 7.

Land Revitalization Program Tools for Communities

PREPARED Workbook: The workbook guides local decision-makers through a step-by-step process for determining how to facilitate reuse of contaminated properties by considering acquisition and non-acquisition property recovery actions.

- Visit www.epa.gov/brownfields/brownfields-and-land-revitalization-connecticut-maine-massachusetts-new-hampshire-rhode#pane-3 for more information.

Community Reuse Property Prioritization Tool: Is designed to help communities prioritize properties based on a specific reuse plan.

- Visit www.epa.gov/land-revitalization/community-reuse-property-prioritization-tool for more information.

Public Infrastructure Coordination Assessment and Planning Tool: The tool is intended to assist communities in identifying opportunities to leverage investments across systems by taking a more coordinated approach to infrastructure management.

- Visit www.epa.gov/sites/production/files/2015-09/infrastructure-coord-tool.xlsx for more information.

Brownfields Stakeholder Forum Kit:

Created to help communities design, plan and conduct forums that bring together groups of stakeholders to focus on a brownfields project.

- Visit www.epa.gov/sites/production/files/2016-09/documents/final_final_stakeholder_forum_toolkit_8.25.2016.pdf for more information.

Brownfield Revitalization in Climate-Vulnerable Areas:

Drafted by EPA's technical assistance team, this outlines nationally applicable examples of relevant regulatory standards, incentives, and guidelines for communities to consider as they update their zoning and subdivision regulations.

- Visit www.epa.gov/land-revitalization/climate-resilience-planning-tool for more information.

On the Road to Reuse: Residential Demolition Bid Specification Development Tool:

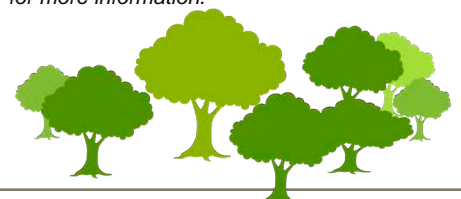
Helps users anticipate environmental issues and concerns with demolition so they can factor them into the planning and procurement process.

- Visit www.epa.gov/sites/production/files/2013-09/documents/road-to-reuse-residential-demolition-bid-specification-201309.pdf for more information.

Deconstruction Rapid Assessment Tool:

This tool enables organizations to triage building stock slated for demolition. It assembles data that can help prioritize structures for deconstruction and salvage.

- Visit www.epa.gov/sites/production/files/2015-07/documents/drat-instructions.pdf for more information.





U.S. EPA Region 7

Land Revitalization Resources

www.epa.gov/aboutepa/region-7-land-revitalization

Legal Resources

Comfort/Status Letters: EPA may issue comfort/status letters to address the following: status of the site; future anticipated actions at the site; available liability protections; reasonable steps that a purchaser should take to stop any ongoing releases and prevent future releases at sites where EPA has this information; and the status of EPA liens.

Ready for Reuse (RfR) Determinations: EPA may issue an RfR Determination to affirm that a Superfund site's conditions are protective of human health and the environment for specific types of uses.

BFPP "Doing Work" Agreements: EPA may enter into a settlement agreement with a Bona Fide Prospective Purchaser (BFPP) who wishes to perform part or all of a cleanup. The agreement provides for EPA oversight and may satisfy part or all of any windfall lien.

Lien Settlements: EPA is willing to enter into negotiations and settlement agreements to resolve lien issues and facilitate reuse.

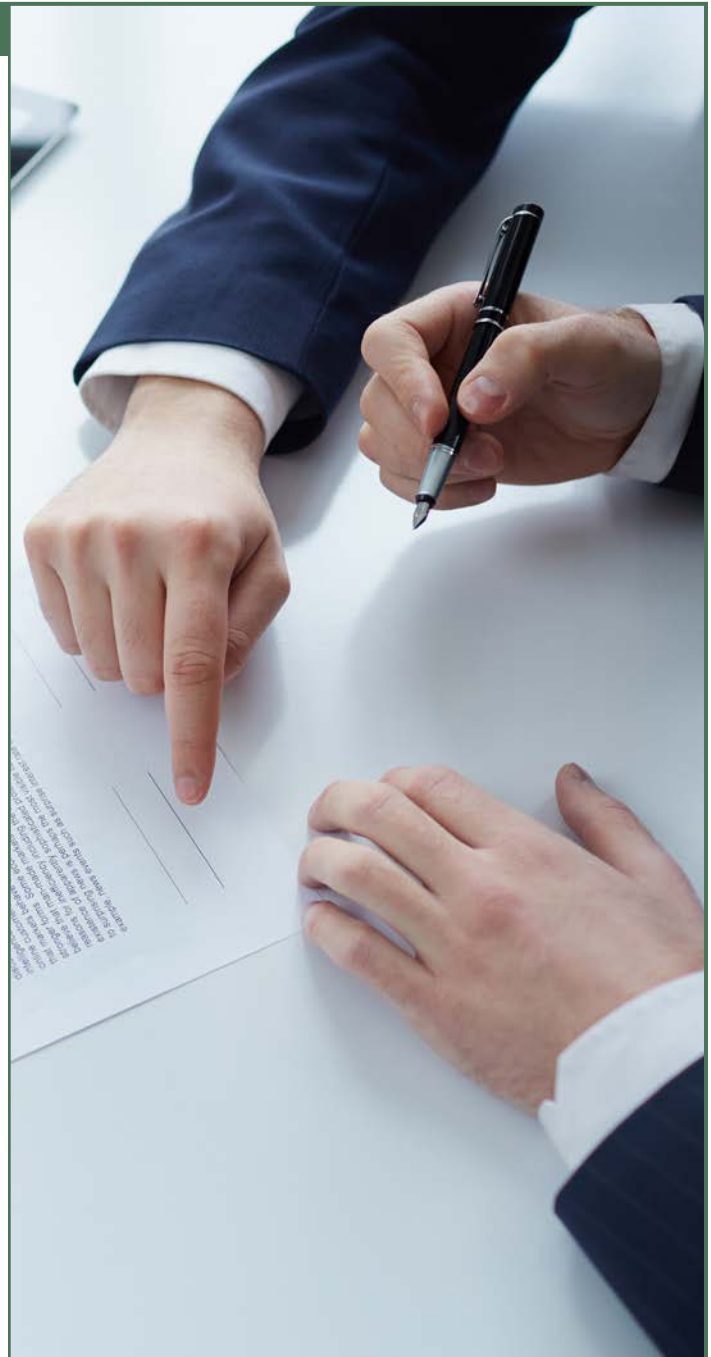
Discussions: EPA Regional staff is available to talk or meet with prospective purchasers, sellers, lenders, and other stakeholders to discuss the issues critical to the successful purchase and reuse of contaminated or potentially contaminated properties. Providing examples of other contaminated or potentially contaminated properties that were successfully redeveloped and are now in reuse can also reassure local citizens and stakeholders about revitalization opportunities.

Local Beneficial Effects Case Studies: Using a site-specific approach, these studies gather information focused on reuse, employment and other beneficial effects. They can obtain detailed information about economic benefits for every company present on a site, in addition to unique economic benefits provided by particular uses, such as alternative energy. The studies are on EPA's Superfund Redevelopment Initiative website at www.epa.gov/superfund-redevelopment-initiative/redevelopment-economics-superfund-sites#local

Partial Deletions: While total cleanup of a site may take many years, many sites on EPA's National Priorities List (NPL) include portions that have been cleaned up and may be available for productive use. These portions may be partially deleted from the NPL if EPA makes a determination that no further cleanup work is required, the state concurs, and necessary institutional controls are in place. Any person, including individuals, businesses, entities, states, local governments, and other federal agencies, may submit a petition requesting a partial deletion. EPA will evaluate the request and make a determination whether to proceed. A partial deletion of a portion of a Superfund site from the NPL can help to increase the site's marketability. **PLEASE NOTE:** EPA Superfund liens may still apply to the deleted parcel. More information on partial deletions is available on EPA's NPL Deletion Guidance and Policy page at www.epa.gov/superfund/superfund-npl-deletion-guidance-and-policy

More information about many of the tools listed above is available on these EPA pages:

- Enforcement Tools that Address Liability Concerns for Brownfields and Land Revitalization - www.epa.gov/enforcement/enforcement-tools-address-liability-concerns-brownfields-and-land-revitalization
- Landowner Liability Protections - www.epa.gov/enforcement/landowner-liability-protections



Region 7 Contacts

For general questions contact:

David Doyle, U.S. EPA Region 7
Phone: 913-551-7667
Email: doyle.david@epa.gov

For legal questions contact:

Kristen Nazar, U.S. EPA Region 7
Phone: 913-551-7450
Email: nazar.kristen@epa.gov