

# East Palestine

## TRAIN DERAILMENT RESPONSE

Serving East Palestine, Negley, Darlington  
and surrounding communities

# NEWSLETTER

September 19, 2023



A GeoProbe taking samples in Car Scrapping Area 3 as part of the full site characterization effort.

## PROGRESS MADE

### Full Site Characterization Begins

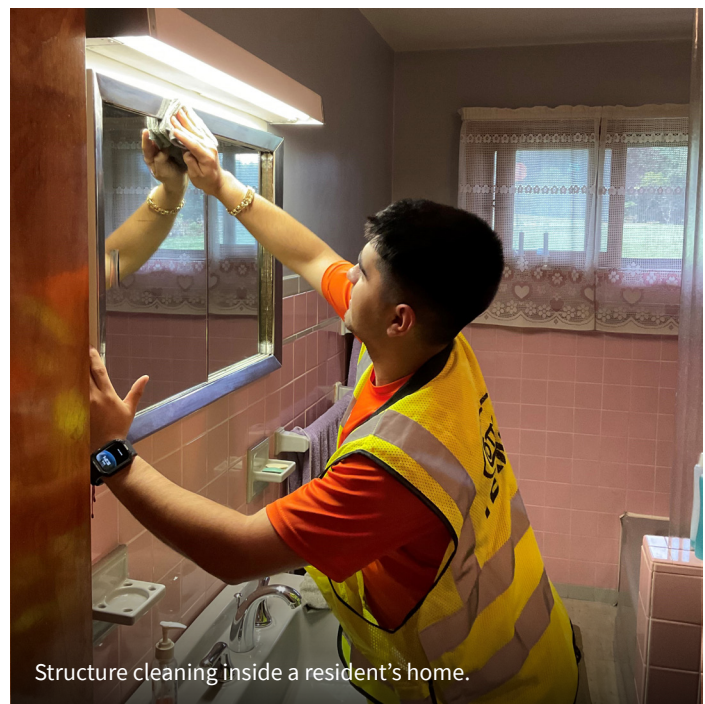
EPA, in conjunction with the Unified Command for the train derailment response, has approved the workplan for the next phase of cleanup. The “soil characterization” workplan details the comprehensive sampling as the cleanup enters the last stages of excavation. Sampling has begun and is intended to be a “double-check” to ensure that the cleanup has been fully successful and that no contamination has spread during response activities. This does not indicate a concern that contamination from the derailment may have affected a larger area. It also ensures that areas previously cleaned up are re-evaluated to confirm completeness. If residual contamination is discovered through these efforts, EPA will direct further cleanup actions as needed. The workplan and additional information are available on the EPA website at: [epa.gov/east-palestine-oh-train-derailment/full-characterization-workplan](https://epa.gov/east-palestine-oh-train-derailment/full-characterization-workplan)

### Completed Excavation of Car Scrapping Area 3

The soil excavation and backfilling work at Car Scrapping Area 3 has been completed. Backfilling occurs after sampling results are used to clear excavated grids, showing that contaminated soil was removed. The remaining work to be done in Car Scrapping Area 3 is restoring a stormwater culvert.

### Structure Cleanings Are Ongoing

Many residents have taken advantage of the structure cleaning program, which began in August to address concerns about dust generated by the cleanup work. 26 homes have been cleaned as part of the program as of Saturday, September 16.



Structure cleaning inside a resident's home.

### Coming soon:

EPA will post a map detailing site work locations. For updates, see: [epa.gov/east-palestine-oh-train-derailment](https://epa.gov/east-palestine-oh-train-derailment)

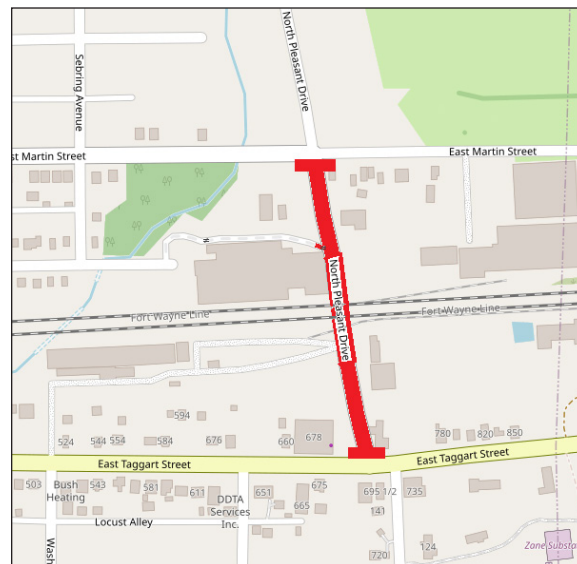
# A LOOK AHEAD

## AT THE DERAILMENT SITE

- Sitewide characterization will continue in areas near the derailment location where equipment, materials, and debris were handled as part of the overall emergency response.
- Sampling results from the on-site wastewater treatment system show treated wastewater can be disposed of off-site as non-hazardous. Each tank of treated wastewater is sampled before being shipped off-site.
- Excavations in the South Ditch and Car Scrapping Area 4 will continue.
- Shipments of excavated soil for off-site disposal will continue.
- Some shipments of untreated, hazardous wastewater will continue.

## IN THE GREATER COMMUNITY

- **Upcoming road closure:**  
Beginning on September 25, North Pleasant Drive will be closed from East Martin to Taggart Street for approximately 10 days. The closure will allow for sheet piling installation and the excavation of contaminated soil underneath the road. Trucks that currently use North Pleasant Drive for off-site shipments will be re-routed down East Martin to the James Street railroad crossing. Area residents may notice increased truck traffic along the temporary route. The road will be restored once the work is completed.
- Taggart Street remains closed to the public.
- Indoor cleaning of eligible homes and businesses and pre-cleaning interviews will continue.
- Stationary and mobile air monitoring continues around the community and within the derailment site.



Pleasant Drive closure area in red.

## COMMUNITY CORNER

### Upcoming community canvassing

Volunteers with local churches and The Way Station will be going door-to-door in East Palestine on October 12 and 13 to check in with residents and discuss available resources related to the train derailment response. Be on the lookout for more information about this canvassing effort and how you can volunteer to help!

**EP  
STRONG**

Teams of community members are going door-to-door to make sure you are connected!

## DID YOU KNOW?

### Ecological Assessments in Surface Waters

Ohio EPA is overseeing an assessment of surface water that may have been affected by the train derailment. Biological sampling assesses fish, habitat, macroinvertebrate and native mussel communities in surface waters. Fish and habitat sampling is complete in Leslie Run and will continue in Bull Creek and North Fork Little Beaver Creek. Macroinvertebrate sampling efforts have started and will continue through the end of September. Mussel surveys in Bull Creek and North Fork Little Beaver Creek are dependent on water levels which remain high after recent rain events.



Sorting fish as part of sampling effort along North Fork Little Beaver Creek.



(330) 775-6517



R5\_eastpalestine@epa.gov



epa.gov/east-palestine-oh-train-derailment

## TOP 3 QUESTIONS OF THE WEEK

### 01 What is the status of the sampling data from Leslie Run and Sulphur Run?

Sediment sampling in Leslie and Sulphur Run is complete. The data generated by this work are being evaluated and compared to human health and ecological risk threshold criteria. That will lead to a determination about whether additional actions will be required and what those actions should be.

### 02 How is the sediment sampling in Leslie and Sulphur Run different than the eco-assessment?

The main purpose of sediment sampling is to understand the extent of sediment contamination in Sulphur and Leslie Run. The eco-assessment, however, focuses on the potential uptake of contaminants in fish and other organisms.

### 03 Where is the treated wastewater going?

The wastewater treatment system removes derailment contaminants using several steps, including sedimentation and filtration. The treated wastewater is then tested to verify vinyl chloride is below the drinking water standard. Once treated, water is sent to facilities certified to accept non-hazardous wastewater and that are regulated by federal and state environmental agencies.

## SITE STATUS CHECK

As of September 15



#### NORTH TRACK:

In operation

#### SOUTH TRACK:

In operation



#### LESLIE RUN:

Stream monitoring is ongoing

#### SULPHUR RUN:

Stream monitoring is ongoing



## SAFETY MINUTE



It's back to school time! As the fall begins, it's a good idea to review basic school bus safety tips with your family.

When you're driving, remember to always stop for school buses when their red lights are flashing and the stop arm opens, which indicates that children are getting on or off the bus.

Talk about bus safety with your kids and remind them to play it SAFE:

- Stay at least ten feet from the curb.
- Always wait for the bus to completely stop before boarding.
- Face forward when seated.
- Exit the bus only after it has stopped completely.

**Learn more tips from the National Highway Traffic Safety Administration**

## 33.4 million

est. gallons of wastewater shipped offsite



## 115,797

est. tons of solid waste shipped offsite



(330) 775-6517



R5\_eastpalestine@epa.gov



[epa.gov/east-palestine-oh-train-derailment](https://epa.gov/east-palestine-oh-train-derailment)



## KEY COMMUNITY RESOURCES

### East Palestine Clinic

- Location: 139 N. Walnut St., East Palestine, OH 44413
- Hours: Monday-Friday 9:00 a.m. - 5:00 p.m.  
Same day appointments available
- Phone: 330-362-4920

### EPA Welcome Center:

- Location: 25 N. Market St., East Palestine OH 44413
- Hours: Monday-Friday 9:00 a.m. - 6:00 p.m., Saturday  
10:00 a.m. - 4:00 p.m., Sunday Closed
- Phone: 330-775-6517

### Norfolk Southern Family Assistance Center:

- Location: 191 E. Rebecca St., East Palestine, OH 44413
- Hours: Monday, Tuesday, Thursday, Friday 10:00  
a.m. - 6:30 p.m., Wednesday 12:00 p.m. - 8:00 p.m.,  
Saturday and Sunday Closed
- Phone: 800-230-7049

## STAY INFORMED

EPA continues to release short videos called “This Week at E.P.” to share upcoming work at the site. You can find them on our website under “Photos & Videos” or by scanning the QR code.



## ABOUT THIS PUBLICATION

This newsletter is developed through a joint effort of state and federal agencies and community organizations. If you would like more information about topics discussed, please visit [epa.gov/east-palestine-oh-train-derailment](https://epa.gov/east-palestine-oh-train-derailment) or call EPA's Information Line at **330-775-6517**.



**SCAN ME** for a list of additional resources

EPA Welcome Center - EPTD  
25 N. Market St.  
East Palestine, OH 44413