

Table 1  
 Community Continuous Air Monitoring Results  
 East Palestine Derailment Site  
 East Palestine, Columbiana County, Ohio

**Monitoring Period: 10/17/2023 00:00 through 10/18/2023 10:02**

Air Monitoring Instrument: Serial Number	Analyte	Screening Level <sup>1</sup>	Screening Level Exceeded?	8-hour Period Concentration Range	Average of All 8-hour Periods
8533230504	PM <sub>2.5</sub> (mg/m <sup>3</sup> )	0.035 (mg/m <sup>3</sup> )	No	0.007 to 0.018	0.013
	PM <sub>10</sub> (mg/m <sup>3</sup> )	0.070 (mg/m <sup>3</sup> )	No	0.008 to 0.018	0.013
W01B00002220	VOC (ppm)	0.5 (ppm)	No	0.00 to 0.02	0.01

**Notes:**

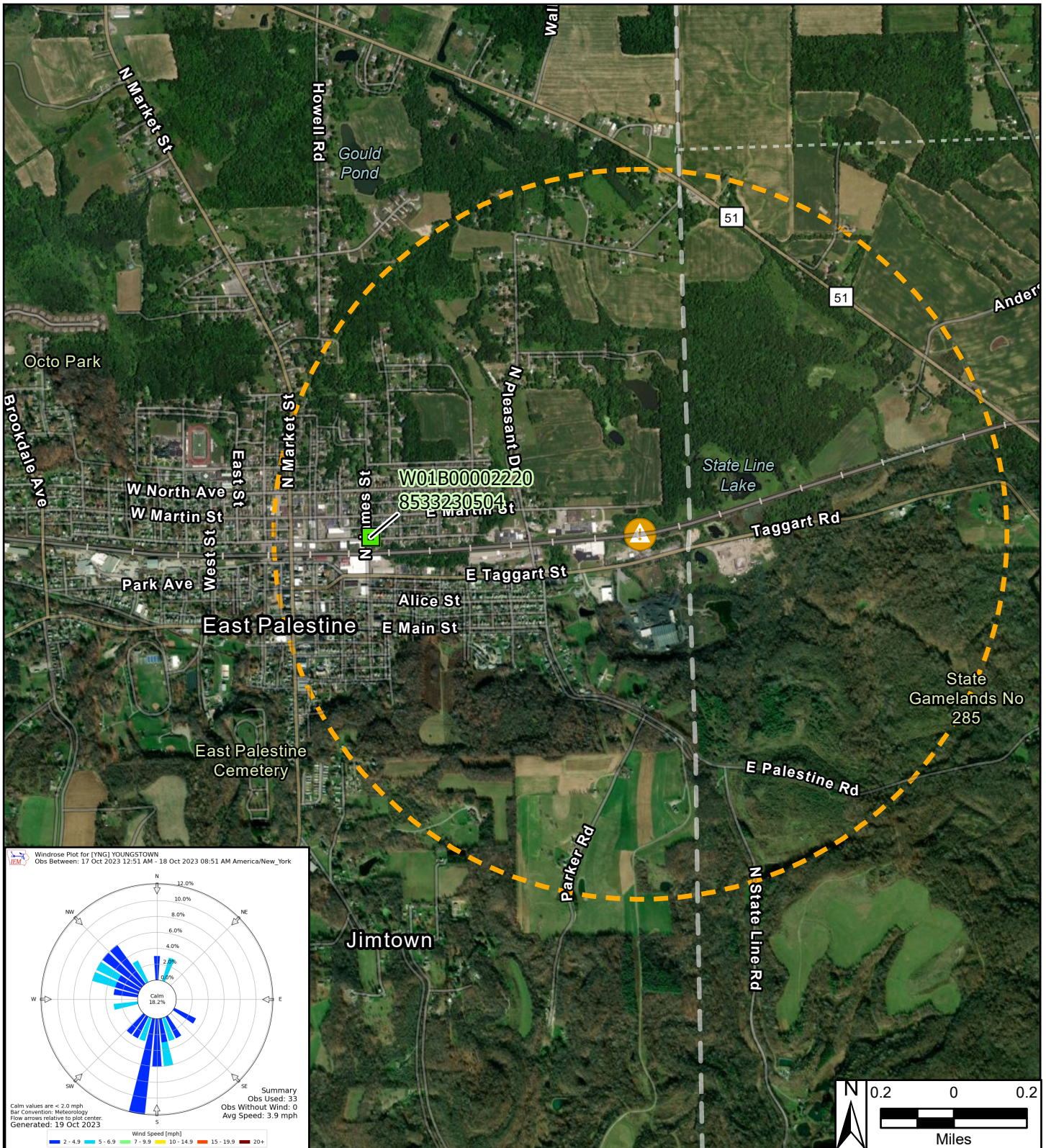
<sup>1</sup> Site-Specific Screening Levels stated in the Tetra Tech Air Monitoring and Sampling Plan. Screening levels were modified on March 16, 2023 to reflect updated operation procedures on when to apply mitigation methods to reduce dust. Action levels set by health departments have not changed.

Air monitoring measurements have been averaged over a 8-hour time period and summarized above.  
 Air monitoring is not performed during inclement weather conditions/rain and thunderstorms.

**Abbreviations:**

- mg/m<sup>3</sup> - milligrams per meter cubed
- PM<sub>2.5</sub> - Particulate Matter, diameter 2.5 micrometers and smaller
- PM<sub>10</sub> - Particulate Matter, diameter 10 micrometers and smaller
- ppm - Parts per million
- S/N - Serial number
- VOC - Volatile organic compound

We are in the process of ensuring this document is accessible to all audiences. If you need assistance accessing this document, or any materials on the EPA East Palestine, Ohio emergency response webpages, please contact the Region 5 Public Information Officer on-call [r5\\_eastpalestine@epa.gov](mailto:r5_eastpalestine@epa.gov)



- Legend**
- Continuous Air Monitoring Locations with DustTrak
  - Continuous Air Monitoring Locations
  - One Mile Radius
  - ▲ Derailment Location

East Palestine Derailment ER Site  
 East Palestine, Columbiana County, OH 44413

**Figure 1**  
**Continuous Air Monitoring**  
**Community Stations**

**TETRA TECH**

Prepared For: EPA      Prepared By: Tetra Tech Inc.