



***EPA WaterTA:
Changing the Odds for Communities***

Bev Vazquez,
Water Infrastructure & Resiliency Finance Center

EPA WaterTA Supports Communities to:



Identify water challenges



Plan for solutions



Increase community engagement



Build technical, financial, managerial capacity



Develop application materials to access water infrastructure funding

CLOSING THE WASTEWATER GAP

U.S. ENVIRONMENTAL
PROTECTION AGENCY

U.S. DEPARTMENT
OF AGRICULTURE

BIPARTISAN INFRASTRUCTURE LAW



Nameplate for the first person on the left.

Nameplate for the second person from the left.

Nameplate for the third person from the left.

Nameplate for the fourth person from the left.

Nameplate for the fifth person from the left.

Nameplate for the sixth person from the left.

One WaterTA Initiative, Multiple WaterTA Programs

BIL Funded OW WaterTA		Base Funded OW WaterTA			
<p>BIL Environmental Finance Centers (EFCs) (Regional and National)</p> <p><i>\$100 million funded</i></p>	<p>BIL Pilots</p> <p><i>Closing America's Wastewater Access Gap</i></p> <p><i>Lead Service Line Replacement Accelerators</i></p> <p><i>H2O Community Solutions Teams</i></p>	<p>Multi-Media EFCs</p> <p><i>Capacity for up to \$52 million</i></p>	<p>OWM Rural Small Tribal Wastewater (AWIA)</p> <p><i>FY20 \$12 million (awarded; 3 grantees)</i></p> <p><i>FY21 \$18 million</i></p> <p><i>FY22 \$20 million</i></p> <p><i>FY23 \$27 million (next awards Summer '23)</i></p>	<p>OGWDW Training and Technical Assistance for Small Systems</p> <p><i>FY21 \$21.7 million (awarded; 2 grantees)</i></p> <p><i>FY22 \$25.7 million (selections anticipated to be awarded in Summer 2023)</i></p>	<p>Other OW WaterTA</p> <p><i>See online WaterTA programs factsheet, Water Technical Assistance: Ensuring Equitable Access to Water Infrastructure Funding</i></p>

Creating Resilient Water Utilities (CRWU)

Provides training and resources to support water utilities as they pursue climate adaptation and resiliency strategies

epa.gov/crwu



Request Assistance

Request support by filling out simple online [WaterTA Request Form](#)

Learn More

Please visit epa.gov/waterTA for more information



- Environmental Topics ▾
- Laws & Regulations ▾
- Report a Violation ▾
- About EPA ▾

Water Infrastructure

[CONTACT US](#)

Water Technical Assistance Request Form

First name

Last name

If you would like a response, please include your email address and/or phone number.

Email

Phone number

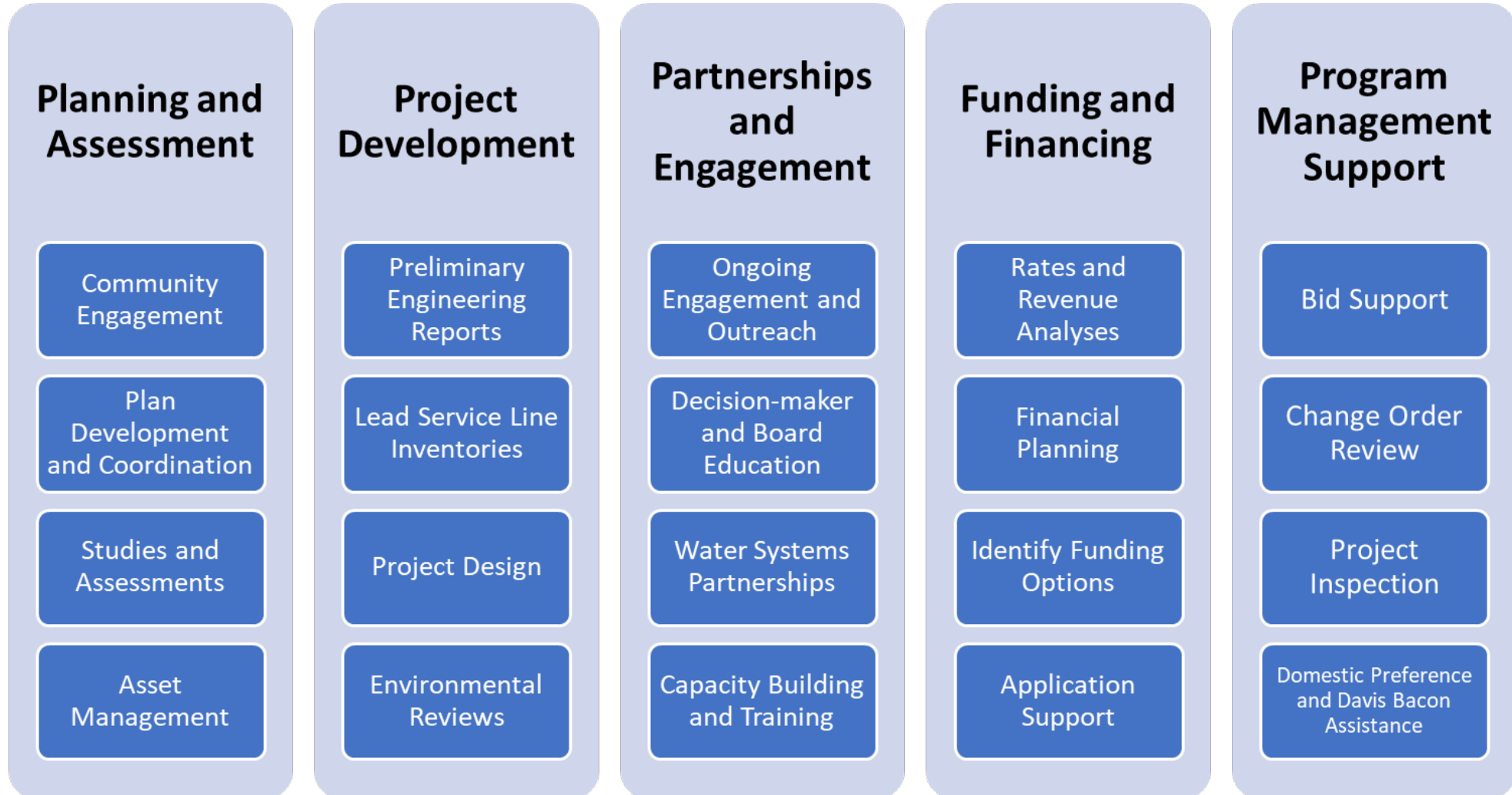
Please format your phone number as (XXX) XXX-XXXX



Looking Forward

2024 TA Opportunities

Summary of Possible WaterTA Services





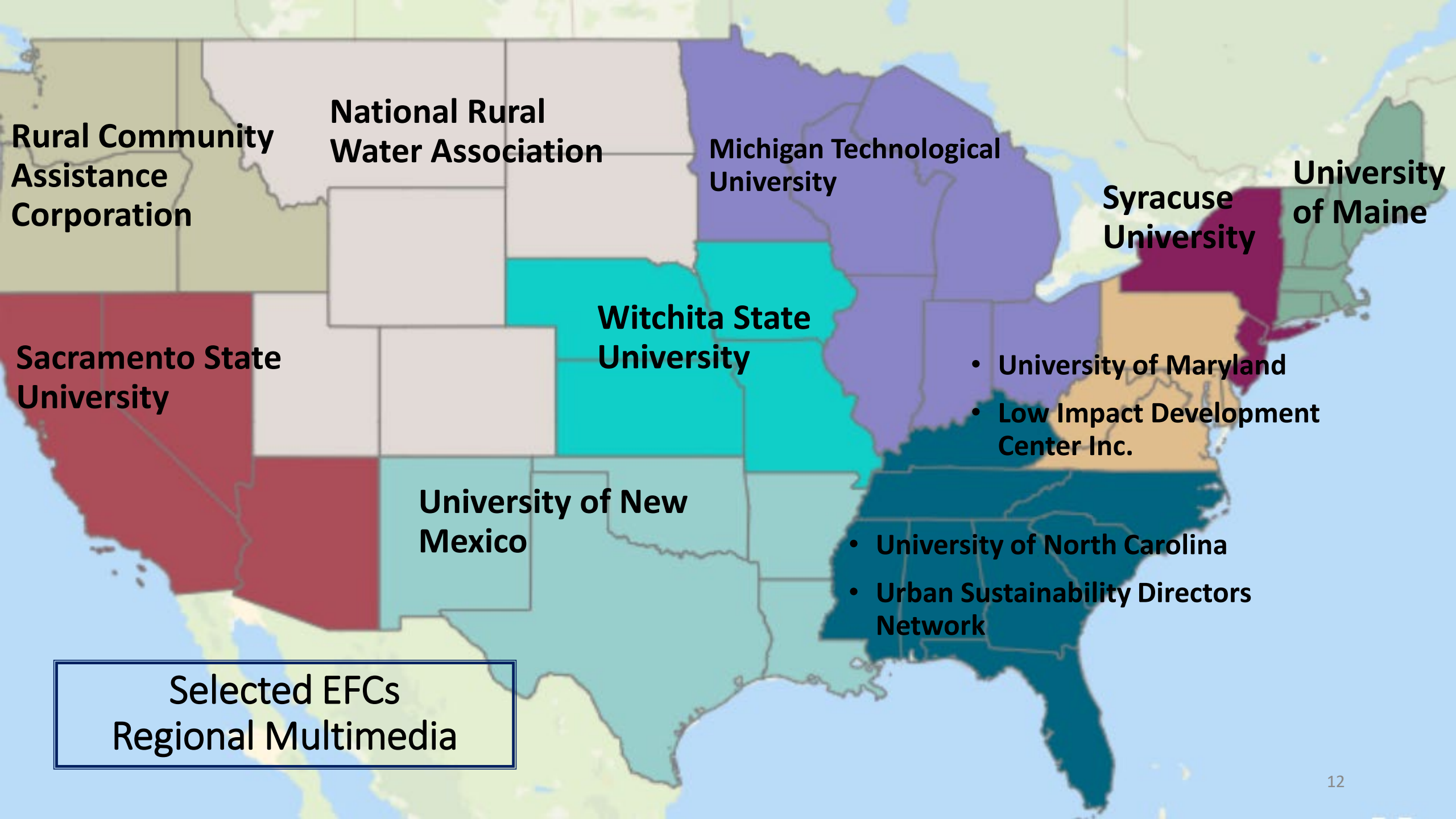
Environmental Finance Centers (EFCs)

What is the EFC Program?

- **Largest WaterTA Program:** Environmental Finance Centers (EFCs) are EPA's largest program for WaterTA to communities.
- **More EFCs, More Types:** EPA reimagined its EFC program in 2022 to better provide BIL TA services to more communities.
- **Historic Level of Funding:** \$100 million BIL funding secured for EFC BIL WaterTA (with \$52 million in additional capacity available for EFC multimedia TA)

What is the EFC Program?

- **Multimedia EFCs:** Traditional work of prior EFC grant programs, providing TA for multiple types of media (water, air, land, etc.)
- **Regional BIL EFCs:** Funded by SRF administrative set-asides to provide clean water and drinking water TA services to support community access to BIL funding
- **National BIL EFCs:** Funded by SRF administrative set-asides to provide TA services and to support/fill gaps Regional BIL EFCs



Rural Community Assistance Corporation

National Rural Water Association

Michigan Technological University

Syracuse University

University of Maine

Sacramento State University

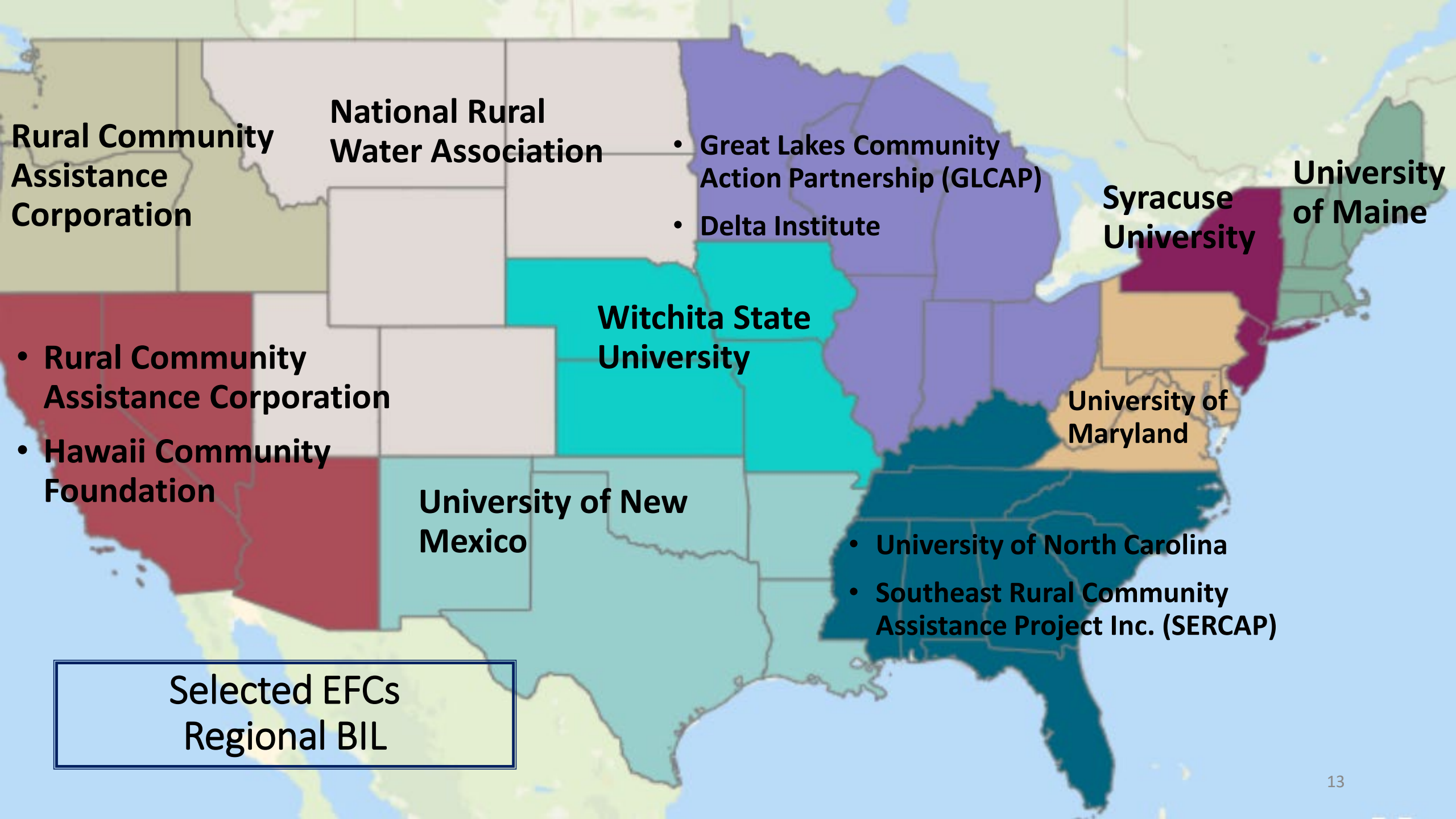
Wichita State University

- University of Maryland
- Low Impact Development Center Inc.

University of New Mexico

- University of North Carolina
- Urban Sustainability Directors Network

**Selected EFCs
Regional Multimedia**



Rural Community Assistance Corporation

National Rural Water Association

- Great Lakes Community Action Partnership (GLCAP)
- Delta Institute

Syracuse University

University of Maine

- Rural Community Assistance Corporation
- Hawaii Community Foundation

Wichita State University

University of Maryland

University of New Mexico

- University of North Carolina
- Southeast Rural Community Assistance Project Inc. (SERCAP)

Selected EFCs Regional BIL

A map of the United States with various states highlighted in different colors. The highlighted regions include California (red), Texas (teal), the central US (light blue), the Midwest (purple), the Southeast (dark teal), and the Northeast (orange and maroon).

Selected EFCs National BIL

- Rural Community Assistance Partnership (RCAP)
- Environmental Policy Innovation Center (EPIC)
- U.S. Water Alliance
- Moonshot Missions

Thank you!

Bev Vazquez (they/them)

Water Infrastructure & Resiliency Finance Center

vazquez.bev@epa.gov

Water Infrastructure & Resiliency Finance Center

waterfinancecenter@epa.gov