



BROWNFIELDS FY24 GRANT ANNOUNCEMENT WEBINAR

Pacific Southwest Region 9 Communities

Speaker Name	Agency
Brooklyn James	U.S. EPA, Region 9 Brownfields Program

WEBINAR INFORMATION

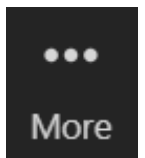
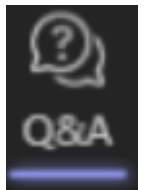
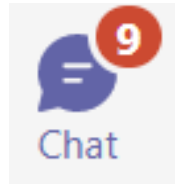


Questions

- Type all questions in the **meeting chat or Q&A**
- We will have a Q&A session at the end of the presentation
- Region 9 Brownfields Team contact info provided in slides

Presentation Accessibility

- Recorded webinar and slides will be posted on our [Region 9 Brownfields website](#)
- Enable closed captioning under the "More" button (three dots) in the top bar; click **Turn on Captions**



Language and speech >

Turn on live captions

POLL QUESTIONS



What type of organization
are you with?

What is your experience
level with brownfields?

EPA BROWNFIELDS PROGRAM



Brownfield: a property, the expansion, redevelopment, or reuse of which may be complicated by the **presence** or **potential presence** of a hazardous substance, pollutant, or contaminant.

Pre-Cleanup



Post-Cleanup



**Countless
reuse options!**



BEFORE: Auto Repair and Machine Shop



AFTER: Mixed-use Affordable Housing and Commercial Development

AFFORDABLE HOUSING



ENVIRONMENTALLY FRIENDLY TRANSPORTATION

RURAL AND TRIBAL HEALTH



COMMUNITY PARKS AND OPEN SPACE



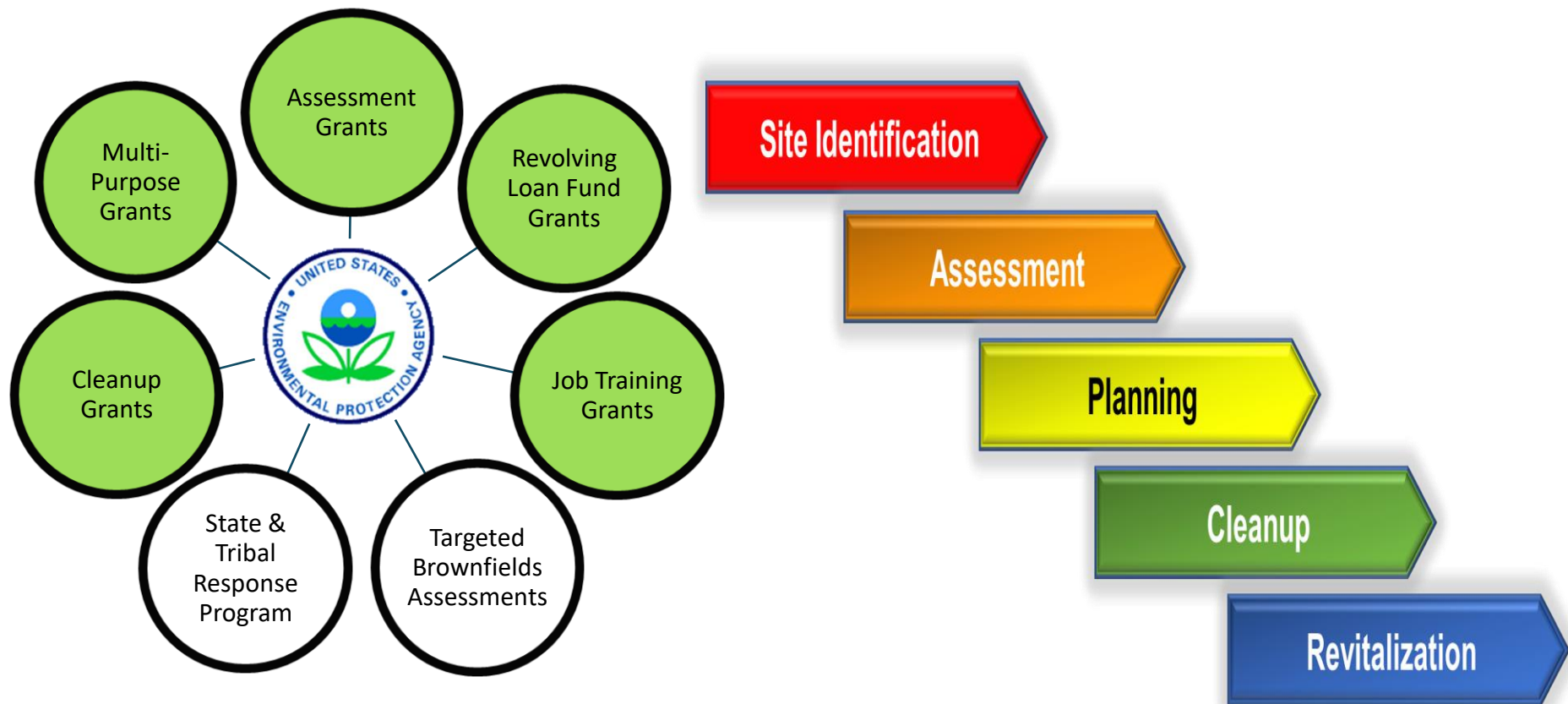


RENEWABLE ENERGY

EPA BROWNFIELDS PROGRAM



Funding for all steps of the redevelopment process!



Note the Bipartisan Infrastructure Law has added \$1.5B to EPA's Brownfields Program over next 4 years

COMMUNITY REDEVELOPMENT



- Community outreach and visioning to gauge support, identify potential sites, communicate with landowners to gauge interest,
- Conceptual/preliminary site design
- Complete environmental assessments, cleanup planning including oversight costs, site remediation
- Conduct financial modeling and explore project co-benefits (tax income, local economic development, job availability and creation, etc.)
- Purchase environmental insurance
- Conduct infrastructure analyses
- Develop resource roadmap to identify redevelopment capital needs and potential funding sources



RESOURCES



Stay Updated!

Join U.S. EPA's Brownfields Listserv, link at www.epa.gov/brownfields

Check the [Brownfields Program Policy Changes](#) site directly

See [OBLR's Webinars](#)

EPA BROWNFIELDS PROGRAM FY24 GRANT FUNDING OPPORTUNITIES



Assessment: allows for environmental assessment, planning, and community engagement from \$500K to \$2M

Cleanup: for remediation offered \$500K - \$5M

Multipurpose: for assessment and cleanup funding up to \$1M



Applications Due:
November 13th

GENERAL BACKGROUND



- Environmental Site Assessments (ESA) (ASTM Standard):
 - Phase I
 - Phase II
- Cleanup Planning: [Analysis of Brownfields Cleanup Alternatives](#) (ABCA)
- Site eligibility: Applicant must not be liable for contamination
- Privately and publicly held sites can be assessed
- Budgets no longer need to distinguish between hazardous substances or petroleum funding

ELIGIBLE ENTITIES



States

Tribes

**Non-Profits
501(c)(3)**

**General Purpose
Unit of Local
Government**

Ex: City, county, school district,
local public authority, regional
gov entity, special district

**Qualified
Community
Development
Entity**

GRANT FUNDING OVERVIEW



Grant Type/Ranking List	Max per Grant	Estimated Awards	BIL \$	Regular \$
Multipurpose	\$1,000,000	20.00		\$20,000,000
Assessment (State/Tribal Level)	\$2,000,000	25.00	\$50,000,000	
Assessment Coalitions	\$1,500,000	26.67		\$40,000,000
Assessment (CW) - New	\$500,000	30.00		\$15,000,000
Assessment (CW) - Existing	\$500,000	30.00		\$15,000,000
Cleanup	\$500,000	40.00	\$20,000,000	
Cleanup	\$2,000,000	17.50	\$35,000,000	
Cleanup	\$5,000,000	8.00	\$40,000,000	
		197.17	\$145,000,000	\$90,000,000
			\$235,000,000	

Amounts are subject to change

COMMUNITY-WIDE ASSESSMENT GRANTS



- **Activities:** Inventory, Phase I/II assessments, community outreach, cleanup and redevelopment planning
- **Length:** 4 years
- **Award Amount:**
 - Community-wide: \$500,000
 - Site-specific: not available
- **Match:** N/A



COMMUNITY-WIDE ASSESSMENT GRANTS: STATES AND TRIBES

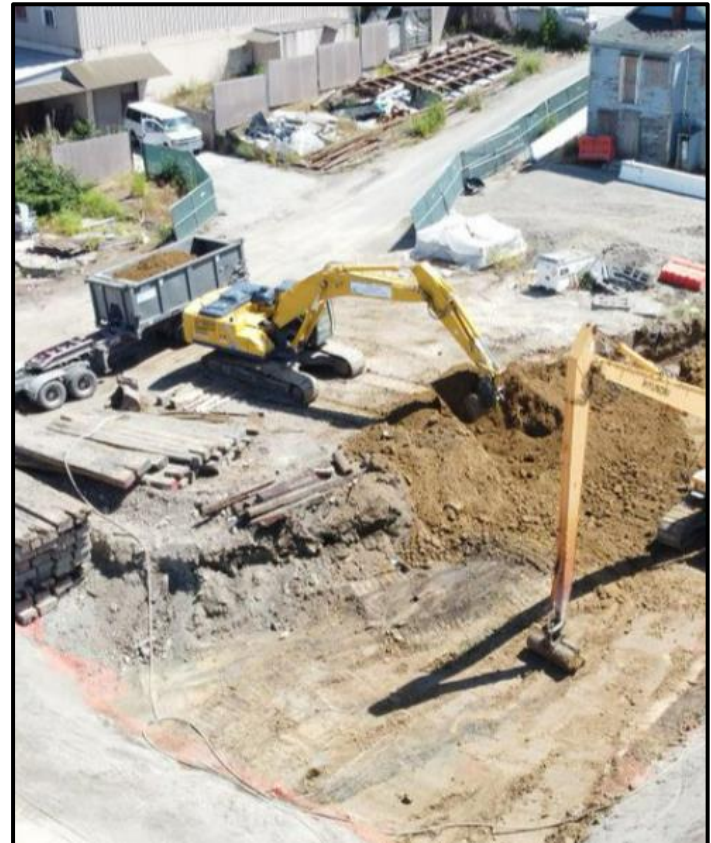


- **Activities:** Inventory, assessment, community outreach, cleanup and redevelopment planning geared towards states and tribes
- **Length:** 5 years
- **Award Amount:** Up to \$2M
- **Match:** N/A

ASSESSMENT COALITION GRANT



- **Activities:** Inventory, Phase I/II assessments, community outreach, cleanup and redevelopment planning
- **Requirement:** Must have at least 2 partners
- **Eligible Entities:** Must be a state, tribe, regional council or a **group** of general-purpose units of local government
- **Length:** 4 years
- **Funding:** Up to \$1.5M*
- **Match:** N/A



* Change from FY23 guidelines

REDEVELOPMENT PLANNING



Redevelopment planning activities are eligible under Assessment Grants:

- Site Reuse Assessment and Visioning
- Market evaluation
- Infrastructure Evaluation
- Land Use Assessment
- Preliminary Site Design
- Site Disposition Strategy
- Development of area-wide plan
- Site Revitalization Planning
- Resource Roadmap/Capital Stacking

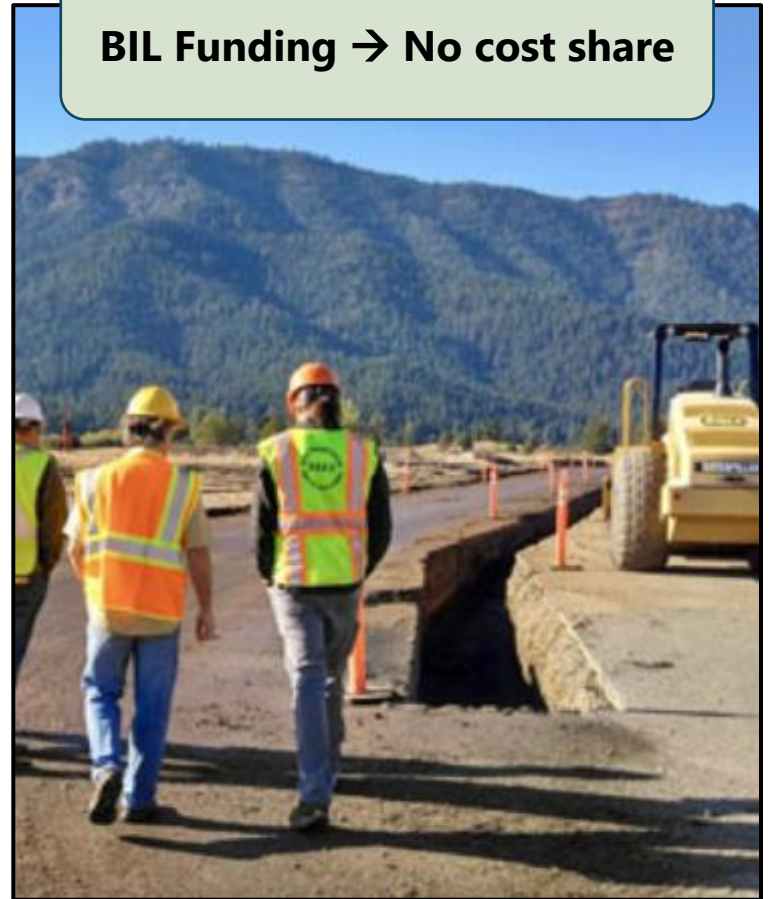


CLEANUP GRANTS



- **Activities:** Site cleanup, reuse planning, community involvement, regulatory oversight fees
- **Requirements**
 - Site ownership
 - Completed phase II or site investigation report
 - Community Notification
- **Funding:**
 - Up to \$500K
 - Up to \$2M *
 - Up to \$5M *
- **Length:** 4 years
- **Match:** N/A

BIL Funding → No cost share



* Change from FY23 guidelines

REVOLVING LOAN FUND (RLF) GRANT



- **Activities:** Loans and subgrants (\$500K limit per subgrant *) for site remediation; privately-held sites can be eligible for loans; more details [here](#). Recipients need to be able to effectively administer loans and manage program income

Not offered in FY24 grant cycle!

- At least 50% of funding must go to loans
- **Funding:** Up to \$1,000,000; can receive supplemental funding over time
- **Length:** up to 5 years
- **Match:** N/A *

BIL Funding → No cost share



* Change from FY23 guidelines

MULTIPURPOSE GRANT



- **Activities:** Inventories, prioritizing sites, community engagement activities, Phase II assessment, cleanup and reuse plans, cleanup activities, and overall plans for revitalization. More details [here](#)
- **Funding:** up to \$1M*
- **Requirements**
 - One Phase II environmental site assessment;
 - One brownfield site cleanup; and
 - A revitalization plan (includes a feasible reuse strategy for one or more brownfield sites)
- **Length:** up to 5 years
- **Match:** N/A



* Change from FY23 guidelines

FY24 Eligibility Chart for Multiple Applications

I AM APPLYING FOR		In FY24, can I also apply for...?					
		Multipurpose Grant	Community-wide Assessment Grants for States and Tribes	Community-wide Assessment Grant	Assessment Coalition Grant (Lead)	Non-Lead Member of an Assessment Coalition	Cleanup Grant
Multipurpose Grant	→	N/A	No	No	No	No	No
Community-wide Assessment Grants for States and Tribes	→	No	N/A	No	No	No	Yes
Community-wide Assessment Grant	→	No	No	N/A	No	No	Yes
Assessment Coalition Grant (Lead)	→	No	No	No	N/A	No	Yes
Non-Lead Member of an Assessment Coalition	→	No	No	No	No	N/A	No
Cleanup Grant	→	No	Yes (Choose One Type)			No	N/A

FY24 MAC FAQs DOCUMENT



FY24 Frequently Asked Questions

TARGETED BROWNFIELDS ASSESSMENTS



- **Activities:** EPA provides free contractor assistance to perform Phase I/II site assessments and data evaluation
- **Application:** Open year-round, [online application](#)
- **Requirements:**
 - Must have a redevelopment in mind for property
 - Reuse must serve public good
 - Preferably in an underserved community



POLL QUESTION



Given what you have learned so far, are you considering applying for a grant?

PROPOSAL PREPARATION



**Read Entire
Guidelines**



**Review
FAQs**



**Address all
requested criteria**



**Create Quality
Responses**



**Use Proposal
Checklists**



PROPOSAL PRESENTATION



Project Development: Prepare proposal as if you're selling it to someone, make it a compelling story.



Meaningful Community Engagement: Involve stakeholders early and use creative outreach methods.



What is the Big Picture: Provide details on the reuse and how it will create change.

FORMATTING TIPS



- Use active tone
- Avoid: *is considering, may be, intends to*
- Short, direct sentences or organize into bullet points
- Be direct – don't make the reader guess
- Minimize/explain acronyms and vernacular
- Use Tables, with light shading and/or different font
- Use visual variety – *italics*, underline, **bold**

APPLICATION SUBMISSION



- Be ready to submit at least one week BEFORE deadline!
- Use the correct "Unique Entity Identifier" or UEI (no longer DUNS!) for your organization *
- **Register in www.sam.gov now!!!**
- Even if already registered in www.sam.gov, make sure the account is active and will be active by the deadline
- The account must be renewed annually by the E-Business Point of Contact (E-Biz POC).
- Applications are due in **grants.gov**



PROPOSAL PREPARATION SUPPORT



Center for Creative Land Recycling (CCLR)

- Will review draft proposals and provide valuable feedback
- Get proposals to them ASAP, multiple reviews are possible (time permitting)
- Go to cclr.org or email Ignacio Dayrit (Director of Programs) at ignacio.dayrit@cclr.org

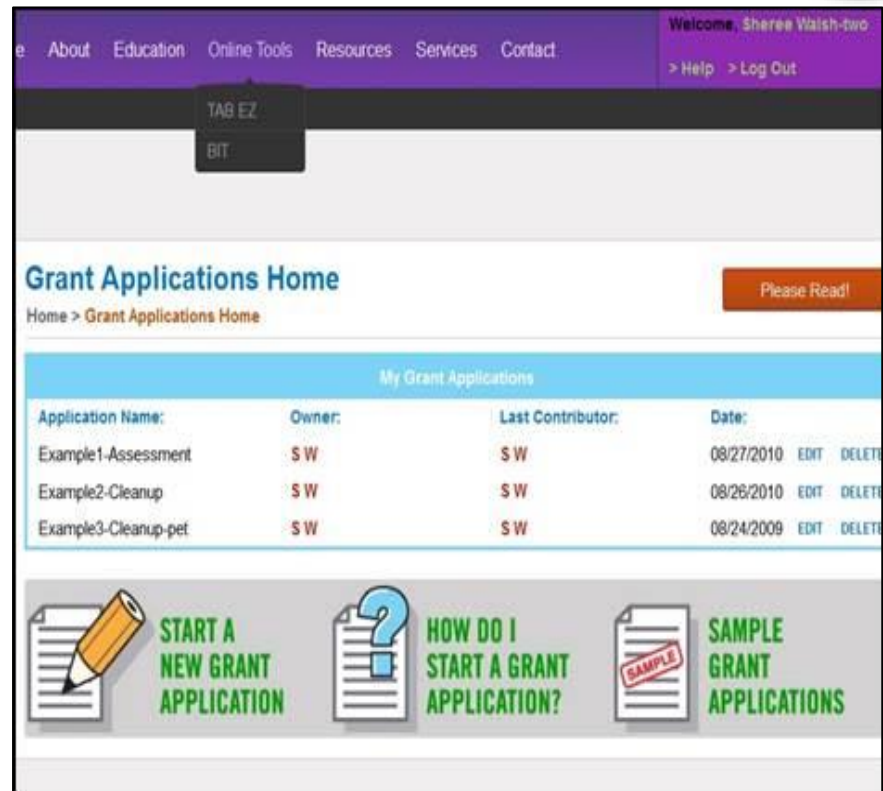


PROPOSAL PREPARATION SUPPORT



Kansas State University's Technical Assistance to Brownfields (TAB) Program

- Access successful proposals
- Free tool to help prepare proposals
- 24/7 Access and password protected
- Export proposals to Word or PDF



Go to www.tabez.org and click on Online Tools and "TAB EZ"

PROPOSAL CONTENT & FORMAT



Narrative Information Sheet

- Place information on your organization's letterhead.
- 2 pages, single spaced
- State Acknowledgement Letter (does not count toward pg. limit.)

Narrative

- Page limit varies by year and grant type.
- Excess pages will be removed and not reviewed.
- Review FY24 solicitation for any potential changes.

Required Attachments

- Limit attachments to required/relevant documents (i.e., threshold criteria, documentation of leveraged resources, etc.).
- No photos or maps.

NARRATIVE RANKING CRITERIA



1

Project Area
Description &
Plans for
Revitalization

2

Community
Need &
Community
Engagement

3

Task
Descriptions,
Cost Estimates
& Measuring
Progress

4

Programmatic
Capability &
Past
Performance

1. PROJECT AREA AND PLANS FOR REVITALIZATION



Target Area

Identify and describe the **target area** and brownfield site(s)

- How do they impact the community and what is the potential for reuse?

Revitalization Planning

Describe site **reuse opportunities** and how they align with local, regional, and/or state development plans

Leveraging

List the **funding** and **resources** available and/or in-hand to implement site redevelopment plans

Include existing and (if applicable) needed infrastructure

LEVERAGING



- Calculate returns
- Every \$1 spent on brownfields yields \$20 of private or government investment
- Identify all sources of local, public, private and in-kind assistance
- EPA's [Brownfields Federal Funding Guide](#)
- More info on [Leveraging Resources](#)



2. COMMUNITY NEED



Sensitive Populations

Identify the **sensitive populations** in the targeted community

- children, pregnant women, elderly, minority or low-income communities, etc.

Brownfield Impacts

Connect brownfields impacts with **data**, how they will be addressed by grant?

- cancer rates, obesity, blood lead levels, asthma, substandard housing, limited access to health care

Social Impacts

Emphasize the **social impacts**, how will they will be addressed by grant?

- blight, crime, vandalism, illegal dumping, people moving out, lack of neighborhood upkeep, lack of prosperity

COMMUNITY NEED – RESOURCES



SITES/TOOLS

- [EPA Brownfields website](#), [Tips on Starting Early](#), and grant solicitation
- [EnviroAtlas and Brownfields](#) website (esp. Eco-Health Relationship Browser)
- EPA [EJSCREEN](#) Tool
- EPA [Cleanups in My Community](#) website
- EPA [Land Revitalization Toolkit](#)
- EPA [National Air Toxics Assessment](#)
- U.S. Census Bureau [American Community Survey](#) (ACS)
- CDC [PLACES](#) data (collaborative effort)
- CDC [National Program of Cancer Registries](#)
- [USDA Food Access Research Atlas](#)
- U.S. EDA [Tools for Economic Development](#)
- State of CA OEHHA [CalEnviroScreen](#)
- [Air Quality Index](#)
- [America's Children and the Environment](#)
- [My Environment](#)
- [State and Territorial Environmental Agency](#)
- [Environmental Justice](#)
- [Water Resources](#)
- [Radon Zone Map](#)
- [Toxic Release Inventory](#)

IDEAS FOR FURTHER PROJECT-SPECIFIC RESEARCH

- Local and regional planning agencies/Councils of Governments
- Local and regional economic development offices
- State and local air and water regulatory offices (site background, add'l resources)
- State and county offices of environmental health and public health
- State, local, or university programs for planning, economic, business development
- State Auditor's offices (for information on financial standing of local government)
- State employment offices

SOCIO-ECONOMIC TOOLS

- [Fedstats](#) - links to all relevant agencies based on your search criteria, such as income, health, labor, education, and crime levels and allows you to search by state as well.
- [U.S. Census Bureau](#) - provides statistics on economics, employment, health, housing, employment, and other categories. You can search by state and find detailed reports on each state.

HEALTH/WELFARE/ENVIRONMENT – RESOURCES



[Department of Health and Human Services \(HHS\), Health Resources and Services Administration \(HRSA\)](#)

Provides state profiles for medical professional shortage areas and grants for health care

[Agency for Toxic Substances and Disease Registry \(ATSDR\)](#)

ATSDR has toxicity profiles, health consultations, and education tools

[Centers for Disease Control and Prevention \(CDC\), National Center for Health Statistics \(NCHS\)](#)

CDC has a National Vital Statistics System (NVSS) that includes national birth and death statistics

FastStats:

- Asthma www.cdc.gov/nchs/fastats/asthma.htm
- Diabetes www.cdc.gov/nchs/fastats/diabetes.htm
- Heart Disease www.cdc.gov/nchs/fastats/heart-disease.htm

[Indian Health Service](#) Health Promotion Disease Prevention

[National Institutes of Health \(NIH\), National Cancer Institute \(NCI\)](#) Webpage that provides state-specific cancer statistics, cancer trends, and maps

[NIH, National Institute of Diabetes and Digestive and Kidney Diseases](#) Compiles and presents national diabetes statistics

[Office of Minority Health, Department of Health and Human Services](#) General health and racial, and health disparities data

[US Census Bureau, US Department of Commerce](#)
The American Community Survey maps county-level data based on the most recent Census and American Community Survey estimates

[Bureau of Labor Statistics, US Department of Labor](#)
Provides national, state and local unemployment and employment data

[US Department of Housing and Urban Development \(HUD\)](#) Grants for community-lead hazard abatement, training and to support creating healthy homes and other community programs

2. COMMUNITY ENGAGEMENT – PARTNERSHIPS



- **Clearly describe all relevant roles for all partners and stakeholders for different aspects of your project...don't just make a list**
- Other agencies
 - State or local health departments
 - Community Development agencies
 - Federal, State, and/or private grants/resources
- Neighborhood, cultural and faith-based organizations
- Private Developers, local businesses, Foundations
- Non-profits
- **Describe how input will be gathered and used**

3. TASK DESCRIPTIONS



Thorough Task Description

Identify all tasks, and ensure they're **eligible activities** that will help you meet project goals

- Include task leads and a reasonable project schedule
- Clear goals/outputs

Cost Estimates

Provide **specific cost estimates**, clearly support budgeted amounts

- Detailed estimates are an indication of a well-thought-out project

Measuring Results

Describe the project management approach, including frequency of project check-ins, that will result in a project that **accomplishes the proposed goals**

- Update ACRES database quarterly!

POLL QUESTION



What webinar topics would be most helpful in the future?

How helpful was this webinar?



THANK YOU!

The presentation will be available on the Brownfield's website.



CONTACT INFORMATION

Name	Email/Phone	State Focus Area
Brooklyn James	James.Brooklyn@epa.gov (415) 972-3519	California
Daniel Moher	moher.daniel@epa.gov (415) 972- 3210	California, Hawaii, Pacific Islands, American Samoa, Guam
Richie Donahou	donahou.richie@epa.gov (415) 972-3331	California, Arizona
Lisa Hanusiak	hanusiak.lisa@epa.gov (415) 972-3152	Nevada
Scott Stollman	stollman.scott@epa.gov (415) 972-3729	Arizona, California
Jasmine Williams	williams.jasmine.a@epa.gov (415) 972- 3721	Nevada, California
Amanda Pease	Pease.Amanda@epa.gov (415) 972-3068	California
Jennifer Tung	Tung.Jennifer@epa.gov (415) 972-3778	Arizona