

EXPANDED
EDITION

East Palestine

TRAIN DERAILMENT RESPONSE

Serving East Palestine, Negley, Darlington
and surrounding communities

NEWSLETTER

November 1, 2023



Sign along Route 51 letting motorists know Taggart Street is now open.

PROGRESS MADE

EPA Issues Administrative Order

On October 18, EPA ordered Norfolk Southern to conduct additional cleanup and investigation focused on oily sheens and sediments in Sulphur Run and Leslie Run creeks in East Palestine and surrounding areas. This order under EPA's Clean Water Act authority will build on the assessment and cleanup work already conducted in the creeks over the last several months and is a progression of response actions at the site based on data collected and analyzed. Work done under this order will determine if more cleanup is necessary to ensure any potential long-term impacts are addressed.

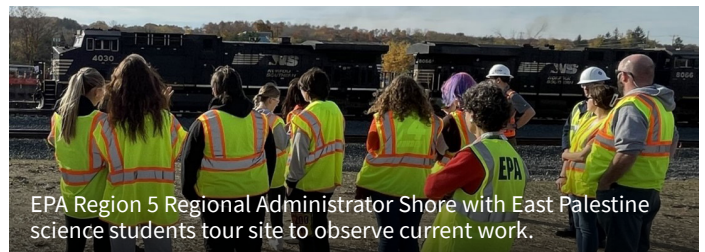
Car Scrapping Area 4 and South Ditch Excavations are Complete

Excavation of two major contaminated areas on the south side of the train tracks, known as Car Scrapping Area 4 and South Ditch, are complete. Sampling showed excavation removed contamination in these areas. The next step is to backfill with clean soil and ballast. Site restoration will be coordinated with the property owners. Crews will continue confirmatory sampling as part of final site evaluation to ensure no hazards remain.

Air Monitoring Update

Over the next few weeks, community members will see changes in the air monitoring and sampling equipment

in the area. Now that the major excavation of hazardous materials is complete, air monitoring and sampling will no longer be required around the perimeter of the site and devices will be removed from utility poles and other locations. This includes the PTR-MS (Proton Transfer Reaction – Mass Spectrometry) air monitoring vans. Moving forward, precautionary air monitoring and sampling may be conducted on a task-specific basis. In those cases, community members may see monitoring and sampling equipment in other locations when work is being conducted.



EPA Region 5 Regional Administrator Shore with East Palestine science students tour site to observe current work.

Confirmatory Soil Sampling in East Palestine Park Continues

Although areas at and near East Palestine Park are being assessed, there has been no evidence of contamination in that area, other than known contamination in creek sediments. A previous assessment of East Palestine Park conducted in March did not show any contamination above background levels for derailment-related chemicals.

A LOOK AHEAD

AT THE DERAILEMENT SITE

- On-site excavation work is completed and stockpiled contaminated soil is being removed from the staging areas. Confirmation soil sampling continues in areas at and near the derailment site.
- Sampling results from the on-site wastewater treatment system continue to show treated wastewater can be disposed of off-site as non-hazardous. Each tank of treated wastewater is sampled before being shipped off-site.

IN THE GREATER COMMUNITY

- Stationary and mobile air monitoring will continue through the end of the week around the community and within the derailment site to monitor post-removal air quality conditions. Air monitoring will then continue on a task specific basis.
- Surface water sampling and visual inspections continue in Sulphur and Leslie Runs.

COMMUNITY CORNER

Ohio EPA Water Quality Supervisor Bill Zawiski hosted a two-part series of stream workshops with community members to share more details about Sulphur and Leslie Runs. These “Stream Ambassadors” spent an evening seeing a thorough demonstration of surface water and sediment sampling techniques and learning how that information informs scientists about stream health. The second session focused on biological and ecological sampling with demonstrations including electrofishing, kick net sampling for macroinvertebrates, and habitat evaluation using Ohio’s Qualitative Habitat Evaluation Index, or QHEI.



Ohio EPA's Bill Zawiski demonstrating surface water and sediment sampling techniques

EPA WELCOME CENTER

New Hours

NOVEMBER 2023

	MON	TUE	WED	THU	FRI	SAT
Starting in November, the EPA Welcome Center will begin to reduce walk-in hours and transition to meeting with community members by-appointment. Please call EPA's Hotline with any questions.			1 OPEN 9AM to 6PM	2 OPEN 9AM to 6PM	3 OPEN 9AM to 6PM	4 CLOSED
	6 CLOSED	7 OPEN 9AM to 6PM	8 OPEN 9AM to 6PM	9 OPEN 9AM to 6PM	10 CLOSED	11 CLOSED
	Starting November 13 Call 330-775-6517 to make an appointment to meet with EPA Staff					



(330) 775-6517



R5_eastpalestine@epa.gov



epa.gov/east-palestine-oh-train-derailment

TOP 3 QUESTIONS OF THE WEEK

01 What is the process for backfilling excavated areas at the derailment site?

Areas that were excavated as part of the derailment cleanup effort will be backfilled with clean soil. Before soil is chosen as backfill it is tested for chemicals and heavy metals. While the source of backfill is still being identified, some areas have been temporarily backfilled with ballast (large gravel) to allow workers to move around the site.

02 Are there health risks to driving through Taggart Street?

There are no anticipated health risks along Taggart Street associated with project activities. As work proceeds, to ensure worker and community safety, the Unified Command will continue to evaluate site conditions for health and safety considerations. While traffic will be able to proceed through the work areas along Taggart Street, access to active work areas will remain restricted to ensure public safety. Also, vehicles are washed within the worksite to prevent migration of dirt and mud onto the road.

03 There is mud on my car from driving on Taggart Street. Is this contaminated?

No, all site vehicles are washed and cleaned before leaving the operational areas. Vehicles carrying contaminated soil are tightly covered and checked before entering Taggart. Street sweepers clean dust and residual dirt from the surrounding roads, so any mud would not be from contaminated areas.

DID YOU KNOW?

Sheen, or a shiny film on the water surface, can be caused by biological activity from bacteria in the water. While EPA has observed both biological and chemical sheens in Sulphur and Leslie Runs, it can be helpful to know how to tell the difference. Biological sheen can look very similar to sheen caused by petroleum products, but there is a simple way to tell the difference. When a stick is poked into a bacterial sheen or a stone is dropped into it, the sheen will break up into small pieces or plates. In contrast, a petroleum sheen will swirl and reform after a disturbance. Please remember, it is still advised for residents to stay out of Leslie and Sulphur Runs while investigations and cleanup work continue.



Source: [Flic.kr/p/qBMfCP](https://www.flickr.com/photos/jsnsndr/) by jsnsndr, licensed creativecommons.org/licenses/by/2.0/

SITE STATUS CHECK

As of October 27



NORTH TRACK:

In operation

SOUTH TRACK:

In operation



LESLIE RUN:

Stream monitoring is ongoing

SULPHUR RUN:

Stream monitoring is ongoing

39 million

gallons of wastewater shipped off-site



171,381

tons of solid waste shipped off-site



(330) 775-6517

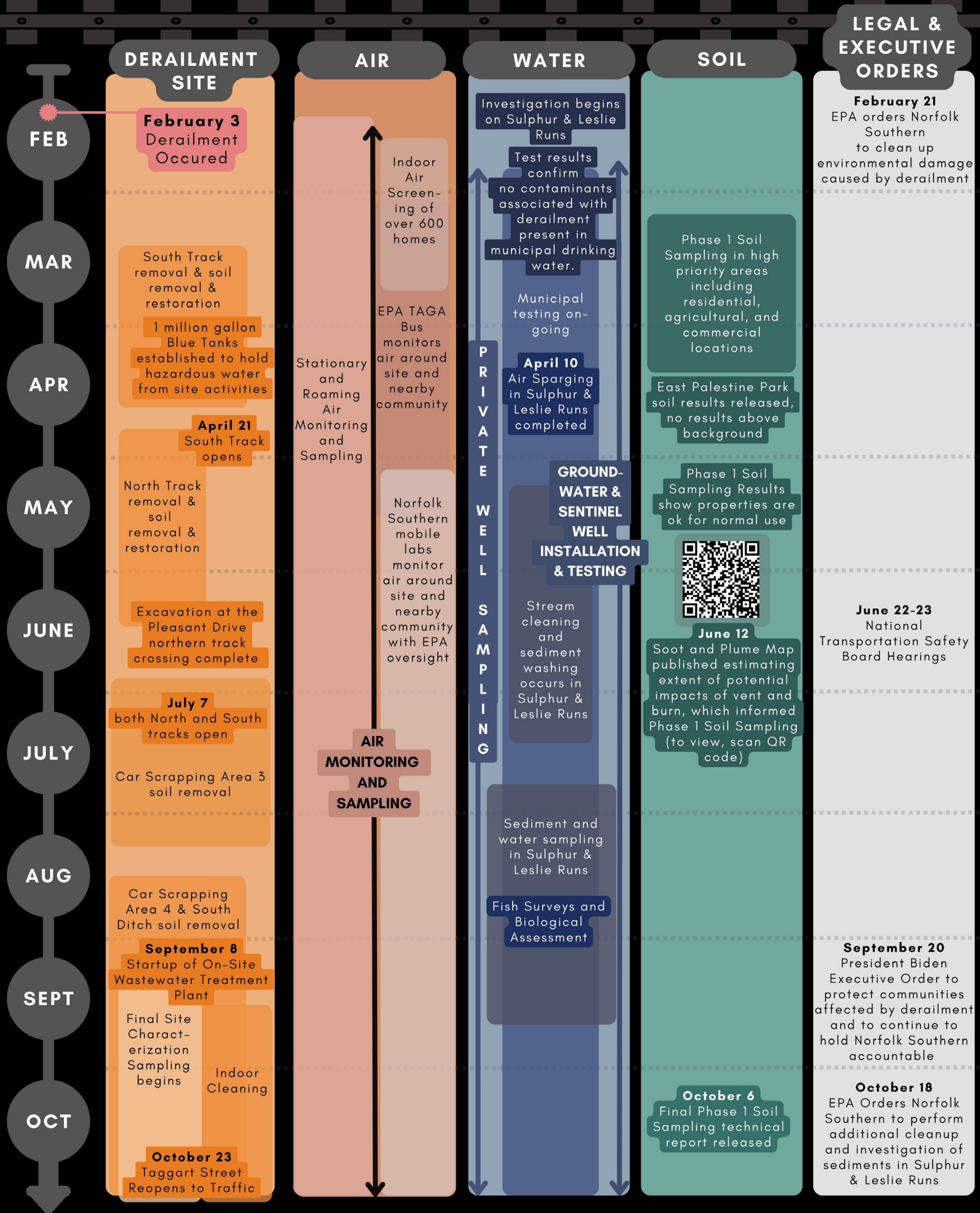


R5_eastpalestine@epa.gov



epa.gov/east-palestine-oh-train-derailment

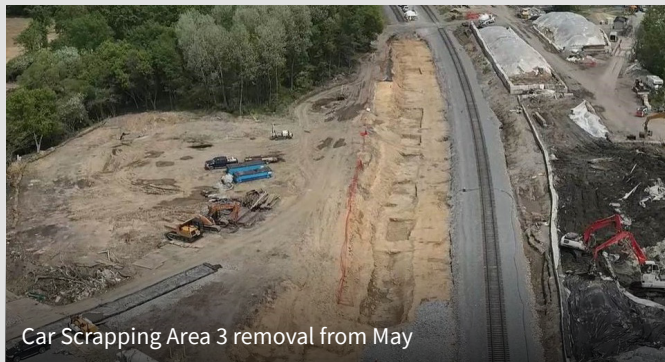
DERAILMENT RESPONSE TIMELINE



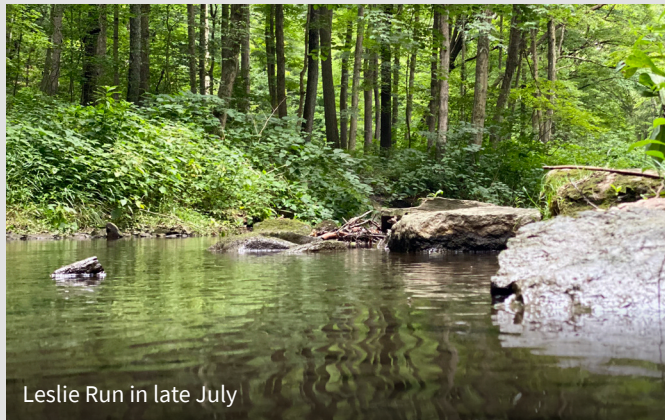
*please note some start and end dates are approximate & this visual graphic is intended to display key events.

The Three Orders

CERCLA Unilateral Administrative Order: Work by Norfolk Southern is progressing and EPA continues to oversee the company's progress. The main line track and contaminated soil cleanup are coming to a close. Millions of pounds of hazardous waste have been removed from the site and confirmatory sampling continues to ensure all spill material has been removed.



Clean Water Act Order: EPA is reviewing the Norfolk Southern workplan to conduct a sediment and sheen assessment of nearly five miles of creeks. Work will begin soon, possibly this week. Weather and stream conditions will influence the timing of this work.



Presidential Executive Order: FEMA has deployed a Recovery Coordinator to the area and has been collecting information to prepare a Rapid Needs Assessment for this incident. The Department of Health and Human Services is evaluating public health needs and will be preparing its progress report to the President soon.

Long Term Monitoring of Groundwater

Municipal drinking water, private drinking water wells, and groundwater under and around the derailment site continue to be monitored and sampled. To date, no contaminants directly related to the derailment have been detected in finished drinking water. A long-term

drinking water strategy will be developed to provide assurance to the community that its drinking water remains free of derailment-related contaminants.



Ongoing Recovery

Now that the major excavation of hazardous material is complete, the Unified Command has been reflecting on the past 9 months since the incident occurred. The progress has been remarkable, and we thank our community partners for their support, resilience, and patience with the process. Although the cleanup seems to have taken a long time, it is important to do the job right and include key community and organizational stakeholders in the process. As Mayor Conaway said in his statement on October 26, we are at a “bittersweet” moment, stating that “We didn’t want these events to happen at all, but they did. It feels good in a sense and sad in a sense that this happened to our village in the first place.”

On October 26, Ohio EPA Director Anne Vogel offered a reassuring statement to the community: “Even after U.S. EPA leaves the site, Ohio EPA, as I am fond of saying, we live here. We’re Ohio. We’re not going anywhere... There are many layers of protection to ensure the residents are safe... We will continue testing those [monitoring wells and sentinel wells] for decades. That is what Ohio EPA does.”

COMMUNITY WORKSHOP AND RESEARCH OPPORTUNITIES



The National Academies of Science, Engineering, and Medicine is organizing a virtual public workshop on **November 6-7** to explore potential health research and surveillance priorities arising from the train derailment. To register for the event and find out more information, please go to nationalacademies.org/our-work/public-health-research-and-surveillance-priorities-from-the-east-palestine-ohio-train-derailment-a-workshop



The East Palestine Resiliency Project is hosting a Stress Management Support Group from 6 to 7:30 p.m. on the 2nd and 4th Monday of every month at the East Palestine Memorial Public Library on 309 N. Market St. This month's sessions are scheduled for **November 13** and **27**. These meetings are offered free of charge to residents of East Palestine and the surrounding communities impacted by the train derailment. For more information, call **330-718-8260**.



University of Kentucky College of Public Health researcher Dr. Erin N. Haynes and her team received a grant from the National Institutes of Health (NIH) to conduct a long-term health study with and for the residents of East Palestine and the surrounding area. The first step is to learn more about the experiences, health symptoms, and environmental health concerns from residents in the impacted area of the train derailment. Anyone 18 or older who lives in Columbiana, Mahoning, Stark, Carroll or Jefferson Counties in Ohio and residents of Beaver and Lawrence Counties in Pennsylvania and Hancock County in West Virginia are eligible to participate in the brief online survey. The survey asks questions about experiences during the evacuation, and concerns about exposures and symptoms, including stress. uknow.uky.edu/research/uk-researcher-launching-health-tracking-survey-east-palestine



A group of communication researchers with Carnegie Mellon University are looking for participants over the age of 18 to take part in a voluntary study looking to understand how residents of East Palestine have been receiving information and communicating about the risk posed by the train derailment and chemical release. If you are interested or want more information, please contact Dr. Barbara George or Dr. Lisa Phillips at eastpalesinestudy@gmail.com or Dr. Mary Le Rouge at **216-212-5131**.



(330) 775-6517



R5_eastpalestine@epa.gov



epa.gov/east-palestine-oh-train-derailment



Public Health Resources



OHIO

East Palestine Permanent Clinic

Phone: (330) 362-4920

Address: 139 N. Walnut, East Palestine, OH 44413

Hours: Monday thru Friday, 9am-5pm

Website: elch.org



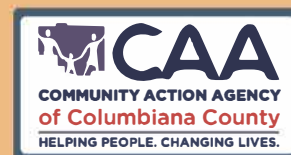
- Free for uninsured patients
- Primary care services include screening tests as they relate to the trail derailment, mental health care, preventative care
- May include on-staff specialists and referrals to other specialists

Community Action Agency of Columbiana County

Phone: (330) 424-7221

Hours: Mobile Unit visits EP on Wednesday mornings

Website: caaofcc.org



CAA Mobile Unit – Counseling Services (by appointment only)

- To schedule, please call 330-424-5686.
- Each Wednesday morning, the Mobile Unit visits East Palestine to provide individual & family counseling

Columbiana County Mental Health & Recovery Services Board

Phone: (330) 424-0195

Crisis Hotline: (330) 424-7767

Crisis Text Line: Text 4HOPE to 741741

Website: ccmhrs.org



- Provides treatment and support for mental health & substance use problems
- Services include: 24hr crisis hotline, affordable recovery support, community-based care, recovery housing, etc.

Columbiana County Health District

Phone: (330) 424-0272

Hours: Monday thru Friday, 8am-4pm

Address: 7360 OH-45, Lisbon, OH 44432

Website: columbiana-health.org



- Most health services are reduced-cost or free of charge for Columbiana County residents
- To request private well sampling call 330-849-3919.

REGIONAL

Great Lakes Center for Reproductive and Childrens Environmental Health

Website: childrensenvirono.uic.edu

Phone: 312-355-0597

Hours: Monday thru Friday, 8am-4pm



- Multidisciplinary center staffed by experts in pediatrics, occupational and environmental medicine, clinical toxicology, and industrial hygiene who evaluate exposures to environmental toxicants such as heavy metals, pesticides, mold, and other indoor/outdoor pollutants.
- Staff are available to provide consultations to healthcare providers, individuals, and communities about the health effects of exposures to environmental toxicants to children and pregnant women.

PENNSYLVANIA

PA Dept. of Health

Hotline: (877) PA-HEALTH / (877)-724-3258

- Provides check-ups to help identify the root of health concerns
- Links residents to local health care services, including physical & behavioral health care providers from Allegheny Health Network, Heritage Valley Health System, UPMC and Primary Health Network

PA Support & Referral Helpline:

(855)-284-2494 (TTY: 724-631-5600)

- Connects Pennsylvanians with mental and emotional support and to local resources

Beaver County Behavioral Health Services: 724-371-8060 or 1-800-400-6180

Poison Control Center incident hotline: 1-877-603-0170

PA DOH environmental health concern:

env.health.concern@pa.gov



STAY INFORMED

As major excavation ends at the derailment site, “This Week at E.P.” videos will shift to periodic updates as needed. To find out the latest information, please scan the QR code on this page to find ongoing updates and resources across all the agencies involved in the train derailment response.

DISTRIBUTION UPDATE

These newsletters will be changing from bi-weekly to monthly starting in November. Mailings will also shift to Wednesday. Expect to receive the upcoming editions on **November 15** and **December 13**.

ABOUT THIS PUBLICATION

This newsletter is developed through a joint effort of state and federal agencies and community organizations. If you would like more information about topics discussed, please visit epa.gov/east-palestine-oh-train-derailment or call EPA’s Information Line at **330-775-6517**.



SCAN ME for a list of additional resources

EPA Welcome Center - EPTD
25 N. Market St.
East Palestine, OH 44413