

Reporting Odors in Your Community

What are you smelling?

Use the odor wheel to help describe the odor.

How long has the smell been happening?

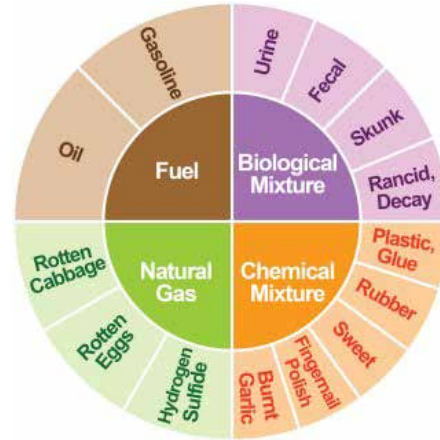
Hours, days, weeks, etc.

How strong is the smell?

Describe the intensity of the smell – weak, moderate, strong, or very strong.

What is the location of the smell?

Address or area of St. Louis where you experienced the odor.



Missouri Dept. of Natural Resources - <https://dnr.mo.gov/reporting/environmental-concern>

Environmental Protection Agency - <https://echo.epa.gov/report-environmental-violations>