



REGION 9

SAN FRANCISCO, CA 94105

MINOR MODIFICATION TO PERMIT NO. R9UIC-CA1-FY16-1 ISSUED TO SAN JOAQUIN REFINING COMPANY LIMITED

In accordance with 40 CFR §144.41(f), Underground Injection Control (UIC) permit no. R9UIC-CA1-FY16-1 is hereby modified to reflect changes in the well construction of WD-2. Specifically, the modification revises the approved perforated injection intervals of the well.

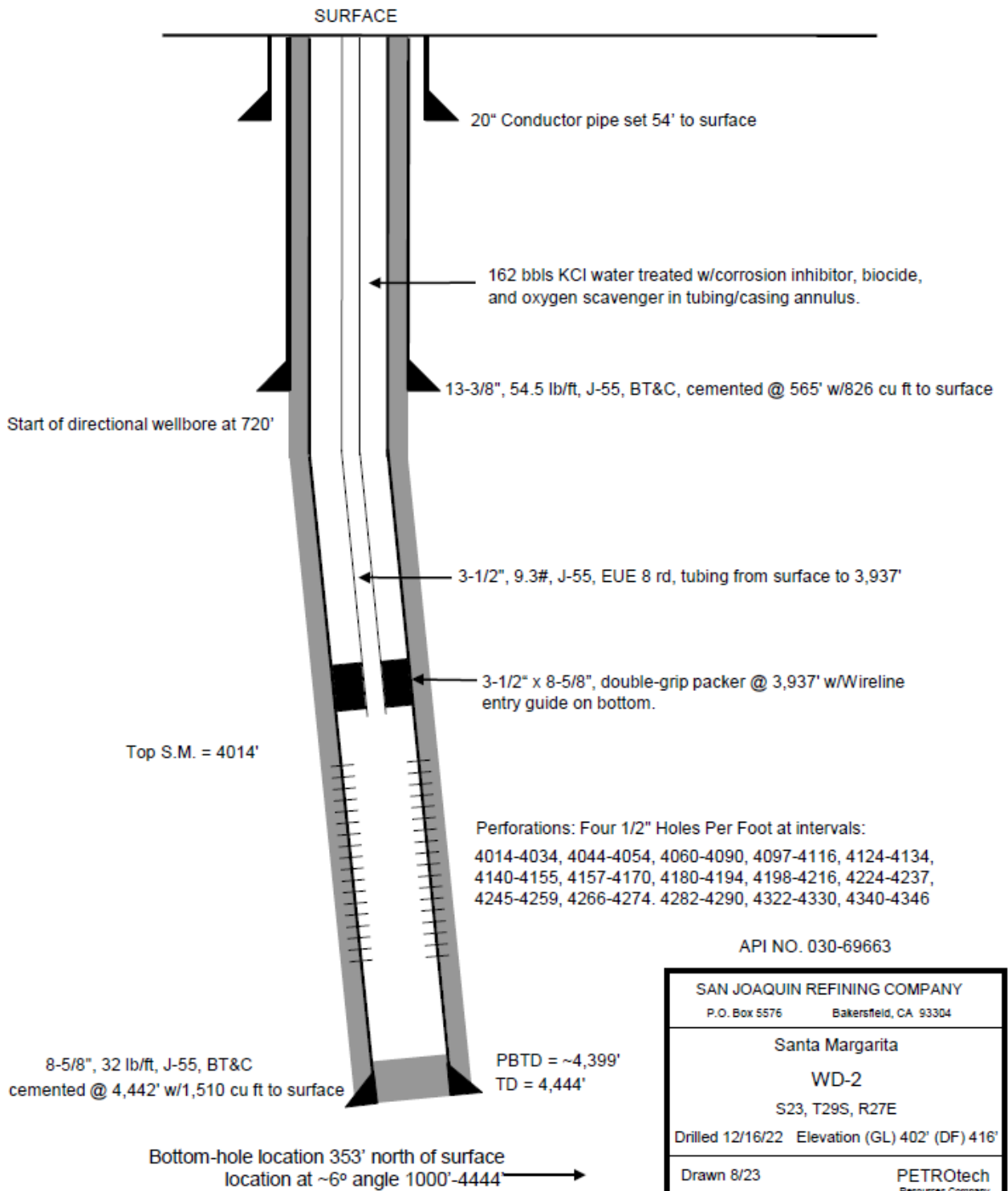
Portions of Part II.B.6 of the Permit and figures of WD-2 in Appendix B are revised to incorporate the above changes and now read as follows (for clarity, changes on page 9 of the Permit are shown below with new additions in bold):

Page 9

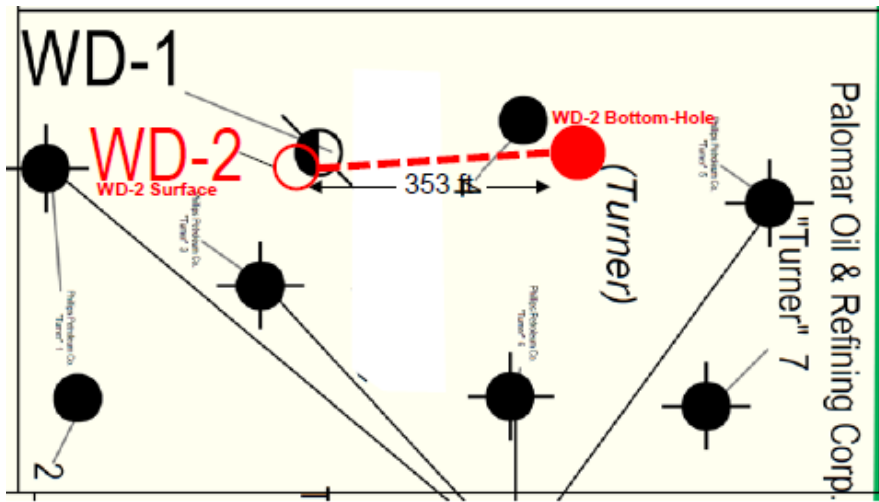
6. Injection Interval

Injection into the Existing Active Well, WD-1, and/or potential injection from the Proposed Additional Well, is only permitted into the Santa Margarita Formation within the Fruitvale Oil Field, at the perforated interval, 4,020' to 4,225' below ground surface (bgs) **for WD-1, and 4,014' to 4,346' bgs for Proposed Well WD-2**, as depicted in the as-built diagram in Appendix B.

Appendix B (Current Well Schematic and Surface Location for WD-2)



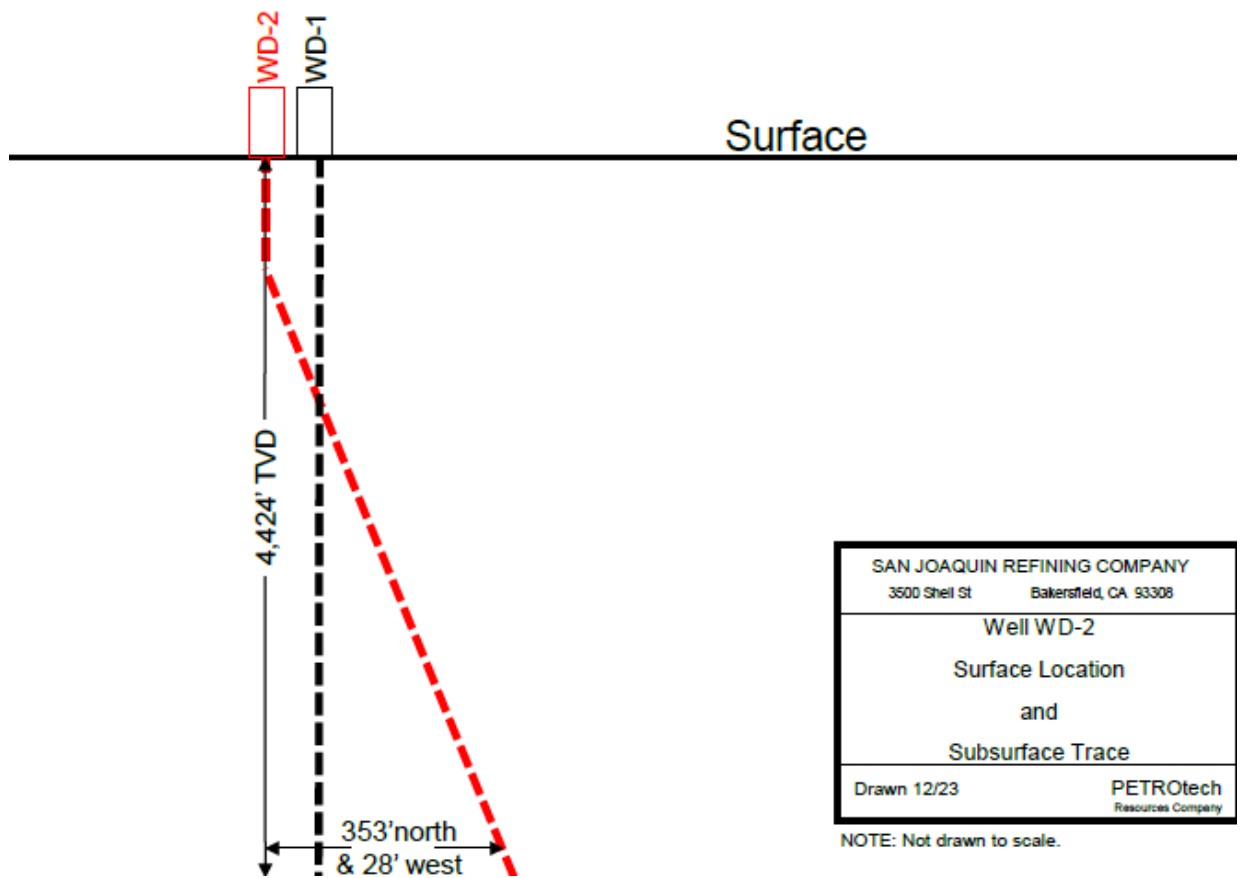
NOTE: Not drawn to scale.



WD-1: Surface and bottom hole locations are 859' South and 2,152' East of the NW corner of Sec 23, T29S, R27E.

WD-2: Surface location 870' South and 2,187' East of the NW corner of Sec 23, T29S, R27E. Bottom hole location is 517' South and 2,159' East of the NW corner of Sec 23, T29S, R27E.

NORTH →



SAN JOAQUIN REFINING COMPANY	
3600 Shell St	Bakersfield, CA 93308
Well WD-2	
Surface Location and Subsurface Trace	
Drawn 12/23	PETROtech Resources Company

NOTE: Not drawn to scale.

All other permit conditions remain unchanged.

This minor modification is issued and becomes effective on:

December 19, 2023

Tomás Torres
Director, Water Division