

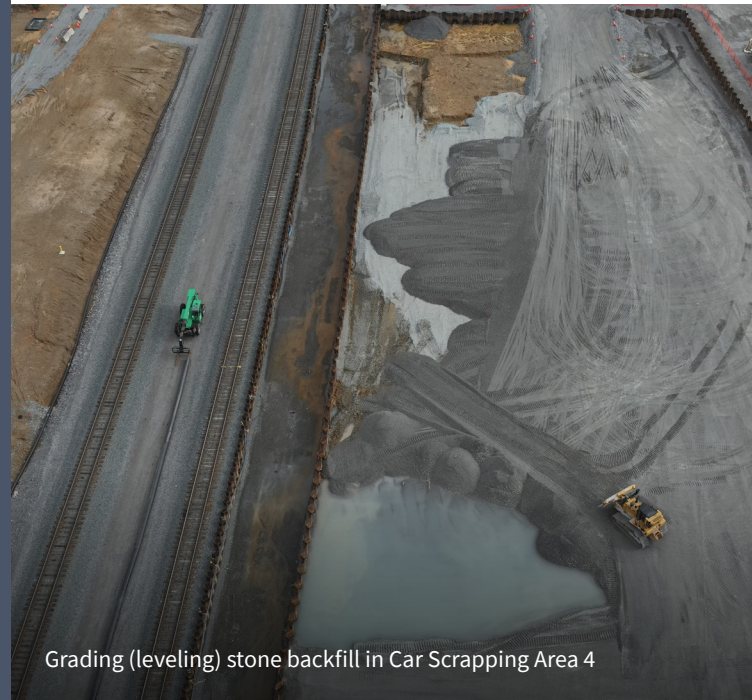
# East Palestine

## TRAIN DERAILMENT RESPONSE

Serving East Palestine, Negley, Darlington  
and surrounding communities

# NEWSLETTER

February 14, 2024



Grading (leveling) stone backfill in Car Scrapping Area 4

## PROGRESS MADE

### Backfilling Excavated Areas

Backfilling operations in Car Scrapping Area 4 are now complete. Over the last few weeks, as many as 100 trucks a day delivered clean stone and gravel into this excavated area where it was then graded and leveled. The next step is to restore Car Scrapping Area 4, which may include adding another foot or so of finer material like sand or topsoil. Also, there are some additional site areas that still need backfill, but these smaller-scale operations will require much less volume of fill than Car Scrapping Area 4.

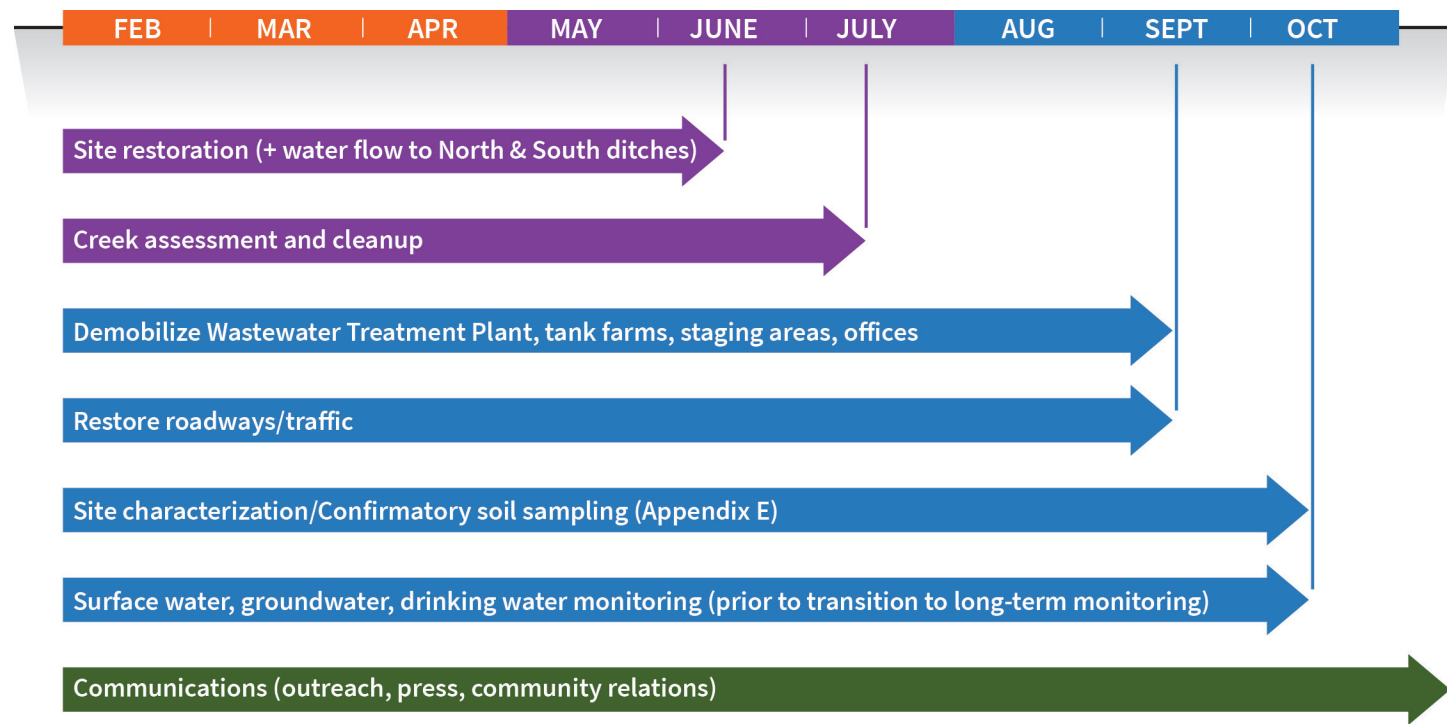
### Easing Taggart Street Traffic Restrictions

Truck traffic on E. Taggart Street will decrease with the completion of major backfilling operations in Car Scrapping Area 4. As this heavy equipment traffic eases, E. Taggart Street traffic controls will be reduced, including fewer cones and signage. The speed limit will remain at 15 mph to ensure both community and worker safety while site restoration and other work continue.



An on-the-ground view of grading in Car Scrapping Area 4

# ESTIMATED 2024 TIMELINE



*This schedule is an estimate and is subject to change based on several factors, including without limitation, obtaining required regulatory approvals, access, weather, equipment malfunction, receipt of laboratory results, etc.*

## PROJECT SPOTLIGHT | Wastewater & Surface Water Update

### Wastewater Management and Disposal

Throughout the response, rainwater and snow melt that have touched potentially contaminated soil areas have been collected and put into storage tanks. Initially, this water was then shipped to off-site disposal facilities as hazardous waste. Following construction of the on-site wastewater treatment plant (WWTP) most collected water has been sent through the treatment system before being shipped off-site as non-hazardous waste.

Now that all contaminated soils have been removed, and after many months of testing the collected water before on-site treatment, it has been determined that it can be disposed of as non-hazardous even without treatment if it is first tested to show it doesn't contain vinyl chloride and other hazardous materials. This represents great progress, is a significant step towards final site restoration and reflects how successful the removal of contamination has been.

Planning for the final phases of water management, and endpoints for when it will no longer be necessary to collect and manage it as waste, are underway and will be described in upcoming newsletters.



### Creek Assessment and Cleanup Update

In the coming weeks, keep an eye out for summary reports from recent creek assessment work. Also, an interactive map detailing the sheen survey has been added to the website ([epa.gov/east-palestine-oh-train-derailment/qualitative-sheen-assessment-results](https://epa.gov/east-palestine-oh-train-derailment/qualitative-sheen-assessment-results)). EPA has previously posted all of its sediment sampling results to its website, which includes data from February, summer, and late fall of 2023. Planning is underway for additional cleanup actions necessary to address sheen and sediment contamination that will begin in early spring. Details of these plans will be explained as they are finalized.

## IN THE NEWS

### Dioxins and Data Availability

Some recent news reports made an inaccurate claim that EPA failed to openly share data, particularly the waste-characterization data that was collected in February 2023 related to dioxin and furan compounds. Early in the response, EPA started sharing dioxin data from characterized site waste with the public. This data sharing occurred through many meetings with community members at EPA's welcome center and at broader community meetings and events. EPA made this data publicly available on its webpage and has openly discussed it throughout the response. The dioxin and furan levels detected while characterizing derailment site wastes for disposal were not unusual for this type of waste and were managed safely throughout the cleanup. EPA remains committed to scientific integrity and transparency of its data and data collection methodology.

## BY THE NUMBERS

### Waste

Over **176,000 tons**

more than **350 million** pounds of contaminated soil\*

\*shipped off-site for certified disposal

**201 drums**

of site-related material contained\*

Over **49 million**

gallons of wastewater\*

### Samples

**1,025** groundwater

Over **28,000** air

**3,872** surface water

**233** sediment

**1,309** private well

**6,323** soil (Appendices D & E)

**288** public drinking water

As of February 10

## COMMUNITY CORNER

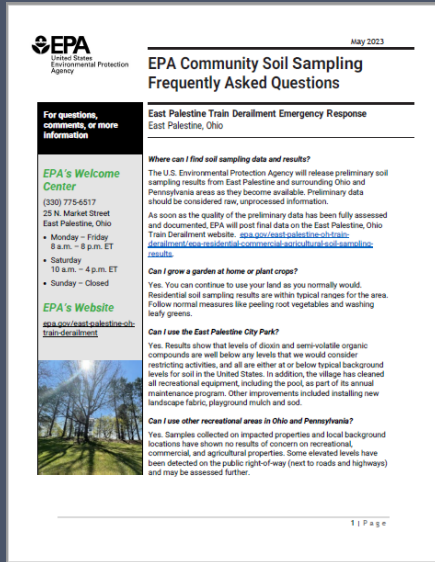
### Sound the Alarm Campaign

In the village of East Palestine, the American Red Cross is partnering with the fire department to install free smoke alarms for residents who don't have adequate smoke alarms (one per each level of the home). Please check the EPFD Facebook page for the registration form and additional details.



# FACT SHEET COMING SOON

More details on wastewater and surface water, plus information on the status of additional cleanup activities for Sulphur and Leslie Runs, will be mailed in a separate fact sheet.



A fact sheet shared in May

## ABOUT THIS PUBLICATION

This newsletter is developed through a joint effort of state and federal agencies and community organizations. If you would like more information about topics discussed, please visit [epa.gov/east-palestine-oh-train-derailment](http://epa.gov/east-palestine-oh-train-derailment) or call EPA's Information Line at **330-775-6517**.



SCAN ME for a list of additional resources

EPA Welcome Center - EPTD  
25 N. Market St  
East Palestine, OH 44413