

**UNITED STATES ENVIRONMENTAL PROTECTION AGENCY
REGION VII
11201 Renner Boulevard
Lenexa, Kansas 66219**

In the Matter Of:)	
)	
Solomon Corporation Reclamation Facility)	Approval to Commercially
302 West 7th Street)	Store and Dispose of Polychlorinated
Solomon, Kansas 67480)	Biphenyl Waste
EPA ID KS0002431880)	

AUTHORITY

This Approval to commercially store and dispose of Polychlorinated Biphenyls (PCB) waste is issued pursuant to Section 6(e)(1) of the Toxic Substances Control Act (TSCA), 15 U.S.C. § 2605(e)(1), and 40 Code of Federal Regulations (CFR) § 761 “Polychlorinated Biphenyls (PCBs) Manufacturing, Processing, Distribution in Commerce, and Use Prohibitions” (PCB Regulations).

TABLE OF CONTENTS

AUTHORITY	1
BACKGROUND	2
APPLICABLE REGULATIONS	2
FINDINGS	3
EFFECTIVE DATE.....	3
DEFENITIONS.....	3
CONDITIONS OF APPROVAL.....	5
A. General Conditions	5
1. Approval Compliance.....	5
2. Duty to Report Noncompliance.....	5
3. EPA Modification, Suspension, Revocation and Termination of Approval.....	6
4. Application and Approval Modifications.....	6
5. Approval Expiration/Renewal.....	6
6. Entry and Inspection.....	7
7. Change in Ownership or Operational Control.....	7
8. Change in Flood Plain	8
9. Transformers and Other Electrical Equipment.....	8
10. Bankruptcy	8
11. Severability.....	9
B. PCB Storage.....	9
1. Facility Description	9
2. PCB Storage Areas	9
3. Maximum Storage Capacities for PCBs and PCB Items.....	10
4. Storage Requirements for PCBs and PCB Items.....	11
5. PCB Marking and Labeling.....	11

6. PCB Storage Container Requirements	11
7. Storage Area Requirements	12
8. Storage Area Inspection Requirements	13
C. Scrap Metal Recovery Oven	13
1. Process Findings	13
2. Emissions Compliance Test	14
3. Operational Conditions.....	14
4. Operational Requirements	14
5. Contingency Plan Requirement	15
6. Maintenance of Data and Records.....	15
D. Facility Operation, Limitation of Exposure and Control of Releases	15
1. Facility Conditions	15
2. Facility Security.....	15
3. Worker Protections.....	16
4. PCB Spills and Releases.....	17
5. Emergency Provisions	18
6. Recordkeeping and Reporting.....	19
7. Closure and Financial Assurance	22
DECISION TO APPROVE	25
SOLOMON CERTIFICATION FORM	26
Attachment A - COMMERCIAL STORAGE	27

BACKGROUND

Solomon Corporation (“Solomon”) owns and operates a facility located at 302 West 7th Street in Solomon, Kansas, at which it functions as a commercial storer and disposer of PCB waste (as defined in 40 CFR § 761.3) engaged in storage and disposal activities requiring EPA approval. Solomon operates a scrap metal recovery oven which is included in this Approval. Solomon also operates a transformer reclamation facility at this location for Non-PCB equipment processing.

On March 21, 2006, Solomon submitted an initial application to commercially store PCB waste, which EPA approved on August 21, 2007. Solomon renewed and modified their application to include disposal which the EPA approved on October 4, 2012. On September 15, 2017, Solomon submitted an application for renewal of its existing PCB waste commercial storage and disposal approval. The renewal application submitted on September 15, 2017, is the subject document reviewed for the issuance of this Approval.

APPLICABLE REGULATIONS

This Approval incorporates, and is issued in accordance with, applicable requirements of the PCB Regulations at 40 CFR § 761. The rules applicable to the storage and disposal of PCBs at concentrations of 50 parts per million (ppm) or greater are codified at 40 CFR § 761 Subpart D, “Storage and Disposal.” The PCB Regulations require, among other things, that commercial storers and disposers of PCB waste obtain a written approval issued by the Regional Administrator for the region in which the storage facility is located. On March 16, 2009, the authority of the Regional Administrator was delegated to the Director, Air and Waste Management Division, Region 7.

FINDINGS

Upon review of the Solomon Application, the EPA has determined that the criteria for approval to engage in the commercial storage and disposal of PCB waste as set forth in 40 CFR § 761 have been met. Specifically, the Application demonstrates that Solomon's storage and disposal facility, storage capacity, employee qualifications, closure plan and financial assurance for closure satisfy applicable requirements and that operation of the facility, when conducted in accordance with the conditions of this Approval and all applicable provisions of the PCB regulations, will not pose an unreasonable risk of injury to health or the environment.

EFFECTIVE DATE

This Approval shall become effective upon signature and shall expire 10 years from such date, unless suspended, revoked or terminated, or administratively continued, in accordance with the conditions of this Approval, or unless otherwise authorized under applicable law.

DEFINITIONS

All the terms and abbreviations used in this Approval shall have the meanings as defined in 40 CFR § 761.3 unless the context clearly indicates otherwise or unless the term is defined below for the purposes of this Approval.

“Approval” means the content of this document, the conditions within, and any subsequent EPA-approved written modifications thereto.

“Application” and "Solomon Application" mean all data and materials upon which the EPA based its decision to approve Solomon's request for approval to commercially store and dispose of PCBs and PCB Items, e.g. information submitted to the EPA by Solomon to define, represent, or describe Solomon's commercial storage and disposal operations. This includes Solomon's September 15, 2017, renewal application and any subsequent Solomon application that the EPA approves in writing as a modification to this Approval.

“AWMD” means the Air and Waste Management Division, EPA Region 7.

“CFR” means the Code of Federal Regulations.

“Day” means a calendar day, unless otherwise specified.

“Delegate” means the Director, Air and Waste Management Division, EPA Region 7.

“Director” means the Director of the Air and Waste Management Division within Region 7, U.S. EPA in Lenexa, Kansas. Phone Number: 913-551-7003 or 1-800-223-0425. Mailing Address: US EPA Region 7 11201 Renner Blvd., Lenexa, KS, 66219.

“Electrical equipment” means assembled or disassembled transformers, circuit breakers, switches, bushings, voltage regulators and reclosers.

“EPA” means the U.S Environmental Protection Agency, Region 7.

“Footprint” means the area of the storage area floor space taken up by electrical equipment or PCB capacitors.

“Major modification” means any change which will affect overall Facility performance or environmental impact, including but not limited to changes to the storage areas, the maximum PCB storage inventory, the closure plan, closure cost estimates (except as required for inflation adjustment), and the financial plan for closure.

“Minor modification” means any change which will not affect overall Facility performance or environmental impact including but not limited to an administrative or informational change, and correction to typographical errors.

“MSC” means maximum storage capacity.

“PCB” means polychlorinated biphenyl(s).

“PCB Regulations” are the regulations at 40 CFR § 761.

“Regional Administrator” means the Regional Administrator, EPA Region 7.

“Solomon” means Solomon Corporation, the company which owns and operates a PCB waste commercial storage and disposal facility located at 302 West 7th Street in Solomon, Kansas, and which is approved to commercially store and dispose of PCB waste under this Approval.

"Solomon Facility" and "Facility" mean all contiguous land and improvements on the land and all structures and other appurtenances of the PCB waste commercial storage and disposal facility located at 302 West 7th Street in Solomon, Kansas.

“Spill” has the same meaning as defined in EPA's PCB Spill Cleanup Policy in 40 CFR § 761.123.

“Storage area” or “PCB storage area” means any storage area listed in condition B.2(a).

Remainder of this page intentionally left blank.

CONDITIONS OF APPROVAL

A. General Conditions

1. Approval Compliance

- (a) Solomon must operate its Facility in compliance with the conditions of this Approval and consistent with the information included in the Solomon Application. Noncompliance with any provision of the Solomon Application and/or any condition of this Approval shall be deemed a violation of this Approval and may subject Solomon to civil or criminal enforcement action and associated penalties.
- (b) This Approval supersedes all previous Approvals for the commercial storage and disposal of PCB waste at the Facility issued by the EPA to Solomon.
- (c) Solomon must comply and operate the Facility in accordance with Section 6(e) of TSCA, 15 U.S.C § 2605(e), and the PCB Regulations, including the requirements of the “PCB Spill Cleanup Policy” codified at 40 CFR § 761, Subpart G.
- (d) This Approval is based on the facts, representations, and certifications made by Solomon in its Application. In the event that the conditions of this Approval are inconsistent with the provisions of, or the information contained in, the Solomon Application and supporting documentation, Solomon must comply with the conditions of this Approval.
- (e) Solomon is liable for the actions of its employees, agents, contractors, subcontractors and others who are involved in the operation of the Facility.
- (f) Failure to comply with any of the Approval conditions shall constitute a violation of the requirement in 40 CFR § 761.50(a) to store or dispose of PCB waste in accordance with 40 CFR § 761 Subpart D. A violation of the PCB Regulations is a prohibited act under Section 15 of TSCA.
- (g) Compliance with this Approval does not relieve Solomon of the responsibility to comply with all other applicable federal, state, and local laws and regulations, including the PCB Regulations. Solomon should not rely solely on this Approval for all requirements related to PCBs or the storage and disposal of PCB waste.

2. Duty to Report Noncompliance

If at any time Solomon becomes aware that it is operating the Facility in a manner that is not in compliance with this Approval or other applicable provisions of the PCB Regulations, Solomon shall notify the EPA Region 7 PCB Coordinator within 24 hours and shall submit a written report to the EPA describing the inconsistencies within five calendar days.

3. EPA Modification, Suspension, Revocation and Termination of Approval

- (a) The EPA reserves the right to modify, suspend, revoke and terminate this Approval:
 - (i) If Solomon fails to operate the Facility in compliance with this Approval;
 - (ii) If there is reason to believe that continued operation of the Facility presents an unreasonable risk of injury to health or the environment, or if new regulations or standards become applicable rendering such modification, suspension, revocation, or termination appropriate. Upon request, Solomon shall provide information the EPA deems necessary to determine whether cause exists for modification, suspension, revocation or termination of this Approval. Solomon shall provide such information within the time frame specified in the EPA's request, or if no time frame is specified, within five calendar days of the EPA's request unless impracticable;
 - (iii) Upon discovering misrepresentation(s) or omission(s) of material fact(s) in the Solomon Application; or
 - (iv) For environmental civil violations committed by, or criminal convictions of, Solomon, its principles or key employees.
- (b) The EPA's right to modify, suspend, revoke or terminate this Approval does not in any way preclude its right to commence appropriate enforcement action under any or all applicable statutes and regulations. The EPA reserves any rights and remedies available to it under TSCA, the PCB Regulations, and any other Federal laws or regulations for which the EPA has jurisdiction, to enforce the provisions of this Approval.

4. Application and Approval Modifications

- (a) Solomon must submit an application and receive written EPA approval for any modification to the Solomon Application or to this Approval. Solomon must not implement any such modifications until it receives written EPA consent.
- (b) Minor modifications to the Solomon Application or to this Approval shall be submitted to EPA Region 7 PCB Coordinator and shall be implemented only after receipt of written consent.
- (c) Major modifications to the Solomon Application or to this Approval shall be submitted to the EPA Regional Administrator or his or her delegate and shall be implemented only after receipt of written consent.

5. Approval Expiration/Renewal

- (a) This Approval shall expire 10 years from the date of issuance of this Approval. This Approval and the conditions herein will remain in effect beyond the

Approval expiration date if a complete renewal application is received within the time period specified in condition A.5.b and the EPA has determined in writing that the application is complete.

- (b) To continue the commercial storage and disposal of PCBs and PCB Items granted by this Approval after the expiration date of this Approval, Solomon shall submit a complete renewal application at least 90 days, but not more than 180 days prior to the expiration date of this Approval. A complete renewal application must contain, at a minimum, information listed in 40 CFR § 761.65(d)(3). A complete renewal application is considered to be information submitted in the most recently approved application, with appropriate modifications or updates based on proposed revisions to the original approval, which may include design and operation changes, updated safety protocols, and revised operating and testing procedures. The EPA may require Solomon to submit additional information to support the renewal of this Approval. If Solomon submits this information to the EPA at least 90 days prior to the expiration date of this approval, this approval continues in force (i.e., does not expire) until the EPA issues an approval renewal, a conditional approval renewal, or an approval request denial.
- (c) If Solomon does not submit a complete renewal application at least 90 days prior to the expiration date of this Approval, this Approval will expire as specified in condition A.5.a. Failure to submit a renewal application as described in condition A.5.b will be treated as evidence of Solomon's intent to close.

6. Entry and Inspection

Solomon shall allow, at reasonable times, EPA authorized representative(s) to conduct inspections for the purpose of determining compliance with this Approval. Such inspection activities may include, but are not limited to, permitting EPA authorized representative(s) to:

- (a) conduct interviews;
- (b) inspect and/or collect copies of records and monitoring data;
- (c) take sample(s); and
- (d) inspect, observe and document Solomon's activities, equipment, work practices, operations and processes.

7. Change in Ownership or Operational Control

- (a) Solomon shall notify the Regional Administrator in writing at least 90 days before it intends to transfer ownership or operational control of the Facility. This notification shall include the name, address and telephone number of the intended transferee. A copy of this notification shall be sent to EPA's Region 7 PCB Coordinator. Along with such notification, Solomon shall submit an application to modify the Solomon Application providing the information

required in all applicable provisions of 40 CFR § 761.65(d)(3), along with a notarized affidavit signed by the intended transferee stating that it will abide by all conditions of the Application, including the proposed modifications submitted in connection with the intended transfer of ownership or operation.

- (b) After receiving Solomon's notification and application to modify the Application, the intended transferee's affidavit, evidence that the intended transferee has established financial assurance for closure pursuant to 40 CFR § 761.65(g), and other documents the EPA may require under 40 CFR § 761.65(j)(2), EPA may either:
 - (i) Modify the approval to substitute the transferee's name for Solomon, and make other conforming minor modifications; or
 - (ii) Require the intended transferee to submit a new application and/or apply for a new approval.
- (c) The intended transferee shall not operate the Facility until the Regional Administrator or his or her delegate issues an approval in the transferee's name.
- (d) Solomon must maintain its financial assurance for closure of the Facility until the intended transferee has established financial assurance for closure of the Facility pursuant to 40 CFR 761.65(g) and the EPA issues an approval in the transferee's name.
- (e) The EPA may revoke, suspend and/or modify this Approval or the transferee's new approval if, following a change in ownership or operational control at the Facility, there is a change in the Facility's operations and the EPA finds that this Approval or the transferee's new approval will not prevent unreasonable risk of injury to health or the environment.

8. Change in Flood Plain

Solomon must submit a written notification to the EPA Regional PCB Coordinator immediately upon re-designation of the Facility within a 100-year flood plain. The EPA may modify, suspend, revoke, or terminate this Approval if the EPA determines that the change in flood plain designation, or any change in Facility operations resulting from or associated with such change in flood plain designation, may pose unreasonable risk of injury to health or the environment.

9. Transformers and Other Electrical Equipment

If the PCB concentration of any transformer, or dielectric fluid within any transformer, received by Solomon is not known at the time of receipt, Solomon must treat the transformer to be a PCB Transformer, i.e., 500 ppm or greater PCBs, until testing proves otherwise.

10. Bankruptcy

Solomon must notify the EPA within 30 days of filing for bankruptcy so that the EPA may ensure compliance with the requirements of this Approval, including the maintenance of adequate financial assurance, and ensure that ongoing Facility operations will not pose unreasonable risk of injury to health or the environment.

11. Severability

If any part or condition of this Approval is found to be invalid by any court of competent jurisdiction, all of the other provisions of this Approval shall remain in full force and effect.

B. PCB Storage

1. Facility Description

Solomon Corporation buys, sells, repairs, recycles, and disposes of transformers, regulators and reclosers. The Solomon Facility is an industrial zoned, 29-acre site with 5 acres dedicated to transformer reclamation located at 320 West 7th Street in Solomon Kansas. The PCB storage facility consists of a 15,680-square foot metal building with a traditional metal frame and a standing seam metal roof with a complete guttering system. The walls range from 14 ft. to 32 ft., depending on the specific process area. The walls above the 6-inch curbing are painted high-rib metal. The 2,279-square foot PCB storage tank farm is constructed with a 2-foot wall with metal walls and roof above the concrete.

2. PCB Storage Areas

- (a) Solomon's approved PCB storage areas are described below and are depicted in Attachment A. These PCB storage areas shall be maintained in compliance with 40 CFR §761.65 and the Solomon Application.
 - (i) Area A: 48 feet long by 18 feet wide sealed concrete floor with 6-inch-high curbing.
 - (ii) Area B: 48 feet long by 46 feet wide sealed concrete floor with 6-inch-high curbing.
 - (iii) Area C: 56 feet long by 28 feet wide sealed concrete floor with 6-inch-high curbing.
 - (iv) Area D: 24 feet long by 16 feet 6 inches wide sealed concrete floor with 6-inch-high curbing.
 - (v) Area E: 62 feet long by 34 feet 6 inches wide concrete floor. Drum or tote storage only.
 - (vi) Tank Area: 48 feet long by 38 feet wide sealed concrete floor with 6-inch-high curbing.

- (b) Storage of PCBs or PCB Items in an area other than the approved storage areas described above shall be deemed a violation of this Approval.
- (c) Maintenance of an approved storage area in a manner that is not in compliance with 40 CFR § 761.65(b)(1) and the Solomon Application shall be deemed a violation of this Approval.

3. Maximum Storage Capacities for PCBs and PCB Items

- (a) The maximum storage capacity and the categories of PCBs and PCB Items permitted to be stored at any time are specified below. Solomon's ability to store PCBs and PCB Items at the Facility is limited to the categories and quantities specified below.
 - (i) 40,000 pounds of drained or filled PCB electrical equipment (≥ 500 ppm PCB), not to exceed a total footprint of 408 square feet.
 - (ii) 200,000 pounds of drained or filled PCB contaminated electrical equipment (≥ 50 but < 500 ppm PCB), not to exceed a total Footprint of 2,040 square feet.
 - (iii) 16,000 pounds, or 20 drums, of drained or filled PCB capacitors (≥ 500 ppm PCB), not to exceed a total Footprint of 200 square feet.
 - (iv) 40,000 pounds of drained or filled PCB bushings (≥ 500 ppm PCB), not to exceed a total Footprint of 816 square feet.
 - (v) 33,000 pounds of drained or filled drums holding up to 2,750 gallons of liquid (≥ 50 ppm PCB), not to exceed 50 (55) gallon drums, not to exceed a total Footprint of 500 square feet.
 - (vi) 27,720 pounds of drained or filled totes holding up to 2,310 gallons of liquid (≥ 50 ppm PCB), not to exceed 7 (330) gallon totes, not to exceed a total Footprint of 90 square feet.
 - (vii) 89,800 pounds of soil/debris (≥ 50 ppm PCB).
 - (viii) 13,956 gallons of liquid (≥ 50 but $< 15,000$ ppm PCB) in 2 designated bulk tanks.
- (b) Solomon shall not substitute capacity of one of the PCB or PCB Item categories described above to prevent exceedance of the maximum storage capacity in another PCB or PCB Item category.
- (c) Storage of categories of PCBs or PCB Items in excess of the quantities described above in a given storage area shall be deemed a violation of this Approval.

4. Storage Requirements for PCBs and PCB Items

- (a) Intact and non-leaking PCB equipment and other PCB articles, whether drained or filled, shall be stored free-standing or in PCB article Containers.
- (b) Partially or fully disassembled drained PCB equipment and other PCB articles shall be stored free-standing, or in PCB containers.
- (c) Leaking PCB articles and PCB equipment shall be stored in PCB containers.
- (d) Liquid PCBs shall be stored in PCB containers, dedicated stationary bulk storage containers (tanks), or intact and non-leaking PCB articles.
- (e) Non-liquid PCBs shall be stored in PCB containers.
- (f) Storage of PCBs or PCB Items in a manner that is not in compliance the storage requirements described above shall be deemed a violation of this Approval.

5. PCB Marking and Labeling

- (a) Solomon shall label all PCB Containers, PCB storage areas, and any PCB Item subject to marking requirements under 40 CFR § 761.40 with the label defined in 40 CFR § 761.45.
- (b) Solomon shall place a label on all PCB Items with the date of removal from service for disposal. Storage shall be managed so that PCB Items can be located by this date. Stationary storage containers for liquid PCBs shall have a record that includes, for each batch of PCBs, the quantity of the batch and date the batch was added to the container. The record shall also include the date, quantity, and disposition of any batch of PCBs removed from the container.
- (c) Solomon shall dispose of all PCBs and PCB Items within one year after they are taken out of service. If additional time is required for disposal, Solomon shall comply with the requirements of 40 CFR § 761.65(a)(2) and (3).

6. PCB Storage Container Requirements

- (a) Any container used for the storage of liquid or non-liquid PCB waste shall be in accordance with the requirements set forth in the DOT Hazardous Materials Regulations at 49 CFR § 171 through 180.
- (b) Stationary storage containers (tanks) used to store organic solvents containing \geq 2 ppm PCBs and PCB liquids containing \geq 50 ppm PCBs shall be in compliance with the requirements of 40 CFR § 761.65(c)(7).
- (c) Containers used to store liquid or non-liquid PCB waste shall comply with the requirements of 40 CFR § 761.65(c)(6).

- (d) Solomon's use of a PCB waste storage container that does not comply with any of the requirements described above shall be deemed a violation of this Approval.

7. Storage Area Requirements

- (a) Drums containing PCBs and PCB items shall not be stacked in a manner that could result in a spill. Drums shall not be stacked more than two drums high.
- (b) An aisle width of two feet, minimally, must be maintained to allow for unobstructed access to all PCBs and PCB Items stored on-site by personnel, fire protection equipment and decontamination equipment.
- (c) Solomon may store PCBs and PCB items in a manner that allows maximum use of space. However, PCBs and PCB items must be stored in a manner that presents no danger to workers and that does not impede routine inspections carried out by Solomon as required by this Approval. During inspections conducted by EPA authorized representative(s), Solomon will move items as requested by the inspector(s) to allow the inspector(s) full access to the Facility and stored PCBs and PCB Items.
- (d) Access to the PCB storage areas shall be restricted to workers that have completed training in accordance with paragraph D.3. Those workers that are working for or on behalf of Solomon as of the effective date of this Approval that have been trained under previous versions of the Solomon training manual shall be allowed access to the PCB storage areas for up to 60 days of the effective date of this Approval in order to complete the training described in paragraph D.3 of this Approval.
- (e) Solomon must document the PCB content of all incoming inventory to establish compliance with the conditions of this Approval at all times. Sampling and analytical methods must comply with applicable provisions of the PCB Regulations.
- (f) If any PCB container, PCB article, PCB article container or PCB equipment is leaking, Solomon shall immediately transfer the PCB waste in the container, article or PCB equipment to a properly marked, non-leaking container. Any spilled or leaked materials shall immediately be cleaned up and the materials and residues containing PCBs shall be disposed of in accordance with applicable provisions of the PCB Regulations and Section E. of this Approval.
- (g) No item of movable equipment that is used for handling PCBs and PCB Items in the approved storage areas and that comes in direct contact with PCBs shall be removed from the storage area unless it has been decontaminated as specified in 40 CFR § 761.79.
- (h) PCB Containers must always be closed during storage, except when adding and removing their contents, and must not be opened, handled or stored in a manner which may cause damage or leaks.

8. Storage Area Inspection Requirements

- (a) PCBs and PCB Items in storage shall be checked for leaks and spills daily. Solomon need not document the daily (routine) inspections. However, any spills discovered during these routine inspections shall be cleaned up expeditiously, as specified in paragraph B.8(c) below.
- (b) At least once every 30 days, as required by 40 CFR § 761.65(c)(5), Solomon shall conduct a thorough inspection of each PCB storage area at the Facility. The following elements shall be included in the 30-day inspections:
 - (i) PCBs and PCB Items in storage shall be checked for leaks and spills;
 - (ii) The PCB Containers, PCB Article Containers, PCB Equipment and stationary storage containers (tanks), and ancillary equipment (valves, pipelines, etc.) shall be checked for leaks;
 - (iii) The condition of PCB liquid and spent solvent storage tank shells, tank supports and tank area curbing shall be checked for cracks, leaks or deterioration;
 - (iv) Tank vents, high liquid level alarm systems and liquid level indicators shall be checked to make sure they are operating properly;
 - (v) The condition of the floor, joints and curbing in the PCB storage area shall be checked; and
 - (vi) Spill response and emergency equipment as described in the Spill Prevention Control and Countermeasure Plan (SPCC Plan) submitted and approved as part of the Solomon Application shall be checked and replaced or replenished as necessary.
- (c) PCBs or PCB items found leaking shall be transferred to a properly marked non-leaking container. Any spilled or leaked materials shall immediately be cleaned up and the materials containing PCBs shall be disposed of in accordance with applicable provisions of the PCB Regulations and condition D.4.
- (d) Any needed repairs, including those for leaks, cracks, deterioration, or malfunctioning vents, alarms or indicator levels detected during such inspections, shall be made as expeditiously as possible.

C. Scrap Metal Recovery Oven

1. Process Findings

Solomon operates a model G-466-HT incinerator originally manufactured by a One United Group. The incinerator oven is rated at a capacity of 600 pounds per hour (lb/hr) and is designated as EU-RECLAIM002. The incinerator is equipped with a primary burner rated at 1 million British thermal units per hour (MMBtu/hr) and an afterburner

rated at 3 MMBtu/hr. Process emissions are vented and monitored through the exhaust stack.

2. Emissions Compliance Test

On November 1-3, 2016, an emissions compliance test at normal batch loading for nitrogen oxides (NO_x), carbon monoxide (CO), sulfur dioxide (SO₂), particulate matter (PM), dioxin/furan/PCBs (PCDD/Fs), Hydrogen Chloride (HCl), carbon dioxide (CO₂), and oxygen (O₂) from the exhaust of the G-466-HT incinerator at the Solomon Facility was conducted. The average results of all measured pollutant emissions were below the required state and federal limits, and are documented in the Emissions Compliance Test report dated November 1-3, 2016.

3. Operational Conditions

- (a) Solomon shall operate the G-466-HT scrap metal recovery oven (scrap metal recovery oven, or oven) in compliance with 40 CFR § 761.72, “Scrap metal recovery ovens and smelters”, the Kansas Department of Health and the Environment Air Permit number 0410020, and all other applicable Federal, State, and local laws and regulations at all times.
- (b) Solomon shall only dispose of residual PCBs associated with PCB-Contaminated articles regulated under 40 CFR § 761.60(b), metal surfaces in PCB remediation waste regulated under 40 CFR § 761.61, or metal surfaces in PCB bulk product waste regulated under 40 CFR § 761.62(a)(6) and 761.79(c)(6), from which all free-flowing liquids have been removed in the scrap metal recovery oven.
- (c) PCB liquids, other liquid waste qualifying as waste oils which may be used as provided for at 40 CFR § 761.20(e), or PCB remediation waste, other than PCB-Contaminated articles, may not be disposed of in the metal recovery oven.

4. Operational Requirements

- (a) Solomon shall operate the scrap metal recovery oven as a batch loading process with average charge rates of 2,500 pounds of scrap metal per batch.
- (b) Solomon shall not operate the scrap metal oven with any single load or batch in excess of 3,500 pounds of scrap metal.
- (c) Solomon shall maintain full and functional operation of both enclosed (i.e., negative draft, no fugitive emissions) interconnected chambers of the scrap metal recovery oven.
- (d) All scrap metal is placed in the primary chamber at ambient temperature.
- (e) The rate or quantity of scrap fed into the recovery oven and retention times shall be measured and recorded for each batch.
- (f) The primary chamber operates at a temperature between 537 °C and 650 °C for a

minimum of 2 1/2 hours and reaches a minimum temperature of 650 °C (1,202 °F) once during each heating cycle or batch.

- (g) Heated gases from the primary chamber feed directly into the secondary chamber (i.e., afterburner) which operates at a minimum temperature of 1,200 °C (2,192 °F) with at least a 3 percent excess oxygen and a retention time of 2.0 seconds with a minimum combustion efficiency of 99.9 percent according to the definition in 40 CFR § 761.70(a)(2).
- (h) Heating of the primary chamber shall not commence until the secondary chamber has reached a temperature of 1,200 ±100 °C (2,192 ° ±180 °F).
- (i) Continuous monitoring for concentrations of carbon dioxide, carbon monoxide, temperature, and excess oxygen in the primary and secondary chambers shall be operated and recorded while either chamber is in operation.
- (j) Emissions from the secondary chamber are vented through the exhaust gas stack and gas stack emissions shall be for: particulates <0.015 grains/dry standard cubic foot, sulfur dioxide <35 parts per million by volume (ppmv), nitrogen oxide <150 ppmv, carbon monoxide <35 ppmv, and hydrogen chloride <35 ppmv.
- (k) A measurement of the temperature in the secondary chamber at the time the primary chamber starts heating is taken, recorded and retained at Solomon for 3 years from the date each charge is introduced into the primary chamber.

5. Contingency Plan Requirements

Solomon shall maintain a contingency plan for the scrap metal recovery oven that indicates a list of all required parameters specified in paragraph 4 and values at which shut down should occur. It shall also list any corrective measures and the time frame required for completion of these measures if any of the operational requirements specified in paragraph 4 of this section are not met.

6. Maintenance of Data and Records

All operating data and records for the scrap metal recovery oven shall be maintained in accordance with 40 CFR § 761.180, "Records and monitoring".

D. Facility Operation, Limitation of Exposure and Control of Releases

1. Facility Conditions

Solomon shall maintain and operate the Facility to prevent fire, explosion, releases of PCBs to the environment, and exposure of workers to PCBs. All processing (disassembly and decontamination) of PCBs and PCB Items shall be conducted within the Facility.

2. Facility Security

The Solomon Facility must be secured to restrict public access.

3. Worker Protections

- (a) Solomon workers with access to PCB storage area shall wear or use protective clothing or equipment at the Facility to protect against dermal contact with or inhalation of PCBs or material containing PCBs.
- (b) Solomon shall comply with all applicable health and safety standards, as required by federal, state and local regulations and ordinances.
- (c) Solomon shall comply with the safety provisions of the Solomon Application.
- (d) All employees hired subsequent to the date of this Approval must be trained, as specified in Solomon's personnel training program and training schedule included in the Application. In addition, Solomon must ensure that personnel who are directly involved with handling PCBs or operating the scrap metal recovery oven are familiar with the requirements of this Approval, and the regulatory requirements under 40 CFR § 761.
- (e) Within 30 days of the effective date of this Approval, Solomon shall update as necessary the manual it uses to train workers with access to PCB storage areas so that it includes, but is not necessarily limited to, the regulatory requirements of the PCB Regulation, with emphasis in the requirements of the "Spill Cleanup Policy," 40 CFR § 761 Subpart G; the conditions of this Approval; and the SPCC Plan submitted and approved as part of the Solomon Application.
- (f) Within 30 days of the effective date of this Approval, Solomon shall update as necessary the manual it uses to train workers with access to the scrap metal recovery oven so that it includes, but is not necessarily limited to; the regulatory requirements for the scrap metal recovery oven; the conditions of this Approval; the contingency plan and requirements; and the SPCC Plan submitted and approved as part of the Solomon Application.
- (g) Solomon shall make its updated training manual available to the EPA upon request. The EPA shall have the right to review the updated Solomon training manual and require Solomon to correct any deficiencies in a prompt manner.
- (h) Within 60 days of the effective date of this Approval, Solomon shall ensure proper training of all existing workers that have, or will have, access to PCB storage areas and the metal recovery oven in accordance with the updated Solomon training manuals.
- (i) All new workers must complete training in accordance with the updated Solomon training manuals prior to entering PCB storage areas or operating the scrap metal recovery oven. In addition to initial training, all workers with access to PCB storage areas or the scrap metal recovery oven must complete annual refresher training in accordance with the updated Solomon training manual.

- (j) Except as provided in condition D.3(j), the PCB concentration of non-porous surface areas located outside of PCB storage areas shall not exceed $10 \mu\text{g}/100 \text{ cm}^2$ and all porous surface located outside of PCB storage areas shall not exceed 1 ppm.
- (k) The PCB concentration of food handling areas, including any locations where food or drink is prepared, stored or consumed shall not exceed a concentration of $1 \mu\text{g}/100 \text{ cm}^2$ for non-porous surfaces and 1 ppm for porous surfaces.
- (l) Any person entering and leaving the PCB storage area must do so through a clean-in/clean-out station.
- (m) The PCB concentration of non-porous surface areas located in the clean-in/clean-out station shall not exceed $10 \mu\text{g}/100 \text{ cm}^2$ and all porous surfaces located in the clean-in/clean-out station shall not exceed 1 ppm.
- (n) In the event the concentration of PCBs exceeds the levels set forth in conditions D.3(j) through D.3(m), Solomon shall immediately begin decontamination of the affected area in accordance with applicable requirements of the PCB Regulations and this Approval.
- (o) Solomon shall not encapsulate any PCB-containing areas regardless of PCB concentration levels without specific prior written approval from the EPA.
- (p) Solomon must report incidences of injury or exposure to PCBs to the Region 7 PCB Coordinator within 24 hours of becoming aware of such injury or illness.

4. PCB Spills and Releases

- (a) Solomon has prepared and submitted an SPCC Plan that the EPA approved as part of the Solomon Application. Solomon shall follow the spill prevention measures outlined in the SPCC Plan and implement applicable control measures specified in the SPCC Plan for qualifying spill events.
- (b) Spills of PCBs shall be cleaned up in accordance with the requirements of the PCB Spill Cleanup Policy at 40 CFR § 761, Subpart G of the PCB Regulation, as applicable.
- (c) Solomon shall comply with the applicable PCB spill reporting requirements under 40 CFR § 761.125; the Clean Water Act; and the Comprehensive Environmental Response Compensation and Liability Act. Notification of the EPA Regional Office of any PCB spill as required under 40 CFR § 761.125 shall be made to the Region 7 PCB Coordinator. A written report of the reportable spill incident under 40 CFR § 761.125 must be submitted within five business days following the incident.
- (d) Any wastes generated as a result of cleanup of a PCB spill or decontamination of any material contaminated by a PCB spill shall be disposed of in accordance with

40 CFR § 761.61.

- (e) Solomon shall immediately report to Region 7 PCB Coordinator if, as a result of any unauthorized entry or operation at the Facility, PCBs were released. To the extent known, such report shall include a description of the unauthorized entry or operation, the resulting release of PCBs, and any corrective action taken by Solomon. Examples of unauthorized entry or operation at the Facility to be reported to the EPA include, but are not be limited to, tampering, destruction, or loss at the Facility which caused the release of PCBs.

5. Emergency Provisions

- (a) Solomon shall follow the SPCC Plan that was submitted and approved as part of the Solomon Application whenever there is a fire, explosion, or release of PCBs or hazardous constituents. Solomon shall document the date, reason, and all corrective actions taken for any occurrence or implementation of the SPCC Plan.
- (b) Copies of the updated Solomon training manual, SPCC Plan, and this Approval shall be maintained and be made available to all workers at the Solomon Facility.
- (c) Lists of emergency contacts, telephone numbers, and emergency exit routes shall be posted in prominent locations throughout the Facility minimally including employee break rooms, main exits, and next to telephones available to employees.
- (d) The Facility shall, at a minimum, be equipped with the following:
 - (i) an internal communications or alarm system capable of providing immediate emergency notification (voice or signal) to facility personnel;
 - (ii) devices, such as a telephone or a hand-held two-way radio, which is immediately available at the scene of operations, capable of summoning emergency assistance from local police departments, fire departments, and State or local emergency response teams;
 - (iii) portable fire extinguishers, fire control equipment, spill control equipment, and decontamination equipment; and
 - (iv) water at adequate volume and pressure to supply fire hose streams or foam equipment.
- (e) Solomon shall test and maintain the equipment at the Facility in accordance with the manufacturer's recommendations to ensure proper operation in time of emergency. In the event any of the equipment specified above was manufactured by Solomon, Solomon shall establish and follow a testing and maintenance plan for those manufactured items.
- (f) Whenever PCBs are being poured, mixed or otherwise handled, Solomon shall ensure that all workers involved in the operation will have immediate access to an

internal alarm or emergency communication device, either directly or through visual or voice contact with another worker.

- (g) At all times, there shall be at least one worker present at the Solomon Facility or on call with the responsibility for coordinating all emergency response measures. This worker shall have immediate access to the entire Facility and to a device, such as a telephone or a hand-held two-way radio, immediately available at the scene of operation capable of summoning external emergency assistance. This worker must have the authority to commit the resources needed to carry out the contingency measures of this Approval, the Solomon Application, the PCB Regulation or that are otherwise appropriate.
- (h) Within 30 calendar days from the initial issuance of this Approval, Solomon shall provide a written description of storage activities, stored materials, and emergency procedures, as described in the Solomon Application, to local police departments, hospitals, and state and local emergency response teams that may be called upon to provide emergency services, and shall provide updates of the written description as necessary.
- (i) Solomon shall review and promptly modify the SPCC Plan whenever:
 - (i) such plan fails in an emergency;
 - (ii) Solomon changes the Facility's design, construction, operation, maintenance or emergency response policies;
 - (iii) a circumstance arises that materially increases the potential for fires, explosions, or releases of PCBs or hazardous constituents;
 - (iv) the list of emergency coordinators changes;
 - (v) the list of emergency equipment changes;
 - (vi) a revision is warranted to prevent a risk of injury to health and the environment; or
 - (vii) the EPA determines that a revision to such plan is necessary.
 - (viii) Solomon shall submit proposed modifications to its SPCC Plan to the EPA in the form a modified application, and shall not implement such modifications until it receives written EPA approval.

6. Recordkeeping and Reporting

- (a) Solomon shall comply with all applicable recordkeeping and reporting requirements of the PCB Regulation, including but not limited to, annual records, annual document logs and annual reports as required by 40 CFR §761.180.
- (b) Solomon shall maintain weekly records of storage inventories which are sufficient

to determine compliance with the maximum storage capacity and related requirements for PCBs and PCB Items specified in condition B.2.

- (c) Solomon must maintain records demonstrating compliance with the requirements of 40 CFR § 761.180(a) and (b) and this Approval:
 - (i) the documentation of PCB content, sampling and analytical testing requirements of paragraph B.7(e);
 - (ii) the inspection requirements of paragraph B.8(b), which shall be in the form of inspection records;
 - (iii) the cleanup and disposal requirements of paragraph B.8(c);
 - (iv) the repair requirements of paragraph B.8(d);
 - (v) the sampling and monitoring requirements of paragraph C.4;
 - (vi) the contingency plan requirements of paragraph C.5, which shall include the date and reason of any occurrence or implementation of the contingency plan and document all corrective actions taken;
 - (vii) the worker training requirements of paragraph D.3(i), which shall include the name and title of the individual, the date(s) of the training, and a signature sheet certifying that the signatory completed training in accordance with the updated Solomon training manuals on the date specified;
 - (viii) the detection of exceedance(s) and decontamination requirements under conditions D.3(j) through D.3(n).
 - (ix) the spill, release, disposal, reporting and notification requirements of paragraph D.4;
 - (x) the equipment maintenance and testing requirements of paragraph D.5(d);
and
 - (xi) the emergency responder notification requirements of paragraph D.5(g).
- (d) Solomon shall maintain copies of the manifests, either paper copies or electronically available in an online e-Manifest account, and certificates of disposal for all PCBs and PCB Items that have been stored at the Solomon Facility. Copies of certificates of disposal shall be provided to the generator within 30 calendar days of receipt by Solomon of documentation of final disposal of all materials resulting from the commercial storage of the generator's PCBs and PCB Items.
- (e) All records relating to sampling, analysis, and quality assurance required by the PCB Regulation or this Approval shall include the following:

- (i) exact date, place, and time of each sample collected;
 - (ii) volume of each sample collected;
 - (iii) name of person collecting each sample;
 - (iv) name of analyst;
 - (v) date and time of analysis;
 - (vi) the analytical techniques or methods used for each sample;
 - (vii) the analytical results including chromatographs, calculations, and other raw data;
 - (viii) calibration records and maintenance records of sampling equipment and analytical instrumentation; and,
 - (ix) records of quality assurance/quality control activities.
- (f) All records required to be maintained either by the PCB Regulation or this Approval shall be legible, prepared in black ink, or typed. Any modification or correction of the records must be initialed and dated by a Solomon worker authorized to make such change. If the recordkeeping is maintained electronically, Solomon shall produce and maintain hard copy printouts on a monthly basis and shall back-up the data on a daily basis. During any period of time in which the electronic recordkeeping system is rendered non-operational, Solomon must implement a comparably reliable alternate recordkeeping system in its place.
- (g) All records required to be maintained either by the PCB Regulation or this Approval shall be maintained at one centralized location at the Solomon Facility, and shall be made available for inspection by EPA authorized representatives. When Solomon ceases operations, all such records shall be made available to the EPA at the Solomon Facility for a period of at least five years following cessation of operations. If Solomon is unable to comply with this condition because it is no longer in control of the site, it shall comply by making such records available at an alternative location proposed by Solomon and approved by the EPA in writing.
- (h) All reports, notifications and other information requested to be provided to the EPA shall be signed by a Solomon officer or by the Solomon Environmental and Safety Manager.
- (i) Unless otherwise specified herein, reports, notification, mail or other submittals required to be submitted to the EPA under this Approval shall be sent to

PCB Coordinator (Attn: Annah Murray)
U.S. Environmental Protection Agency, Region 7 11201

Renner Boulevard, Lenexa, KS 66219

- (j) No recordkeeping, report or communication required under this Approval shall qualify as a self-audit or voluntary disclosure under the EPA audit, self-disclosure or penalty policies.

7. Closure and Financial Assurance

- (a) Solomon shall maintain adequate financial assurance as specified in 40 CFR § 761.65(g) and 40 CFR § 264, Subpart H, to provide for:
 - (i) funding in accordance with the approved closure plan; and
 - (ii) compensating others for bodily injury and property damage caused by accidents arising from operations of the facility.
- (b) The Closure Plan and Closure Cost Estimate submitted as part of the Solomon Application is deemed acceptable under 40 CFR § 761.65(e) and is incorporated by reference into this Approval. Solomon shall comply with the approved Closure Plan and Closure Cost Estimate.
- (c) Solomon has demonstrated financial assurance for closure of the Solomon Facility as required by 40 CFR § 761.65(g). Solomon may not modify its mechanism for financial assurance without prior written approval from the EPA. Solomon shall submit proposed changes to its financial assurance mechanism to the EPA Region 7 PCB Coordinator in the form a modified application and shall not implement such modification until it receives written EPA approval.
- (d) Solomon shall adjust the Closure Cost Estimate annually to reflect inflation as required by 40 CFR § 761.65(f)(2) within 30 days after the close of Solomon's fiscal year. Solomon shall submit a copy of the annually adjusted Closure Cost Estimate to the EPA no later than the annual anniversary of the effective date of this Approval. If the annual adjustment to the Closure Cost Estimate changes the required amount such that it exceeds the face value of the existing financial assurance mechanism, Solomon shall make a corresponding increase to its financial assurance mechanism. In the event modification to the financial assurance mechanism amount is required, Solomon shall submit documentation of adequate financial assurance to the Regional Administrator or his or her delegate.
- (e) Solomon shall modify the Closure Plan and Closure Cost Estimate whenever any changes in ownership, operating plans, maximum storage capacity or facility design affect the Closure Plan; whenever there is a change in the expected year of closure; or whenever unexpected events during closure require modification. If Solomon becomes aware of information indicating that the estimated costs associated with performing closure of the Solomon Facility may exceed the current Closure Cost Estimate approved by the EPA, Solomon shall modify the Closure Plan and/or Closure Cost Estimates, as appropriate. Solomon shall submit proposed modifications to its Closure Plan and/or Closure Cost Estimate

to the EPA in the form of a modified application and shall not implement such modifications until it receives written EPA approval. Solomon shall base modifications to Closure Cost Estimates on maximum cost conditions, as specified in 40 CFR § 761.65(f)(i) - (iv), and shall submit them to the EPA with a “certification,” as defined in 40 CFR § 761.3.

- (f) When an EPA approved modification to the Facility's Closure Plan increases the Closure Cost Estimate, or when the EPA approves a modification which increases the Facility's Closure Cost Estimate, Solomon shall make corresponding increases to its financial assurance and provide documentation to the EPA of such change no later than 30 days after such modification is approved by the EPA.
- (g) When an EPA-approved modification to the Facility increases the maximum storage capacity in Condition 3.a, Solomon shall notify the EPA Region 7 PCB Coordinator in writing no later than 30 days from the completion of the modification and either establish a new financial assurance or amend the existing financial assurance mechanism. The new or amended financial assurance mechanism must be established and activated no later than 30 days after notification of the completion of the modification but prior to the use of the modified portion of the Facility.
- (h) Solomon shall keep a copy of the most recently approved Closure Plan, Closure Cost Estimate and financial assurance document(s) at the Facility and make such documents available to EPA authorized representatives, upon request.
- (i) Solomon shall notify the Regional Administrator or his or her delegate at least 60 days prior to the date it expects to begin closure. The date Solomon “expects to begin closure” shall be no later than 30 days after the date on which Solomon receives its final quantities of PCB waste for storage.
- (j) Upon termination of the operation, Solomon shall proceed according to the provisions of the Closure Plan submitted to and approved by the EPA. As used in this paragraph, "termination of the operation" includes cessation of operations required by expiration, termination, or revocation of this Approval.
- (k) In accordance with Solomon's approved closure plan, Solomon shall remove all PCB waste in storage at the Solomon Facility within 90 days after receiving the final quantity of PCB waste for storage and shall complete closure activities within 180 days after receiving the final quantity of PCB waste for storage.
- (l) Upon termination of the operation, Solomon shall proceed according to the provisions of the Closure Plan submitted to and approved by the EPA. As used in this paragraph, “termination of the operation” includes voluntary cessation of operations and cessation of operations required by expiration, termination, or revocation of this Approval.
- (m) During the closure period, all contaminated systems, components, equipment, structures, and soils shall be disposed of in accordance with the disposal requirements of 40 CFR § 761, Subpart D, or, if applicable, decontaminated in

accordance with the levels specified in the PCB Spill Cleanup Policy, 40 CFR § 761, Subpart G.

- (n) If PCB waste is removed from the storage facility during closure, Solomon will become a generator of PCB waste subject to the generator requirements of 40 CFR § 761, Subpart J.
- (o) Within 60 days of completion of closure of the Solomon Facility, Solomon shall submit to the EPA Regional Administrator or his or her delegate a certification that the Facility has been closed in accordance with the approved closure plan. The certification shall be signed by Solomon and by an independent registered professional engineer.

Remainder of this page intentionally left blank.

DECISION TO APPROVE

The EPA Region 7 has determined that the criteria for approval to engage in the commercial storage and disposal of PCB waste as set forth in 40 CFR § 761 have been met. Specifically, the Application demonstrates that Solomon's storage and disposal facility, storage capacity, employee qualifications, closure plan, and financial assurance for closure satisfy applicable requirements and that operation of the facility, when conducted in accordance with the conditions of this Approval and all applicable provisions of the PCB regulations, will not pose an unreasonable risk of injury to health or the environment. The EPA approves Solomon's Application to commercially store and dispose of PCBs and PCB Items at the Solomon Facility.

This Approval shall become effective the date the Director of Air and Waste Management Division, Region 7, acting on Solomon's Application, signs it and shall expire 10 years from such date, unless suspended, revoked or terminated, or administratively continued, in accordance with the conditions of this Approval, or unless otherwise authorized under applicable law.

This approval does not relieve Solomon from compliance with all applicable federal, state and local regulatory requirements, including the federal PCB regulations at 40 CFR § 761.

3/27/19

Date



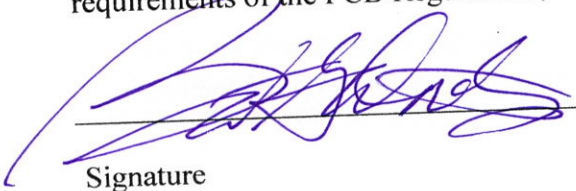
Mark. A Smith, Director
Air and Waste Management Division
EPA Region 7

Remainder of this page intentionally left blank.

CERTIFICATION FORM

I, Bryant G. Dooly, CFO certify that I
Print Name of Authorized Solomon Representative, Title

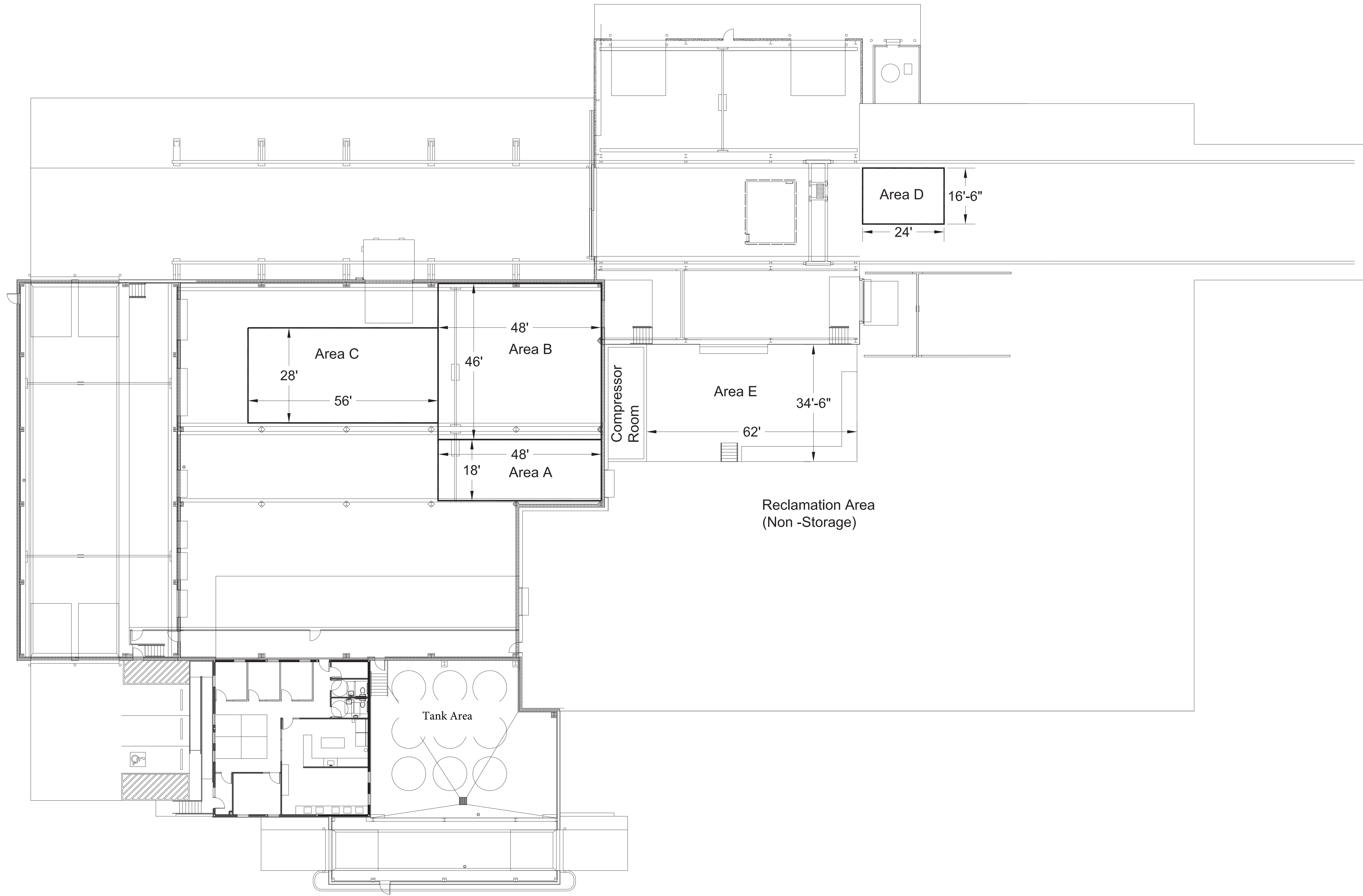
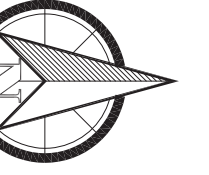
have received and reviewed the Approval to Commercially Store and Dispose of Polychlorinated Biphenyl Waste, 2019 renewal, at the Solomon Facility in Solomon, KS, on this 5th day of April, and year of 2019, and hereby agree to abide by all Conditions of the Approval and all applicable requirements of the PCB Regulations, 40 CFR § 761.


Signature

4/5/19
Date

Remainder of this page intentionally left blank.

Attachment A. Commercial Storage



Title: Commercial Storage		Drawn: JW	Date: 03/27/2012
 103 West Main / P.O. Box 245 Solomon, Kansas 67480 Telephone: 800-234-2867 Fax: (785) 856-2502 www.solomoncorp.com		Page: 1 of 1	File: k.dwg
<small>This drawing is the property of Solomon Corporation. It is not to be printed, photographed, copied, loaned or used without permission.</small>			