

LEARN FROM THE BEST!

2023 Green Power Leadership Awards Winners Webinar

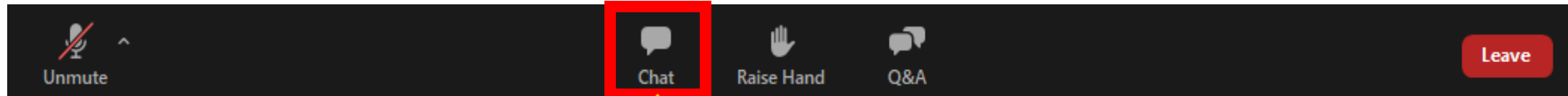


U.S. EPA's Green Power Partnership

March 27, 2024



Webinar Logistics



Resources shared by Presenters, Questions for Presenters, Tech Support

- The webinar will be recorded and available on the GPP website
- All attendees will be muted upon entering the webinar
- Please submit questions in the Chat box
- If we are unable to answer all of the questions, we will follow up with you separately
- If you are experiencing any technical difficulties, please send a message through the Chat box or send an email to gabby.vinyard@erg.com

Today's Speakers



Vince Digneo
Head of Sustainability, Climate & Clean Energy
Palo Alto Networks



Amber Sells
Financial Analysis Manager,
Elevance Health



Dr. Ayodele Akinola
Executive Director,
Truckee Meadows Community College



Peden Young
Senior Manager for Energy,
The Home Depot





Background



- The awards serve to recognize the leading actions of organizations that significantly advance the development of the voluntary green power market
- The Green Power Leadership Awards (GPLAs) were first presented in 2001
- The GPLAs are presented annually at the Renewable Energy Markets™ Conference
- Co-sponsored by EPA's Green Power Partnership (GPP) & Center for Resource Solutions (CRS)
- EPA and CRS administer their awards separately

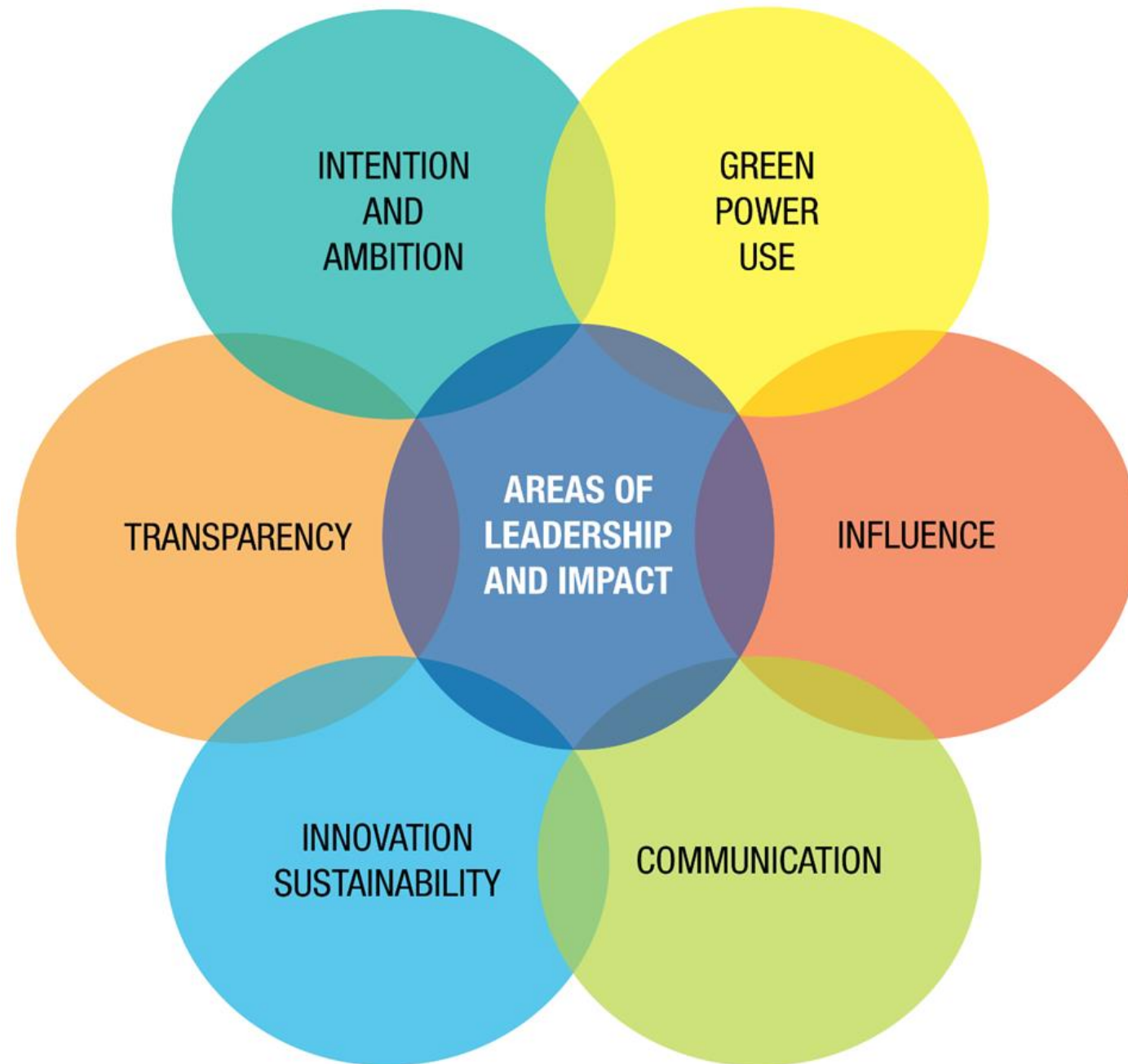


2024
GREEN POWER
Leadership Awards



Key GPLA Dates

- **March 11, 2024:** Application period opened
 - **April 19, 2024:** Final application deadline
 - **Summer 2024:** Winner and non-winner notifications
 - **September 16-18, 2024:** REM™ Conference, including the Awards Ceremony
- 
- 





Vince Digneo
Head of Sustainability,
Climate & Clean Energy
Palo Alto Networks



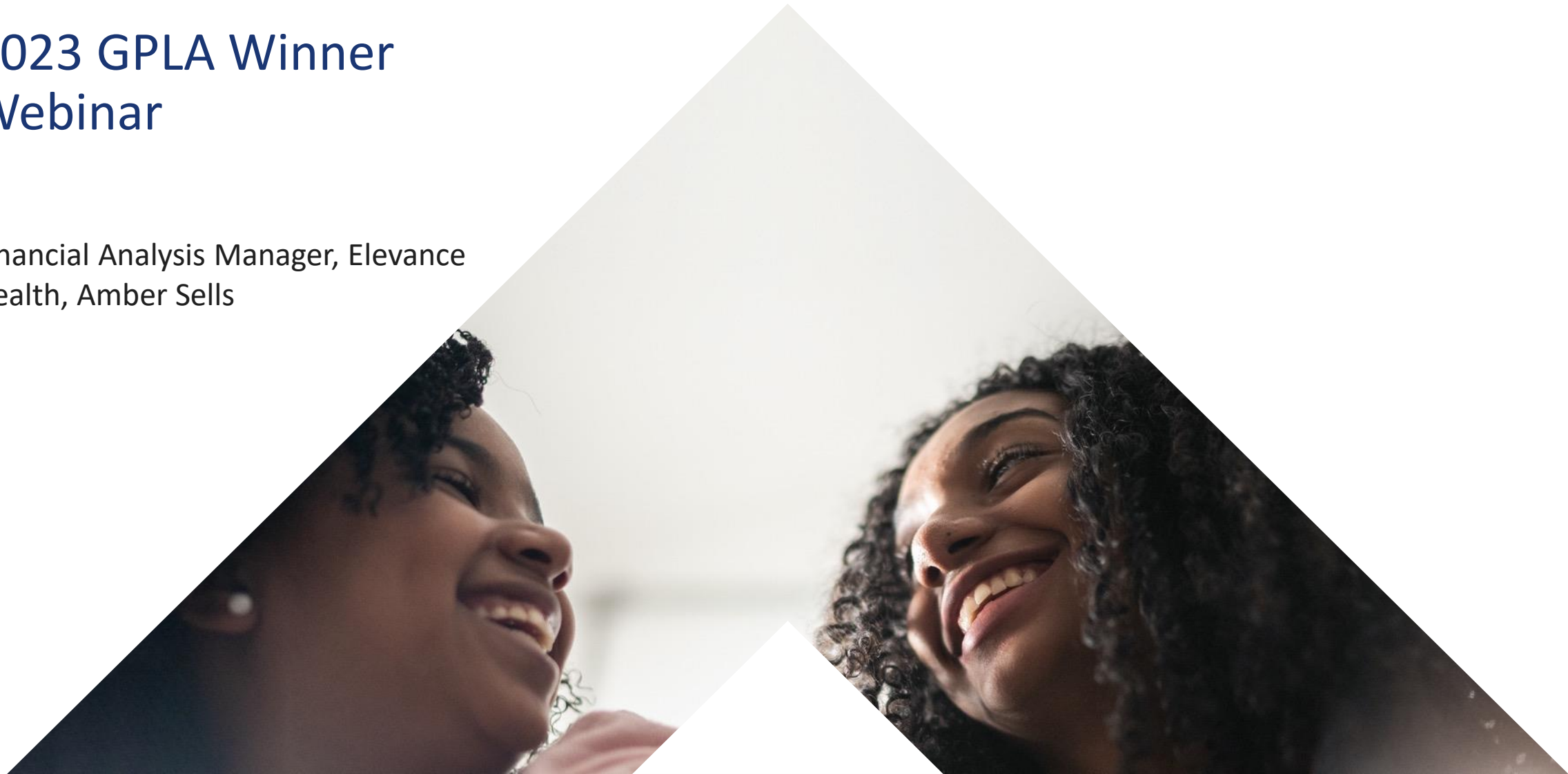


Amber Sells
Financial Analysis Manager,
Elevance Health



2023 GPLA Winner Webinar

Financial Analysis Manager, Elevance
Health, Amber Sells



GPLA Roadmap

Who We Are

Why Climate Change is Important to Us

Our Journey in GHG Mitigation & Recognition

Components of Green Power Leadership Award

Elevance Health Overview

approximately
47 million
 total medical members in
 affiliated health plans

more than
115 million
 total lives served

Q4 2023 data




\$170 billion
 total operating revenue in 2023



104,000 Associates



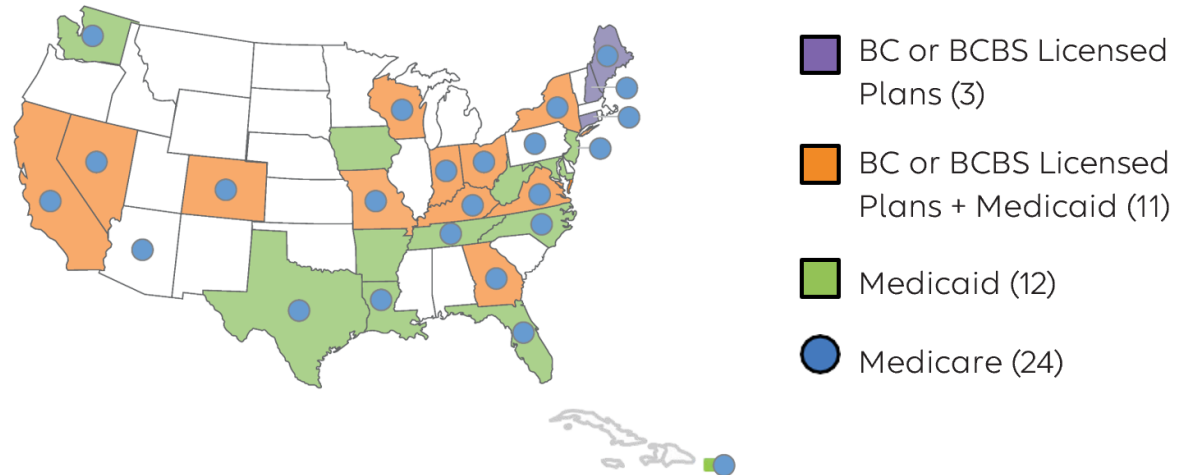
77%
 of Elevance Health's
 Associates are female*



51%
 of Elevance Health's
 associates are racially or
 ethnically diverse*

*This is based on EEO-1 Report data as of 12/31/23 and includes U.S. associates only

Purpose: Improve the health of humanity.



24 Medicare Markets
 Includes Puerto Rico

**14 States in
 BC or BCBS Markets**

23 Medicaid Markets
 Includes D.C. & Puerto Rico

Our Evolved Brand Portfolio



Anthem Blue Cross and Anthem Blue Cross and Blue Shield remain our go-to-market brands in the 14 Blue states. It's the name consumers are most familiar with as a trusted health care partner through our affiliated health plans.



Select Medicare, Medicaid and Commercial Plans in non-Blue states are unifying under the Wellpoint brand over the next few years.



Our services businesses are unifying under the brand Carelon to solve complex challenges and support whole health across the entire healthcare continuum.



Climate Change Has Widespread and Significant Health Impacts

There have been increasing impacts from high heat, wildfires, and powerful storms which are increasingly becoming a top priority for the health community.

Climate Change Exacerbates Health Inequities



- Climate change **amplifies the effects of physical, social and behavioral drivers of health**, triggering conditions that threaten the achievement of equitable, population-wide health.¹
- **Black individuals are 40% more likely than non-Black individuals** to live in areas with highest projected increase in mortality rates due to climate-driven changes in extreme temperatures.¹

The Greatest Threat to Public Health

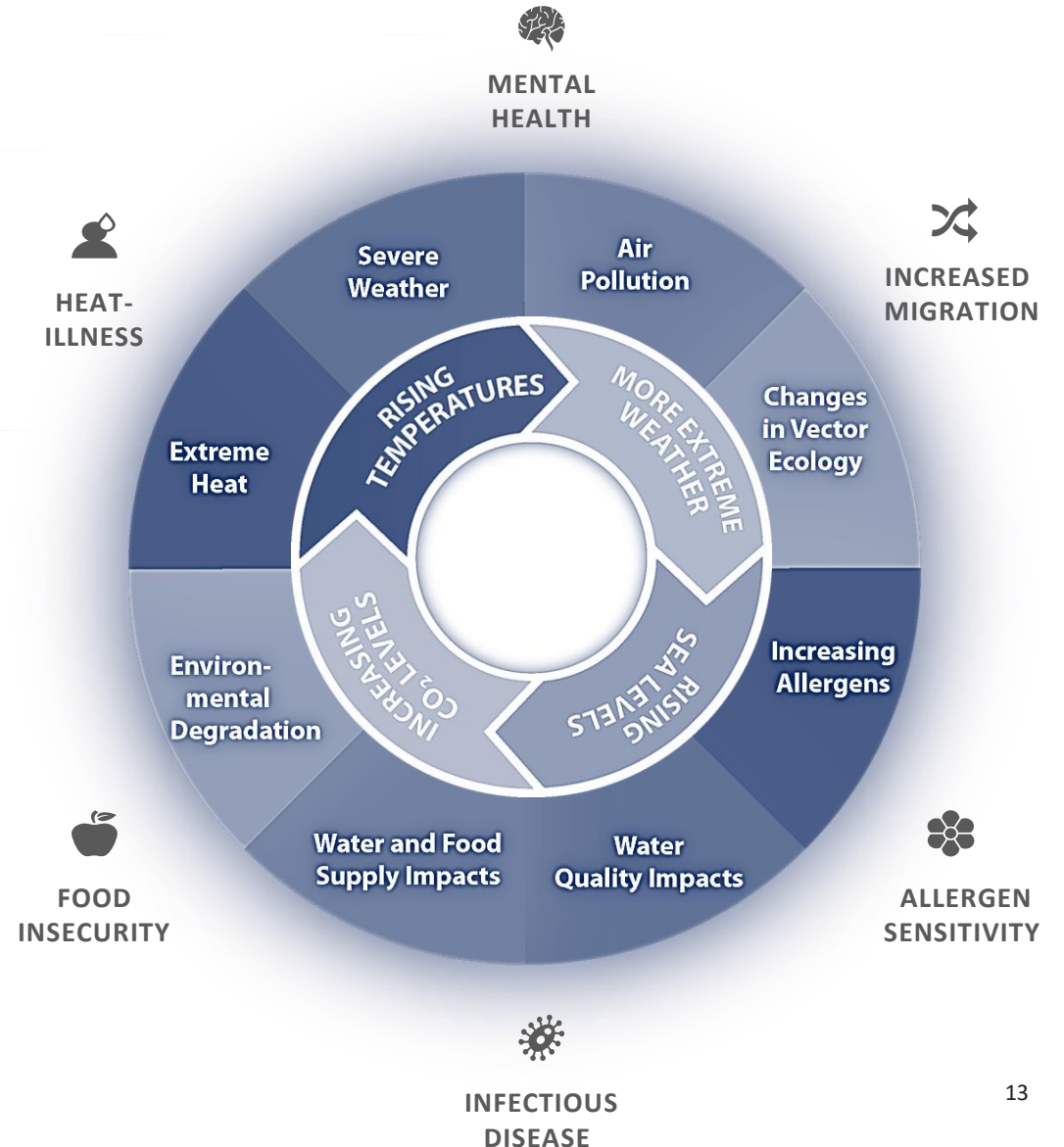


- Over 200 medical journals recognized climate change as the “**greatest threat**” to global public health.
- Stillbirth risk is **46% higher during a heat wave**, with the risk increasing by 5% for each additional degree Fahrenheit.²

Healthcare Must Adopt Climate Strategies



- Beyond being impacted by climate change, US health care organizations are also significant contributors to global warming, **adding 8-9% of total emissions**.³
- Research shows **increased risk for ED visits** for many conditions during certain climate events, which also presents an opportunity for proactive action to improve outcomes.^{4,5,6}



¹Social Vulnerability Report

⁴JAMA

²The Impact of Climate Change on Health

⁵Environmental Health Perspectives

³Health Care Without Harm

⁶Reuters

Elevance Health is an Industry Leader to Mitigate Emissions

Our greenhouse gas (GHG) mitigation strategy is among the most advanced in the healthcare industry, with past commitments such as renewable energy and carbon offsets setting a foundation for joining the HHS Health Care Sector Climate Pledge



PAST COMMITMENTS

We committed to **100% renewable energy** in 2019 and were the **first in our sector** to achieve carbon-neutral operations in 2022.

We established a premium renewable energy certificate swap program as part of our power purchase agreements to fund carbon offsets and **deliver an operating gain of >\$21M** since 2020.



CONTINUED EFFORTS

As an initial signatory to the **Health Care Sector Climate Pledge** with HHS, we committed to:

- Achieve “**net zero**” GHG emissions by 2050 and publicly report progress
- Complete an emissions inventory including **Scope 3 emissions**
- Develop **climate resilience plans** for their facilities and communities
- Designate an **executive lead** to supervise and guide this work



SCOPE 1, 2, AND 3 EMISSIONS

Scope 1 & 2: Reduced emissions via the 100% renewable strategy; emissions are currently “0” as a result of purchasing offsets for remaining, residual emissions.

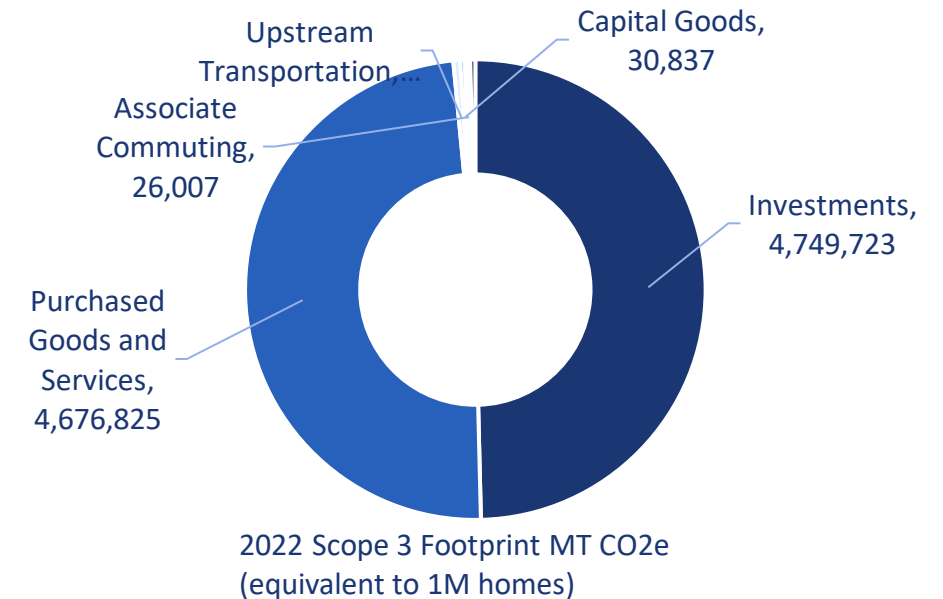
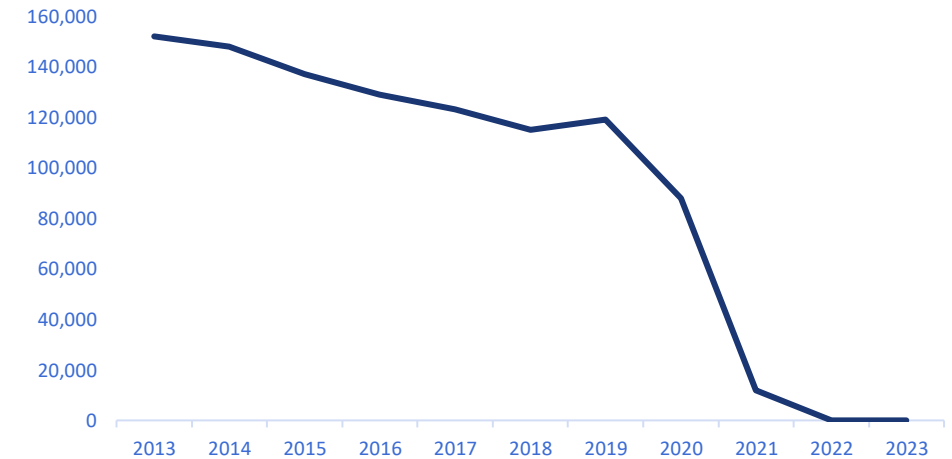
Scope 3 (investments): Assessed ~70% of the public investment portfolio for capacity to align with a pathway to limit warming to 2° C above preindustrial levels.

Scope 3 (purchased goods and services): Implemented a strategy for supply chain; >70% of indirect supplier spend has scope 1 & 2 science-based greenhouse gas emissions targets.

NOTE: Benefit Expense and Providers are not included in Scope 3 inventory at this time. Also, note suppliers will need to include scope 3 for SBTi.



Direct Operational Scope 1/2 Emissions MT CO2e



2023 Sustainability Accomplishments and Recognition

100%

Renewable Electricity Since 2021

100%

Carbon Neutral Operations Since 2022

86%

2022 Emissions Reductions vs 2019



EPA Green Power Partnership

Recognized as EPA's Green Power Leadership Award in 2023 for green power use and sector-leadership.



DOE Better Buildings Partner

Named Better Buildings Climate Goal Achiever with 86% emission savings and -15% EUI savings in late 2023.



RE100 Partner

Climate Group awarded Elevance Health 2023 RE100 Leadership Award of Beyond 100%.

Short-listed for 2023 RE100 Enterprising Leader.

Components of GPLA - Green Power Use



Climate Change + Health Equity

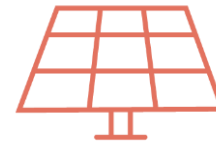
Climate change is also a health equity issue as it has a more significant impact on certain groups of people, exacerbating pre-existing inequalities.



HHS Health Care Sector Net Zero Pledge

Healthcare is one of the most carbon-intensive service sectors in the industrialized world.

We are proud to be an initial signatory to the HHS Health Care Sector Net Zero Pledge.



15-Year Virtual PPAs

15-year virtual purchase power agreements strategically selected solar projects in the most enterprise-intense purchased electricity region.



REC Swap

We retire project RECs to cover PJM MWh, selling capacity RECs to procure certified Green-e RECs and International environmental attributes (EACs) to achieve 100% renewable electricity.

Components of GPLA - Communications



Mediums

- Websites
- Press Releases
- Annual Reporting
- Investor Communications/Calls
- Internal News Articles



2020 PPA Ribbon Cutting

- Virginia Plan President
- Governor of Virginia



Leverage Fortune 20 Brand

- EPA Green Power
- RE100
- HHS Healthcare Sector Pledge
- Department of Energy Better Buildings
- WEF Zero Health Gaps Pledge
- UN Global Compact

Components of GPLA - Influence



Educate stakeholders

- Educating customers, suppliers, investors, communities, and associates on connection between climate, health, and health equity.



Engaging Suppliers

- In 2022, we engaged with suppliers on setting their own GHG reduction targets and currently >70% by spend have science-based targets.



RE100

- Early signatory to RE100 and since that time several sector peers committed to 100% renewable electricity



Solar Demonstrations

- Installed solar projects at offices in California and Virginia to engage with our associates on renewables.

Components of GPLA - Transparency

Sustainability Reporting

- Set goals
- Measure Performance
- Manage Change

Disclosure

- Transparency and accuracy are key to disclosing scopes 1, 2, and 3 emissions

Assurance

- All of our GHG emissions data undergo an annual third-party assurance process
- Scopes 1 and 2 are reasonably assured

Components of GPLA - Environmental Equity



Elevance Health Foundation

We support community partners focused on advancing health equity via the Elevance Health Foundation.

Solar Power to House the Homeless

In March 2023, we provided funding to an affordable housing project that included energy efficient design and rooftop solar.







Dr. Ayodele Akinola
Executive Director,
Truckee Meadows Community College



➔ Access

👥 Workforce

🎓 Success

↔ Close The Achievement Gap

Truckee Meadows Community College

March 27, 2024





TMCC Offerings:
Academic Programs
Vocational Training
Community Education Courses



Four Convenient Locations



William N. Pennington Applied Technology Center

Get your hands on the most modern technology throughout the learning labs.



William N. Pennington Health Science Center

This state-of-the-art space offers nursing simulation rooms, a radiologic technology lab and hosts TMCC's Fire Academy.



Meadowood Center

Located near Meadowood Mall, with newly upgraded CNA and veterinary nursing spaces, and houses many professional development and personal enrichment programs.



Dandini Campus

Our beautiful main campus is home to many student services, the Sports and Fitness Center, and soccer field.

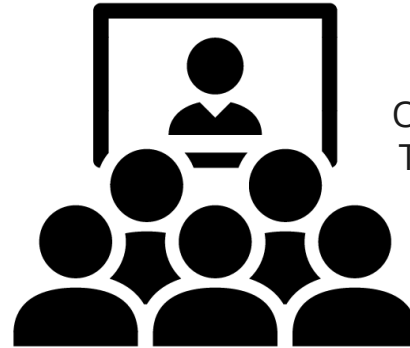


TMCC: A Comprehensive *Community* College

Faculty



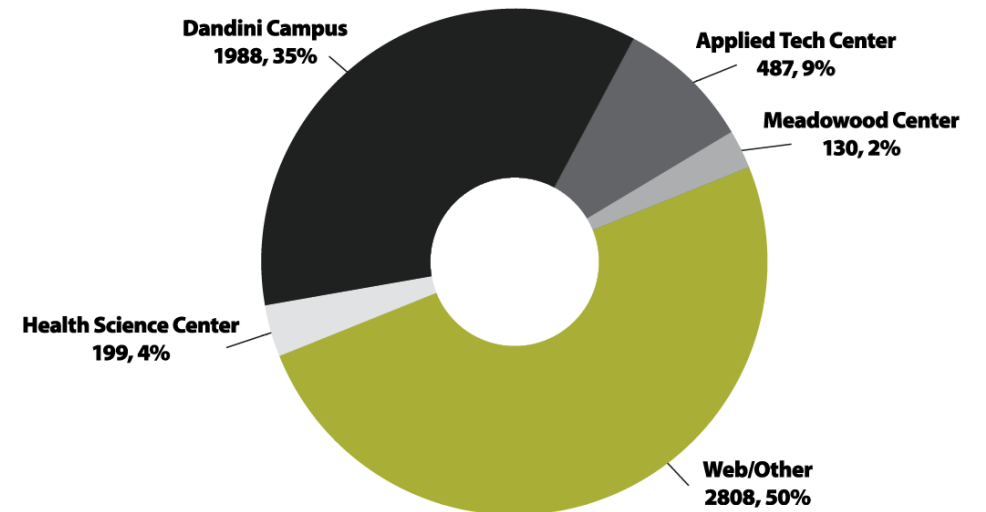
FT Teaching Faculty	155
PT Teaching Faculty	346
Administrative Faculty	143
Executives	17



54%

OF STUDENT CREDIT HOURS ARE TAUGHT BY FULL-TIME FACULTY

FTE Generated by Campus Location



Educational Goal

WOMEN
54%

EARN A DEGREE OR CERTIFICATE
68%

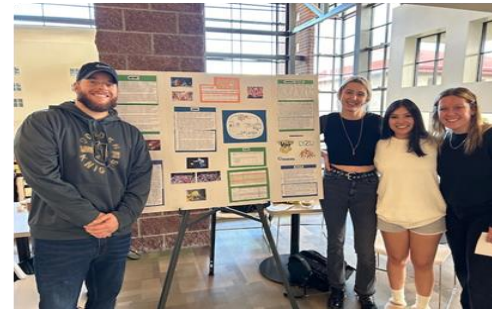
NOT DEGREE-SEEKING
32%

Personal Interest, Improve Job Skills, Take a Class for Transfer, etc.

TMCC SPACES

Operates Approx. 720,582 s.f.

- Classroom
- Library
- Research Lab
- Study
- Office
- Conference Room
- Athletics
- General Use
- Facilities Support



Green Power Use Journey



Target & Progress

100%

Generation

~10%

Power Purchase Agreement

Offset 100%

Award

EPA



Diverse Models of Emissions Reduction



Implemented Various Models as Part of Commitment to Sustainability and Environmental Stewardship

1. Renewable Energy Use
2. Green Power Purchase
3. Sustainability Education
4. Community Engagement
5. Campus Operations Initiatives
 - a. **Design & Construction**
 - b. **HVACR**
 - c. **Custodial**
 - d. **Maintenance**
 - e. **Grounds**



Long Term Renewable Procurement Strategies

Commitment to Sustainability and Renewable Energy Evidences

1. Renewable Energy Agreements
2. On-site Renewable Energy Generation
3. Energy Efficiency Measures
4. Education and Training Programs
5. Partnerships and Collaborations to Reduce Carbon Footprints
6. Sustainability Planning and Governance



Direct Project Engagement Pathways

Enhances Our Sustainability Efforts

1. A Sustainable Campus Infrastructure
2. Student and Faculty Research Projects
3. Curriculum Integration
4. Campus Operations and Practices
5. Sustainability Events and Campaigns
6. Student Clubs and Organizations
7. Green Building Certification
8. Water Conservation Initiatives
9. Bike Infrastructure
10. Food Waste Reduction Program
11. Community Garden
12. Electric Vehicle Charging Stations
13. Energy Audit and Facilities Condition Assessment
14. Native Landscaping Restoration



➔ Access

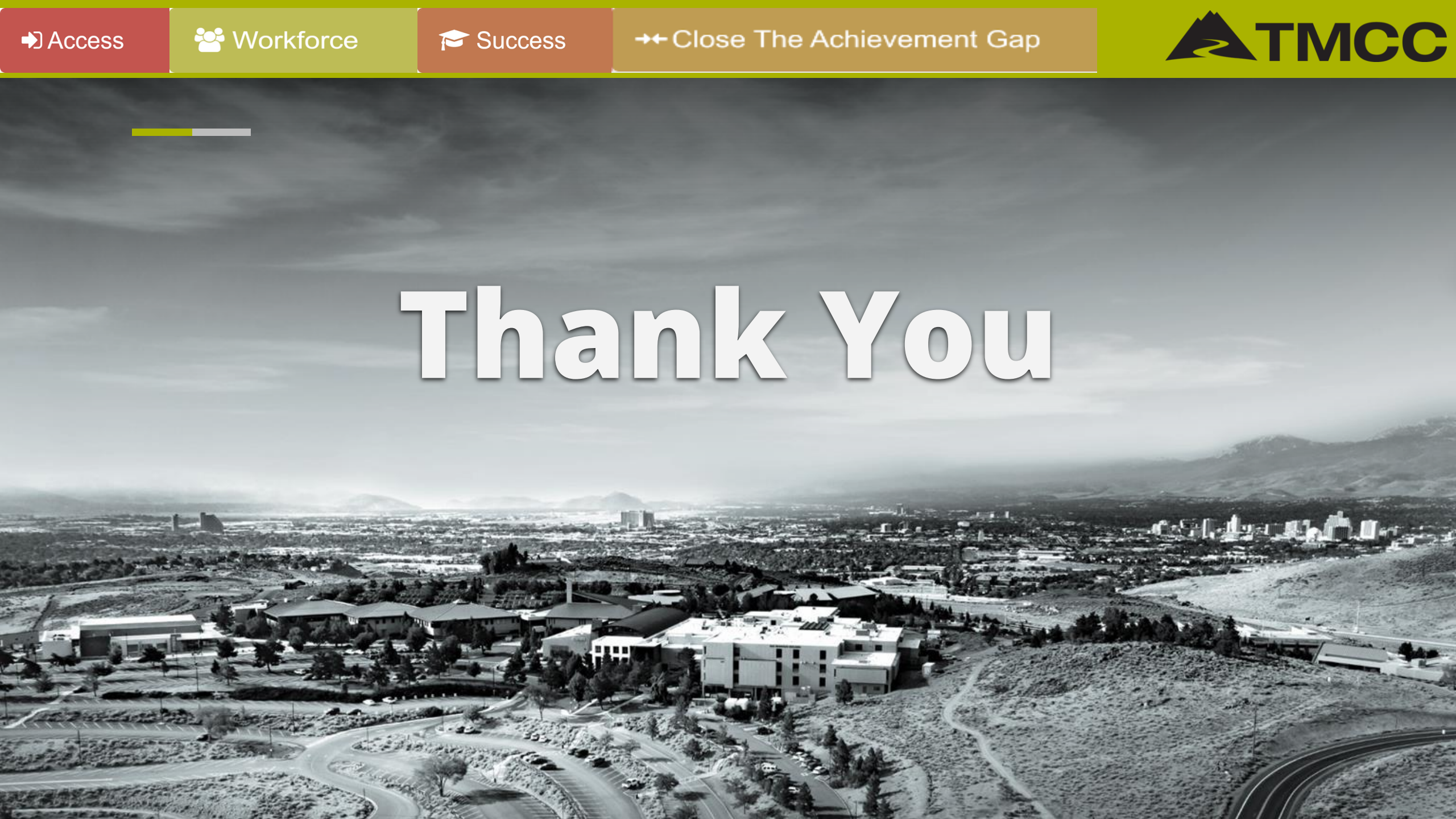
👥 Workforce

🎓 Success

↔ Close The Achievement Gap



Thank You





Peden Young
Senior Manager for Energy,
The Home Depot



Questions for Today's Speakers



Vince Digneo
Head of Sustainability, Climate & Clean Energy
Palo Alto Networks



Amber Sells
Financial Analysis Manager,
Elevance Health




Dr. Ayodele Akinola
Executive Director,
Truckee Meadows Community College



Peden Young
Senior Manager for Energy,
The Home Depot



Reminder: Key GPLA Dates

- **March 11, 2024:** Application period opened
 - **April 19, 2024:** Final application deadline
 - **Summer 2024:** Winner and non-winner notifications
 - **September 16-18, 2024:** REM™ Conference, including the Awards Ceremony
 - **Application:** www.epa.gov/greenpower/green-power-leadership-awards
 - **Still have questions?** Contact gpla@epa.gov
- 
- 