

***Navajo Nation – San Juan River
Watersheds – Preliminary Surface Water
Quality Assessment Report (Integrated
305(b) Report and 303(d) Listing)***



San Juan River at Bluff, Utah on August 8, 2015

Prepared by:

Navajo Nation Environmental Protection Agency
Water Quality Program
Post Office Box 339
Window Rock, Arizona 86515
(928) 871-7690

February 9, 2016

TABLE OF CONTENTS

1.0	Background and Purpose	1
2.0	San Juan River Watersheds	2
3.0	San Juan River Watersheds Surface Water Quality Data Collection Activities.....	7
4.0	San Juan River Watersheds Surface Water Quality Data Assessment	8
5.0	References.....	92

FIGURES

2.0.	Lower San Juan River –Four Corners Watershed.....	3
2.1	Middle San Juan River Watershed.....	3
	Detailed Geographic Locations of Lower San Juan River – Four Corners Watershed Sample Sites.....	4
	Detailed Geographic Locations of Middle San Juan River Watershed Sample Sites.....	5

TABLES

2.0	Atlas of Assessed Surface Water Bodies with Known Lengths/Areas.....	7
	Lower San Juan River – Four Corners Watershed Sample Sites – Water Quality Data Assessment Tables.....	9
	Middle San Juan River Watershed Sample Sites – Water Quality Data Assessment Tables.....	27

PHOTOGRAPHS

Photographs of Sample Sites.....	9 to 89
----------------------------------	---------

1.0 Background and Purpose

The objective of the United States Clean Water Act (USCWA) is to "*restore and maintain* the chemical, physical, and biological integrity of the Nation's Waters" (USGPO, 1988). In order to meet this objective, and exert its sovereign authority to protect its water resources, the Navajo Nation codified the Navajo Nation Clean Water Act (NNCWA 1999) in July 1999. The importance of water to the Navajo Nation is clearly demonstrated by the adoption of the NNCWA, with the Navajo Nation being only one of a few tribes or states to adopt a clean water act. The NNCWA provides the legislative authority to allow the Navajo Nation to fulfill the USCWA requirements.

In order to *restore and maintain* the chemical, physical, and biological integrity of the Nation's Water, states and federally recognized tribes adopt water quality standards which protect the uses of the Nation's water bodies. Water quality standards are narrative and numeric criteria used as benchmarks to determine if a designated use for a water body is being attained. NNCWA Section 103(a)(2)(A) provides for "the establishment of water quality standards to protect fish and wildlife and the domestic, cultural, agricultural and recreational uses of the waters of the Navajo Nation." This is consistent with the "fishable and swimmable goal" set forth in USCWA Sections 101(a)(2) and 303(c)(2). NNCWA Sections 201(b) and (c) requires that designated uses be established for public water supplies, the protection and propagation of fish and wildlife, recreational purposes, agricultural (including livestock watering), industrial, cultural, and other uses, and to establish criteria to protect the designated uses.

The Navajo Nation first codified the 1999 Navajo Nation Water Quality Standards (1999 NNWQS) in July 1999 (NNEPA 1999). On January 20, 2006 the US Environmental Protection Agency (USEPA) approved the Navajo Nation's application to administer the Water Quality Standards and Certification Programs under the federal Clean Water Act's Sections 303 and 401. On March 26, 2009, the USEPA approved the 2007 Navajo Nation Surface Water Quality Standards (2007 NNSWQS) (NNEPA 2008). Revisions to the 2007 NNSWQS have been made and are contained within the draft 2015 NNSWQS (NNEPA 2015). The draft 2015 NNSWQS are awaiting public review and comment.

The Navajo Environmental Protection National Pollutant Discharge Elimination System / Water Quality Program (NNEPA WQP) is responsible for implementing the requirements of the USCWA and the NNCWA within the Navajo Nation.

This report is intended to fulfill USCWA Section 305(b) reporting requirements, USCWA Section 303(d) listing requirements, USEPA's USCWA Section 106 Tribal Guidance, Chapter 8 and Appendix A, assessment reporting requirements, and FY 2015 National Water Program Guidance Measures WQ-SP14b.N11. It also fulfills assessment reporting requirements in the Fiscal Year 2015 Work Plan.

The purpose of this report is to assess Lower San Juan River – Four Corners and Middle San Juan River watersheds surface water quality data obtained by the NNEPA WQP by:

1. Presenting the surface water quality data;
2. Comparing the surface water quality data to the latest version of the NNSWQS to see if standards are being met; and
3. Determine if uses designated for surface waters are being supported using the methods described in the February 20, 2008 NNEPA document entitled: “Guidance for Assessing the Quality of Navajo Nation Surface Waters to Determine Impairment” (Integrated 305(b) Reporting and 303(d) Listing) (NNEPA Impairment Guidance).

The Navajo Nation San Juan River Watersheds Preliminary Surface Water Quality Assessment is intended to be a living document, which can be updated to include the latest surface water quality data. The NNEPA WQP welcomes all comments that will assist in revising this report in the future.

2.0 Middle and Lower San Juan River – Four Corners Watersheds

The Lower San Juan River – Four Corners Watershed (Figure 2.0) is located on approximately 903 square miles within the Navajo Nation. The United States Geological Survey (USGS) 8-digit Hydrologic Unit Code (HUC) for the Lower San Juan River – Four Corners Watershed is 14080201 (USGS 1987). The NNEPA WQP watershed code for the Lower San Juan River – Four Corners Watershed is 02. The Middle San Juan River Watershed (Figure 2.1) is located on approximately 1077 square miles within the Navajo Nation. The United States Geological Survey (USGS) 8-digit Hydrologic Unit Code (HUC) for the Middle San Juan River Watershed is 14080105 (USGS 1987). The NNEPA WQP watershed code for the Middle San Juan River Watershed is 10. Detailed geographic locations of watershed sampling sites are provided in additional maps following Figures 2.0 and 2.1. An atlas of water bodies with known lengths and areas assessed by the NNEPA WQP within this watershed are listed in Table 2.0. Table 2.0 does not represent all sampled surface waters in the watershed. There are a minimum of 295 miles of streams (rivers, washes, arroyos, or creeks) in these watersheds.

Figure 2.0 – Lower San Juan River – Four Corners Watershed (903 square miles)

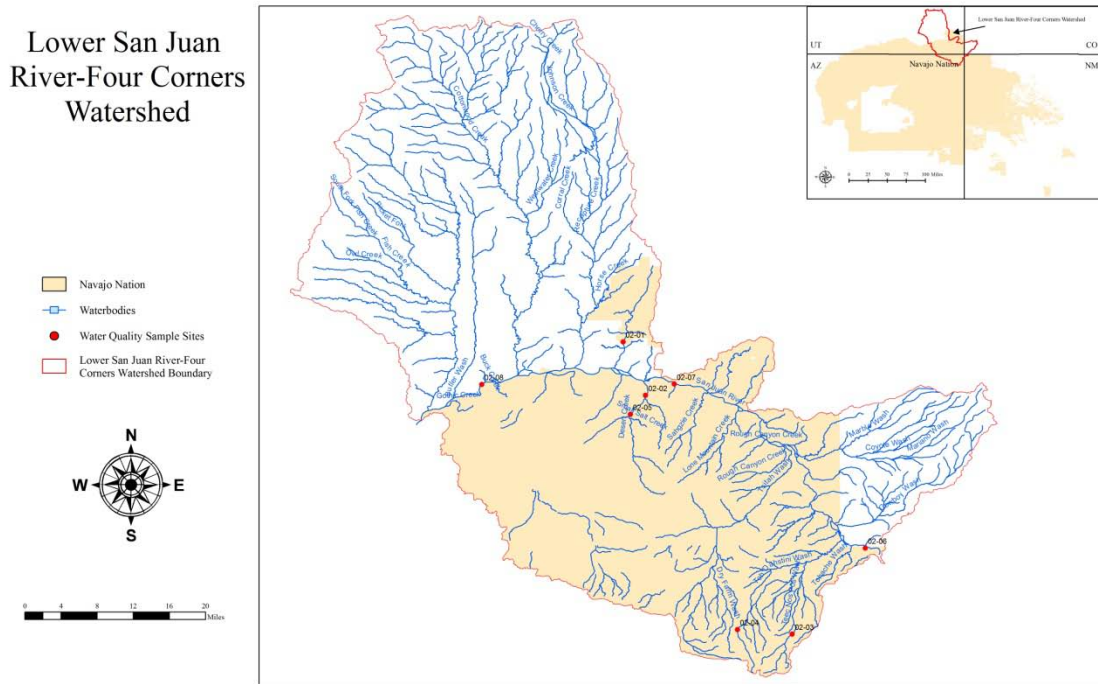
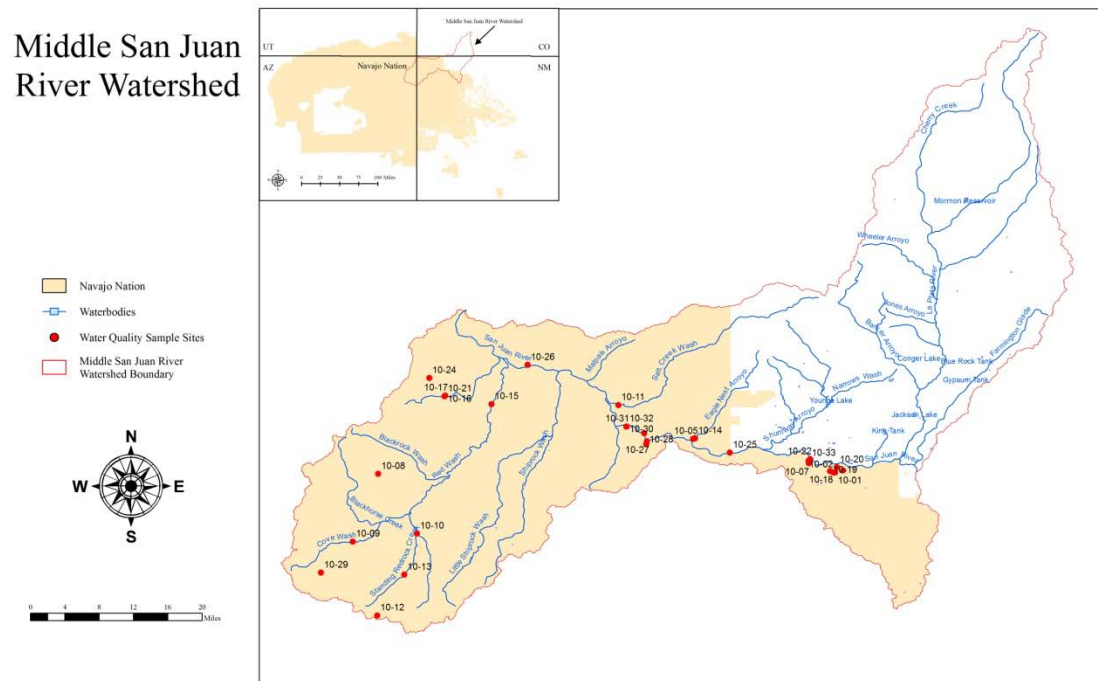






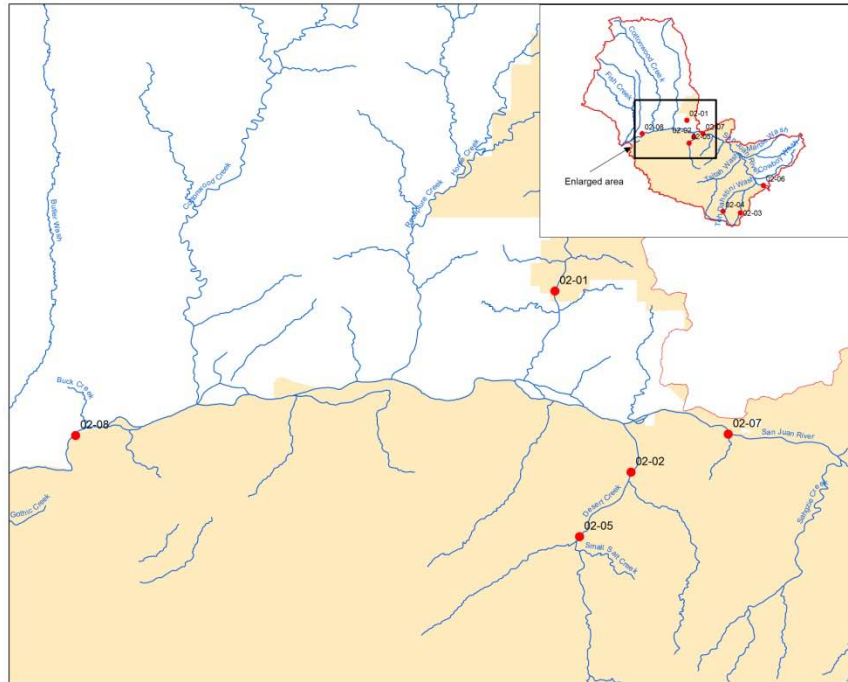
Figure 2.1 – Middle San Juan River Watershed (1077 square miles)






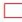
Detailed Geographic Locations of Lower San Juan River – Four Corners Watershed Sample Sites

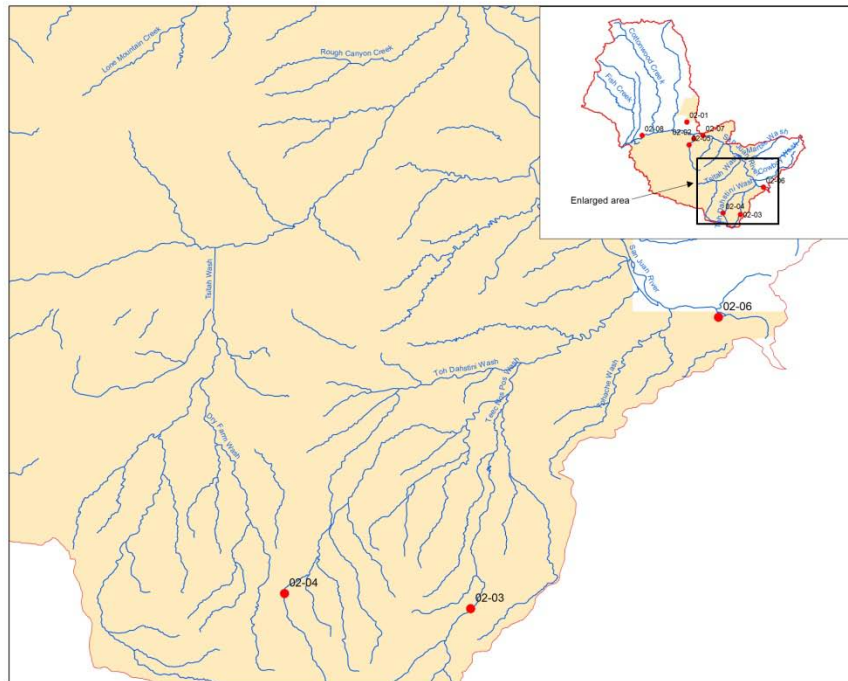
Lower San Juan River-Four Corners Watershed

-  Navajo Nation
-  Waterbodies
-  Water Quality Sample Sites
-  Lower San Juan River-Four Corners Watershed Boundary



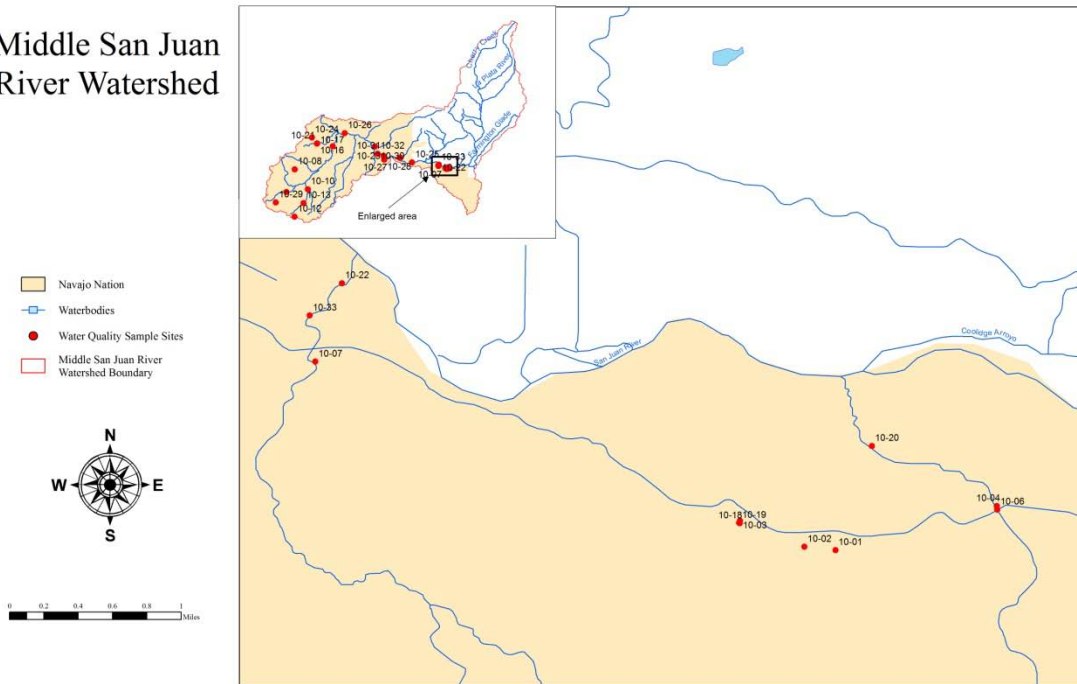
Lower San Juan River-Four Corners Watershed

-  Navajo Nation
-  Waterbodies
-  Water Quality Sample Sites
-  Lower San Juan River-Four Corners Watershed Boundary

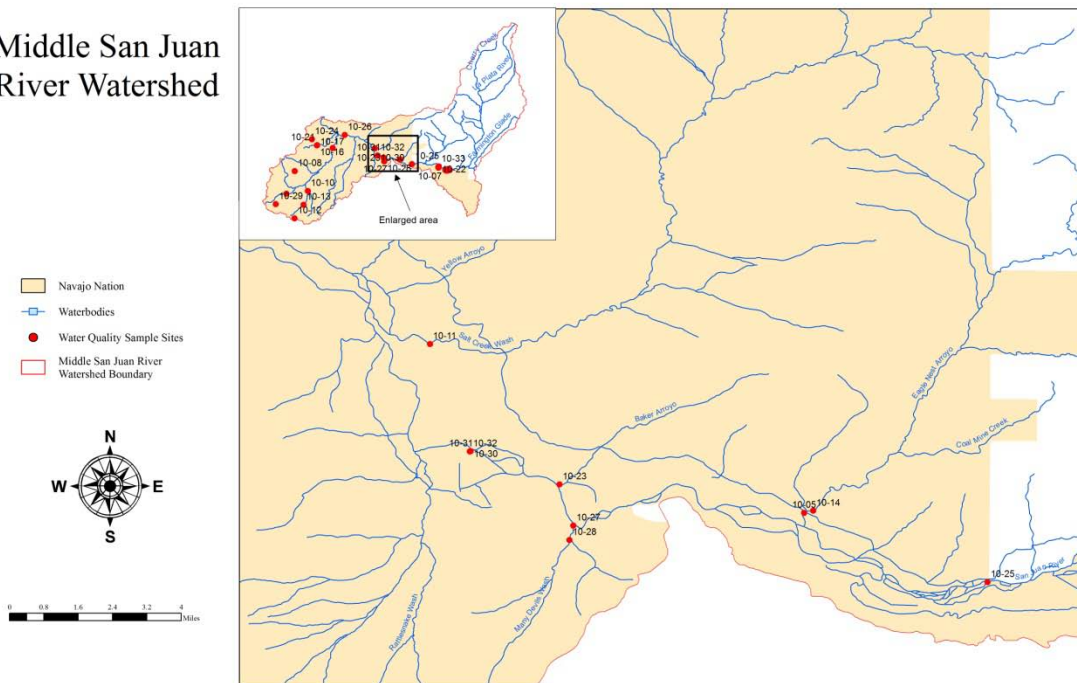


Detailed Geographic Locations of Middle San Juan River Watershed Sample Sites

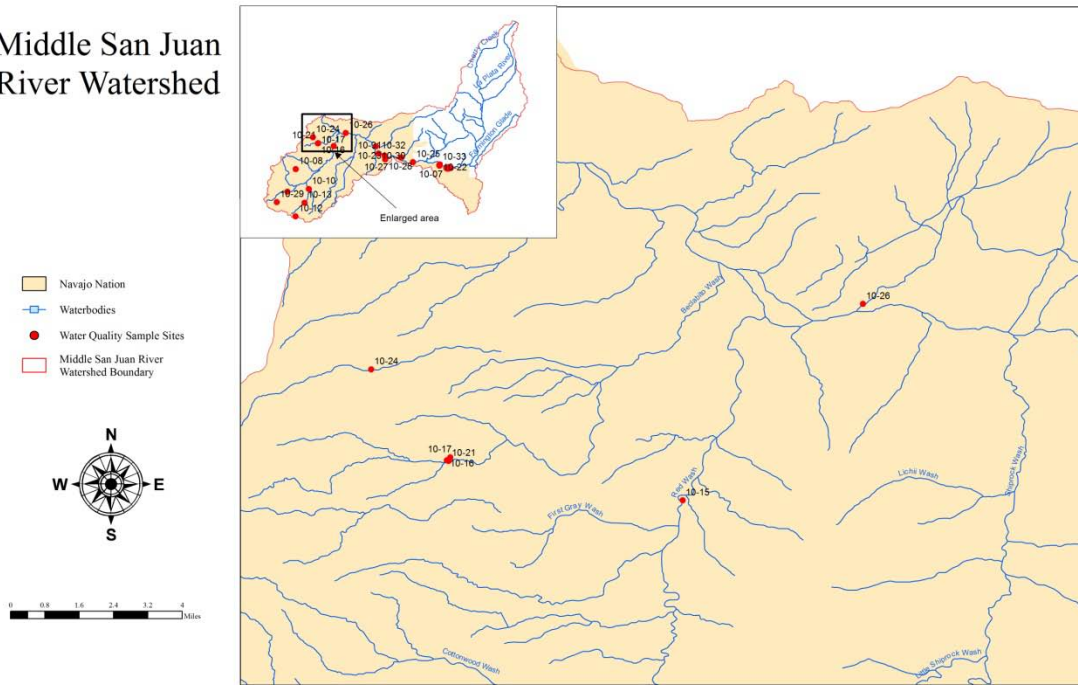
Middle San Juan River Watershed



Middle San Juan River Watershed



Middle San Juan River Watershed



Middle San Juan River Watershed

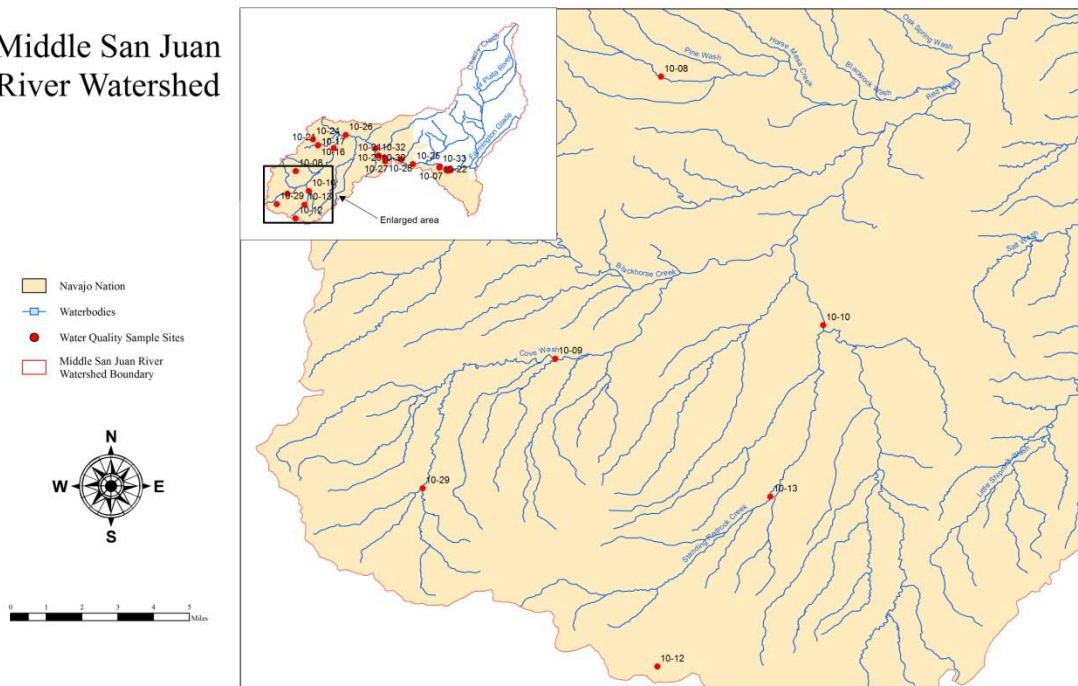


Table 2.0 – Atlas of Assessed Surface Water Bodies with Known Lengths/Areas

(from Navajo Nation Department of Water Resources - March 31, 2009)

Surface Water Body Name Within The Navajo Nation	
Streams (Rivers, Washes, Arroyos, Creeks)	Length (miles)
McCraken Canyon	10.71 miles
Desert Creek	16.07 miles
Tec Nos Pos Wash	8.16 miles
Toh Dahstini Wash	15.47 miles
San Juan River	120.16 miles
Ojo Amarillo	12.7 miles
Eagle Nest Arroyo	8.25 miles
Pine Wash	7.81 miles
Cove Wash	17.99 miles
Red Wash	40.22 miles
Salt Creek Wash	20.71 miles
Standing Redrock Creek	12.25 miles
Baker Arroyo	5.07 miles
Bitsui Wash	Not Available
Many Devils Wash	Not Available
Beclabito Wash	Not Available
Shoe Game Wash	Not Available
Total Stream Miles Assessed (minimum)	295.57 miles
Lakes (Lake or Reservoir)	Area (acres)
None	0
Total Lake Acres Assessed	0

3.0 San Juan River Watersheds Surface Water Quality Data Collection Activities

Monitoring and water quality sampling of the San Juan River Watersheds was conducted using professional experience and in accordance with the NNEPA WQP June 1, 2012 “Quality Assurance Plan for Surface Water Data Collection” or previous quality assurance plans. Measurements of physical/chemical characteristics and stream discharge were made. Samples were obtained and submitted to an analytical laboratory for analyses. Quality Assurance and Quality Control samples were also obtained.

4.0 San Juan River Watersheds Surface Water Quality Data Assessment

The following tables provide detailed information on each sample site. When available a site photograph is provided. The sample site name used for sampling is provided along with the alias used to locate the sample site on the watershed maps in Section 2.0 and a location description. The total number of years sampled is provided along with years sampled during the assessment period. The assessment period is the consecutive time period where a minimum number of samples must be obtained in order to determine designated use support. In most instances it is a three year consecutive period where a minimum of five samples must be obtained. (Please refer to the NNEPA Impairment Guidance). Water quality data at each site was compared to the numeric standards in the 2007 NNSWQS. Uses designated for each water body in the 2007 NNSWQS are listed in each table. These uses are Domestic Water Supply (Dom), Primary Human Contact (PrHC), Secondary Human Contact (ScHC), Fish Consumption (FC), Aquatic & Wildlife Habitat (Acute and Chronic) (A&WHbt (A) and A&WHbt (C)), Agricultural Water Supply (AgWS), and Livestock Watering (LW). Exceedances of the numeric standard are provided for any analyte for both the individual analyte and for the analytes corresponding to each designated use. Also provided are the percentages of exceedances from the number of samples obtained. The letter “n” refers to the number of samples obtained.

In some instances sample site locations may not be located at a Water of the Navajo Nation such as a canal but has been given the designated uses associated with the nearest known surface water listed in the 2007 NNSWQS. In those instances the water quality data obtained is used to determine the geographic distribution within the watershed of the analytes sampled.

Analytes are listed in each table only if they have been found to have exceeded the numeric standard at any surface water sample site within the watershed. If, for example, aluminum is listed as an analyte at “Site X” but did not exceed the numeric standard at “Site X”, it is listed because it did exceed the numeric standard at another location within the watershed, “Site A”. The purpose of this is to try to understand the distribution of the analyte within the watershed.

The category of designated use support from the NNEPA Impairment Guidance may be found at the end of each table. Designated use support categories are determined, in part, by comparing the analytical result at each sample site to the 2007 NNSWQS. As mentioned in Section 1.0 revisions to the 2007 NNSWQS have been made and are contained within the draft 2015 NNSWQS. The draft 2015 NNSWQS contain new numeric standards and also new interpretations of how numeric standards support designated

uses. Additionally the NNEPA Impairment Guidance is scheduled for revision as well to reflect the changes in the 2015 NNSWQS. Once the 2015 NNSWQS are approved and the NNEPA Impairment Guidance is updated, the designated use support category assigned to the water bodies in this section may change. The NNEPA WQP also anticipates being able to list surface waters as impaired once primacy is granted by USEPA for federal Clean Water Act Section 303(d).

To obtain the complete set of surface water quality analytical data from this watershed used in these tables please call 505-368-1037.

Lower San Juan River – Four Corners Watershed Sample Sites

Site 02MCCRAKEN01



Site	Alias	Location
02MCCRAKEN01	02-01	McCraken Canyon

Total		Assessment period	
Year(s) sampled	# of Sample Events	Year(s) sampled*	# of Sample Events*
2001	2	2001	2

***Note that not all analytes were necessarily sampled each sample event.**

Designated Use	All samples		Assessment period	
	Total number of exceedances	Total analytes exceeded	Total number of exceedances	Total analytes exceeded
FC	0	0	0	0
ScHC	0	0	0	0
A&WHbt (A)	0	0	0	0
A&WHbt (C)	1	1	1	1
LW	0	0	0	0

Analyte	Fish Consumption					
	All samples			Assessment period		
	Exceedances	n	Percent	Exceedances	n	Percent
Mercury (T)	0	2	0.0%	0	2	0.0%
Thallium (T)	--	0	--	--	0	--

Analyte	Secondary Human Contact					
	All samples			Assessment period		
	Exceedances	n	Percent	Exceedances	n	Percent
Lead (T)	--	0	--	--	0	--

Analyte	Aquatic and Wildlife Habitat (Acute)					
	All samples			Assessment period		
	Exceedances	n	Percent	Exceedances	n	Percent
Aluminum (T)	--	0	--	--	0	--

Analyte	Aquatic and Wildlife Habitat (Chronic)					
	All samples			Assessment period		
	Exceedances	n	Percent	Exceedances	n	Percent
Aluminum (T)	--	0	--	--	0	--
Cyanide (T)	0	2	0.0%	0	2	0.0%
Mercury (T)	0	2	0.0%	0	2	0.0%
Selenium (T)	1	2	50.0%	1	2	50.0%

Analyte	Livestock Watering					
	All samples			Assessment period		
	Exceedances	n	Percent	Exceedances	n	Percent
Cyanide (T)	0	2	0.0%	0	2	0.0%
Gross alpha (Adj)	--	0	--	--	0	--
Lead (T)	--	0	--	--	0	--

- Was the minimum number of samples to determine designated use support obtained during the assessment period? **No.**
- **Category of Designated Use Support: Category 3 – There is insufficient data to determine if any designated use is supported.**
- **Recommendation is to use data obtained at this site to understand geographic distribution of listed analytes in the watershed.**

Site 02DESERTCR02

Site	Alias	Location
02DESERTCR02	02-02	Desert Creek near mouth

Total		Assessment period	
Year(s) sampled	# of Sample Events	Year(s) sampled*	# of Sample Events*
2001	1	2001	1

*Note that not all analytes were necessarily sampled each sample event.

Designated Use	All samples		Assessment period	
	Total number of exceedances	Total analytes exceeded	Total number of exceedances	Total analytes exceeded
FC	0	0	0	0
ScHC	0	0	0	0
A&WHbt (A)	0	0	0	0
A&WHbt (C)	1	1	1	1
LW	0	0	0	0

Analyte	Fish Consumption					
	All samples			Assessment period		
	Exceedances	n	Percent	Exceedances	n	Percent
Mercury (T)	0	1	0.0%	0	1	0.0%
Thallium (T)	--	0	--	--	0	--

Analyte	Secondary Human Contact					
	All samples			Assessment period		
	Exceedances	n	Percent	Exceedances	n	Percent
Lead (T)	--	0	--	--	0	--

Analyte	Aquatic and Wildlife Habitat (Acute)					
	All samples			Assessment period		
	Exceedances	n	Percent	Exceedances	n	Percent
Aluminum (T)	--	0	--	--	0	--

Analyte	Aquatic and Wildlife Habitat (Chronic)					
	All samples			Assessment period		
	Exceedances	n	Percent	Exceedances	n	Percent
Aluminum (T)	--	0	--	--	0	--
Cyanide (T)	0	1	0.0%	0	1	0.0%
Mercury (T)	0	1	0.0%	0	1	0.0%
Selenium (T)	1	1	100.0%	1	1	100.0%

Analyte	Livestock Watering					
	All samples			Assessment period		
	Exceedances	n	Percent	Exceedances	n	Percent
Cyanide (T)	0	1	0.0%	0	1	0.0%
Gross alpha (Adj)	--	0	--	--	0	--
Lead (T)	--	0	--	--	0	--

- **Was the minimum number of samples to determine designated use support obtained during the assessment period? No.**
- **Category of Designated Use Support: Category 3 – There is insufficient data to determine if any designated use is supported.**
- **Recommendation is to use data obtained at this site to understand geographic distribution of listed analytes in the watershed.**

Site 02TEECNOSP03

Site	Alias	Location
02TEECNOSP03	02-03	Teec Nos Pos Wash

Total		Assessment period	
Year(s) sampled	# of Sample Events	Year(s) sampled*	# of Sample Events*
2001-2013	15	2011-2013	5

*Note that not all analytes were necessarily sampled each sample event.

Designated Use	All samples		Assessment period	
	Total number of exceedances	Total analytes exceeded	Total number of exceedances	Total analytes exceeded
FC	0	0	0	0
PrHC	0	0	0	0
ScHC	0	0	0	0
A&WHbt (A)	0	0	0	0
A&WHbt (C)	1	1	1	1
AgWS	0	0	0	0
LW	1	1	1	1

Analyte	Fish Consumption					
	All samples			Assessment period		
	Exceedances	n	Percent	Exceedances	n	Percent
Mercury (T)	0	14	0.0%	0	5	0.0%
Thallium (T)	0	10	0.0%	0	5	0.0%

Analyte	Primary Human Contact					
	All samples			Assessment period		
	Exceedances	n	Percent	Exceedances	n	Percent
Arsenic (T)	0	10	0.0%	0	5	0.0%
Lead (T)	0	10	0.0%	0	5	0.0%

Analyte	Secondary Human Contact					
	All samples			Assessment period		
	Exceedances	n	Percent	Exceedances	n	Percent
Lead (T)	0	10	0.0%	0	5	0.0%

Analyte	Aquatic and Wildlife Habitat (Acute)					
	All samples			Assessment period		
	Exceedances	n	Percent	Exceedances	n	Percent
Aluminum (T)	0	9	0.0%	0	5	0.0%

Analyte	Aquatic and Wildlife Habitat (Chronic)					
	All samples			Assessment period		
	Exceedances	n	Percent	Exceedances	n	Percent
Aluminum (T)	0	9	0.0%	0	5	0.0%
Cyanide (T)	1	14	7.1%	1	5	20.0%
Mercury (T)	0	14	0.0%	0	5	0.0%
Selenium (T)	0	14	0.0%	0	5	0.0%

Analyte	Agricultural Water Supply					
	All samples			Assessment period		
	Exceedances	n	Percent	Exceedances	n	Percent
Aluminum (D)	0	12	0.0%	0	5	0.0%

Analyte	Livestock Watering					
	All samples			Assessment period		
	Exceedances	n	Percent	Exceedances	n	Percent
Cyanide (T)	1	14	7.1%	1	5	20.0%
Gross alpha (Adj)	0	11	0.0%	0	5	0.0%
Lead (T)	0	10	0.0%	0	5	0.0%

- **Was the minimum number of samples to determine designated use support obtained during the assessment period? Yes.**
- **Category of Designated Use Support: Category 1 – All designated uses are supported.**

Site 02TOHDAHST04

Site	Alias	Location
02TOHDAHST04	02-04	Toh Dahstini Wash

Total		Assessment period	
Year(s) sampled	# of Sample Events	Year(s) sampled*	# of Sample Events*
2001-2013	6	2012-2013	5

*Note that not all analytes were necessarily sampled each sample event.

Designated Use	All samples		Assessment period	
	Total number of exceedances	Total analytes exceeded	Total number of exceedances	Total analytes exceeded
FC	0	0	0	0
ScHC	0	0	0	0
A&WHbt (A)	0	0	0	0
A&WHbt (C)	5	3	5	3
AgWS	0	0	0	0
LW	1	1	1	1

Analyte	Fish Consumption					
	All samples			Assessment period		
	Exceedances	n	Percent	Exceedances	n	Percent
Mercury (T)	0	6	0.0%	0	5	0.0%
Thallium (T)	0	5	0.0%	0	5	0.0%

Analyte	Secondary Human Contact					
	All samples			Assessment period		
	Exceedances	n	Percent	Exceedances	n	Percent
Lead (T)	0	5	0.0%	0	5	0.0%

Analyte	Aquatic and Wildlife Habitat (Acute)					
	All samples			Assessment period		
	Exceedances	n	Percent	Exceedances	n	Percent
Aluminum (T)	0	5	0.0%	0	5	0.0%

Analyte	Aquatic and Wildlife Habitat (Chronic)					
	All samples			Assessment period		
	Exceedances	n	Percent	Exceedances	n	Percent
Aluminum (T)	2	5	40.0%	2	5	40.0%
Cyanide (T)	1	6	16.7%	1	5	20.0%
Mercury (T)	2	6	33.3%	2	5	40.0%
Selenium (T)	0	6	0.0%	0	5	0.0%

Analyte	Agricultural Water Supply					
	All samples			Assessment period		
	Exceedances	n	Percent	Exceedances	n	Percent
Aluminum (D)	0	6	0.0%	0	5	0.0%

Analyte	Livestock Watering					
	All samples			Assessment period		
	Exceedances	n	Percent	Exceedances	n	Percent
Cyanide (T)	1	6	16.7%	1	5	20.0%
Gross alpha (Adj)	0	6	0.0%	0	5	0.0%
Lead (T)	0	5	0.0%	0	5	0.0%

- **Was the minimum number of samples to determine designated use support obtained during the assessment period? Yes.**
- **Category of Designated Use Support: Category 5b – At least one designated use is not supported and a review of the designated use and/or water quality standards will be conducted to determine if appropriate for the surface water body.**
- **Category 5b is specific to only the analytes listed above with 2 or more exceedances during the assessment period for the individual designated use. For analytes with 1 or less exceedances during the assessment period the designated use is supported for those analytes. (Note that not all analytes with 0 exceedances are listed in these tables but are contained in the complete analytical data set.)**

Site 02DESERTCR05

Site	Alias	Location
02DESERTCR05	02-05	Desert Creek near headwaters

Total		Assessment period	
Year(s) sampled	# of Sample Events	Year(s) sampled*	# of Sample Events*
2012-2013	5	2012-2013	5

*Note that not all analytes were necessarily sampled each sample event.

Designated Use	All samples		Assessment period	
	Total number of exceedances	Total analytes exceeded	Total number of exceedances	Total analytes exceeded
FC	0	0	0	0
SchC	0	0	0	0
A&WHbt (A)	3	1	3	1
A&WHbt (C)	10	3	10	3
LW	0	0	0	0

Analyte	Fish Consumption					
	All samples			Assessment period		
	Exceedances	n	Percent	Exceedances	n	Percent
Mercury (T)	0	5	0.0%	0	5	0.0%
Thallium (T)	0	5	0.0%	0	5	0.0%

Analyte	Secondary Human Contact					
	All samples			Assessment period		
	Exceedances	n	Percent	Exceedances	n	Percent
Lead (T)	0	5	0.0%	0	5	0.0%

Analyte	Aquatic and Wildlife Habitat (Acute)					
	All samples			Assessment period		
	Exceedances	n	Percent	Exceedances	n	Percent
Aluminum (T)	3	5	60.0%	3	5	60.0%

Analyte	Aquatic and Wildlife Habitat (Chronic)					
	All samples			Assessment period		
	Exceedances	n	Percent	Exceedances	n	Percent
Aluminum (T)	5	5	100.0%	5	5	100.0%
Cyanide (T)	0	5	0.0%	0	5	0.0%
Mercury (T)	4	5	80.0%	4	5	80.0%
Selenium (T)	1	5	20.0%	1	5	20.0%

Analyte	Livestock Watering					
	All samples			Assessment period		
	Exceedances	n	Percent	Exceedances	n	Percent
Cyanide (T)	0	5	0.0%	0	5	0.0%
Gross alpha (Adj)	0	5	0.0%	0	5	0.0%
Lead (T)	0	5	0.0%	0	5	0.0%

- **Was the minimum number of samples to determine designated use support obtained during the assessment period? Yes.**
- **Category of Designated Use Support: Category 5b – At least one designated use is not supported and a review of the designated use and/or water quality standards will be conducted to determine if appropriate for the surface water body.**
- **Category 5b is specific to only the analytes listed above with 2 or more exceedances during the assessment period for the individual designated use. For analytes with 1 or less exceedances during the assessment period the designated use is supported for those analytes. (Note that not all analytes with 0 exceedances are listed in these tables but are contained in the complete analytical data set.)**

Site 02SANJUANR06

Site	Alias	Location
02SANJUANR06	02-06	San Juan River near Four Corners

Total		Assessment period	
Year(s) sampled	# of Sample Events	Year(s) sampled*	# of Sample Events*
2012-2015	9	2012-2013	5

*Note that not all analytes were necessarily sampled each sample event.

Designated Use	All samples		Assessment period	
	Total number of exceedances	Total analytes exceeded	Total number of exceedances	Total analytes exceeded
Dom	20	6	16	5
FC	1	1	1	1
PrHC	8	2	6	2
ScHC	7	1	5	1
A&WHbt (A)	5	1	4	1
A&WHbt (C)	17	3	11	3
AgWS	1	1	0	0
LW	5	2	3	1

Analyte	Domestic Water Supply					
	All samples			Assessment period		
	Exceedances	n	Percent	Exceedances	n	Percent
Arsenic (T)	3	9	33.3%	3	5	60.0%
Barium (T)	3	9	33.3%	3	5	60.0%
Beryllium (T)	3	9	33.3%	3	5	60.0%
Chromium (T)	2	9	22.2%	2	5	40.0%
Gross alpha (Adj)	2	9	22.2%	0	5	0.0%
Lead (T)	7	9	77.8%	5	5	100.0%
Thallium (T)	1	9	11.1%	1	5	20.0%
Uranium (T)	1	9	11.1%	1	5	20.0%
Zinc (T)	1	9	11.1%	1	5	20.0%

Analyte	Fish Consumption					
	All samples			Assessment period		
	Exceedances	n	Percent	Exceedances	n	Percent
Mercury (T)	0	9	0.0%	0	5	0.0%
Thallium (T)	1	9	11.1%	1	5	20.0%

Analyte	Primary Human Contact					
	All samples			Assessment period		
	Exceedances	n	Percent	Exceedances	n	Percent
Arsenic (T)	1	9	11.1%	1	5	20.0%
Lead (T)	7	9	77.8%	5	5	100.0%

Analyte	Secondary Human Contact					
	All samples			Assessment period		
	Exceedances	n	Percent	Exceedances	n	Percent
Lead (T)	7	9	77.8%	5	5	100.0%

Analyte	Aquatic and Wildlife Habitat (Acute)					
	All samples			Assessment period		
	Exceedances	n	Percent	Exceedances	n	Percent
Aluminum (T)	5	6	83.3%	4	5	80.0%

Analyte	Aquatic and Wildlife Habitat (Chronic)					
	All samples			Assessment period		
	Exceedances	n	Percent	Exceedances	n	Percent
Aluminum (T)	5	6	83.3%	4	5	80.0%
Cyanide (T)	0	9	0.0%	0	5	0.0%
Mercury (T)	9	9	100.0%	5	5	100.0%
Selenium (T)	3	9	33.3%	2	5	40.0%

Analyte	Agricultural Water Supply					
	All samples			Assessment period		
	Exceedances	n	Percent	Exceedances	n	Percent
Aluminum (D)	1	9	11.1%	0	5	0.0%

Analyte	Livestock Watering					
	All samples			Assessment period		
	Exceedances	n	Percent	Exceedances	n	Percent
Cyanide (T)	0	9	0.0%	0	5	0.0%
Gross alpha (Adj)	2	9	22.2%	0	5	0.0%
Lead (T)	3	9	33.3%	3	5	60.0%

- **Was the minimum number of samples to determine designated use support obtained during the assessment period? Yes.**
- **Category of Designated Use Support: Category 5b – At least one designated use is not supported and a review of the designated use and/or water quality standards will be conducted to determine if appropriate for the surface water body.**
- **Category 5b is specific to only the analytes listed above with 2 or more exceedances during the assessment period for the individual designated use. For analytes with 1 or less exceedances during the assessment period the designated use is supported for those analytes. (Note that not all analytes with 0 exceedances are listed in these tables but are contained in the complete analytical data set.)**

Site 02SANJUANR07

Site	Alias	Location
02SANJUANR07	02-07	San Juan River near Montezuma Cr

Total		Assessment period	
Year(s) sampled	# of Sample Events	Year(s) sampled*	# of Sample Events*
2012-2015	8	2012-2013	5

*Note that not all analytes were necessarily sampled each sample event.

Designated Use	All samples		Assessment period	
	Total number of exceedances	Total analytes exceeded	Total number of exceedances	Total analytes exceeded
Dom	24	6	19	5
FC	2	2	2	2
PrHC	8	2	6	2
ScHC	7	1	5	1
A&WHbt (A)	5	1	5	1
A&WHbt (C)	17	3	13	3
AgWS	0	0	0	0
LW	4	2	2	1

Analyte	Domestic Water Supply					
	All samples			Assessment period		
	Exceedances	n	Percent	Exceedances	n	Percent
Arsenic (T)	5	8	62.5%	4	5	80.0%
Barium (T)	3	8	37.5%	3	5	60.0%
Beryllium (T)	4	8	50.0%	4	5	80.0%
Chromium (T)	3	8	37.5%	3	5	60.0%
Gross alpha (Adj)	2	8	25.0%	0	5	0.0%
Lead (T)	7	8	87.5%	5	5	100.0%
Thallium (T)	1	8	12.5%	1	5	20.0%
Uranium (T)	0	8	0.0%	0	5	0.0%
Zinc (T)	1	8	12.5%	1	5	20.0%

Analyte	Fish Consumption					
	All samples			Assessment period		
	Exceedances	n	Percent	Exceedances	n	Percent
Mercury (T)	1	8	12.5%	1	5	20.0%
Thallium (T)	1	8	12.5%	1	5	20.0%

Analyte	Primary Human Contact					
	All samples			Assessment period		
	Exceedances	n	Percent	Exceedances	n	Percent
Arsenic (T)	1	8	12.5%	1	5	20.0%
Lead (T)	7	8	87.5%	5	5	100.0%

Analyte	Secondary Human Contact					
	All samples			Assessment period		
	Exceedances	n	Percent	Exceedances	n	Percent
Lead (T)	7	8	87.5%	5	5	100.0%

Analyte	Aquatic and Wildlife Habitat (Acute)					
	All samples			Assessment period		
	Exceedances	n	Percent	Exceedances	n	Percent
Aluminum (T)	5	5	100.0%	5	5	100.0%

Analyte	Aquatic and Wildlife Habitat (Chronic)					
	All samples			Assessment period		
	Exceedances	n	Percent	Exceedances	n	Percent
Aluminum (T)	5	5	100.0%	5	5	100.0%
Cyanide (T)	0	8	0.0%	0	5	0.0%
Mercury (T)	8	8	100.0%	5	5	100.0%
Selenium (T)	4	8	50.0%	3	5	60.0%

Analyte	Agricultural Water Supply					
	All samples			Assessment period		
	Exceedances	n	Percent	Exceedances	n	Percent
Aluminum (D)	0	7	0.0%	0	4	0.0%

Analyte	Livestock Watering					
	All samples			Assessment period		
	Exceedances	n	Percent	Exceedances	n	Percent
Cyanide (T)	0	8	0.0%	0	5	0.0%
Gross alpha (Adj)	2	8	25.0%	0	5	0.0%
Lead (T)	2	8	25.0%	2	5	40.0%

- **Was the minimum number of samples to determine designated use support obtained during the assessment period? Yes.**
- **Category of Designated Use Support: Category 5b – At least one designated use is not supported and a review of the designated use and/or water quality standards will be conducted to determine if appropriate for the surface water body.**
- **Category 5b is specific to only the analytes listed above with 2 or more exceedances during the assessment period for the individual designated use. For analytes with 1 or less exceedances during the assessment period the designated use is supported for those analytes. (Note that not all analytes with 0 exceedances are listed in these tables but are contained in the complete analytical data set.)**

Site 02SANJUANR08

Site	Alias	Location
02SANJUANR08	02-08	San Juan River near Bluff

Total		Assessment period	
Year(s) sampled	# of Sample Events	Year(s) sampled*	# of Sample Events*
2012-2015	8	2012-2013	5

*Note that not all analytes were necessarily sampled each sample event.

Designated Use	All samples		Assessment period	
	Total number of exceedances	Total analytes exceeded	Total number of exceedances	Total analytes exceeded
Dom	28	6	21	5
FC	2	1	1	1
PrHC	9	2	7	2
ScHC	7	1	5	1
A&WHbt (A)	5	1	5	1
A&WHbt (C)	17	3	13	3
AgWS	0	0	0	0
LW	5	2	3	1

Analyte	Domestic Water Supply					
	All samples			Assessment period		
	Exceedances	n	Percent	Exceedances	n	Percent
Arsenic (T)	6	8	75.0%	4	5	80.0%
Barium (T)	4	8	50.0%	4	5	80.0%
Beryllium (T)	6	8	75.0%	5	5	100.0%
Chromium (T)	3	8	37.5%	3	5	60.0%
Gross alpha (Adj)	2	8	25.0%	0	5	0.0%
Lead (T)	7	8	87.5%	5	5	100.0%
Thallium (T)	1	8	12.5%	1	5	20.0%
Uranium (T)	0	8	0.0%	0	5	0.0%
Zinc (T)	0	8	0.0%	0	5	0.0%

Analyte	Fish Consumption					
	All samples			Assessment period		
	Exceedances	n	Percent	Exceedances	n	Percent
Mercury (T)	0	8	0.0%	0	5	0.0%
Thallium (T)	2	8	25.0%	1	5	20.0%

Analyte	Primary Human Contact					
	All samples			Assessment period		
	Exceedances	n	Percent	Exceedances	n	Percent
Arsenic (T)	2	8	25.0%	2	5	40.0%
Lead (T)	7	8	87.5%	5	5	100.0%

Analyte	Secondary Human Contact					
	All samples			Assessment period		
	Exceedances	n	Percent	Exceedances	n	Percent
Lead (T)	7	8	87.5%	5	5	100.0%

Analyte	Aquatic and Wildlife Habitat (Acute)					
	All samples			Assessment period		
	Exceedances	n	Percent	Exceedances	n	Percent
Aluminum (T)	5	5	100.0%	5	5	100.0%

Analyte	Aquatic and Wildlife Habitat (Chronic)					
	All samples			Assessment period		
	Exceedances	n	Percent	Exceedances	n	Percent
Aluminum (T)	5	5	100.0%	5	5	100.0%
Cyanide (T)	0	8	0.0%	0	5	0.0%
Mercury (T)	8	8	100.0%	5	5	100.0%
Selenium (T)	4	8	50.0%	3	5	60.0%

Analyte	Agricultural Water Supply					
	All samples			Assessment period		
	Exceedances	n	Percent	Exceedances	n	Percent
Aluminum (D)	0	8	0.0%	0	5	0.0%

Analyte	Livestock Watering					
	All samples			Assessment period		
	Exceedances	n	Percent	Exceedances	n	Percent
Cyanide (T)	0	8	0.0%	0	5	0.0%
Gross alpha (Adj)	2	8	25.0%	0	5	0.0%
Lead (T)	3	8	37.5%	3	5	60.0%

- **Was the minimum number of samples to determine designated use support obtained during the assessment period? Yes.**
- **Category of Designated Use Support: Category 5b – At least one designated use is not supported and a review of the designated use and/or water quality standards will be conducted to determine if appropriate for the surface water body.**
- **Category 5b is specific to only the analytes listed above with 2 or more exceedances during the assessment period for the individual designated use. For analytes with 1 or less exceedances during the assessment period the designated use is supported for those analytes. (Note that not all analytes with 0 exceedances are listed in these tables but are contained in the complete analytical data set.)**

Middle San Juan River Watershed Sample Sites

Site 10UFRUSEEP01

Site	Alias	Location
10UFRUSEEP01	10-01	Upper Fruitland Seep #1

Total		Assessment period	
Year(s) sampled	# of Sample Events	Year(s) sampled*	# of Sample Events*
1999	1	1999	1

*Note that not all analytes were necessarily sampled each sample event.

Designated Use	All samples		Assessment period	
	Total number of exceedances	Total analytes exceeded	Total number of exceedances	Total analytes exceeded
FC	0	0	0	0
ScHC	0	0	0	0
A&WHbt (A)	0	0	0	0
A&WHbt (C)	1	1	1	1
LW	0	0	0	0

Analyte	Fish Consumption					
	All samples			Assessment period		
	Exceedances	n	Percent	Exceedances	n	Percent
Arsenic (T)	--	0	--	--	0	--
Mercury (T)	--	0	--	--	0	--
Selenium (T)	0	1	0.0%	0	1	0.0%
Thallium (T)	--	0	--	--	0	--

Analyte	Secondary Human Contact					
	All samples			Assessment period		
	Exceedances	n	Percent	Exceedances	n	Percent
Lead (T)	--	0	--	--	0	--

Analyte	Aquatic and Wildlife Habitat (Acute)					
	All samples			Assessment period		
	Exceedances	n	Percent	Exceedances	n	Percent
Aluminum (T)	--	0	--	--	0	--
Copper (D)	0	1	0.0%	0	1	0.0%
Mercury (T)	--	0	--	--	0	--
Selenium (T)	0	1	0.0%	0	1	0.0%

Analyte	Aquatic and Wildlife Habitat (Chronic)					
	All samples			Assessment period		
	Exceedances	n	Percent	Exceedances	n	Percent
Aluminum (T)	--	0	--	--	0	--
Copper (D)	0	1	0.0%	0	1	0.0%
Cyanide (T)	0	1	0.0%	0	1	0.0%
Lead (D)	0	1	0.0%	0	1	0.0%
Mercury (T)	--	0	--	--	0	--
Selenium (T)	1	1	100.0%	1	1	100.0%

Analyte	Livestock Watering					
	All samples			Assessment period		
	Exceedances	n	Percent	Exceedances	n	Percent
Cyanide (T)	0	1	0.0%	0	1	0.0%
Gross alpha (Adj)	--	0	--	--	0	--
Lead (T)	--	0	--	--	0	--
Selenium (T)	0	1	0.0%	0	1	0.0%

- **Was the minimum number of samples to determine designated use support obtained during the assessment period? No.**
- **Category of Designated Use Support: Category 3 – There is insufficient data to determine if any designated use is supported.**
- **Recommendation is to use data obtained at this site to understand geographic distribution of listed analytes in the watershed.**

Site 10UFRUSEEP02

Site	Alias	Location
10UFRUSEEP02	10-02	Upper Fruitland Seep #2

Total		Assessment period	
Year(s) sampled	# of Sample Events	Year(s) sampled*	# of Sample Events*
1999	1	1999	1

*Note that not all analytes were necessarily sampled each sample event.

Designated Use	All samples		Assessment period	
	Total number of exceedances	Total analytes exceeded	Total number of exceedances	Total analytes exceeded
FC	0	0	0	0
ScHC	0	0	0	0
A&WHbt (A)	0	0	0	0
A&WHbt (C)	1	1	1	1
LW	0	0	0	0

Analyte	Fish Consumption					
	All samples			Assessment period		
	Exceedances	n	Percent	Exceedances	n	Percent
Arsenic (T)	--	0	--	--	0	--
Mercury (T)	--	0	--	--	0	--
Selenium (T)	0	1	0.0%	0	1	0.0%
Thallium (T)	--	0	--	--	0	--

Analyte	Secondary Human Contact					
	All samples			Assessment period		
	Exceedances	n	Percent	Exceedances	n	Percent
Lead (T)	--	0	--	--	0	--

Analyte	Aquatic and Wildlife Habitat (Acute)					
	All samples			Assessment period		
	Exceedances	n	Percent	Exceedances	n	Percent
Aluminum (T)	--	0	--	--	0	--
Copper (D)	0	1	0.0%	0	1	0.0%
Mercury (T)	--	0	--	--	0	--
Selenium (T)	0	1	0.0%	0	1	0.0%

Analyte	Aquatic and Wildlife Habitat (Chronic)					
	All samples			Assessment period		
	Exceedances	n	Percent	Exceedances	n	Percent
Aluminum (T)	--	0	--	--	0	--
Copper (D)	0	1	0.0%	0	1	0.0%
Cyanide (T)	0	1	0.0%	0	1	0.0%
Lead (D)	0	1	0.0%	0	1	0.0%
Mercury (T)	--	0	--	--	0	--
Selenium (T)	1	1	100.0%	1	1	100.0%

Analyte	Livestock Watering					
	All samples			Assessment period		
	Exceedances	n	Percent	Exceedances	n	Percent
Cyanide (T)	0	1	0.0%	0	1	0.0%
Gross alpha (Adj)	--	0	--	--	0	--
Lead (T)	--	0	--	--	0	--
Selenium (T)	0	1	0.0%	0	1	0.0%

- **Was the minimum number of samples to determine designated use support obtained during the assessment period? No.**
- **Category of Designated Use Support: Category 3 – There is insufficient data to determine if any designated use is supported.**
- **Recommendation is to use data obtained at this site to understand geographic distribution of listed analytes in the watershed.**

Site 10UFRUSEEP03

Site	Alias	Location
10UFRUSEEP03	10-03	Upper Fruitland Seep #3

Total		Assessment period	
Year(s) sampled	# of Sample Events	Year(s) sampled*	# of Sample Events*
1999-2000	2	1999-2000	2

*Note that not all analytes were necessarily sampled each sample event.

Designated Use	All samples		Assessment period	
	Total number of exceedances	Total analytes exceeded	Total number of exceedances	Total analytes exceeded
FC	0	0	0	0
ScHC	0	0	0	0
A&WHbt (A)	0	0	0	0
A&WHbt (C)	1	1	1	1
LW	0	0	0	0

Analyte	Fish Consumption					
	All samples			Assessment period		
	Exceedances	n	Percent	Exceedances	n	Percent
Arsenic (T)	--	0	--	--	0	--
Mercury (T)	--	0	--	--	0	--
Selenium (T)	0	1	0.0%	0	1	0.0%
Thallium (T)	--	0	--	--	0	--

Analyte	Secondary Human Contact					
	All samples			Assessment period		
	Exceedances	n	Percent	Exceedances	n	Percent
Lead (T)	--	0	--	--	0	--

Analyte	Aquatic and Wildlife Habitat (Acute)					
	All samples			Assessment period		
	Exceedances	n	Percent	Exceedances	n	Percent
Aluminum (T)	--	0	--	--	0	--
Copper (D)	0	1	0.0%	0	1	0.0%
Mercury (T)	--	0	--	--	0	--
Selenium (T)	0	1	0.0%	0	1	0.0%

Analyte	Aquatic and Wildlife Habitat (Chronic)					
	All samples			Assessment period		
	Exceedances	n	Percent	Exceedances	n	Percent
Aluminum (T)	--	0	--	--	0	--
Copper (D)	0	1	0.0%	0	1	0.0%
Cyanide (T)	0	1	0.0%	0	1	0.0%
Lead (D)	0	1	0.0%	0	1	0.0%
Mercury (T)	--	0	--	--	0	--
Selenium (T)	1	1	100.0%	1	1	100.0%

Analyte	Livestock Watering					
	All samples			Assessment period		
	Exceedances	n	Percent	Exceedances	n	Percent
Cyanide (T)	0	1	0.0%	0	1	0.0%
Gross alpha (Adj)	--	0	--	--	0	--
Lead (T)	--	0	--	--	0	--
Selenium (T)	0	1	0.0%	0	1	0.0%

- **Was the minimum number of samples to determine designated use support obtained during the assessment period? No.**
- **Category of Designated Use Support: Category 3 – There is insufficient data to determine if any designated use is supported.**
- **Recommendation is to use data obtained at this site to understand geographic distribution of listed analytes in the watershed.**

Site 10OJOAMARI04

Site	Alias	Location
10OJOAMARI04	10-04	Ojo Amarillo Canyon

Total		Assessment period	
Year(s) sampled	# of Sample Events	Year(s) sampled*	# of Sample Events*
1999-2011	17	2009-2011	6

*Note that not all analytes were necessarily sampled each sample event.

Designated Use	All samples		Assessment period	
	Total number of exceedances	Total analytes exceeded	Total number of exceedances	Total analytes exceeded
FC	0	0	0	0
PrHC	0	0	0	0
ScHC	0	0	0	0
A&WHbt (A)	8	1	6	1
A&WHbt (C)	31	3	17	3
LW	0	0	0	0

Analyte	Fish Consumption					
	All samples			Assessment period		
	Exceedances	n	Percent	Exceedances	n	Percent
Arsenic (T)	0	11	0.0%	0	6	0.0%
Mercury (T)	0	17	0.0%	0	6	0.0%
Selenium (T)	0	17	0.0%	0	6	0.0%
Thallium (T)	0	11	0.0%	0	6	0.0%

Analyte	Primary Human Contact					
	All samples			Assessment period		
	Exceedances	n	Percent	Exceedances	n	Percent
Lead (T)	0	10	0.0%	0	6	0.0%

Analyte	Secondary Human Contact					
	All samples			Assessment period		
	Exceedances	n	Percent	Exceedances	n	Percent
Lead (T)	0	10	0.0%	0	6	0.0%

Analyte	Aquatic and Wildlife Habitat (Acute)					
	All samples			Assessment period		
	Exceedances	n	Percent	Exceedances	n	Percent
Aluminum (T)	8	10	80.0%	6	6	100.0%
Copper (D)	0	17	0.0%	0	6	0.0%
Mercury (T)	0	17	0.0%	0	6	0.0%
Selenium (T)	0	17	0.0%	0	6	0.0%

Analyte	Aquatic and Wildlife Habitat (Chronic)					
	All samples			Assessment period		
	Exceedances	n	Percent	Exceedances	n	Percent
Aluminum (T)	8	10	80.0%	6	6	100.0%
Copper (D)	0	17	0.0%	0	6	0.0%
Cyanide (T)	0	17	0.0%	0	6	0.0%
Lead (D)	0	17	0.0%	0	6	0.0%
Mercury (T)	6	17	35.3%	5	6	83.3%
Selenium (T)	17	17	100.0%	6	6	100.0%

Analyte	Livestock Watering					
	All samples			Assessment period		
	Exceedances	n	Percent	Exceedances	n	Percent
Cyanide (T)	0	17	0.0%	0	6	0.0%
Gross alpha (Adj)	0	11	0.0%	0	6	0.0%
Lead (T)	0	10	0.0%	0	6	0.0%
Selenium (T)	0	17	0.0%	0	6	0.0%

- **Was the minimum number of samples to determine designated use support obtained during the assessment period? Yes.**
- **Category of Designated Use Support: Category 5b – At least one designated use is not supported and a review of the designated use and/or water quality standards will be conducted to determine if appropriate for the surface water body.**
- **Category 5b is specific to only the analytes listed above with 2 or more exceedances during the assessment period for the individual designated use. For analytes with 1 or less exceedances during the assessment period the designated use is supported for those analytes. (Note that not all analytes with 0 exceedances are listed in these tables but are contained in the complete analytical data set.)**

Site 10EAGLENES05

Site	Alias	Location
10EAGLENES05	10-05	Eagle Nest Arroyo

Total		Assessment period	
Year(s) sampled	# of Sample Events	Year(s) sampled*	# of Sample Events*
2000-2012	7	2011-2012	5

*Note that not all analytes were necessarily sampled each sample event.

Designated Use	All samples		Assessment period	
	Total number of exceedances	Total analytes exceeded	Total number of exceedances	Total analytes exceeded
FC	0	0	0	0
ScHC	0	0	0	0
A&WHbt (A)	2	2	2	2
A&WHbt (C)	13	4	11	4
LW	1	1	1	1

Analyte	Fish Consumption					
	All samples			Assessment period		
	Exceedances	n	Percent	Exceedances	n	Percent
Arsenic (T)	0	5	0.0%	0	5	0.0%
Mercury (T)	0	7	0.0%	0	5	0.0%
Selenium (T)	0	7	0.0%	0	5	0.0%
Thallium (T)	0	5	0.0%	0	5	0.0%

Analyte	Secondary Human Contact					
	All samples			Assessment period		
	Exceedances	n	Percent	Exceedances	n	Percent
Lead (T)	0	5	0.0%	0	5	0.0%
Analyte	Aquatic and Wildlife Habitat (Acute)					
	All samples			Assessment period		
	Exceedances	n	Percent	Exceedances	n	Percent
Aluminum (T)	1	5	20.0%	1	5	20.0%
Copper (D)	0	7	0.0%	0	5	0.0%
Mercury (T)	0	7	0.0%	0	5	0.0%
Selenium (T)	1	7	14.3%	1	5	20.0%

Analyte	Aquatic and Wildlife Habitat (Chronic)					
	All samples			Assessment period		
	Exceedances	n	Percent	Exceedances	n	Percent
Aluminum (T)	3	5	60.0%	3	5	60.0%
Copper (D)	0	7	0.0%	0	5	0.0%
Cyanide (T)	1	7	14.3%	1	5	20.0%
Lead (D)	0	7	0.0%	0	5	0.0%
Mercury (T)	2	7	28.6%	2	5	40.0%
Selenium (T)	7	7	100.0%	5	5	100.0%

Analyte	Livestock Watering					
	All samples			Assessment period		
	Exceedances	n	Percent	Exceedances	n	Percent
Cyanide (T)	1	7	14.3%	1	5	20.0%
Gross alpha (Adj)	0	5	0.0%	0	5	0.0%
Lead (T)	0	5	0.0%	0	5	0.0%
Selenium (T)	0	7	0.0%	0	5	0.0%

- **Was the minimum number of samples to determine designated use support obtained during the assessment period? Yes.**
- **Category of Designated Use Support: Category 5b – At least one designated use is not supported and a review of the designated use and/or water quality standards will be conducted to determine if appropriate for the surface water body.**
- **Category 5b is specific to only the analytes listed above with 2 or more exceedances during the assessment period for the individual designated use. For analytes with 1 or less exceedances during the assessment period the designated use is supported for those analytes. (Note that not all analytes with 0 exceedances are listed in these tables but are contained in the complete analytical data set.)**

Site 10FRUITLAN06

Site	Alias	Location
10FRUITLAN06	10-06	Fruitland Canal @ Ojo Amarillo

Total		Assessment period	
Year(s) sampled	# of Sample Events	Year(s) sampled*	# of Sample Events*
1999	1	1999	1

*Note that not all analytes were necessarily sampled each sample event.

Designated Use	All samples		Assessment period	
	Total number of exceedances	Total analytes exceeded	Total number of exceedances	Total analytes exceeded
FC	0	0	0	0
ScHC	0	0	0	0
A&WHbt (A)	0	0	0	0
A&WHbt (C)	0	0	0	0
AgWS	0	0	0	0
LW	0	0	0	0

Analyte	Fish Consumption					
	All samples			Assessment period		
	Exceedances	n	Percent	Exceedances	n	Percent
Arsenic (T)	--	0	--	--	0	--
Mercury (T)	0	1	0.0%	0	1	0.0%
Selenium (T)	0	1	0.0%	0	1	0.0%
Thallium (T)	--	0	--	--	0	--

Analyte	Secondary Human Contact					
	All samples			Assessment period		
	Exceedances	n	Percent	Exceedances	n	Percent
Lead (T)	--	0	--	--	0	--

Analyte	Aquatic and Wildlife Habitat (Acute)					
	All samples			Assessment period		
	Exceedances	n	Percent	Exceedances	n	Percent
Aluminum (T)	--	0	--	--	0	--
Copper (D)	0	1	0.0%	0	1	0.0%
Mercury (T)	0	1	0.0%	0	1	0.0%
Selenium (T)	0	1	0.0%	0	1	0.0%

Analyte	Aquatic and Wildlife Habitat (Chronic)					
	All samples			Assessment period		
	Exceedances	n	Percent	Exceedances	n	Percent
Aluminum (T)	--	0	--	--	0	--
Copper (D)	0	1	0.0%	0	1	0.0%
Cyanide (T)	0	1	0.0%	0	1	0.0%
Lead (D)	0	1	0.0%	0	1	0.0%
Mercury (T)	0	1	0.0%	0	1	0.0%
Selenium (T)	0	1	0.0%	0	1	0.0%

Analyte	Agricultural Water Supply					
	All samples			Assessment period		
	Exceedances	n	Percent	Exceedances	n	Percent
Selenium (T)	0	1	0.0%	0	1	0.0%

Analyte	Livestock Watering					
	All samples			Assessment period		
	Exceedances	n	Percent	Exceedances	n	Percent
Cyanide (T)	0	1	0.0%	0	1	0.0%
Gross alpha (Adj)	--	0	--	--	0	--
Lead (T)	--	0	--	--	0	--
Selenium (T)	0	1	0.0%	0	1	0.0%

- **Was the minimum number of samples to determine designated use support obtained during the assessment period? No.**
- **Category of Designated Use Support: Category 3 – There is insufficient data to determine if any designated use is supported.**
- **Recommendation is to use data obtained at this site to understand geographic distribution of listed analytes in the watershed.**

Site 10BITSUIWA07

Site	Alias	Location
10BITSUIWA07	10-07	Bitsui Wash nr N36

Total		Assessment period	
Year(s) sampled	# of Sample Events	Year(s) sampled*	# of Sample Events*
2001-2011	7	2010-2011	5

*Note that not all analytes were necessarily sampled each sample event.

Designated Use	All samples		Assessment period	
	Total number of exceedances	Total analytes exceeded	Total number of exceedances	Total analytes exceeded
FC	1	1	1	1
ScHC	1	1	1	1
A&WHbt (A)	6	3	5	3
A&WHbt (C)	16	4	14	4
LW	1	1	1	1

Analyte	Fish Consumption					
	All samples			Assessment period		
	Exceedances	n	Percent	Exceedances	n	Percent
Arsenic (T)	0	5	0.0%	0	5	0.0%
Mercury (T)	1	7	14.3%	1	5	20.0%
Selenium (T)	0	7	0.0%	0	5	0.0%
Thallium (T)	0	5	0.0%	0	5	0.0%

Analyte	Secondary Human Contact					
	All samples			Assessment period		
	Exceedances	n	Percent	Exceedances	n	Percent
Lead (T)	1	5	20.0%	1	5	20.0%

Analyte	Aquatic and Wildlife Habitat (Acute)					
	All samples			Assessment period		
	Exceedances	n	Percent	Exceedances	n	Percent
Aluminum (T)	3	5	60.0%	3	5	60.0%
Copper (D)	1	7	14.3%	1	5	20.0%
Mercury (T)	0	7	0.0%	0	5	0.0%
Selenium (T)	2	7	28.6%	1	5	20.0%

Analyte	Aquatic and Wildlife Habitat (Chronic)					
	All samples			Assessment period		
	Exceedances	n	Percent	Exceedances	n	Percent
Aluminum (T)	5	5	100.0%	5	5	100.0%
Copper (D)	1	7	14.3%	1	5	20.0%
Cyanide (T)	0	6	0.0%	0	4	0.0%
Lead (D)	0	7	0.0%	0	5	0.0%
Mercury (T)	4	7	57.1%	4	5	80.0%
Selenium (T)	6	7	85.7%	4	5	80.0%

Analyte	Livestock Watering					
	All samples			Assessment period		
	Exceedances	n	Percent	Exceedances	n	Percent
Cyanide (T)	0	6	0.0%	0	4	0.0%
Gross alpha (Adj)	0	5	0.0%	0	5	0.0%
Lead (T)	1	5	20.0%	1	5	20.0%
Selenium (T)	0	7	0.0%	0	5	0.0%

- **Was the minimum number of samples to determine designated use support obtained during the assessment period? Yes.**
- **Category of Designated Use Support: Category 5b – At least one designated use is not supported and a review of the designated use and/or water quality standards will be conducted to determine if appropriate for the surface water body.**
- **Category 5b is specific to only the analytes listed above with 2 or more exceedances during the assessment period for the individual designated use. For analytes with 1 or less exceedances during the assessment period the designated use is supported for those analytes. (Note that not all analytes with 0 exceedances are listed in these tables but are contained in the complete analytical data set.)**

Site 10PINEWASH08

Site	Alias	Location
10PINEWASH08	10-08	Pine Wash

Total		Assessment period	
Year(s) sampled	# of Sample Events	Year(s) sampled*	# of Sample Events*
2001	2	2001	2

*Note that not all analytes were necessarily sampled each sample event.

Designated Use	All samples		Assessment period	
	Total number of exceedances	Total analytes exceeded	Total number of exceedances	Total analytes exceeded
FC	0	0	0	0
ScHC	0	0	0	0
A&WHbt (A)	0	0	0	0
A&WHbt (C)	0	0	0	0
LW	0	0	0	0

Analyte	Fish Consumption					
	All samples			Assessment period		
	Exceedances	n	Percent	Exceedances	n	Percent
Arsenic (T)	--	0	--	--	0	--
Mercury (T)	0	2	0.0%	0	2	0.0%
Selenium (T)	0	2	0.0%	0	2	0.0%
Thallium (T)	--	0	--	--	0	--

Analyte	Secondary Human Contact					
	All samples			Assessment period		
	Exceedances	n	Percent	Exceedances	n	Percent
Lead (T)	--	0	--	--	0	--

Analyte	Aquatic and Wildlife Habitat (Acute)					
	All samples			Assessment period		
	Exceedances	n	Percent	Exceedances	n	Percent
Aluminum (T)	--	0	--	--	0	--
Copper (D)	0	2	0.0%	0	2	0.0%
Mercury (T)	0	2	0.0%	0	2	0.0%
Selenium (T)	0	2	0.0%	0	2	0.0%

Analyte	Aquatic and Wildlife Habitat (Chronic)					
	All samples			Assessment period		
	Exceedances	n	Percent	Exceedances	n	Percent
Aluminum (T)	--	0	--	--	0	--
Copper (D)	0	2	0.0%	0	2	0.0%
Cyanide (T)	0	2	0.0%	0	2	0.0%
Lead (D)	0	2	0.0%	0	2	0.0%
Mercury (T)	0	2	0.0%	0	2	0.0%
Selenium (T)	0	2	0.0%	0	2	0.0%

Analyte	Livestock Watering					
	All samples			Assessment period		
	Exceedances	n	Percent	Exceedances	n	Percent
Cyanide (T)	0	2	0.0%	0	2	0.0%
Gross alpha (Adj)	0	2	0.0%	0	2	0.0%
Lead (T)	--	0	--	--	0	--
Selenium (T)	0	2	0.0%	0	2	0.0%

- **Was the minimum number of samples to determine designated use support obtained during the assessment period? No.**
- **Category of Designated Use Support: Category 3 – There is insufficient data to determine if any designated use is supported.**
- **Recommendation is to use data obtained at this site to understand geographic distribution of listed analytes in the watershed.**

Site 10COVEWASH09

Site	Alias	Location
10COVEWASH09	10-09	Cove Wash

Total		Assessment period	
Year(s) sampled	# of Sample Events	Year(s) sampled*	# of Sample Events*
2001	2	2001	2

*Note that not all analytes were necessarily sampled each sample event.

Designated Use	All samples		Assessment period	
	Total number of exceedances	Total analytes exceeded	Total number of exceedances	Total analytes exceeded
FC	0	0	0	0
ScHC	0	0	0	0
A&WHbt (A)	0	0	0	0
A&WHbt (C)	0	0	0	0
LW	1	1	1	1

Analyte	Fish Consumption					
	All samples			Assessment period		
	Exceedances	n	Percent	Exceedances	n	Percent
Arsenic (T)	--	0	--	--	0	--
Mercury (T)	0	2	0.0%	0	2	0.0%
Selenium (T)	0	2	0.0%	0	2	0.0%
Thallium (T)	--	0	--	--	0	--

Analyte	Secondary Human Contact					
	All samples			Assessment period		
	Exceedances	n	Percent	Exceedances	n	Percent
Lead (T)	--	0	--	--	0	--

Analyte	Aquatic and Wildlife Habitat (Acute)					
	All samples			Assessment period		
	Exceedances	n	Percent	Exceedances	n	Percent
Aluminum (T)	--	0	--	--	0	--
Copper (D)	0	2	0.0%	0	2	0.0%
Mercury (T)	0	2	0.0%	0	2	0.0%
Selenium (T)	0	2	0.0%	0	2	0.0%

Analyte	Aquatic and Wildlife Habitat (Chronic)					
	All samples			Assessment period		
	Exceedances	n	Percent	Exceedances	n	Percent
Aluminum (T)	--	0	--	--	0	--
Copper (D)	0	2	0.0%	0	2	0.0%
Cyanide (T)	0	2	0.0%	0	2	0.0%
Lead (D)	0	2	0.0%	0	2	0.0%
Mercury (T)	0	2	0.0%	0	2	0.0%
Selenium (T)	0	2	0.0%	0	2	0.0%
Analyte	Livestock Watering					
	All samples			Assessment period		
	Exceedances	n	Percent	Exceedances	n	Percent
Cyanide (T)	0	2	0.0%	0	2	0.0%
Gross alpha (Adj)	1	2	50.0%	1	2	50.0%
Lead (T)	--	0	--	--	0	--
Selenium (T)	0	2	0.0%	0	2	0.0%

- **Was the minimum number of samples to determine designated use support obtained during the assessment period? No.**
- **Category of Designated Use Support: Category 3 – There is insufficient data to determine if any designated use is supported.**
- **Recommendation is to use data obtained at this site to understand geographic distribution of listed analytes in the watershed.**
- **Additional Cove Wash surface water quality assessment information may be found in the March 14, 2014 NNEPA WQP document entitled: "Cove Wash Watershed - Surface Water Quality Assessment Report".**

Site 10REDWASHX10

Site	Alias	Location
10REDWASHX10	10-10	Red Wash @ N33

Total		Assessment period	
Year(s) sampled	# of Sample Events	Year(s) sampled*	# of Sample Events*
2001-2013	10	2011-2013	5

*Note that not all analytes were necessarily sampled each sample event.

Designated Use	All samples		Assessment period	
	Total number of exceedances	Total analytes exceeded	Total number of exceedances	Total analytes exceeded
FC	1	1	1	1
ScHC	5	1	4	1
A&WHbt (A)	7	1	5	1
A&WHbt (C)	17	5	15	5
LW	2	2	1	1

Analyte	Fish Consumption					
	All samples			Assessment period		
	Exceedances	n	Percent	Exceedances	n	Percent
Arsenic (T)	1	7	14.3%	1	5	20.0%
Mercury (T)	0	10	0.0%	0	5	0.0%
Selenium (T)	0	10	0.0%	0	5	0.0%
Thallium (T)	0	7	0.0%	0	5	0.0%

Analyte	Secondary Human Contact					
	All samples			Assessment period		
	Exceedances	n	Percent	Exceedances	n	Percent
Lead (T)	5	7	71.4%	4	5	80.0%

Analyte	Aquatic and Wildlife Habitat (Acute)					
	All samples			Assessment period		
	Exceedances	n	Percent	Exceedances	n	Percent
Aluminum (T)	7	7	100.0%	5	5	100.0%
Copper (D)	0	10	0.0%	0	5	0.0%
Mercury (T)	0	10	0.0%	0	5	0.0%
Selenium (T)	0	10	0.0%	0	5	0.0%

Analyte	Aquatic and Wildlife Habitat (Chronic)					
	All samples			Assessment period		
	Exceedances	n	Percent	Exceedances	n	Percent
Aluminum (T)	7	7	100.0%	5	5	100.0%
Copper (D)	1	10	10.0%	1	5	20.0%
Cyanide (T)	0	10	0.0%	0	5	0.0%
Lead (D)	1	10	10.0%	1	5	20.0%
Mercury (T)	5	10	50.0%	5	5	100.0%
Selenium (T)	3	10	30.0%	3	5	60.0%

Analyte	Livestock Watering					
	All samples			Assessment period		
	Exceedances	n	Percent	Exceedances	n	Percent
Cyanide (T)	0	10	0.0%	0	5	0.0%
Gross alpha (Adj)	1	10	10.0%	0	5	0.0%
Lead (T)	1	7	14.3%	1	5	20.0%
Selenium (T)	0	10	0.0%	0	5	0.0%

- **Was the minimum number of samples to determine designated use support obtained during the assessment period? Yes.**
- **Category of Designated Use Support: Category 5b – At least one designated use is not supported and a review of the designated use and/or water quality standards will be conducted to determine if appropriate for the surface water body.**
- **Category 5b is specific to only the analytes listed above with 2 or more exceedances during the assessment period for the individual designated use. For analytes with 1 or less exceedances during the assessment period the designated use is supported for those analytes. (Note that not all analytes with 0 exceedances are listed in these tables but are contained in the complete analytical data set.)**

Site 10SALTCREE11

Site	Alias	Location
10SALTCREE11	10-11	Salt Creek Wash

Total		Assessment period	
Year(s) sampled	# of Sample Events	Year(s) sampled*	# of Sample Events*
2001-2012	7	2011-2012	5

*Note that not all analytes were necessarily sampled each sample event.

Designated Use	All samples		Assessment period	
	Total number of exceedances	Total analytes exceeded	Total number of exceedances	Total analytes exceeded
FC	1	1	1	1
ScHC	1	1	1	1
A&WHbt (A)	3	1	3	1
A&WHbt (C)	17	4	15	4
LW	1	1	1	1

Analyte	Fish Consumption					
	All samples			Assessment period		
	Exceedances	n	Percent	Exceedances	n	Percent
Arsenic (T)	0	5	0.0%	0	5	0.0%
Mercury (T)	1	7	14.3%	1	5	20.0%
Selenium (T)	0	7	0.0%	0	5	0.0%
Thallium (T)	0	5	0.0%	0	5	0.0%

Analyte	Secondary Human Contact					
	All samples			Assessment period		
	Exceedances	n	Percent	Exceedances	n	Percent
Lead (T)	1	5	20.0%	1	5	20.0%

Analyte	Aquatic and Wildlife Habitat (Acute)					
	All samples			Assessment period		
	Exceedances	n	Percent	Exceedances	n	Percent
Aluminum (T)	3	5	60.0%	3	5	60.0%
Copper (D)	0	7	0.0%	0	5	0.0%
Mercury (T)	0	7	0.0%	0	5	0.0%
Selenium (T)	0	7	0.0%	0	5	0.0%

Analyte	Aquatic and Wildlife Habitat (Chronic)					
	All samples			Assessment period		
	Exceedances	n	Percent	Exceedances	n	Percent
Aluminum (T)	5	5	100.0%	5	5	100.0%
Copper (D)	0	7	0.0%	0	5	0.0%
Cyanide (T)	1	7	14.3%	1	5	20.0%
Lead (D)	0	7	0.0%	0	5	0.0%
Mercury (T)	4	7	57.1%	4	5	80.0%
Selenium (T)	7	7	100.0%	5	5	100.0%

Analyte	Livestock Watering					
	All samples			Assessment period		
	Exceedances	n	Percent	Exceedances	n	Percent
Cyanide (T)	1	7	14.3%	1	5	20.0%
Gross alpha (Adj)	0	5	0.0%	0	5	0.0%
Lead (T)	0	5	0.0%	0	5	0.0%
Selenium (T)	0	7	0.0%	0	5	0.0%

- **Was the minimum number of samples to determine designated use support obtained during the assessment period? Yes.**
- **Category of Designated Use Support: Category 5b – At least one designated use is not supported and a review of the designated use and/or water quality standards will be conducted to determine if appropriate for the surface water body.**
- **Category 5b is specific to only the analytes listed above with 2 or more exceedances during the assessment period for the individual designated use. For analytes with 1 or less exceedances during the assessment period the designated use is supported for those analytes. (Note that not all analytes with 0 exceedances are listed in these tables but are contained in the complete analytical data set.)**

Site 10SPRINGBU12

Site	Alias	Location
10SPRINGBU12	10-12	Buffalo Pass Spring

Total		Assessment period	
Year(s) sampled	# of Sample Events	Year(s) sampled*	# of Sample Events*
1996	1	1996	1

*Note that not all analytes were necessarily sampled each sample event.

Designated Use	All samples		Assessment period	
	Total number of exceedances	Total analytes exceeded	Total number of exceedances	Total analytes exceeded
FC	0	0	0	0
ScHC	0	0	0	0
A&WHbt (A)	0	0	0	0
A&WHbt (C)	0	0	0	0
LW	0	0	0	0

Analyte	Fish Consumption					
	All samples			Assessment period		
	Exceedances	n	Percent	Exceedances	n	Percent
Arsenic (T)	--	0	--	--	0	--
Mercury (T)	--	0	--	--	0	--
Selenium (T)	--	0	--	--	0	--
Thallium (T)	--	0	--	--	0	--

Analyte	Secondary Human Contact					
	All samples			Assessment period		
	Exceedances	n	Percent	Exceedances	n	Percent
Lead (T)	--	0	--	--	0	--

Analyte	Aquatic and Wildlife Habitat (Acute)					
	All samples			Assessment period		
	Exceedances	n	Percent	Exceedances	n	Percent
Aluminum (T)	--	0	--	--	0	--
Copper (D)	--	0	--	--	0	--
Mercury (T)	--	0	--	--	0	--
Selenium (T)	--	0	--	--	0	--

Analyte	Aquatic and Wildlife Habitat (Chronic)					
	All samples			Assessment period		
	Exceedances	n	Percent	Exceedances	n	Percent
Aluminum (T)	--	0	--	--	0	--
Copper (D)	--	0	--	--	0	--
Cyanide (T)	--	0	--	--	0	--
Lead (D)	--	0	--	--	0	--
Mercury (T)	--	0	--	--	0	--
Selenium (T)	--	0	--	--	0	--

Analyte	Livestock Watering					
	All samples			Assessment period		
	Exceedances	n	Percent	Exceedances	n	Percent
Cyanide (T)	--	0	--	--	0	--
Gross alpha (Adj)	--	0	--	--	0	--
Lead (T)	--	0	--	--	0	--
Selenium (T)	--	0	--	--	0	--

- **Was the minimum number of samples to determine designated use support obtained during the assessment period? No.**
- **Category of Designated Use Support: Category 3 – There is insufficient data to determine if any designated use is supported.**
- **Recommendation is to use data obtained at this site to understand geographic distribution of listed analytes in the watershed.**

Site 10STANDING13

Site	Alias	Location
10STANDING13	10-13	Standing Redrock Creek

Total		Assessment period	
Year(s) sampled	# of Sample Events	Year(s) sampled*	# of Sample Events*
2001	2	2001	2

*Note that not all analytes were necessarily sampled each sample event.

Designated Use	All samples		Assessment period	
	Total number of exceedances	Total analytes exceeded	Total number of exceedances	Total analytes exceeded
FC	0	0	0	0
ScHC	0	0	0	0
A&WHbt (A)	0	0	0	0
A&WHbt (C)	0	0	0	0
LW	0	0	0	0

Analyte	Fish Consumption					
	All samples			Assessment period		
	Exceedances	n	Percent	Exceedances	n	Percent
Arsenic (T)	--	0	--	--	0	--
Mercury (T)	0	1	0.0%	0	1	0.0%
Selenium (T)	0	1	0.0%	0	1	0.0%
Thallium (T)	--	0	--	--	0	--

Analyte	Secondary Human Contact					
	All samples			Assessment period		
	Exceedances	n	Percent	Exceedances	n	Percent
Lead (T)	--	0	--	--	0	--

Analyte	Aquatic and Wildlife Habitat (Acute)					
	All samples			Assessment period		
	Exceedances	n	Percent	Exceedances	n	Percent
Aluminum (T)	--	0	--	--	0	--
Copper (D)	0	1	0.0%	0	1	0.0%
Mercury (T)	0	1	0.0%	0	1	0.0%
Selenium (T)	0	1	0.0%	0	1	0.0%

Analyte	Aquatic and Wildlife Habitat (Chronic)					
	All samples			Assessment period		
	Exceedances	n	Percent	Exceedances	n	Percent
Aluminum (T)	--	0	--	--	0	--
Copper (D)	0	1	0.0%	0	1	0.0%
Cyanide (T)	0	1	0.0%	0	1	0.0%
Lead (D)	0	1	0.0%	0	1	0.0%
Mercury (T)	0	1	0.0%	0	1	0.0%
Selenium (T)	0	1	0.0%	0	1	0.0%

Analyte	Livestock Watering					
	All samples			Assessment period		
	Exceedances	n	Percent	Exceedances	n	Percent
Cyanide (T)	0	1	0.0%	0	1	0.0%
Gross alpha (Adj)	0	1	0.0%	0	1	0.0%
Lead (T)	--	0	--	--	0	--
Selenium (T)	0	1	0.0%	0	1	0.0%

- **Was the minimum number of samples to determine designated use support obtained during the assessment period? No.**
- **Category of Designated Use Support: Category 3 – There is insufficient data to determine if any designated use is supported.**
- **Recommendation is to use data obtained at this site to understand geographic distribution of listed analytes in the watershed.**

Site 10EAGLENES14

Site	Alias	Location
10EAGLENES14	10-14	Eagle Nest Arroyo seep

Total		Assessment period	
Year(s) sampled	# of Sample Events	Year(s) sampled*	# of Sample Events*
2001	2	2001	2

*Note that not all analytes were necessarily sampled each sample event.

Designated Use	All samples		Assessment period	
	Total number of exceedances	Total analytes exceeded	Total number of exceedances	Total analytes exceeded
FC	0	0	0	0
ScHC	0	0	0	0
A&WHbt (A)	0	0	0	0
A&WHbt (C)	0	0	0	0
LW	0	0	0	0

Analyte	Fish Consumption					
	All samples			Assessment period		
	Exceedances	n	Percent	Exceedances	n	Percent
Arsenic (T)	--	0	--	--	0	--
Mercury (T)	0	1	0.0%	0	1	0.0%
Selenium (T)	0	1	0.0%	0	1	0.0%
Thallium (T)	--	0	--	--	0	--

Analyte	Secondary Human Contact					
	All samples			Assessment period		
	Exceedances	n	Percent	Exceedances	n	Percent
Lead (T)	--	0	--	--	0	--

Analyte	Aquatic and Wildlife Habitat (Acute)					
	All samples			Assessment period		
	Exceedances	n	Percent	Exceedances	n	Percent
Aluminum (T)	--	0	--	--	0	--
Copper (D)	--	0	--	--	0	--
Mercury (T)	0	1	0.0%	0	1	0.0%
Selenium (T)	0	1	0.0%	0	1	0.0%

Analyte	Aquatic and Wildlife Habitat (Chronic)					
	All samples			Assessment period		
	Exceedances	n	Percent	Exceedances	n	Percent
Aluminum (T)	--	0	--	--	0	--
Copper (D)	--	0	--	--	0	--
Cyanide (T)	--	0	--	--	0	--
Lead (D)	0	1	0.0%	0	1	0.0%
Mercury (T)	0	1	0.0%	0	1	0.0%
Selenium (T)	0	1	0.0%	0	1	0.0%

Analyte	Livestock Watering					
	All samples			Assessment period		
	Exceedances	n	Percent	Exceedances	n	Percent
Cyanide (T)	--	0	--	--	0	--
Gross alpha (Adj)	0	1	0.0%	0	1	0.0%
Lead (T)	--	0	--	--	0	--
Selenium (T)	0	1	0.0%	0	1	0.0%

- **Was the minimum number of samples to determine designated use support obtained during the assessment period? No.**
- **Category of Designated Use Support: Category 3 – There is insufficient data to determine if any designated use is supported.**
- **Recommendation is to use data obtained at this site to understand geographic distribution of listed analytes in the watershed.**

Site 10REDWASHX15

Site	Alias	Location
10REDWASHX15	10-15	Red Wash @ Hwy 64

Total		Assessment period	
Year(s) sampled	# of Sample Events	Year(s) sampled*	# of Sample Events*
2001	1	2001	1

*Note that not all analytes were necessarily sampled each sample event.

Designated Use	All samples		Assessment period	
	Total number of exceedances	Total analytes exceeded	Total number of exceedances	Total analytes exceeded
FC	1	1	1	1
ScHC	0	0	0	0
A&WHbt (A)	1	1	1	1
A&WHbt (C)	1	1	1	1
LW	0	0	0	0

Analyte	Fish Consumption					
	All samples			Assessment period		
	Exceedances	n	Percent	Exceedances	n	Percent
Arsenic (T)	--	0	--	--	0	--
Mercury (T)	1	1	100.0%	1	1	100.0%
Selenium (T)	0	1	0.0%	0	1	0.0%
Thallium (T)	--	0	--	--	0	--

Analyte	Secondary Human Contact					
	All samples			Assessment period		
	Exceedances	n	Percent	Exceedances	n	Percent
Lead (T)	--	0	--	--	0	--

Analyte	Aquatic and Wildlife Habitat (Acute)					
	All samples			Assessment period		
	Exceedances	n	Percent	Exceedances	n	Percent
Aluminum (T)	--	0	--	--	0	--
Copper (D)	0	1	0.0%	0	1	0.0%
Mercury (T)	1	1	100.0%	1	1	100.0%
Selenium (T)	0	1	0.0%	0	1	0.0%

Analyte	Aquatic and Wildlife Habitat (Chronic)					
	All samples			Assessment period		
	Exceedances	n	Percent	Exceedances	n	Percent
Aluminum (T)	--	0	--	--	0	--
Copper (D)	0	1	0.0%	0	1	0.0%
Cyanide (T)	0	1	0.0%	0	1	0.0%
Lead (D)	0	1	0.0%	0	1	0.0%
Mercury (T)	1	1	100.0%	1	1	100.0%
Selenium (T)	0	1	0.0%	0	1	0.0%

Analyte	Livestock Watering					
	All samples			Assessment period		
	Exceedances	n	Percent	Exceedances	n	Percent
Cyanide (T)	0	1	0.0%	0	1	0.0%
Gross alpha (Adj)	--	0	--	--	0	--
Lead (T)	--	0	--	--	0	--
Selenium (T)	0	1	0.0%	0	1	0.0%

- **Was the minimum number of samples to determine designated use support obtained during the assessment period? No.**
- **Category of Designated Use Support: Category 3 – There is insufficient data to determine if any designated use is supported.**
- **Recommendation is to use data obtained at this site to understand geographic distribution of listed analytes in the watershed.**

Site 10BECLABIT16

Site	Alias	Location
10BECLABIT16	10-16	Beclabito Spring 1

Total		Assessment period	
Year(s) sampled	# of Sample Events	Year(s) sampled*	# of Sample Events*
2001	1	2001	1

*Note that not all analytes were necessarily sampled each sample event.

Designated Use	All samples		Assessment period	
	Total number of exceedances	Total analytes exceeded	Total number of exceedances	Total analytes exceeded
FC	0	0	0	0
ScHC	0	0	0	0
A&WHbt (A)	0	0	0	0
A&WHbt (C)	0	0	0	0
LW	0	0	0	0

Analyte	Fish Consumption					
	All samples			Assessment period		
	Exceedances	n	Percent	Exceedances	n	Percent
Arsenic (T)	--	0	--	--	0	--
Mercury (T)	--	0	--	--	0	--
Selenium (T)	--	0	--	--	0	--
Thallium (T)	--	0	--	--	0	--

Analyte	Secondary Human Contact					
	All samples			Assessment period		
	Exceedances	n	Percent	Exceedances	n	Percent
Lead (T)	--	0	--	--	0	--

Analyte	Aquatic and Wildlife Habitat (Acute)					
	All samples			Assessment period		
	Exceedances	n	Percent	Exceedances	n	Percent
Aluminum (T)	--	0	--	--	0	--
Copper (D)	--	0	--	--	0	--
Mercury (T)	--	0	--	--	0	--
Selenium (T)	--	0	--	--	0	--

Analyte	Aquatic and Wildlife Habitat (Chronic)					
	All samples			Assessment period		
	Exceedances	n	Percent	Exceedances	n	Percent
Aluminum (T)	--	0	--	--	0	--
Copper (D)	--	0	--	--	0	--
Cyanide (T)	--	0	--	--	0	--
Lead (D)	--	0	--	--	0	--
Mercury (T)	--	0	--	--	0	--
Selenium (T)	--	0	--	--	0	--

Analyte	Livestock Watering					
	All samples			Assessment period		
	Exceedances	n	Percent	Exceedances	n	Percent
Cyanide (T)	--	0	--	--	0	--
Gross alpha (Adj)	--	0	--	--	0	--
Lead (T)	--	0	--	--	0	--
Selenium (T)	--	0	--	--	0	--

- **Was the minimum number of samples to determine designated use support obtained during the assessment period? No.**
- **Category of Designated Use Support: Category 3 – There is insufficient data to determine if any designated use is supported.**
- **Recommendation is to use data obtained at this site to understand geographic distribution of listed analytes in the watershed.**

Site 10BECLABIT17

Site	Alias	Location
10BECLABIT17	10-17	Beclabito Spring 2

Total		Assessment period	
Year(s) sampled	# of Sample Events	Year(s) sampled*	# of Sample Events*
2001	1	2001	1

*Note that not all analytes were necessarily sampled each sample event.

Designated Use	All samples		Assessment period	
	Total number of exceedances	Total analytes exceeded	Total number of exceedances	Total analytes exceeded
FC	0	0	0	0
ScHC	0	0	0	0
A&WHbt (A)	0	0	0	0
A&WHbt (C)	0	0	0	0
LW	0	0	0	0

Analyte	Fish Consumption					
	All samples			Assessment period		
	Exceedances	n	Percent	Exceedances	n	Percent
Arsenic (T)	--	0	--	--	0	--
Mercury (T)	--	0	--	--	0	--
Selenium (T)	--	0	--	--	0	--
Thallium (T)	--	0	--	--	0	--

Analyte	Secondary Human Contact					
	All samples			Assessment period		
	Exceedances	n	Percent	Exceedances	n	Percent
Lead (T)	--	0	--	--	0	--

Analyte	Aquatic and Wildlife Habitat (Acute)					
	All samples			Assessment period		
	Exceedances	n	Percent	Exceedances	n	Percent
Aluminum (T)	--	0	--	--	0	--
Copper (D)	--	0	--	--	0	--
Mercury (T)	--	0	--	--	0	--
Selenium (T)	--	0	--	--	0	--

Analyte	Aquatic and Wildlife Habitat (Chronic)					
	All samples			Assessment period		
	Exceedances	n	Percent	Exceedances	n	Percent
Aluminum (T)	--	0	--	--	0	--
Copper (D)	--	0	--	--	0	--
Cyanide (T)	--	0	--	--	0	--
Lead (D)	--	0	--	--	0	--
Mercury (T)	--	0	--	--	0	--
Selenium (T)	--	0	--	--	0	--

Analyte	Livestock Watering					
	All samples			Assessment period		
	Exceedances	n	Percent	Exceedances	n	Percent
Cyanide (T)	--	0	--	--	0	--
Gross alpha (Adj)	--	0	--	--	0	--
Lead (T)	--	0	--	--	0	--
Selenium (T)	--	0	--	--	0	--

- Was the minimum number of samples to determine designated use support obtained during the assessment period? **No.**
- **Category of Designated Use Support: Category 3 – There is insufficient data to determine if any designated use is supported.**
- **Recommendation is to use data obtained at this site to understand geographic distribution of listed analytes in the watershed.**

Site 10UFRUSEEP18

Site	Alias	Location
10UFRUSEEP18	10-18	Upper Fruitland Seep #3 east

Total		Assessment period	
Year(s) sampled	# of Sample Events	Year(s) sampled*	# of Sample Events*
2000	1	2000	1

*Note that not all analytes were necessarily sampled each sample event.

Designated Use	All samples		Assessment period	
	Total number of exceedances	Total analytes exceeded	Total number of exceedances	Total analytes exceeded
FC	2	2	2	2
ScHC	0	0	0	0
A&WHbt (A)	1	1	1	1
A&WHbt (C)	2	2	2	2
LW	0	0	0	0

Analyte	Fish Consumption					
	All samples			Assessment period		
	Exceedances	n	Percent	Exceedances	n	Percent
Arsenic (T)	1	1	100.0%	1	1	100.0%
Mercury (T)	1	1	100.0%	1	1	100.0%
Selenium (T)	0	1	0.0%	0	1	0.0%
Thallium (T)	0	1	0.0%	0	1	0.0%

Analyte	Secondary Human Contact					
	All samples			Assessment period		
	Exceedances	n	Percent	Exceedances	n	Percent
Lead (T)	--	0	--	--	0	--

Analyte	Aquatic and Wildlife Habitat (Acute)					
	All samples			Assessment period		
	Exceedances	n	Percent	Exceedances	n	Percent
Aluminum (T)	1	1	100.0%	1	1	100.0%
Copper (D)	0	1	0.0%	0	1	0.0%
Mercury (T)	0	1	0.0%	0	1	0.0%
Selenium (T)	0	1	0.0%	0	1	0.0%

Analyte	Aquatic and Wildlife Habitat (Chronic)					
	All samples			Assessment period		
	Exceedances	n	Percent	Exceedances	n	Percent
Aluminum (T)	1	1	100.0%	1	1	100.0%
Copper (D)	0	1	0.0%	0	1	0.0%
Cyanide (T)	--	0	--	--	0	--
Lead (D)	0	1	0.0%	0	1	0.0%
Mercury (T)	1	1	100.0%	1	1	100.0%
Selenium (T)	0	1	0.0%	0	1	0.0%

Analyte	Livestock Watering					
	All samples			Assessment period		
	Exceedances	n	Percent	Exceedances	n	Percent
Cyanide (T)	--	0	--	--	0	--
Gross alpha (Adj)	--	0	--	--	0	--
Lead (T)	--	0	--	--	0	--
Selenium (T)	0	1	0.0%	0	1	0.0%

- **Was the minimum number of samples to determine designated use support obtained during the assessment period? No.**
- **Category of Designated Use Support: Category 3 – There is insufficient data to determine if any designated use is supported.**
- **Recommendation is to use data obtained at this site to understand geographic distribution of listed analytes in the watershed.**

Site 10UFRUSEEP19

Site	Alias	Location
10UFRUSEEP19	10-19	Upper Fruitland Seep #3 west

Total		Assessment period	
Year(s) sampled	# of Sample Events	Year(s) sampled*	# of Sample Events*
2000	1	2000	1

*Note that not all analytes were necessarily sampled each sample event.

Designated Use	All samples		Assessment period	
	Total number of exceedances	Total analytes exceeded	Total number of exceedances	Total analytes exceeded
FC	0	0	0	0
ScHC	0	0	0	0
A&WHbt (A)	2	2	2	2
A&WHbt (C)	2	2	2	2
LW	1	1	1	1

Analyte	Fish Consumption					
	All samples			Assessment period		
	Exceedances	n	Percent	Exceedances	n	Percent
Arsenic (T)	0	1	0.0%	0	1	0.0%
Mercury (T)	0	1	0.0%	0	1	0.0%
Selenium (T)	0	1	0.0%	0	1	0.0%
Thallium (T)	0	1	0.0%	0	1	0.0%

Analyte	Secondary Human Contact					
	All samples			Assessment period		
	Exceedances	n	Percent	Exceedances	n	Percent
Lead (T)	--	0	--	--	0	--

Analyte	Aquatic and Wildlife Habitat (Acute)					
	All samples			Assessment period		
	Exceedances	n	Percent	Exceedances	n	Percent
Aluminum (T)	1	1	100.0%	1	1	100.0%
Copper (D)	0	1	0.0%	0	1	0.0%
Mercury (T)	0	1	0.0%	0	1	0.0%
Selenium (T)	1	1	100.0%	1	1	100.0%

Analyte	Aquatic and Wildlife Habitat (Chronic)					
	All samples			Assessment period		
	Exceedances	n	Percent	Exceedances	n	Percent
Aluminum (T)	1	1	100.0%	1	1	100.0%
Copper (D)	0	1	0.0%	0	1	0.0%
Cyanide (T)	--	0	--	--	0	--
Lead (D)	0	1	0.0%	0	1	0.0%
Mercury (T)	0	1	0.0%	0	1	0.0%
Selenium (T)	1	1	100.0%	1	1	100.0%

Analyte	Livestock Watering					
	All samples			Assessment period		
	Exceedances	n	Percent	Exceedances	n	Percent
Cyanide (T)	--	0	--	--	0	--
Gross alpha (Adj)	--	0	--	--	0	--
Lead (T)	--	0	--	--	0	--
Selenium (T)	1	1	100.0%	1	1	100.0%

- **Was the minimum number of samples to determine designated use support obtained during the assessment period? No.**
- **Category of Designated Use Support: Category 3 – There is insufficient data to determine if any designated use is supported.**
- **Recommendation is to use data obtained at this site to understand geographic distribution of listed analytes in the watershed.**

Site 10OJOAMARI20

Site	Alias	Location
10OJOAMARI20	10-20	Ojo Amarillo Canyon @ Loop Road

Total		Assessment period	
Year(s) sampled	# of Sample Events	Year(s) sampled*	# of Sample Events*
2002-2004	3	2002-2004	3

*Note that not all analytes were necessarily sampled each sample event.

Designated Use	All samples		Assessment period	
	Total number of exceedances	Total analytes exceeded	Total number of exceedances	Total analytes exceeded
FC	0	0	0	0
PrHC	0	0	0	0
ScHC	0	0	0	0
A&WHbt (A)	0	0	0	0
A&WHbt (C)	0	0	0	0
LW	0	0	0	0

Analyte	Fish Consumption					
	All samples			Assessment period		
	Exceedances	n	Percent	Exceedances	n	Percent
Arsenic (T)	--	0	--	--	0	--
Mercury (T)	--	0	--	--	0	--
Selenium (T)	--	0	--	--	0	--
Thallium (T)	--	0	--	--	0	--

Analyte	Primary Human Contact					
	All samples			Assessment period		
	Exceedances	n	Percent	Exceedances	n	Percent
Lead (T)	--	0	--	--	0	--

Analyte	Secondary Human Contact					
	All samples			Assessment period		
	Exceedances	n	Percent	Exceedances	n	Percent
Lead (T)	--	0	--	--	0	--

Analyte	Aquatic and Wildlife Habitat (Acute)					
	All samples			Assessment period		
	Exceedances	n	Percent	Exceedances	n	Percent
Aluminum (T)	--	0	--	--	0	--
Copper (D)	--	0	--	--	0	--
Mercury (T)	--	0	--	--	0	--
Selenium (T)	--	0	--	--	0	--

Analyte	Aquatic and Wildlife Habitat (Chronic)					
	All samples			Assessment period		
	Exceedances	n	Percent	Exceedances	n	Percent
Aluminum (T)	--	0	--	--	0	--
Copper (D)	--	0	--	--	0	--
Cyanide (T)	--	0	--	--	0	--
Lead (D)	--	0	--	--	0	--
Mercury (T)	--	0	--	--	0	--
Selenium (T)	--	0	--	--	0	--

Analyte	Livestock Watering					
	All samples			Assessment period		
	Exceedances	n	Percent	Exceedances	n	Percent
Cyanide (T)	--	0	--	--	0	--
Gross alpha (Adj)	--	0	--	--	0	--
Lead (T)	--	0	--	--	0	--
Selenium (T)	--	0	--	--	0	--

- **Was the minimum number of samples to determine designated use support obtained during the assessment period? No.**
- **Category of Designated Use Support: Category 3 – There is insufficient data to determine if any designated use is supported.**
- **Recommendation is to use data obtained at this site to understand geographic distribution of listed analytes in the watershed.**

Site 10BECLABIT21

Site	Alias	Location
10BECLABIT21	10-21	Beclabito Wash

Total		Assessment period	
Year(s) sampled	# of Sample Events	Year(s) sampled*	# of Sample Events*
2002	1	2002	1

*Note that not all analytes were necessarily sampled each sample event.

Designated Use	All samples		Assessment period	
	Total number of exceedances	Total analytes exceeded	Total number of exceedances	Total analytes exceeded
FC	0	0	0	0
ScHC	0	0	0	0
A&WHbt (A)	0	0	0	0
A&WHbt (C)	0	0	0	0
LW	0	0	0	0

Analyte	Fish Consumption					
	All samples			Assessment period		
	Exceedances	n	Percent	Exceedances	n	Percent
Arsenic (T)	--	0	--	--	0	--
Mercury (T)	--	0	--	--	0	--
Selenium (T)	--	0	--	--	0	--
Thallium (T)	--	0	--	--	0	--

Analyte	Secondary Human Contact					
	All samples			Assessment period		
	Exceedances	n	Percent	Exceedances	n	Percent
Lead (T)	--	0	--	--	0	--

Analyte	Aquatic and Wildlife Habitat (Acute)					
	All samples			Assessment period		
	Exceedances	n	Percent	Exceedances	n	Percent
Aluminum (T)	--	0	--	--	0	--
Copper (D)	--	0	--	--	0	--
Mercury (T)	--	0	--	--	0	--
Selenium (T)	--	0	--	--	0	--

Analyte	Aquatic and Wildlife Habitat (Chronic)					
	All samples			Assessment period		
	Exceedances	n	Percent	Exceedances	n	Percent
Aluminum (T)	--	0	--	--	0	--
Copper (D)	--	0	--	--	0	--
Cyanide (T)	--	0	--	--	0	--
Lead (D)	--	0	--	--	0	--
Mercury (T)	--	0	--	--	0	--
Selenium (T)	--	0	--	--	0	--

Analyte	Livestock Watering					
	All samples			Assessment period		
	Exceedances	n	Percent	Exceedances	n	Percent
Cyanide (T)	--	0	--	--	0	--
Gross alpha (Adj)	0	1	0.0%	0	1	0.0%
Lead (T)	--	0	--	--	0	--
Selenium (T)	--	0	--	--	0	--

- **Was the minimum number of samples to determine designated use support obtained during the assessment period? No.**
- **Category of Designated Use Support: Category 3 – There is insufficient data to determine if any designated use is supported.**
- **Recommendation is to use data obtained at this site to understand geographic distribution of listed analytes in the watershed.**

Site 10BITSUIWA22

Site	Alias	Location
10BITSUIWA22	10-22	Bitsui Wash nr San Juan River

Total		Assessment period	
Year(s) sampled	# of Sample Events	Year(s) sampled*	# of Sample Events*
2003	1	2003	1

*Note that not all analytes were necessarily sampled each sample event.

Designated Use	All samples		Assessment period	
	Total number of exceedances	Total analytes exceeded	Total number of exceedances	Total analytes exceeded
FC	0	0	0	0
ScHC	0	0	0	0
A&WHbt (A)	0	0	0	0
A&WHbt (C)	0	0	0	0
LW	0	0	0	0

Analyte	Fish Consumption					
	All samples			Assessment period		
	Exceedances	n	Percent	Exceedances	n	Percent
Arsenic (T)	--	0	--	--	0	--
Mercury (T)	--	0	--	--	0	--
Selenium (T)	--	0	--	--	0	--
Thallium (T)	--	0	--	--	0	--

Analyte	Secondary Human Contact					
	All samples			Assessment period		
	Exceedances	n	Percent	Exceedances	n	Percent
Lead (T)	--	0	--	--	0	--

Analyte	Aquatic and Wildlife Habitat (Acute)					
	All samples			Assessment period		
	Exceedances	n	Percent	Exceedances	n	Percent
Aluminum (T)	--	0	--	--	0	--
Copper (D)	--	0	--	--	0	--
Mercury (T)	--	0	--	--	0	--
Selenium (T)	--	0	--	--	0	--

Analyte	Aquatic and Wildlife Habitat (Chronic)					
	All samples			Assessment period		
	Exceedances	n	Percent	Exceedances	n	Percent
Aluminum (T)	--	0	--	--	0	--
Copper (D)	--	0	--	--	0	--
Cyanide (T)	--	0	--	--	0	--
Lead (D)	--	0	--	--	0	--
Mercury (T)	--	0	--	--	0	--
Selenium (T)	--	0	--	--	0	--

Analyte	Livestock Watering					
	All samples			Assessment period		
	Exceedances	n	Percent	Exceedances	n	Percent
Cyanide (T)	--	0	--	--	0	--
Gross alpha (Adj)	--	0	--	--	0	--
Lead (T)	--	0	--	--	0	--
Selenium (T)	--	0	--	--	0	--

- **Was the minimum number of samples to determine designated use support obtained during the assessment period? No.**
- **Category of Designated Use Support: Category 3 – There is insufficient data to determine if any designated use is supported.**
- **Recommendation is to use data obtained at this site to understand geographic distribution of listed analytes in the watershed.**

Site 10BAKERARR23

Site	Alias	Location
10BAKERARR23	10-23	Baker Arroyo

Total		Assessment period	
Year(s) sampled	# of Sample Events	Year(s) sampled*	# of Sample Events*
2003-2012	12	2011-2012	6

*Note that not all analytes were necessarily sampled each sample event.

Designated Use	All samples		Assessment period	
	Total number of exceedances	Total analytes exceeded	Total number of exceedances	Total analytes exceeded
FC	0	0	0	0
ScHC	0	0	0	0
A&WHbt (A)	6	1	3	1
A&WHbt (C)	19	3	12	3
AgWS	1	1	1	1
LW	0	0	0	0

Analyte	Fish Consumption					
	All samples			Assessment period		
	Exceedances	n	Percent	Exceedances	n	Percent
Arsenic (T)	0	9	0.0%	0	5	0.0%
Mercury (T)	0	9	0.0%	0	5	0.0%
Selenium (T)	0	9	0.0%	0	5	0.0%
Thallium (T)	0	9	0.0%	0	5	0.0%

Analyte	Secondary Human Contact					
	All samples			Assessment period		
	Exceedances	n	Percent	Exceedances	n	Percent
Lead (T)	0	9	0.0%	0	5	0.0%

Analyte	Aquatic and Wildlife Habitat (Acute)					
	All samples			Assessment period		
	Exceedances	n	Percent	Exceedances	n	Percent
Aluminum (T)	6	8	75.0%	3	5	60.0%
Copper (D)	0	9	0.0%	0	5	0.0%
Mercury (T)	0	9	0.0%	0	5	0.0%
Selenium (T)	0	9	0.0%	0	5	0.0%

Analyte	Aquatic and Wildlife Habitat (Chronic)					
	All samples			Assessment period		
	Exceedances	n	Percent	Exceedances	n	Percent
Aluminum (T)	8	8	100.0%	5	5	100.0%
Copper (D)	0	9	0.0%	0	5	0.0%
Cyanide (T)	0	9	0.0%	0	5	0.0%
Lead (D)	0	9	0.0%	0	5	0.0%
Mercury (T)	6	9	66.7%	4	5	80.0%
Selenium (T)	5	9	55.6%	3	5	60.0%

Analyte	Agricultural Water Supply					
	All samples			Assessment period		
	Exceedances	n	Percent	Exceedances	n	Percent
Selenium (T)	1	9	11.1%	1	5	20.0%

Analyte	Livestock Watering					
	All samples			Assessment period		
	Exceedances	n	Percent	Exceedances	n	Percent
Cyanide (T)	0	9	0.0%	0	5	0.0%
Gross alpha (Adj)	0	7	0.0%	0	5	0.0%
Lead (T)	0	9	0.0%	0	5	0.0%
Selenium (T)	0	9	0.0%	0	5	0.0%

- **Was the minimum number of samples to determine designated use support obtained during the assessment period? Yes.**
- **Category of Designated Use Support: Category 5b – At least one designated use is not supported and a review of the designated use and/or water quality standards will be conducted to determine if appropriate for the surface water body.**
- **Category 5b is specific to only the analytes listed above with 2 or more exceedances during the assessment period for the individual designated use. For analytes with 1 or less exceedances during the assessment period the designated use is supported for those analytes. (Note that not all analytes with 0 exceedances are listed in these tables but are contained in the complete analytical data set.)**

Site 10SHOEGAME24

Site	Alias	Location
10SHOEGAME24	10-24	Shoe Game Wash @ Hwy 64

Total		Assessment period	
Year(s) sampled	# of Sample Events	Year(s) sampled*	# of Sample Events*
2005	1	2005	1

*Note that not all analytes were necessarily sampled each sample event.

Designated Use	All samples		Assessment period	
	Total number of exceedances	Total analytes exceeded	Total number of exceedances	Total analytes exceeded
FC	0	0	0	0
ScHC	0	0	0	0
A&WHbt (A)	0	0	0	0
A&WHbt (C)	1	1	1	1
LW	0	0	0	0

Analyte	Fish Consumption					
	All samples			Assessment period		
	Exceedances	n	Percent	Exceedances	n	Percent
Arsenic (T)	0	1	0.0%	0	1	0.0%
Mercury (T)	0	1	0.0%	0	1	0.0%
Selenium (T)	0	1	0.0%	0	1	0.0%
Thallium (T)	0	1	0.0%	0	1	0.0%

Analyte	Secondary Human Contact					
	All samples			Assessment period		
	Exceedances	n	Percent	Exceedances	n	Percent
Lead (T)	0	1	0.0%	0	1	0.0%

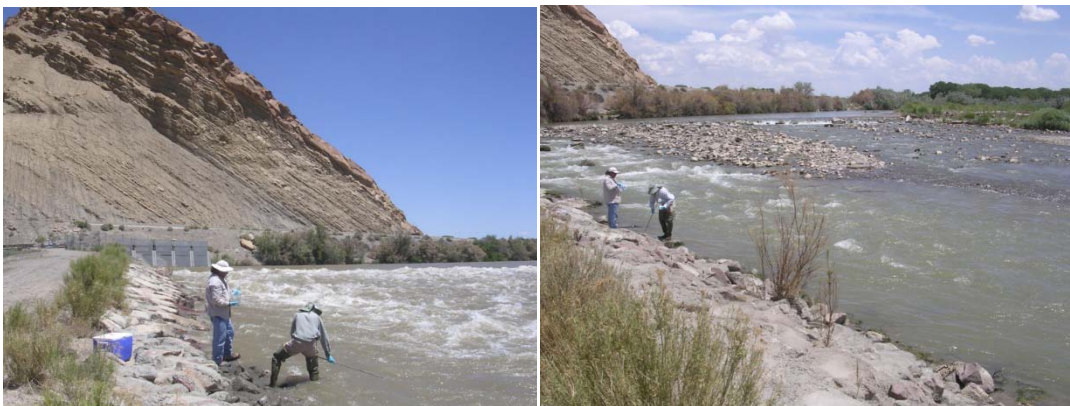
Analyte	Aquatic and Wildlife Habitat (Acute)					
	All samples			Assessment period		
	Exceedances	n	Percent	Exceedances	n	Percent
Aluminum (T)	0	1	0.0%	0	1	0.0%
Copper (D)	0	1	0.0%	0	1	0.0%
Mercury (T)	0	1	0.0%	0	1	0.0%
Selenium (T)	0	1	0.0%	0	1	0.0%

Analyte	Aquatic and Wildlife Habitat (Chronic)					
	All samples			Assessment period		
	Exceedances	n	Percent	Exceedances	n	Percent
Aluminum (T)	0	1	0.0%	0	1	0.0%
Copper (D)	0	1	0.0%	0	1	0.0%
Cyanide (T)	0	1	0.0%	0	1	0.0%
Lead (D)	0	1	0.0%	0	1	0.0%
Mercury (T)	0	1	0.0%	0	1	0.0%
Selenium (T)	1	1	100.0%	1	1	100.0%

Analyte	Livestock Watering					
	All samples			Assessment period		
	Exceedances	n	Percent	Exceedances	n	Percent
Cyanide (T)	0	1	0.0%	0	1	0.0%
Gross alpha (Adj)	0	1	0.0%	0	1	0.0%
Lead (T)	0	1	0.0%	0	1	0.0%
Selenium (T)	0	1	0.0%	0	1	0.0%

- **Was the minimum number of samples to determine designated use support obtained during the assessment period? No.**
- **Category of Designated Use Support: Category 3 – There is insufficient data to determine if any designated use is supported.**
- **Recommendation is to use data obtained at this site to understand geographic distribution of listed analytes in the watershed.**

Site 10SANJUANR25



Site	Alias	Location
10SANJUANR25	10-25	San Juan River

Total		Assessment period	
Year(s) sampled	# of Sample Events	Year(s) sampled*	# of Sample Events*
2006-2015	9	2011-2012	5

*Note that not all analytes were necessarily sampled each sample event.

Designated Use	All samples		Assessment period	
	Total number of exceedances	Total analytes exceeded	Total number of exceedances	Total analytes exceeded
Dom	4	2	1	1
FC	0	0	0	0
PrHC	3	1	1	1
ScHC	3	1	1	1
A&WHbt (A)	3	1	2	1
A&WHbt (C)	15	3	10	2
AgWS	0	0	0	0
LW	1	1	0	0

Analyte	Domestic Water Supply					
	All samples			Assessment period		
	Exceedances	n	Percent	Exceedances	n	Percent
Arsenic (T)	0	9	0.0%	0	5	0.0%
Barium (T)	0	9	0.0%	0	5	0.0%
Beryllium (T)	0	9	0.0%	0	5	0.0%
Chromium (T)	0	9	0.0%	0	5	0.0%
Gross alpha (Adj)	1	8	12.5%	0	5	0.0%
Lead (T)	3	9	33.3%	1	5	20.0%

Analyte	Fish Consumption					
	All samples			Assessment period		
	Exceedances	n	Percent	Exceedances	n	Percent
Arsenic (T)	0	9	0.0%	0	5	0.0%
Mercury (T)	0	9	0.0%	0	5	0.0%
Selenium (T)	0	9	0.0%	0	5	0.0%
Thallium (T)	0	9	0.0%	0	5	0.0%

Analyte	Primary Human Contact					
	All samples			Assessment period		
	Exceedances	n	Percent	Exceedances	n	Percent
Lead (T)	3	9	33.3%	1	5	20.0%

Analyte	Secondary Human Contact					
	All samples			Assessment period		
	Exceedances	n	Percent	Exceedances	n	Percent
Lead (T)	3	9	33.3%	1	5	20.0%

Analyte	Aquatic and Wildlife Habitat (Acute)					
	All samples			Assessment period		
	Exceedances	n	Percent	Exceedances	n	Percent
Aluminum (T)	3	6	50.0%	2	5	40.0%
Copper (D)	0	9	0.0%	0	5	0.0%
Mercury (T)	0	9	0.0%	0	5	0.0%
Selenium (T)	0	9	0.0%	0	5	0.0%

Analyte	Aquatic and Wildlife Habitat (Chronic)					
	All samples			Assessment period		
	Exceedances	n	Percent	Exceedances	n	Percent
Aluminum (T)	6	6	100.0%	5	5	100.0%
Copper (D)	0	9	0.0%	0	5	0.0%
Cyanide (T)	0	9	0.0%	0	5	0.0%
Lead (D)	0	9	0.0%	0	5	0.0%
Mercury (T)	8	9	88.9%	5	5	100.0%
Selenium (T)	1	9	11.1%	0	5	0.0%

Analyte	Agricultural Water Supply					
	All samples			Assessment period		
	Exceedances	n	Percent	Exceedances	n	Percent
Selenium (T)	0	9	0.0%	0	5	0.0%

Analyte	Livestock Watering					
	All samples			Assessment period		
	Exceedances	n	Percent	Exceedances	n	Percent
Cyanide (T)	0	9	0.0%	0	5	0.0%
Gross alpha (Adj)	1	8	12.5%	0	5	0.0%
Lead (T)	0	9	0.0%	0	5	0.0%
Selenium (T)	0	9	0.0%	0	5	0.0%

- **Was the minimum number of samples to determine designated use support obtained during the assessment period? Yes.**
- **Category of Designated Use Support: Category 5b – At least one designated use is not supported and a review of the designated use and/or water quality**

standards will be conducted to determine if appropriate for the surface water body.

- **Category 5b is specific to only the analytes listed above with 2 or more exceedances during the assessment period for the individual designated use. For analytes with 1 or less exceedances during the assessment period the designated use is supported for those analytes. (Note that not all analytes with 0 exceedances are listed in these tables but are contained in the complete analytical data set.)**

Site 10SANJUANR26



Site	Alias	Location
10SANJUANR26	10-26	San Juan River

Total		Assessment period	
Year(s) sampled	# of Sample Events	Year(s) sampled*	# of Sample Events*
2006-2015	9	2011-2012	5

*Note that not all analytes were necessarily sampled each sample event.

Designated Use	All samples		Assessment period	
	Total number of exceedances	Total analytes exceeded	Total number of exceedances	Total analytes exceeded
Dom	12	6	4	3
FC	1	1	0	0
PrHC	4	1	2	1
ScHC	4	1	2	1
A&WHbt (A)	5	1	4	1
A&WHbt (C)	16	3	11	3
AgWS	0	0	0	0
LW	3	2	0	0

Analyte	Domestic Water Supply					
	All samples			Assessment period		
	Exceedances	n	Percent	Exceedances	n	Percent
Arsenic (T)	2	9	22.2%	1	5	20.0%
Barium (T)	2	9	22.2%	1	5	20.0%
Beryllium (T)	1	9	11.1%	0	5	0.0%
Chromium (T)	1	9	11.1%	0	5	0.0%
Gross alpha (Adj)	2	8	25.0%	0	5	0.0%
Lead (T)	4	9	44.4%	2	5	40.0%

Analyte	Fish Consumption					
	All samples			Assessment period		
	Exceedances	n	Percent	Exceedances	n	Percent
Arsenic (T)	0	9	0.0%	0	5	0.0%
Mercury (T)	1	9	11.1%	0	5	0.0%
Selenium (T)	0	9	0.0%	0	5	0.0%
Thallium (T)	1	9	11.1%	1	5	20.0%

Analyte	Primary Human Contact					
	All samples			Assessment period		
	Exceedances	n	Percent	Exceedances	n	Percent
Lead (T)	4	9	44.4%	2	5	40.0%

Analyte	Secondary Human Contact					
	All samples			Assessment period		
	Exceedances	n	Percent	Exceedances	n	Percent
Lead (T)	4	9	44.4%	2	5	40.0%

Analyte	Aquatic and Wildlife Habitat (Acute)					
	All samples			Assessment period		
	Exceedances	n	Percent	Exceedances	n	Percent
Aluminum (T)	5	6	83.3%	4	5	80.0%
Copper (D)	0	9	0.0%	0	5	0.0%
Mercury (T)	0	9	0.0%	0	5	0.0%
Selenium (T)	0	9	0.0%	0	5	0.0%

Analyte	Aquatic and Wildlife Habitat (Chronic)					
	All samples			Assessment period		
	Exceedances	n	Percent	Exceedances	n	Percent
Aluminum (T)	6	6	100.0%	5	5	100.0%
Copper (D)	0	9	0.0%	0	5	0.0%
Cyanide (T)	0	9	0.0%	0	5	0.0%
Lead (D)	0	9	0.0%	0	5	0.0%
Mercury (T)	9	9	100.0%	5	5	100.0%
Selenium (T)	1	9	11.1%	1	5	20.0%

Analyte	Agricultural Water Supply					
	All samples			Assessment period		
	Exceedances	n	Percent	Exceedances	n	Percent
Selenium (T)	0	9	0.0%	0	5	0.0%

Analyte	Livestock Watering					
	All samples			Assessment period		
	Exceedances	n	Percent	Exceedances	n	Percent
Cyanide (T)	0	9	0.0%	0	5	0.0%
Gross alpha (Adj)	2	8	25.0%	0	5	0.0%
Lead (T)	1	9	11.1%	0	5	0.0%
Selenium (T)	0	9	0.0%	0	5	0.0%

- Was the minimum number of samples to determine designated use support obtained during the assessment period? Yes.
- Category of Designated Use Support: Category 5b – At least one designated use is not supported and a review of the designated use and/or water quality

standards will be conducted to determine if appropriate for the surface water body.

- **Category 5b is specific to only the analytes listed above with 2 or more exceedances during the assessment period for the individual designated use. For analytes with 1 or less exceedances during the assessment period the designated use is supported for those analytes. (Note that not all analytes with 0 exceedances are listed in these tables but are contained in the complete analytical data set.)**

Site 10MANYDEVI27

Site	Alias	Location
10MANYDEVI27	10-27	Many Devils Wash

Total		Assessment period	
Year(s) sampled	# of Sample Events	Year(s) sampled*	# of Sample Events*
2009-2013	6	2011-2013	5

*Note that not all analytes were necessarily sampled each sample event.

Designated Use	All samples		Assessment period	
	Total number of exceedances	Total analytes exceeded	Total number of exceedances	Total analytes exceeded
FC	6	2	5	2
ScHC	2	1	1	1
A&WHbt (A)	10	3	7	2
A&WHbt (C)	17	4	13	3
LW	10	3	9	3

Analyte	Fish Consumption					
	All samples			Assessment period		
	Exceedances	n	Percent	Exceedances	n	Percent
Arsenic (T)	1	6	16.7%	1	5	20.0%
Mercury (T)	0	6	0.0%	0	5	0.0%
Selenium (T)	5	6	83.3%	4	5	80.0%
Thallium (T)	0	6	0.0%	0	5	0.0%

Analyte	Secondary Human Contact					
	All samples			Assessment period		
	Exceedances	n	Percent	Exceedances	n	Percent
Lead (T)	2	6	33.3%	1	5	20.0%

Analyte	Aquatic and Wildlife Habitat (Acute)					
	All samples			Assessment period		
	Exceedances	n	Percent	Exceedances	n	Percent
Aluminum (T)	3	6	50.0%	2	5	40.0%
Copper (D)	1	6	16.7%	0	5	0.0%
Mercury (T)	0	6	0.0%	0	5	0.0%
Selenium (T)	6	6	100.0%	5	5	100.0%

Analyte	Aquatic and Wildlife Habitat (Chronic)					
	All samples			Assessment period		
	Exceedances	n	Percent	Exceedances	n	Percent
Aluminum (T)	6	6	100.0%	5	5	100.0%
Copper (D)	1	6	16.7%	0	5	0.0%
Cyanide (T)	0	6	0.0%	0	5	0.0%
Lead (D)	0	6	0.0%	0	5	0.0%
Mercury (T)	4	6	66.7%	3	5	60.0%
Selenium (T)	6	6	100.0%	5	5	100.0%

Analyte	Livestock Watering					
	All samples			Assessment period		
	Exceedances	n	Percent	Exceedances	n	Percent
Cyanide (T)	0	6	0.0%	0	5	0.0%
Gross alpha (Adj)	3	6	50.0%	3	5	60.0%
Lead (T)	1	6	16.7%	1	5	20.0%
Selenium (T)	6	6	100.0%	5	5	100.0%

- **Was the minimum number of samples to determine designated use support obtained during the assessment period? Yes.**
- **Category of Designated Use Support: Category 5b – At least one designated use is not supported and a review of the designated use and/or water quality standards will be conducted to determine if appropriate for the surface water body.**
- **Category 5b is specific to only the analytes listed above with 2 or more exceedances during the assessment period for the individual designated use. For analytes with 1 or less exceedances during the assessment period the designated use is supported for those analytes. (Note that not all analytes**

with 0 exceedances are listed in these tables but are contained in the complete analytical data set.)

Site 10MANYDEVI28

Site	Alias	Location
10MANYDEVI28	10-28	Many Devils Wash

Total		Assessment period	
Year(s) sampled	# of Sample Events	Year(s) sampled*	# of Sample Events*
2009	1	2009	1

*Note that not all analytes were necessarily sampled each sample event.

Designated Use	All samples		Assessment period	
	Total number of exceedances	Total analytes exceeded	Total number of exceedances	Total analytes exceeded
FC	1	1	1	1
ScHC	0	0	0	0
A&WHbt (A)	1	1	1	1
A&WHbt (C)	3	3	3	3
LW	1	1	1	1

Analyte	Fish Consumption					
	All samples			Assessment period		
	Exceedances	n	Percent	Exceedances	n	Percent
Arsenic (T)	0	1	0.0%	0	1	0.0%
Mercury (T)	0	1	0.0%	0	1	0.0%
Selenium (T)	1	1	100.0%	1	1	100.0%
Thallium (T)	0	1	0.0%	0	1	0.0%

Analyte	Secondary Human Contact					
	All samples			Assessment period		
	Exceedances	n	Percent	Exceedances	n	Percent
Lead (T)	0	1	0.0%	0	1	0.0%

Analyte	Aquatic and Wildlife Habitat (Chronic)					
	All samples			Assessment period		
	Exceedances	n	Percent	Exceedances	n	Percent
Aluminum (T)	1	1	100.0%	1	1	100.0%
Copper (D)	0	1	0.0%	0	1	0.0%
Cyanide (T)	0	1	0.0%	0	1	0.0%
Lead (D)	0	1	0.0%	0	1	0.0%
Mercury (T)	1	1	100.0%	1	1	100.0%
Selenium (T)	1	1	100.0%	1	1	100.0%

Analyte	Livestock Watering					
	All samples			Assessment period		
	Exceedances	n	Percent	Exceedances	n	Percent
Cyanide (T)	0	1	0.0%	0	1	0.0%
Gross alpha (Adj)	0	1	0.0%	0	1	0.0%
Lead (T)	0	1	0.0%	0	1	0.0%
Selenium (T)	1	1	100.0%	1	1	100.0%

- **Was the minimum number of samples to determine designated use support obtained during the assessment period? No.**
- **Category of Designated Use Support: Category 3 – There is insufficient data to determine if any designated use is supported.**
- **Recommendation is to use data obtained at this site to understand geographic distribution of listed analytes in the watershed.**

Site 10COVETRIB29

Site	Alias	Location
10COVETRIB29	10-29	Cove Wash tributary

Total		Assessment period	
Year(s) sampled	# of Sample Events	Year(s) sampled*	# of Sample Events*
2011-2012	5	2011-2012	5

*Note that not all analytes were necessarily sampled each sample event.

Designated Use	All samples		Assessment period	
	Total number of exceedances	Total analytes exceeded	Total number of exceedances	Total analytes exceeded
FC	0	0	0	0
ScHC	0	0	0	0
A&WHbt (A)	2	1	2	1
A&WHbt (C)	5	2	5	2
LW	0	0	0	0

Analyte	Fish Consumption					
	All samples			Assessment period		
	Exceedances	n	Percent	Exceedances	n	Percent
Arsenic (T)	0	5	0.0%	0	5	0.0%
Mercury (T)	0	5	0.0%	0	5	0.0%
Selenium (T)	0	5	0.0%	0	5	0.0%
Thallium (T)	0	5	0.0%	0	5	0.0%

Analyte	Secondary Human Contact					
	All samples			Assessment period		
	Exceedances	n	Percent	Exceedances	n	Percent
Lead (T)	0	5	0.0%	0	5	0.0%

Analyte	Aquatic and Wildlife Habitat (Acute)					
	All samples			Assessment period		
	Exceedances	n	Percent	Exceedances	n	Percent
Aluminum (T)	2	5	40.0%	2	5	40.0%
Copper (D)	0	5	0.0%	0	5	0.0%
Mercury (T)	0	5	0.0%	0	5	0.0%
Selenium (T)	0	5	0.0%	0	5	0.0%

Analyte	Aquatic and Wildlife Habitat (Chronic)					
	All samples			Assessment period		
	Exceedances	n	Percent	Exceedances	n	Percent
Aluminum (T)	3	5	60.0%	3	5	60.0%
Copper (D)	0	5	0.0%	0	5	0.0%
Cyanide (T)	0	5	0.0%	0	5	0.0%
Lead (D)	0	5	0.0%	0	5	0.0%
Mercury (T)	2	5	40.0%	2	5	40.0%
Selenium (T)	0	5	0.0%	0	5	0.0%

Analyte	Livestock Watering					
	All samples			Assessment period		
	Exceedances	n	Percent	Exceedances	n	Percent
Cyanide (T)	0	5	0.0%	0	5	0.0%
Gross alpha (Adj)	0	5	0.0%	0	5	0.0%
Lead (T)	0	5	0.0%	0	5	0.0%
Selenium (T)	0	5	0.0%	0	5	0.0%

- **Was the minimum number of samples to determine designated use support obtained during the assessment period? Yes.**
- **Category of Designated Use Support: Category 5b – At least one designated use is not supported and a review of the designated use and/or water quality standards will be conducted to determine if appropriate for the surface water body.**
- **Category 5b is specific to only the analytes listed above with 2 or more exceedances during the assessment period for the individual designated use. For analytes with 1 or less exceedances during the assessment period the designated use is supported for those analytes. (Note that not all analytes with 0 exceedances are listed in these tables but are contained in the complete analytical data set.)**
- **Additional Cove Wash surface water quality assessment information may be found in the March 14, 2014 NNEPA WQP document entitled: "Cove Wash Watershed - Surface Water Quality Assessment Report".**

Site 10SANJUANR30

Site	Alias	Location
10SANJUANR30	10-30	San Juan River

Total		Assessment period	
Year(s) sampled	# of Sample Events	Year(s) sampled*	# of Sample Events*
2011	3	2011	3

*Note that not all analytes were necessarily sampled each sample event.

Designated Use	All samples		Assessment period	
	Total number of exceedances	Total analytes exceeded	Total number of exceedances	Total analytes exceeded
Dom	1	1	1	1
FC	0	0	0	0
PrHC	1	1	1	1
ScHC	1	1	1	1
A&WHbt (A)	2	1	2	1
A&WHbt (C)	6	2	6	2
AgWS	0	0	0	0
LW	0	0	0	0

Analyte	Domestic Water Supply					
	All samples			Assessment period		
	Exceedances	n	Percent	Exceedances	n	Percent
Arsenic (T)	0	3	0.0%	0	3	0.0%
Barium (T)	0	3	0.0%	0	3	0.0%
Beryllium (T)	0	3	0.0%	0	3	0.0%
Chromium (T)	0	3	0.0%	0	3	0.0%
Gross alpha (Adj)	0	3	0.0%	0	3	0.0%
Lead (T)	1	3	33.3%	1	3	33.3%

Analyte	Fish Consumption					
	All samples			Assessment period		
	Exceedances	n	Percent	Exceedances	n	Percent
Arsenic (T)	0	3	0.0%	0	3	0.0%
Mercury (T)	0	3	0.0%	0	3	0.0%
Selenium (T)	0	3	0.0%	0	3	0.0%
Thallium (T)	0	3	0.0%	0	3	0.0%

Analyte	Primary Human Contact					
	All samples			Assessment period		
	Exceedances	n	Percent	Exceedances	n	Percent
Lead (T)	1	3	33.3%	1	3	33.3%

Analyte	Secondary Human Contact					
	All samples			Assessment period		
	Exceedances	n	Percent	Exceedances	n	Percent
Lead (T)	1	3	33.3%	1	3	33.3%

Analyte	Aquatic and Wildlife Habitat (Acute)					
	All samples			Assessment period		
	Exceedances	n	Percent	Exceedances	n	Percent
Aluminum (T)	2	3	66.7%	2	3	66.7%
Copper (D)	0	3	0.0%	0	3	0.0%
Mercury (T)	0	3	0.0%	0	3	0.0%
Selenium (T)	0	3	0.0%	0	3	0.0%

Analyte	Aquatic and Wildlife Habitat (Chronic)					
	All samples			Assessment period		
	Exceedances	n	Percent	Exceedances	n	Percent
Aluminum (T)	3	3	100.0%	3	3	100.0%
Copper (D)	0	3	0.0%	0	3	0.0%
Cyanide (T)	0	3	0.0%	0	3	0.0%
Lead (D)	0	3	0.0%	0	3	0.0%
Mercury (T)	3	3	100.0%	3	3	100.0%
Selenium (T)	0	3	0.0%	0	3	0.0%

Analyte	Agricultural Water Supply					
	All samples			Assessment period		
	Exceedances	n	Percent	Exceedances	n	Percent
Selenium (T)	0	3	0.0%	0	3	0.0%

Analyte	Livestock Watering					
	All samples			Assessment period		
	Exceedances	n	Percent	Exceedances	n	Percent
Cyanide (T)	0	3	0.0%	0	3	0.0%
Gross alpha (Adj)	0	3	0.0%	0	3	0.0%
Lead (T)	0	3	0.0%	0	3	0.0%
Selenium (T)	0	3	0.0%	0	3	0.0%

- Was the minimum number of samples to determine designated use support obtained during the assessment period? No.
- Category of Designated Use Support: Category 3 – There is insufficient data to determine if any designated use is supported.
- Recommendation is to use data obtained at this site to understand geographic distribution of listed analytes in the watershed.

Site 10SANJUANR31



Site	Alias	Location
10SANJUANR31	10-31	San Juan River

Total		Assessment period	
Year(s) sampled	# of Sample Events	Year(s) sampled*	# of Sample Events*
2011	3	2011	3

*Note that not all analytes were necessarily sampled each sample event.

Designated Use	All samples		Assessment period	
	Total number of exceedances	Total analytes exceeded	Total number of exceedances	Total analytes exceeded
Dom	0	0	0	0
FC	0	0	0	0
PrHC	0	0	0	0
ScHC	0	0	0	0
A&WHbt (A)	2	1	2	1
A&WHbt (C)	6	2	6	2
AgWS	0	0	0	0
LW	0	0	0	0

Analyte	Domestic Water Supply					
	All samples			Assessment period		
	Exceedances	n	Percent	Exceedances	n	Percent
Arsenic (T)	0	3	0.0%	0	3	0.0%
Barium (T)	0	3	0.0%	0	3	0.0%
Beryllium (T)	0	3	0.0%	0	3	0.0%
Chromium (T)	0	3	0.0%	0	3	0.0%
Gross alpha (Adj)	0	3	0.0%	0	3	0.0%
Lead (T)	0	3	0.0%	0	3	0.0%

Analyte	Fish Consumption					
	All samples			Assessment period		
	Exceedances	n	Percent	Exceedances	n	Percent
Arsenic (T)	0	3	0.0%	0	3	0.0%
Mercury (T)	0	3	0.0%	0	3	0.0%
Selenium (T)	0	3	0.0%	0	3	0.0%
Thallium (T)	0	3	0.0%	0	3	0.0%

Analyte	Primary Human Contact					
	All samples			Assessment period		
	Exceedances	n	Percent	Exceedances	n	Percent
Lead (T)	0	3	0.0%	0	3	0.0%

Analyte	Secondary Human Contact					
	All samples			Assessment period		
	Exceedances	n	Percent	Exceedances	n	Percent
Lead (T)	0	3	0.0%	0	3	0.0%

Analyte	Aquatic and Wildlife Habitat (Acute)					
	All samples			Assessment period		
	Exceedances	n	Percent	Exceedances	n	Percent
Aluminum (T)	2	3	66.7%	2	3	66.7%
Copper (D)	0	3	0.0%	0	3	0.0%
Mercury (T)	0	3	0.0%	0	3	0.0%
Selenium (T)	0	3	0.0%	0	3	0.0%

Analyte	Aquatic and Wildlife Habitat (Chronic)					
	All samples			Assessment period		
	Exceedances	n	Percent	Exceedances	n	Percent
Aluminum (T)	3	3	100.0%	3	3	100.0%
Copper (D)	0	3	0.0%	0	3	0.0%
Cyanide (T)	0	3	0.0%	0	3	0.0%
Lead (D)	0	3	0.0%	0	3	0.0%
Mercury (T)	3	3	100.0%	3	3	100.0%
Selenium (T)	0	3	0.0%	0	3	0.0%

Analyte	Agricultural Water Supply					
	All samples			Assessment period		
	Exceedances	n	Percent	Exceedances	n	Percent
Selenium (T)	0	3	0.0%	0	3	0.0%

Analyte	Livestock Watering					
	All samples			Assessment period		
	Exceedances	n	Percent	Exceedances	n	Percent
Cyanide (T)	0	3	0.0%	0	3	0.0%
Gross alpha (Adj)	0	3	0.0%	0	3	0.0%
Lead (T)	0	3	0.0%	0	3	0.0%
Selenium (T)	0	3	0.0%	0	3	0.0%

- **Was the minimum number of samples to determine designated use support obtained during the assessment period? No.**
- **Category of Designated Use Support: Category 3 – There is insufficient data to determine if any designated use is supported.**
- **Recommendation is to use data obtained at this site to understand geographic distribution of listed analytes in the watershed.**

5.0 References

United States Government Printing Office (USGPO). March 1988. The Clean Water Act As Amended By The Water Quality Act Of 1987 Public Law 100-4.

NNEPA. July 23, 1999. Navajo Nation Clean Water Act.

NNEPA. November 9, 1999. Navajo Nation Water Quality Standards.

NNEPA. May 13, 2008. Navajo Nation Surface Water Quality Standards 2007

NNEPA. 2015. Draft - 2015 Navajo Nation Surface Water Quality Standards.

United States Geological Survey. 2013. National Hydrography Dataset.