



## San Diego, CA and vicinity

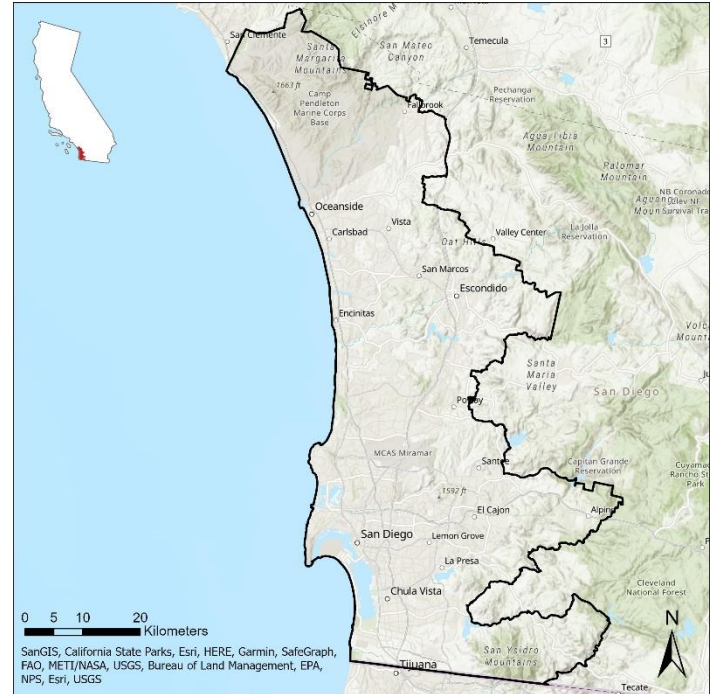
Towns and cities rely on clean air, clean water, green space, and other natural amenities for economic sustainability and quality of life, yet their benefits are not always fully understood or considered in local decisions. EPA and its partners are producing EnviroAtlas to help communities better use environmental assets for public good.

EnviroAtlas includes an online interactive mapping application that anyone can use. The interactive map contains over 500 maps available for the U.S., as well as fine-scale maps for selected U.S. communities about existing and potential benefits from the local natural environment. Data for these featured communities is based on 1-meter resolution land cover data. Information derived from these data is summarized by census block groups; more spatially explicit map layers are also provided. This fact sheet highlights some of the many community data layers available for the San Diego featured area.

### Background

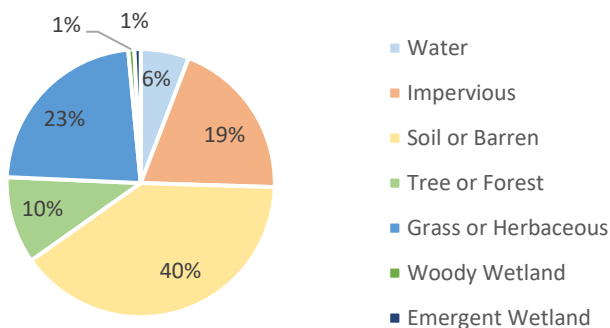
The EnviroAtlas community boundary stretches along the entire coastline of San Diego County. In addition to San Diego, it includes the cities of Chula Vista, Escondido, Oceanside, and Camp Pendleton. The area measures 3,559 square kilometers and encompasses 1,735 census block groups.

The climate ranges from a Mediterranean climate in the north to a semi-arid steppe climate in south. Coastal San Diego experiences warm, dry summers and mild winters.



Most of this region hosts coastal sage scrub, giving way to chaparral further inland. Native vegetation is drought resistant and prone to fires. The pleasant climate and more than 70 miles of coastline support a thriving tourism industry, one driver of the local economy. Area demographics indicate potential for income and other disparities in the distribution of environmental assets. EnviroAtlas includes demographic maps that can help screen for potential disparities in health and well-being that result from disproportionate distribution of urban natural features.

Percent Land Cover in Community Area



San Diego Area Demographics  
2010 Census

Total population	2,994,514
Under 13 years old	16.7%
Over 70 years of age	8.0%
Other than white/non-Hispanic	52.1%
Below twice the U.S. poverty level	30.0%

## Ecosystem Services Overview

In EnviroAtlas, the benefits humans receive from nature are grouped into seven categories that demonstrate the interconnectedness of these ecosystem services:

- Clean air
- Clean and plentiful water
- Natural hazard mitigation
- Climate stabilization
- Recreation, culture, and aesthetics
- Biodiversity conservation
- Food, fuel, and materials (data available only for communities with farmland)

Some examples of data included in EnviroAtlas for San Diego are detailed below:

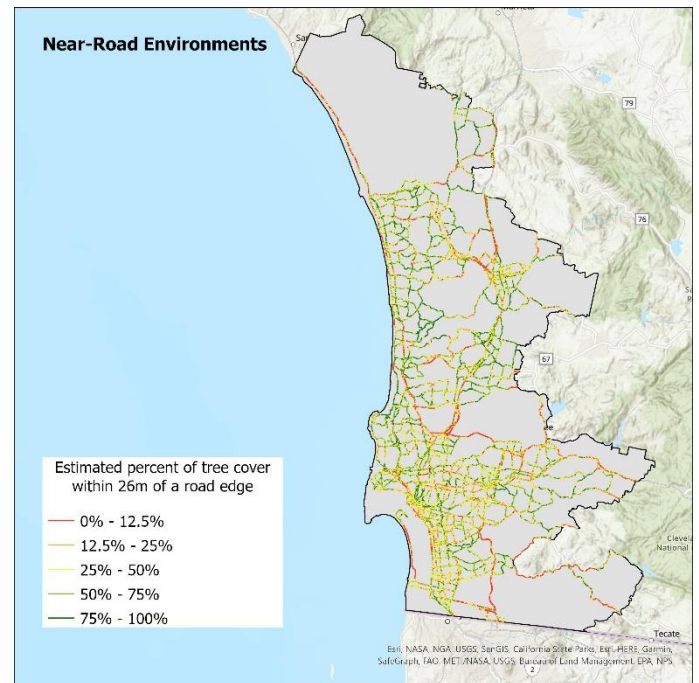
### Near-Road Environments

Studies indicate that trees' capacity to filter and deflect airflow may reduce health impacts of vehicular pollution on nearby populations. In EnviroAtlas, you can find detailed maps of tree coverage along both high-speed and walkable roads. In the San Diego community area:

- An estimated 60 percent of the population lives within 300 meters of a high-speed roadway. This distance is within the zone of air pollutant drift from unobstructed roadways.
- For 80 percent of the estimated population living within this 300-meter zone, nearby high-speed roads have less than 25% adjacent tree cover.
- Depending on local factors, specific areas may benefit from vegetative or other physical barriers to reduce vehicular air pollutant drift.

## EnviroAtlas Tools and Features

- Learn more about EnviroAtlas data: <https://www.epa.gov/enviroatlas/enviroatlas-data>
- Search our data layers and access their fact sheets: <https://www.epa.gov/enviroatlas/enviroatlas-dynamic-data-matrix>
- Explore data for the San Diego community area in our interactive mapping application: <https://www.epa.gov/enviroatlas/forms/enviroatlas-data-download>
- Use our Eco-Health Relationship Browser to explore ecosystems, the services they provide, and their benefits to human health and well-being: <https://www.epa.gov/enviroatlas/enviroatlas-eco-health-relationship-browser>
- Contact us with questions about EnviroAtlas: <https://www.epa.gov/enviroatlas/forms/contact-enviroatlas>



### Stream and Lake Buffers

Natural land cover adjacent to streams and rivers, sometimes called the riparian area or zone, helps protect water quality and supply for drinking, recreation, and aquatic habitat. Using the 1-meter land cover, EnviroAtlas provides land cover composition analysis for stream and lake buffers with widths of 15 and 50 meters.

- An estimated 23 percent of San Diego's land area is within 50 meters of a stream or lake.
- 36 percent of San Diego's 50-meter stream and lake buffers contain less than 20 percent vegetative cover.

EnviroAtlas combines maps, graphs, and other analysis tools, fact sheets, and downloadable data into an easy-to-use, web-based educational and decision-support tool. EnviroAtlas helps users understand the connections between the benefits we derive from ecosystem services and the natural resources that provide them. For more information, please visit [www.epa.gov/enviroatlas](http://www.epa.gov/enviroatlas).