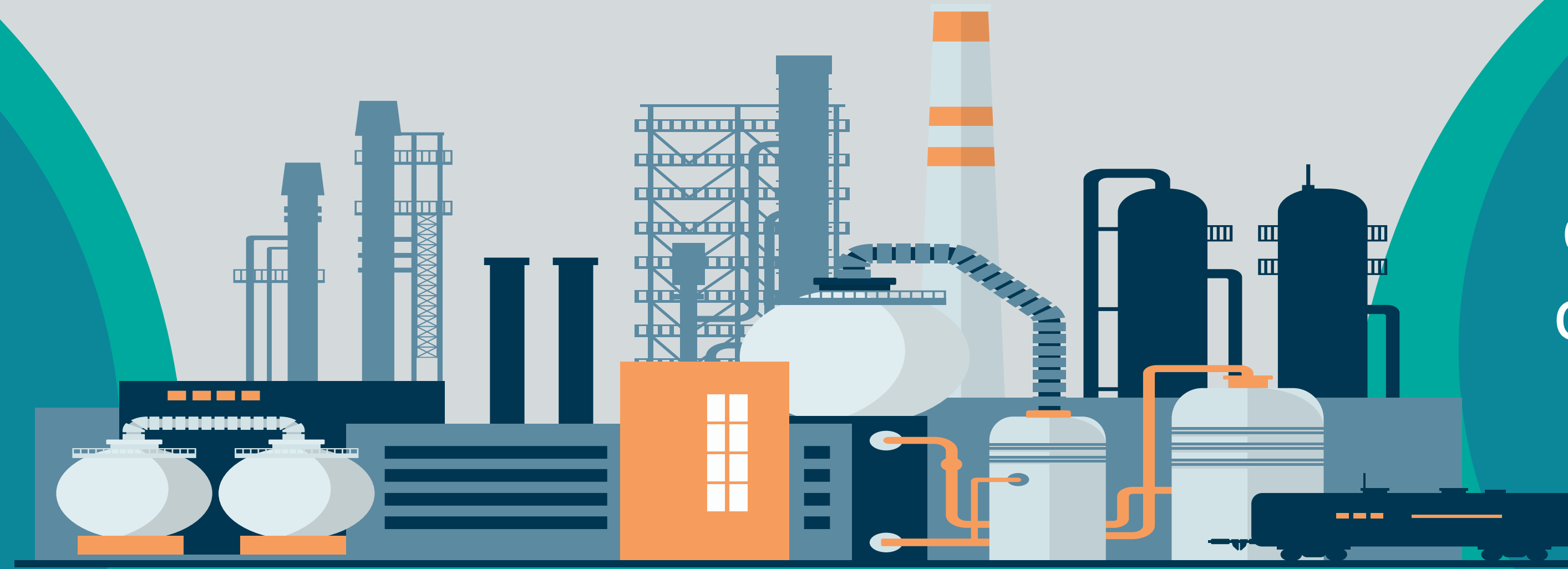




# EPA's Air Toxics Rules for the Synthetic Organic Chemical Manufacturing and Polymers & Resins Industries

EPA's air toxics rules regulate processes and pieces of equipment called "sources."

This rule covers **about 200 chemical plants** across the U.S. Some plants are subject to multiple rules.



The rule will cut over **6,200 tons** of total air toxics emissions a year.

It will reduce **EtO and chloroprene emissions from covered sources by 80%**, dramatically reducing cancer risk from lifetime air toxics exposure.

# EPA's Air Toxics Rules for the Synthetic Organic Chemical Manufacturing and Polymers & Resins Industries

Air toxics reductions will come from processes and equipment like:

Heat Exchange Systems

Flares

Process Vents



# EPA's Air Toxics Rules for the Synthetic Organic Chemical Manufacturing and Polymers & Resins Industries

Fenceline monitoring will help ensure facilities are effectively controlling these six key air toxics:

