



---

# EPA Oversees Off-Site Investigation

---

## Former Delco Chassis Facility

Livonia, Michigan

May 2024

---

### For more information

For questions, comments or more information contact these EPA team members:

#### Francisco Arcaute

U.S. EPA Community  
Involvement Coordinator  
312-886-7613  
[arcaute.francisco@epa.gov](mailto:arcaute.francisco@epa.gov)

#### Jennifer Stanhope

U.S. EPA Project Manager  
312-886-0681  
[stanhope.jennifer@epa.gov](mailto:stanhope.jennifer@epa.gov)

### Information repository:

Official documents are available for your review at:

U.S. EPA Records Center  
Seventh Floor,  
77 W. Jackson Blvd  
Chicago, IL

### On the web:

Former Delco Chassis Facility  
Corrective Action website at:  
<https://www.epa.gov/hwcorrectiveactioncleanups/epa-rcra-id-mid005356621>

**The public drinking water supply that provides water to your home has not been impacted by this contamination. If you have questions at any step of the process, please contact the EPA team members listed above.**

U.S. Environmental Protection Agency (EPA) and the Revitalizing Auto Communities Environmental Response Trust (RACER) are investigating environmental impacts related to industrial activities at the Former Delco Chassis facility in Livonia, Michigan. The upcoming study will determine whether the chemicals have migrated further from the facility in groundwater than previously measured, and will check for a pollution problem called vapor intrusion. Vapor intrusion occurs when contamination in the groundwater or soil gives off gases that can rise through the soil and enter buildings through foundation cracks and holes, and can possibly affect indoor air quality. Groundwater is an environmental term for underground water and soil gas is a term for underground air. A family of chemicals called volatile organic compounds, or VOCs, is especially prone to vapor intrusion because those chemicals evaporate quickly into the air. This study will focus on the VOC trichloroethene, or TCE.

Under an agreement with the EPA, RACER has collected soil, groundwater, and soil gas samples related to the facility's prior use of VOC solvents. Soil gas samples are used to find vapor intrusion problems. Soil gas or vapor testing is performed by digging probes into the ground or under building foundations to test for VOC vapors trapped between soil particles. Samples collected under buildings are called "sub-slab samples."

### What is the purpose of the investigation?

Under the federal Resource Conservation and Recovery Act, or RCRA, EPA requires facilities to demonstrate that chemicals used at these sites are not a health risk to the community. If a release occurs, EPA has the authority under the RCRA law to require the facility to address the contamination. Groundwater sampling shows contamination from the former Delco Chassis facility has moved off the property and beneath nearby residential areas. RACER collected soil gas samples to determine whether the groundwater is producing vapors that could potentially evaporate into indoor spaces. Groundwater and soil gas testing results show that the potential for vapor intrusion exists, so RACER needs to collect additional information about conditions in the residential area.

*(continued on back)*

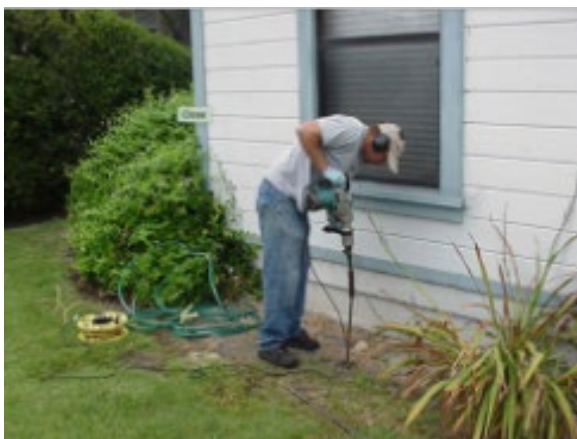
## What is the purpose of the investigation? *(continued)*

RACER will collect groundwater and soil gas samples to determine the location of the contamination under the ground. The sampling details are described in a work plan that was reviewed and approved by the EPA. You can read the work plan on the EPA's website, which is listed on the front page of this Fact Sheet.

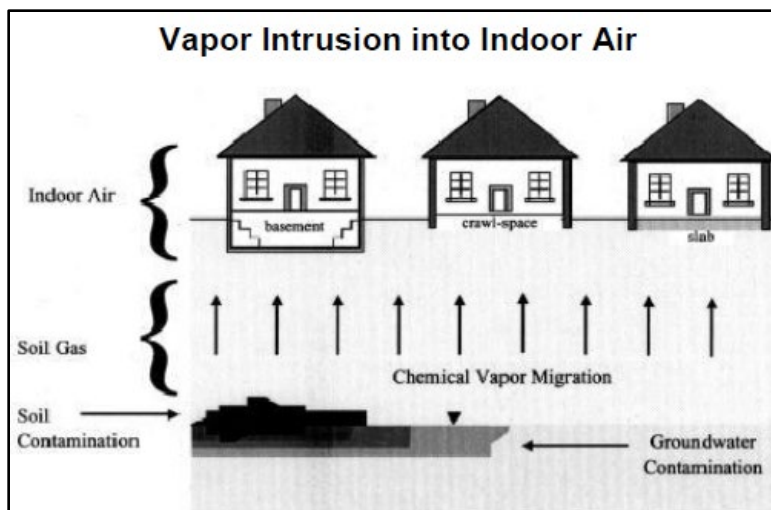
There are many factors involved with vapor intrusion, such as the type of soil, groundwater flow, and building structure. Sampling is not planned near every home at this time. If you observe RACER collecting samples near your home, it does not mean vapor intrusion is occurring in your house. However, to be certain that no health risk exists, RACER needs to collect samples.



*Summa canister collecting a sample.*



*Preparing to collect a soil vapor sample.*



*This diagram shows how vapors can rise up through the soil and into your home.*

## How are samples collected?

RACER will collect some of the samples using handheld drills to create holes in the ground to place the samplers. Other samples will be collected using trucks with drilling equipment. You may also see metal canisters called "Summa canisters" that are used to pull vapors from the ground to collect a sample. Examples of some of the types of equipment you may see during the sampling are shown in the photos on this fact sheet.

## Next Steps

RACER plans to collect the samples during June 2024. The sample results will be compared to agency health standards, and RACER and the EPA will determine the next steps based on this comparison. After RACER and the EPA evaluate the results, we will hold a meeting to discuss the results with residents (tentatively planned for August 2024). RACER will address any potential vapor intrusion concerns that are identified during the study.



*Groundwater sample collection.*