

# SEEKING INPUT: DEVELOPING CLIMATE CHANGE AND ENVIRONMENTAL JUSTICE DATA AND PUBLIC PILOT TOOL FOR U.S. PACIFIC TERRITORIES

## BACKGROUND

The U.S. Pacific Territories (PT) include Guam, the Commonwealth of the Northern Mariana Islands, and American Samoa. These territories face unique challenges relating to climate change and environmental justice, and they also lack public-facing GIS-based tools that the EPA has developed for much of the rest of the United States (through websites such as [EnviroAtlas](https://www.epa.gov/enviroatlas)<sup>1</sup> and [EJScreen](https://www.epa.gov/ejscreen)<sup>2</sup>). EPA partners in PT communities have requested that these tools and datasets be expanded to cover their regions.

## APPROACH

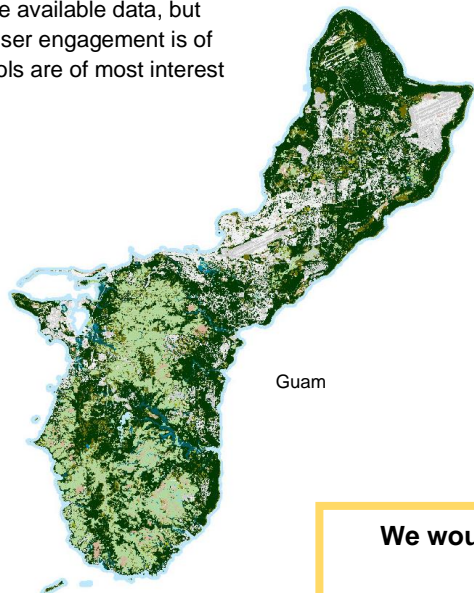
This project will identify and create environmental and public health geospatial datasets (i.e., maps) that can be implemented in existing user-friendly tools (such as EJScreen or EnviroAtlas) for use by interested parties not only to visualize and analyze available data, but also to support environmental decision-making. User engagement is of high priority in determining which datasets and tools are of most interest for these communities

## RESULTS

The resulting tools will aid PT communities in environmental and public health decision making and planning. Users will be able to visualize potential environmental, climate, and health impacts and solutions. This project will support EPA Region 9 in decision-making processes and will benefit PT communities in responding to environmental justice impacts.



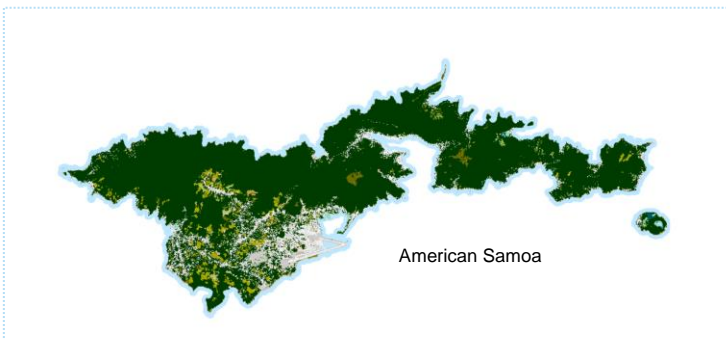
CNMI



Guam

### Landcover Class

- Impervious Surface
- Developed Open Space
- Cultivated
- Pasture/Hay
- Grassland
- Evergreen Forest
- Scrub/Shrub
- Palustrine Forested Wetland
- Palustrine Scrub/Shrub Wetland
- Palustrine Emergent Wetland
- Estuarine Forested Wetland
- Estuarine Scrub/Shrub Wetland
- Estuarine Emergent Wetland
- Unconsolidated Shore
- Bare Land
- Water
- Palustrine Aquatic Bed



American Samoa

### We would love to hear from you!

We are seeking input about what data would be most helpful to stakeholders, decision-makers, and communities in the Pacific Territories.

To contribute comments or ask questions, please email [blakely.valerie@epa.gov](mailto:blakely.valerie@epa.gov)

<sup>1</sup> <https://www.epa.gov/enviroatlas>  
<sup>2</sup> <https://www.epa.gov/ejscreen>