

Overview of Nitrogen Dioxide (NO₂) Air Quality in the United States

Updated: August 9, 2024

1. Introduction

The overall purpose of this document is to maintain an up-to-date graphical summary of air quality information that supports the review of the National Ambient Air Quality Standards (NAAQS) for oxides of nitrogen, hereafter referred to as the nitrogen dioxide (NO₂) NAAQS. In previous reviews of the NO₂ NAAQS, this type of information has generally been included in atmospheric sections of the Integrated Science Assessment (ISA) and Policy Assessment (PA) for Oxides of Nitrogen. This stand-alone document will either replace or complement the air quality emissions and monitoring data in the atmospheric sections of future NO₂ NAAQS review supporting documents and will be updated at regular intervals as new data becomes available.

The content of past NAAQS documents' atmospheric sections has included major sections on emissions and concentration trends utilizing maps and data from the Environmental Protection Agency's (EPA's) National Emissions Inventory (NEI) and the EPA's Air Quality System (AQS) database. In past NAAQS reviews, this often involved adaptation of figures and tables prepared for other reports or development of new figures and tables using data analysis and mapping software. Additionally, the release of updated emission inventories and ambient air monitoring data may not coincide with the schedule for the development of NAAQS review supporting documents. As a result, data access and resources can limit the availability of the most recent information for inclusion in NAAQS review supporting documents.

This stand-alone document allows the content to be updated as soon as new data becomes available, rather than relying on information that is available at the time of development of the NAAQS review supporting documents. It also ensures that the public will have access to a consistent set of maps and figures for each NAAQS pollutant that are updated on a routine basis, rather than separated by several years because of the disparate schedules of the various NAAQS reviews for each pollutant. Moreover, a stand-alone document can be expanded to include new air quality analyses as they are completed, rather than following the timeline for the public release of the NAAQS review supporting documents. Finally, this document takes advantage of a more flexible digital format for the routinely prepared maps and trends figures with an end product that more strongly emphasizes visual presentation of data and reduces the amount of text, while also creating a more interactive presentation of the information through the use of external links.

This document follows an organizational structure similar to that of the atmospheric sections of past NO₂ NAAQS review supporting documents. The subsequent sections are as follows: 2. Atmospheric Chemistry; 3. Sources and Emissions of NO_x; 4. Ambient Air Monitoring Requirements and Monitoring Networks; 5. Data Handling Conventions and Computations for Determining Whether the Standards are Met; and 6. NO₂ Concentrations Measured at Ambient Air Monitoring Sites Across the U.S. These sections are broad enough in scope to communicate relevant information about NO₂ air quality, including scientific advances, but specific enough that the information needed to develop NAAQS review supporting documents can be quickly and readily retrieved.

2. Atmospheric Chemistry

This document generally focuses on NO₂, as it is the current NAAQS indicator for oxides of nitrogen and the most relevant to health effects. Ambient concentrations of NO₂ are influenced by both direct NO₂ emissions and by emissions of nitric oxide (NO), with the subsequent conversion of NO to NO₂ primarily through reaction with ozone (O₃). The initial reaction between NO and O₃ to form NO₂ occurs fairly quickly during the daytime, with reaction times on the order of minutes. However, NO₂ can also be photolyzed to reform NO, creating new O₃ in the process. A large number of oxidized nitrogen species in the atmosphere are formed from the oxidation of NO and NO₂. These include nitrate radicals (NO₃), nitrous acid (HONO), nitric acid (HNO₃), dinitrogen pentoxide (N₂O₅), nitryl chloride (ClNO₂), peroxyxynitric acid (HNO₄), peroxyacetyl nitrate and its homologues (PANs), other organic nitrates, such as alkyl nitrates (including isoprene nitrates), and pNO₃. The sum of these reactive oxidation products (collectively referred to as NO_z) and NO plus NO₂ (collectively referred to as NO_x) comprise NO_y.

Due to the close relationship between NO and NO₂, and their ready interconversion, these species are often grouped together and referred to as NO_x. The majority of NO_x emissions are in the form of NO. For example, 90% or more of tail-pipe NO_x emissions are in the form of NO, with only about 2 to 10% emitted as NO₂. As noted above, NO_x emissions require time and sufficient O₃ concentrations for the conversion of NO to NO₂. Higher temperatures and concentrations of reactants result in shorter conversion times (e.g., less than one minute under some conditions), while dispersion and depletion of reactants results in longer conversion times. The time required to transport emissions away from a roadway can vary from less than one minute (e.g., under open conditions) to about one hour (e.g., for certain urban street canyons). These factors can affect the locations where the highest NO₂ concentrations occur. In particular, while ambient NO₂ concentrations are often elevated near important sources of NO_x emissions, such as major roadways, the highest measured ambient concentrations in a given urban area may not always occur immediately adjacent to those sources. Ambient NO₂ concentrations around stationary sources of NO_x emissions are similarly impacted by the availability of O₃ and by meteorological conditions, although surface-level NO₂ concentrations can be less impacted in cases where stationary source NO_x emissions are emitted from locations elevated substantially above ground level.

The near-road environment provides a clear example of the interplay between NO_x emissions, meteorology, and the atmospheric chemistry that impacts ambient NO₂ concentrations. Vehicular emissions tend to peak during the morning and afternoon commutes, while peak O₃ concentrations generally occur in the late morning to early evenings. In addition, atmospheric mixing tends to be the strongest during the daytime, rapidly diluting roadway emissions. Given the relative timing of O₃ availability and peak atmospheric mixing conditions, the highest near-road NO₂ concentrations often occur during the early morning hours (i.e., before atmospheric mixing can rapidly dilute emissions). The conversion of NO_x into the species that make up NO_z typically takes place on a much longer time scale than do interconversions between NO and NO₂. NO_x emitted during morning rush hour by vehicles can be converted almost completely into these products by late afternoon during warm, sunny conditions.

Oxidized nitrogen compounds are ultimately lost from the atmosphere by wet and dry deposition to the Earth's surface. Soluble species are taken up by aqueous aerosols and cloud droplets and are removed by wet deposition by rainout (i.e., incorporation into cloud droplets that eventually coagulate into falling rain drops). Both soluble and insoluble species are removed by washout (i.e., impaction with falling rain drops, another component of wet deposition), and by dry deposition (i.e., impaction with the surface and gas exchange with plants). NO and NO₂ are not very soluble, and therefore wet deposition is not a major removal process for them. However, a major NO_x reservoir species, HNO₃, is extremely soluble, and its deposition (both wet and dry) represents a major sink for NO_y.

3. Sources and Emissions of NO_x

Figure 1 shows the relative contributions of various sources to total U.S. NO_x emissions in 2020. Anthropogenic sources account for a large majority of NO_x emissions in the U.S., with highway vehicles (26%), off-highway vehicles (19%), and stationary fuel combustion (25%) identified as the largest contributors. More specifically, highway vehicles include all on-road vehicles, including light duty as well as heavy duty vehicles, both gasoline- and diesel-powered. Non-road mobile sources include aircraft, commercial marine vessels, locomotives, and non-road equipment. Fuel combustion includes electric generating units (EGUs), which generate electricity from fossil fuels, primarily coal, as well as commercial/institutional, industrial, and residential combustion of biomass, coal, natural gas, oil, and other fuels. Other anthropogenic NO_x sources include agricultural field burning, prescribed fires, and various industrial processes such as cement manufacturing and oil and gas production. Natural sources of NO_x include emissions from plants and soil (biogenics) and wildfires.

The [National Emissions Inventory \(NEI\)](#) is a comprehensive and detailed estimate of air emissions of criteria pollutants, precursors to criteria pollutants, and hazardous air pollutants from air emissions sources. The NEI is released every three years based primarily upon data provided by State, Local, and Tribal air agencies for sources in their jurisdictions and supplemented by data developed by the EPA. The NEI is built using the EPA's Emissions Inventory System (EIS) first to collect the data from State, Local, and Tribal air agencies and then to blend that data with other data sources.

Accuracy in an emissions inventory reflects the extent to which the inventory represents the actual emissions that occurred. Anthropogenic emissions of air pollutants result from a variety of sources such as power plants, industrial sources, motor vehicles and agriculture. The emissions from any individual source typically vary in both time and space. For the thousands of sources that make up the NEI, there is uncertainty in one or both of these factors. For some sources, such as power plants, direct emission measurements enable the emission factors derived from them to be more certain than sources without such direct measurements. However, it is not practically possible to directly monitor each of the emission sources individually and, therefore, emission inventories necessarily contain assumptions, interpolation and extrapolation from a limited set of sample data.

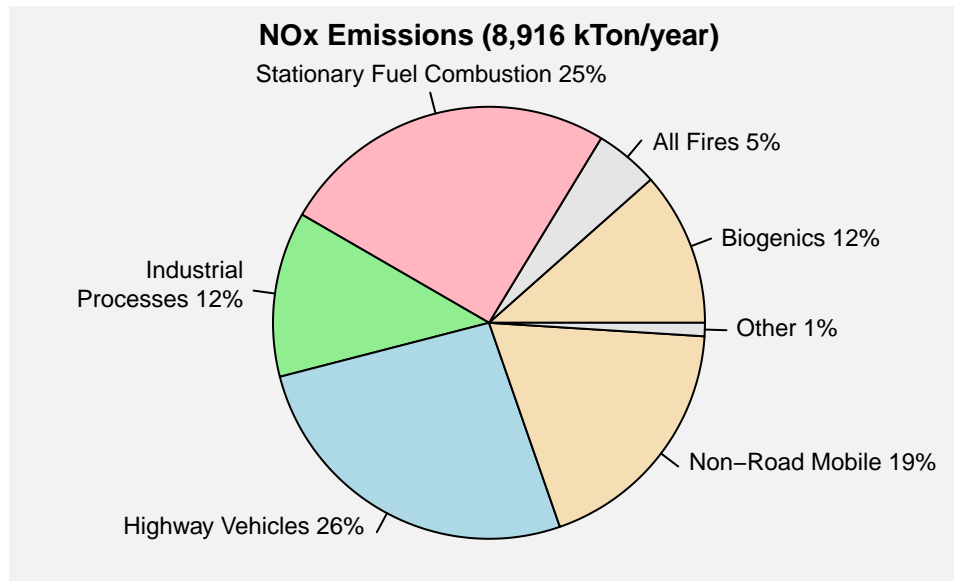


Figure 1. U.S. NO_x emissions by sector. **Source:** 2020 NEI.

Figure 2 below shows the NO_x emissions density in tons/mi²/year for each U.S. county based on the 2020 NEI. The majority of NO_x emissions tend to be located near urban areas, which tend to have the most vehicle traffic and industrial sources. However, there are also some counties in rural areas with higher NO_x emissions due to the presence of large stationary sources such as EGUs or oil and gas extraction.

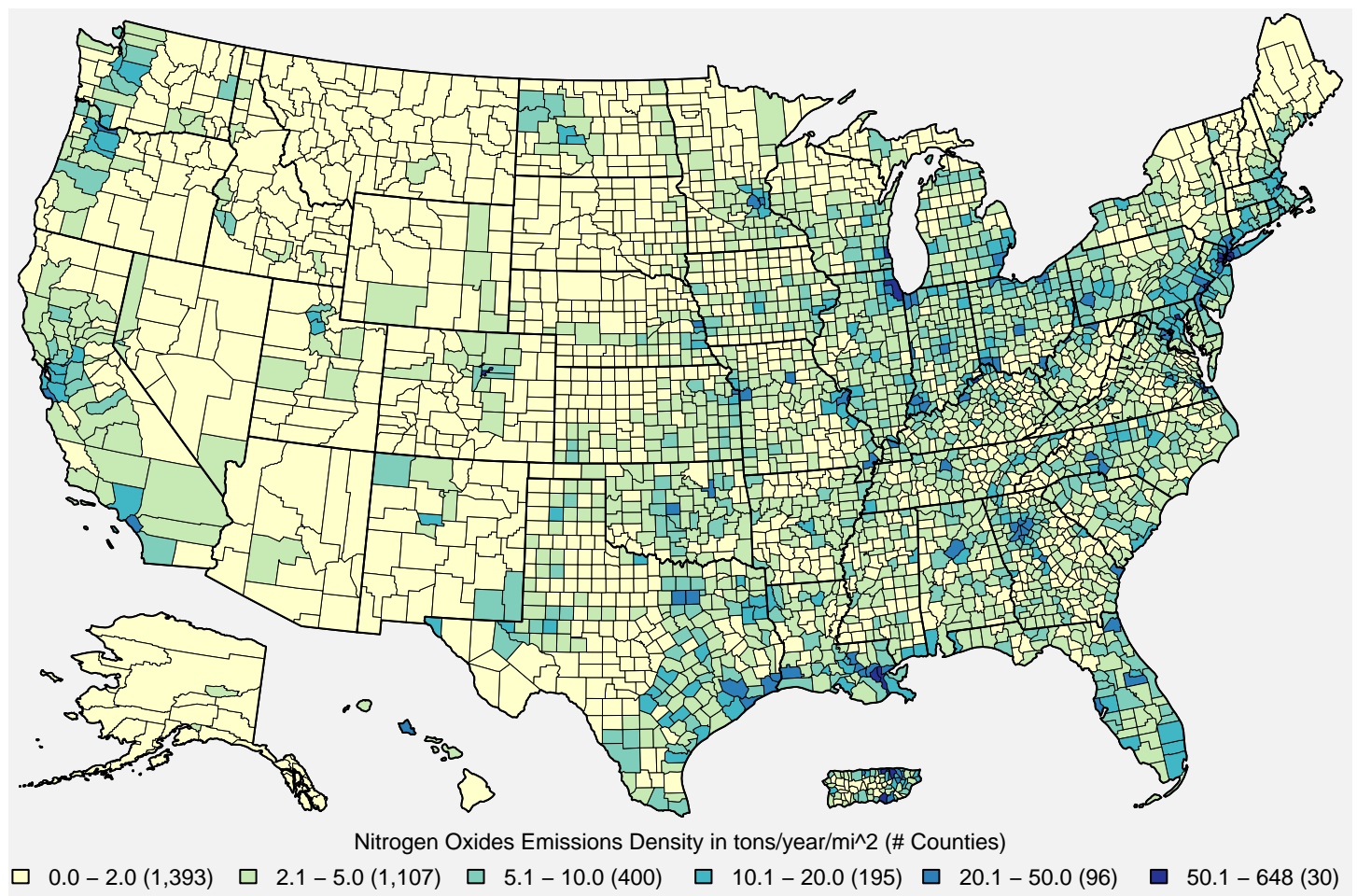


Figure 2. U.S. county-level NO_x emissions density estimates in tons/year/mi². **Source:** 2020 NEI

Figure 3 below shows the national trend in U.S. anthropogenic NO_x emissions from 2002 to 2023.¹ Nationwide estimates indicate a 73% decrease in anthropogenic NO_x emissions from 2002 to 2023 as a result of multiple regulatory programs implemented over the past two decades, including the NO_x SIP Call, the Cross-State Air Pollution Rule (CSAPR), and the Tier 3 Light-duty Vehicle Emissions and Fuel Standards. The overall decrease in NO_x emissions has been driven primarily by decreases from the three largest emissions sectors. Specifically, compared to the 2002 NEI, estimates for 2023 indicate a 87% reduction in NO_x emissions from highway vehicles, a 56% reduction in NO_x emissions from non-road mobile sources, and a 70% reduction in NO_x emissions from stationary fuel combustion.

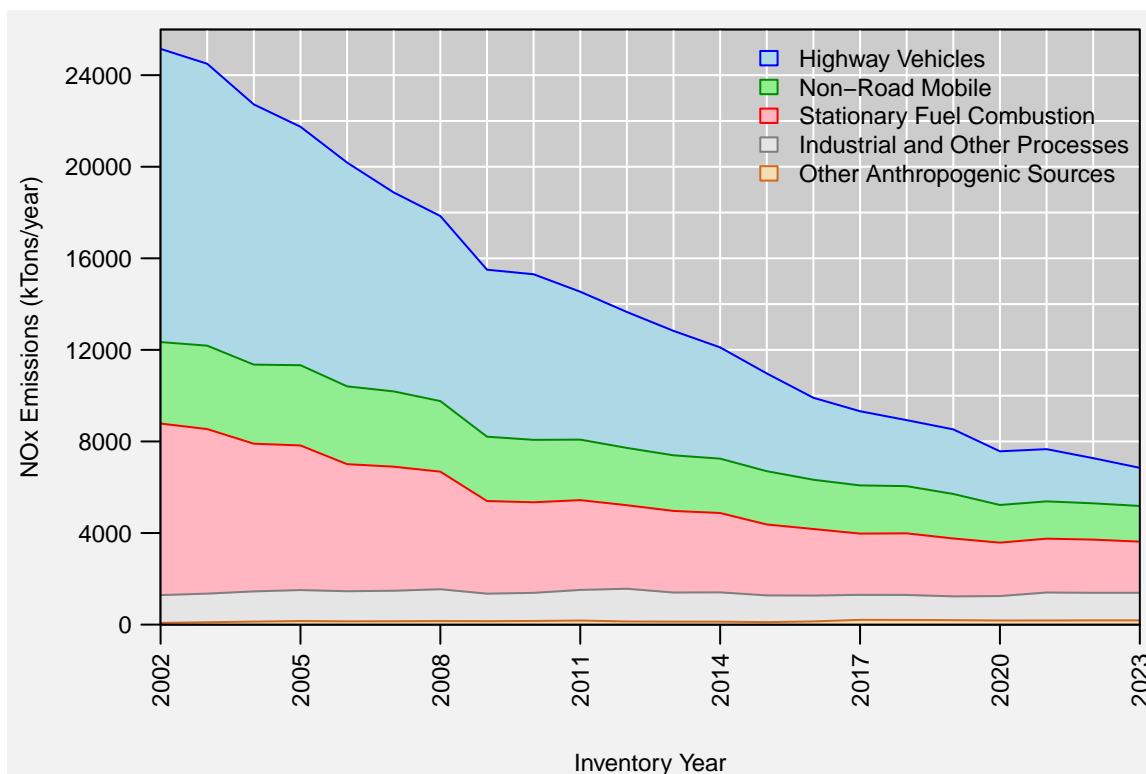


Figure 3. U.S. anthropogenic NO_x emissions trend, 2002-2023. **Source:** EPA’s Air Pollutant Emissions Trends Data

4. Ambient Air Monitoring Requirements and Monitoring Networks

Ambient NO₂ concentrations are measured by monitoring networks operated by State, Local, and Tribal air agencies, which are typically funded in part by the EPA. The EPA provides monitoring requirements for NO₂ and other pollutants in [40 CFR Part 58](#). There were 482 monitoring sites reporting hourly NO₂ concentration data to the EPA during the 2021-2023 period. The locations of these monitoring sites are shown in Figure 4. The main network of monitors providing ambient data for use in implementation activities related to the NAAQS is the State and Local Air Monitoring Stations (SLAMS) network, which comprises over 80% of all NO₂ monitoring sites. This network relies on a chemiluminescent Federal Reference Method (FRM) and on Federal Equivalent Methods (FEM) that use either chemiluminescence or direct measurement methods of NO₂. Data produced by chemiluminescent analyzers include NO, NO₂, and NO_x measurements, which are all routinely reported by State and Local air monitoring agencies.

Two important subsets of SLAMS sites separately make up the [National Core \(NCore\)](#) multi-pollutant monitoring network and the [Photochemical Assessment Monitoring Stations \(PAMS\)](#) network. The NCore network consists of approximately 60 urban monitoring stations and 20 rural monitoring stations, and each State is required to have at least one NCore station. At each NCore site located in a MSA with a population of 1 million or more (based on the most recent census), a PAMS network site is required.² Monitoring sites in the PAMS network are required to measure NO, NO₂, NO_y, and other O₃ precursors during the months of June, July and August, although some precursor monitoring may be required for longer periods of time.

¹Data for Figure 2 come from the EPA’s [Air Pollutant Emissions Trends Data](#). Note that emissions for some sectors are interpolated between inventory years, and the emissions for some sectors are held constant beyond the most recent inventory year (for details, see the “Development of Data” table in the [national emissions trends data file](#). For the purposes of this document, wildfires are considered to be natural emissions and thus are not included in Figure 2.

²The requirements for PAMS, which were most recently updated in 2015, is fully described in section 5 of [Appendix D to 40 CFR Part 58](#).

Another important subset of SLAMS sites is the [near-road monitoring network](#), which was required as part of the 2010 NO₂ NAAQS review and began operating in 2014. Near-road sites are required in each metropolitan statistical area (MSA) with a population of 1,000,000 or greater, and an additional near-road site is required in each MSA with a population of 2,500,000 or greater or with one or more roadway segments that have an average daily traffic volume of 250,000 or more vehicles per day. There were 73 near-road monitors in operation during the 2021-2023 period.

Finally, there are also a number of Special Purpose Monitors (SPMs), which are not required but are often operated by air agencies for short periods of time (i.e., less than 3 years) to collect data for human health and welfare studies, as well as other types of monitoring sites, including monitors operated by tribes and industrial sources. The SPMs are typically not used to assess compliance with the NAAQS.

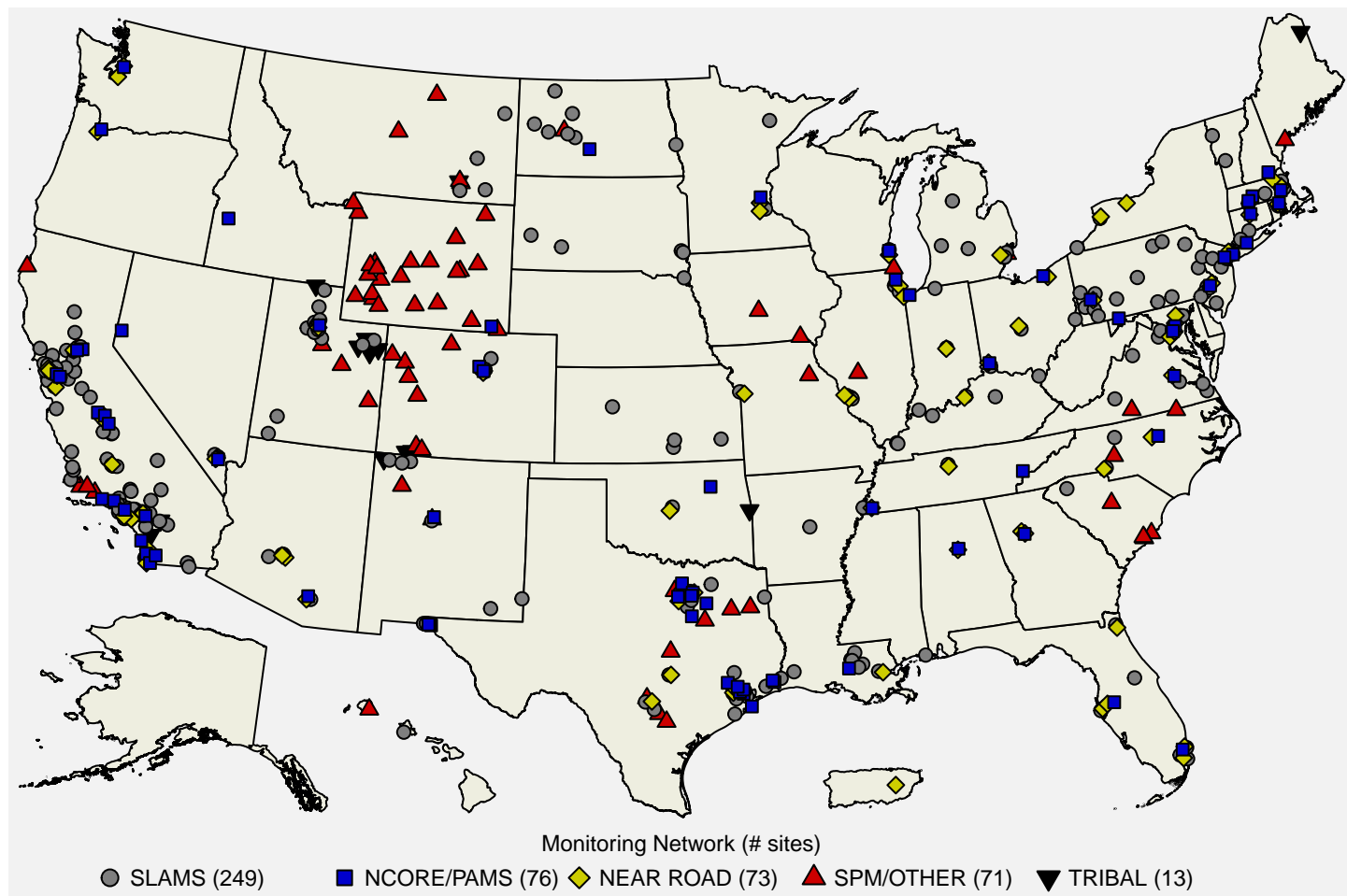


Figure 4: Map of U.S. NO₂ monitoring sites reporting data to the EPA during the 2021-2023 period. **Source:** [AQS](#).

To provide an assessment of data quality, monitoring agencies must perform quality assurance (QA) checks at least once every two weeks to derive estimates of precision and bias for NO₂ and the other gaseous criteria pollutant measurements using calibration gas. For NO₂ monitors, the data quality goal for precision and bias is 15 percent. Ambient air quality data and associated QA data are reported to the EPA via the [Air Quality System \(AQS\)](#).³ Data are reported quarterly and must be submitted to AQS within 90 days after the end of each calendar quarter (i.e. Jan/Feb/Mar, Apr/May/Jun, Jul/Aug/Sep, Oct/Nov/Dec). Additionally, each monitoring agency is required to certify all FRM/FEM data that is submitted to AQS annually, taking into consideration any QA findings, and a data certification letter must be sent to the EPA Regional Administrator by May 1st of the following year.

The traditional chemiluminescence FRM is subject to potential measurement biases resulting from interference by NO_z species. However, within metropolitan areas, where a majority of the NO₂ monitoring network is located, NO₂ concentrations tend to be most heavily influenced by strong local NO_x sources, thus the potential for NO_z related measurement bias is relatively small. There have been recent advances in methods that provide measurements of NO₂ with less potential for interference. These newer methods include photolytic-chemiluminescent methods that rely on photodissociation of NO₂ using specific wavelengths of light, and direct measurements of NO₂, including cavity attenuated phase shift spectrometry

³Quality assurance requirements for monitors used in evaluations of the NAAQS are provided in [Appendix A to 40 CFR Part 58](#). Annual summary reports of precision and bias can be obtained for each monitoring site at the EPA's [Air Data website](#).

and cavity ring-down spectroscopy. It should be noted that the direct NO₂ measurement methods do not provide NO or NO_x measurements. These newer methods are expected to gradually replace the older FRMs as those monitors age.

5. Data Handling Conventions and Computations for Determining Whether the Standards are Met

To assess whether a monitoring site or geographic area (usually a county or urban area) meets or exceeds a NAAQS, the monitoring data are analyzed consistent with the established regulatory requirements for the handling of monitoring data for the purposes of deriving a design value. A design value summarizes ambient air concentrations for an area in terms of the indicator, averaging time and form for a given standard such that its comparison to the level of the standard indicates whether the area meets or exceeds the standard. There are currently two primary NO₂ NAAQS in effect: the annual NAAQS (established in 1971) and the 1-hour NAAQS (established in 2010). The procedures for calculating design values for both NO₂ primary NAAQS are detailed in [Appendix S to 40 CFR Part 50](#) and are summarized below.

Hourly NO₂ measurement data collected at an ambient air monitoring site using FRMs or FEMs, meeting all applicable requirements in [40 CFR Part 58](#) and reported to AQS in parts per billion (ppb) with decimal digits after the first decimal place truncated are used in design value calculations. If multiple monitors collect measurements at the same site, one monitor is designated as the primary monitor. Measurement data collected with the primary monitor are used to calculate the design value and may be supplemented with data from collocated monitors only if (a) the primary monitor did not collect sufficient data to determine a valid design value, or (b) the primary monitor has been discontinued and replaced by another monitor.

The design value for the annual NO₂ NAAQS is simply the mean of all hourly concentration values reported for a single year, rounded to the nearest integer in ppb. The annual design value is considered valid when hourly concentrations are reported for at least 75% of the hours in the year, or if the design value is greater than 53 ppb, the level of the NAAQS.

For the 1-hour NO₂ NAAQS, the maximum hourly concentration is determined for each day (i.e., the “daily maximum value”) in a given 3-year period. For each year, the 98th percentile of the daily maximum values is determined, and the design value is the average of the three annual 98th percentile values, rounded to the nearest integer in ppb. The 1-hour NO₂ NAAQS are met when the design value is less than or equal to 100 ppb, the level of the NAAQS.

In addition, the 1-hour design value must meet data completeness requirements in order to be considered valid. Specifically, a sample day is considered complete when at least 18 hourly measurements are reported. For each calendar quarter, the quarter is considered complete if at least 75% of the days in the quarter have complete data. The 1-hour NO₂ design value is considered complete when all 12 calendar quarters in the 3-year period have complete data. In addition, there are two data substitution tests specified in [Appendix S to 40 CFR Part 50](#) which may be used to yield a valid design value above or below the NAAQS, respectively, in the event that a site falls short of the minimum data completeness requirement.

6. NO₂ Concentrations Measured at Ambient Air Monitoring Sites Across the U.S.

Table 1 below presents summary statistics based on the two daily NO₂ NAAQS metrics: the daily maximum 1-hour (MDA1) metric and the daily 24-hour average (DA24) metric. These statistics are presented for year-round and each season (winter=Dec/Jan/Feb, spring=Mar/Apr/May, summer=Jun/Jul/Aug, autumn=Sep/Oct/Nov) based on data reported to AQS for 2021-2023. Table 2 presents the same summary statistics for the MDA1 and DA24 metrics for each [NOAA Climate Region](#)⁴. Finally, Table 3 presents the same set of summary statistics for the two daily NO₂ metrics based on three types of sites: near-road sites, urban NCore and PAMS sites, and rural sites.

⁴For Table 2, monitoring sites in Alaska were assigned to the Northwest Region, monitoring sites in Hawaii were assigned to the West region, and monitoring sites in Puerto Rico were assigned to the Southeast region.

Table 1. National distribution of NO₂ concentrations in ppb by season for 2021-2023.⁵ **Source:** AQS.

metric	season	N.sites	N.obs	mean	SD	min	p1	p5	p10	p25	p50	p75	p90	p95	p98	p99	max	max.site
MDA1	all	404	418,695	16.7	12.2	-3.0	0.7	1.8	3.0	6.8	14.1	24.6	34.3	39.8	45.6	49.7	315.3	201950001
MDA1	winter	394	100,944	20.2	13.1	-1.0	0.7	2.0	3.9	9.2	19.0	29.6	38.1	42.9	48.7	53.0	109.2	295100094
MDA1	spring	392	103,636	15.9	12.2	-2.0	0.6	1.5	2.5	6.0	13.0	23.7	34.0	39.4	45.1	48.9	113.0	490210005
MDA1	summer	395	103,747	13.2	9.9	-1.2	0.8	1.8	2.8	5.6	10.8	18.6	27.2	32.9	39.2	43.2	119.1	060010015
MDA1	autumn	394	102,645	17.7	12.3	-3.0	0.7	1.8	3.0	7.6	15.7	25.7	35.0	40.4	46.3	50.5	315.3	201950001
DA24	all	404	418,695	7.9	6.9	-3.3	0.1	0.7	1.3	2.8	5.9	11.0	17.4	21.8	27.1	30.8	64.1	060374008
DA24	winter	394	100,944	10.3	8.1	-1.8	0.1	0.9	1.7	4.0	8.4	14.7	21.6	26.2	31.6	35.3	64.1	060374008
DA24	spring	392	103,636	6.9	6.0	-2.3	0.1	0.6	1.1	2.5	5.0	9.6	15.3	19.2	23.9	27.0	57.7	060374008
DA24	summer	395	103,747	6.0	5.1	-1.9	0.1	0.7	1.2	2.4	4.5	8.0	12.8	16.2	20.7	24.1	53.6	530330030
DA24	autumn	394	102,645	8.5	7.1	-3.3	0.1	0.7	1.3	3.2	6.6	12.0	18.4	22.7	27.8	31.3	62.0	060374008

N.sites = number of sites; N.obs = number of observations; SD = standard deviation; min = minimum; p1, p5, p10, p25, p50, p90, p95, p98, p99 = 1st, 5th, 10th, 25th, 50th, 90th, 95th, 98th, 99th percentiles; max = maximum; max.site = AQS ID number for the monitoring site corresponding to the observation in the max column. winter = December/January/February; spring = March/April/May; summer = June/July/August; autumn = September/October/November.

According to Table 1, NO₂ concentrations are generally higher during the fall and winter months and lower during the spring and summer months. This is at least partially due to NO_x budgeting programs such as CSAPR which are designed to reduce NO_x emissions from stationary sources during the spring and summer months when these emissions are most likely to contribute to elevated ozone concentrations. Table 2 shows that measured NO₂ concentrations are comparable across most regions of the U.S., except for the West North Central region, which includes more rural states in the northern Rocky Mountains and Great Plains, where NO₂ concentrations are significantly lower. Finally, Table 3 shows that near-road NO₂ monitoring sites tend to measure slightly higher concentrations than typical urban NO₂ sites, while NO₂ concentrations measured at rural sites are typically much lower than those measured in urban areas. The high maximum MDA1 concentration measured at a rural site in Kansas appears to be an isolated occurrence whose cause is unknown.

Table 2. National distribution of NO₂ concentrations in ppb by climate region for 2021-2023.⁵ **Source:** AQS.

metric	region	N.sites	N.obs	mean	SD	min	p1	p5	p10	p25	p50	p75	p90	p95	p98	p99	max	max.site
MDA1	all	404	418,695	16.7	12.2	-3.0	0.7	1.8	3.0	6.8	14.1	24.6	34.3	39.8	45.6	49.7	315.3	201950001
MDA1	Central	31	32,249	19.2	11.6	-0.7	1.5	3.3	5.1	9.9	17.6	27.0	35.1	40.0	45.8	49.2	109.2	295100094
MDA1	East North Central	20	20,511	17.0	10.9	-0.2	1.0	1.9	3.4	8.5	15.7	24.1	32.2	37.0	42.4	46.0	107.4	191770006
MDA1	Northeast	58	60,379	19.0	11.6	-2.0	1.3	3.0	5.0	9.8	17.7	26.9	35.0	39.8	45.4	49.3	97.0	340170006
MDA1	Northwest	6	6,276	21.2	9.6	1.6	4.0	6.7	9.2	14.0	20.6	27.4	33.5	37.7	43.0	47.4	78.5	530330030
MDA1	South	66	66,104	14.3	11.0	-1.8	0.8	2.2	3.2	5.9	11.3	20.4	30.5	36.0	41.8	45.9	315.3	201950001
MDA1	Southeast	39	40,243	16.6	10.5	-1.0	1.0	2.5	4.1	8.1	15.0	23.5	31.2	36.0	41.1	44.8	94.8	120110035
MDA1	Southwest	56	58,601	17.8	13.6	-0.7	0.6	1.3	2.7	6.7	14.3	27.0	38.2	43.4	49.2	53.3	113.0	490210005
MDA1	West	94	99,104	19.0	12.9	-0.9	0.9	2.2	4.0	8.4	16.6	27.7	37.4	42.5	48.4	52.8	119.1	060010015
MDA1	West North Central	34	35,228	5.8	6.2	-3.0	0.0	0.7	1.0	1.9	3.7	7.4	13.9	18.8	24.8	29.4	111.9	560210100
DA24	all	404	418,695	7.9	6.9	-3.3	0.1	0.7	1.3	2.8	5.9	11.0	17.4	21.8	27.1	30.8	64.1	060374008
DA24	Central	31	32,249	9.1	6.4	-1.3	0.6	1.4	2.2	4.3	7.6	12.6	18.1	21.6	25.8	28.3	44.0	170310076
DA24	East North Central	20	20,511	8.1	5.6	-0.9	0.4	1.1	1.8	3.8	7.0	11.4	15.8	18.8	22.3	24.6	36.5	261630093
DA24	Northeast	58	60,379	9.3	6.7	-2.7	0.6	1.5	2.2	4.2	7.7	12.9	18.5	22.2	26.9	30.4	53.0	340390004
DA24	Northwest	6	6,276	10.7	5.5	1.0	2.1	3.2	4.1	6.5	10.0	14.2	17.9	20.4	23.6	26.0	53.6	530330030
DA24	South	66	66,104	6.2	5.3	-2.3	-0.2	0.8	1.3	2.5	4.6	8.4	13.5	17.0	21.3	24.0	47.5	482011052
DA24	Southeast	39	40,243	7.7	5.7	-1.6	0.5	1.1	1.8	3.4	6.2	10.7	15.7	19.1	22.9	25.5	37.1	517600025
DA24	Southwest	56	58,601	8.3	8.0	-1.9	0.1	0.6	1.1	2.6	5.5	11.3	19.9	25.5	31.5	35.6	60.5	080310028
DA24	West	94	99,104	9.4	7.8	-1.4	0.1	1.0	1.9	3.7	7.1	13.2	20.7	25.4	30.6	34.2	64.1	060374008
DA24	West North Central	34	35,228	2.1	2.2	-3.3	-0.0	0.2	0.4	0.8	1.5	2.8	4.6	6.2	8.6	10.6	27.6	460990009

N.sites = number of sites; N.obs = number of observations; SD = standard deviation; min = minimum; p1, p5, p10, p25, p50, p90, p95, p98, p99 = 1st, 5th, 10th, 25th, 50th, 90th, 95th, 98th, 99th percentiles; max = maximum; max.site = AQS ID number for the monitoring site corresponding to the observation in the max column. Central = Illinois, Indiana, Kentucky, Missouri, Ohio, Tennessee, West Virginia; East North Central = Iowa, Minnesota, Michigan, Wisconsin; Northeast = Connecticut, Delaware, Maine, Maryland, Massachusetts, New Hampshire, New Jersey, New York, Pennsylvania, Rhode Island, Vermont; Northwest = Alaska, Idaho, Oregon, Washington; South = Arkansas, Kansas, Louisiana, Mississippi, Oklahoma, Texas; Southeast = Alabama, Florida, Georgia, North Carolina, South Carolina, Virginia; Southwest = Arizona, Colorado, New Mexico, Utah; West = California, Hawaii, Nevada; West North Central = Montana, Nebraska, North Dakota, South Dakota, Wyoming.

⁵Negative concentration values may appear in AQS datasets down to the negative of the lower detection limit (LDL) to allow for normal instrument variability at very low concentrations. Data that exceed the negative of the LDL is typically indicative of a malfunction or another issue that affects the data defensibility.

Table 3. National distribution of NO₂ concentrations in ppb by site type for 2021-2023.⁵ **Source:** [AQS](#).

metric	site.type	N.sites	N.obs	mean	SD	min	p1	p5	p10	p25	p50	p75	p90	p95	p98	p99	max	max.site
MDA1	All Sites	404	418,695	16.7	12.2	-3.0	0.7	1.8	3.0	6.8	14.1	24.6	34.3	39.8	45.6	49.7	315.3	201950001
MDA1	Near Road	67	69,213	25.4	11.8	-0.6	4.2	8.3	11.0	16.7	24.3	33.0	41.0	46.1	52.2	57.0	119.1	060010015
MDA1	NCore/PAMS	54	55,958	16.6	11.0	-0.8	1.0	3.0	4.5	8.0	14.0	23.3	32.7	37.9	43.4	47.1	111.9	560210100
MDA1	Rural Sites	36	37,014	5.1	6.4	-0.9	0.1	0.7	1.0	1.7	3.0	5.9	11.8	17.6	25.5	30.6	315.3	201950001
DA24	All Sites	404	418,695	7.9	6.9	-3.3	0.1	0.7	1.3	2.8	5.9	11.0	17.4	21.8	27.1	30.8	64.1	060374008
DA24	Near Road	67	69,213	13.9	7.8	-1.2	1.7	3.8	5.2	8.1	12.5	18.2	24.5	28.8	34.2	38.0	64.1	060374008
DA24	NCore/PAMS	54	55,958	7.3	5.5	-1.8	0.3	1.3	2.0	3.4	5.8	9.7	14.6	18.1	23.0	26.2	50.5	110010043
DA24	Rural Sites	36	37,014	2.1	2.5	-1.2	0.0	0.2	0.4	0.8	1.4	2.4	4.5	6.7	10.2	13.0	43.6	081230013

N.sites = number of sites; N.obs = number of observations; SD = standard deviation; min = minimum; p1, p5, p10, p25, p50, p90, p95, p98, p99 = 1st, 5th, 10th, 25th, 50th, 90th, 95th, 98th, 99th percentiles; max = maximum; max.site = AQS ID number for the monitoring site corresponding to the observation in the max column.

Figure 5 below shows a map of the annual NO₂ design values at U.S. ambient air monitoring sites based on data from 2023 and Figure 6 shows a map of the 1-hour NO₂ design values based on data from the 2021-2023 period. There were no sites with design values exceeding either NAAQS. The maximum annual design value was 27 ppb, while the maximum 1-hour design value was 71 ppb. Both of these maximum design values occurred at near-road sites in the Los Angeles, CA metropolitan area.

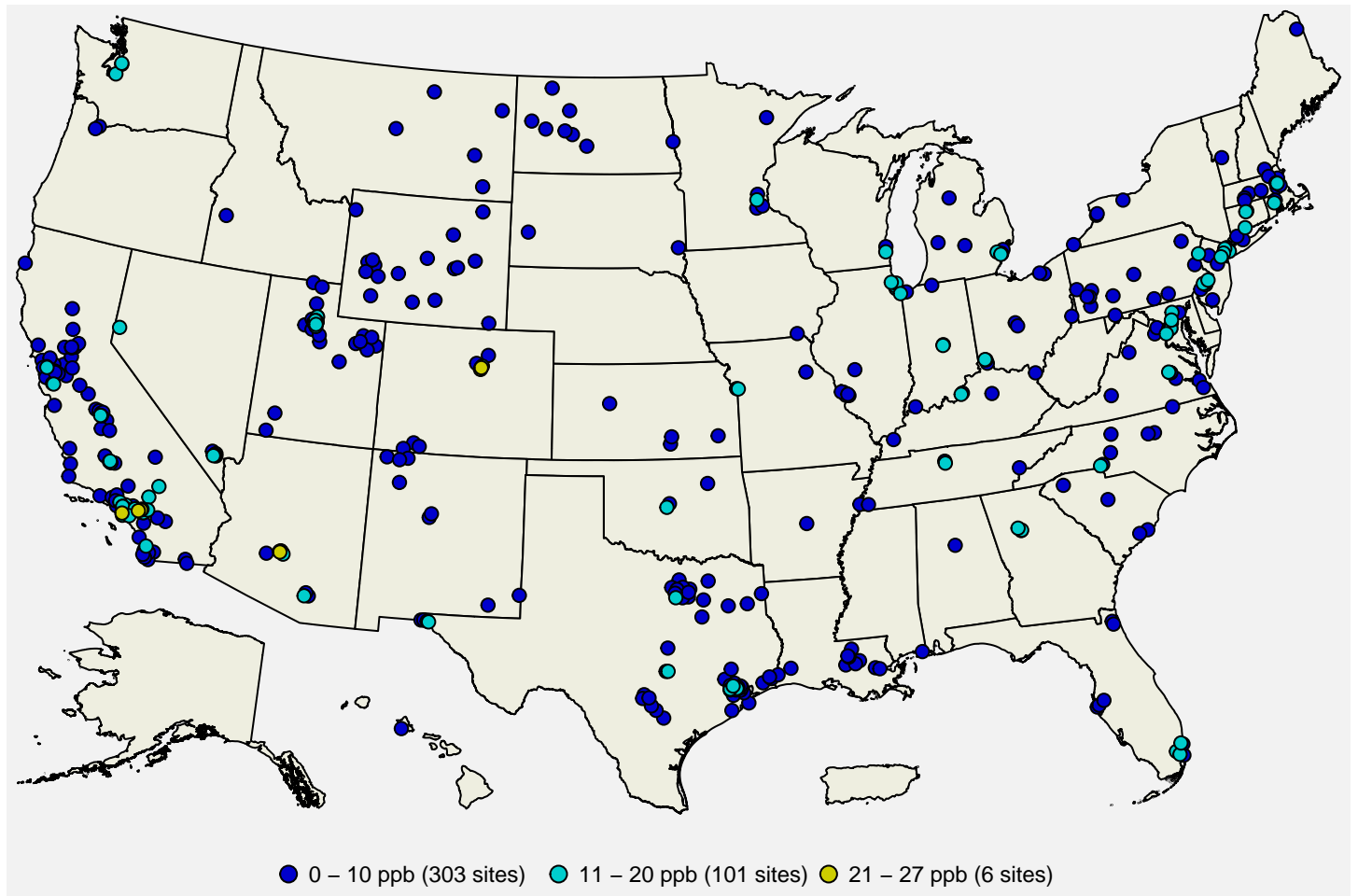


Figure 5: Annual NO₂ design values in ppb based on data from 2023. **Source:** [AQS](#).

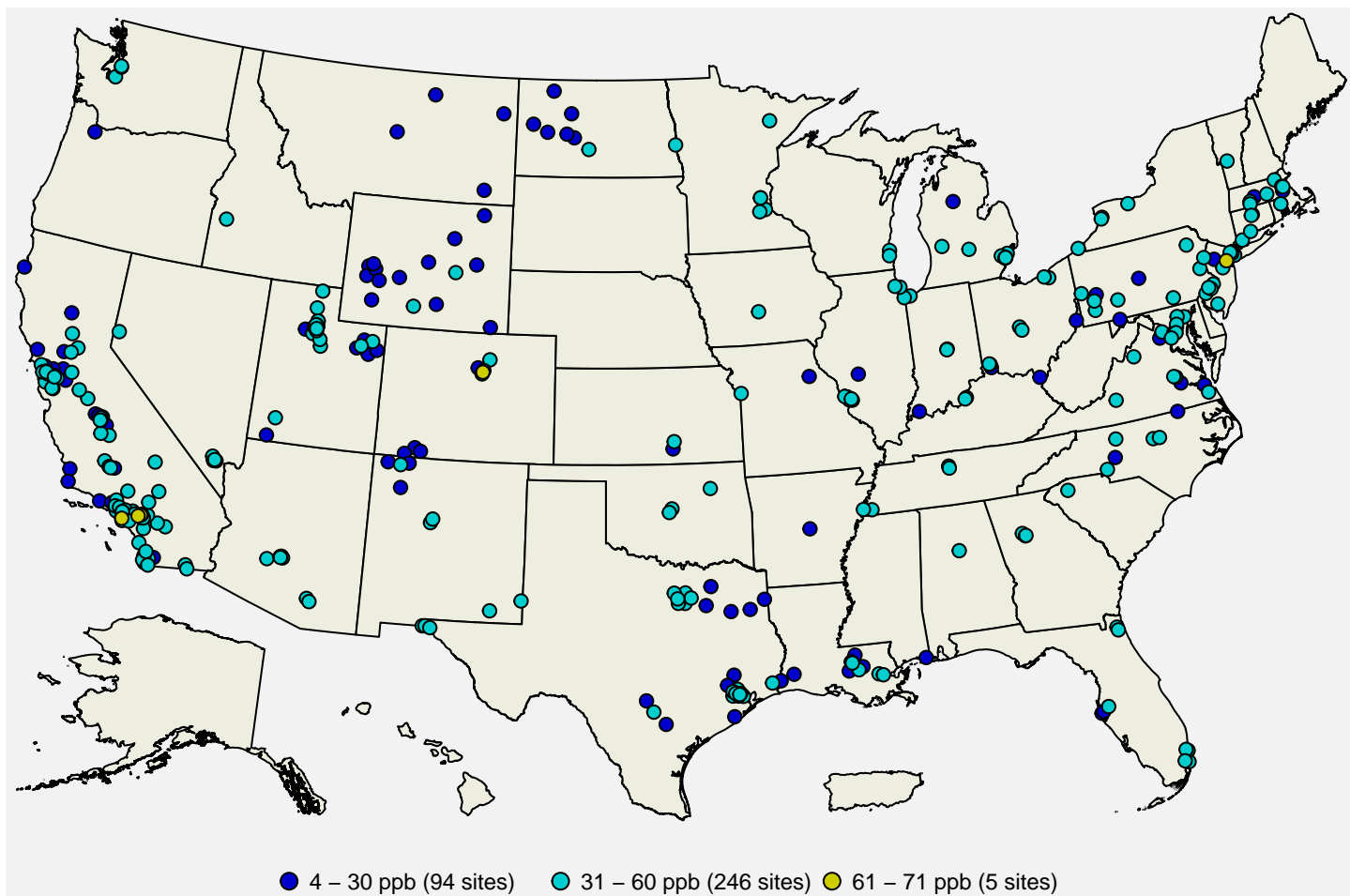


Figure 6: 1-hour NO₂ design values in ppb for the 2021-2023 period. **Source:** [AQS](#).

Figure 7 below shows a map of the site-level trends in the annual NO₂ design values at U.S. monitoring sites having valid design values in at least 18 years from 2000 through 2023. Figure 8 shows a map of the site-level trends in the 1-hour NO₂ design values at U.S. monitoring sites having valid design values in at least 17 of the 22 3-year periods from 2000 through 2023. The trends were computed using the Thiel-Sen estimator, and tests for significance (p-value < 0.05) were computed using the Mann-Kendall test. From these figures it is apparent that NO₂ concentrations have been decreasing at nearly all sites in the U.S. Two sites in North Dakota showed an increasing trend in the annual design value (one of these sites also had an increasing trend in the 1-hour design value), which is likely due to an increase in NO_x emissions from oil and gas extraction activity in the region.

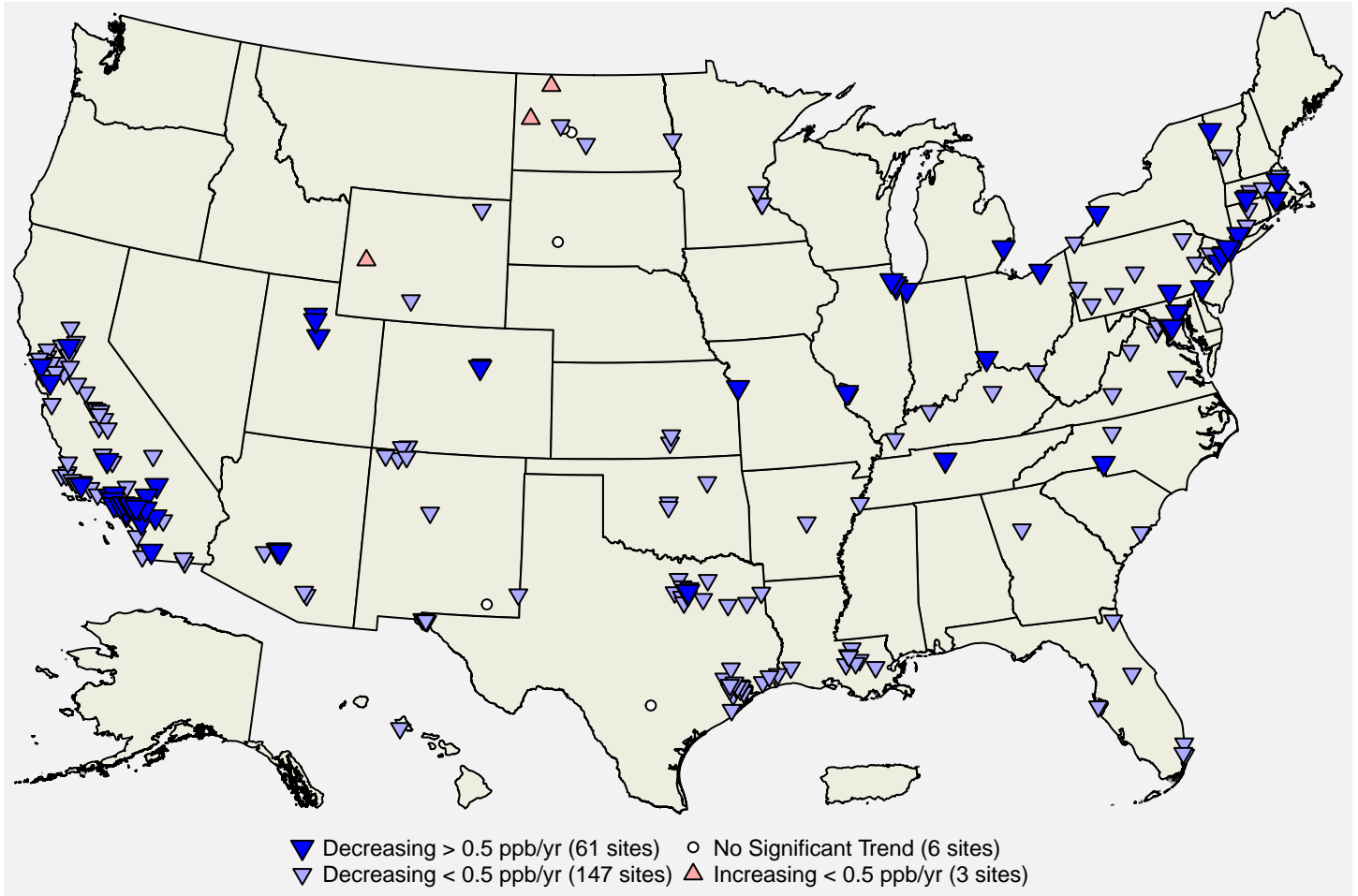


Figure 7: Site-level trends in annual NO₂ design values based on data from 2000 through 2023. **Source:** [AQS](#), trends computed using R statistical software.

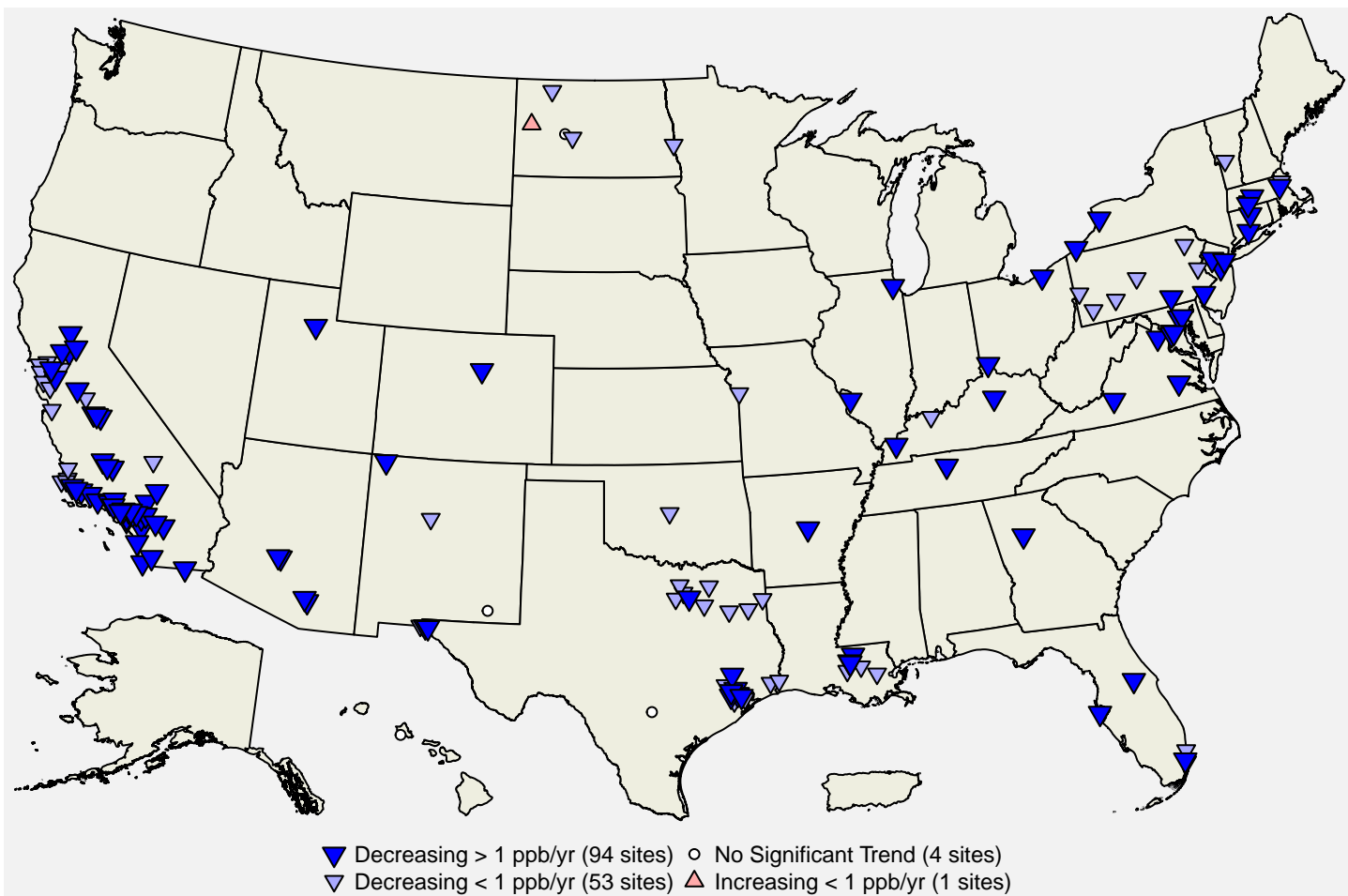


Figure 8: Site-level trends in 1-hour NO₂ design values based on data from 2000 through 2023. **Source:** [AQS](#), trends computed using R statistical software.

Figure 9 below shows the national trends in the annual and 1-hour NO₂ design values based on the 217 sites shown in Figure 7 and the 152 sites shown in Figure 8, respectively. The national median of the annual design values has decreased by 60% from about 15.8 ppb in 2000 to about 6.4 ppb in 2023. The national median of the 1-hour design values has decreased by 39% from 61 ppb in 2000 to 37 ppb in 2023.

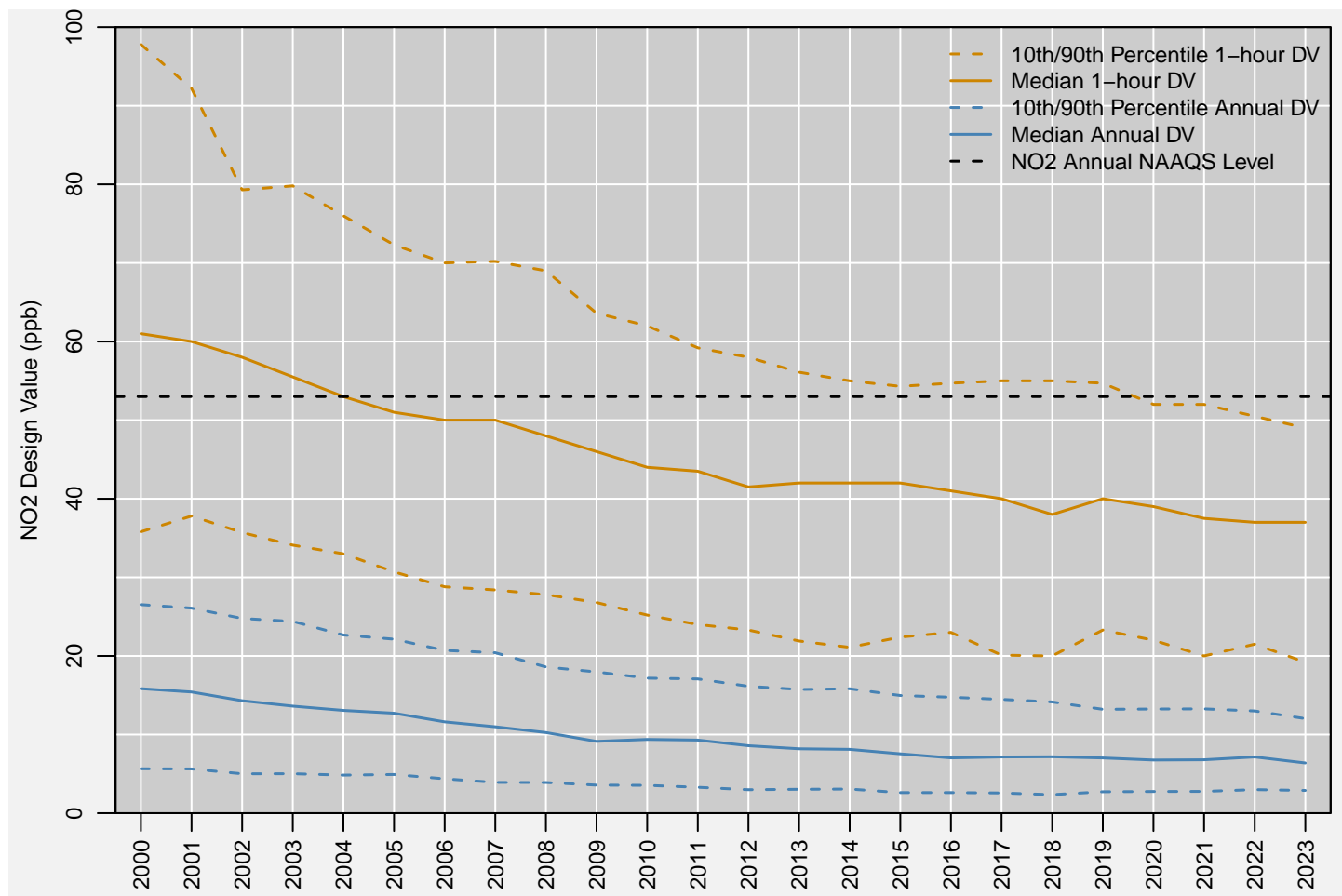


Figure 9: National trends in NO₂ design values in ppb, 2000 to 2023. **Source:** [AQS](#).

Figure 10 below shows the national distribution of the annual 98th percentile MDA1 NO₂ concentrations reported in each year from 1980 to 2023, while Figure 11 shows the national distribution of the annual mean NO₂ concentrations reported to EPA during the same period.⁶ The red line shows the number of sites included in the boxplot for each year. These figures show that NO₂ concentrations have decreased steadily over the past 40 years as older cars were replaced with newer models with lower NO_x emissions, and power plants and other industrial sources have added emissions controls and transitioned to cleaner burning fuels. The median 98th percentile MDA1 NO₂ concentration decreased by 61%, from 93.5 ppb in 1980 to 36.2 ppb in 2023. Similarly, the median annual mean NO₂ concentration decreased by 71%, from 23.2 ppb in 1980 to 6.8 ppb in 2023. Other than one site where the 2023 data quality is still being assessed, no sites have reported annual 98th percentile MDA1 NO₂ concentrations that would have exceeded the level of the 1-hour NO₂ NAAQS since 2008, and no sites have reported annual mean NO₂ concentrations that exceeded the level of the annual NO₂ NAAQS since 1991. The size of the NO₂ monitoring network increased from 1980 through the early 2000s, decreased slightly between 2002 and 2011, then increased again over the next few years as the near-road network was implemented. Over the past decade, annual mean and 98th percentile MDA1 NO₂ concentrations have been relatively constant at levels well below the NAAQS. This is likely due to higher concentrations measured at near-road sites offsetting continued reductions in NO₂ concentrations associated with reductions in NO_x emissions (see Figure 2).

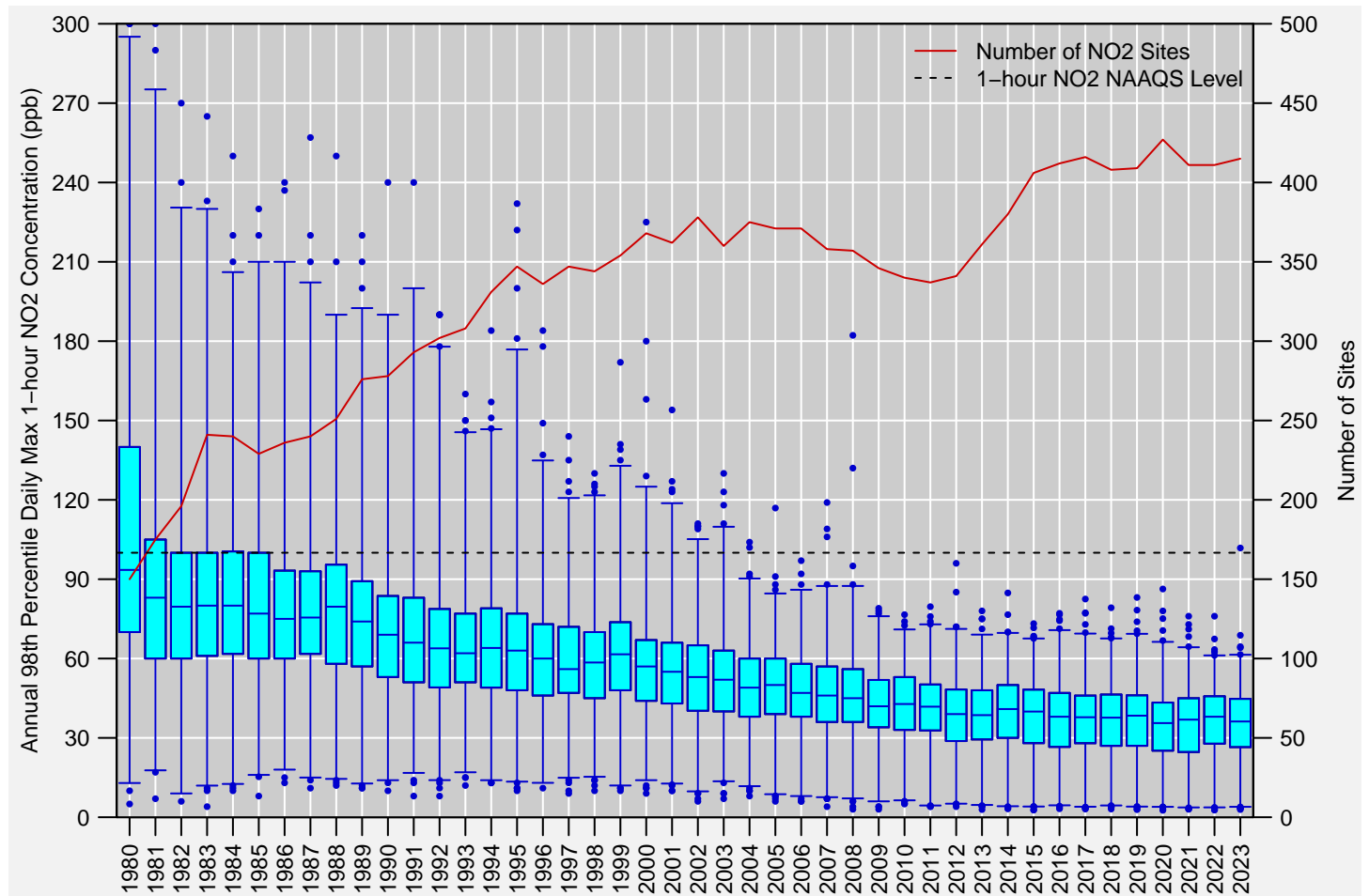


Figure 10: Distribution of annual 98th percentile MDA1 NO₂ concentrations measured at U.S. monitoring sites, 1980 to 2023. Boxes represent the median and interquartile range, whiskers extend to the 1st and 99th percentiles, and values outside this range are shown as circles. The red line shows the number of NO₂ monitoring sites reporting data to EPA in each year. **Source:** AQS.

⁶For this analysis, the annual mean and 98th percentile MDA1 NO₂ concentrations were retrieved from AQS for all U.S. sites for years that had at least 75% annual data completeness.

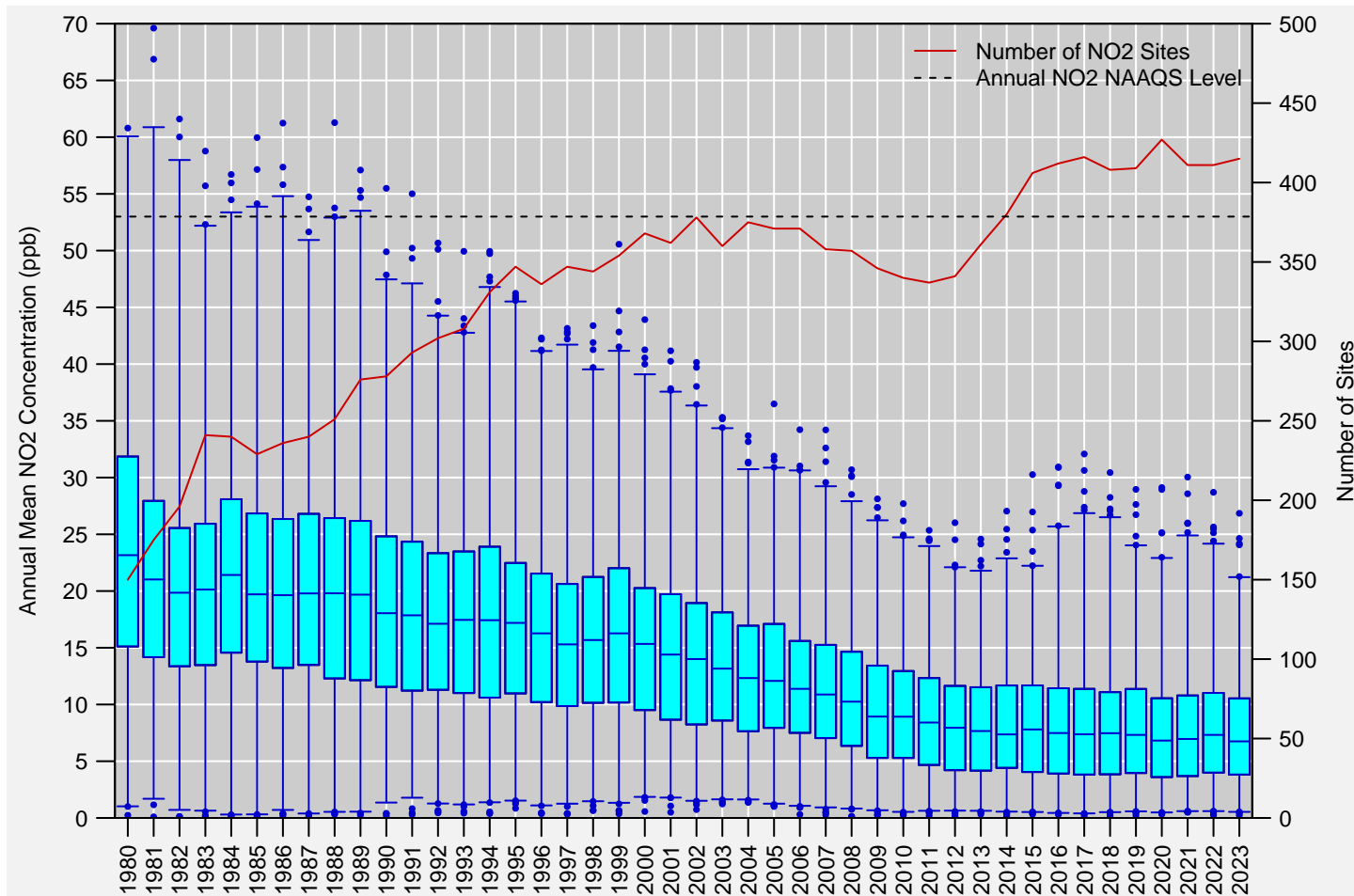


Figure 11: Distribution of annual mean NO₂ concentrations measured at U.S. monitoring sites, 1980 to 2023. Boxes represent the median and interquartile range, whiskers extend to the 1st and 99th percentiles, and values outside this range are shown as circles. The red line shows the number of NO₂ monitoring sites reporting data to EPA in each year. **Source:** AQS.

References

U.S. EPA. [Integrated Science Assessment for Oxides of Nitrogen - Health Criteria \(Final Report, January 2016\)](#). U.S. Environmental Protection Agency, Washington, DC, EPA/600/R-15/068, 2016.

U.S. EPA. [Policy Assessment for the Review of the Primary NAAQS for Oxides of Nitrogen \(Final Report, April 2017\)](#). U.S. Environmental Protection Agency, Research Triangle Park, NC, EPA-452/R-17-003, 2017.

Additional Resources

- [Nitrogen Dioxide \(NO₂\) Pollution](#)
- [Nitrogen Dioxide \(NO₂\) Primary Air Quality Standards](#)
- [National Emissions Inventory \(NEI\)](#)
- [Ambient Monitoring Technology Information Center \(AMTIC\)](#)
- [Air Quality Design Values](#)
- [National Air Quality: Status and Trends of Key Air Pollutants](#)
- [Air Data: Air Quality Data Collected at Outdoor Monitors Across the U.S.](#)