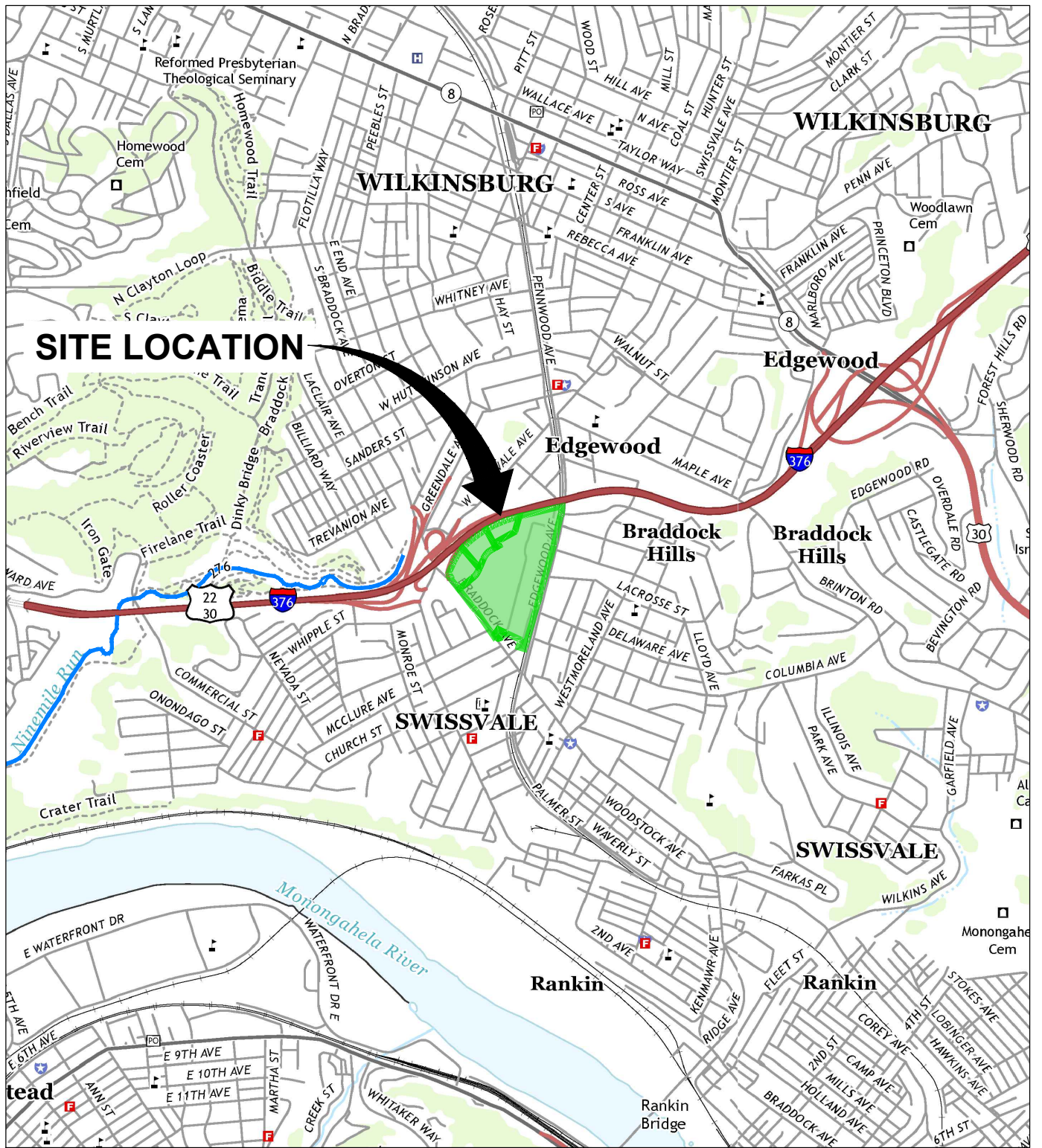
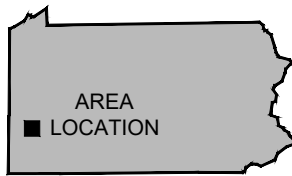


Figures



0 2000' 4000'

Approximate Scale: 1 in. = 2000 ft.



PENNSYLVANIA

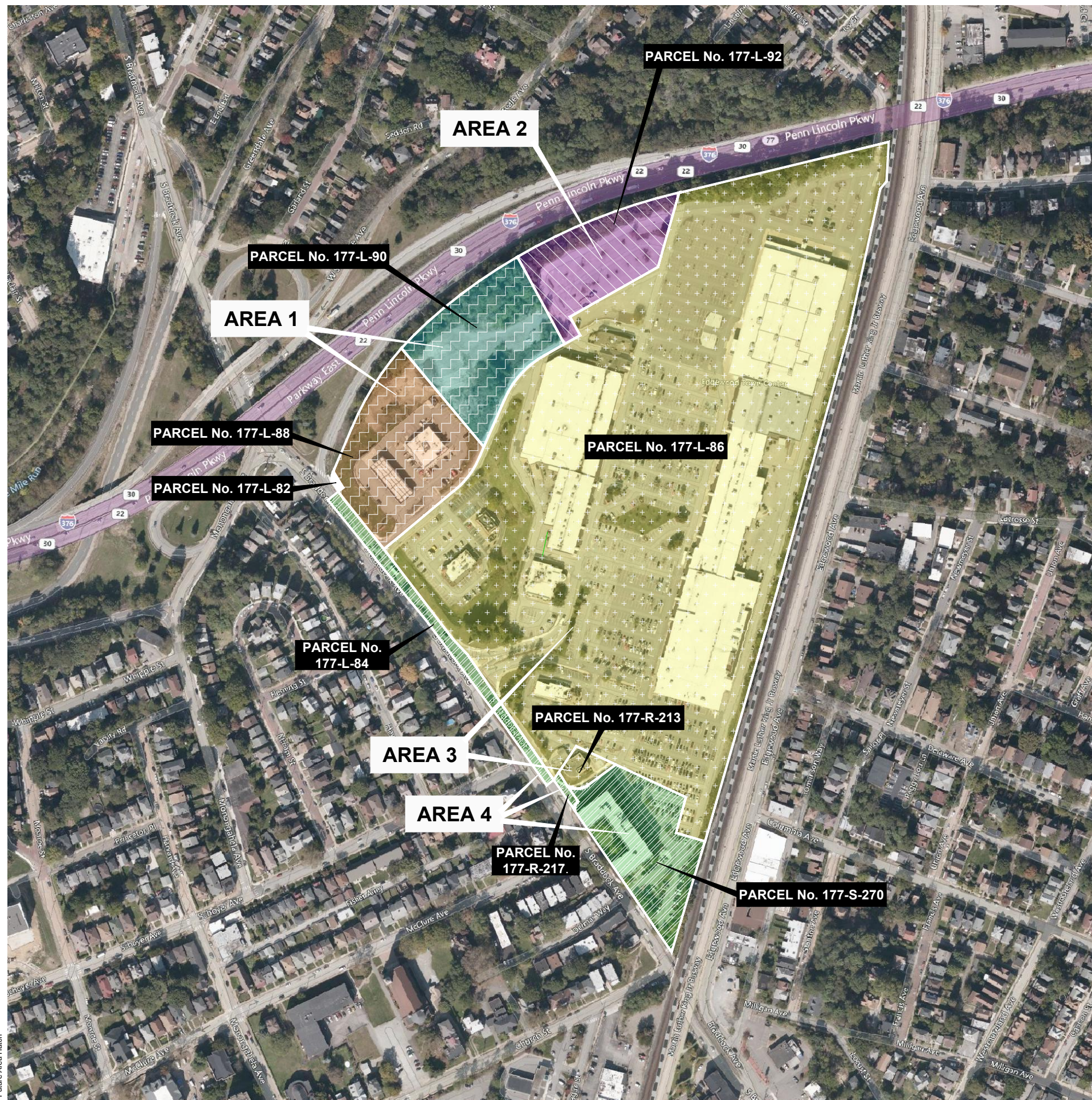
FORMER UNION SWITCH & SIGNAL DIVISION
PITTSBURGH, PENNSYLVANIA

FACILITY LOCATION

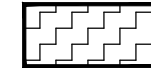
EPA Statement of Basis

FIGURE

1



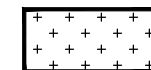
FUTURE LAND USE AREA KEY:



AREA 1: RESIDENTIAL - NO REDEVELOPMENT PLAN:
Lots D-1 (Parcel 177-L-88) and D-2 (Parcel 177-L-90)



AREA 2: RESIDENTIAL - RECENTLY DEVELOPED MULTIUNIT HOUSING:
Lot D-3 (Parcel 177-L-92)

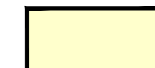


AREA 3: COMMERCIAL - FUTURE POTENTIAL FOR RESIDENTIAL:
(Parcel 177-L-86 and Parcel 177-R-213)



AREA 4: NON-RESIDENTIAL - NO CHANGE PROPOSED:
(Parcel 177-S-270 and Western Property Boundary Landscaped Parcels)

PROPERTY OWNER KEY:



EDGEWOOD STATION LLC



AGREE SHELF ES PA LLC



PARKWAY UNION
DEVELOPMENT CORP



GETGO PORTFOLIO II LP



EDGEWOOD HOUSING
PARTNERS

NOTES:

1. PARCEL INFORMATION PROVIDED BY ALLEGHENY COUNTY GIS VIEWER. ALL LOCATIONS ARE APPROXIMATE.
2. AERIAL PHOTOGRAPH PROVIDED BY MICROSOFT CORPORATION COPYRIGHT 2021.

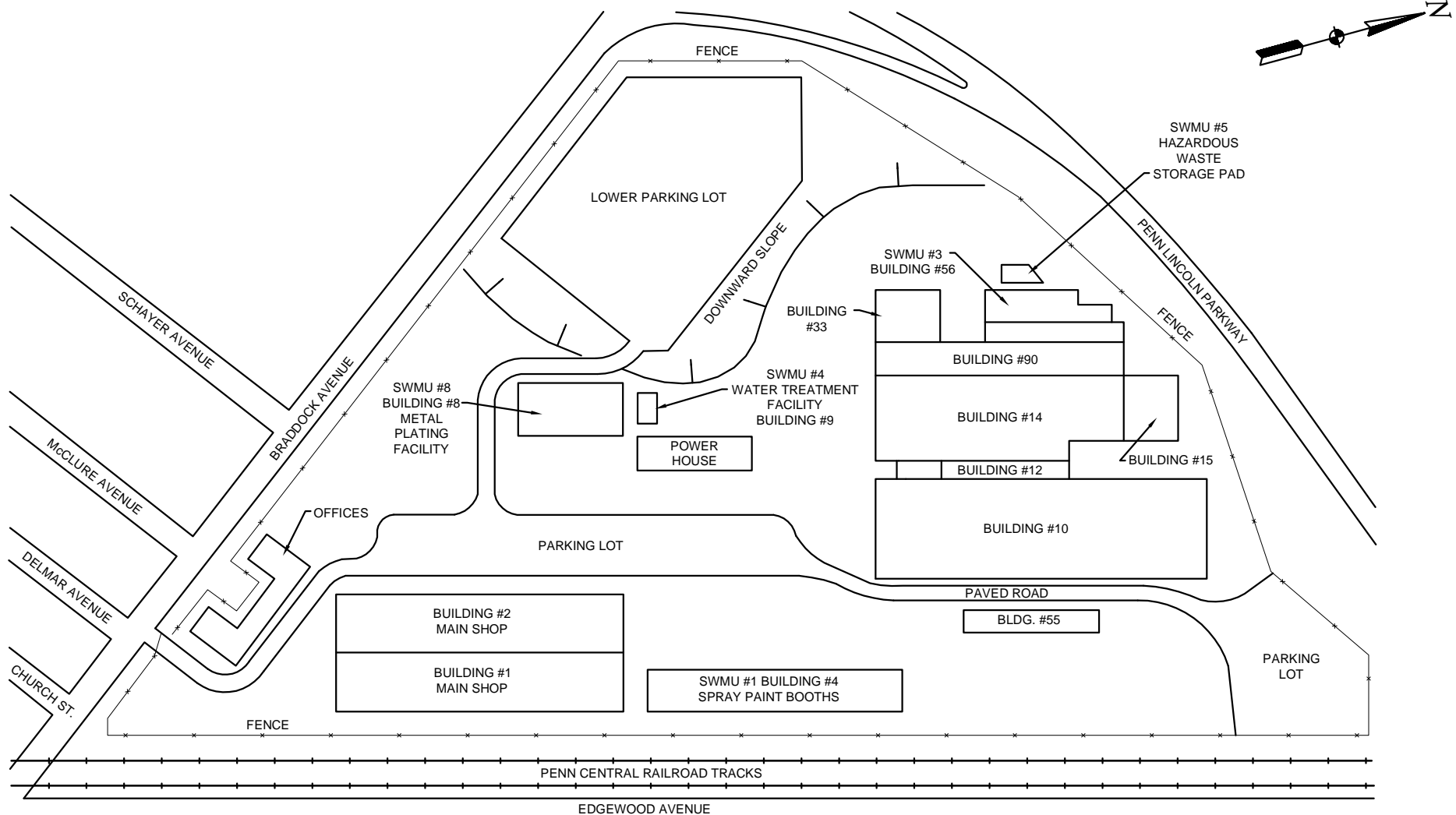


FORMER UNION SWITCH & SIGNAL DIVISION
PITTSBURGH, PENNSYLVANIA

PARCEL OWNERSHIP and AREAS

EPA Statement of Basis

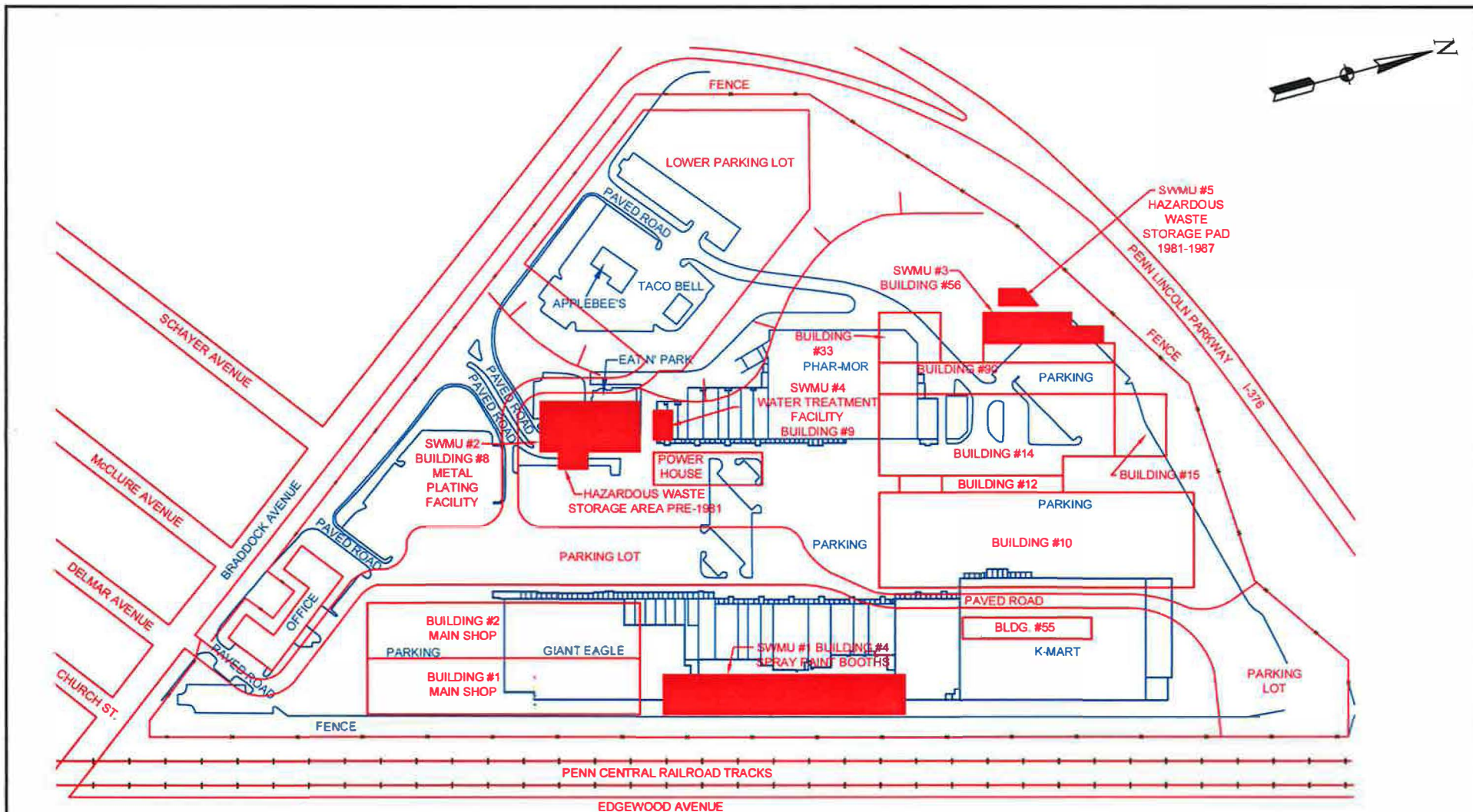
FIGURE
2



NOTE: THIS DRAWING IS NOT TO SCALE

TITLE			
HISTORIC SWMU LOCATIONS			
PROJECT			
Union Switch & Signal Division			
EPA STATEMENT OF BASIS			
SCALE	N.T.S.	DWN. BY	AWJ
DATE	8/21/08	APPR. BY	
JOB NO.		20497896	
FIG. NO.		3	

REFERENCE:
ENVIRONMENTAL PRIORITIES INITIATIVE PRELIMINARY ASSESSMENT,
NUS CORPORATION, OCTOBER 24, 1989.



NOTE: THIS DRAWING IS NOT TO SCALE

LEGEND

--- BOROUGH BOUNDARY
 --- PROPERTY LINE

OVERLAY LEGEND

--- HISTORIC SITE
 --- CURRENT SITE

REFERENCE:
 ENVIRONMENTAL PRIORITIES INITIATIVE PRELIMINARY ASSESSMENT,
 NUS CORPORATION, OCTOBER 24, 1989.

TITLE			
OVERLAY OF CURRENT AND HISTORIC MAP			
PROJECT			
Union Switch & Signal Division			
EPA STATEMENT OF BASIS			
SCALE	N.T.S.	OWN. BY	JAK
DATE	8/21/08	APPR. BY	
		JOB NO.	20497896
		FIG. NO.	4

Path: T:\ENVI\BACOHoldings\nc\PittsburghPA_PRO_REPORT_FIGURES\Braddock_Figures_2023.aprx\Fig8_Proposed_PostRemedial_CarePlan_Last Saved By jchen 2/22/2024

