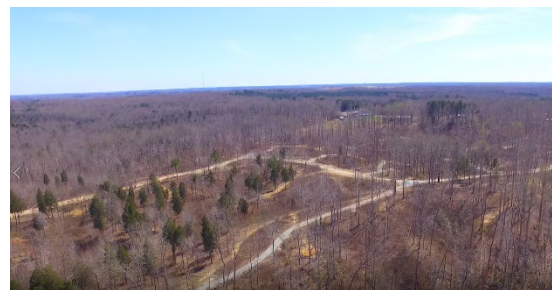


WWTP IMPROVEMENTS – LAND APPLICATION SYSTEM

STATE PROGRAM: Tennessee Department of Environment and Conservation

ASSISTANCE RECIPIENT: City of Camden

ASSISTANCE AMOUNT: \$9M



PROJECT DESCRIPTION

The City of Camden's wastewater treatment facility consists of a 0.5 million gallons per day lagoon treatment system and a wastewater collection system. Before making upgrades, the facility did not meet National Pollutant Discharge Elimination System permit limits for discharges to Cypress Creek. The City received a \$9 million CWSRF loan to make improvements to the wastewater treatment system and installed a land application site for additional disposal of treated wastewater effluent. The City now has two wastewater discharge options: to discharge to the Creek or land apply the treated effluent on approximately 340 acres of land. The land application system helps the community protect the Kentucky Lake and Tennessee River watershed by eliminating excess nutrient loading and biological oxygen demand levels from Cypress Creek. The City benefits from having treatment options to maintain environmental compliance and protect the fragile ecosystems in streams and rivers.

To read more about this case study, please visit https://www.epa.gov/sites/default/files/2021-02/documents/2020_pisces_compendium.pdf.