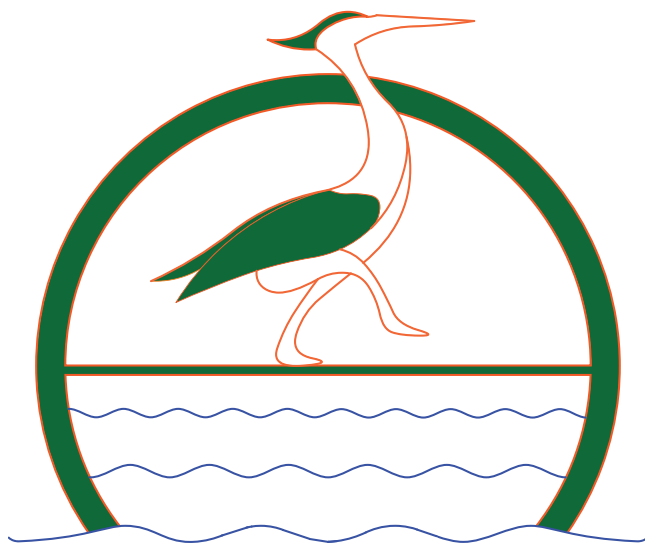


# Project Pond Walk

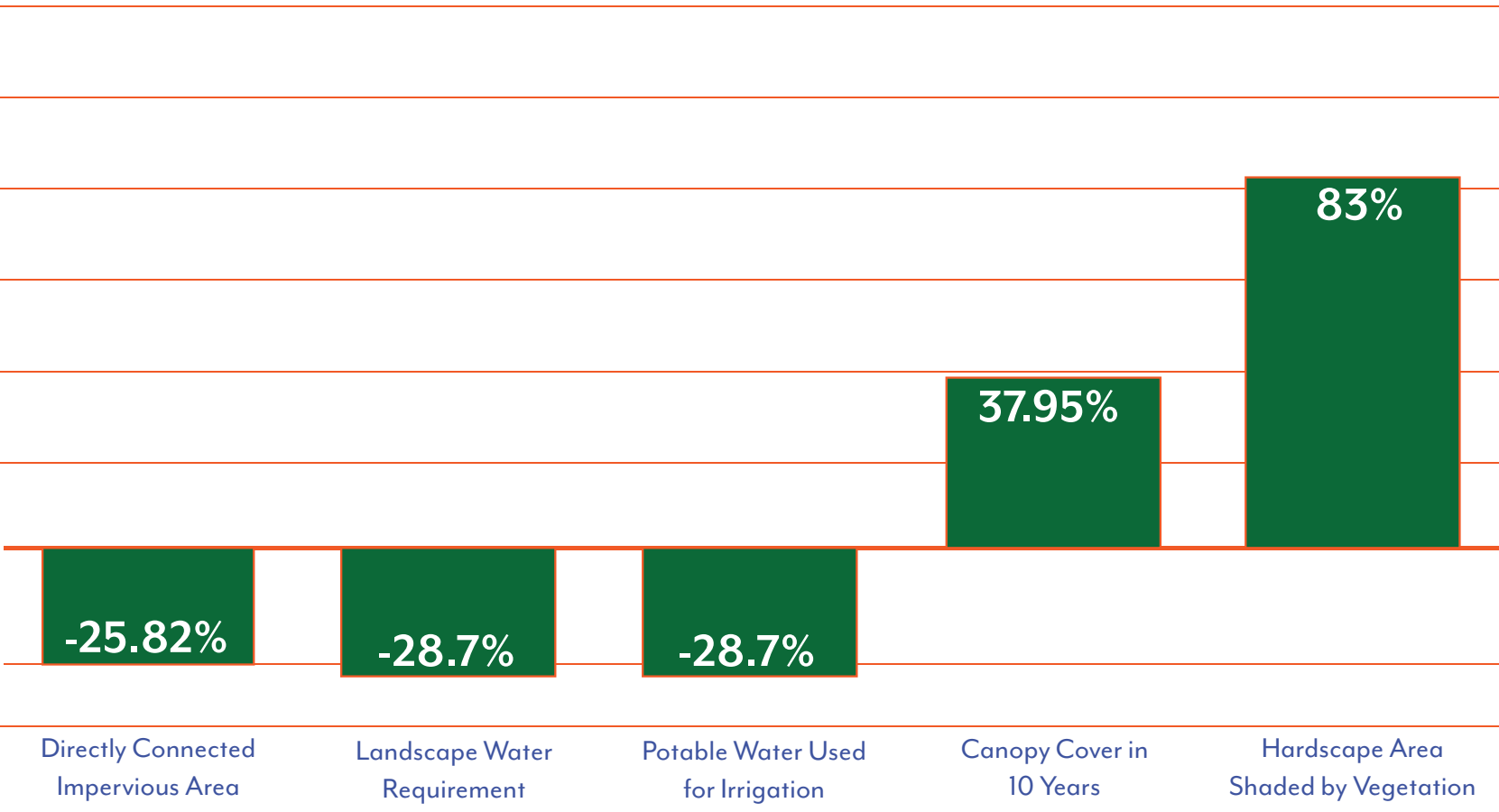
Hobart and William Smith Colleges



## Project Goals

- 1. Reduce stormwater loading of Odell’s Pond and prevent localized flooding of the Odell’s Village
- 2. Bolster campus connectivity
- 3. Engage students and visitors socially and educationally with the natural and cultural history of the region

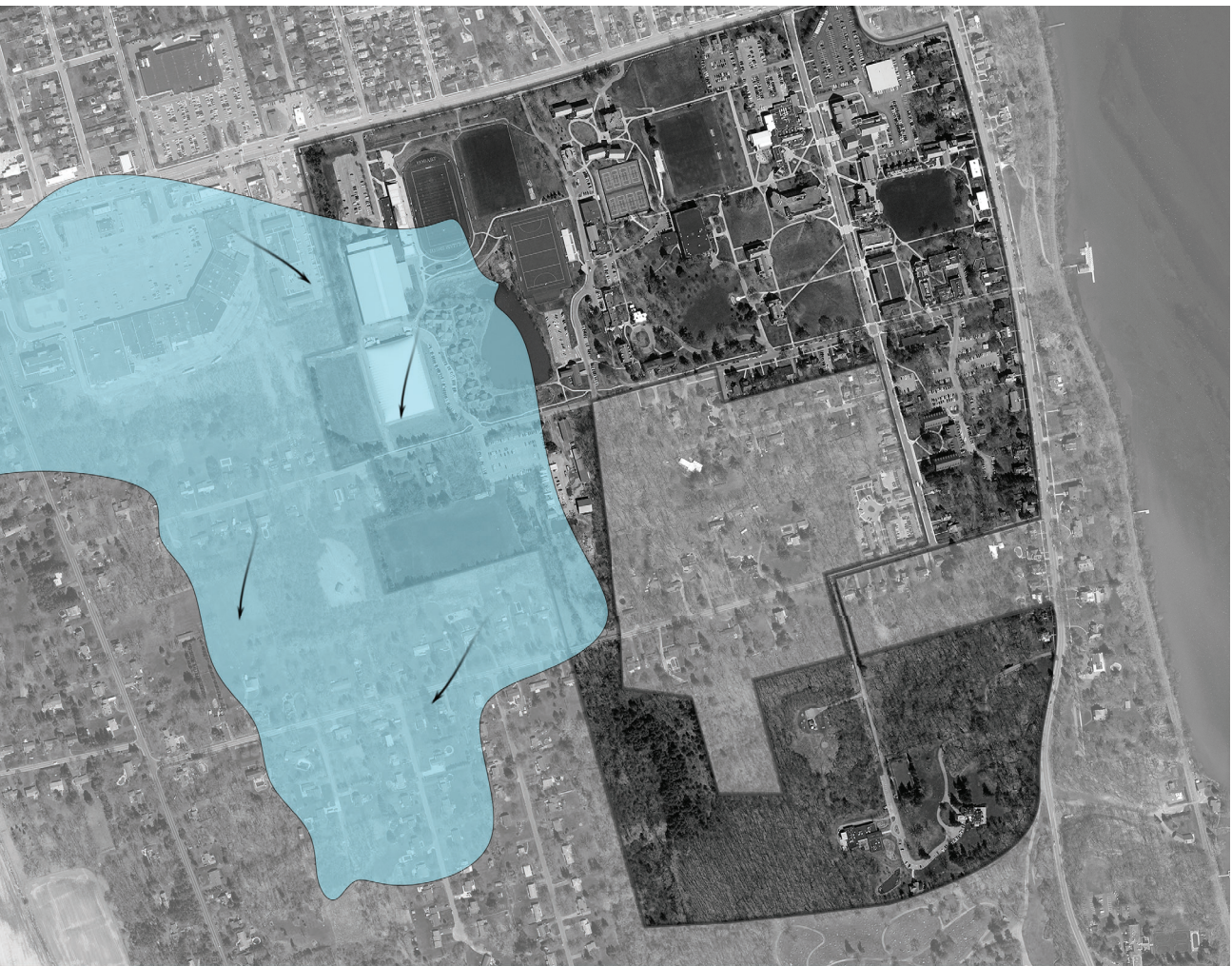
## Project Impacts



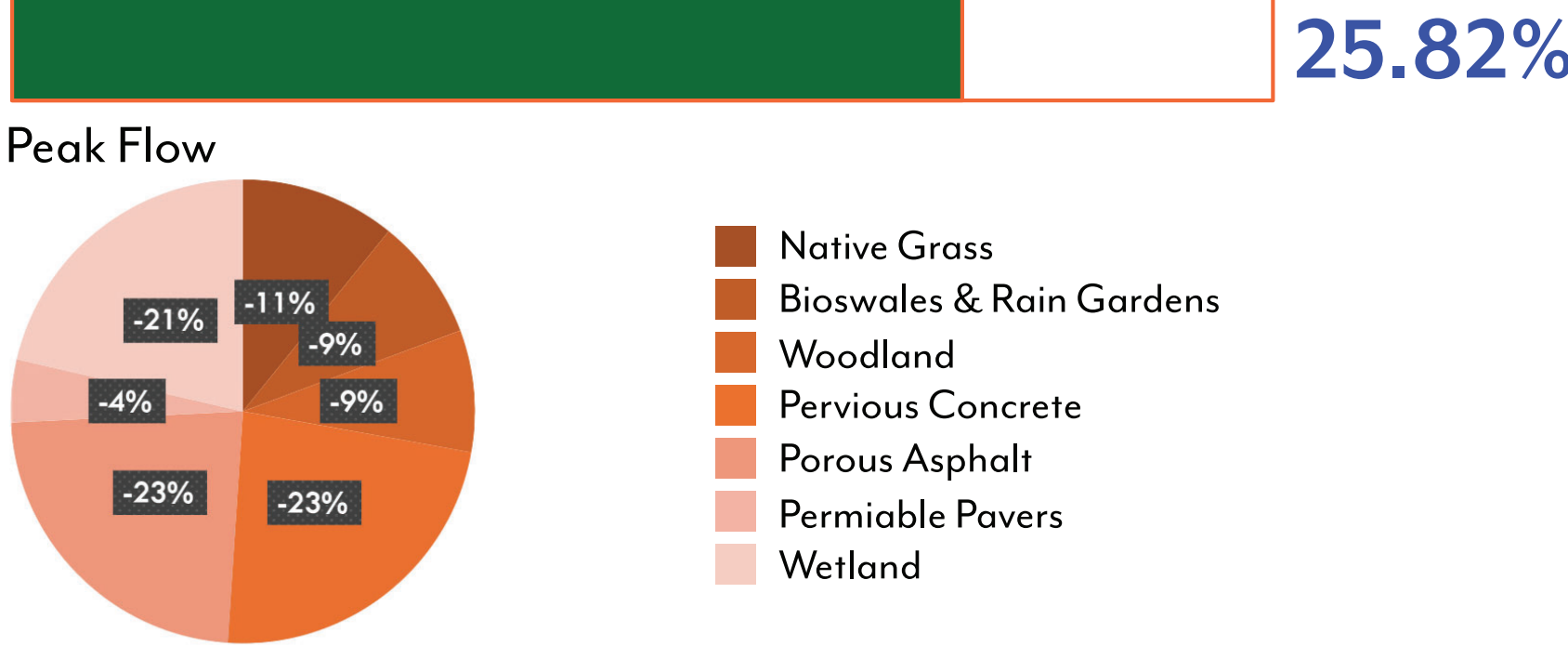
## Odells Pond Piped Water



## Watershed Map



## Decrease in Impervious Surfaces



## Decrease in Runoff



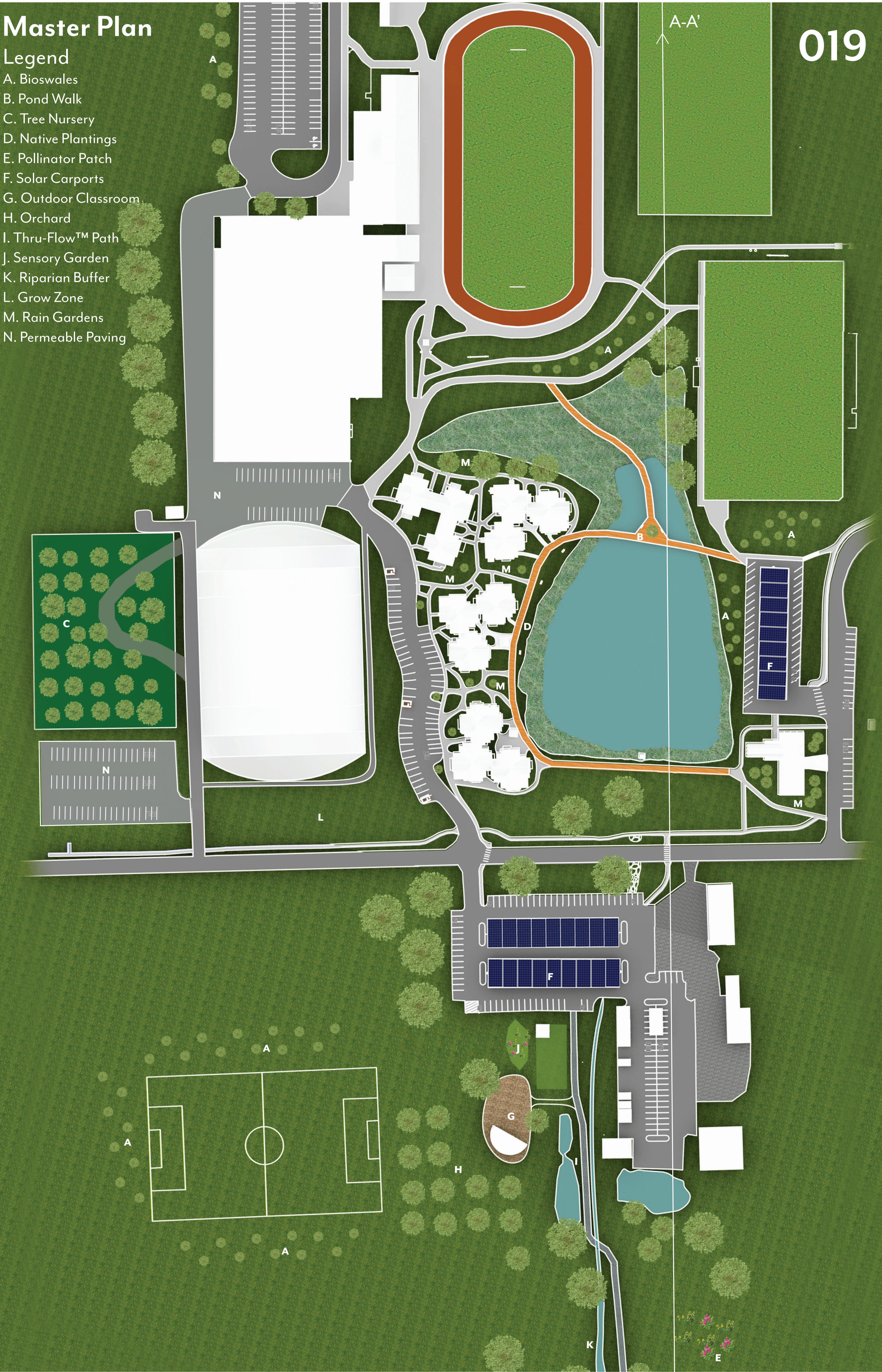
## Campus Map



## Master Plan

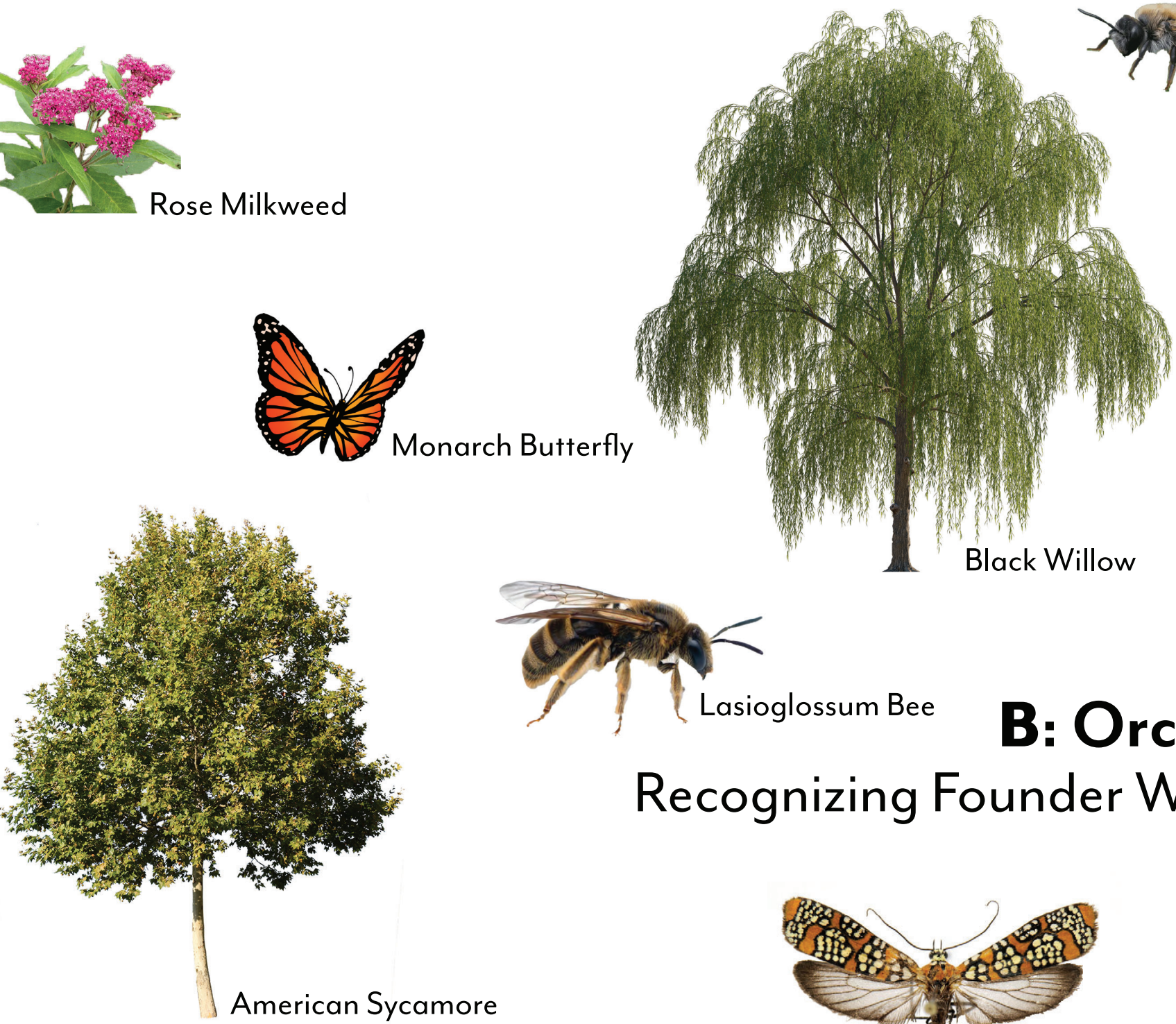
### Legend

- A. Bioswales
- B. Pond Walk
- C. Tree Nursery
- D. Native Plantings
- E. Pollinator Patch
- F. Solar Carports
- G. Outdoor Classroom
- H. Orchard
- I. Thru-Flow™ Path
- J. Sensory Garden
- K. Riparian Buffer
- L. Grow Zone
- M. Rain Gardens
- N. Permeable Paving





A: Odells Pond  
Wildlife Habitat and Student Connection Space



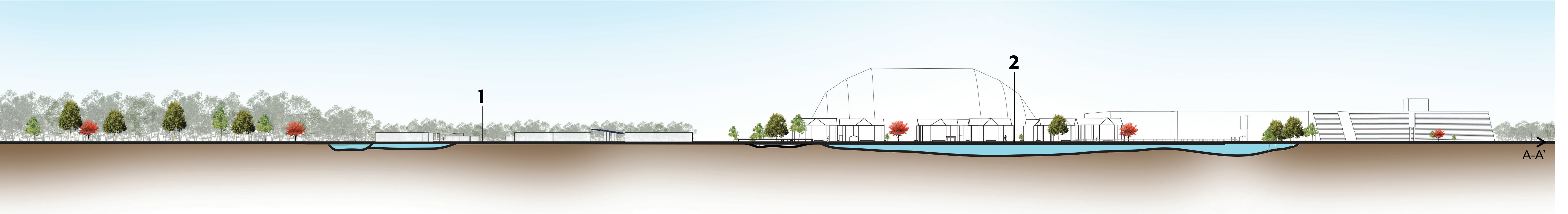
B: Orchard Pond  
Recognizing Founder William Smith



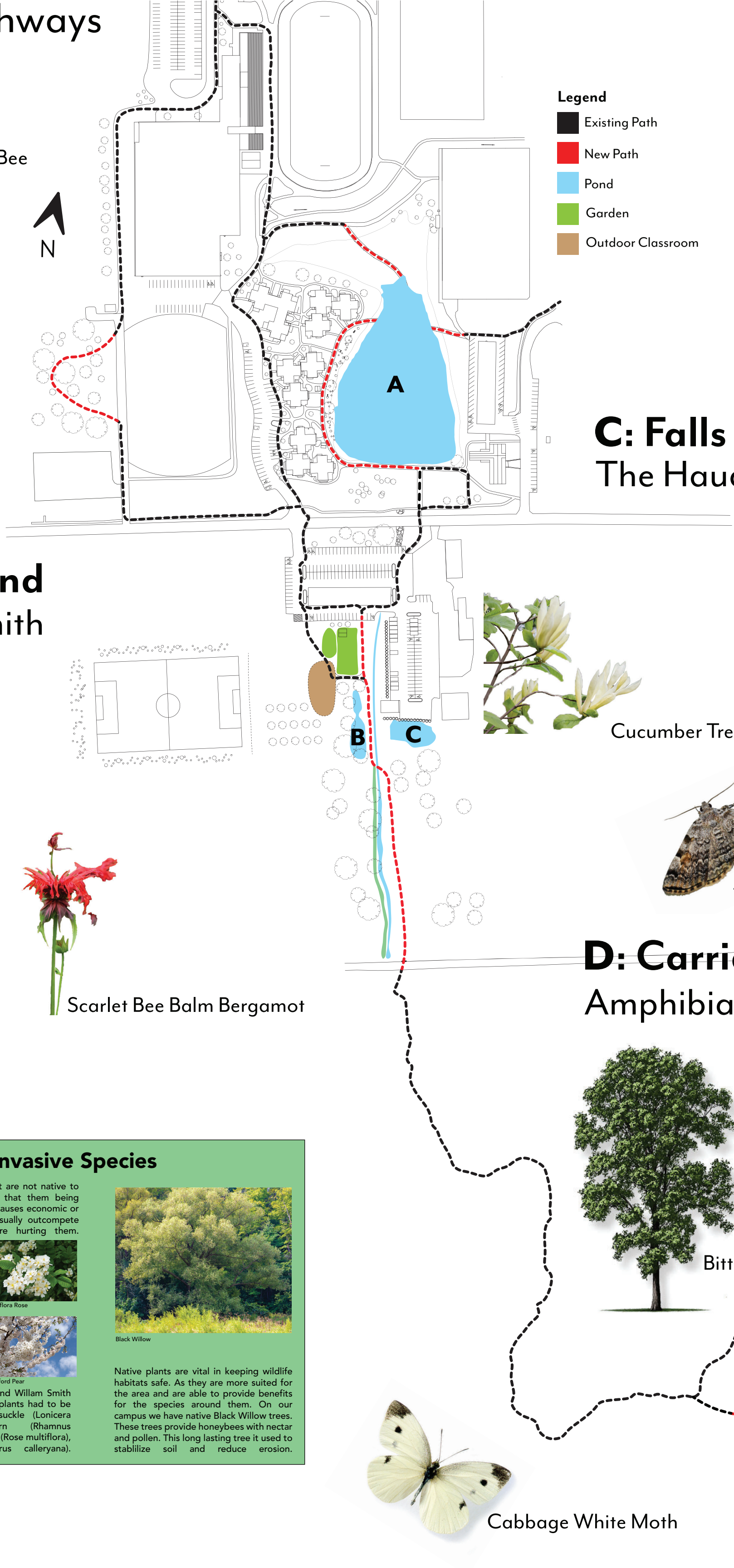
Rendered View 1



Section A-A'



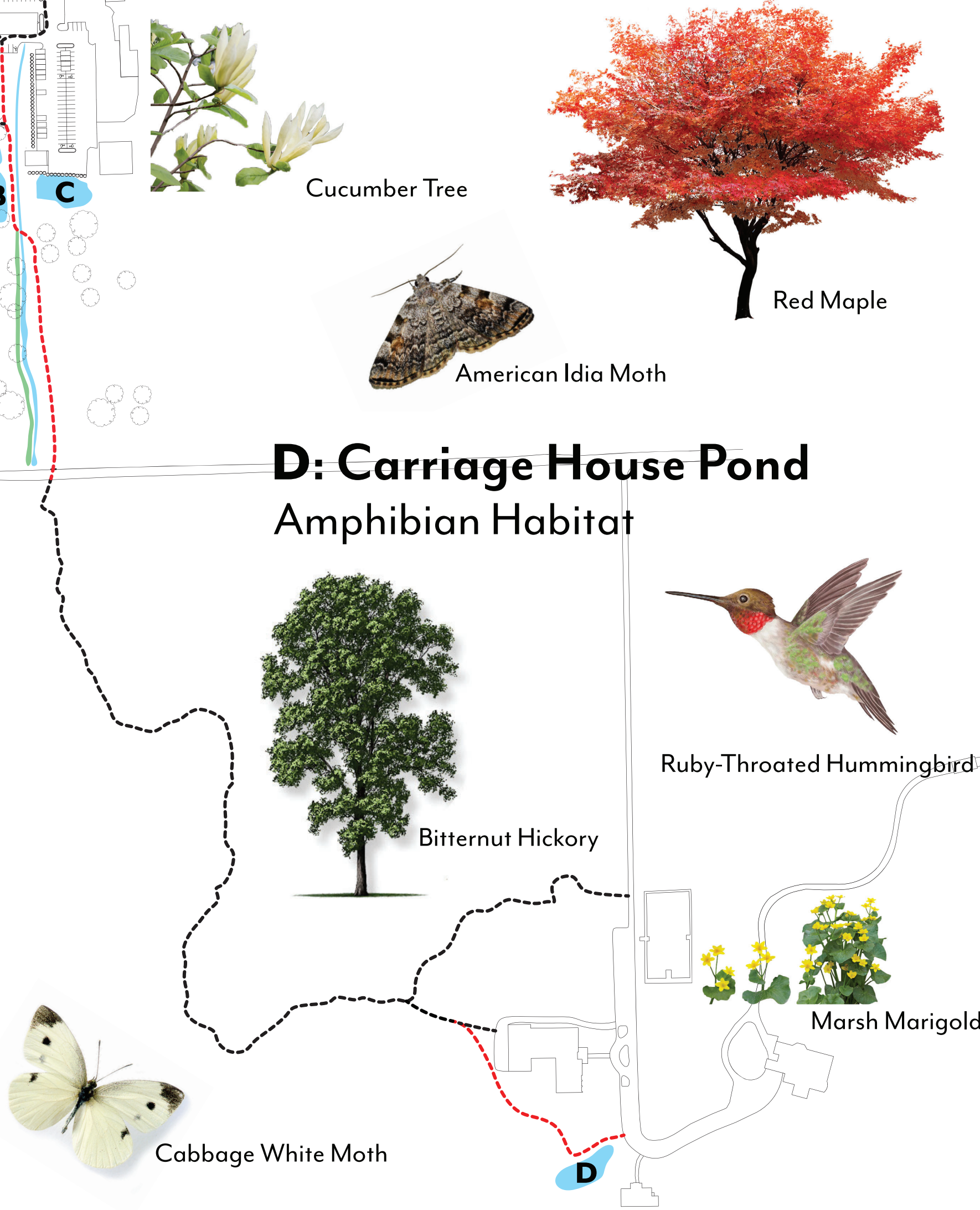
Pathways



C: Falls Pond  
The Haudenosaunee Confederacy



D: Carriage House Pond  
Amphibian Habitat



Increase in Canopy Cover:



Carbon Sequestered by New Trees:

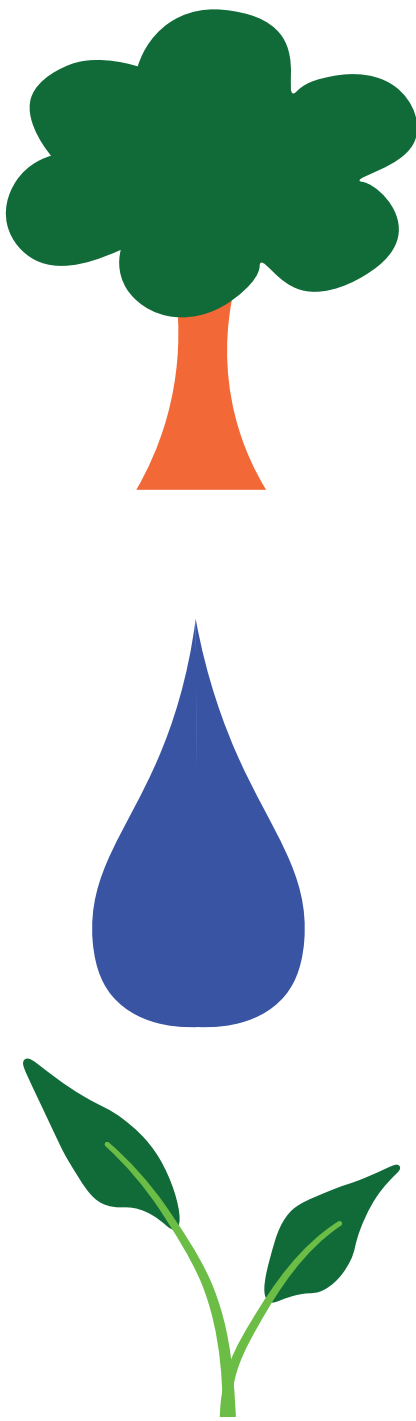
33,592.23 lbs/yr

Stormwater Managed:

83,681,759.5 gallons before  
69,970,163.30 gallons after

Restored Soils and Native Plants:

356,160.15 sq/ft



Rendered View 2

