

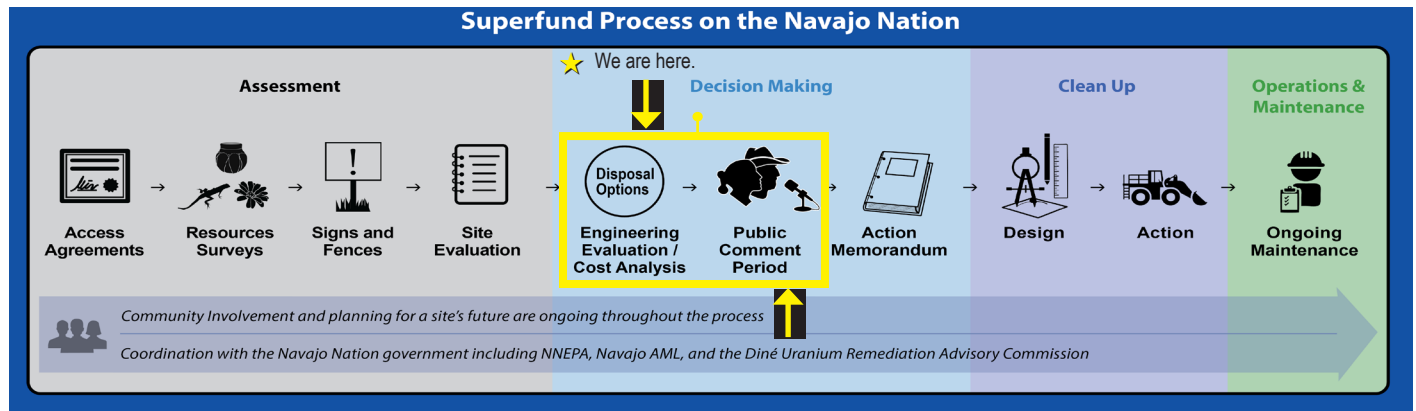


Recommended Cleanup Alternative for Section 9 Lease Mine Sites

U.S. Environmental Protection Agency • Region 9 • San Francisco, CA • November 2024

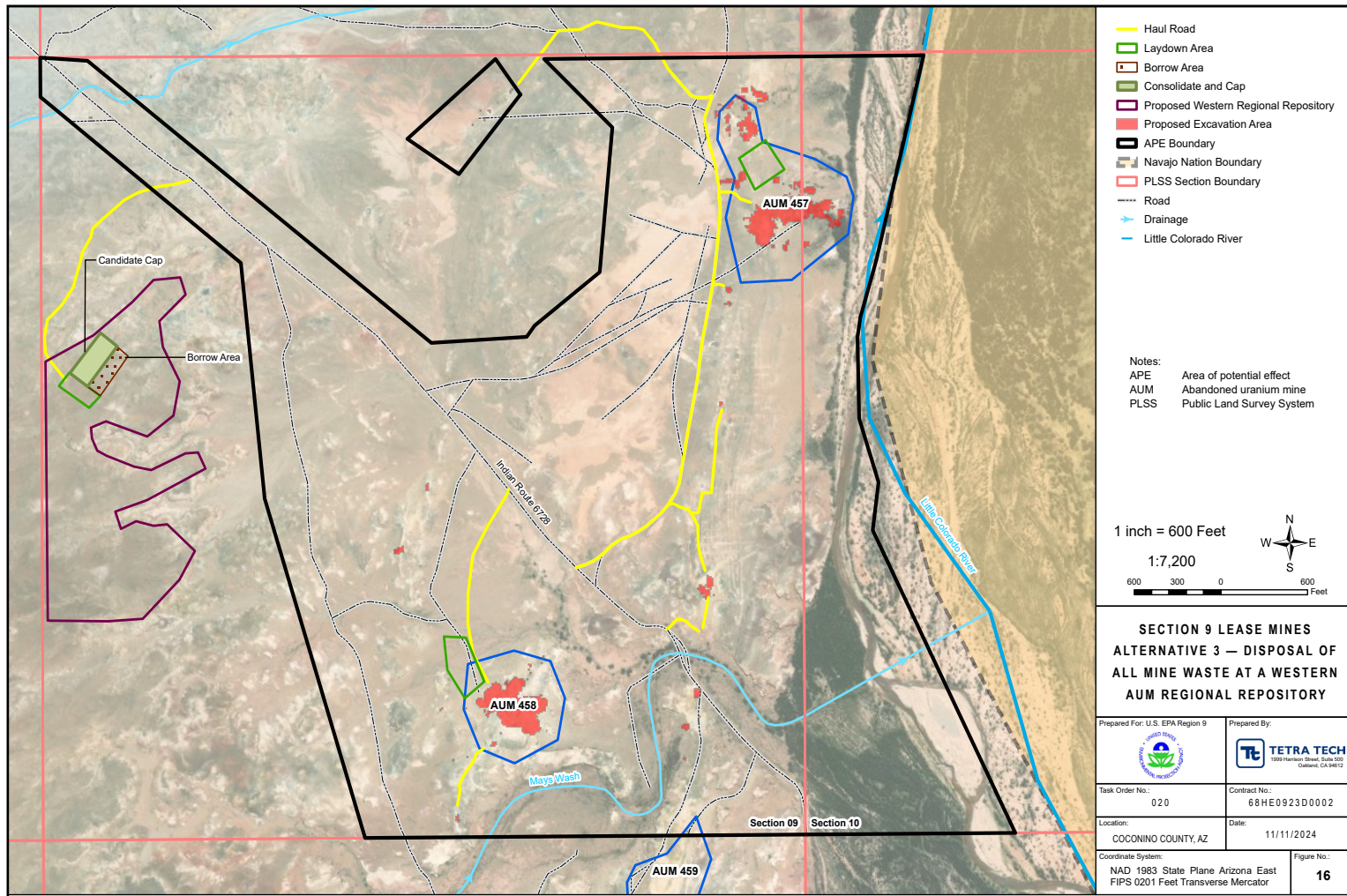
The United States Environmental Protection Agency (U.S. EPA) is asking for your feedback on the recommended cleanup alternative and haul route in the engineering evaluation/cost analysis (EE/CA) for the Section 9 Lease Mine Site. This fact sheet provides an overview of where we are in the cleanup process, considerations related to the recommended cleanup alternative of disposal at a repository located on Section 9, and a map of the proposed haul route and repository located on Section 9.

Where are we in the Cleanup Process?



Recommended EE/CA Alternative Details: Disposal of All Mine Waste at a Western Abandoned Uranium Mine (AUM) Regional Repository

Cleanup Details	Considerations
<ul style="list-style-type: none">The recommended action takes place on private land, off of Navajo Nation, and will move waste from its current location near the Little Colorado River to the Western side of Section 9, approximately 1 mile from the river.An estimated 14,711 cubic yards of waste from the AUMs would be consolidated and capped in the repository on Section 9.The repository design will include efforts to limit visual impacts by reducing height, grading and include contouring into existing terrain.An evapotransportive cover will be designed and will be constructed on top of the waste. The ET cover is designed to minimize water infiltration and leaching of contaminants, control erosion, control radon emissions, and prevent exposure to contaminants. Borrow and cover soil are expected to be selected from local, adjacent areas.Local soils and small rocks within the cap will be used to better blend in with the surrounding area.All excavation and construction areas will be tested to confirm cleanup goals are met.	<ul style="list-style-type: none">Once work begins, excavation and transport of waste on Section 9 can take up to 2 months and up to 630 truckloads.A haul route will be created connecting Indian Route 6728 to the repository. The haul route for removing waste from AUM457 and AUM458 is on Section 9 and does not pass through community areas.Land use for this area is limited as the area is located on private property that is deed restricted, and does not allow for residential, recreational or industrial development.The terrain where the repository will be located is flat with limited upgradient stormwater inflows, and no major drainage pathways through the repository area. Therefore, the repository location is ideal for the consolidation of Section 9 mine waste.



How Can You Learn More?

Estrella Armijo
Remedial Project Manager
U.S. EPA Region 9
(415) 972-3859
armijo.estrella@epa.gov

Priscilla Tom
Community Involvement
Coordinator
U.S. EPA Region 9
(505) 240-0093
tom.priscilla@epa.gov

For More Information on the EPA Region 9 Navajo Abandoned Uranium Mines Program, visit our Facebook page by scanning the QR code:



Where Can You Get Documents?

A copy of the EE/CA is available at the following locations:

- Online:
<https://www.epa.gov/navajo-nation-uranium-cleanup/administrative-records>
- Hard Copies:
Tuba City Public Library
78 Main Street
Tuba City, AZ 86045

Ways to provide input:

- During the November 23, 2024 Community Meeting
- Email to USEPA
- USPS Mail – Postcard
- Phone to USEPA