



Los Angeles Wildfires

Phase 1: Hazardous Material Removal

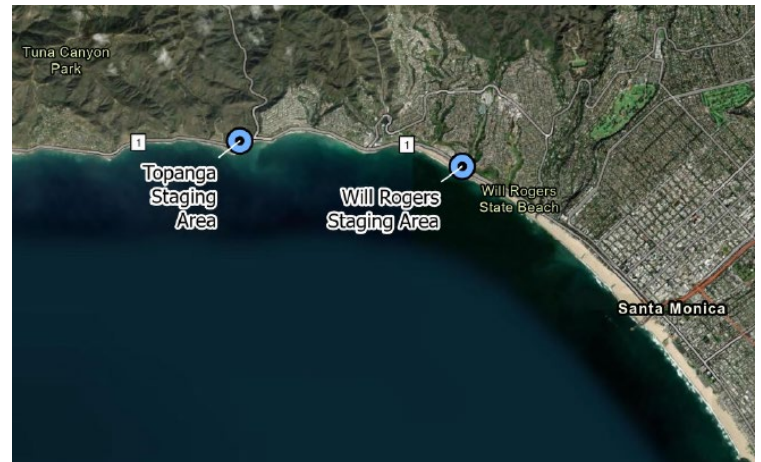
After fires, floods, and other large-scale disasters, common household chemicals and products can become potentially dangerous. In FEMA-led responses, EPA is assigned to **assess, secure, remove, and dispose** of these chemicals safely. This work requires specialized staff and equipment. The location where the collected materials are sorted and loaded for shipment is called a **staging area**.

Palisades Fire Staging Areas and Steps to Protect Health and the Environment

The EPA has two staging areas for the Palisades Fire, both properties are owned by California State Parks:

- Parking Lot 5 of the Will Rogers State Beach and
- Near the intersection of Pacific Coast Highway and Topanga Canyon Blvd.

Many **protective measures** are in place to protect the site from risks, such as spills or leaks. EPA uses trained hazardous materials professionals to assess, secure, remove, and dispose of the hazardous materials. Before using the staging areas, EPA sampled the soil to know what it was like before we got there.



The staging areas are **highly controlled**. The areas where we process materials are first:

- triple-lined with plastic, and
- equipped with spill control measures—such as wattles, booms, earthen berms, gravel and other items—to prevent anything leaving the processing area.

Additionally, both staging areas are:

- fenced, secured and lit, with 24-hour security every day;
- limited to EPA staff, EPA contractors, and partner agencies only; and
- closed to the public.

Both staging areas will sort and process HHM for shipment to appropriate disposal facilities. Hazardous materials include: paint, paint thinners, pool chemicals, oils, pesticides, cleaners, solvents and other items. Materials arrive at and leave the site in sealed containers.

The Will Rogers State Beach staging area will receive lithium-ion batteries from power walls, electric and hybrid vehicle batteries and other sources of these battery types.

Waste is packaged, sealed, and marked before it is transported out of the burned area. Sealed bags remain sealed throughout this process.

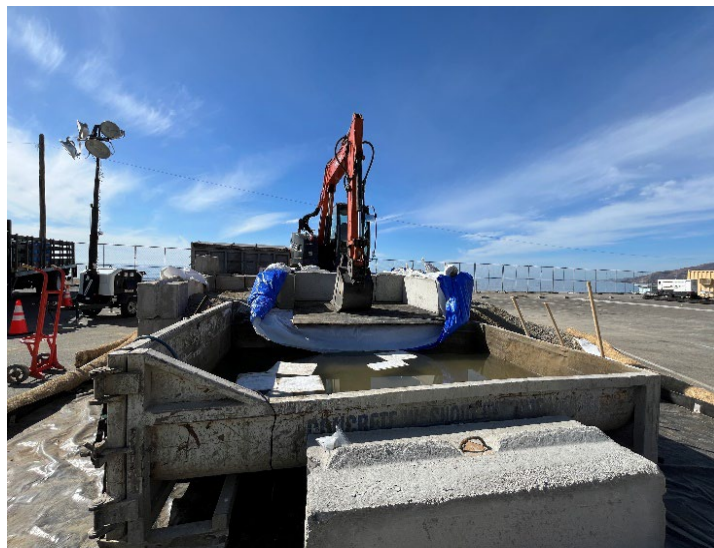


Photo of the lithium ion battery processing area at Will Rogers State Beach.

Trucks are secured and follow routes designed to minimize disturbances. Once at the staging area, materials are unloaded from trucks one package at a time by trained staff directly into a variety of lined containers. These containers are placed on several layers of protective material and not directly on the ground.

Materials are separated when collected to limit risk. Separated materials are sent to different disposal facilities. We require specialized containment methods to prevent any material dispersal during transit.

All transportation is planned by EPA to ensure household hazardous materials are highly contained and that we maximize safety while minimizing environmental risk.

Workers at the staging areas follow all applicable health and safety protocols and use personal protective equipment.

Around the entire staging area, we are:

- Doing continuous perimeter air monitoring for worker safety (24/7), and
- Spraying water throughout the day to suppress dust.

When Phase 1 is complete, we will sample the staging area again to verify the areas will be left as we found them.

epa.gov/california-wildfires

For questions about EPA's Phase 1 Household Hazardous Materials removal work, contact our hotline or email us:

**1-833-R9-USEPA
(1-833-798-7372)
EPALAWildfiresInfo@epa.gov**

