



---

U.S. ENVIRONMENTAL PROTECTION AGENCY

---

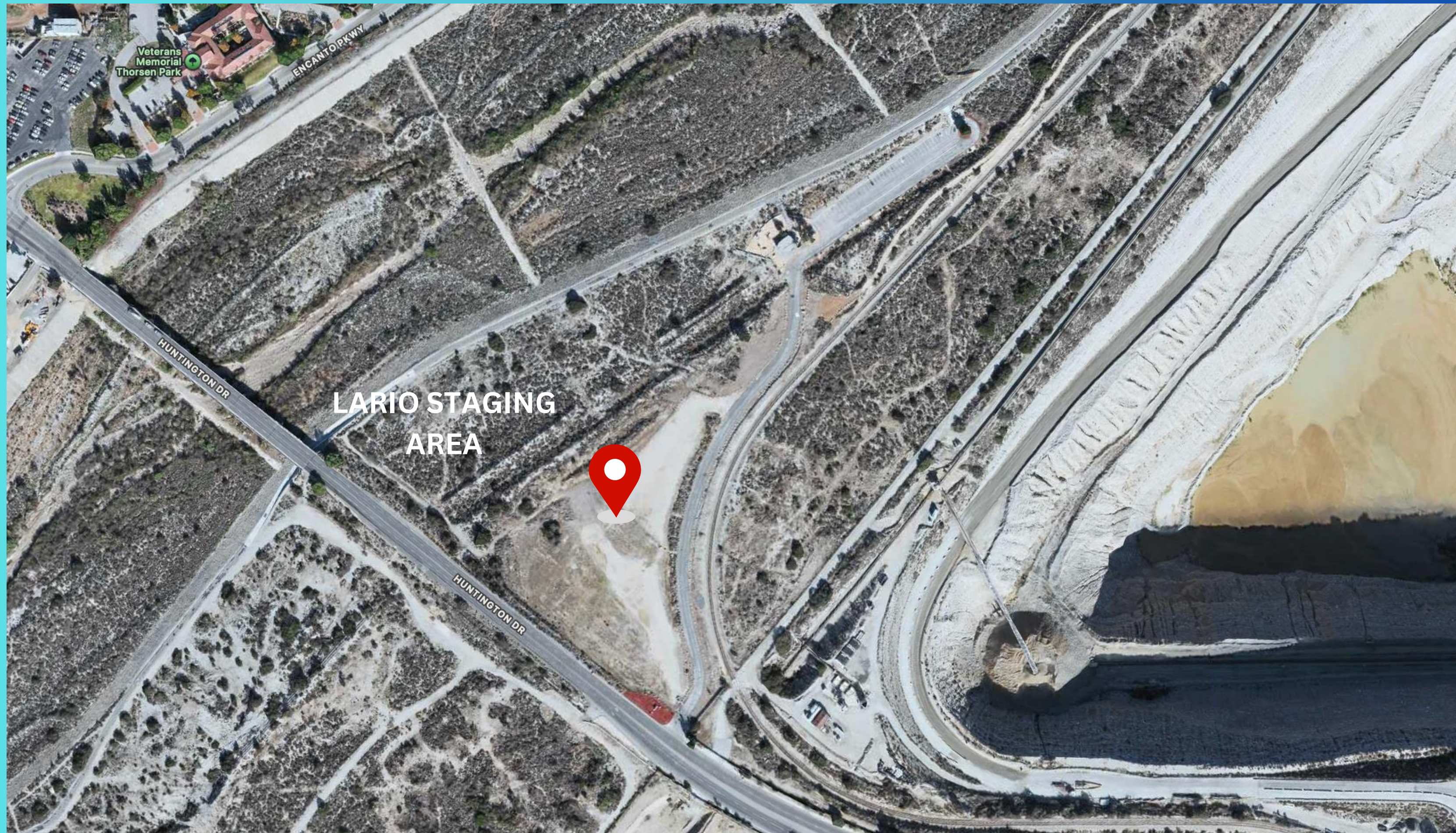
# HAZARDOUS HOUSEHOLD MATERIALS REMOVAL



---

February 3, 2025

[WWW.EPA.GOV/CALIFORNIA-WILDFIRES](http://WWW.EPA.GOV/CALIFORNIA-WILDFIRES)



# The cleanup process: Phase I and Phase II

## Phase I

U.S. Environmental Protection Agency

Household Hazardous Materials

Materials removed by hand

The first step in the recovery process

## Phase II

U. S. Army Corps of Engineers

Bulk debris, soil, ash

Materials removed with heavy equipment

Occurs after a property is Phase I complete

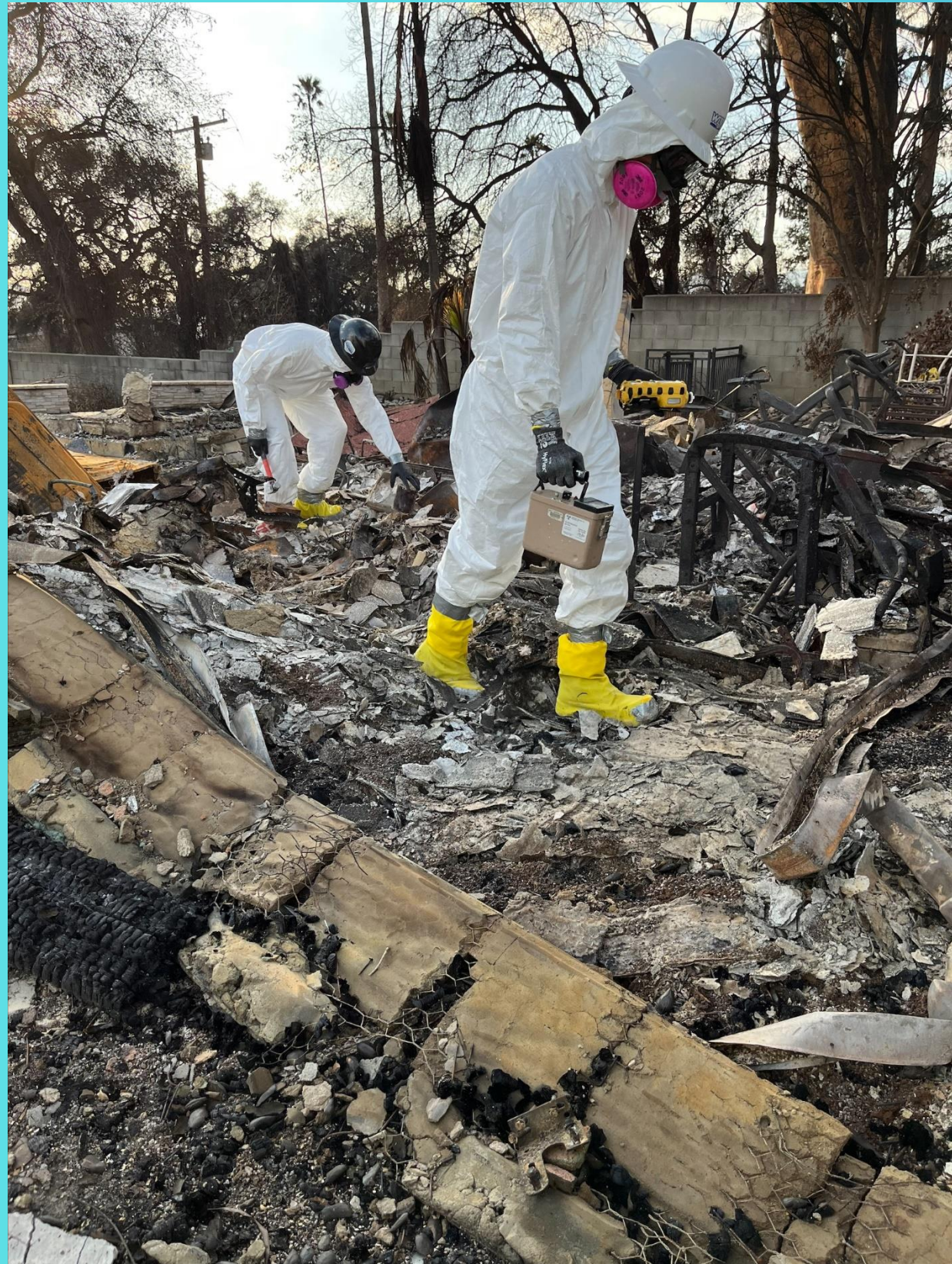
**Why was Lario  
Staging Area  
chosen?**

# What is EPA collecting?

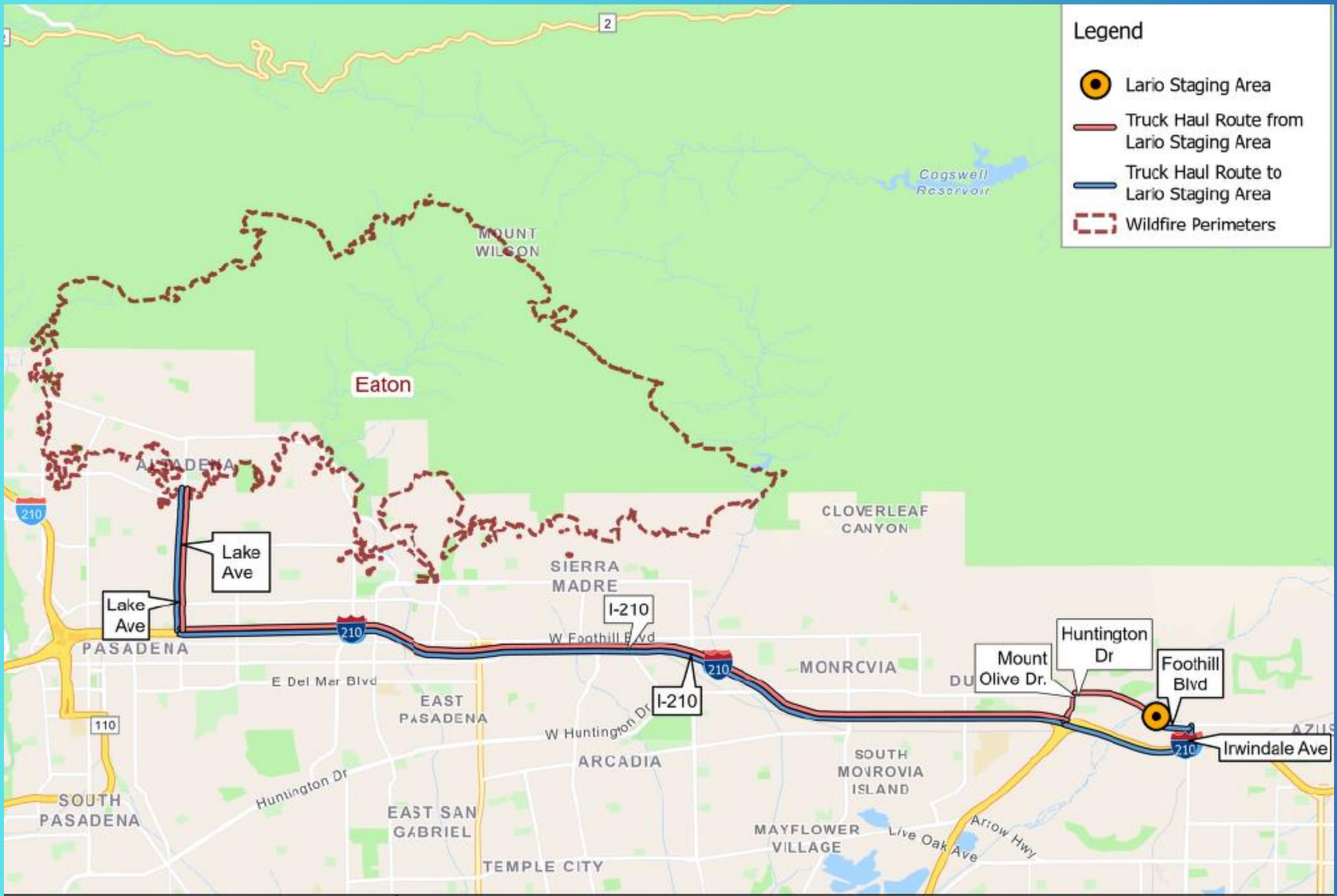
Small quantities of things commonly found in your home (sometimes called Household Hazardous Materials)

- Oils
- Paint
- Batteries
- Ammunition
- Cleaners and solvents
- Pesticides & herbicides
- Small amounts of visible asbestos













**Legend**

- Lario Staging Area
- Truck Haul Route from Lario Staging Area
- Truck Haul Route to Lario Staging Area
- Wildfire Perimeters

# Transportation Route

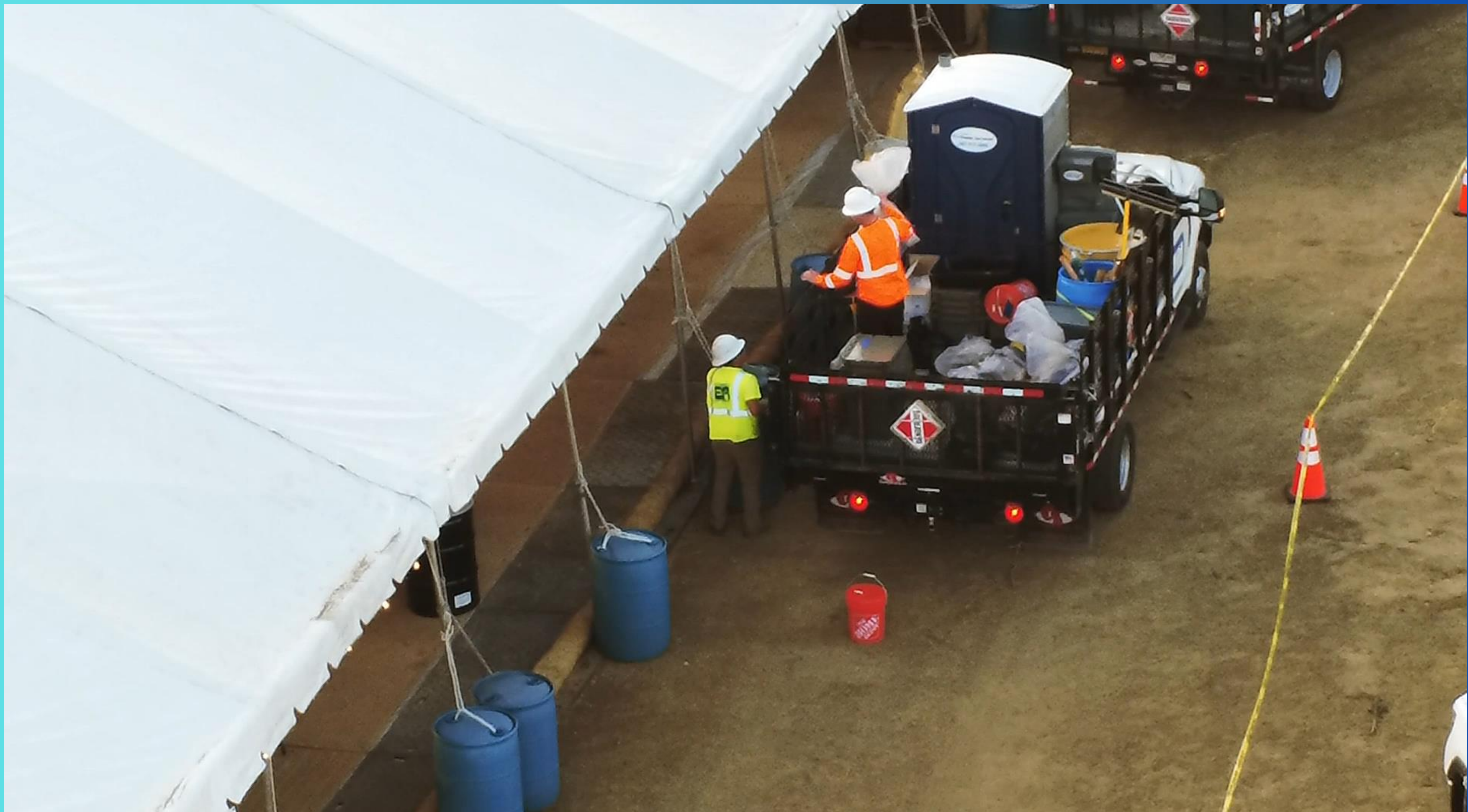
  <p>0 Miles 3</p>	<p><b>Contract:</b> 38HE0919F0078</p> <p><b>Task Order:</b> 38HE0919F0078-44</p> <p><b>JCN:</b> TBD</p>	<p><b>Prepared For</b> EPA Region 9 Emergency Response</p> <p><b>Prepared By</b> Weston Solutions, Inc. Long Beach, CA 90805 January 2025</p>  	<p><b>HHM Transportation Route to Lario Staging Area</b></p> <p>2025 Southern California Fires Emergency Response Los Angeles, CA</p>
---	---	---	---

# Separating Waste Streams













# Protecting Soil, Air & Water



# Air Monitoring



# Protective Barriers



# Dust Suppression



# Water Quality Protection





# Security & Fire Safety



24/7 armed security

# Close coordination with local fire and police



# Battery De- energizing & Decommissioning







# Community Involvement



# U.S. ENVIRONMENTAL PROTECTION AGENCY L.A. WILDFIRE EMERGENCY RESPONSE



EPA.GOV/CALIFORNIA-WILDFIRES  
EPALAWildfiresinfo@epa.gov

1-833-R9-USEPA  
(1-833-798-7372)