

SAN MATEO WASTEWATER TREATMENT PLANT UPGRADE AND EXPANSION PROJECT

BORROWERS: City of San Mateo (City) and Estero Municipal Improvement District (District)

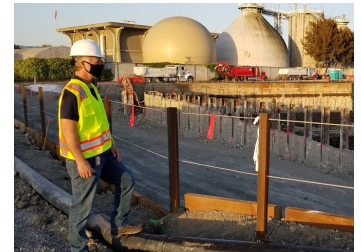
LOCATION: San Mateo and Foster City, California

WIFIA LOAN AMOUNTS: \$210.4 million (City), \$66.9 million (District)

TOTAL WIFIA PROJECT COSTS: \$566 million

POPULATION SERVED BY SYSTEM: 143,000 people

NUMBER OF JOBS CREATED: 1,810 jobs



San Mateo, California

PROJECT DESCRIPTION

Together, the City of San Mateo and the Estero Municipal Improvement District will rehabilitate their aging wastewater treatment plant to provide capacity for wet weather flows, produce higher quality effluent, enhance system reliability, and support sustainability goals. The project is designed to meet current and future regulatory requirements and provide future water reuse opportunities. The upgrade will include new treatment facilities to comply with National Pollutant Discharge Elimination System (NPDES) permit limits. It will also increase the system's capacity to manage wastewater during storms and help eliminate sanitary sewer overflows in the San Francisco Bay.

PROJECT AND FINANCING BENEFITS

- Repairs and rehabilitates the aging wastewater treatment plant.
- Reduces ammonia and nitrogen effluent concentrations.
- Reduces sewer overflows and unauthorized discharges in the San Francisco Bay.
- Loans closed in 2020 allow for deferred and sculpted repayments, saving the City of San Mateo an estimated \$43.5 million and the Estero Municipal Improvement District an estimated \$12 million from financing with a WIFIA loan.
- Loan amendments in 2024 (plus an amendment to a separate loan to San Mateo) change disbursement terms, saving an additional \$19 million over the life of the three loans.