

# BUILDING RESILIENCE TO STORMS

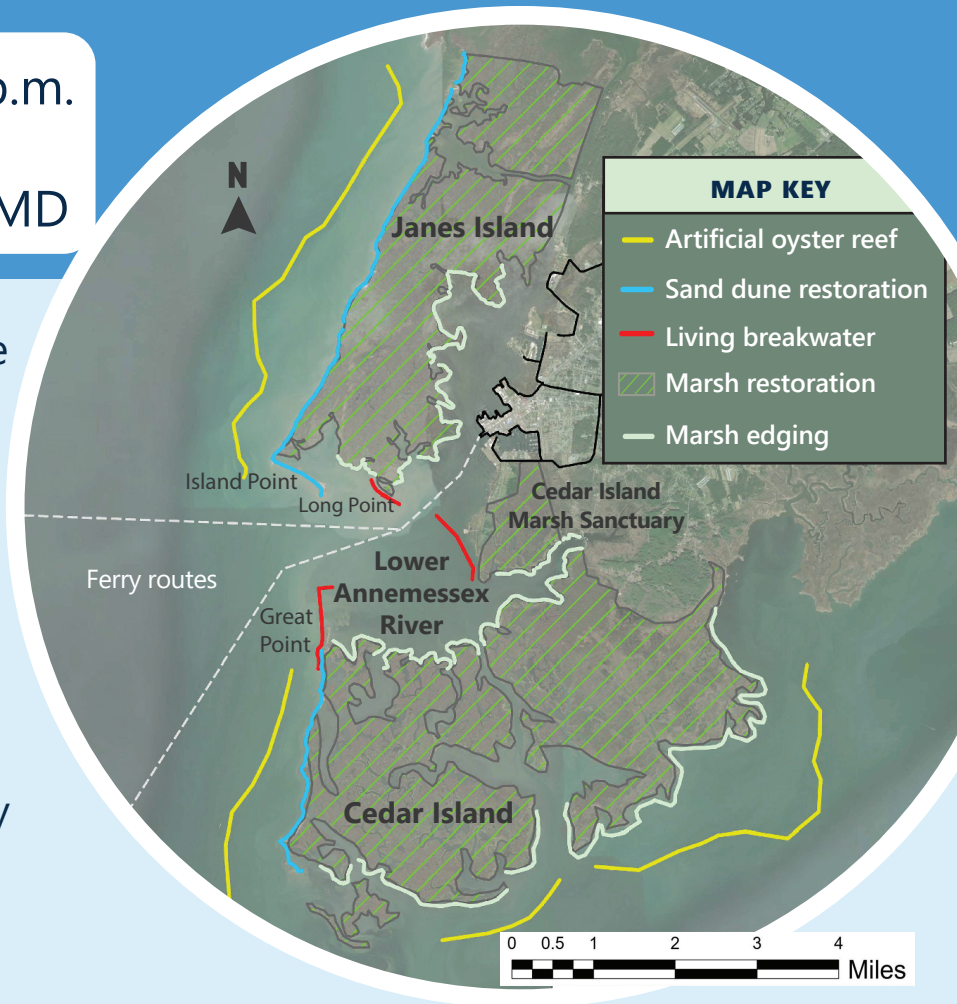
## Public Input Session

Thursday, June 12 | 5:30 p.m.  
Corbin Gallery  
4 East Main St., Crisfield, MD

Researchers are investigating the ability of natural infrastructure, such as marshes and living breakwaters, to protect Crisfield from the impact of storms.

### Join us!

- Learn about nature-based strategies
- Share feedback on preliminary research results
- Find out more ways to get involved



**Sign up here:**

[surveymonkey.com/r/FJMDH6L](https://surveymonkey.com/r/FJMDH6L)

***Can't attend but want to learn more?***

Keep track of updates and future sessions here:  
[epa.gov/water-research/coastal-community-resilience-research](https://epa.gov/water-research/coastal-community-resilience-research)



**Questions?**

Contact us at [beacon@salisbury.edu](mailto:beacon@salisbury.edu)