

CWA 104 on New Reservation Lands

Matthew Cogorno (Santa Ynez Band of Chumash Indians)



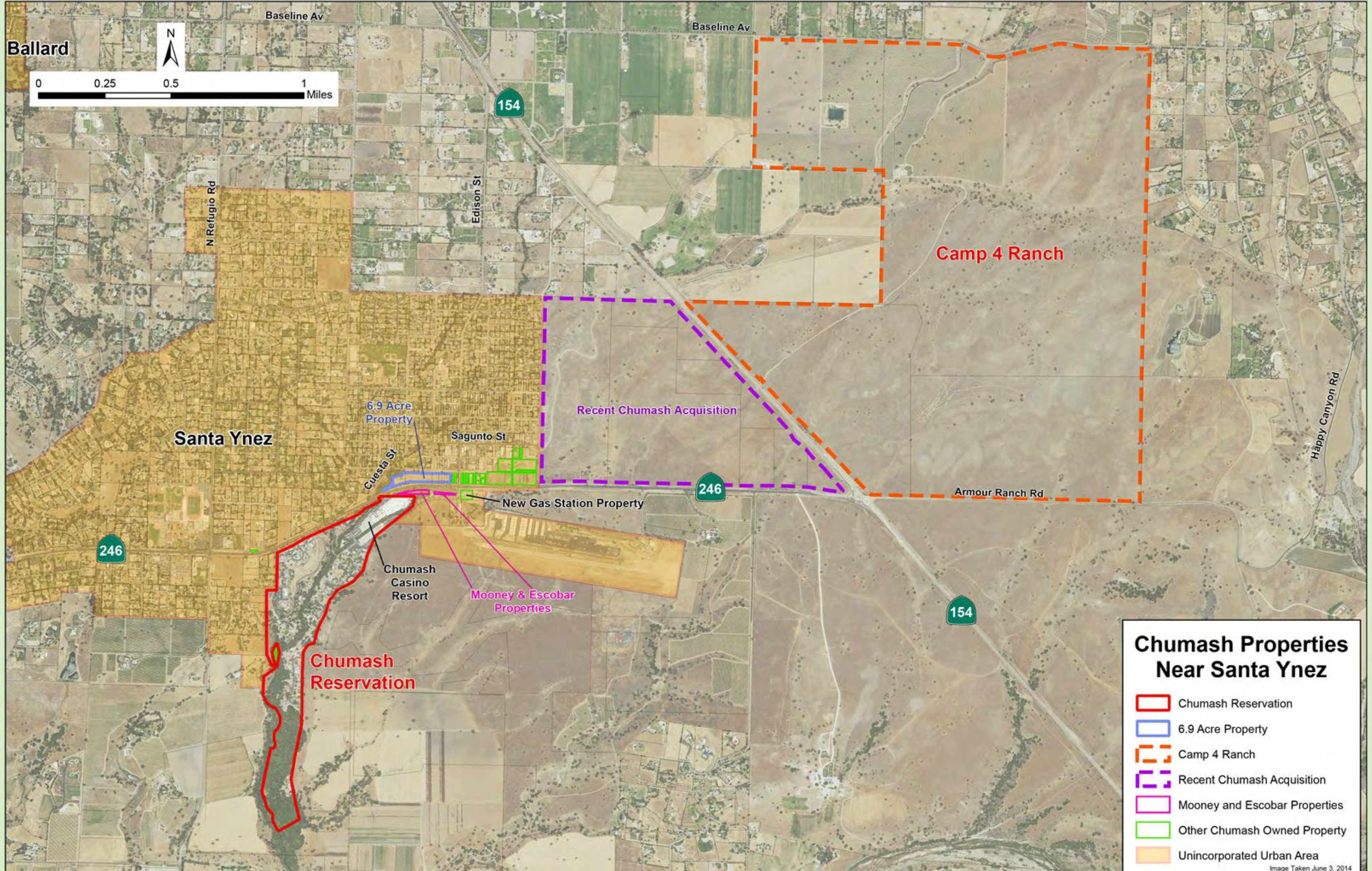
Matthew Cogorno

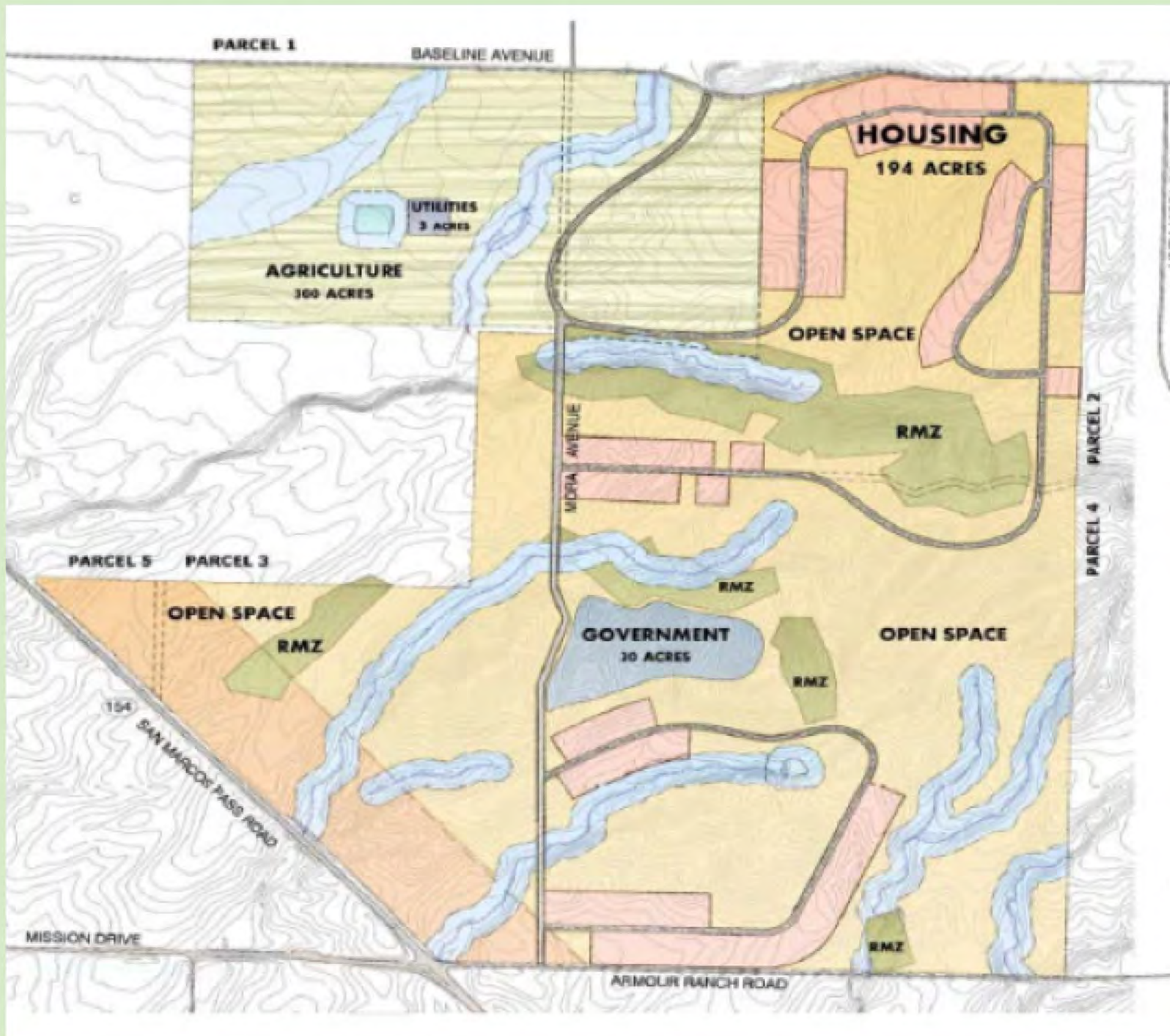
Environmental Specialist

- Programs
 - CWA 106
 - CWA 319
 - WPDG
- Assisting with
 - CARB Air Grant
 - EPA GAP
 - BOR Groundwater
 - USFWS TWG



**SANTA YNEZ CHUMASH
ENVIRONMENTAL OFFICE**





New Reservation Lands

- Put into trust in 2019 after long battle
- Mixed-use space
- 148 homes to be built
 - Along with utilities, roads, water treatment facility

Why get a WPDG Grant?

- Update Wetland Program Plan for new Reservation Lands
- Assess effects of development on Camp 4 Wetlands

Writing WPDG with Limited Capacity

- Consultants handle
 - WPP
 - QAPP
 - Geodatabase
- Chumash Environmental Office
 - Receive training
 - Education and outreach
 - CRAM/Field Assessments
 - Coordinate with Consultants

B.4 Milestone Schedule

Project Schedule		2023				2024			
		Q1	Q2	Q3	Q4	Q1	Q2	Q3	Q4
Task	<i>Notice to Proceed</i>								
1.1	<i>Build Knowledge Capacity</i>								
1.2	<i>Wetland Tracking Geodatabase</i>								
1.3	<i>Wetland CRAM Assessments</i>								
2	<i>Outreach Publications / Events</i>								
3	<i>Wetland Monitoring Plan</i>								
4.1	<i>Establish WPP Goals</i>								
4.2	<i>WPP Protection & Restoration Strategies</i>								
4.3	<i>WPP Prioritization Matrix</i>								
	<i>Publish Wetland Program Plan</i>								

CRAM Training





Building Knowledge Capacity

- Huge benefit of WPDG funding!
- Reduce future reliance on consultants

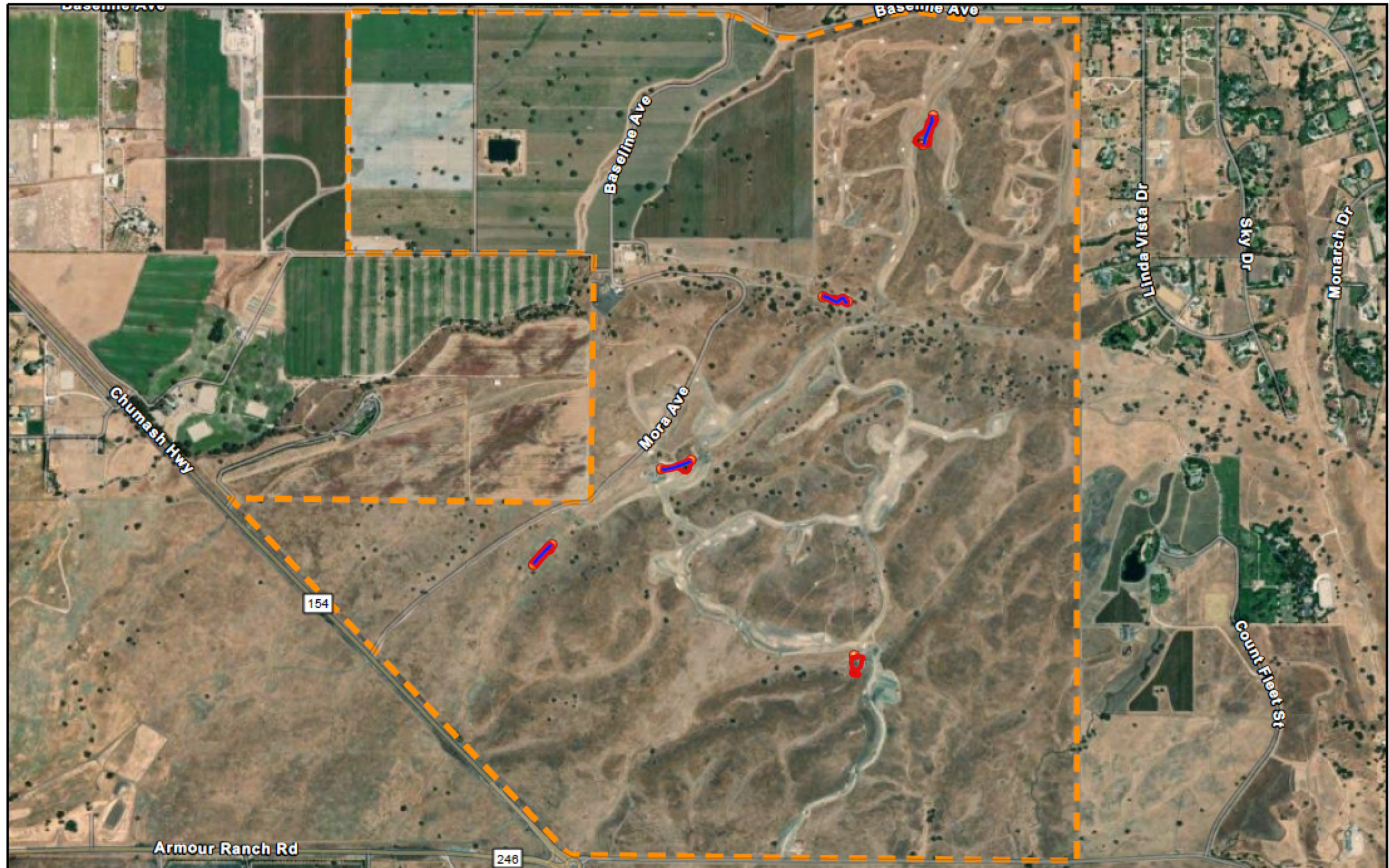




CRAM Assessments on Camp 4

- Initial Surveying of New Reservation Lands
- Determining Assessment Areas
 - Comparing areas of high development versus low development
- CRAM field assessments

Camp 4 Boundaries



What's the Point?

- **Quantify** effects of development on Camp 4
- Show degradation/need for restoration projects
 - Future grant funding
 - Internal Discussions





Things to Consider when Using a Consultant

- Determine your Tribe's capacity
 - If you can write your WPP, do it!
- Choose someone local
- Keep in touch

Thank you!
Questions?

