

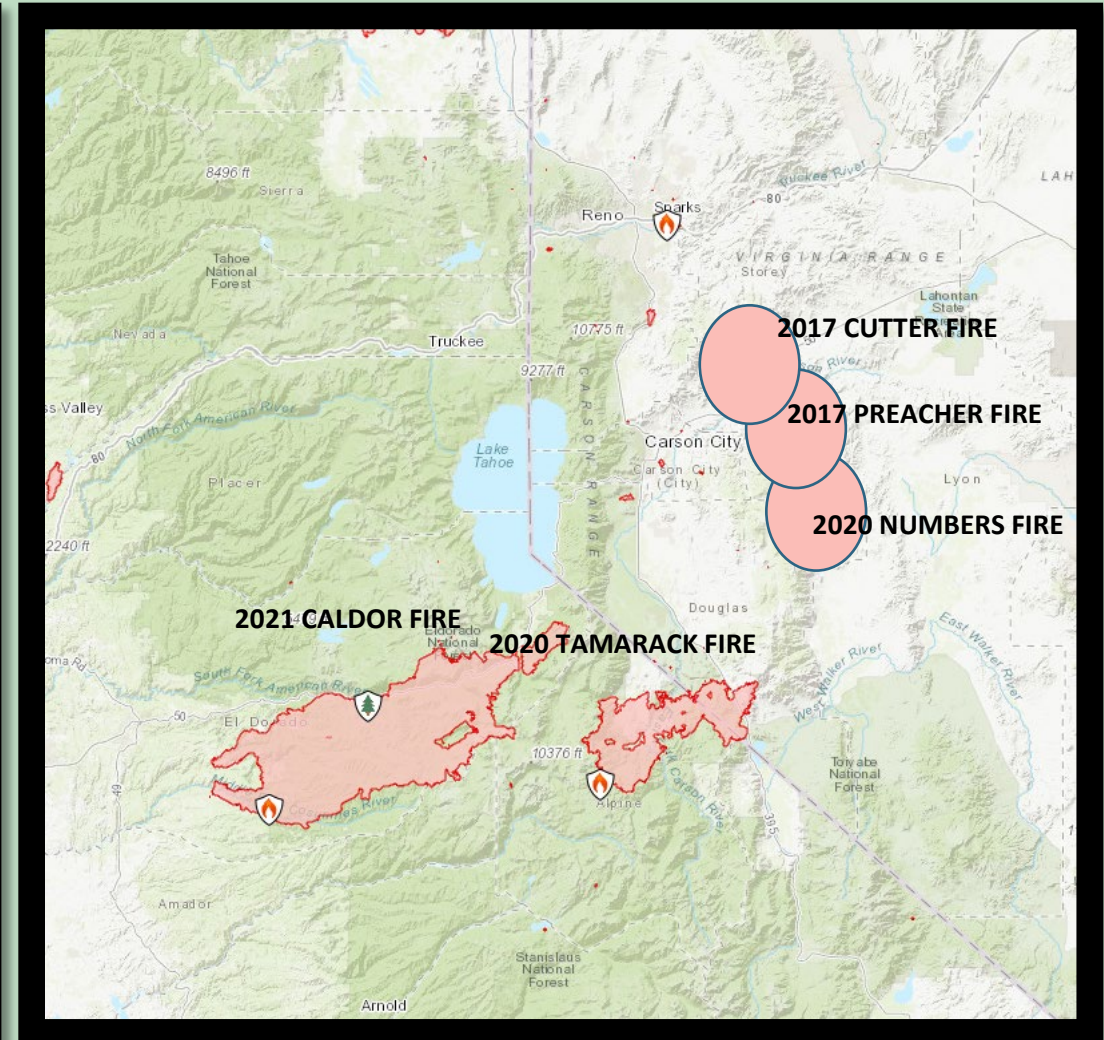
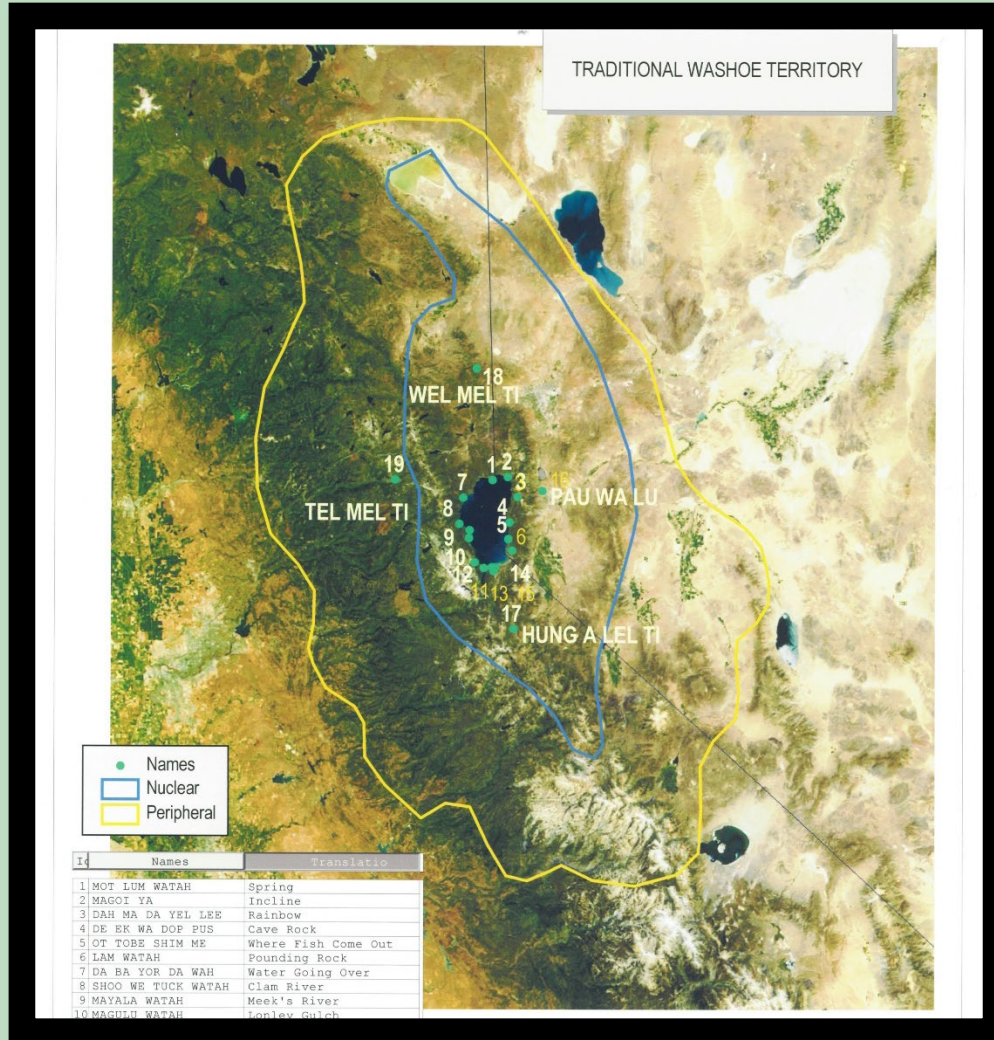


# Washoe Environmental Protection Department

Cale Pete, Environmental Manager



# Climate Resiliency in Washoe County

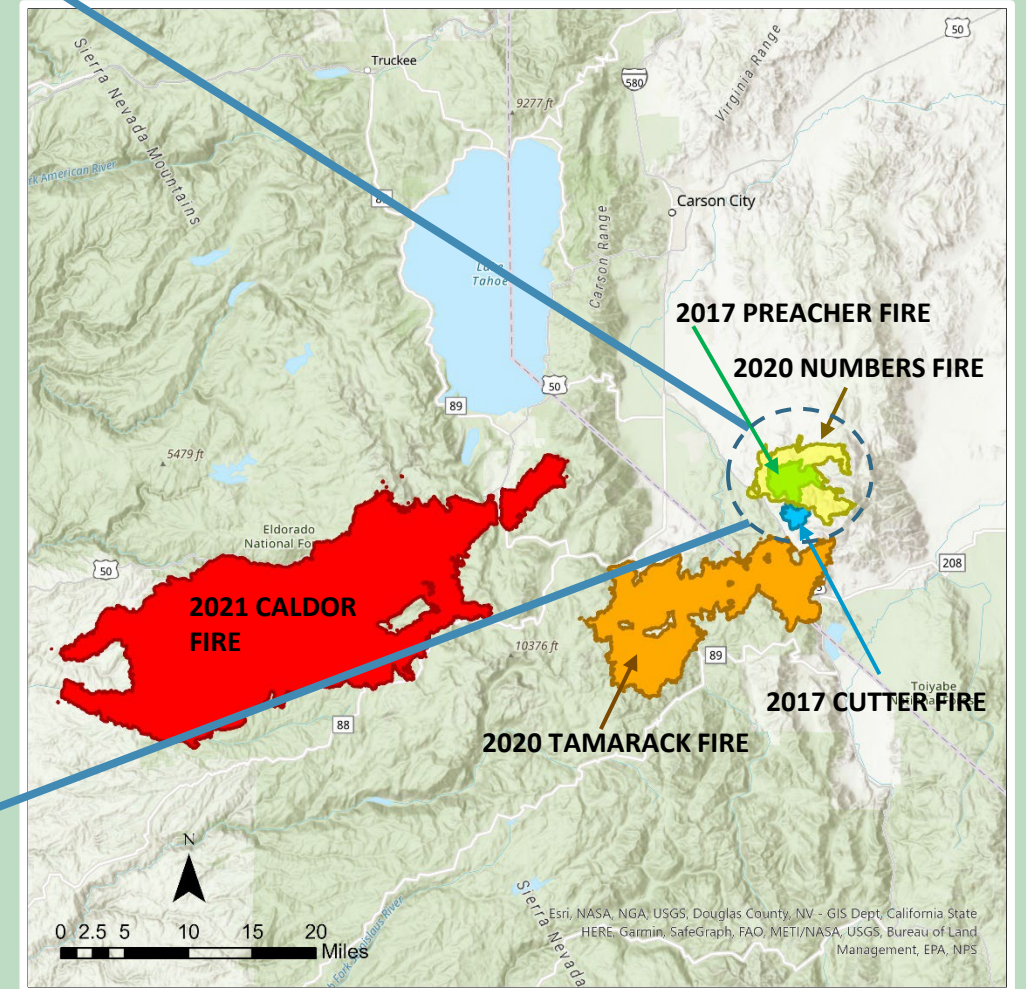


# Washoe Environmental Goals

- Post Fire Restoration Planting in burned areas
  - Aerial seeding, drill seeding, seedling planting
  - Washoe Resilience Garden to grow culturally significant and native plants for restoration planting
- Streambank Stabilization
  - Wattle installation
- Climate Resiliency Planning
  - Collaboration with environmental agencies on climate adaptation plan



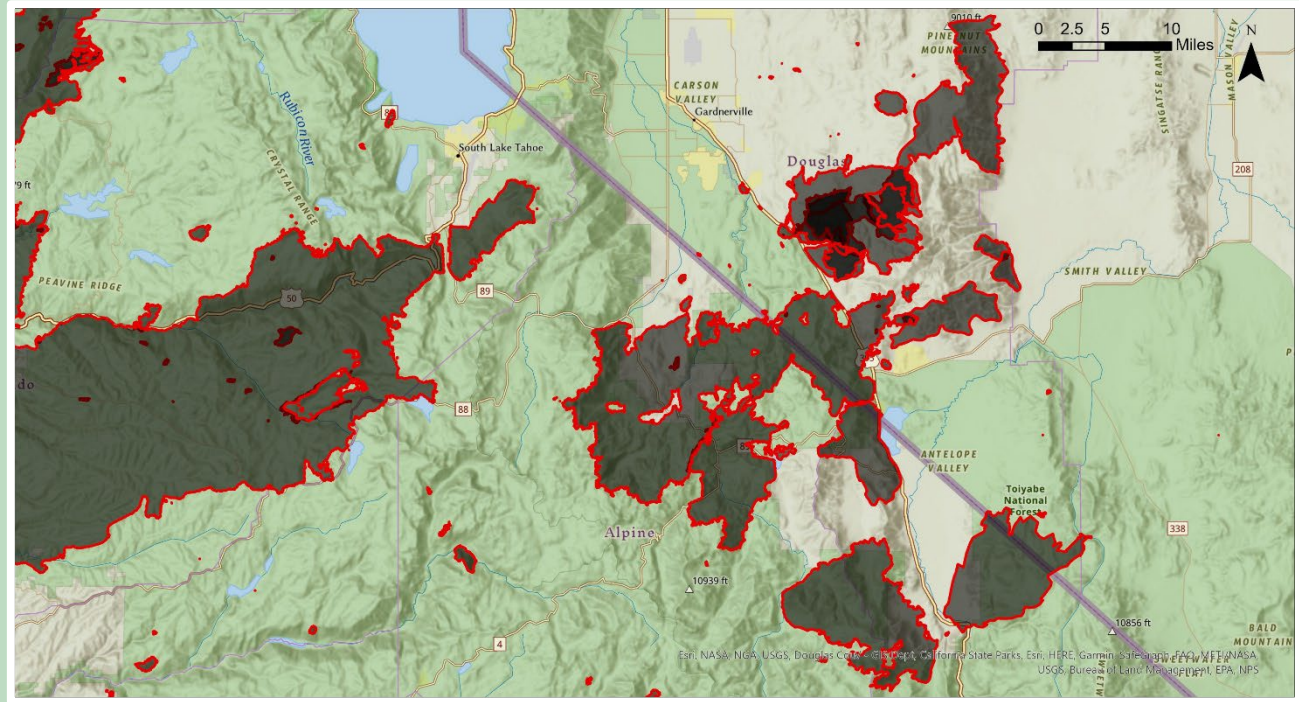
# Wildfire Restoration





# Fire Restoration: Cutter, Preacher, Numbers, Tamarack

The Washoe Tribes Ancestral Lands are devastated by wildfire every year with at least one if not two wildfires. Due to Climate Change, drought, forest management practices, and loss of habitat, we are losing our cultural resources such as pinyon pine, mule deer, pinyon jays, and cultural and medicinal plants. One of WEPDS main focus moving forward is conservation on Pinyon pine and the Pine Nut Range



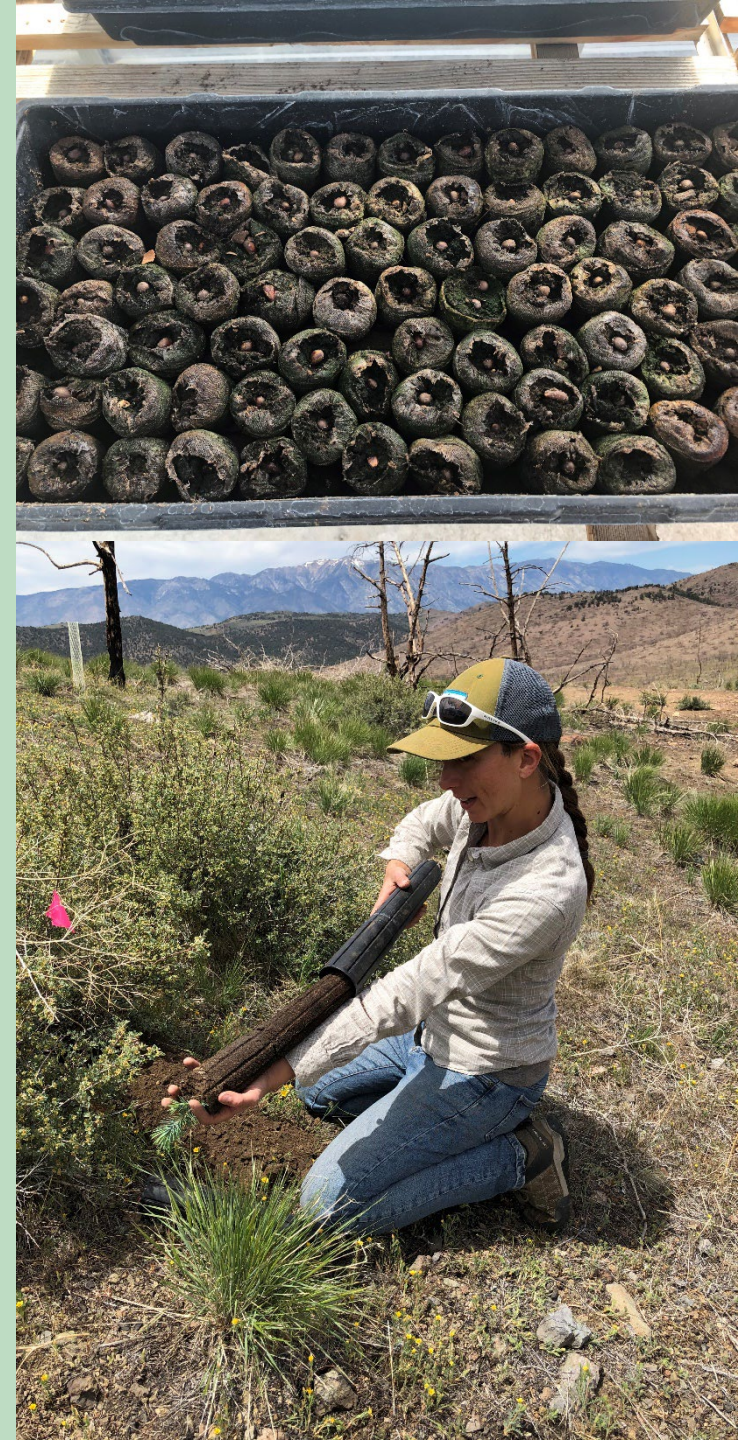


# Washoe Resilience Garden: Cultural and Native Plant Nursery

The Washoe Tribe and other environmental agencies have need for restoration plants. Pinyon pine (*Pinus monophylla*) is not available as a resource plant and there is great need to start preserving this cultural resource now.

## GOALS:

1. Growing native and cultural significant plants for restoration projects in Carson Valley and Tahoe Basin
2. Focus on Pinyon Pine conservation and wildlife habitat in the Pine Nut Range
3. Education and outreach for the community





# Post- fire Mitigation efforts



## **Streambank Stabilization**

Washoe owned lands have been ravaged by 12 wildfires in the past 10 years. As a result, the landscape has been left devoid of valuable habitat and vegetation. Sediment has been at the mercy of uncontrolled erosion.



## **Wattles**

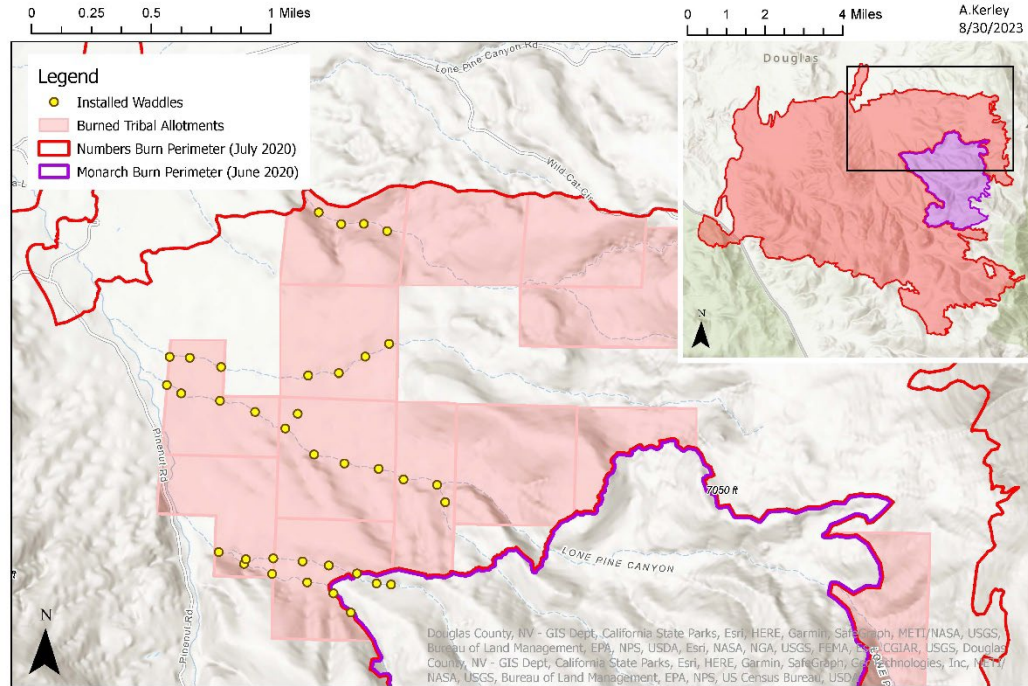
Wattles have been the first stage in a multistep reforestation strategy, they have been installed at key points along drainages and steep terrain in an effort to slow the rate of sediment dispersion into waterways and the loss of valuable top soil.



# 2023 Waddles Instillation in Numbers Burn Scar

Updated 9/11/23

WEPD  
A.Kerley  
8/30/2023



This data has been compiled on a geographic information system for the use of Washoe Tribe Environmental. The data does not represent survey delineation and should not be construed as a replacement for the authoritative source. The Washoe Tribe assumes no liability as to the sufficiency or accuracy of this data.





# 1. CLIMATE CHANGE AND WASHOE LANDS

This section describes downscaled climate projections for the project area—Washoe ancestral lands. Average annual precipitation, changes to snow pack and changes to the growing seasons are provided as the key precipitation measures for the mid- and end-of-century time-frames. Finally, wildfire risk to the region is summarized in terms of cumulative climate projections.

## Temperature



Across the Sierra Nevada Mountains and the Carson Valley regions, average annual temperatures are projected to increase across all time periods. Mid-century annual average temperatures are expected to increase more than five degrees Fahrenheit while temperatures at the end of the century could exceed an additional nine degrees Fahrenheit in the Carson Valley region.

## Precipitation



Average annual precipitation is projected to slightly increase by the end of the century throughout the region. Under the higher future scenario (RCP 8.5), average annual precipitation may increase about 10% in both the Sierra Nevada Mountains region (+ 9%) and the Carson Valley (+ 14%); however, there is a significant range of model results around these values.

## Wildfires



Wildfire risk to the region is projected to increase. Wildfires have already burned lands throughout the Pine Nut Mountains destroying critical natural resources, and threatening tribal homes, water, power lines, and other critical infrastructure. They have also burned hundreds of acres of land throughout the Pine Nut Mountains and the rest of the region.





# ʔuwaʔánawí !

Thank You!

