



NOTE: Information in this waiver may have been redacted or removed due to issues of proprietary business information or incompatibility with Federal accessibility requirements. To request the information redacted for purposes of accessibility requirements, please email

April 10, 2025

Aaron Tytschkowki – Environmental Engineer
Office of Water | CWSRF
U.S. Environmental Protection Agency

Subject: Request for Non-Availability Waiver
City of Ellsworth Street Project Project No. CWF 4170-11 SDW5283-11

Dear Mr. Tytschkowki:

This is a formal request for application for a non-availability waiver.

The project is a full street reconstruction project that includes full water and sewer replacement on Grant, Piety, Woodward, Strickland Streets in the City of Ellsworth Wisconsin. This project is proposed to be funded through the SDW and CWF loan program.

The contractor, [REDACTED], was unable to source AIS compliant storm water adaptor plates. They tried a couple suppliers but to no avail. We provided the spec and cut sheet submittals to EPA and you indicated that you were unable to find a AIS manufacturer. They need three 30" and eighty nine 24" Adaptor Plates.

Since construction began a few weeks and they will need a formal decision on the waiver, please complete your 15 day public review and provide a decision on the waiver.

Thank you for your assistance and timely response.

Sincerely,

Charlie Cameron, PE
Construction Management Engineer

cc: City of Ellsworth Wisconsin

[REDACTED]
Matt Marcum, Environmental Loans Program Manager – CF/2

Attachments

NOTE:

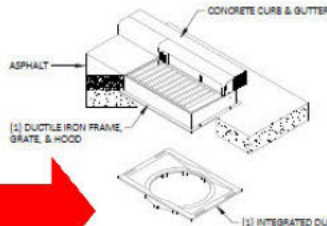
CASTING MAY VARY FROM DETAIL. SEE PLANS FOR CASTING REQUIREMENTS

(4) COMBINED DUCTILE IRON GRATE AND FRAME PROVIDED BY HARD FITTINGS TO ENSURE PROPER FIT OF CASTING ON DRAINAGE STRUCTURE

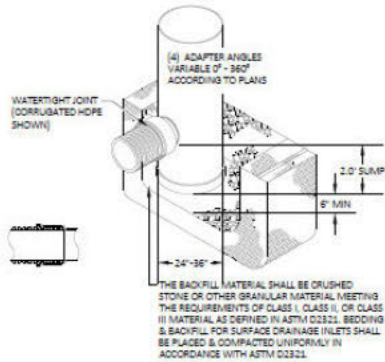


A CONCRETE COLLAR IS REQUIRED TO BE POURED AROUND AND UNDER DUCTILE IRON FRAME AND GRATE FOR ALL TRAFFIC LOAD APPLICATIONS. THIS DRAWING REFLECTS MIN CONCRETE COLLAR DIMENSIONS RECOMMENDED. LOCAL PROJECT CONDITIONS AND REQUIREMENTS SHOULD ALWAYS BE CONSIDERED IN THE CONCRETE COLLAR DESIGN

AREA DRAIN GRATE W/ CONCRETE COLLAR

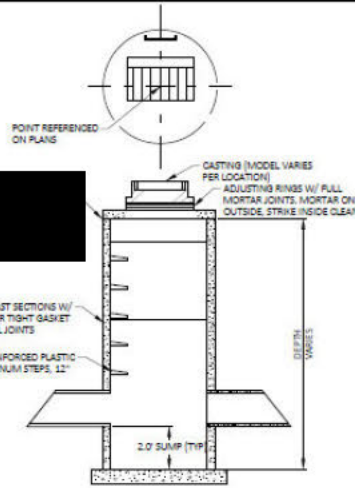


CURB INLET



TYPICAL PVC CATCH BASIN

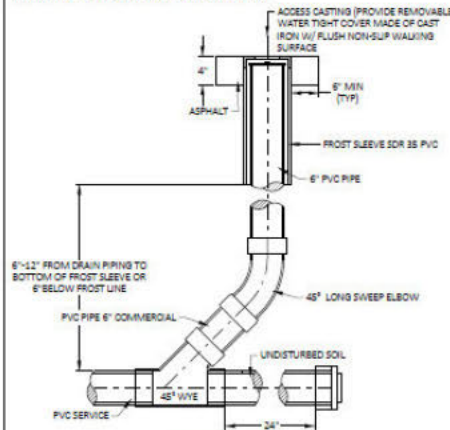
THE BACKFILL MATERIAL SHALL BE CRUSHED STONE OR OTHER GRANULAR MATERIAL MEETING THE REQUIREMENTS OF CLASS I, CLASS II, OR CLASS III MATERIAL AS DERIVED IN ASTM D2321. BEDDING & BACKFILL FOR SURFACE DRAINAGE INLETS SHALL BE PLACED & COMPACTED UNIFORMLY IN ACCORDANCE WITH ASTM D2321.



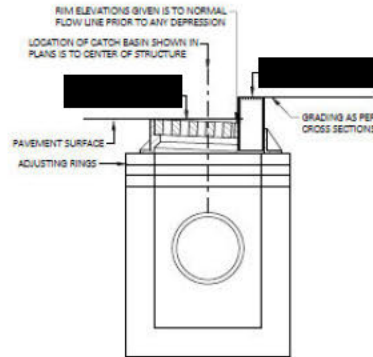
TYPICAL CONCRETE CATCH BASIN

NOTES:

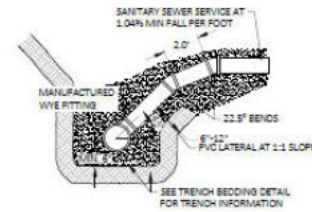
1. ALL PIPE SHALL BE SDR35 W/ GASKETED JOINTS.



EXTERIOR SANITARY SEWER SERVICE CLEANOUT



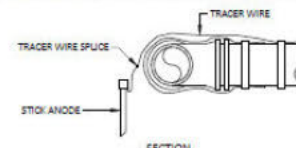
TYPICAL INLET WITH CASTING



SANITARY RISER

NOTE:

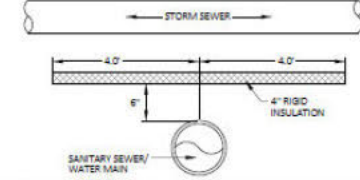
1. PROVIDE TRACER WIRE GROUND CONNECTION AT ALL TO EXISTING PIPELINES WITHOUT EXISTING TRACER WIRE UNLESS OTHERWISE NOTED.



TRACER WIRE GROUND CONNECTION

NOTE:

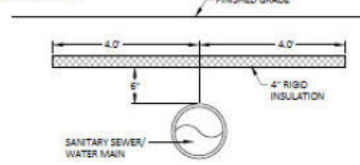
1. UTILIZE INSULATION DETAIL WHERE THERE IS LESS THAN OR EQUAL TO 48" OF VERTICAL SEPARATION BETWEEN STORM SEWER AND SANITARY SEWER/ WATER MAIN.



SANITARY SEWER AND WATER MAIN INSULATION AT STORM SEWER

NOTE:

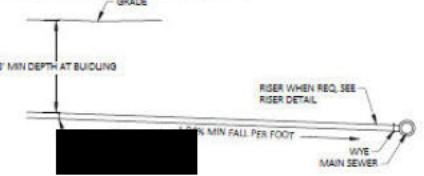
1. UTILIZE INSULATION DETAIL WHEREVER PIPE COVER IS LESS THAN 8.0'. (OR NOTED OTHERWISE)



SANITARY SEWER AND WATER MAIN INSULATION DETAIL

NOTE:

1. PROVIDE TRACER WIRE ON SANITARY LATERAL.



TYPICAL SANITARY SERVICE

**GRANT AND PIETY
STREET IMPROVEMENTS
ELLSWORTH, WI**

CONSTRUCTION DETAILS

