

EPA Brownfields and Land Revitalization Nationwide Technical Assistance Programs



July 23rd, 2025

Meeting Logistics

- **Call-in Options**

- Call-in Number: +1 646 828 7666
- Webinar ID: 160 616 2385

- **Questions**

- Please submit questions in the Q&A feature at the bottom of your screen

- **Use of Artificial Intelligence (AI)**

- EPA does not provide, nor review, an AI-generated summary of this webinar
- EPA does not use AI bots to summarize and distribute webinar summaries to the public
- Any AI-generated summary tools you choose to use may not accurately capture the webinar materials

EPA's Office of Brownfields and Land Revitalization Technical Assistance Opportunities



Nationwide Technical Assistance Providers

- Serve communities across States, Tribes, and Territories in the U.S.
- Provide specialized technical assistance
 - Providers:
 - **Kansas State University (KSU) – Tribal Nations** (May 2024 – April 2029)
 - **Groundwork USA – Nonprofits** (October 2023 – September 2028)
 - **The Center for Community Progress – Land Banks** (August 2023 - July 2027)
 - **UMass Dartmouth – Minimizing Displacement** (November 2023 – October 2027)
 - **Grow America – RLF** (August 2024 - September 2029)
 - **Tetra Tech/Adaapta – Job Training** (July 2025 - July 2030)





Community building with the Tribal Technical Assistance to Brownfields (Tribal TAB) Program

ksutab.org/tribaltab

Presented by oral saulters

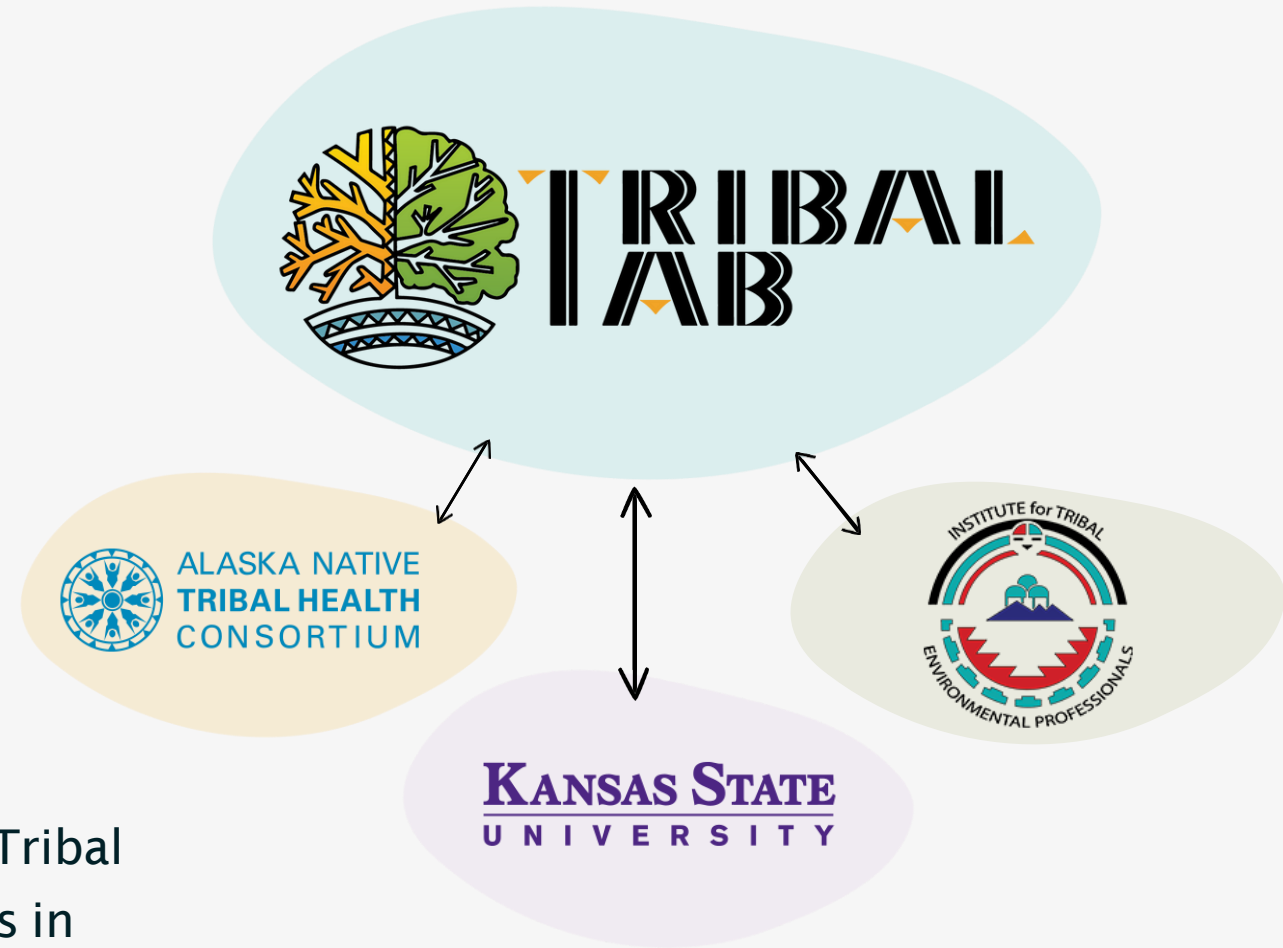
WHO WE ARE

Tribal TAB is a core collaborative partnership between:

- Kansas State University (KSU)
- Alaska Native Tribal Health Consortium (ANTHC)
- Northern Arizona University's Institute for Tribal Environmental Professionals (ITEP)
- *Plus A Network of Universities, Intratribal, Cultural Specialists, SMEs, etc.*

Our Mission

The Tribal Technical Assistance to Brownfields (Tribal TAB) program supports Indigenous communities in protecting and restoring sacred lands.



WHO WE SUPPORT



SCOPE AND FOCUS

Tribal TAB has an expansive and ever-growing network of partners who provide expertise on a variety of topics and in a variety of ways.

Our Partners include:

- Indigenous Design and Planning
- Indigenous-focused Engineering and Environmental Consulting
- Tribal Response Program Experts
- Renewable Energy
- Tribal Financing
- Nature-based Solutions
- Storytelling: Filmmaking & Podcasting

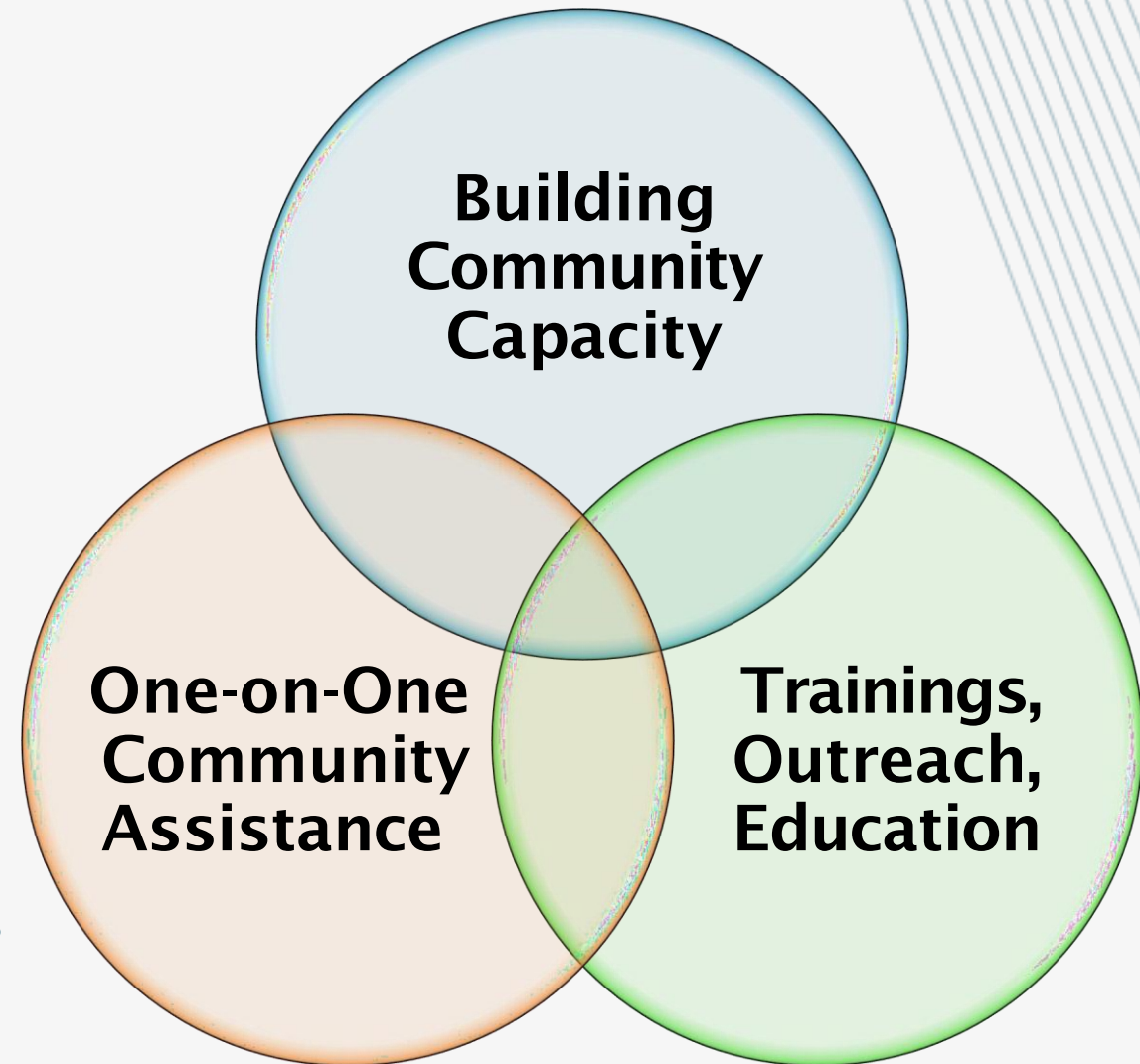


WHAT WE DO

The Tribal TAB network provides free technical assistance to all federally recognized Tribal Nations, Alaska Native Villages, and other Tribal entities.

How We Can Assist

- Provide help identifying & prioritizing brownfields
- Connect peer learning and mentoring
- Tribal Response Program resources
- Tribal Brownfields Knowledge Circle
- Identify potential funding
- Brownfields for renewable energy & energy sovereignty
- Incorporate culture & tradition in brownfields efforts
- Planning & redevelopment visioning
- Review of technical documents
- And much, much more



TRIBAL BROWNFIELDS KNOWLEDGE CIRCLE

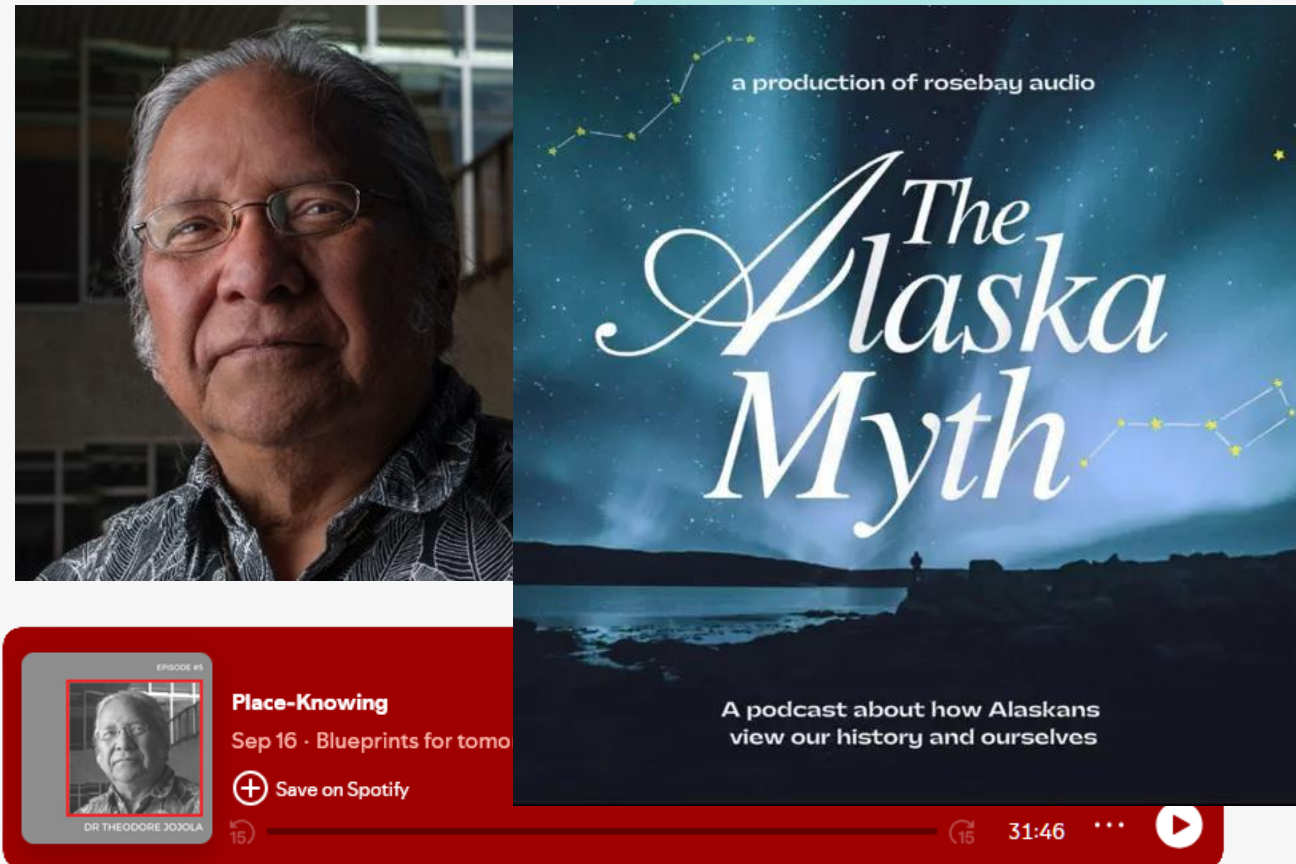
- Co-creation of a safe space where professionals, friends, and peers can come together to listen, share, learn, and support one another on topics surrounding Indigenous lands, brownfields revitalization, healthy communities, cultural resilience, and more.
- Quarterly Gatherings
- Monthly *In A Good Way* coffee chats



“Hold on to what is good, even if it’s a handful of earth; hold on to what you believe, even if it’s a tree that stands by itself; hold on to what you must do, even if it’s a long way from here.”

- Crowfoot

ART OF STORYTELLING



- **PlaceKnowing** with Dr. Ted Jojola and University of New Mexico (UNM) Indigenous Design + Planning Institute (iD+Pi)
- Highlights Tribal TAB community assistance in Navajo Nation community of Round Rock, Arizona; Golovin, Alaska; Gold King Mine spill
- **Alaska Native Claims Settlement Act** with Rosebay Audio (Kaitlin Armstrong) and ANTHC
- Tells the complex story of this pivotal law including history, communities, voices, and cultural implications

ONE-ON-ONE COMMUNITY ASSISTANCE

Building and/or Enhancing a Tribal Response Program

- Individualized assistance
- Online TRP Training Resources

PLACES Community-Informed Placemaking

- Community-informed public engagement for reuse/restoration
- Planning methodologies considered through an Indigenous lens

Grant writing, assessments, reviewing technical documents, and other assistance



TRP is intended to address:

Brownfields, big & small, and other sites - past, present, and future



ONE-ON-ONE COMMUNITY ASSISTANCE

Cheyenne & Arapaho Tribes



- Concho Indian Boarding School
- *Restoring Néške'emāne*



ALASKA-SPECIFIC WORK

ONE-ON-ONE COMMUNITY ASSISTANCE

Golovin, Alaska

What could the Fish Plant site be?

This graphic rendering of the site shares how some of the interventions like a dune/berm restoration, Inuksuk, and trail signage could be incorporated into the landscape. While the changes shown are subtle, the ideas aim to maximize the reuse of both existing materials from the Fish Processing Plant and potential dredge material if the boat harbor project moves forward.

With the buildings removed and the site cleaned up, a larger dune/berm could be created and planted with native grasses to buffer the town from the ebb tide of storm surge events. Nestled into this feature, a sculptural element at the Fish Plant site could serve as a landmark at the site of the former buildings, guiding travelers across Golovin Lagoon.

Inuksuk Monument

Monument could be created at the site of the former Fish Processing Plant and utilize materials from the buildings such as steel and concrete

Restored Dune/Berm

To protect the future boat harbor and Downtown Golovin, a restored dune/berm could deflect the energy from ebb tides during storm surge events while also restoring critical shorebird nesting habitat

Boat Harbor

Quarried area could be opened to provide access into Golovin Lagoon, becoming a seasonal boat harbor for larger trawlers

Iditarod Trail Marker 965

18 miles to White Mountain
95 miles to Nome





Thank you!

We hope to hear from you.

Oral Saulters
Tribal TAB Co-Director

osaulter@ksu.edu
785.280.0931

Jennifer Clancey
Tribal TAB Co-Director

jmclancey@ksu.edu
319.270.3394

Let's Connect!

Scan to get in touch with a Tribal TAB member or to join our mailing list





Groundwork USA's National Technical Assistance for Nonprofits

July 23, 2025

Jalisa Gilmore, Senior Manager of Health and Land Use Programs





Groundwork USA

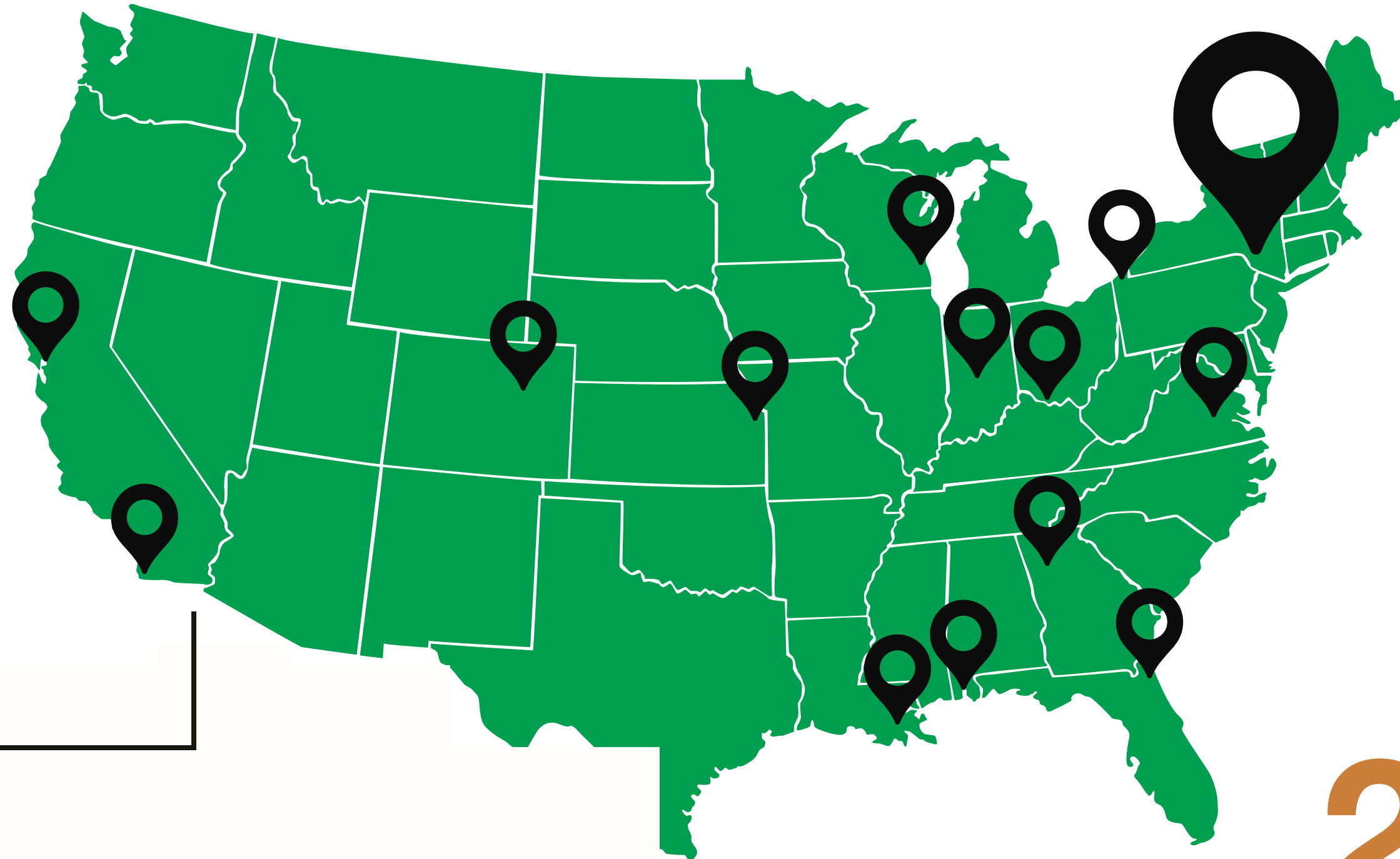
Groundwork USA is a national nonprofit that supports and strengthens grassroots efforts to build healthier, more resilient neighborhoods. We do this by working deeply with our network of place-based affiliates and by facilitating national peer-to-peer learning, technical assistance, and grantmaking programs for community-centered organizations nationwide.

Groundwork Network

The Groundwork Network is a national network of community-centered nonprofits working at the intersection of people, places, and systems to build healthier, more resilient neighborhoods

Meet the Groundwork Network

Groundwork Elizabeth, NJ
Groundwork Hudson Valley, NY
Groundwork Buffalo, NY
Groundwork Bridgeport, CT
Groundwork Lawrence, MA
Groundwork Somerville, MA
Groundwork Southcoast, MA
Groundwork Rhode Island



Groundwork Atlanta, GA
Groundwork Denver, CO
Groundwork Indianapolis, IN
Groundwork Jacksonville, FL
Groundwork Milwaukee, WI
Groundwork Mobile County, AL
Groundwork New Orleans, LA
Groundwork Northeast
Revitalization Group, KS
Groundwork Ohio River Valley, OH
Groundwork Richmond, CA
Groundwork Richmond, VA
Groundwork San Diego-Chollas
Creek, CA

21 Groundwork Affiliates across 17 states, from coast to coast



Groundwork USA

What we do

- Transforming neglected land and waterways into community assets
- Increase resilience to extreme weather and environmental crises
- Increase access to healthy food
- Cultivate the next generation of environmental leaders

National Technical Assistance

NONPROFIT BROWNFIELDS TECHNICAL ASSISTANCE

Increase the capacity of **non-profits to lead brownfield and land reuse efforts**, with a strong emphasis on community-centered engagement

Support communities to transform underutilized spaces into parks, trails, urban farms, and other community assets.

Funded by the EPA from 2023-2028



**Direct Technical
Assistance**

**Webinars &
Workshops**

**Community
Resource Hub**

National Technical Assistance

THROUGH OUR PROGRAM, WE HELP NONPROFITS

- Design and Plan Community-Driven Brownfield Projects
- Better Understand Brownfields Reuse
- Integrate Data, Storytelling, and Community Insights
- Build Partnerships and Inclusive Engagement Strategies
- Manage Brownfield Risks and Challenges
- Navigate The Funding Landscape





01

LAND REUSE LEARNING COHORTS

In-depth learning and support, to guide nonprofits through the development of a comprehensive, equity-centered land reuse strategy.

02

COMMUNITY OF PRACTICE

Community of practice which will provide facilitated peer-to-peer networking, convenings, webinars, workshops, and digital engagement

03

TECHNICAL ASSISTANCE (1:1)

Nationwide technical assistance to non-profits with discrete needs



Nonprofit Land Use Learning Cohort!

FREE six-month virtual program designed to help nonprofit organizations effectively lead brownfield site reuse projects.

- **What we are looking for!**

- Individuals representing nonprofits or community organizations
- Participate in 6 small group workshops from over 6 months

- **Participants will:**

- Explore Real-World Tools and Case Studies
- Create An Actionable Strategy
- Receive Personalized Coaching
- Build a Community of Peers

**Apply
by Aug
15!**



WEBINARS & WORKSHOPS SERIES



BROWNFIELD-CURIOUS WEBINAR SERIES

Three-part series for nonprofits that are curious about engaging in brownfield revitalization.

NONPROFIT SPEAKER SERIES

Feature a diverse group of nonprofits that have successfully completed brownfield revitalization projects

SKILL-FOCUSED WORKSHOPS

Topic-specific training workshops focused on integrating best practices into brownfield reuse

COMMUNITY RESOURCE HUB

The Community Resilience Resource Hub is full of tools, guides, podcasts, graphic novels, templates, and case studies to support your efforts to transform brownfields and other neglected lands into community assets

Spanish language resources coming soon!


Search The Hub

Engagement & Outreach ▾

All ▾

FILTER →

Can't find what you are looking for? [Let us know!](#)




Community Development Done Right
Putting Environmental Justice and Equitable Development into Action
August 18, 2021 | 1:00pm EST

ENGAGEMENT & OUTREACH GETTING STARTED
WEBINAR

Community Development Done Right: Putting Environmental Justice and Equitable Development Into Action


In this workshop, Groundwork USA's Jalisa Gilmore and John Velazquez share guiding



ENGAGEMENT & OUTREACH GETTING STARTED
VIDEO

Best Practices for Inclusive Community Engagement

This video shares community outreach and engagement strategy tips and best



ENGAGEMENT & OUTREACH GETTING STARTED
GUIDE / TOOLKIT
PLANNING & STRATEGY DEVELOPMENT

Community Meetings for Busy People

This resource is for busy people who are looking for a high-level introduction to

Connect With Us !

- Sign Up for our **newsletters**
- Check out our **website for:**
events, TA requests, learning
cohort applications
- Reach out directly:
Jalisa@groundworkusa.org





GROUNDWORK

USA

Thank You!

About the Center for Community Progress

The only national nonprofit dedicated to disrupting vacancy at the systems-level.

Our Mission

To foster strong, equitable communities where vacant, abandoned, and deteriorated properties are transformed into assets for neighbors and neighborhoods.

How We Do It

Educating people who want to turn problem properties into assets for neighbors and neighborhoods.

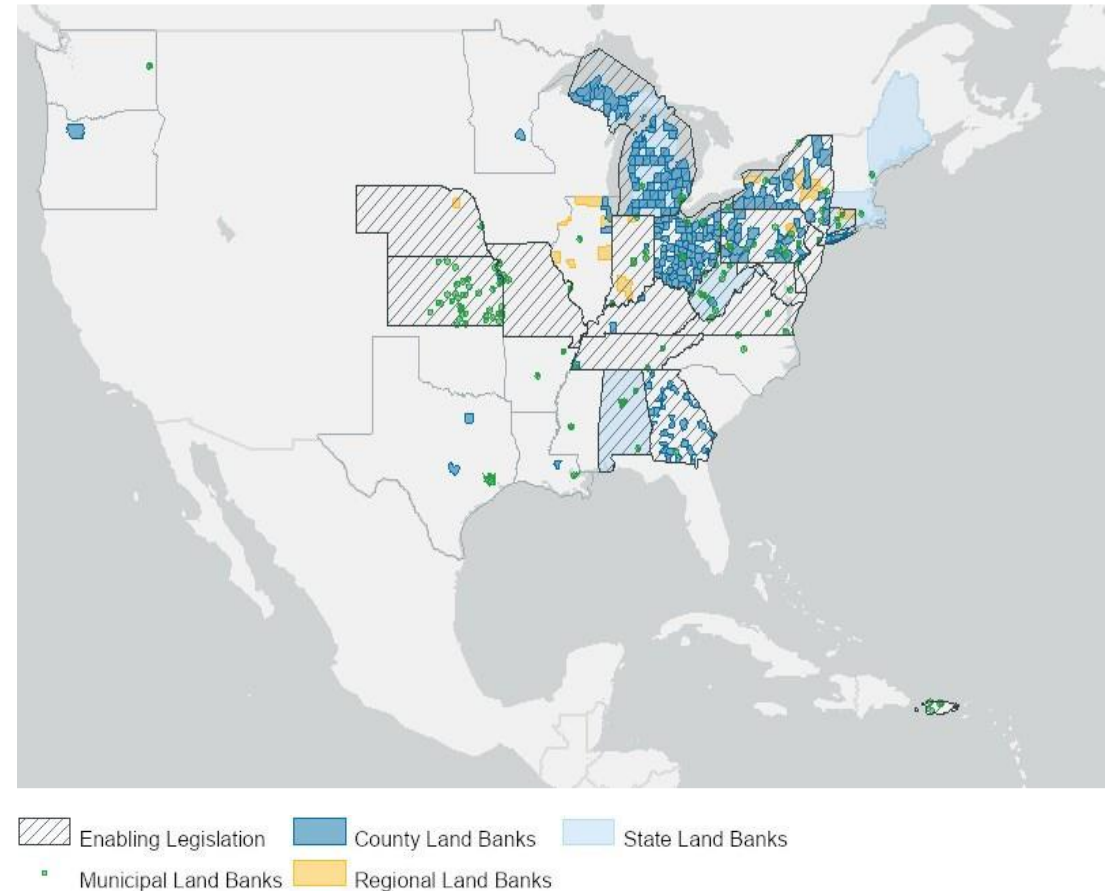
Advocating for equitable policy and practice change.

Delivering customized, expert guidance to help communities prevent and reduce entrenched vacancy.



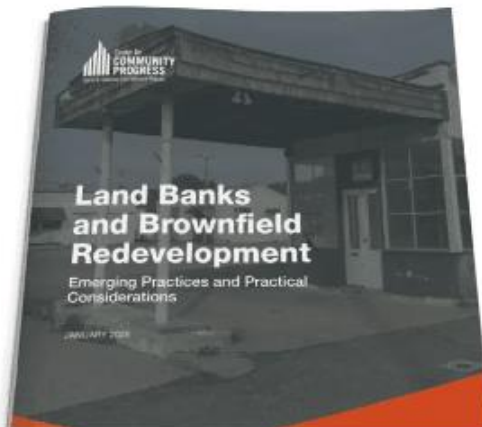
Land Banks & Brownfields

- Grant program goal: Expand community use of land banks as a tool for brownfield revitalization
- Land banks are public agencies with unique powers granted by state laws to put vacant, abandoned, and deteriorated properties back to productive use
- Powers vary from state-to-state, but the most effective land banks can:
 - Acquire tax-foreclosed properties cost effectively
 - Hold properties tax free
 - Extinguish liens and clear title
 - Flexibly dispose of properties in alignment with community goals



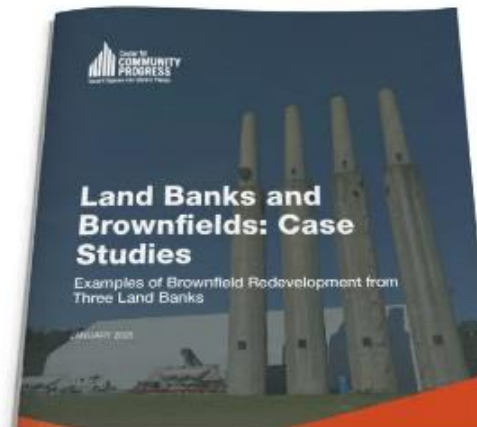
Land Bank & Brownfields Online Resource Center

A collection of publications and resources highlighting how land banks across the country are engaging in brownfields work.



Emerging Practices & Practical Considerations for Land Banks &

Practical guidance and case studies for land banks that want to redevelop contaminated... [Read More »](#)



Land Banks and Brownfields: Case Studies

Examples of how land banks have converted vacant, abandoned, and contaminated properties... [Read More »](#)



Land Banks & Brownfield Redevelopment: Step by Step

A step-by-step guide for how land banks can redevelop polluted or contaminated properties... [Read More »](#)

Coming Soon: Land Banks & Brownfields TA Scholarship!

Community Progress will be competitively awarding **free** technical assistance services to up to three (3) communities to increase the number of land banks involved with brownfield remediation.

Communities can apply for our technical support to:

1. Craft & pass state land bank-enabling legislation to help address brownfield properties;
2. Create a new land bank to help address brownfield properties in a state with enabling legislation; or
3. Help an existing land bank engage in brownfield assessment, remediation, and/or reuse.

Stay in the loop about this opportunity (coming July 28, 2025):
<https://communityprogress.org/newsletter-signup/>

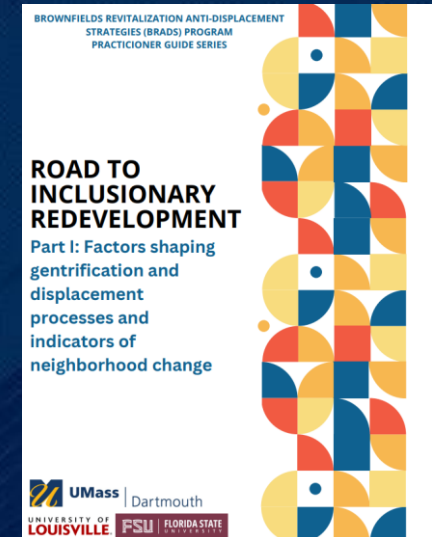
**Learn more about our work on
land banks and brownfields:**



BROWNFIELDS REVITALIZATION ANTI-DISPLACEMENT STRATEGIES (BRADS) PROGRAM

BRADS provides guidance, resources, and technical assistance to communities redeveloping brownfields to prevent displacement of existing residents and businesses.

Learn more about factors shaping gentrification



TECHNICAL ASSISTANCE

- ✓ Identifying displacement risks
- ✓ Identifying & implementing anti-displacement strategies
- ✓ Integrating anti-displacement to brownfields programs



To request technical assistance, fill out the online form on the BRADS website
<https://bradsprogram.sites.umassd.edu>

July 2025

Introducing the EPA RLF TAB



Meet Grow America

Who we are

- Established in 1969, Grow America is the nation's oldest non-profit provider of community development technical assistance and training
- We direct capital to support the development and preservation of affordable housing, the creation of jobs through training and small business lending and the advancement of livable communities
- We work in partnership with local and state governments and non-profits to build communities, economies, and capacity with hands-on technical assistance



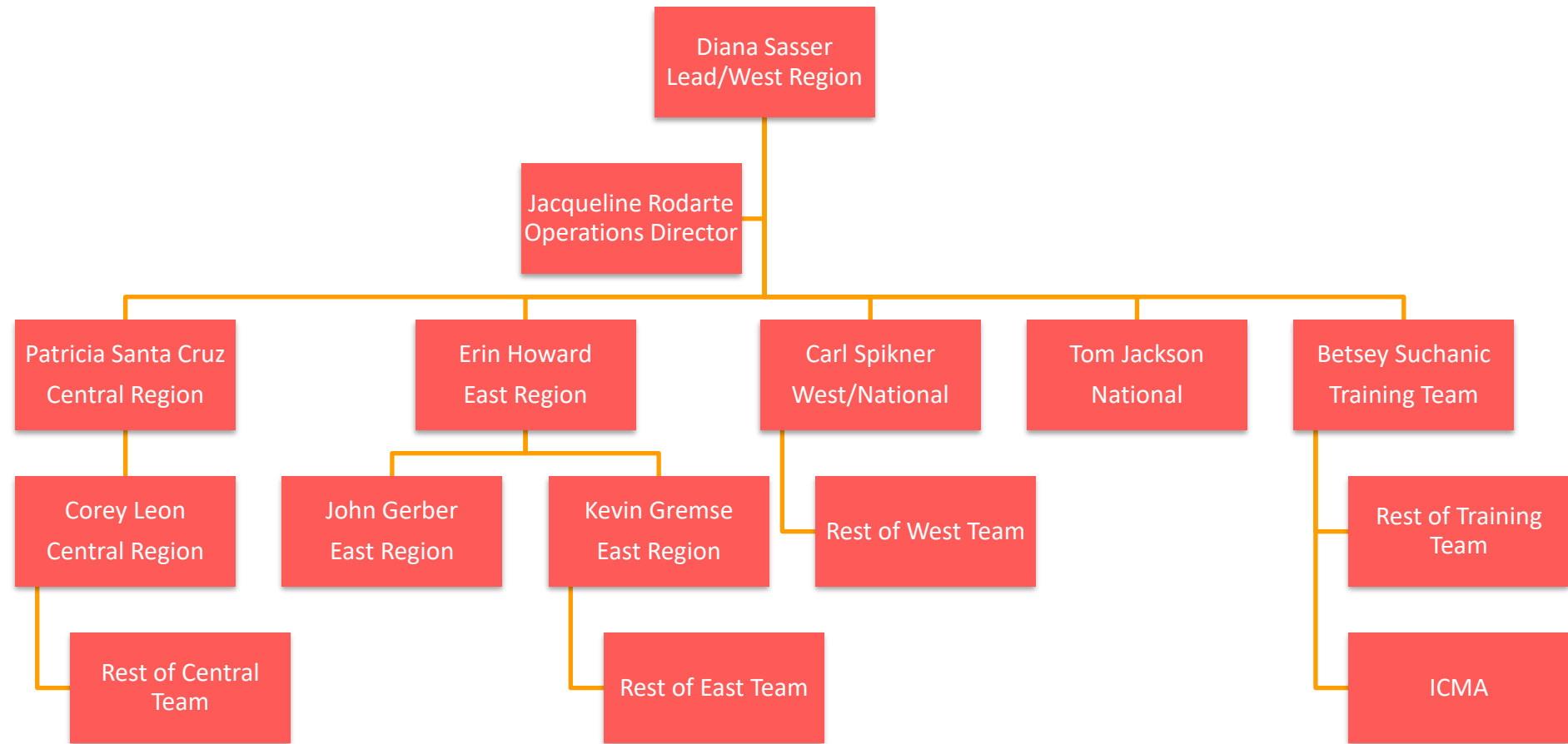
Meet our partner:

International City/County Management Association (ICMA)

- Founded in 1914, ICMA—the International City/County Management Association—is the premier professional association for local government leaders, managers, staff, and stakeholders with more than 13,000 members
- ICMA frequently partners with federal agencies, foundations, and international donors to help local governments create thriving, equitable, and resilient communities, including the following projects among others



→ EPA RLF TAB team



West Coast Team



Diana Sasser
West Region
RLF Lead
Managing Director



Erin Howard
East Region
Associate Field
Director



Patricia Santa Cruz
Central Region
Field Director

EPA Funding for Brownfields

Revolving Loan Fund Grants

- Can loan to public or private developers
- Grantee determines loan terms
- Five-year performance period
- Provides up to \$1,000,000

Fast Facts: Brownfield Revolving Loan Fund Assistance Agreements

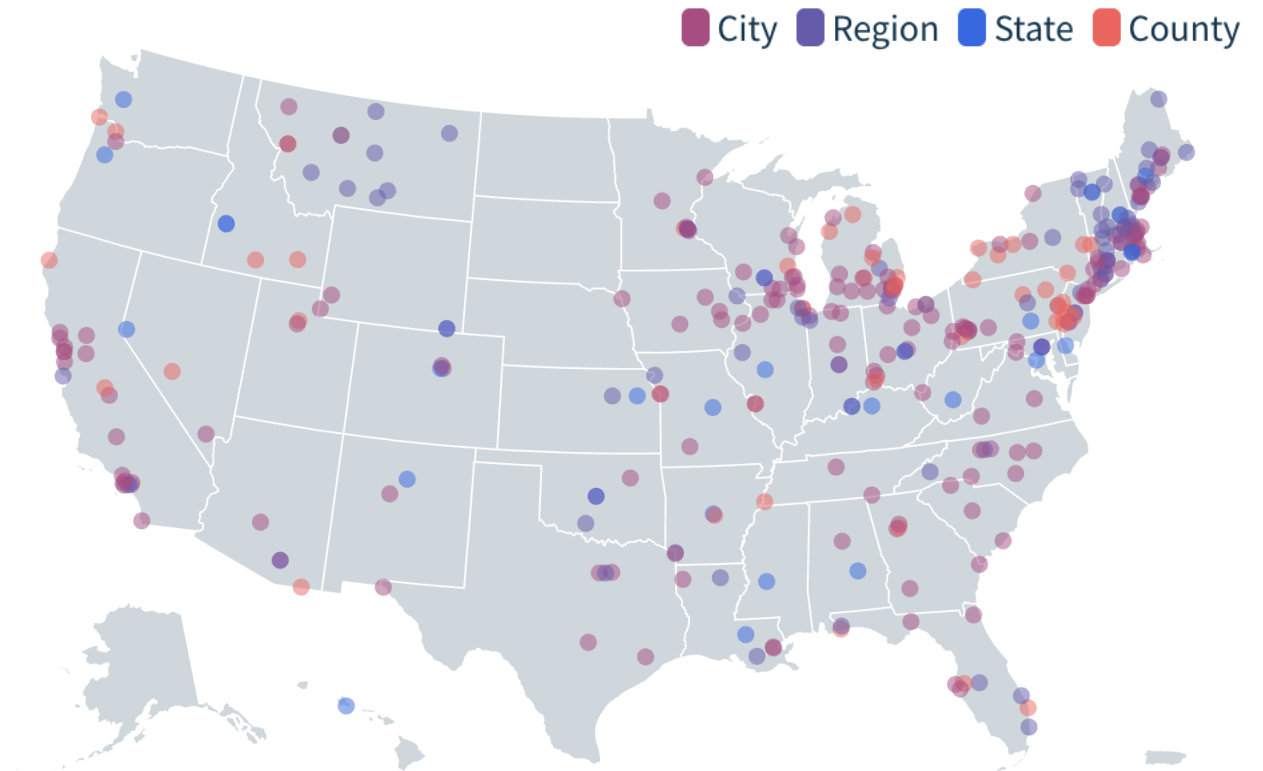
Nationally

\$866,443,439 in EPA RLF funding awarded

317 Cooperative Agreement Recipients (CARs) and **13** RLF awardees

586 Cooperative Agreements (CAs)

- **171** Open CAs
- **276** Closed CAs
- **137** Post-Closeout CAs



Project Goals

- **Build Partnerships** by establishing an **RLF Project Officer Academy** and creating an on-ramp to ready prospective applicants
- **Cultivate expertise** by offering a **cohort** training program, on demand technical assistance and other training modules and resources
- **Peer-to-Peer Exchanges** by holding **in-person National and Regional meetings to create exchange opportunities to collaborate on** needs, strategies, capacities and program impact, as well as an online portal
- **Develop Network** by establishing a **national RLF Advisory Council** and online portal with forums representing various topic areas and creating a platform for outside exchanges with developers, lenders, and EJ groups



Audience and Activities

Target Audience: EPA-funded
RLFs operating currently



**RLF Advisory
Committee**



Virtual RLF Network



**Trainings and
Resources**

Training and Resources

- A curated training program with workshops on topics that cross all organizations
- Create training cohorts of RLFs that will have specific curriculum guided by conversations with Stakeholders
- Portal will have a resource library and opportunity to contact GA Field Directors with questions



Resource Library

Search

Per page ▾

1 2

Resource type

- ☐ Case Study (2)
- ☐ Checklist or Worksheet (5)
- ☐ Fact Sheet (1)
- ☐ Guide (4)
- ☐ Handbook (2)
- ☐ Notice (1)
- ☐ Online Resource (1)
- ☐ Plan (4)
- ☐ Report (8)
- ☐ Slide Deck (17)
- ☐ Training (1)
- ☐ Video (9)
- ☐ Webinar (4)
- ☐ Workshop (12)

Reset

[Suggest a resource to include in this collection](#)



Webinar

January 2023 RLF

The purpose of the training webinar on project officers and RLF grant recipient changes in...



Video | Workshop

RLF Plans Worksho

The workshop included a great panel of topics relevant to writing or redesigning



Video | Workshop

How Cities Naviga Economic Order

During this presentation, Bruce Katz dis
affecting cities—reshoring, unpreceden
the clean energy transition—and how m



Video | Workshop

RLF 201 Worksho

Executive Director of Region XII Council
tips based on his experience about wha
redesign your RLF plan.



Video | Workshop

RLFs and Your Ca Workshop

Types of TA offered

- Review RFQ/RFPs for various items, including underwriting or environmental consultants
- Review of consultant proposals
- Review underwriting and underwriting report to give feedback
- Review of RLF Applications
- Questions on Davis/Bacon
- Samples of proformas or loan underwriting spreads
- General RLF questions
- Post-Closeout RLF Questions
- How to layer RLF into a project
- And other questions as they come up!

Stay Engaged

- **National Brownfields Conference:** Pre-Conference RLF Workshop, Conference Session, TAB Lounge, Meet the TABs Session, Exhibit Booth
- **Open Office Hours:** July 30, August 27, September 24th

We look forward to working with you!

- Grow America website:
growamerica.org
- Please sign up on our new RLF TA TAB website:
epa-rlf-tab.growamerica.org/welcome
- EPA RLF TAB email:
epa-rlf-tab@growamerica.org
- Program Manager Contact Info:
 - Diana Sasser, Managing Director
dsasser@growamerica.org
(209) 483-9863





TETRA TECH

adaapta

BROWNFIELDS JOB TRAINING

An Introduction to Technical Assistance

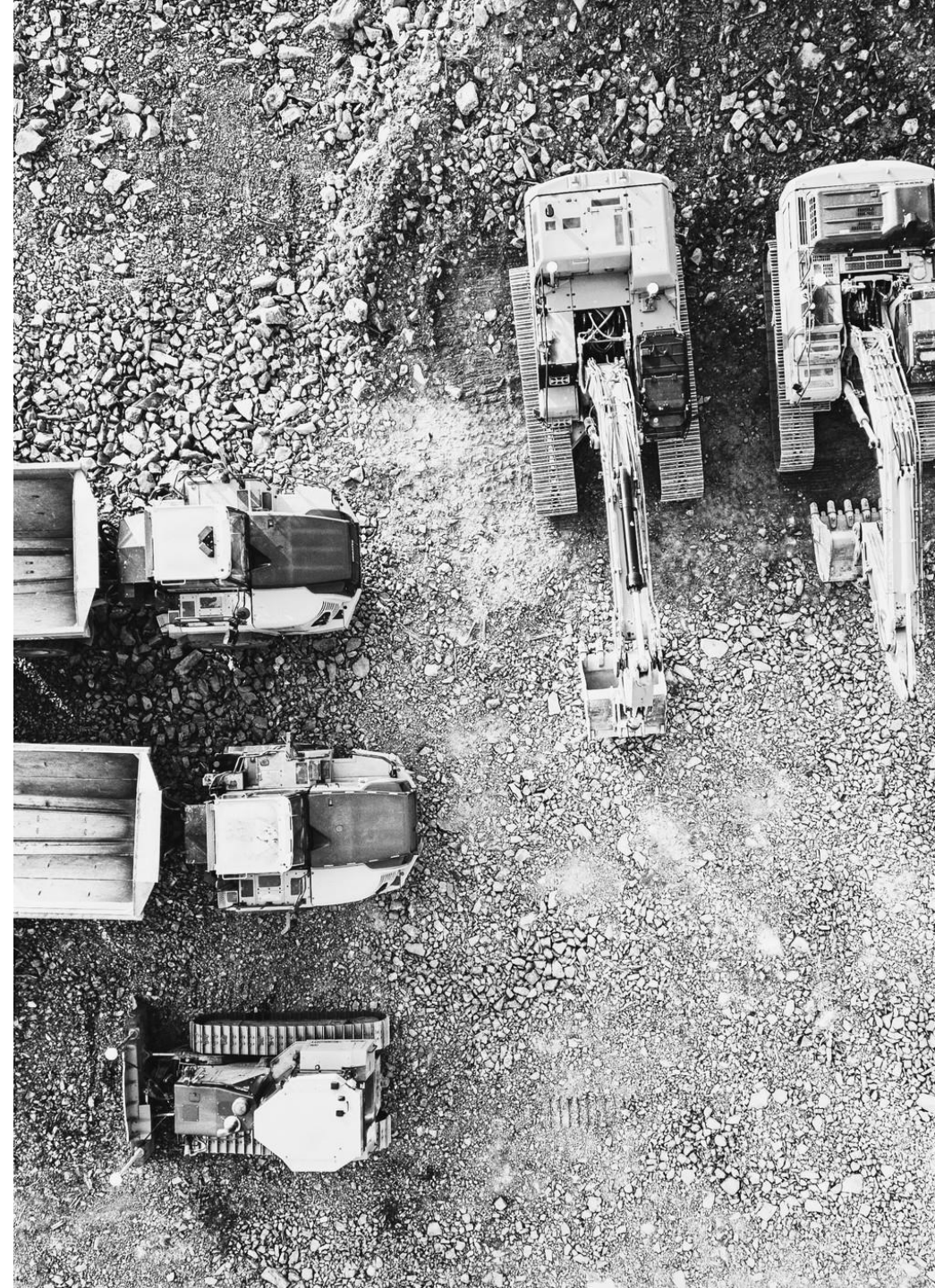


Disclaimer

The EPA's Office of Brownfields and Land Revitalization (OBLR) currently has an open Notice of Funding Opportunity (NOFO) and grant competition. Please be advised that EPA employees cannot address any questions beyond Threshold Questions, nor discussing topics related to the NOFO or the competition. For Threshold Questions, we will refer only to the information available in the [Frequently Asked Questions Document](#) or the [NOFO](#) itself.

About the Program

- The EPA Brownfields Job Training (**BFJT**) Program provides grants to recruit, train, and place unemployed and underemployed residents in environmental careers.
- **Equip individuals** with the skills to secure full-time, sustainable employment in the environmental field.
- **Helps communities** benefit directly from local brownfield cleanup and redevelopment projects.



Program Impact

- Since inception, **431 job training grants** funded totaling approx. **\$107.8 million**
 - **~21,700 graduates**
 - **16,100+ obtained employment** in the environmental field.
 - Cumulative program **placement rate of 74%**
 - Graduates' starting wages are approximately **\$16.5 per hour**
- Since 2020: Average starting wage was **~\$22 per hour**



Technical Assistance Providers



TETRA TECH

www.tetratech.com



Steve Michener
Project Manager



Sherry Weedman
Sr. Enviro. Health Scientist/ Program Manager



Eric Eisiminger
Project Manager



www.adaapta.com



Danielle Getsinger
CEO



Krisandra Provencher
Sustainability Manager



Mike Senew
Senior Advisor

Technical Assistance

- Professional Learning Community (PLC) Calls
- Resource Development & Webinars
- 2025 Best Practices Guide
- Virtual 1-on-1 Support



brownfieldsjobtraining@adaapta.com



www.epa.gov/brownfields/forms/brownfields-job-training-program-technical-assistance-inquiry-form



Professional Learning Community (PLC)

- **Connect** with BFJT grantees, prospective applicants, technical assistance providers, and EPA staff
- **Share** best practices and real-world strategies for program implementation
- **Troubleshoot** challenges
- **Listen** to grantee success stories and foster peer-to-peer learning
- **Learn** about EPA resources and upcoming opportunities



To be included on the invites for future PLC calls, submit an [inquiry form](#) and state in the "Inquiry" field a request to "Add me to future PLC call invites."

Additional Resources

- Latest BFJT News & Resources:
<https://www.epa.gov/brownfields/brownfields-job-training-grants>
- Updated Best Practices Guide:
<https://www.epa.gov/brownfields/brownfields-job-training-best-practices-guide>
- FY 2026 Brownfields Job Training Grants page: <https://www.epa.gov/brownfields/fy-2026-brownfields-job-training-grants>

