

PALA RESERVATION EMERGENCY PREPAREDNESS PROJECT (PREP)

Summer RTOC Meeting

July 31, 2024





PALA BAND OF
MISSION INDIANS

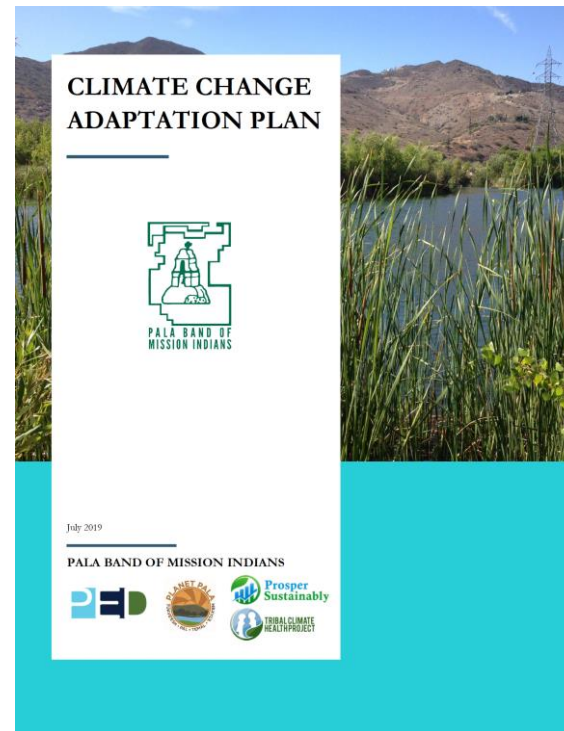
PALA BAND OF MISSION INDIANS

Erosion Flood Drought
Lifeline Incident High Wind
Wildfire Dam Failure
Landslide
Extreme Heat
Air Pollution

- Tribal community in San Diego County, California

Pala Environmental Department (PED)

- Planning Documents
- Outreach & Engagement Activities
- Emergency Alerts
- History of Success Securing Grant Funding



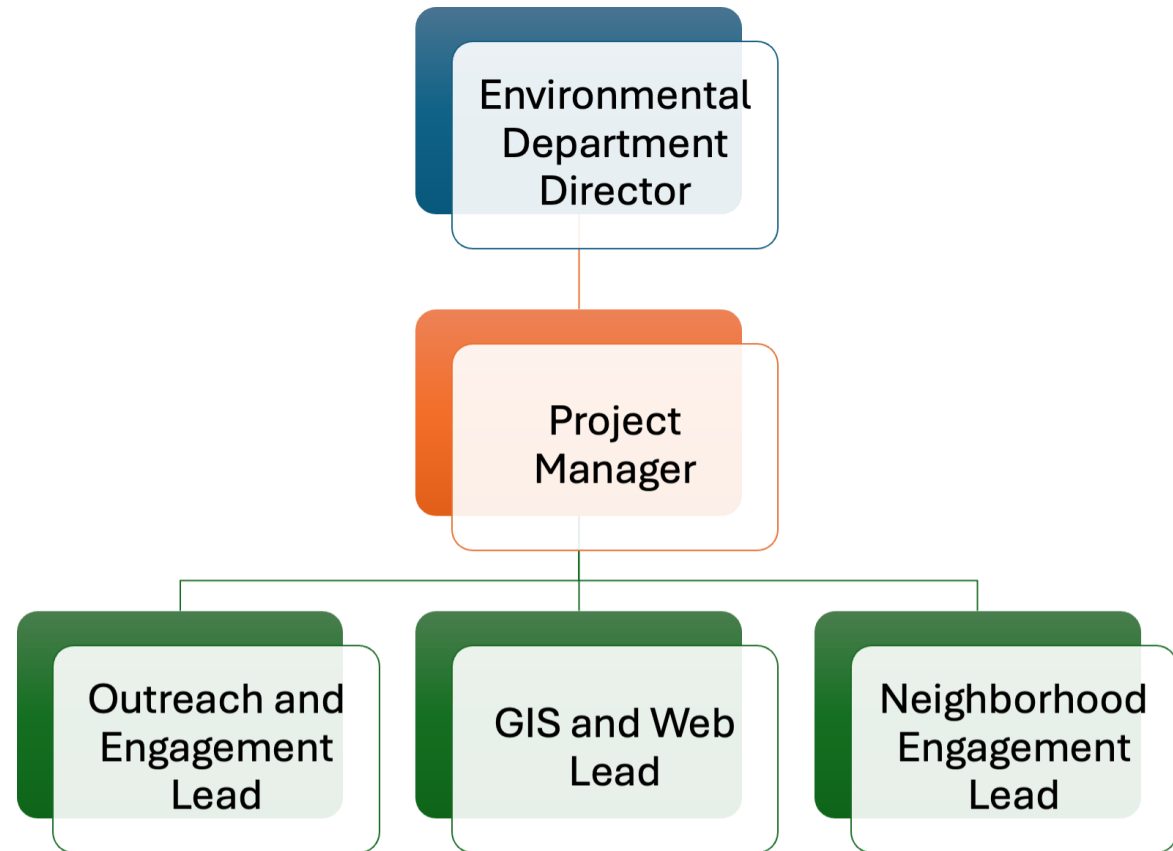
Strengthening Tribal Resilience and Sustainability

- **Objective:** Enhance tribal capacity to prepare for and mitigate natural hazards and climate change.
- **Key Actions:**
 - Educate and inform Tribal community
 - Engage community through hands-on activities
 - Implement the Hazard Mitigation Plan
 - Adapt to climate change
- **Outcome:** Increased community resilience and sustainability through proactive disaster preparedness and practical solutions.



PREP Funding and Management

- BIA funding for 2 Years
- Pala staff supported by a consultant
- Opportunity to increase part-time staff to full-time



PREP Tasks



**Mitigation and
Information
Campaign
Webpages**



**Community
Outreach and
Engagement**



**Modeling for Other
Tribes**



**Long-Term
Implementation
and Development**

Task 1. Mitigation and Information Campaign Website

1. Explore Your Neighborhood - Reservation Profile
2. Hazards and Risk - Hazard Information and Risk Analysis
3. Planning and Preparing -Personal Preparedness

HAZARD MITIGATION PLAN UPDATE

Pala Band of Mission Indians

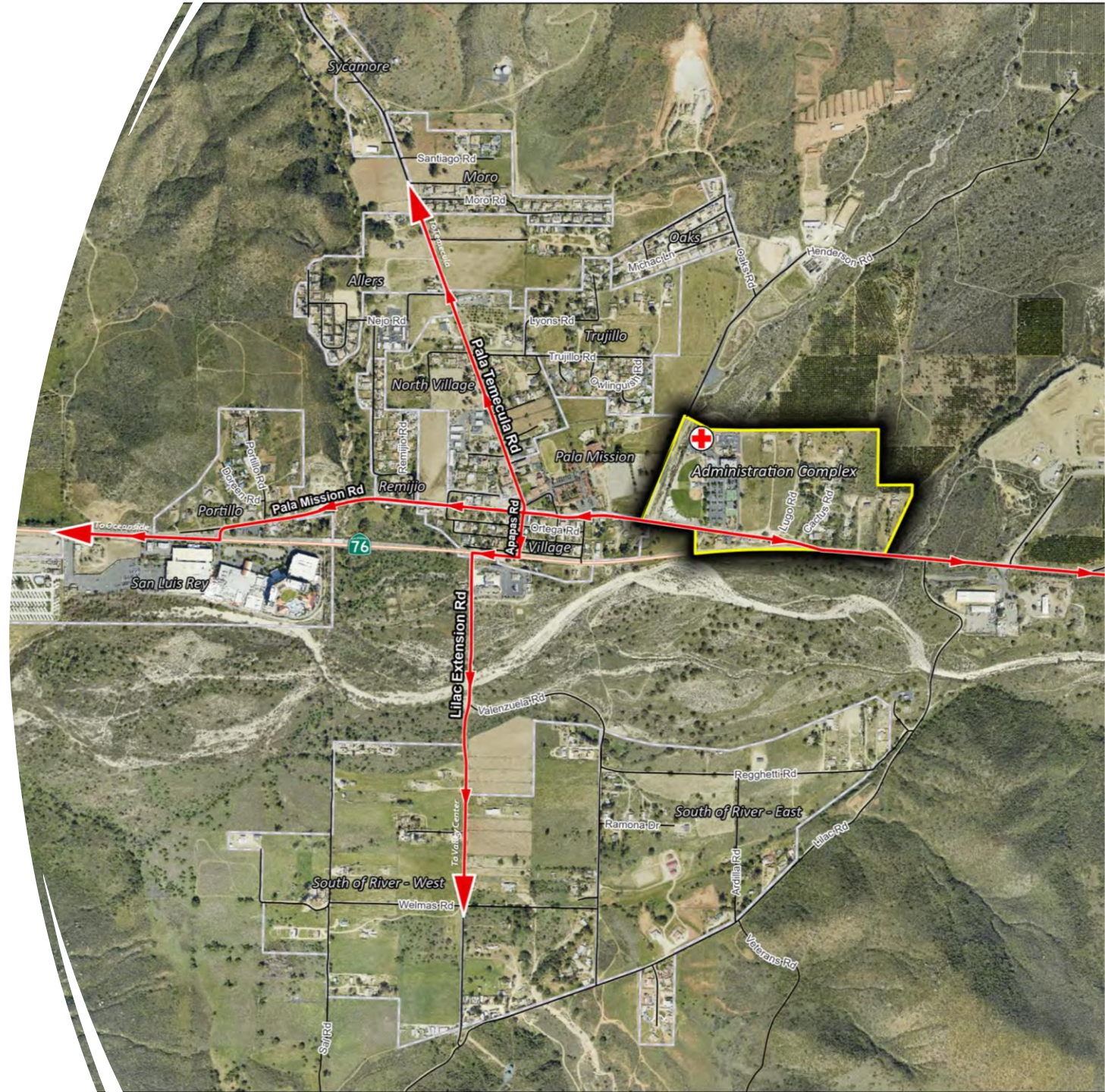
OCTOBER 2020



Pala Environmental Department
12196 Pala Mission Road
Pala, CA 92059

Explore Your Neighborhood

- Interactive Mapping
- Evacuation Routes
- Links to Hazard Specific Information



Hazards and Risk



Detailed Hazard Profiles

Pala Specific Definitions

Historic Occurrences

Location

Severity

Probability

Vulnerability

Climate Change Impacts

Planning and Preparing

Personal, Pet and
Neighborhood
Preparedness

Tribal Mitigation
Strategy

System for Planning and Preparing

Learn and Plan

Check and Build

Practice and Help

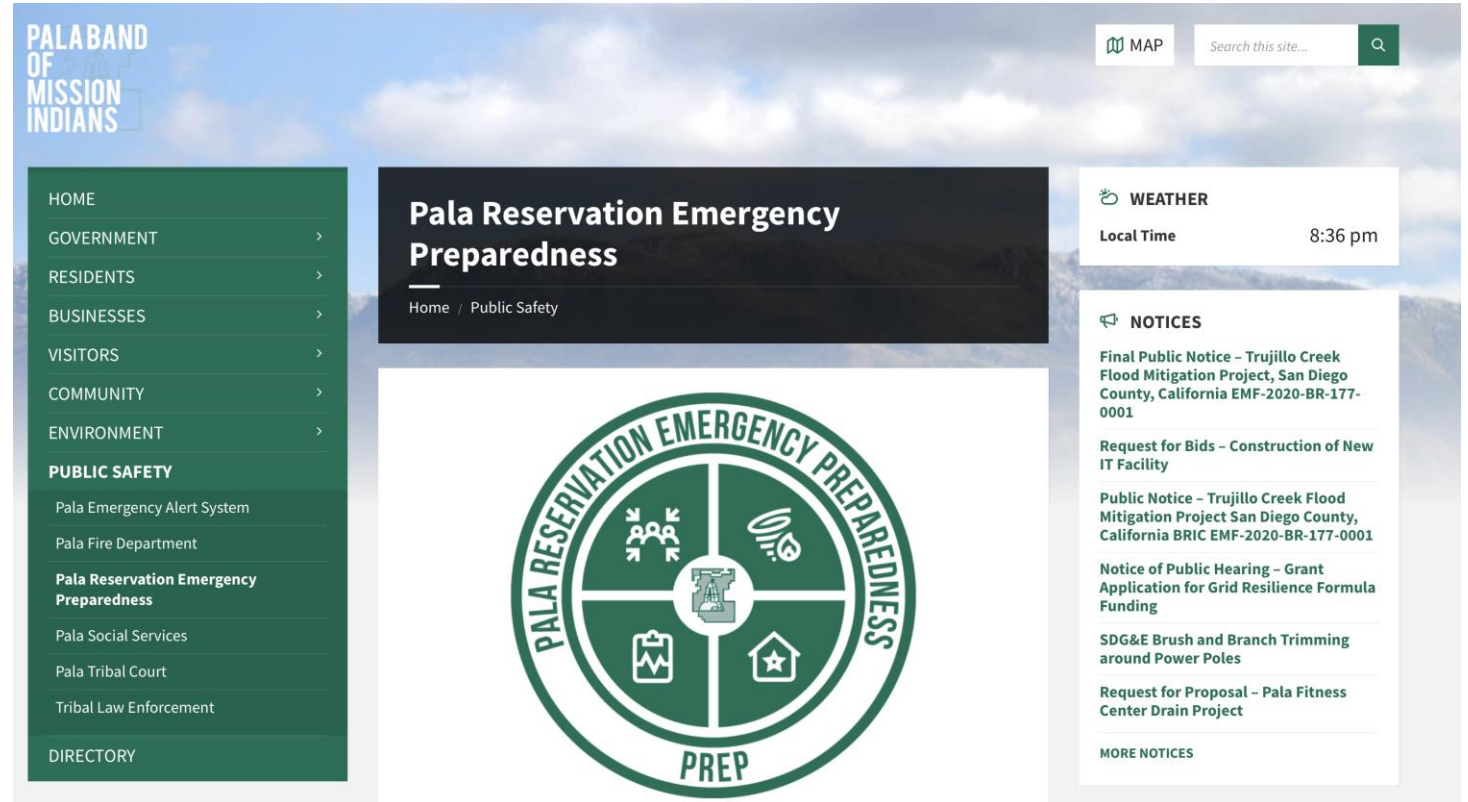
Customize for Specific Hazards

Task 2. Community Outreach and Engagement

**Series of 3
Community
Trainings**

**Develop
Educational
Materials**

Materials Developed and Outreach Conducted



- PREP Household Disaster Plan
- Emergency Contact Card
- Emergency Wallet Card
- Informational Flyer
- Newsletter Articles
 - Quarterly PED Newsletter
 - Tribal Quarterly
 - Human Resources Monthly

Lessons Learned



Participation is Hard To Get

Surveys – no one likes them



Neighborhood Visits

Get invited
Build on community that
exists –meet residents in
comfortable environments



Department Participation Needs Leadership Support



Have Patience

Task 3. Modeling for Other Tribes



**DEVELOP A HOW-TO-
GUIDE FOR PREP**



**DELIVER CONFERENCE
PRESENTATIONS**



**CONDUCT FIRE
DEPARTMENT
TRAININGS AND
REGIONAL WORKSHOPS**

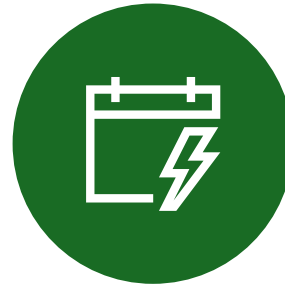


**RECRUIT AND TRAIN
CERT TEAM MEMBERS**

Task 4. Long-term Implementation and Development



Capture Lessons Learned



Develop Scope and
Schedule for Next 2 Years



Apply for Additional
Grant Support



Project Closeout

For More Information

Shasta Gaughen, Director

- Pala Environmental Department
- 760-891-3515
- sgaughen@palatribe.com

Jamie Caplan, Principal

- Jamie Caplan Consulting LLC
- 413-586-0867
- jamie@jamiecaplan.com



JAMIE CAPLAN CONSULTING LLC
Emergency Management Services