



# **Wayne Disposal, Inc. Draft TSCA PCB Landfill Approval**

Public Meeting and Hearing  
Belleville, MI  
September 2025



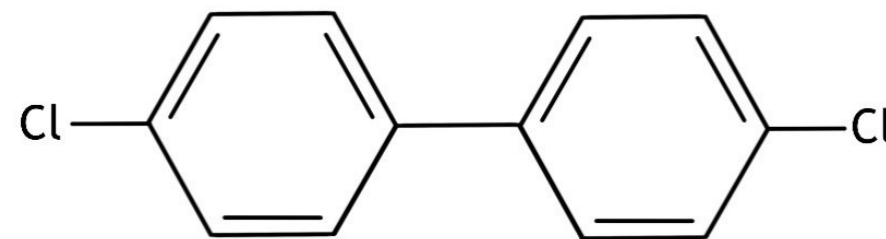


# Introduction

- Emily Keener, Environmental Protection Agency (EPA) Region 5, Permit Writer
- PCB approval renewal application
- Draft approval (aka permit) & public comment

# What are PCBs?

- PCBs (Polychlorinated Biphenyls) are man-made chemicals manufactured in the U.S. from the 1920s-1970s.
- PCB manufacturing banned in 1979 due to PCBs' impacts on health and the environment.
- Federal regulations establish specific requirements for management and disposal of PCBs.



# Why two permits?

## PCB Approval

Issued by **EPA**

Addresses **PCBs**

Applies requirements to WDI under the Toxic Substances Control Act (TSCA)

TSCA permits (“approvals”) are issued by the federal EPA

## Hazardous Waste License

Issued by **MI EGLE**

Addresses **hazardous waste**

Applies requirements to WDI under the Resource Conservation and Recovery Act (RCRA)

Michigan EGLE is authorized to issue RCRA permits (“licenses”)

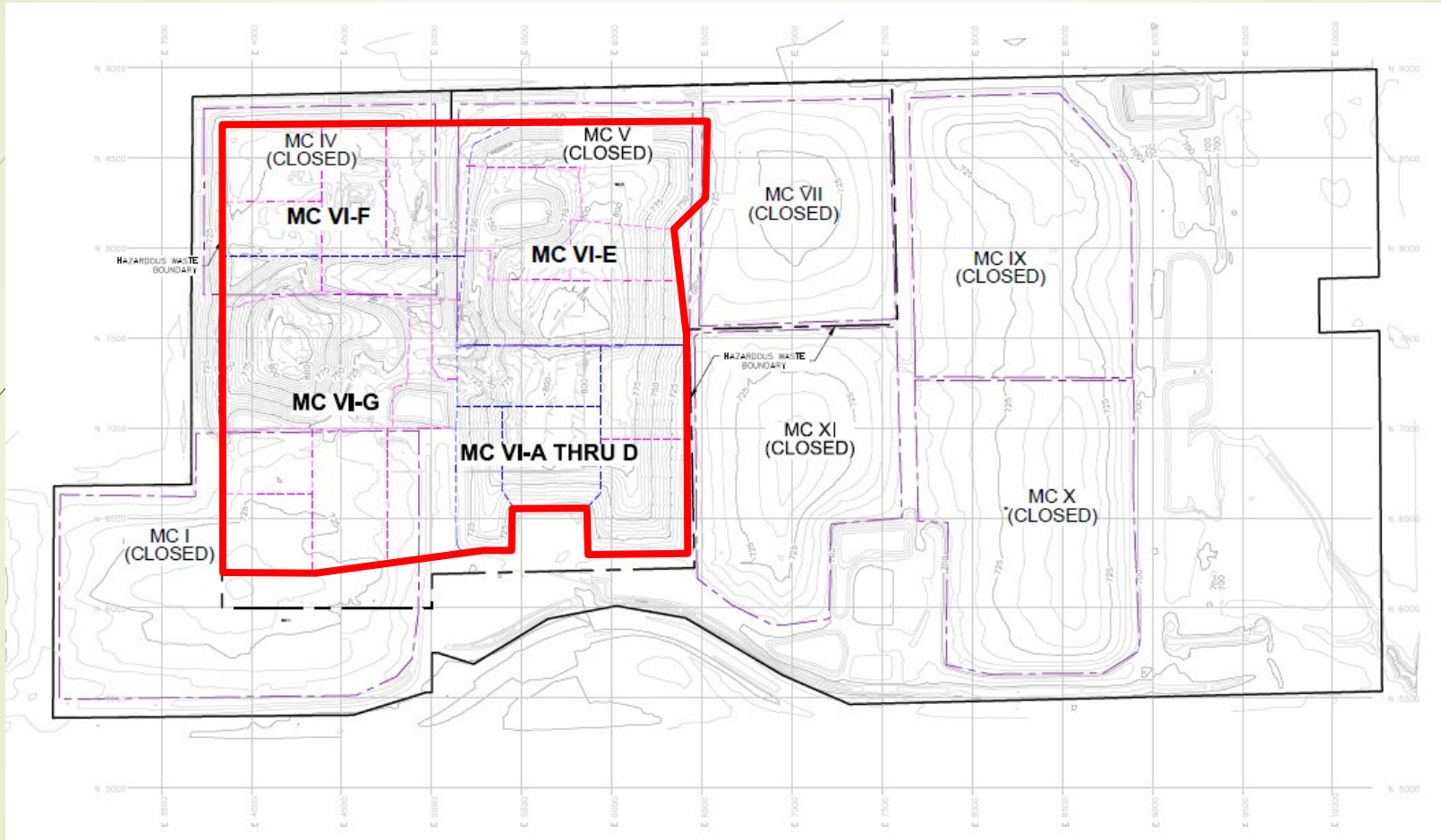


# Wayne Disposal Landfill PCB Disposal

- WDI has been disposing of PCBs under TSCA approvals since 1997.
- WDI's PCB Approval was most recently renewed in 2019 and modified in 2022.
- WDI submitted a renewal application in November 2021.



# Permitted PCB Landfill Cells



- Source: CTI and Associates, Inc. (2021). Wayne Disposal, Inc. Site No. 2 - Master Cell VI-F&G, Van Buren Township, Wayne County, Michigan. (Project No. 1218070017). [General Site Plan]. Retrieved from Wayne Disposal Inc. (MID 048 090 633) Part 111 Hazardous Waste Permit Renewal Application and Major Modification Request TSCA PCB Chemical Landfill PCB Coordinated Approval.



# Proposed Design Modifications

- Change cell layout and liner grades
- Change to final cover grade
- Alternative final cover
- Relocation of existing leachate detection and leachate sumps

# Required Monitoring and Controls

## Controls:

- Double landfill liner
- Leachate collection system
- Leachate detection system
- Storm water management system

Monitoring	Frequency
Groundwater monitoring	Quarterly
Surface water monitoring	Quarterly
Perimeter air monitoring	Twice per month
Leachate level monitoring and sump inspection	Weekly
Leachate production volumes	Monthly
Leachate sampling and analysis	Annually
PCB soil sampling	Twice per year





# Technical Permit Requirements

- Environmental Monitoring and Controls
- Quarterly and Annual Reports
- Notification Requirements
- Employee Training Program
- Inspections of Facility
- Facility Security/Controlled Access
- Truck Wheel Wash Stations
- Approval Renewal Process

# Public Comment Information

- Submit public comments to EPA through October 31, 2025 via:
  - Website: <https://www.epa.gov/pcbs/wayne-disposal-inc-republic-services>
  - Email:
    - EPA PCB Permit Writer, Emily Keener, [Keener.Emily@epa.com](mailto:Keener.Emily@epa.com);
  - Mail:
    - Emily Keener, U.S. EPA Region 5, 77 W. Jackson Blvd., LR-17J, Chicago, IL 60604



# Contact Information

- EPA PCB Permit Writer
  - Emily Keener, [Keener.Emily@epa.gov](mailto:Keener.Emily@epa.gov); 312-886-6581
- EPA Community Involvement Coordinator
  - Francisco Arcaute, [Arcaute.Francisco@epa.gov](mailto:Arcaute.Francisco@epa.gov); 312-886-7613
- For more information on PCBs see:
  - [www.epa.gov/pcbs](http://www.epa.gov/pcbs)
  - <https://www.michigan.gov/egle/regulatory-assistance/compliance-assistance/environmental-regulations-guide>