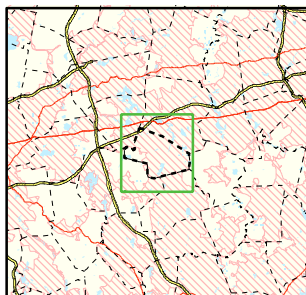


Area of Focus:



NPDES Phase II Stormwater Program Automatically Designated MS4 Areas *Ashland, Massachusetts*

- Ashland Town Boundary
- Regulated Area (2000 Urbanized Area)

Town Population: 14,674
Regulated Population: 14,200



0 0.4 0.8 1.2 Miles

Data Sources: Urbanized Areas from US Census Bureau (2000). Political boundaries from MassGIS. Hydrography from NHD. Transportation data from GDT at 1:24,000. Map Updated: 10/2/02; US EPA- New England GIS Center L:/projects/stormwater/phase2/matowns/new/