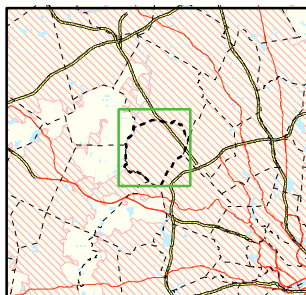


Area of Focus:



NPDES Phase II Stormwater Program Automatically Designated MS4 Areas *Bedford, Massachusetts*



Bedford Town Boundary



Regulated Area (2000 Urbanized Area)

Town Population: 12,595
Regulated Population: 12,595



0 0.3 0.6 0.9 Miles

Data Sources: Urbanized Areas from US Census Bureau (2000). Political boundaries from Mass GIS. Hydrography from NHD. Transportation data from GDT at 1:24,000. Map Updated: 10/4/02; US EPA- New England GIS Center L:/projects/stormwater/phase2/nhtowns/new/