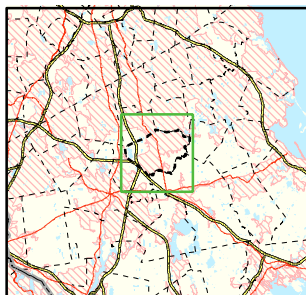


Area of Focus:



NPDES Phase II Stormwater Program Automatically Designated MS4 Areas *Bridgewater, Massachusetts*

- Bridgewater Town Boundary
- Regulated Area (2000 Urbanized Area)

Town Population: 25,185
Regulated Population: 23,637



0 0.6 1.2 1.8 Miles

Data Sources: Urbanized Areas from US Census Bureau (2000). Political boundaries from MassGIS. Hydrography from NHD. Transportation data from GDT at 1:24,000. Map Created: 9/30/02; US EPA- New England GIS Center L:/projects/stormwater/phase2/matowns/new/