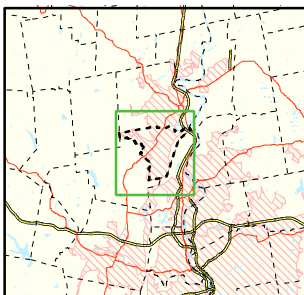


Area of Focus:



NPDES Phase II Stormwater Program Automatically Designated MS4 Areas *Easthampton, Massachusetts*



Easthampton Town Boundary



Regulated Area (2000 Urbanized Area)

Town Population: 15,994
Regulated Population: 15,375



0 0.5 1 1.5 Miles

Data Sources: Urbanized Areas from US Census Bureau (2000). Political boundaries from MassGIS. Hydrography from NHD. Transportation data from GDT at 1:24,000. Map Created: 10/4/02; US EPA- New England GIS Center
L:/projects/stormwater/phase2/matowns/new/