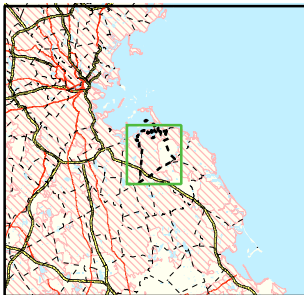


Area of Focus:



# NPDES Phase II Stormwater Program Automatically Designated MS4 Areas *Hingham, Massachusetts*



Hingham Town Boundary



Regulated Area (2000 Urbanized Area)

Town Population: 19,882  
Regulated Population: 18,977



0 0.5 1 1.5 Miles

Data Sources: Urbanized Areas from US Census Bureau (2000). Political boundaries from MassGIS. Hydrography from NHD. Transportation data from GDT at 1:24,000. Map Created: 10/4/02; US EPA- New England GIS Center  
L:/projects/stormwater/phase2/matowns/new/