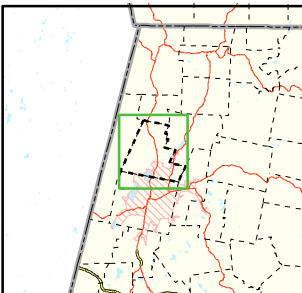


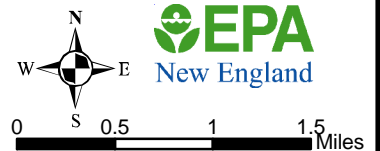
Area of Focus:



NPDES Phase II Stormwater Program Automatically Designated MS4 Areas *Lanesborough, Massachusetts*

- Lanesborough Town Boundary
- Regulated Area (2000 Urbanized Area)

Town Population: 2,990
Regulated Population: 1,672



Data Sources: Urbanized Areas from US Census Bureau (2000). Political boundaries from MassGIS. Hydrography from NHD. Transportation data from GDT at 1:24,000. Map Created: 11/12/02; US EPA- New England GIS Center L:/projects/stormwater/phase2/matowns/new/