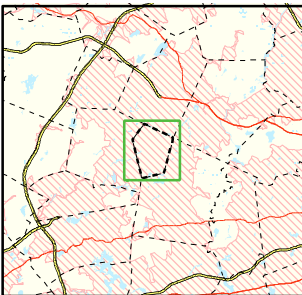


Area of Focus:



**NPDES Phase II Stormwater Program
Automatically Designated MS4 Areas
*Maynard, Massachusetts***



Maynard Town Boundary



Regulated Area (2000 Urbanized Area)

Town Population: 10,433
Regulated Population: 10,433



0 0.2 0.4 0.6 Miles

Data Sources: Urbanized Areas from US Census Bureau (2000). Political boundaries from MassGIS. Hydrography from NHD. Transportation data from GDT at 1:24,000. Map Created: 11/14/02; US EPA- New England GIS Center
[L:/projects/stormwater/phase2/matowns/new/](http://projects/stormwater/phase2/matowns/new/)